

- 
- Goleta Kelp Study  
Project-Sea Cave

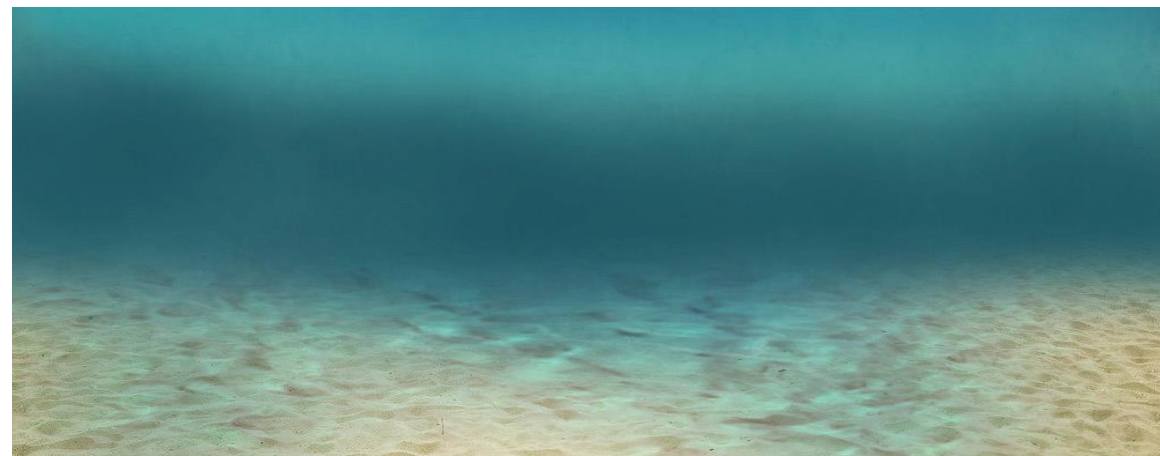


Helping Ocean Life Thrive®

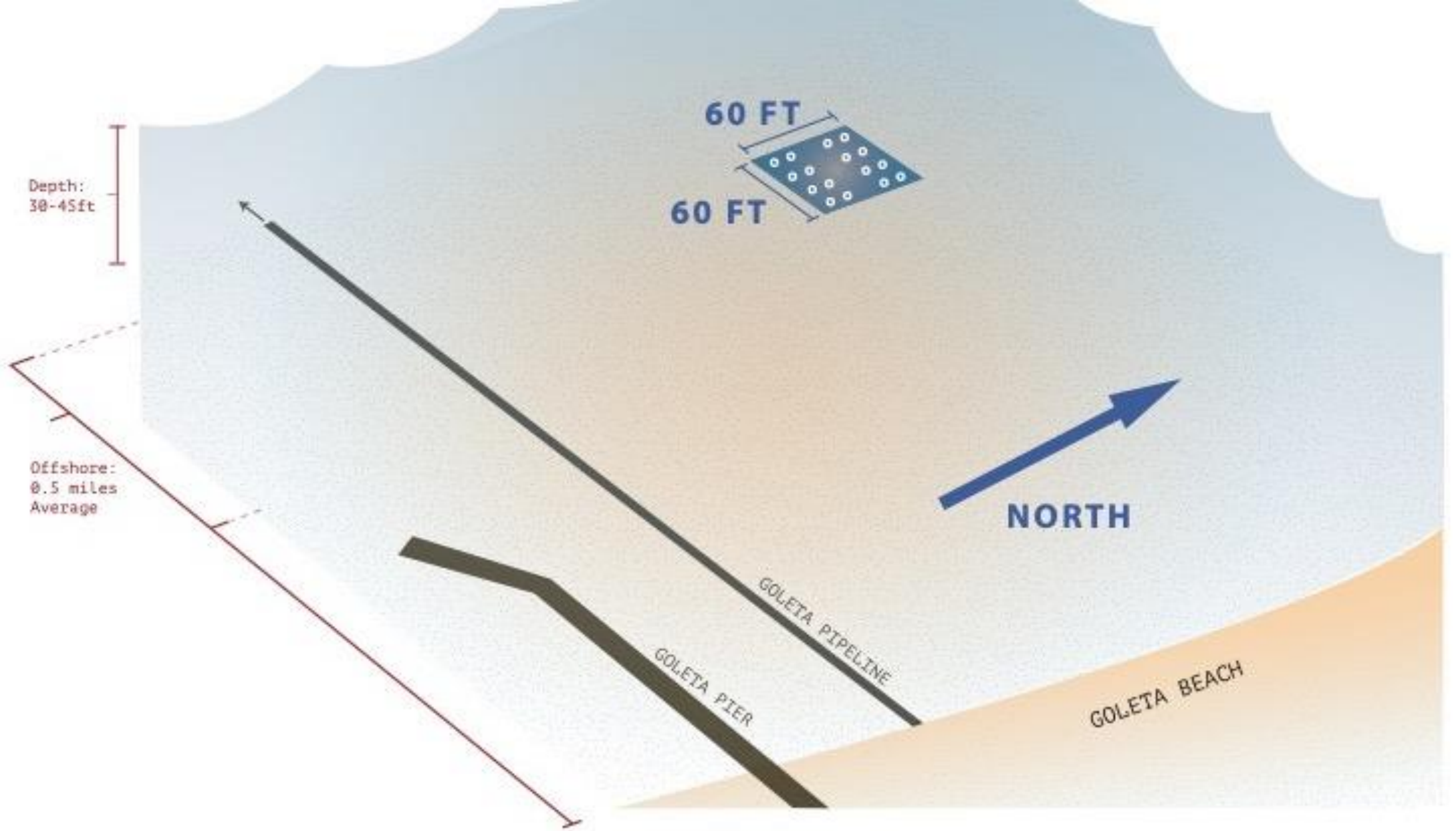
# GOLETA KELP REEF



220 Acre Kelp Forest, Extended Coastline & Thriving Sealife



Depleted Kelp Forest, Eroded Coastline & Scarce Sealife



Proposed Reef Location

- State Lands Lease 9724 Approved

RECORDED AT THE REQUEST OF  
AND WHEN RECORDED MAIL TO:  
STATE OF CALIFORNIA  
California State Lands Commission  
Attn: Land Management Division  
100 Howe Avenue, Suite 100-South  
Sacramento, CA 95825-8202

**STATE OF CALIFORNIA  
OFFICIAL BUSINESS**

Document entitled to free recordation  
pursuant to Government Code Section  
27383

SPACE ABOVE THIS LINE FOR RECORDER'S USE

County: Santa Barbara

A3879

**LEASE** \_\_\_\_\_ **9724** \_\_\_\_\_

This Lease consists of this summary and the following attached and incorporated parts:

Section 1	Basic Provisions
Section 2	Special Provisions Amending or Supplementing Section 1 or 3
Section 3	General Provisions
Exhibit A	Land Description
Exhibit B	Site and Location Map

**SECTION 1: BASIC PROVISIONS**

**THE STATE OF CALIFORNIA**, hereinafter referred to as Lessor acting by and through the **CALIFORNIA STATE LANDS COMMISSION** (100 Howe Avenue, Suite 100-South, Sacramento, California 95825-8202), pursuant to Division 6 of the Public Resources Code and Title 2, Division 3 of the California Code of Regulations, and for consideration specified in this Lease, does hereby lease, demise, and let to **Fish Reef Project, 501(c)3**, hereinafter referred to as Lessee, those certain lands described in Exhibit A hereinafter referred to as Lease Premises, subject to the reservations, terms, covenants, and conditions of this Lease.

# Production Yard



***Unique Mold System*** allows for mass production



Loading of the stackable *Sea Caves*® onto semi truck trailers.

Deploying 16 in Goleta Bay as study for kelp restoration





# Deployment

---





Multiple **Sea Caves**® unloaded onto the seabed of South Carolina U.S.A

Baja Reef after  
10 months

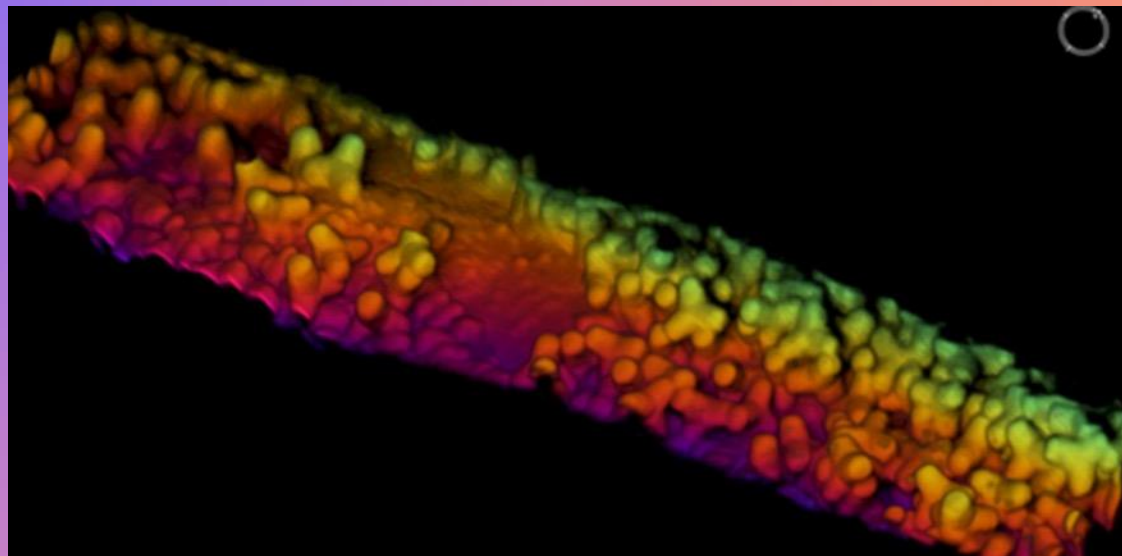
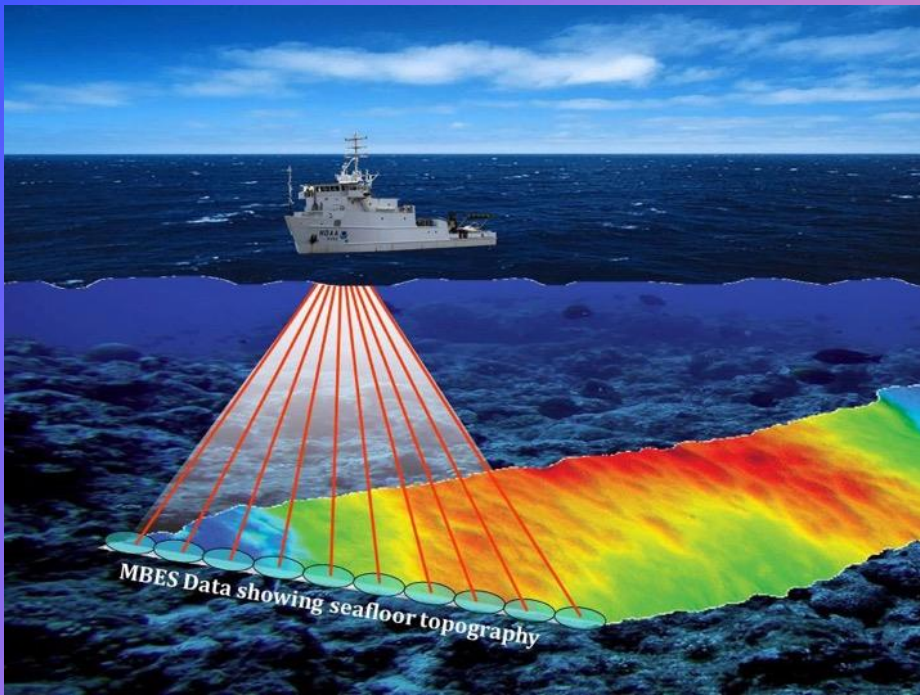






- Sustains 500 Kgs marine life
- Sequesters 3-6t/T per year Blue Carbon
- Rebuilds entire Kelp ecosystems





## 7 years of monitoring

- PROVIDE A CLEAR VIEW OF THE REEFS AS PROOF OF DELIVERABLE

- PROVIDE BASELINE DATA

- PROVIDE IMAGING TO SEE IF REEFS SHIFT OR SCOUR

- FULL BIOLOGICAL STUDIES





**Fish**<sup>®</sup>  
**Reef**  
**Project**

**Helping Ocean Life Thrive**<sup>®</sup>