



PUBLIC WORKS DEPARTMENT

TRANSPORTATION DIVISION



**25 MPH
PLAYGROUND
SPEED LIMIT**

BOARD OF SUPERVISORS HEARING

SEPTEMBER 11, 2012



25 MPH PLAYGROUND SPEED LIMIT



California Vehicle Code (CVC) 22357.1

Allows local agencies to establish a 25 M.P.H. speed limit adjacent to playgrounds:

...a local authority may, by ordinance or resolution, set a prima facie speed limit of 25 miles per hour on any street, other than a state highway, adjacent to any children's playground ...



PROPOSED COUNTY CODE AMENDMENT

CHAPTER 23 - MOTOR VEHICLES AND TRAFFIC; Section 23-15 – Speed Limits

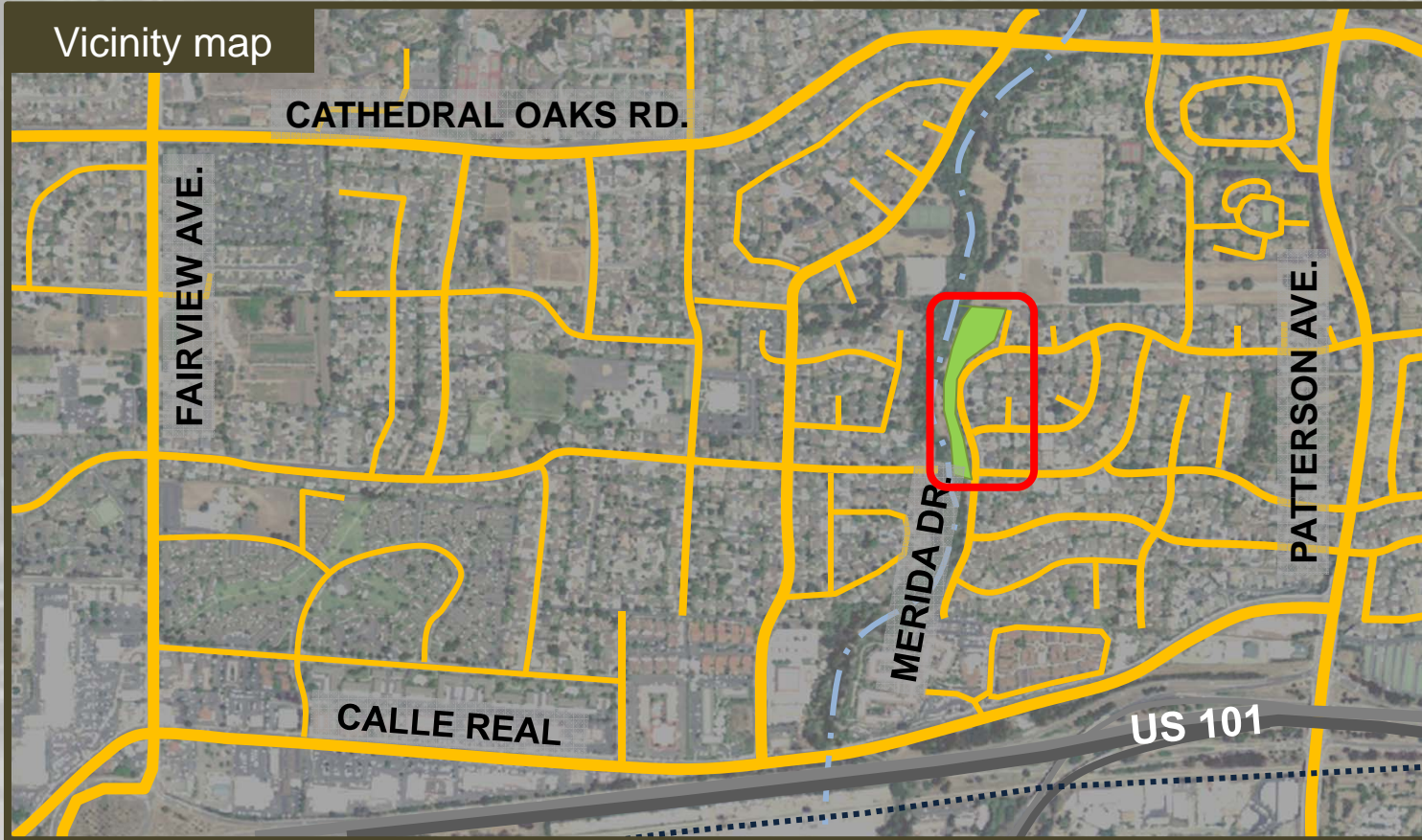
Twenty-five miles per hour speed limit adjacent to children's playgrounds. The speed limit for the highways or portions thereof designated in this section is hereby determined and declared to be twenty-five miles per hour adjacent to any children's playground in a public park but only during particular hours or days when children are expected to use the facility.



25 MPH SPEED LIMIT MERIDA DRIVE



Vicinity map



- Merida Drive does not meet requirements for State “Residential District” designation
- Establishing a speed limit requires an Engineering Traffic Survey every 7-10 years



25 MPH SPEED LIMIT MERIDA DRIVE



- A. Consider the introduction of an Ordinance amending Santa Barbara County Code, Chapter 23, Sections 23-15.3, 23-15.4, 23-15.5 , 23-15.6, 23-15.7, and 23-15.8, pertaining to the speed limit adjacent to a children's playground on Merida Drive in the Goleta area (15 minutes);
- B. Set hearing on the Administrative Agenda of September 18, 2012 to consider recommendations, as follows:
 - i. Consider the adoption (second reading) of an Ordinance, amending Santa Barbara County Code, Chapter 23 Sections 23-15.3, 23-15.4, 23-15.5, 23-15.6, 23-15.7, and 23-15.8, pertaining to speed limits adjacent to a children's playground on Merida Drive, Second Supervisorial District;
 - ii. Find that the proposed action is for the operation and maintenance of existing public facilities, involving negligible, or no expansion of use beyond that which presently exists, that the proposed action is therefore exempt from the California Environmental Quality Act (CEQA) pursuant to 14 CCR 15301; and
 - iii. Approve the filing of a Notice of Exemption on that basis.



25 MPH SPEED LIMIT MERIDA DRIVE



QUESTIONS?



25 MPH PLAYGROUND SPEED LIMIT



THANK YOU !