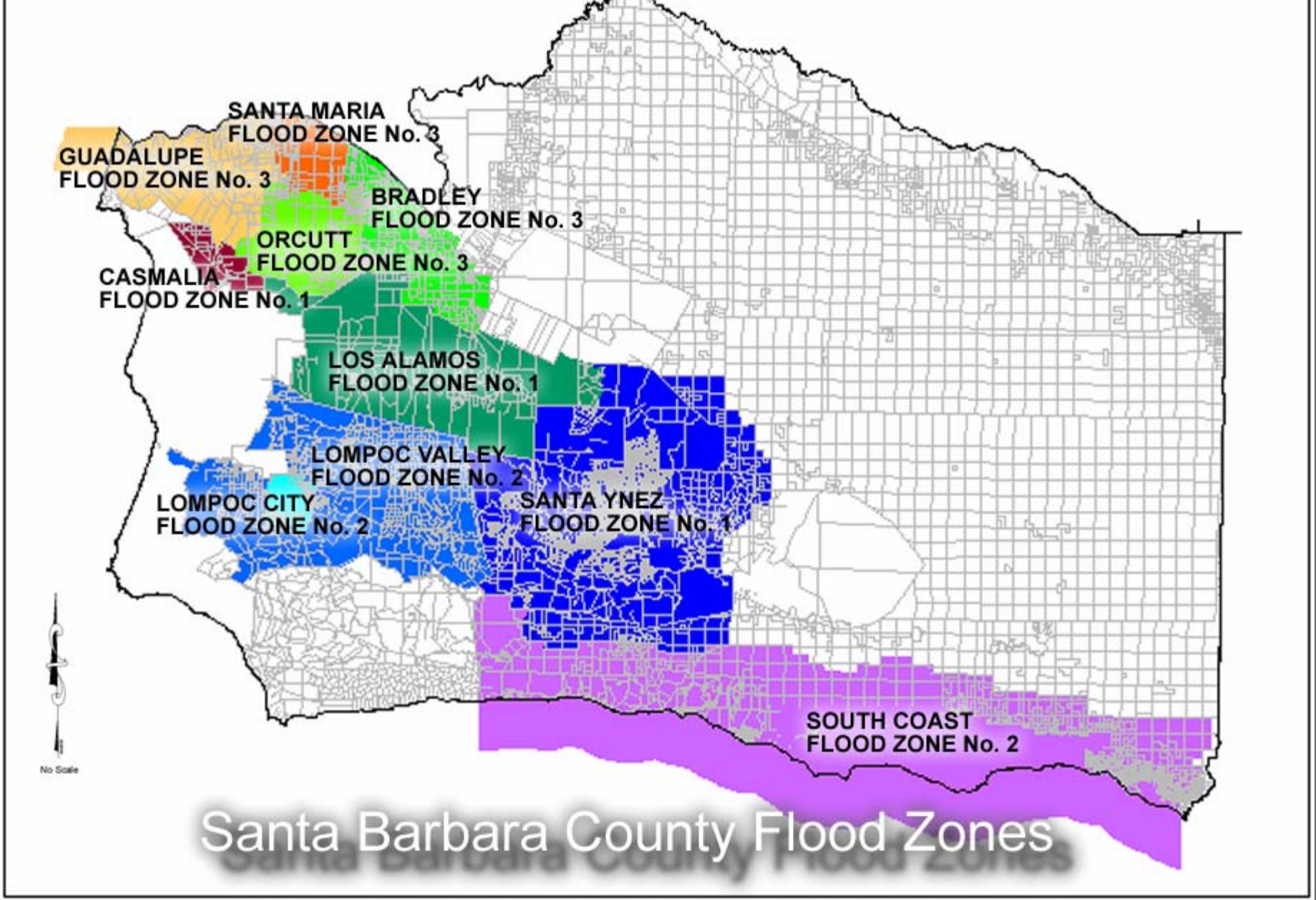


Flood Control Benefit Assessment Program



Flood Control Benefit Assessment Program FY 2006 - 07

- Voter Approved Assessments**
- Provision for Annual CPI Increases to
Protect Program Purchase Power**
- This Year CPI 4.7%**

Flood Control Benefit Assessment Rates FY 06-07

	Group A		Group B		Group C		Group D		Group E	
	FY 2006-2007		FY 2006-2007		FY 2006-2007		FY 2006-2007		FY 2006-2007	
	\$/Ac	Min \$ <u>Assmt</u>	\$/Ac	Min \$ <u>Assmt</u>	\$/Ac ¹ (over 0.3 Ac only)	Min \$ <u>Assmt</u>	\$/Ac	Min \$ <u>Assmt</u>	\$/Ac	Min \$ <u>Assmt</u>
Bradley #3	\$35.03	\$10.51	\$26.27	\$7.88		\$5.29	\$1.31	\$0.39	\$0.12	\$0.04
Guadalupe #3	\$18.55	\$5.56	\$13.92	\$4.18		\$2.79	\$0.70	\$0.21	\$0.07	\$0.02
Lompoc City #2	\$78.25	\$23.48	\$58.68	\$17.60		\$11.74	\$2.94	\$0.88	\$0.28	\$0.08
Lompoc Valley #2	\$30.56	\$9.16	\$22.90	\$6.87		\$4.57	\$1.14	\$0.34	\$0.11	\$0.03
Los Alamos #1	\$38.85	\$11.66	\$29.15	\$8.74		\$5.83	\$1.45	\$0.43	\$0.14	\$0.04
<u>Orcutt #3</u>	\$23.28	\$6.99	\$17.46	\$5.24		\$3.50	\$0.87	\$0.26	\$0.09	\$0.03
Santa Maria #3	\$74.49	\$22.35	\$55.88	\$16.80		\$11.17	\$2.80	\$0.84	\$0.26	\$0.08
SMR Levee	\$20.10	\$6.03	\$15.07	\$4.52		\$3.02	\$0.75	\$0.23	\$0.08	\$0.02
<u>Santa Ynez #1</u>	\$17.16	\$5.15	\$12.87	\$3.86		\$2.57	\$0.64	\$0.19	\$0.07	\$0.02
South Coast #2	\$130.77	\$39.23	\$98.07	\$29.42		\$19.61	\$4.90	\$1.47	\$0.48	\$0.14

Questions

Jamison Lake

Flood Control Benefit Assessment Rates FY 05-06

	Group A		Group B		Group C		Group D		Group E	
	FY 2005-2006		FY 2005-2006		FY 2005-2006		FY 2005-2006		FY 2005-2006	
	\$/Ac	Min \$ Assmt	\$/Ac	Min \$ Assmt	\$/Ac ¹ (over 0.3 Ac only)	Min \$ Assmt	\$/Ac	Min \$ Assmt	\$/Ac	Min \$ Assmt
Bradley	\$33.45	\$10.04	\$25.09	\$7.53		\$5.02	\$1.25	\$0.37	\$0.11	\$0.04
Guadalupe	\$17.71	\$5.31	\$13.29	\$3.99		\$2.66	\$0.67	\$0.20	\$0.06	\$0.03
Lompoc City	\$74.74	\$22.42	\$56.05	\$16.81		\$11.21	\$2.81	\$0.84	\$0.27	\$0.08
Lompoc Valley	\$29.18	\$8.75	\$21.88	\$6.56		\$4.37	\$1.09	\$0.33	\$0.10	\$0.04
Los Alamos	\$37.11	\$11.13	\$27.84	\$8.35		\$5.57	\$1.38	\$0.42	\$0.14	\$0.04
Orcutt	\$22.24	\$6.67	\$16.67	\$5.00		\$3.34	\$0.83	\$0.25	\$0.08	\$0.03
Santa Maria	\$71.15	\$21.35	\$53.37	\$16.01		\$10.67	\$2.67	\$0.80	\$0.25	\$0.08
SMR Levee	\$19.20	\$5.76	\$14.40	\$4.32		\$2.88	\$0.72	\$0.22	\$0.07	\$0.03
Santa Ynez	\$16.39	\$4.92	\$12.30	\$3.69		\$2.45	\$0.61	\$0.18	\$0.06	\$0.03
South Coast	\$124.90	\$37.47	\$93.67	\$28.10		\$18.73	\$4.68	\$1.40	\$0.46	\$0.14