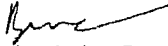


**MEMORANDUM**

To: Greg Scott

Date: September 14, 2010

File: W40575.5

From:  Chandrashekar Basavalinganadoddi, P.E.Subject: **Santa Barbara Channel Hazards Removal Program**

Per your request we have prepared a list of the Santa Barbara Channel Hazards associated with the oil industry. The attachment contains a list and a brief description of sites along with the photographs that have coastal hazards which are remnants of derelict structures. These hazards have been left in place by companies involved in doing business in the oil industry. CSLC has not been able to identify the responsible parties for these hazards.

Please note the following:

1. These hazards are within CSLC's jurisdiction and CSLC has already obtained the necessary permits to remove these hazards.
2. CSLC has a contract in place for removal of these hazards. As soon as the funds become available, the contractor will be asked to proceed with the hazards removal work.
3. The hazards removal work is very tide and sea state sensitive. Most of the hazards get exposed to maximum extent during low tide and low sea state conditions when beach sand erosion is maximum. As such, the hazards removal work needs to be planned around the low tide and low sea state conditions. The winter season from December to March is the most desirable period for the removal work. During non-winter months, beach sand levels are high and most hazards are not visible and cannot be located for removal.
4. The extent and location of observed hazards is not fixed. The exposure of hazards depends on the tide and sand level at the beach.

If you have any questions or need additional information, please contact me at (562)-590-5209 or Madhu Ahuja at (562) 590-5208.

CC:  
Madhu Ahuja, Larry Philip, Eric Gillies

## ATTACHMENT

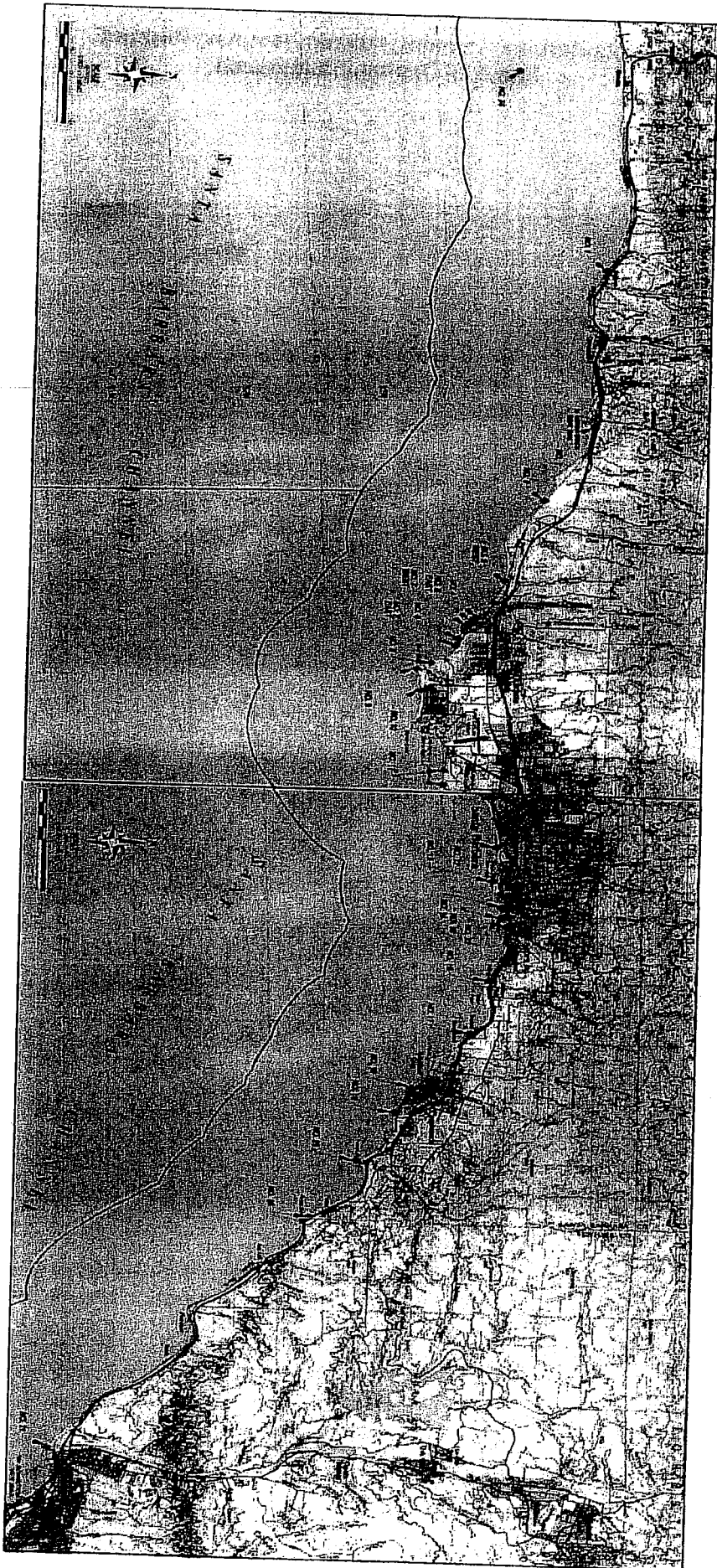
### **Santa Barbara Channel Hazards Removal Program (W40975.5)**

(September 14, 2010)

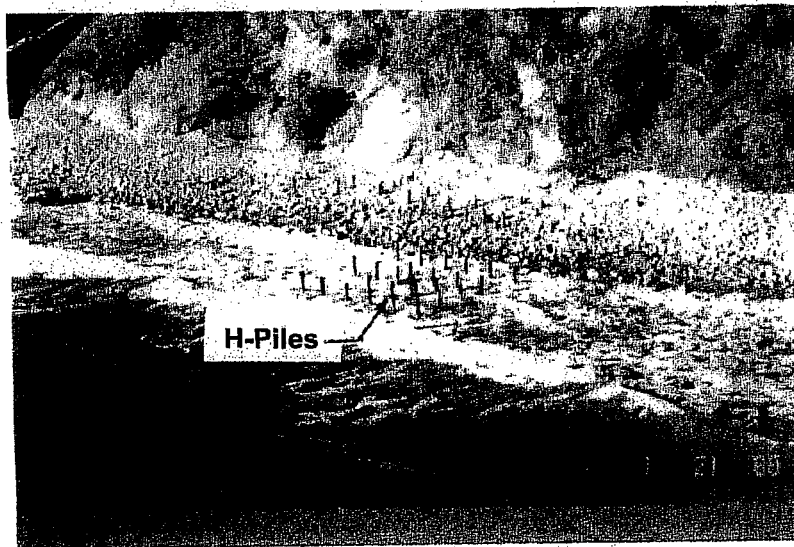
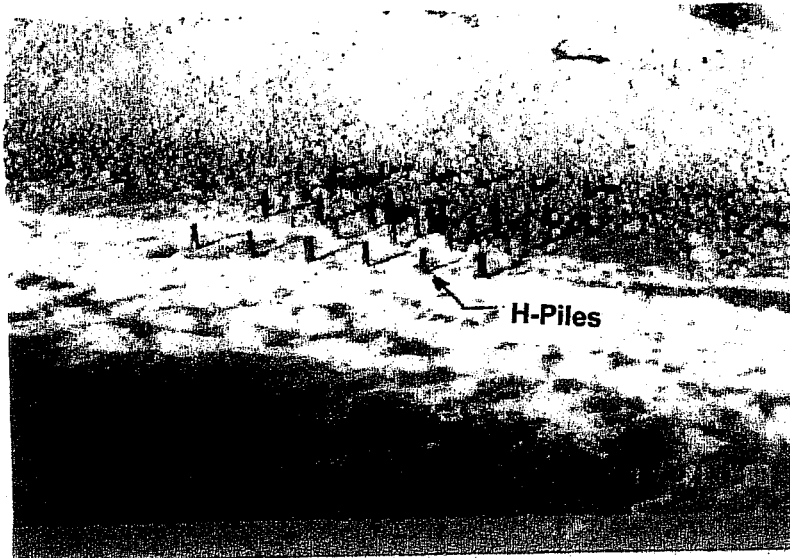
List of Sites where hazards have been left in place by Oil Industry:

- Site 2: (184) 6-Inch H Piles + 3 Well Casings
- Site 4: (25) 6-Inch H Piles
- Site 5: (128) 6-Inch H Piles + 20 Wood Piles + (2) 12-inch Well Casings
- Site 6: (80) 6-Inch H Piles + (3) 14" Well Casings + 500' of 6" Pipeline
- Site 7: (79) 6-Inch H Piles
- Site 8: (30) 2 7/8" Pipe Frames + (2) 6-Inch Diam. Well Casings
- Site 9: (8) 6-Inch H Piles + (4) 6-Inch Diam. Well Casings
- Site 10: (55) 6-Inch H Piles + (4) 6-Inch Diam. Well Casings
- Site 16: (31) 6-Inch H Piles + (1) 8-Inch Diam. Well Casing + (3) 12-Inch Diam. Well Casings + 600 ft electrical cable
- Site 17: (12) 8-Inch H Piles
- Site 18: (2) 12-Inch Diam. Well Casings
- Site 19: (10) 12-Inch H Piles
- Site 24: Pauley Well Offshore Hazard, 10-Inch Diam. Well Casing

**Santa Barbara Channel Hazards Removal Program  
Area and Site Location Map**



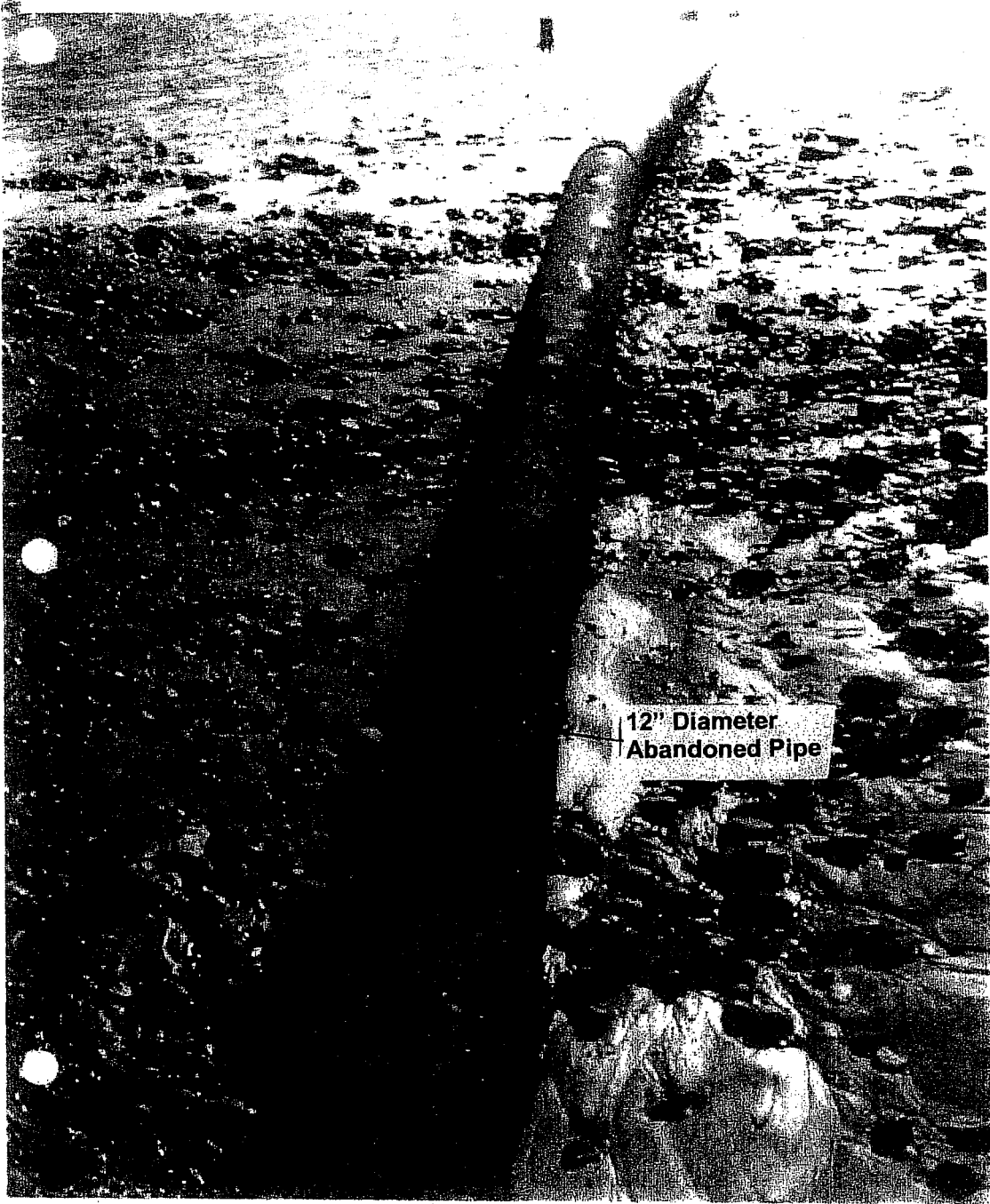
**Santa Barbara Channel Hazards Removal Program  
Site 2, El Capitan State Beach**



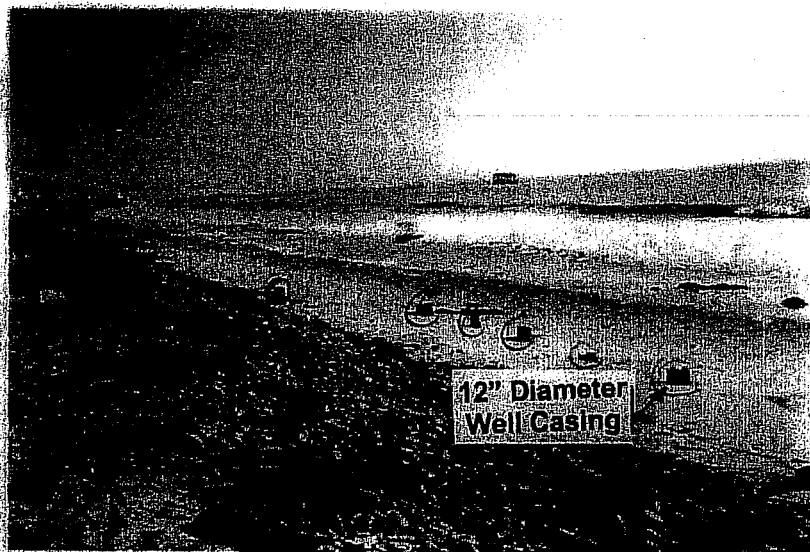
Santa Barbara Channel Hazards Removal Program  
Site 4, Ellwood West



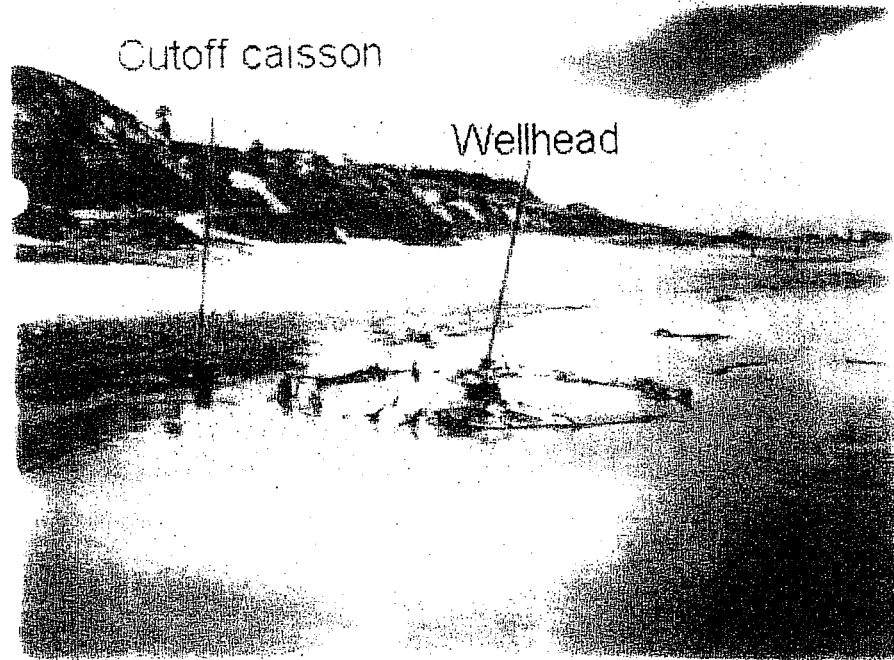
**Santa Barbara Channel Hazards Removal Program  
Site 4, Ellwood West**



**Santa Barbara Channel Hazards Removal Program  
Site 5, Ellwood East**

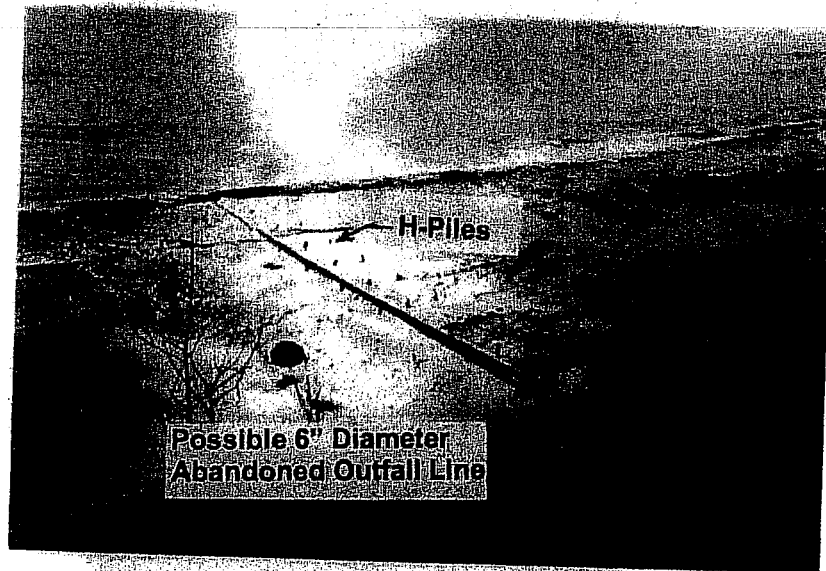


**Santa Barbara Channel Hazards Removal Program  
Site 6, Santa Barbara Shores A**

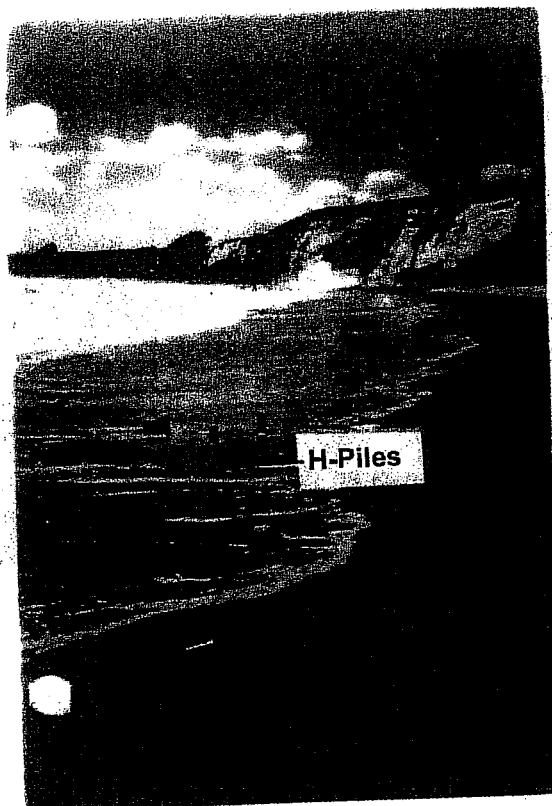




**Santa Barbara Channel Hazards Removal Program  
Site 6, Santa Barbara Shores A**

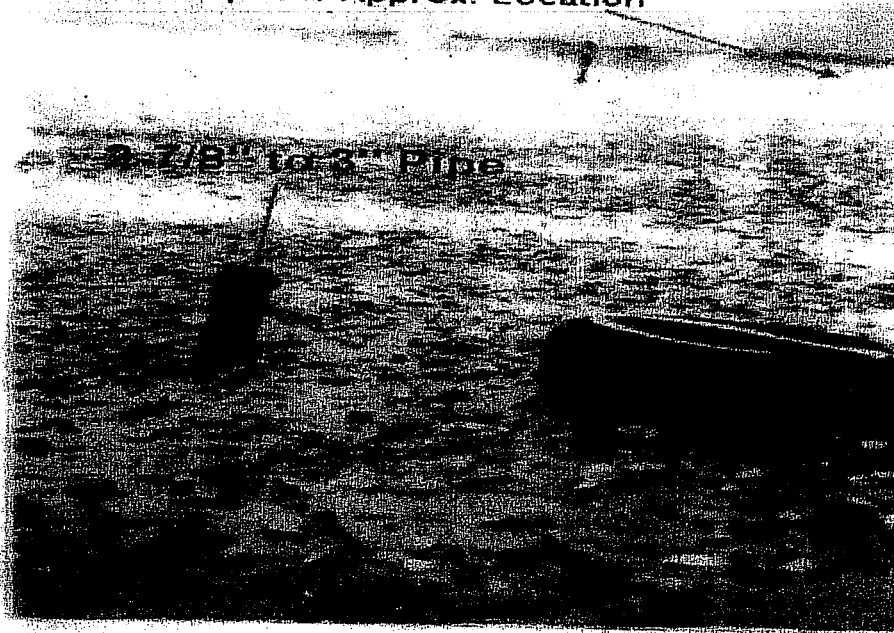


**Santa Barbara Channel Hazards Removal Program  
Site 7, Santa Barbara Shore B**



**Santa Barbara Channel Hazards Removal Program  
Site 8, Devereaux Slough**

**Possible Old Well Head off UCSB  
Venoco Pipeline Approx. Location**

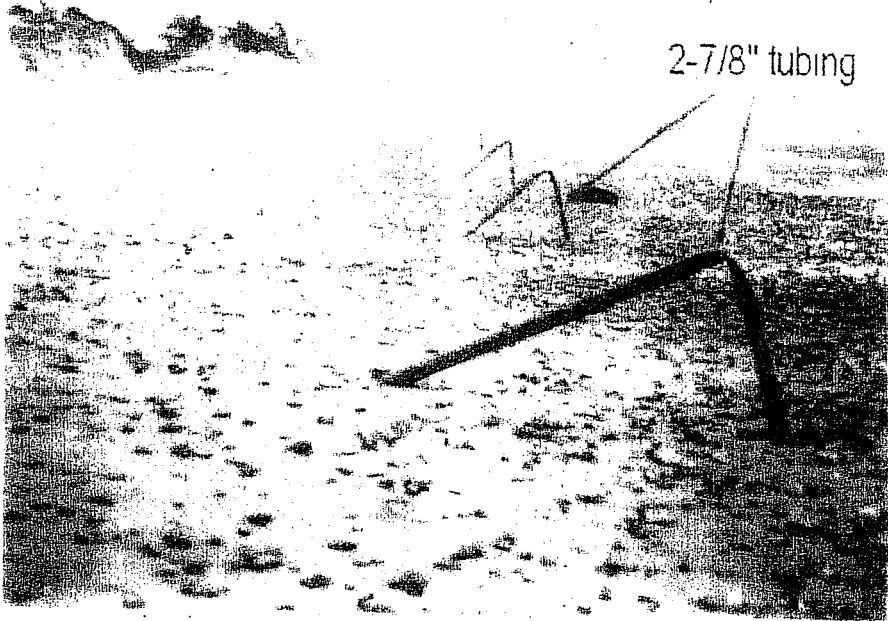


**2 7/8" to 3" Pipe**

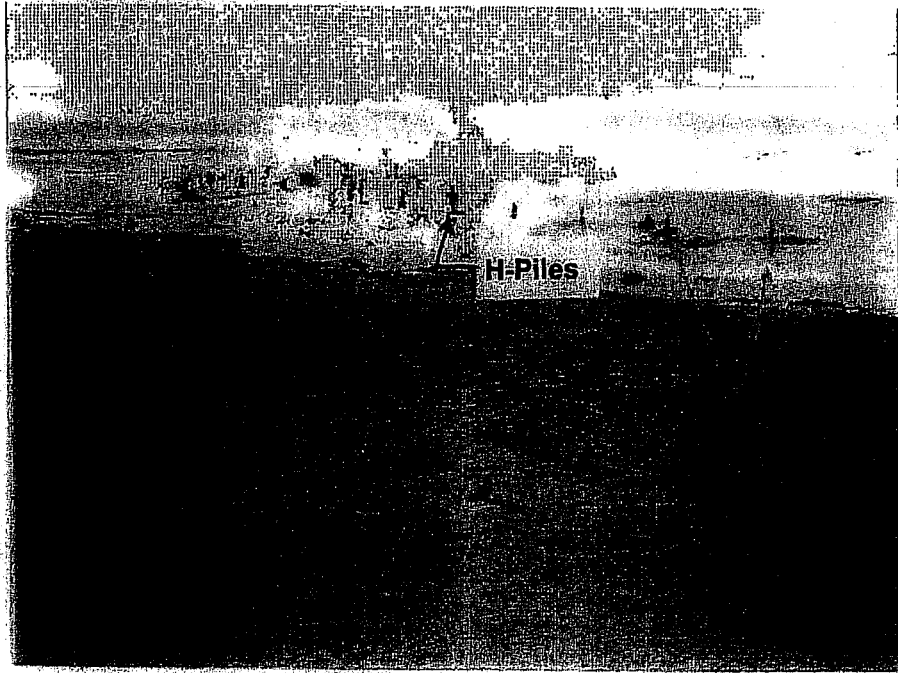
Santa Barbara Channel Hazards Removal Program  
Site 8, Devereaux Slough

West End of UCSB Campus

2-7/8" tubing



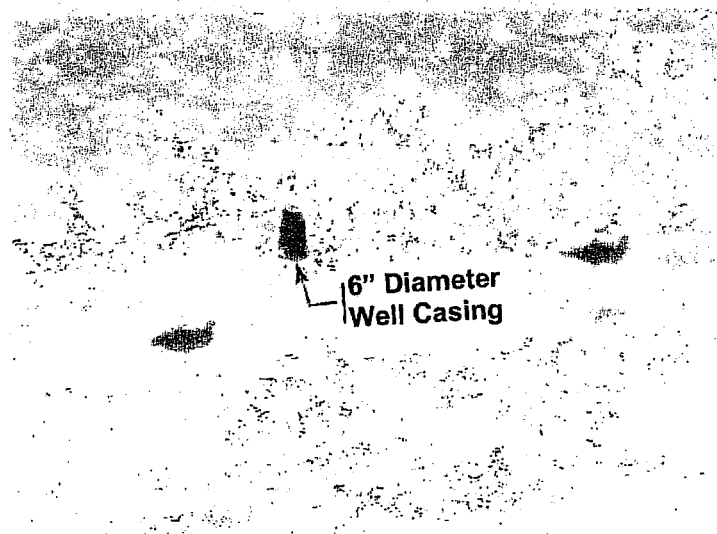
**Santa Barbara Channel Hazards Removal Program  
Site 9, Devereaux (Coal Oil) Point**



**Santa Barbara Channel Hazards Removal Program  
Site 10, Isla Vista**

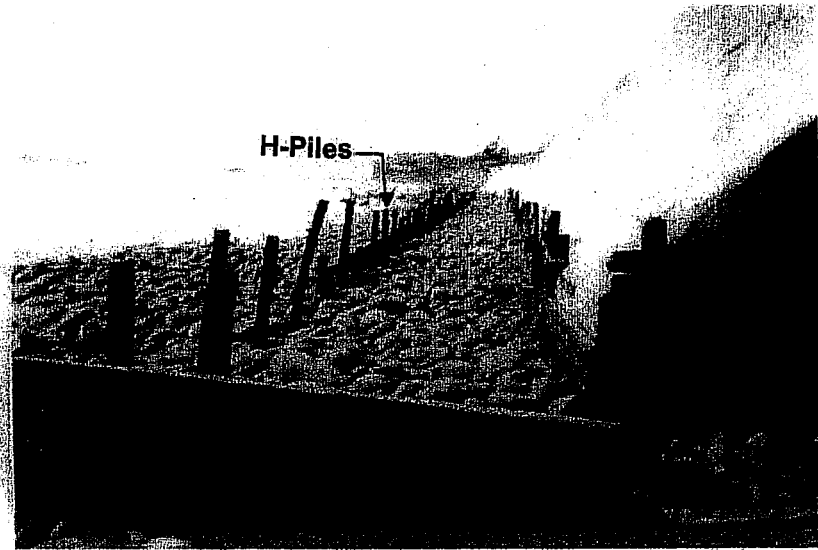


**PHOTO #1: HAZARD SITE #10, CAMERA FACING SOUTH FROM  
ISLA VISTA PARK (MVC-109F).**

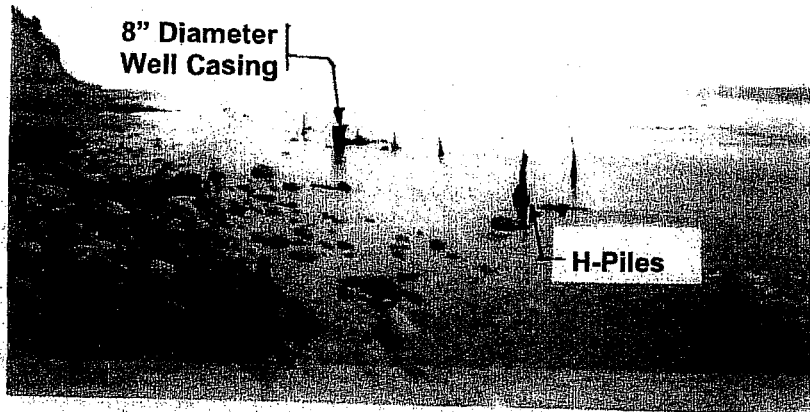


**PHOTO #2: CLOSE-UP HAZARD SITE #10, CAMERA FACING SOUTH (MVC-109F).**

**Santa Barbara Channel Hazards Removal Program  
Site 16, Ortega at Summerland**



**Santa Barbara Channel Hazards Removal Program  
Site 16, Ortega at Summerland**



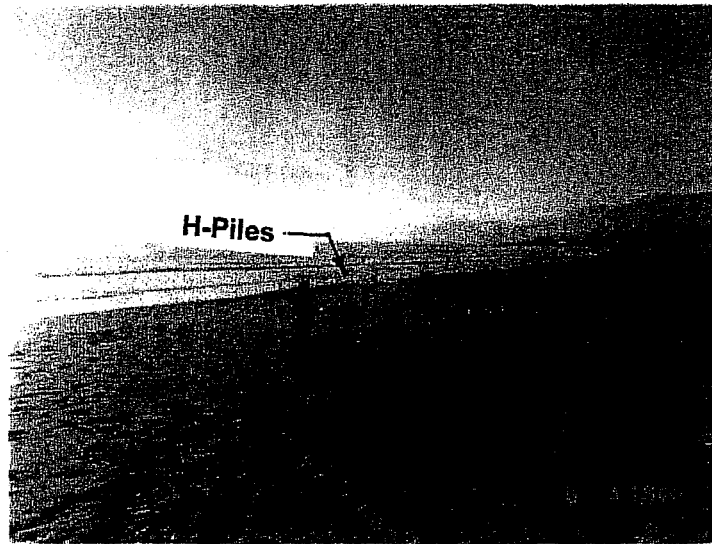


**Santa Barbara Channel Hazards Removal Program  
Site 17, Santa Clause Lane**

---

**Photograph for this site  
Not Available**

**Santa Barbara Channel Hazards Removal Program  
Site 18, Carpinteria State Beach**



**PHOTO #1: APPROXIMATE LOCATION OF HAZARD SITE #18,  
CAMERA FACING WEST (0140F)**



**PHOTO #2: APPROXIMATE LOCATION OF HAZARD SITE #18, CAMERA FACING  
NORTH TOWARD THE CARPINTERIAN CREEK BRIDGE (0142F)**

**Santa Barbara Channel Hazards Removal Program  
Site 19, Casitas Pier**



**PHOTO #2: HAZARD SITE #19: CAMERA FACING SOUTHEAST TOWARD SEAL  
ROOKERY. NOTE SEALS IN LOWER PORTION OF FRAME (ABOVE YELLOW  
ARROWS) AND METAL DEBRIS IN UPPER RIGHT (RED CIRCLE) (0151F).**

Santa Barbara Channel Hazards Removal Program  
Site 24, Pauley Well

PAULEY PETROLEUM, INC.  
CORE HOLE # 7B-19

LOCATION X= 1,346,304 Y= 349,600 LAMBERT ZONE 5  
WATER DEPTH 224' RKB 23' ABOVE SEA LEVEL

CURRENT CONDITION

