

Katherine Douglas

Public Comment - WE Watch

---

**From:** Nancy Emerson <nancyfemerson52@gmail.com>  
**Sent:** Sunday, February 2, 2025 8:48 PM  
**To:** sbcob  
**Subject:** Feb. 11 Board meeting, WE Watch Letter and 3 attachments, Outdoor Lighting Ordinance Amendments  
**Attachments:** WEWBdSupOutdoorLtgOrdLetter2325.docx; WEWOutdoorLtgOrdTextRevisions2125.docx; Fullyshieldedstrnglts2.jpg; Downlightinglandscape.jpg

**Caution: This email originated from a source outside of the County of Santa Barbara. Do not click links or open attachments unless you verify the sender and know the content is safe.**

Dear staff,

Please add the attached information to the record for the Feb. 11 Board meeting, Agenda Item: Outdoor Lighting Ordinance Amendments. All the attachments, except the two Save Our Stars brochures, are included with this e-mail. I have removed those items from the list at the end of the letter.

Regular mail letters have been sent to each supervisor that include the 2 brochures.

Thank you.  
Nancy Emerson

*WE Watch, P.O Box 830, Solvang CA 93464*

February 3, 2025

Board of Supervisors, 4<sup>th</sup> floor  
Santa Barbara County  
105 E. Anapamu St.  
Santa Barbara CA 93101



Dear Supervisors:

WE Watch's Save Our Stars Committee is confident the proposed Countywide Outdoor Lighting ordinance will make our County much more dark sky friendly with just four recommended tweaks, thanks to the quality of work by Ben Singer and Alex Tuttle. It includes the critical building blocks of fully shielded or full cut-off fixtures, plus carefully controlled light bulbs' lumens and Kelvin as well as fixtures' height and angle.

It means light will be on the ground where needed rather than lighting the night sky while causing light pollution problems for neighbors and wildlife. Also, it significantly decreases energy use. *(See our Dark Sky Neighbor Friendly Lighting brochure.)*

In Item 1 we ask for clarification of the Purpose. In Items 2 and 3 we tighten the proposed ordinance. Item 4 includes the CA Energy Commission's requirements and recommends removing a confusing and difficult to enforce curfew. *(See the enclosed marked up text for context, with revisions in black.)*

**1.Pg1. 4.A. Purpose.** Add to 2<sup>nd</sup> sentence: "These standards conserve energy, and preserve the nighttime sky **and protect neighbors and wildlife**, while maintaining nighttime safety, utility, security and productivity." Protecting neighbors and wildlife, not just the wildlife corridors, is equally important to preserving the nighttime sky and it is neighbor's complaints about light pollution that intersect most intimately with the ordinance.

**2.Pg. 6.E.1.a. Fully shielded or full-cutoff fixtures. String Lights.** Delete exception for string lights. They are widely used at residences and businesses causing sky glow plus light trespass on neighboring properties. There is no good reason to allow this one type of lighting an exception when removing it makes the ordinance totally consistent and enables code enforcement staff to resolve complaints about these lights. Fully shielded string lights are readily available. *(See Fully Shielded String Lights photos)*

**3.a. Pg. 7, 6. Kelvin.** Sentence 2. We think no security fixture needs the blue-white intensity of 4000K for its light bulb since even security fixtures now routinely have 2700K bulb options. We recommend that all fixtures not exceed 2700K. Astronomers

and wildlife researchers are asking for a 2500K limit but those bulbs are not yet widely available. (*See our Light Pollution & Wildlife brochure for more detailed information about wildlife research findings.*)

**3.b..Pg. 8.F.2. Description.** Sentence 2. The above Kelvin requirement determines the need to add the term “Kelvin” to the items in the description list.

**4. Pg 7, Sec. 7. Timing Controls.** If you further strengthen the ordinance by adopting our Items 1-3, plus the CA Energy Commission’s required Lighting Controls, the curfews in Sec. 7.a. will be redundant. The CA Energy Commission requirements conserve energy through devices that control nighttime light and assure that lighting is turned off during the day.

Sincerely,

Nancy Emerson, Chairperson, Save Our Stars Committee & Contact, Central Coast Chapter, Dark Sky International  
WE Watch Board of Directors

**Enclosures:** WE Watch/Save Our Stars Proposed Revisions, Markup  
Photos of fully shielded string lights  
Photos of down lighting

## WE Watch/Save Our Stars Proposed Revisions, Outdoor Lighting Ordinance Amendments, 2/1/25

Pg.4.A.Purpose. The purpose of this Section is to create standards for outdoor lighting that minimize light pollution caused by inappropriate or misaligned light fixtures. These standards conserve energy, ~~and preserve the nighttime sky, protect neighbors and wildlife while maintaining night-time safety, utility, security and productivity.~~ The County of Santa Barbara recognizes that the unique development patterns and environments of the County created ideal areas for astronomical observation and enjoyment of the nighttime sky. ~~Additionally, resources in the County warrant the protection of nighttime viewsheds and wildlife corridors from light trespass. The County, through the provisions contained herein, intends to preserve and protect the nighttime environment of the County by regulating unnecessary and excessive outdoor lighting.~~

Formatted: Font color: Text 1, Strikethrough

Pg. 6.E.1.a. Shielding. All outdoor light fixtures shall be fully shielded or full cut off, except as provided below.

- a. ~~Decorative string lights are not required to be shielded.~~

Pg.7. 6. Kelvin. Light fixtures for outdoor security lighting shall not exceed 4,000 Kelvin. All other outdoor light fixtures shall not exceed ~~3,000~~ **2,700** Kelvin.

Formatted: Font color: Text 1, Strikethrough

Pg. 8, F.2. Description of the outdoor lighting fixtures including manufacturers catalog cuts and drawings. Descriptions and drawings should include lamp or bulb type, wattage, lumen output, **Kelvin**, beam angle and shielding.

Pg. 7, 7. Timing Controls. ~~Outdoor lighting shall be turned off during daylight hours and between 9 p.m. and sunrise the following day, except as provided below.~~

a. When People are Present. ~~Outdoor lighting may remain on when people are present in the outdoor areas being illuminated, except as provided below.~~

(1) In Residential Zones and any area adjacent to a Residential Zone, ~~outdoor lighting shall be turned off as follows:~~

(a) Sunday through Thursday: ~~between 10:00 p.m. and sunrise the following day.~~

(b) Friday and Saturday: ~~between midnight and sunrise the following day.~~

b. Code Required Lighting, **NO CHANGES**

c. Safety and Security Lighting

(1) Motion-Controlled Security Lighting. ~~Security lighting may be controlled by a motion sensor switch between the hours of 9:00 p.m. and sunrise the following day provided the lighting does not remain on longer than five minutes after activation.~~

(2) Commercial and Industrial Zones Not Adjacent to Residential Zones. ~~Outdoor security lighting in Commercial and Industrial Zones not adjacent to a Residential Zone may remain on between 9:00 p.m. and~~

~~sunrise the following day provided lights are dimmed to the minimum level to meet safety and security requirements and are on a timer or~~

~~sensor that automatically extinguishes the light when sufficient daylight is available.~~

~~(3) Additional Security Lighting. Additional security lighting may be allowed through the approval of the Conditional Use Permit or Development Plan, as applicable.~~

d. On-Premise Signs. NO CHANGES

e. Private Recreational Courts. NO CHANGES

**Substitute the following text for 7.a.(1), & c.,(1) & (2)  
Requirements from 2022 CA Energy Commission, Non-Residential & Residential**

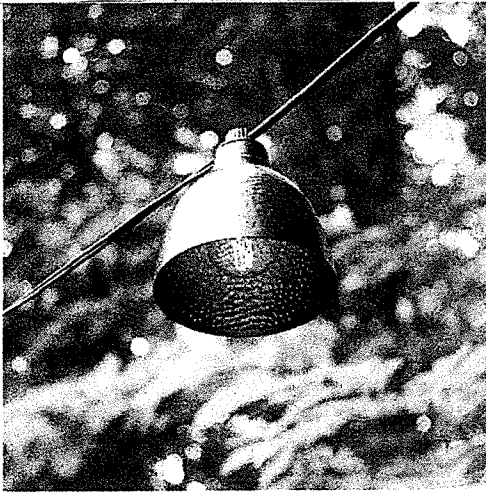
**Pg. 7. Sec. 7. Mandatory Lighting Controls.** All outdoor lighting must be controlled by one of the following combinations and a manual on/off switch that does not override the chosen combination so that light fixtures are off when daylight is available and light is off or dimmed when not needed at night.

- a. Photocell and motion sensor
- b. Photocell and automatic time switch
- c. Astronomical time clock
- d. EMCS (Energy Management Control System) meeting these requirements:
  - (1) Having features of an astronomical time clock
  - (2) Does not allow the luminaire to be on during the day
  - (3) May be programmed to automatically turn lighting off at night
- e. In addition, in multi-family and non-residential zones, all outdoor lighting must be equipped with controls that are capable of
  - (1) Reducing outdoor lighting power by 50%-90%
  - (2) Turning lighting off during scheduled unoccupied periods
  - (3) Allowing to schedule at least two nighttime periods with independent lighting levels.
- f. Motion activated lighting shall be programmed to remain on no more than 10 minutes after activation.

g. Code Required Lighting. Building or other construction and safety code required lighting for steps, stairs, walkways, entrances, parking areas, and other building and site features that is dimmed to the minimum light level necessary to meet code requirements.

h. On-Premise Signs. All illuminated advertising signs shall not be illuminated between 11:00 p.m. and sunrise the following day, except that on-premises signs may be illuminated while the business is open to the public.

i. Private Recreational Courts. Lighting of private recreational sports courts shall be prohibited between 9:00 p.m. and sunrise the following day.



Roll over image to zoom in

Amazon.com

# LumaBase Electric Café String Lights with 10 Brown Metal Domes

\$40<sup>20</sup>

Visit the Lumabase Store

3.4 7 ratings

\$40<sup>20</sup>

FREE Returns

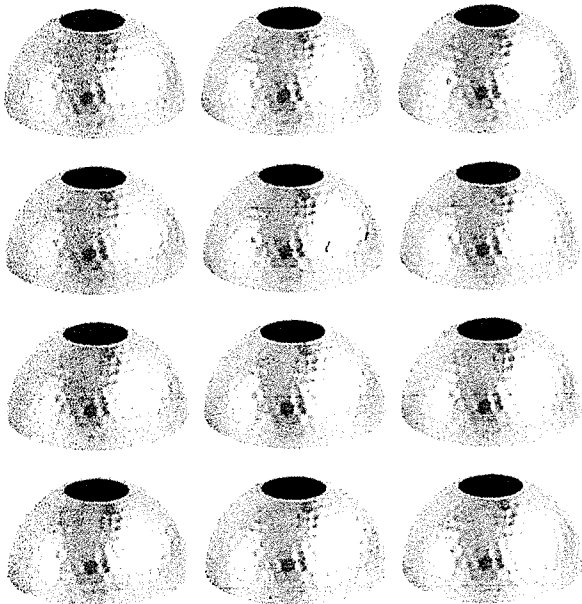
Apply now and get a \$60 Amazon Gift Card upon approval of the Prime Store Card, or see if you pre-qualify with no impact to your credit bureau score.

**Brand** Lumabase  
**Color** Brown  
**Material** Glass, Plastic, Metal  
**Style** Vintage  
**Light fixture form** Island

### About this item

- 134" Electric Cord with 10 Bulbs and 10 Brown Domes
- UL Listed Cord with End to End Connectors (Connect up to 3 Cords)
- C7-7 Watt Steady Incandescent Light Bulbs (*soft white*)
- 12" Spacing Between Bulbs
- Weather Resistant for Indoor or Outdoor Use

*Fully Shielded String Lights*  
*Fully Shielded Bulb Shades*



### Exclusive

## 3.75 in. Gold Light Bulb Shade for Outdoor String Lights (12-Pack)

by Hampton Bay > Shop the Collection >

★★★★★ (3)

Goleta Store

\$19<sup>97</sup>

✓ 3 in stock Aisle BW, Bay 031

- Decorative shade for indoor or outdoor string light strands
- Easy install- remove bulb from strand, add shade, replace bulb
- String light strand not included, must be purchased separately



## Hanging Lights / Down Lights

Down lighting is a technique that is often used to simulate natural light from the sun, moon and stars and create drama in a garden or landscape setting. It can be used on many types of surfaces including home exteriors, trees, patios or just about any overhead structure. <https://landscapelightingproducts.com/>



### 2150-CSN Solid Copper Specialty Hanging Light by Vista Lighting

\$120.26 - \$194.60

Vista Lamp No Lamp  \$120.26

### 2150-CSN Solid Copper Specialty Hanging Light by Vista Lighting

This compact low voltage hanging light fixture is constructed of heavy-gauge, extruded, solid copper tubing and a precision CNC-machined, solid brass base. The housing is fitted with dual silicone o-ring gaskets to ensure a superior weather-tight seal. A tempered, shock and heat resistant, soda-lime glass lens safeguards the lamp and optics. A solid brass loop with a 6' stainless steel cable-hanger is also included

The pendant light features intricate detailing, showcasing the artisanal skill involved in its creation. The warm glow emitted from within creates a cozy ambiance, making it perfect for dining areas, kitchens, or entryways. Its adjustable chain allows for customizable hanging lengths, accommodating various ceiling heights and design preferences.

Beyond its aesthetic appeal, the 2150-CSN is engineered for performance. Compatible with a variety of bulbs, it provides ample illumination while allowing you to personalize the atmosphere with your preferred light intensity.



\$141.87 - \$186.48

6512 Specialty Hang Light by Vista Light



\$102.98 - \$134.73

7213 Hanging Light by Vista Lighting



\$100.44 - \$174.78

2238 Specialty Hanging Light by Vista Lighting



\$147.35 - \$191.96

2152-CSN Solid Copper Specialty Hanging Light by Vista Lighting



\$151.53 - \$196.14

9240 Hanging Light by Vista Lighting



\$122.40 - \$193.45

4210 Hanging Light by Vista Lighting



\$122.40 - \$193.45

4216 Hanging Light by Vista Lighting



\$154.95

12v Hanging Tree Light - 3811 by Wac Light



\$193.95

12v Hanging Tree Light - 3821 by Wac Lighting