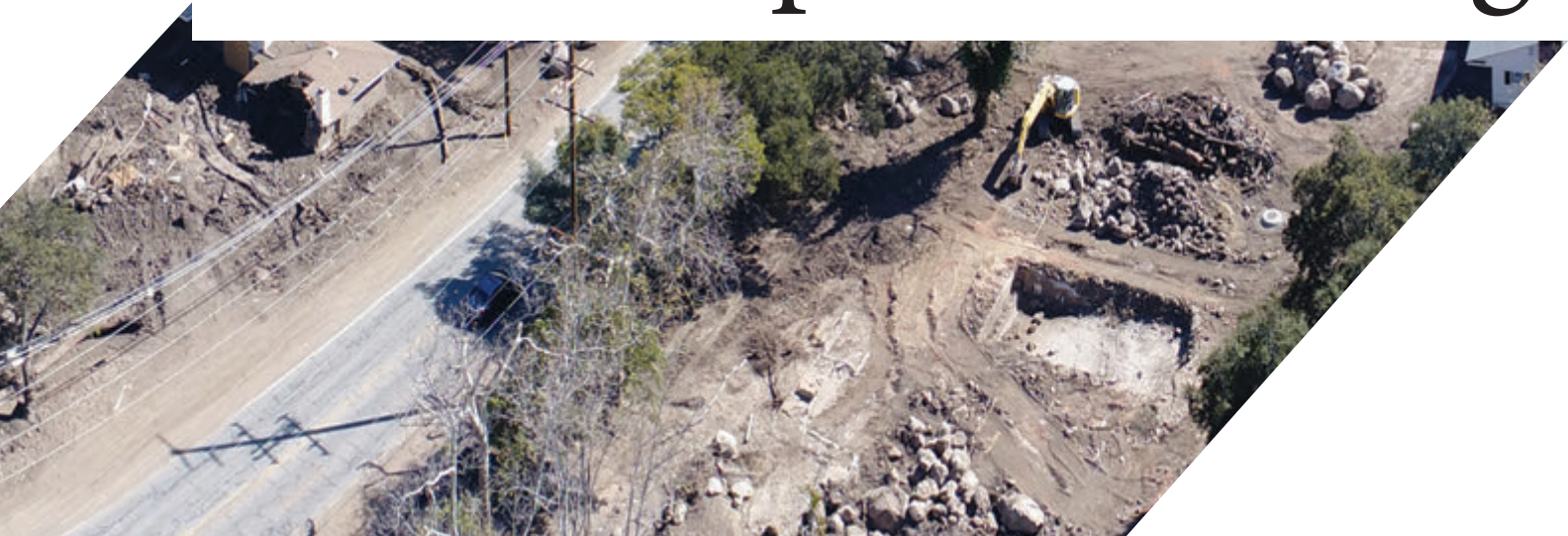




Santa Barbara County Public Works

Thomas Fire Burn Area Storm Response Photography





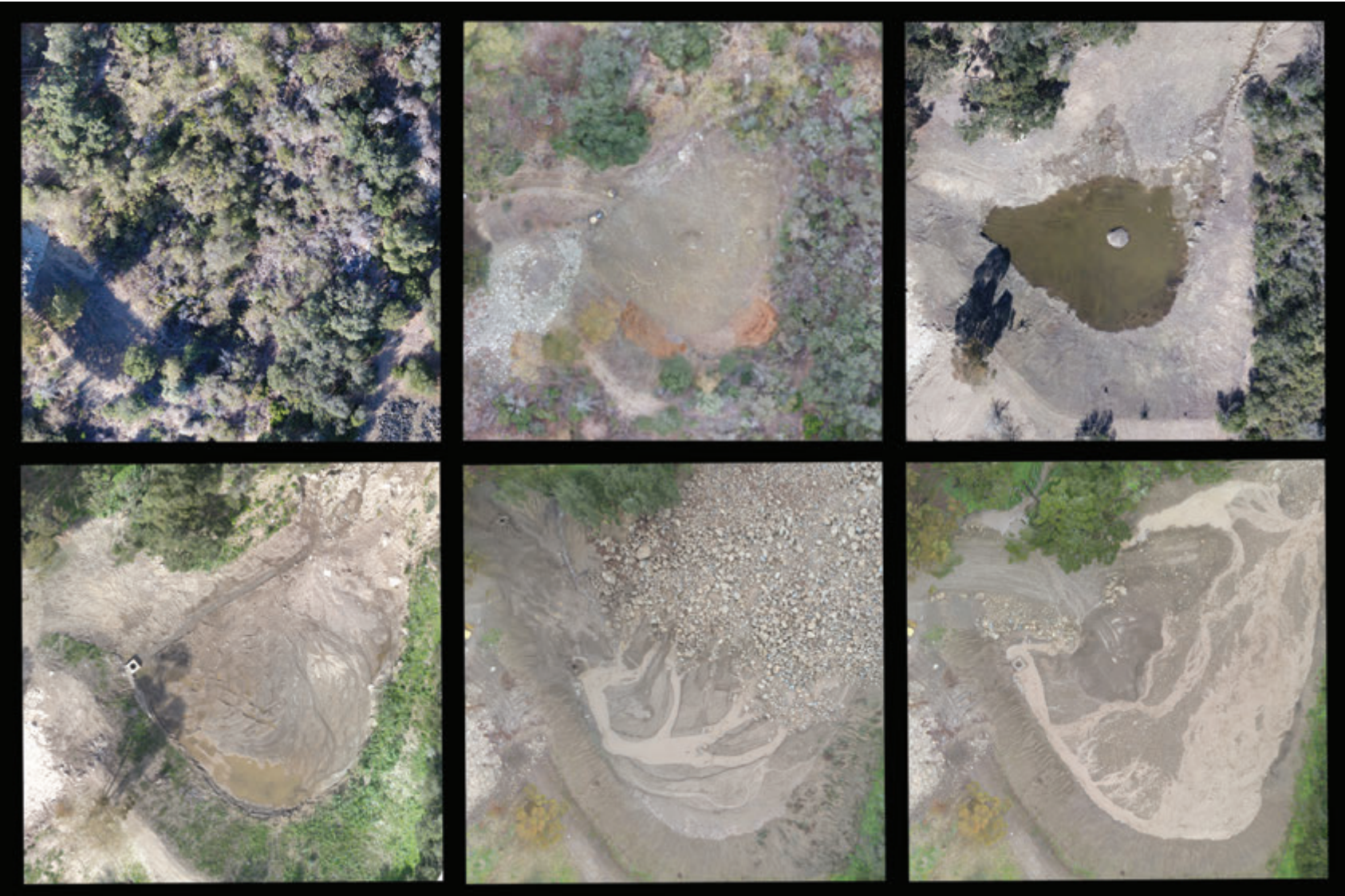
The Ashley Road bridge site two months before, two weeks after, and five months after the 1/9 Debris Flow.



*Left: The Ashley Road Bridge two months before and two weeks after the 1/9 Debris Flow.
Right: Romero Creek at Sheffield Road on February 5, 2018 and February 28, 2018.*



*Left: The Santa Monica Debris Basin four months before and one month after the 1/9 Debris Flow.
Right: The Cold Springs Debris Basin on January 15, 2018 and February 26, 2018.*



Six photos of the Romero Debris Basin.
Top - left to right: October 2017, January 5, 2018, January 20, 2018.
Bottom - left to right: December 2018, January 2019, February 2019.



Olive Mill and Hot Springs Road. February 28, 2018.



Carpinteria Creek at Carpinteria State Beach. January 28, 2018.



Washed out road. Cold Springs Trail low water crossing, June 28, 2018.



Sediment placement on Carpinteria State Beach at Ash Avenue. February 25, 2019.