

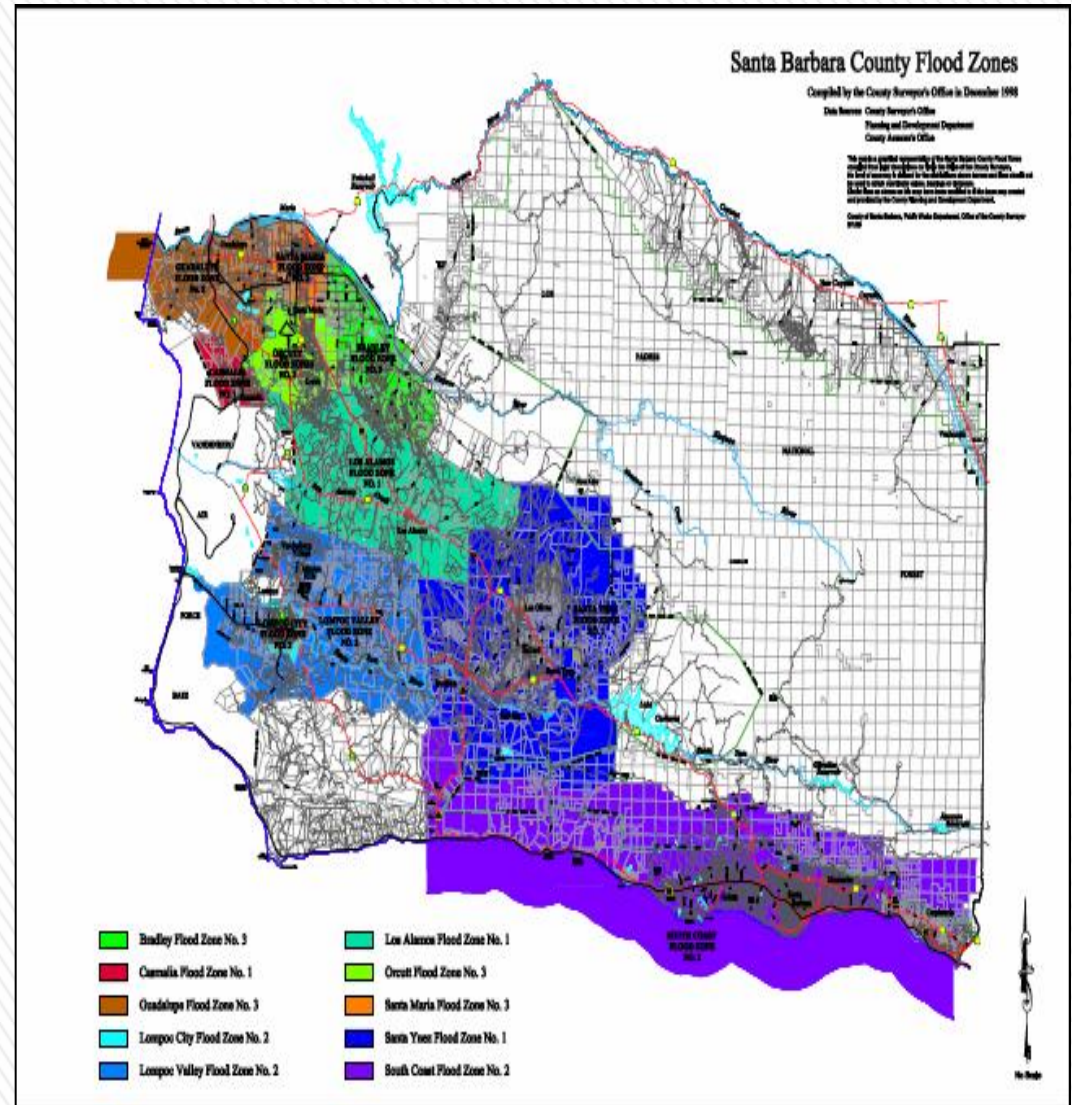


Santa Barbara County Flood Control District

**Benefit Assessment Program Update
Board of Supervisors Meeting
June 21, 2016**

Flood Control Benefit Assessments

- » Voter Approved Assessments
- » Assessment Approved with an Annual CPI Adjustment to Preserve Funding Levels
- » Proposed Increase 1.7% for FY 2016-17



Proposed Benefit Assessment Rates FY 2016-17

| | Group A | | Group B | | Group C | | Group D | | Group E | |
|------------------|--------------|--------------|--------------|--------------|---|--------------|--------------|--------------|--------------|--------------|
| | FY 2016-2017 | | FY 2016-2017 | | FY 2016-2017 | | FY 2016-2017 | | FY 2016-2017 | |
| | \$/Ac | Min \$ Asset | \$/Ac | Min \$ Asset | \$/Ac ¹ (over 0.3 Ac only) | Min \$ Asset | \$/Ac | Min \$ Asset | \$/Ac | Min \$ Asset |
| Bradley #3 | 41.64 | 12.50 | 31.23 | 9.37 | 0.00 | 6.29 | 1.56 | 0.46 | 0.15 | 0.04 |
| Guadalupe #3 | 22.05 | 6.61 | 16.54 | 4.97 | 0.00 | 3.32 | 0.83 | 0.26 | 0.09 | 0.02 |
| Lompoc City #2 | 93.01 | 27.91 | 69.75 | 20.92 | 0.00 | 13.96 | 3.50 | 1.05 | 0.33 | 0.10 |
| Lompoc Valley #2 | 36.33 | 10.89 | 27.22 | 8.16 | 0.00 | 5.43 | 1.36 | 0.41 | 0.14 | 0.03 |
| Los Alamos #1 | 46.19 | 13.86 | 34.65 | 10.38 | 0.00 | 6.93 | 1.73 | 0.51 | 0.17 | 0.04 |
| Orcutt #3 | 27.68 | 8.31 | 20.76 | 6.23 | 0.00 | 4.16 | 1.04 | 0.31 | 0.11 | 0.03 |
| Santa Maria #3 | 88.55 | 26.57 | 66.42 | 19.98 | 0.00 | 13.28 | 3.33 | 1.00 | 0.31 | 0.10 |
| SMR Levee | 23.89 | 7.17 | 17.92 | 5.38 | 0.00 | 3.60 | 0.89 | 0.28 | 0.10 | 0.02 |
| Santa Ynez #1 | 20.40 | 6.13 | 15.30 | 4.59 | 0.00 | 3.05 | 0.76 | 0.23 | 0.09 | 0.02 |
| South Coast #2 | 155.44 | 46.64 | 116.58 | 34.97 | 0.00 | 23.32 | 5.83 | 1.75 | 0.58 | 0.17 |

Recommendations



- Approval of actions a, b, and c
- First Reading

- Return July 12, 2016 for
Second Reading and Final
Adoption (Admin Agenda) 4