

# Southern California Gas Company (SCG)

Advanced Meter and Pipeline Safety  
Wireless Telecommunications

Santa Barbara County Board of Supervisors  
Hearing – December 8th, 2020



# Safety is a Top Priority

- Safety is at the **heart** of everything SoCal Gas does.
- SoCal Gas, with an outstanding safety record for more than **140 years**, is taking advantage of new technologies like advanced metering to ensure the continued safe and reliable delivery of natural gas to its customers.
- Customer and **safety benefits** include quicker detection of higher-than-usual gas usage and improved monitoring of gas pressure throughout the gas system.
- **Environmental benefits** include removing 1,000 trucks off the road which is equivalent to reducing 140,000 tons of carbon emissions, or 6.3 million miles that won't be driven every year.

## SAFETY BENEFITS

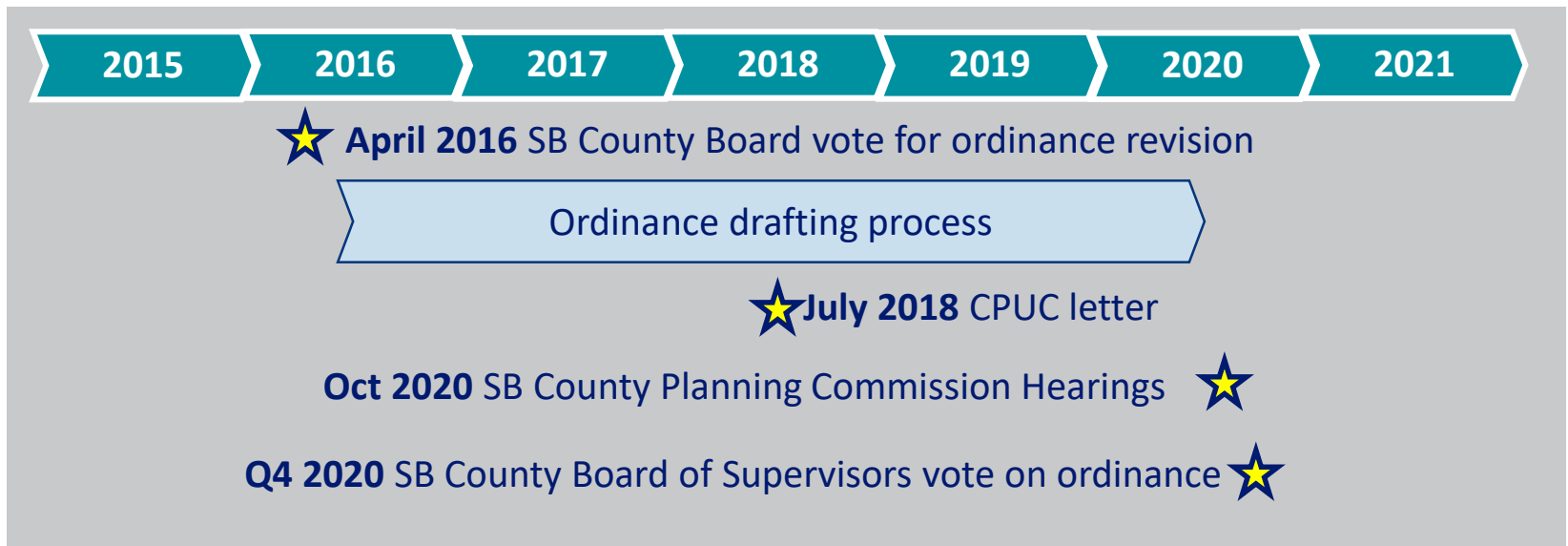
Detect abnormal gas usage in days rather than weeks

Help identify system-level issues or performance (i.e. wildfires, mudslides, etc.)

Reduce financial burden on customers, while saving energy and improving air quality

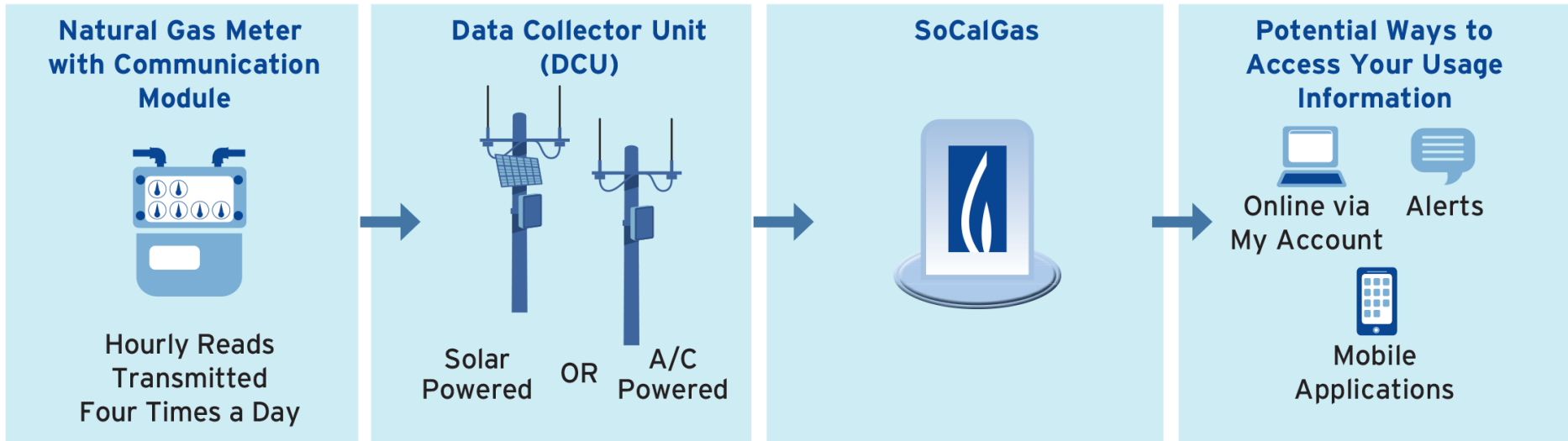
# Background and General Information

In April 2016, Santa Barbara Board of Supervisors directed County Staff to modify existing wireless telecommunications ordinance to enable SoCalGas (SCG) to install our wireless telecommunications equipment/infrastructure`



# Advanced Meter

## Advanced Meter: How Does it Work?



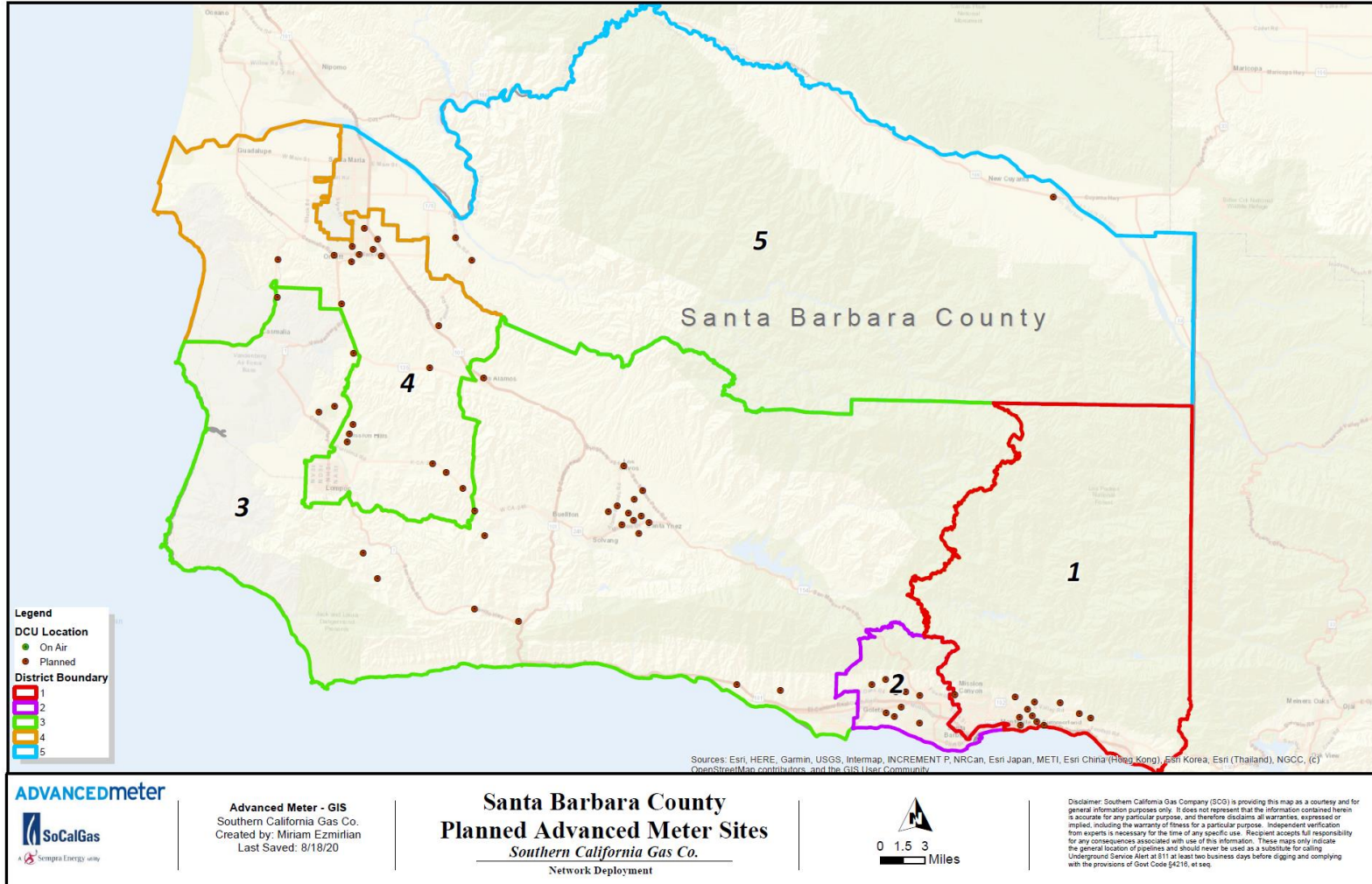
# Community Outreach Efforts

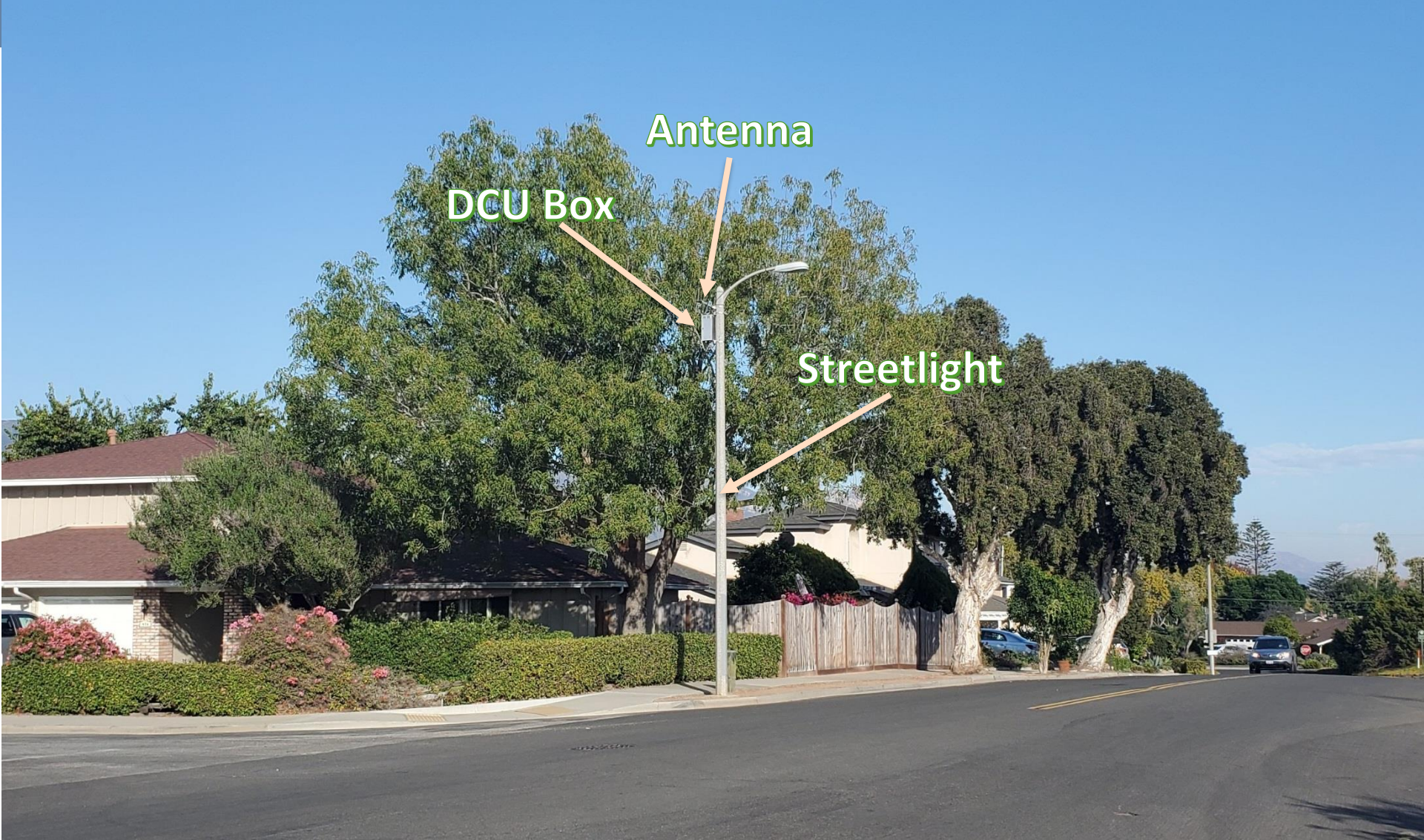
## Outreach efforts are a TOP PRIORITY

- » As part of our efforts to keep the communities informed, SCG presented to the four BARs in Nov/Dec 2019 and the Montecito Association in Jan 2020
  - As a result of a request through the Montecito Association, SCG has been engaged with Montecito Water District to explore feasibility of colocation options
  
- » SCG presented to both Santa Barbara County Planning Commission and Montecito Planning Commission
  - As a result of the Planning Commission Hearings, SCG received a 9-0 vote to approve (5-0 SB County, 4-0 Montecito)
  
- » Future outreach efforts include:
  - Will meet with all impacted stakeholders, as requested
  - We engage all customers within a 300' radius



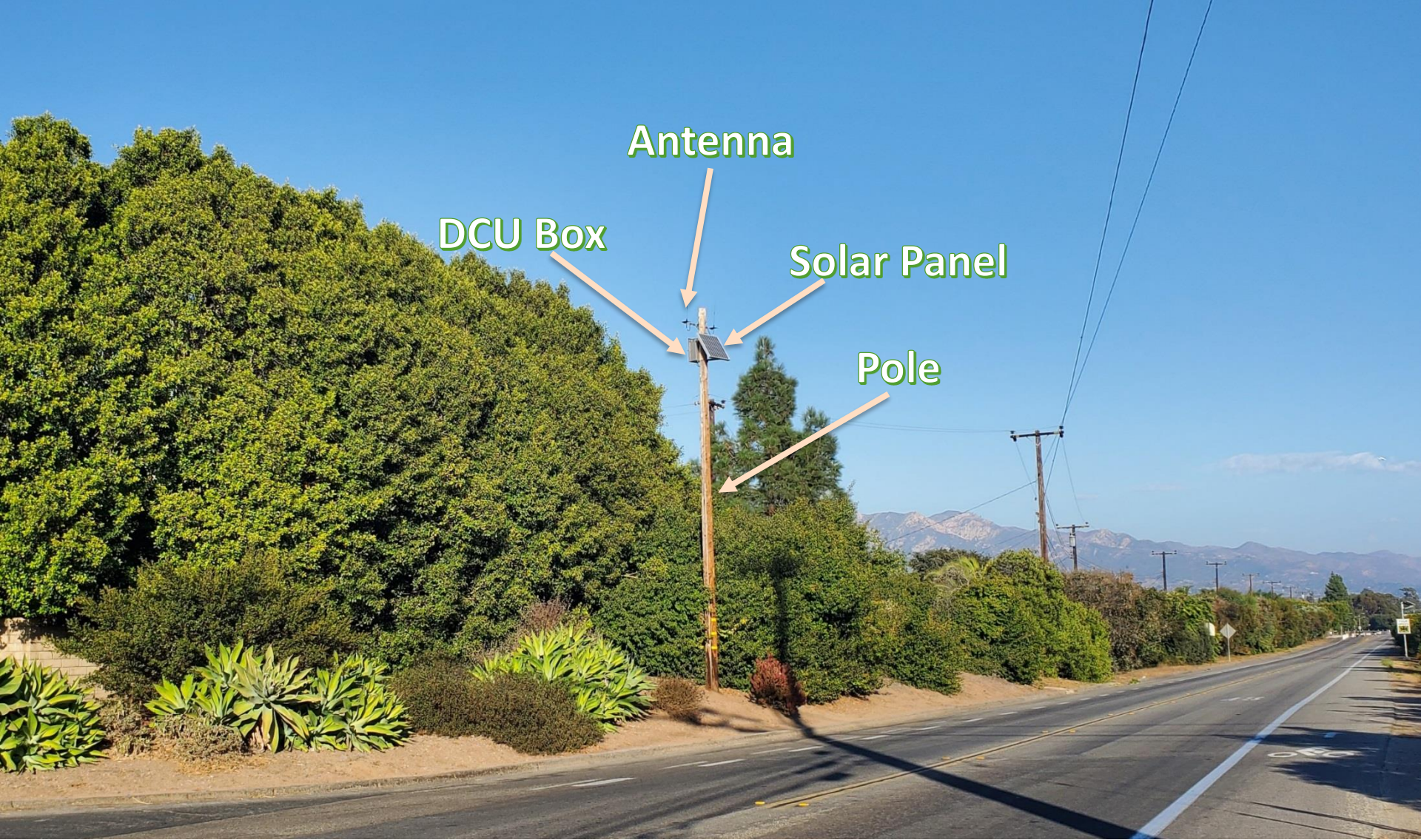
# County Map of Proposed Data Collector Units





## Colocation Example on Streetlight





## Standalone Example



# THANK YOU



A  Sempra Energy utility®