



Channel Islands

Marine & Wildlife

INSTITUTE





**Channel Islands Marine & Wildlife Institute
(CIMWI, “sim-wee”)**

**Dedicated to positively impacting conservation
through marine mammal rescue, rehabilitation,
research and education to promote
ocean and human health**

CIMWI is the only organization authorized to respond to and rehabilitate pinnipeds (seals and sea lions) and rescue and triage cetaceans (whales and dolphins) and sea turtles for Santa Barbara County



Channel Islands
Bakersfield

Marine & Wildlife INSTITUTE

San Luis Obispo / Santa Barbara
34°28'15"N 120°39'00"W

Santa Lucia
Bank

Santa Barbara County & Ventura County
153 miles of coastline, 94+ beaches, and 4 harbors

Santa Barbara

Ventura

Santa Clarita

CIMWI

34°28'26"N 120°11'58"W

Santa Barbara Channel

Channel
Islands

Santa Cruz Channel

Ventura / Los Angeles
34°04'45"N 118°94'06"W

Los Angeles

Pacific Ocean

Santa Cruz
Basin

San Pedro Channel

California

Arguello
Terrace

Rodriguez Seamount

0 25 50 km

CIMWI's Santa Barbara Jurisdiction



110 Miles of Coastline

Over 38 Beaches

1 Harbor

Rescue



DO NOT DISTURB



NORTHERN ELEPHANT SEAL PUP

This animal is being monitored by
Channel Islands Marine & Wildlife Institute (CIMWI)

- Elephant seal pups are nursed for about a month. Then they are weaned and left on their own (referred to as "weaners").
- After being weaned, pups go through a "catastrophic" molt. They shed their initial black coat and outer layer of skin for their adolescent sleek silver-gray coat.
- Elephant seal pups do not eat while they go through the molting process. They live on stored fat from their mother's milk. During the molting process, pups lose about half their body weight.
- Weaners are not very active. Normal pup activity includes sleeping, stretching, scratching and flipping sand on their back.
- Pups are born December through February.

CIMWI RESCUE HOTLINE (805) 567-1505

Channel Islands
Marine & Wildlife
INSTITUTE

www.CIMWI.org

WARNING!

Do Not Feed or Disturb Marine Mammals

IT IS ILLEGAL!

Marine mammals are protected under the federal Marine Mammal Protection Act.
Violations of this Act may result in fines of up to \$10,000 for each incident.



DO NOT:

- Touch
- Feed
- Harass
- Cover
- Pour water on
- Allow dogs near
- Coax into the water

REMEMBER:

- Observe the animal from a minimum distance of 50 feet for human and animal safety.
- This is a wild animal and it may bite.
- Marine mammals may carry diseases harmful to humans and pets.
- It is normal for seals and sea lions to come out of the water to rest.
- Call Channel Islands Marine & Wildlife Institute (CIMWI) to report a marine mammal in distress:

CIMWI RESCUE HOTLINE (805) 567-1505

Channel Islands
Marine & Wildlife
INSTITUTE

www.CIMWI.org





SANTA BARBARA
HARBOR PATROL
CREW



OCEAN



OCEAN



KAYAK



Out of Habitat







Sea Landing

**JET SKI
JET BOAT
& KAYAK
RENTALS**

SEA 200



Human Interaction & Entanglement



3

HARBOR PATROL

HARBOR PATROL









Rehabilitation















ANNOTATION 114%

Img: 9/9
 Anatomy: THORAX
 View: UNKNOWN
 Laterality: UNKNOWN

Santa Barbara Zoo
 Vet Rec :Sam Dover
 CIMWI-SB-16-263-ZC-254 CIMWI
 OTHER
 Age: 3. years Sex: M
 Acq Dt: 06/13/2016
 Acq Tm: 13:33:24.0



-
-
-
-
-
-
-
-
-

DX

Still 9

Release







Research





STOOL
SAMPLES

IGLOO

Channel Islands
Marine &
INST

R



Education & Outreach

- April
- 5 May
- 6 June
- 7 July
- 8 August
- 9 September
- 10 October
- 11 November
- 12 December

the
you
I
we
up
said
get

Sunday	Monday	Tuesday	Wednesday	Thursday	Friday	Saturday
Sun.	Mon.	Tues.	Wed.	Thurs.	Fri.	Sat.

Work Station



GOALS

Weather

Marine Mamm



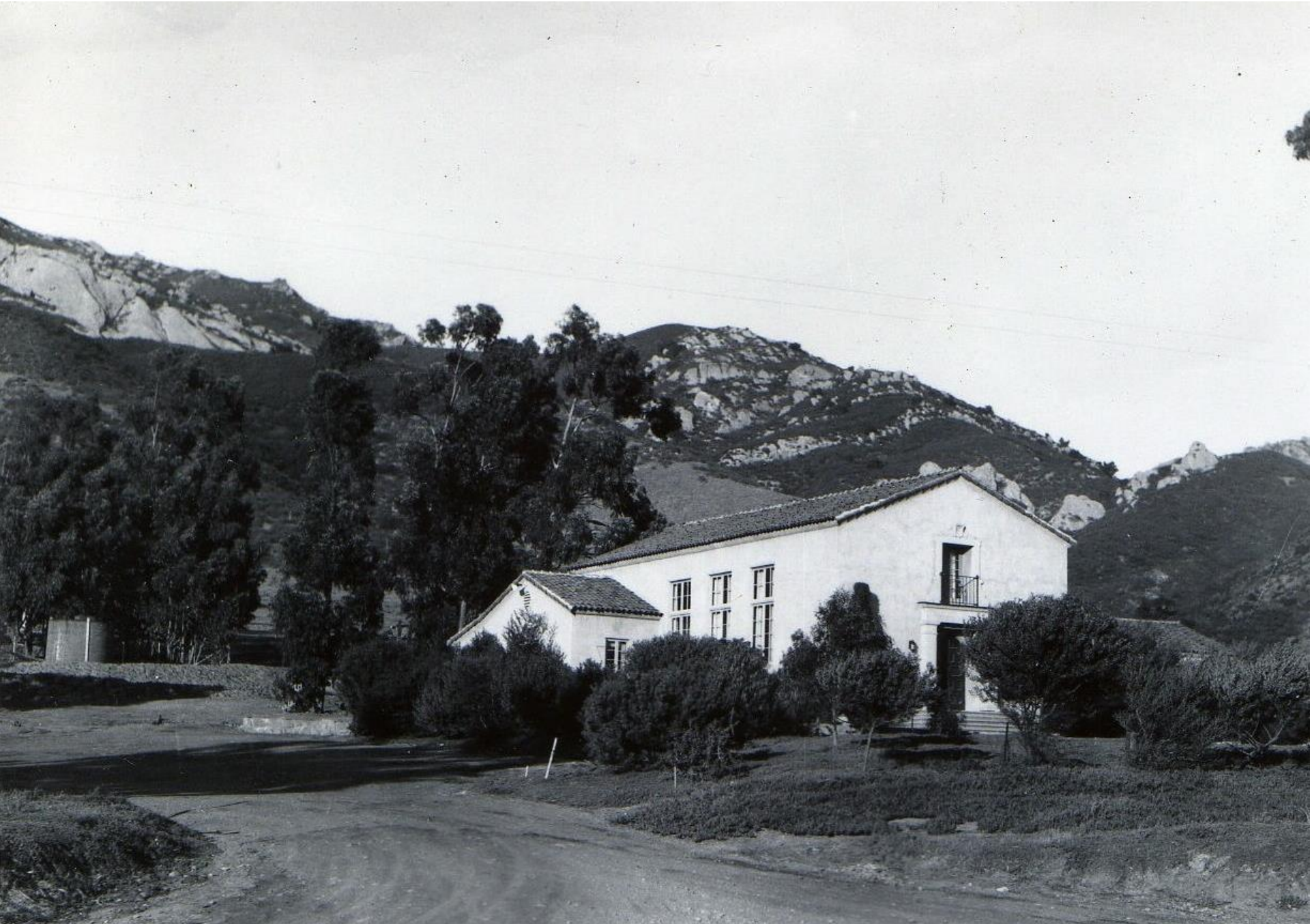


Rescue



SANTA BARBARA
COUNTY

Facility



VISTA DEL MAR SCHOOL GAVIOTA



VISTA DEL MAR
UNION SCHOOL



Alexander
Chevrolet GMC

Rescue Hotline
(805) 567-1505

Alexander of Onard
(805) 988-2200

www.CIMWL.org

Marine Mammal Rescue

Channel Islands
Marine & Wildlife
INSTITUTE



REMINDERS:

- [illegible]
- [illegible]
- [illegible]
- [illegible]
- [illegible]

PLEASE DO NOT
[illegible]

4

3

2

Volunteers







How to help a stranded marine mammal:

1. Do Not Touch!

Do not touch, feed, harass, cover, pour water on, allow dogs near or coax animal back into the water.

1. Observe Animal

Observe animal from a distance of 50 feet. Note physical characteristics and condition.

2. Determine Location

Determine exact location of animal and note any landmarks.

3. Call Hotline

Call CIMWI's Rescue Hotline and provide name, phone number and specific information about animal and its location.

Rescue Hotline (805) 567 - 1505

CREF Grant will help CIMWI serve Santa Barbara County community



CREF Grant will bring #32 to life!





#32

Thank you for your consideration!





Channel Islands
Marine & Wildlife
INSTITUTE



**Giving marine mammals a
second chance at life!**