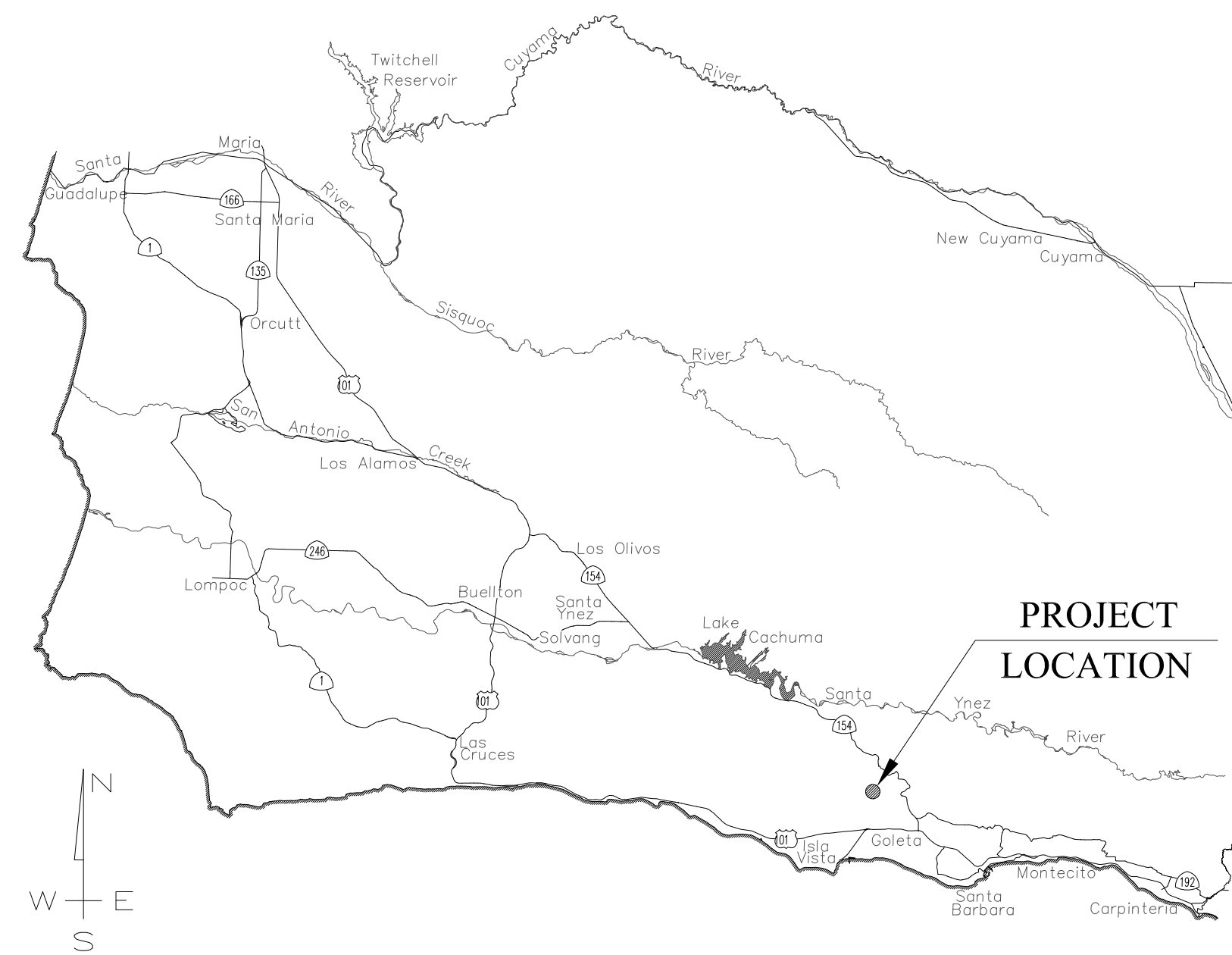


# SANTA BARBARA COUNTY FLOOD CONTROL AND WATER CONSERVATION DISTRICT

## MARIA YGNACIO CREEK MAIN BRANCH FUTURE POST-FIRE MITIGATION DEBRIS RACK

### IN THE GOLETA AREA OF SANTA BARBARA COUNTY, CALIFORNIA



**VICINITY MAP**  
No Scale

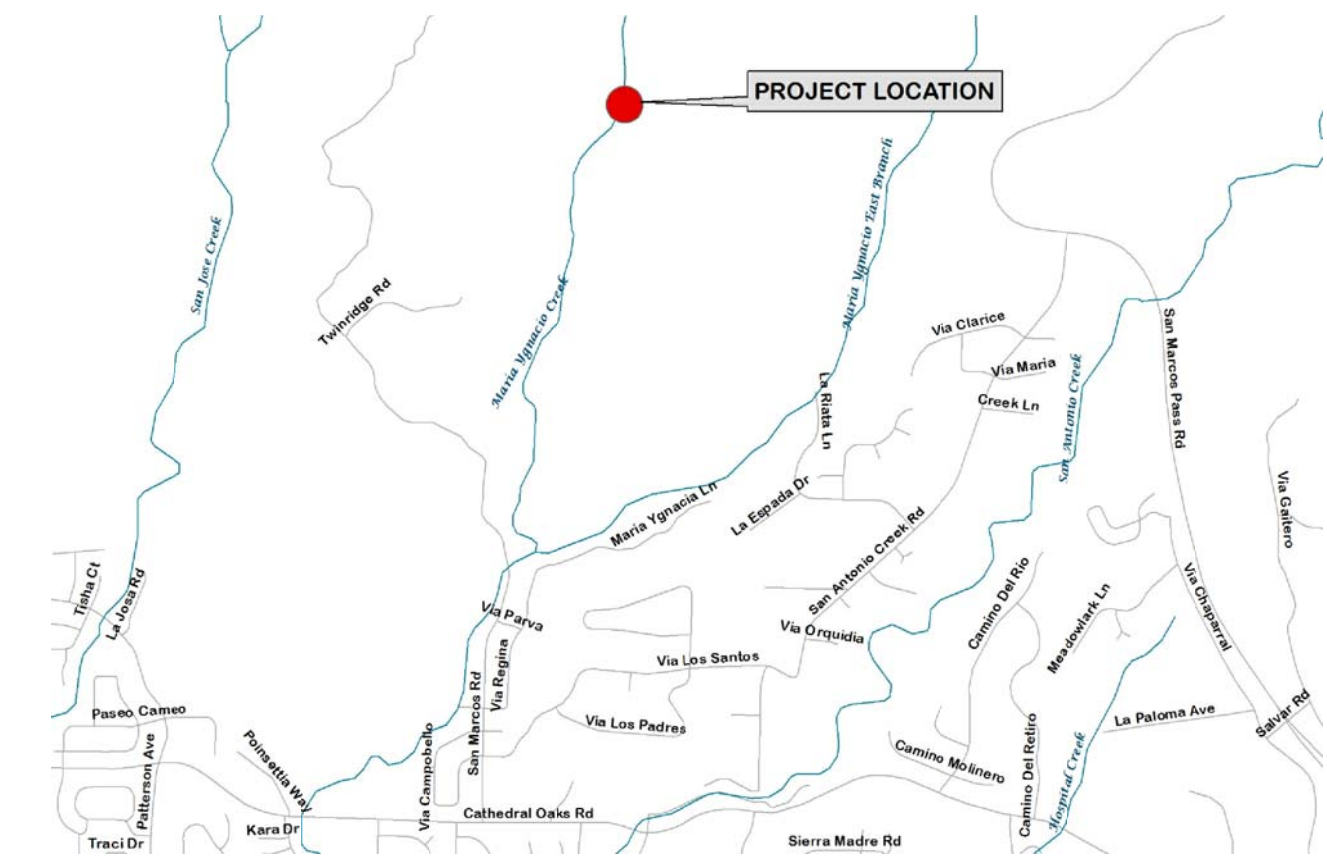
#### DISTRICT BOARD OF DIRECTORS

FIRST DISTRICT	Das Williams
SECOND DISTRICT	Gregg Hart
THIRD DISTRICT	Joan Hartmann
FOURTH DISTRICT	Peter Adam
FIFTH DISTRICT, CHAIR	Steve Lavagnino

CHAIR, BOARD OF DIRECTORS \_\_\_\_\_  
Steve Lavagnino

#### INDEX TO SHEETS

DESCRIPTION	SHEET NO.
TITLE SHEET	1
GENERAL INFORMATION	2
PLAN AND SECTION VIEWS	3
DETAILS	4



**SITE MAP**  
No Scale



ALL UNDERGROUND UTILITIES SHOWN ARE PLOTTED BASED ON INFORMATION PROVIDED BY OTHERS, AND ARE APPROXIMATE. OVERHEAD UTILITIES ARE NOT SHOWN.

UNAUTHORIZED CHANGES OR USES: THE SANTA BARBARA COUNTY FLOOD CONTROL & WATER CONSERVATION DISTRICT AND ITS EMPLOYEES WILL NOT BE RESPONSIBLE FOR, OR LIABLE FOR, UNAUTHORIZED CHANGES TO OR USES OF THESE PLANS. ALL PROPOSED CHANGES TO THE PLANS MUST BE PRESENTED IN WRITING TO THE DISTRICT AND APPROVED IN WRITING BY THE DISTRICT PRIOR TO IMPLEMENTATION OF ANY SUCH CHANGE OR USE.

THE SANTA BARBARA COUNTY FLOOD CONTROL DISTRICT IS NOT RESPONSIBLE FOR THE ACCURACY OF THIS INFORMATION. CONTRACTOR SHALL NOTIFY UNDERGROUND SERVICE ALERT A MINIMUM OF TWO WORKING DAYS PRIOR TO COMMENCEMENT OF ANY EXCAVATION @ 1-800-422-4133.

REVISIONS				DESIGNED BY: FLOOD CONTROL DESIGN ENGINEER DATE	REVIEWED BY: FLOOD CONTROL MAINTENANCE MANAGER DATE	SANTA BARBARA COUNTY FLOOD CONTROL AND WATER CONSERVATION DISTRICT 130 E. VICTORIA STREET SANTA BARBARA, CA 93101 (805) 568-3440		MARIA YGNACIO CREEK MAIN BRANCH FUTURE POST-FIRE MITIGATION DEBRIS RACK SANTA BARBARA COUNTY, CALIFORNIA	DESIGNED BY: TS/KS DRAWN BY: SB/KS CHECKED BY: JF	TITLE SHEET  SHEET 1 OF 4 Filename: MARIA YGNACIO RACK.DWG
NO.	DESCRIPTION	DATE	APR							





**SYMBOL LEGEND**

CONTROL POINT		EX. ROCK		EX. WATER METER	
EX. CABLE TV BOX		EX. SEWER CLEANOUT		EX. WATER SPIGOT	
EX. CABLE TV VAULT		EX. SEWER MANHOLE		EX. WATER VALVE	
EX. ELECTRIC BOX		EX. SIGNAGE		EX. WATER WELL	
EX. ELECTRIC GUY WIRE		EX. STORM DRAIN GRATE		EX. CONCRETE	
EX. ELECTRIC MANHOLE		EX. STORM DRAIN MANHOLE		EX. GROUTED RSP (GRSP)	
EX. ELECTRIC METER		EX. STRUCTURE BENCH		EX. RSP	
EX. FIRE HYDRANT		EX. STRUCTURE BOLLARD/POST		BROKEN UP GROUTED RSP	
EX. GAS METER		EX. TELEPHONE BOX		RSP	
EX. GAS VALVE		EX. TELEPHONE MANHOLE		EXCAVATION	
EX. IRRIGATION SPRINKLER		EX. TELEPHONE POLE		FILL	
EX. LUMINARY		EX. TELEPHONE VAULT		CUT/FILL SLOPE	
EX. MAILBOX		EX. TREE			
EX. MONUMENT		EX. TREE CANOPY			
EX. POWER & TELEPHONE POLE					

**LINETYPE LEGEND**

BOUNDARY EASEMENT LINE	
BOUNDARY RIGHT OF WAY LINE	
BOUNDARY PROPERTY LINE	
CENTERLINE	
CONTOUR LINE-MAJOR	
CONTOUR LINE-MINOR	
EX. AC EDGE OF PAVEMENT	
EX. BARBED WIRE FENCE	
EX. BRUSH	
EX. BUILDING	
EX. CABLE TV	
EX. CHAINLINK FENCE	
EX. DRAINAGE	
EX. ELECTRIC OVERHEAD	
EX. STORM DRAIN	
EX. WATER	

**ABBREVIATIONS**

APN	ASSESSORS PARCEL NUMBER
CL or C/L	CENTER LINE
CALTRANS	STATE OF CALIFORNIA DEPARTMENT OF TRANSPORTATION
COUNTY	COUNTY OF SANTA BARBARA
CP	CONTROL POINT
E	EAST OR EASTING
EG	EXISTING GROUND
EP	EDGE OF PAVEMENT
ELEC	ELECTRIC
EX	EXISTING
FG	FINISH GRADE
FT	FEET
G	GAS LINE
GB	GRADE BREAK
IN	INCH
N	NORTH OR NORTING
PK	PK NAIL
R1	RECORD PER BOOK NN PAGE NN OF MAPS
S	SEWER OR SLOPE OR SOUTH
SH	SHINER
SPK	SPIKE
TOB	TOP OF BANK
TOE	TOE OF BANK
TBM	TEMPORARY BENCHMARK
W or WL	WATER LINE
WV	WATER VALVE

**EXISTING UTILITY INFORMATION**

ALL UNDERGROUND UTILITIES SHOWN ARE PLOTTED BASED ON INFORMATION PROVIDED BY OTHERS, AND ARE APPROXIMATE. OVERHEAD UTILITIES ARE NOT SHOWN. NOTE THAT INDIVIDUAL SERVICE LATERALS AND CONNECTIONS ARE NOT PLOTTED ON THE PROFILE.

THE SANTA BARBARA COUNTY FLOOD CONTROL DISTRICT IS NOT RESPONSIBLE FOR THE ACCURACY OF THIS INFORMATION. CONTRACTOR SHALL NOTIFY UNDERGROUND SERVICE ALERT A MINIMUM OF TWO WORKING DAYS PRIOR TO COMMENCEMENT OF ANY EXCAVATION @ 1-800-422-4133.

ALL UNDERGROUND UTILITIES SHOWN ARE PLOTTED BASED ON INFORMATION PROVIDED BY OTHERS, AND ARE APPROXIMATE. OVERHEAD UTILITIES ARE NOT SHOWN.

THE SANTA BARBARA COUNTY FLOOD CONTROL DISTRICT IS NOT RESPONSIBLE FOR THE ACCURACY OF THIS INFORMATION. CONTRACTOR SHALL NOTIFY UNDERGROUND SERVICE ALERT A MINIMUM OF TWO WORKING DAYS PRIOR TO COMMENCEMENT OF ANY EXCAVATION @ 1-800-422-4133.

REVISIONS			
NO.	DESCRIPTION	DATE	APR



DESIGNED BY:  
**KM Sullivan** 10/15/2019  
FLOOD CONTROL DESIGN ENGINEER DATE

CONTROL POINT TABLE					
CONTROL POINT#	NORTHING	EASTING	ELEVATION	DESCRIPTION	RECORD
CP2	1999245.43	6021590.07	291.466	FOUND 1/2" PIPE AND MAG NAIL TOP WEST BERM	MARIA_YGNACIA_2018-11-20
CP10	1999729.73	6021791.12	290.981	FOUND SPIKE AND CHASER IN ROCK	MARIA_YGNACIA_2018-11-20
CP30	1999072.64	6021392.11	268.965	FOUND SPIKE AND CHASER IN DIRT	MARIA_YGNACIA_2018-11-20
CP33	1999071.66	6021536.49	268.61	SET SPIKE AND CHASER IN ROAD	MARIA_YGNACIA_2019-10-01
CP34	1999156.59	6021675.87	291.57	SET SPIKE AND CHASER	MARIA_YGNACIA_2019-10-01
CP35	1999093.88	6021545.18	271.025	SET SPIKE AND CHASER TOP EAST BERM	MARIA_YGNACIA_2019-10-01

**Surveyor's Notes:**

Horizontal positions were derived from GPS-RTK observation holding base station at CP10 fixed as shown as CP10 on County Flood Control Project SC8349\_MARIA YGNACIA & O-1127 07-18-2017. based on California Coordinate System 1983 (CCS83) 1991.35 epoch.

Elevations (orthometric heights) were derived by GPS-RTK observation and converted to the North American Vertical Datum 1988 (NAVD88) using the National Geodetic Survey's program GEOD99 holding base station at CP5 fixed as shown as CP1 on County Surveyors Office NOAA Radar Target Control Project C004. based on California Coordinate System 1983 (CCS83) 1991.35 epoch.

All coordinate values shown are grid values. All distances are based on the U.S. Survey Foot (one survey foot = 1200/3937 meters).

**Contour Interval:**

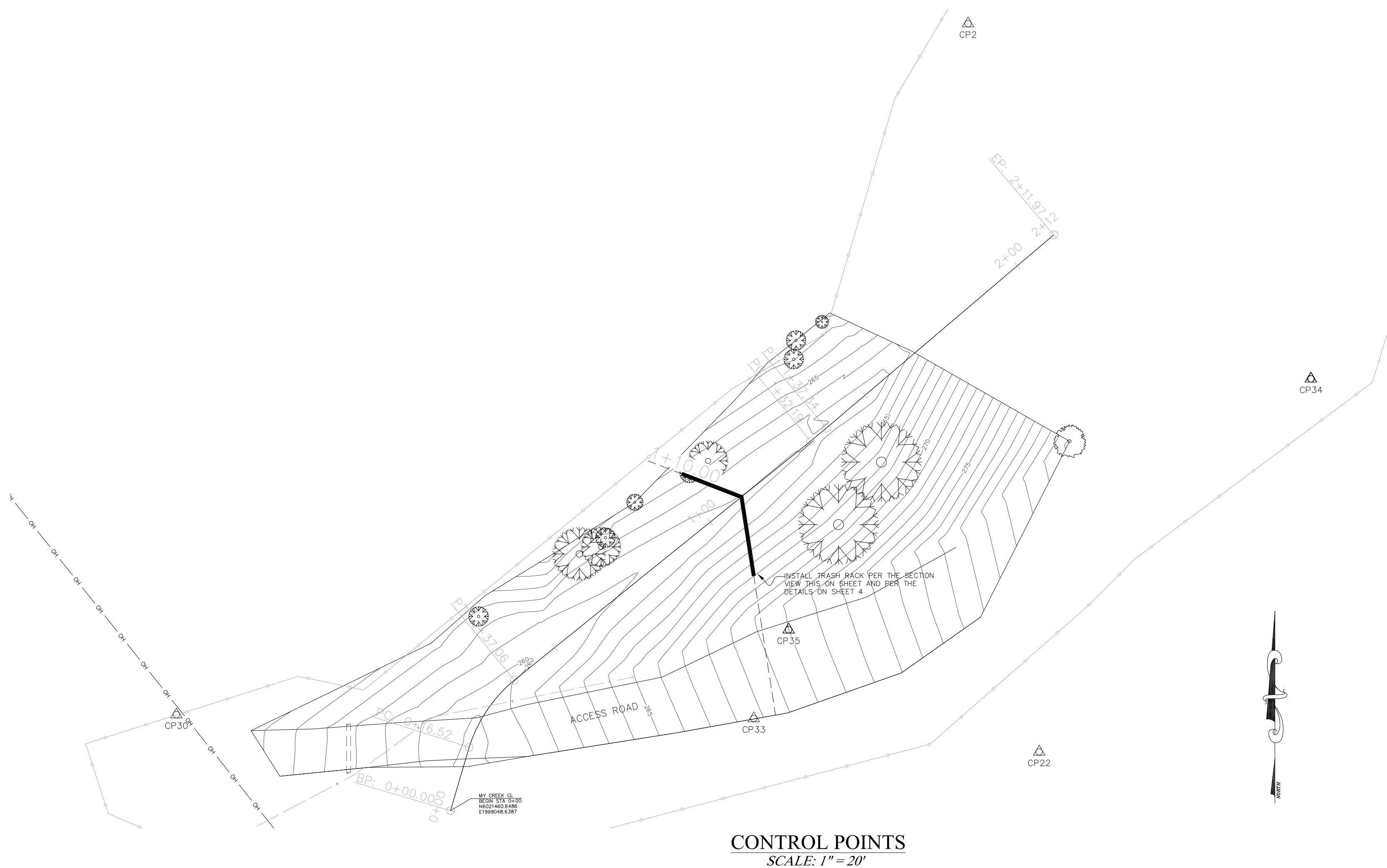
The contour interval is shown at 1 foot intervals with majors at every 5 feet

**Basis of Bearings:**

The Basis of Bearings for this topo for construction of debris rack is between CP33 and CP2 calculated as N 17°08'14" E, 181.85' and measured as N 17°08'17" E, 182.03'.

Control originates from preconstruction topo of basin modification dam removal basis of bearings is CP10-CP2. These are the remaining control points within basin. The Basis of Bearings is between CP10 and CP2 calculated as S 22°32'40" W, 524.412' and measured as S 22°33'02" E, 524.541'. Measured from base at CP10 rover on CP2 check shot values horizontal 0.141' and vertical +0.568'.

CP31 was set by RTK with poor GPS signal. CP33 was established by resection of CP31-CP2. CP31 was then reshot as CP35 holding CP33 with backsight on CP2 with repetition shots method. Resulting topo was shot from CP33 backsight CP2.



**CONTROL POINTS**  
SCALE: 1" = 20'

SANTA BARBARA COUNTY  
FLOOD CONTROL AND  
WATER CONSERVATION DISTRICT  
130 E. VICTORIA STREET  
SANTA BARBARA, CA 93101  
(805) 568-3440

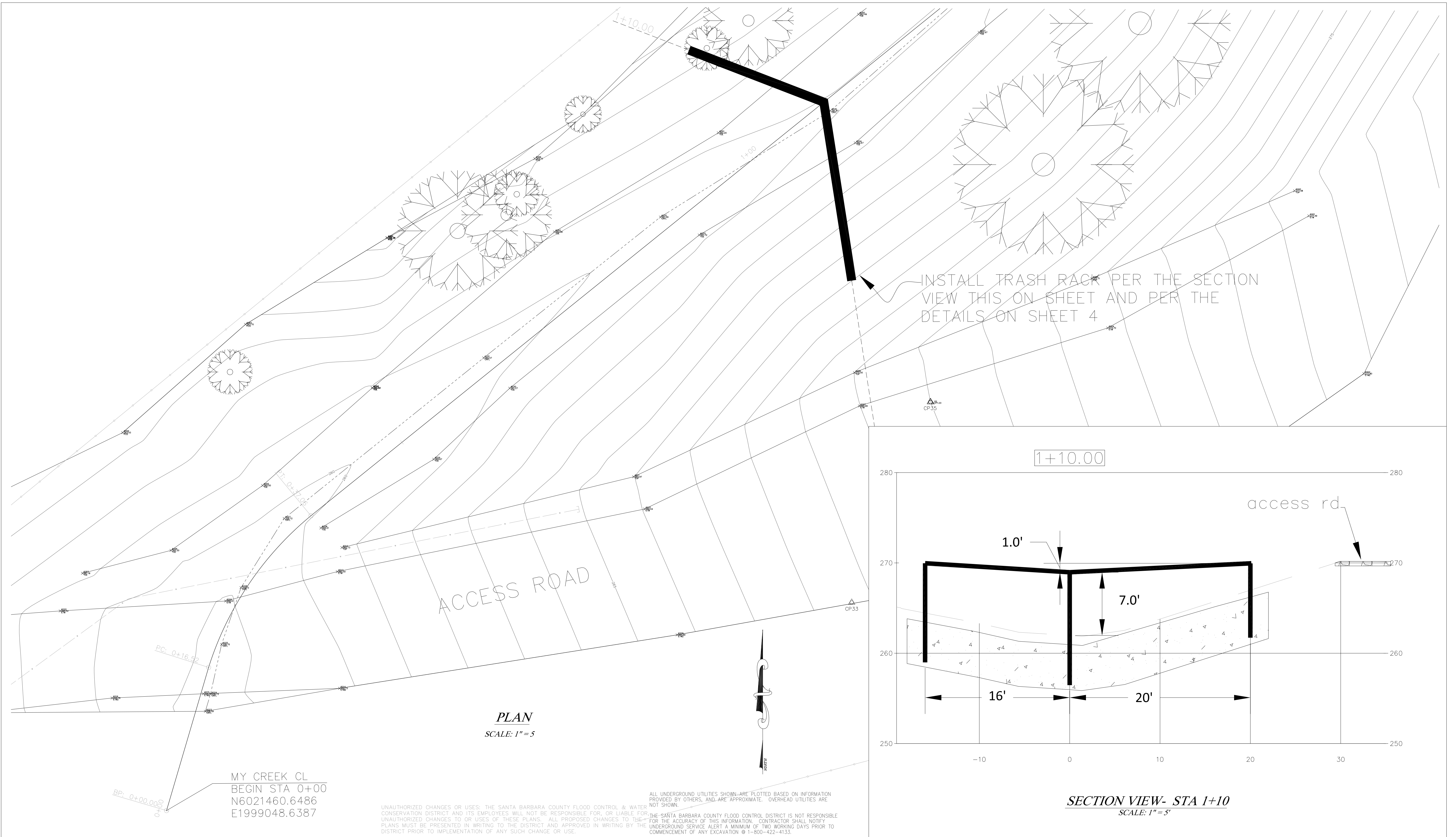


MARIA YGNACIO CREEK  
MAIN BRANCH  
FUTURE POST-FIRE MITIGATION  
DEBRIS RACK  
SANTA BARBARA COUNTY, CALIFORNIA

**GENERAL INFORMATION**

DRAWN BY:	RT/KS
DRAWN BY:	SB/KS
CHECKED BY:	JF
SHEET 2 OF 4	
Filename: MARIA_YGNACIO_RACK.DWG	





**PLAN**  
SCALE: 1" = 5'

**SECTION VIEW- STA 1+10**  
SCALE: 1" = 5'

MY CREEK CL  
BEGIN STA 0+00  
N6021460.6486  
E1999048.6387

ALL UNDERGROUND UTILITIES SHOWN ARE PLOTTED BASED ON INFORMATION PROVIDED BY OTHERS, AND ARE APPROXIMATE. OVERHEAD UTILITIES ARE NOT SHOWN.  
UNAUTHORIZED CHANGES OR USES: THE SANTA BARBARA COUNTY FLOOD CONTROL & WATER CONSERVATION DISTRICT AND ITS EMPLOYEES WILL NOT BE RESPONSIBLE FOR, OR LIABLE FOR, THE SANTA BARBARA COUNTY FLOOD CONTROL DISTRICT IS NOT RESPONSIBLE FOR THE ACCURACY OF THIS INFORMATION. CONTRACTOR SHALL NOTIFY PLANS MUST BE PRESENTED IN WRITING TO THE DISTRICT AND APPROVED IN WRITING BY THE DISTRICT PRIOR TO IMPLEMENTATION OF ANY SUCH CHANGE OR USE. COMMENCEMENT OF ANY EXCAVATION @ 1-800-422-4133.

NO.	REVISIONS DESCRIPTION	DATE	APR



DESIGNED BY:  
*KM Sullivan* 10/15/2019  
FLOOD CONTROL DESIGN ENGINEER DATE

SANTA BARBARA COUNTY  
FLOOD CONTROL AND  
WATER CONSERVATION DISTRICT  
130 E. VICTORIA STREET  
SANTA BARBARA, CA 93101  
(805) 568-3440



MARIA YGNACIO CREEK  
MAIN BRANCH  
FUTURE POST-FIRE MITIGATION  
DEBRIS RACK  
SANTA BARBARA COUNTY, CALIFORNIA

**PLAN & SECTION**

DESIGNED BY: RT/KS	SHEET 3 OF 4
DRAWN BY: SB/KS	
CHECKED BY: JF	Filename: MARIA YGNACIO RACK.DWG

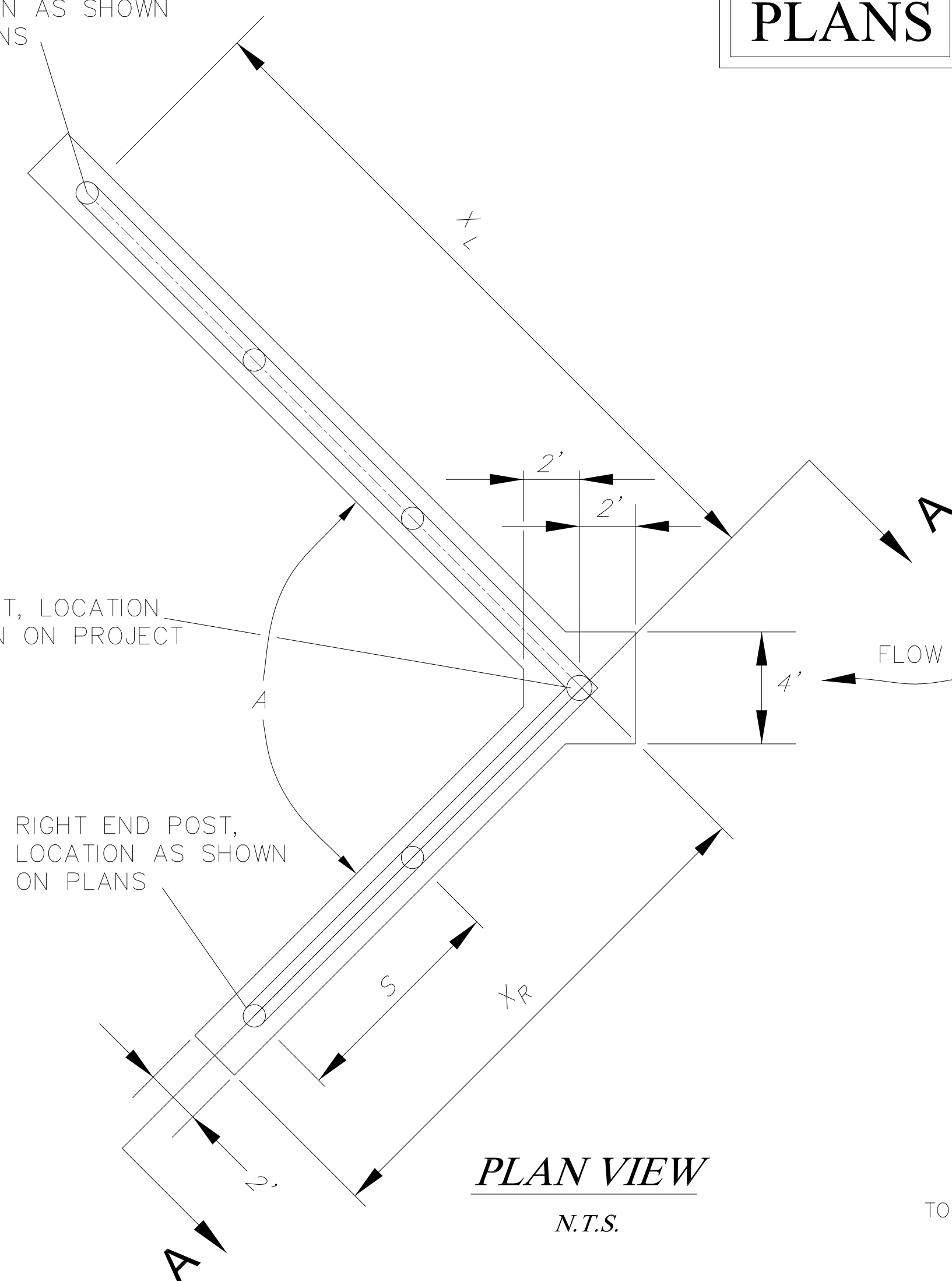


**HALF SCALE PLANS**

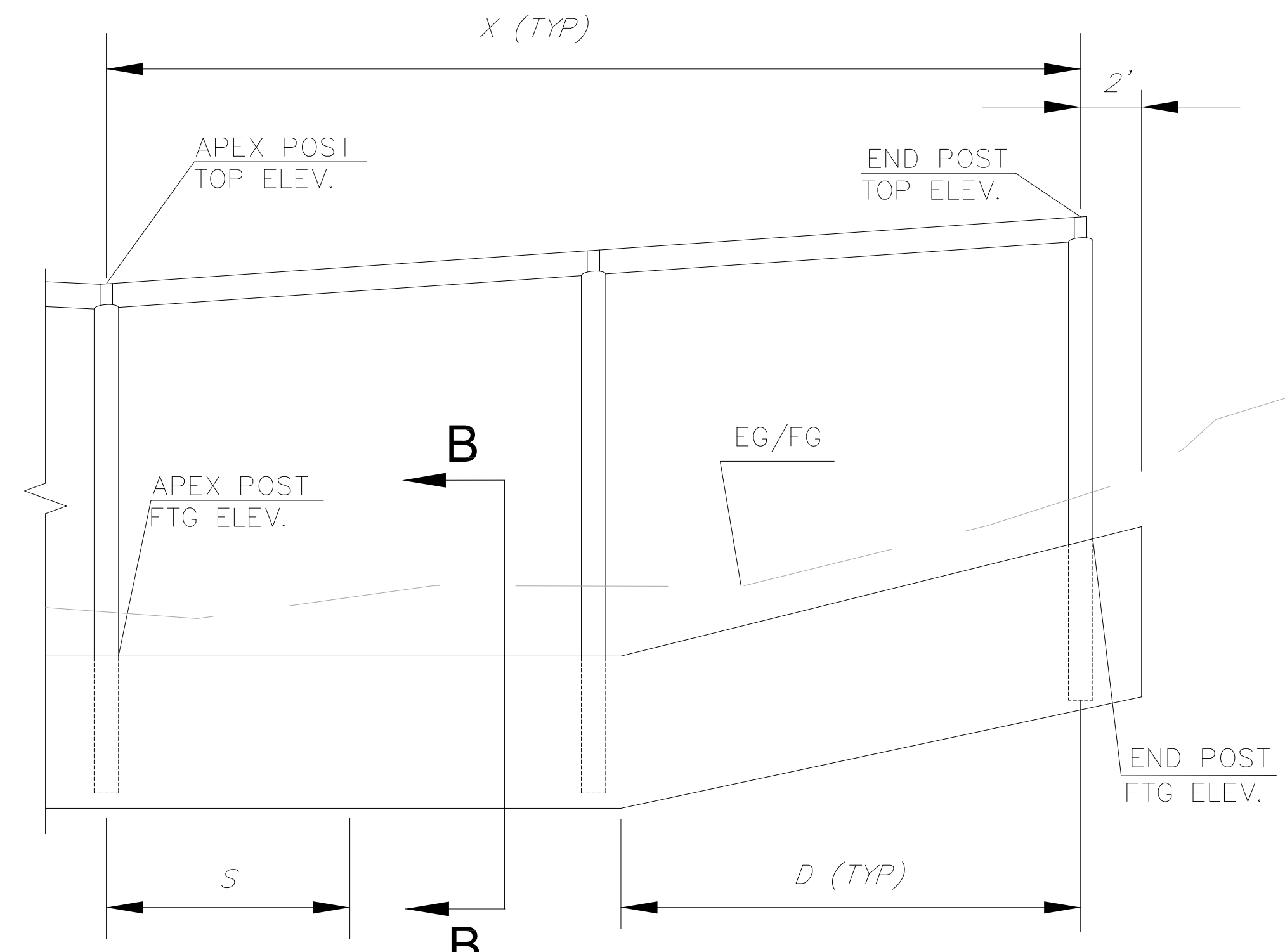
LEFT END POST, LOCATION AS SHOWN ON PLANS

APEX POST, LOCATION AS SHOWN ON PROJECT PLANS

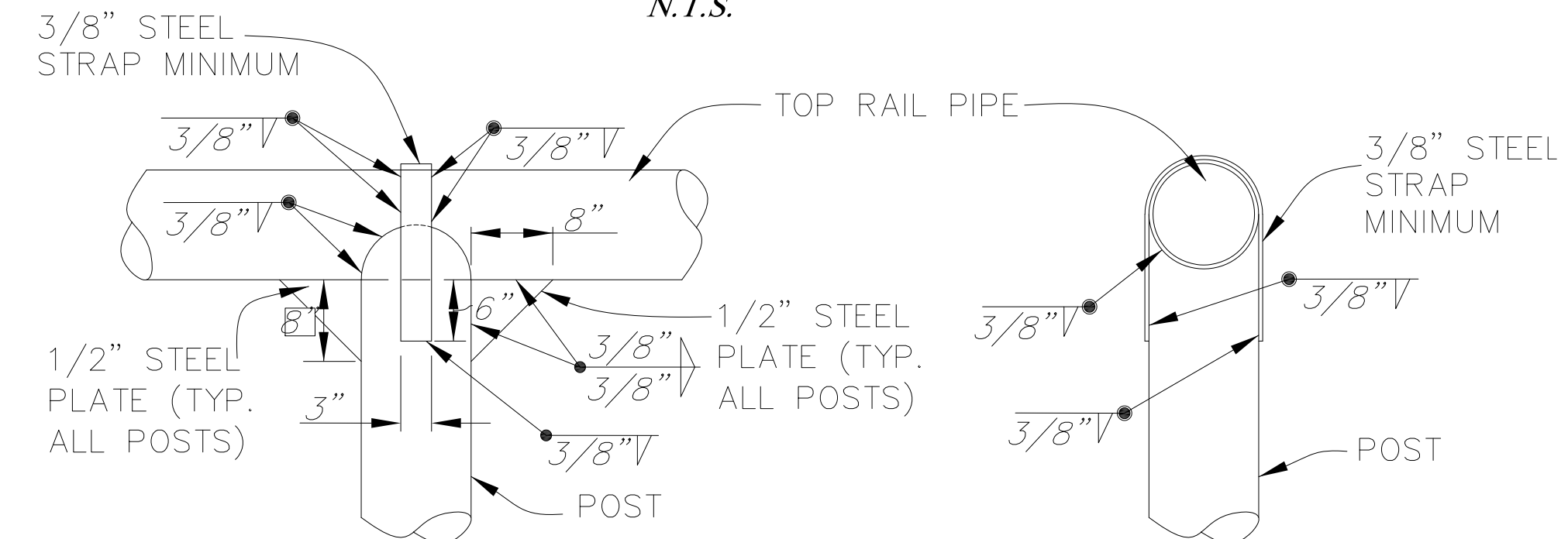
RIGHT END POST, LOCATION AS SHOWN ON PLANS



**PLAN VIEW**  
N.T.S.



**SECTION A-A**  
N.T.S.



**DEBRIS RACK SADDLE AND STRAP DETAIL**  
N.T.S.

**Notes**

Values for A,  $X_L$ ,  $X_R$ ,  $D_L$ , D, S, Apex FTG Elev, Apex Top Elev, End Post FTG Elev and End Post Top Elev are shown below.

Footing Concrete shall consist of slurry cement backfill with not less than 282 pounds of cement per cubic yard of material produced.

Steel Pipe and straps shall conform to the requirements of ASTM A36.

Mechanical Reinforcement sleeves shall be used when needed and shall conform to the requirements of ASTM A285.

Pipe that is cut shall be cut to clean, regular lines and approved by the engineer prior to welding.

Straps shall be shaped to match contours of the top pipe and post pipe prior to welding.

Apex Post Top Elev - Apex Post FTG Elev = 8'

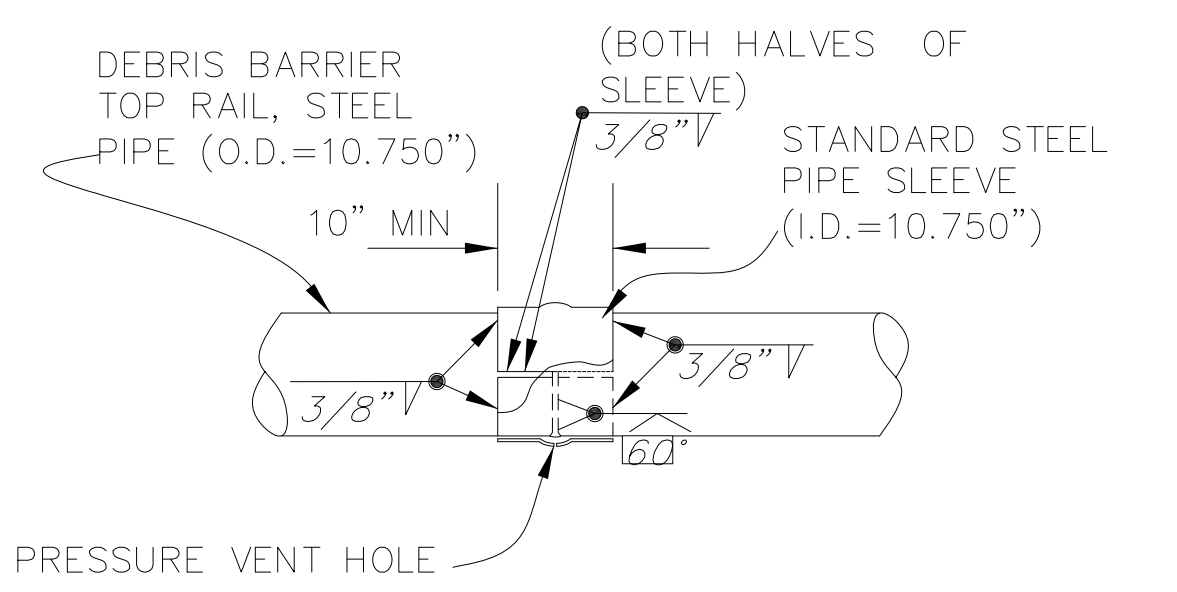
Apex Post Top Elev - End Post Top Elev = 2'

$X_L = 24'$   $H_L = 6'$

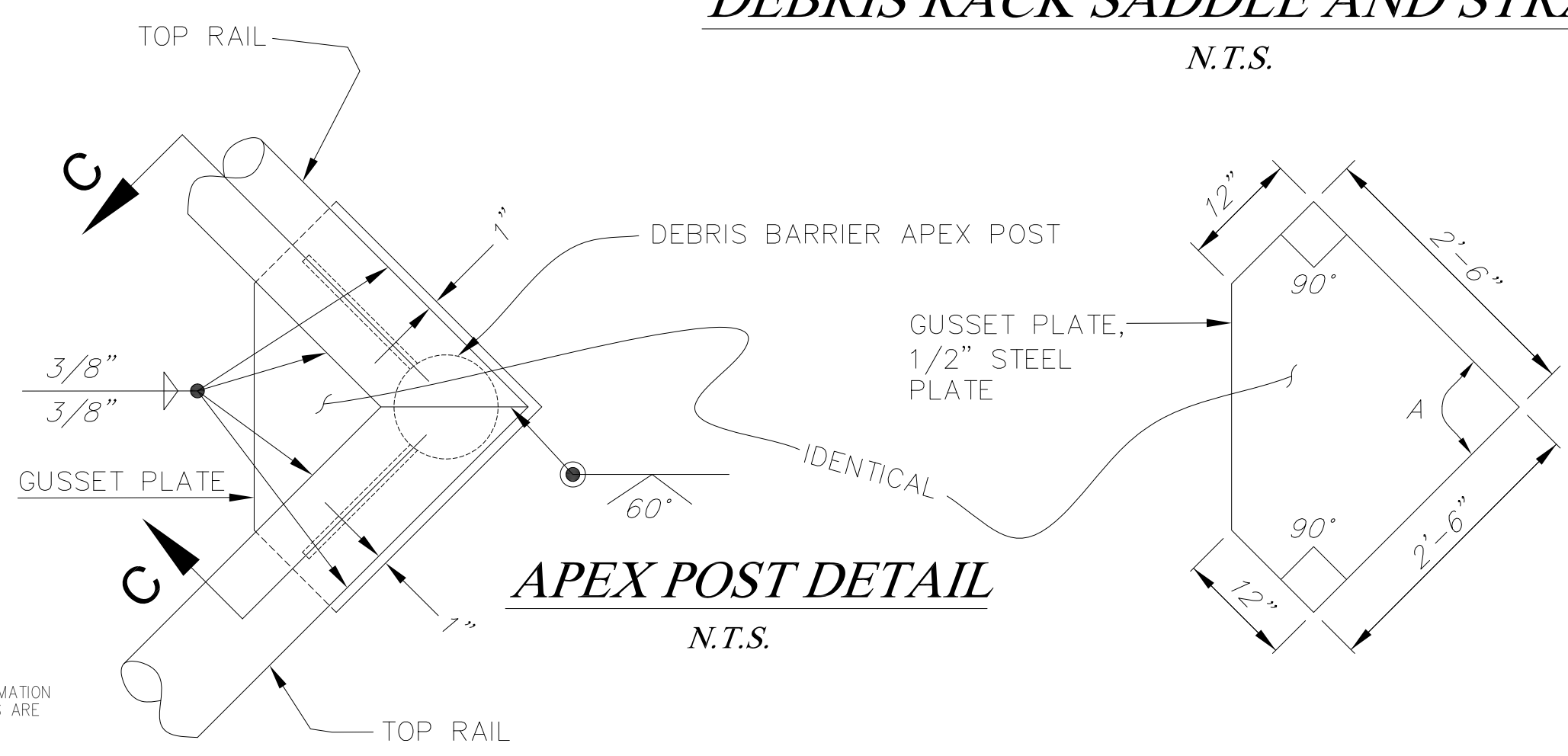
$X_R = 16'$   $H_R = 8'$

$D_L = 15'$   $S = 8'$

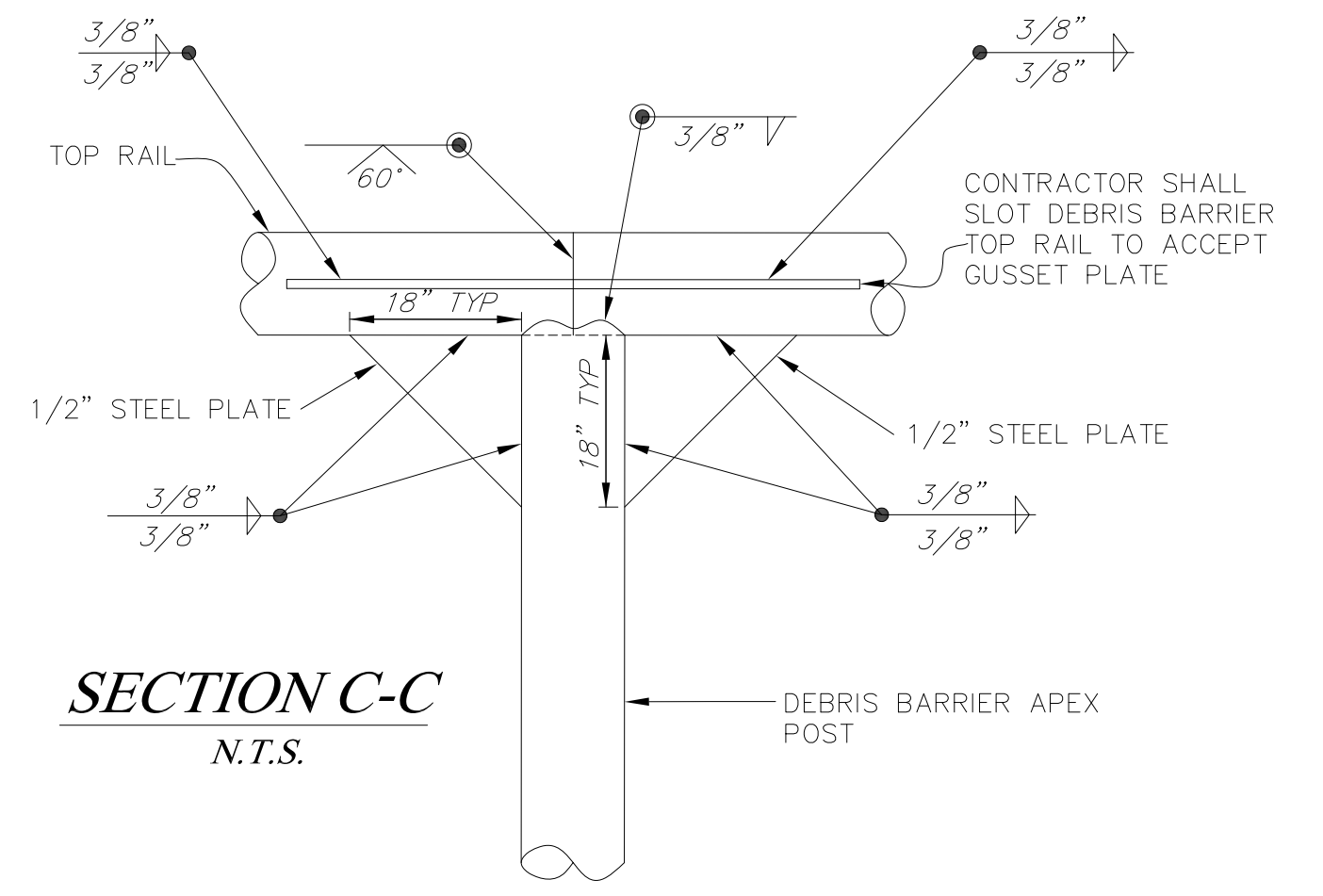
$D_R = 7'$   $A = 120'$



**MECHANICAL REINFORCEMENT PIPE SLEEVE DETAIL**  
N.T.S.



**APEX POST DETAIL**  
N.T.S.



**SECTION C-C**  
N.T.S.

ALL UNDERGROUND UTILITIES SHOWN ARE PLOTTED BASED ON INFORMATION PROVIDED BY OTHERS, AND ARE APPROXIMATE. OVERHEAD UTILITIES ARE NOT SHOWN.  
UNAUTHORIZED CHANGES OR USES: THE SANTA BARBARA COUNTY FLOOD CONTROL & WATER CONSERVATION DISTRICT AND ITS EMPLOYEES WILL NOT BE RESPONSIBLE FOR, OR LIABLE FOR, THE SANTA BARBARA COUNTY FLOOD CONTROL DISTRICT IS NOT RESPONSIBLE FOR THE ACCURACY OF THIS INFORMATION. CONTRACTOR SHALL NOTIFY UNAUTHORIZED CHANGES TO OR USES OF THESE PLANS. ALL PROPOSED CHANGES TO THE PLANS MUST BE PRESENTED IN WRITING TO THE DISTRICT AND APPROVED IN WRITING BY THE DISTRICT PRIOR TO IMPLEMENTATION OF ANY SUCH CHANGE OR USE.

REVISIONS			
NO.	DESCRIPTION	DATE	APR



DESIGNED BY:  
*KM Sullivan*  
FLOOD CONTROL DESIGN ENGINEER  
10/15/2019  
DATE

SANTA BARBARA COUNTY  
FLOOD CONTROL AND  
WATER CONSERVATION DISTRICT  
130 E. VICTORIA STREET  
SANTA BARBARA, CA 93101  
(805) 568-3440



MARIA YGNACIO CREEK  
MAIN BRANCH  
FUTURE POST-FIRE MITIGATION  
DEBRIS RACK  
SANTA BARBARA COUNTY, CALIFORNIA

**DETAILS**

DESIGNED BY:	RT/KS
DRAWN BY:	SB/KS
CHECKED BY:	JF
SHEET 4 OF 4	
Filename: MARIA YGNACIO RACK.DWG	