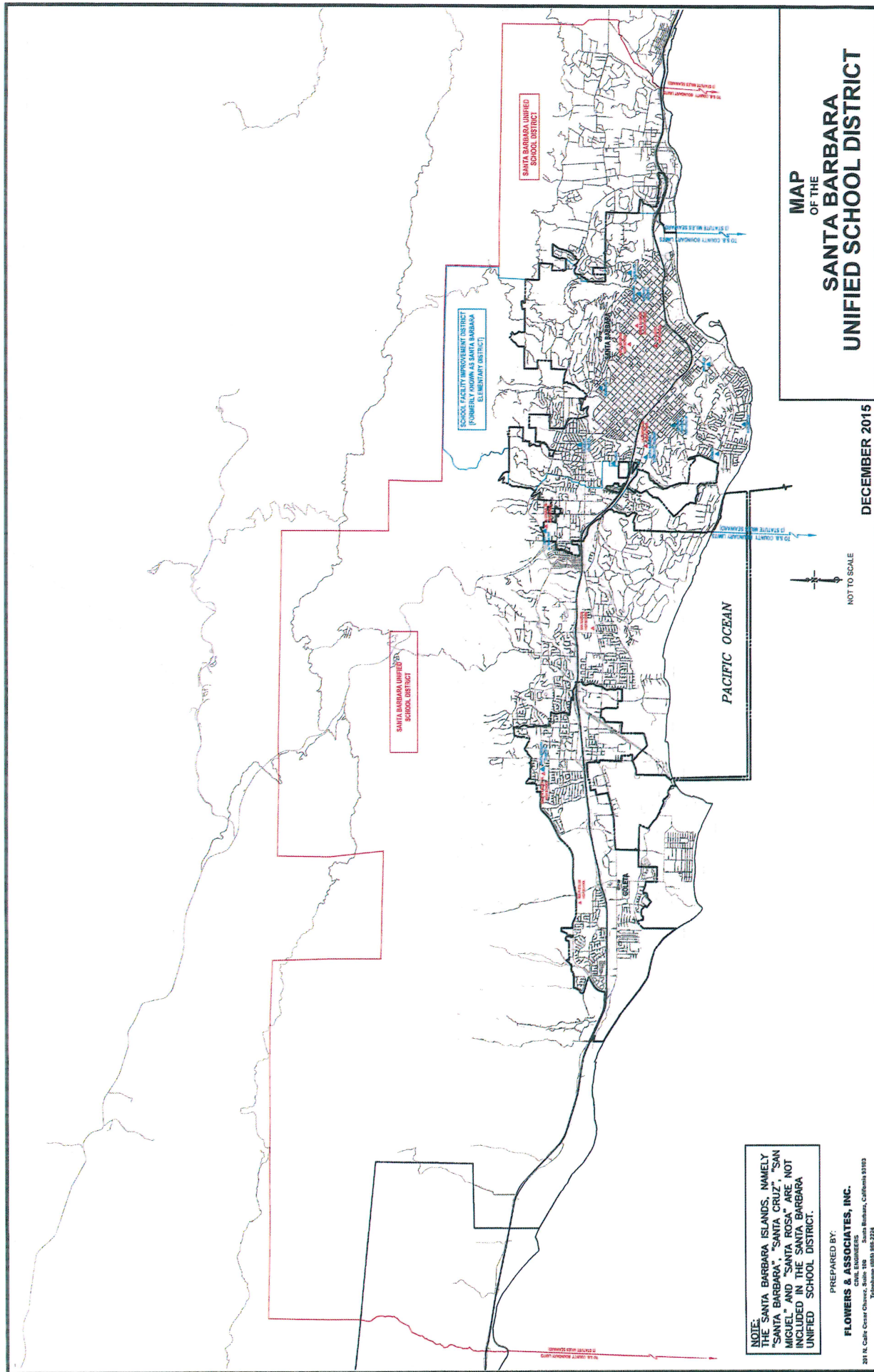


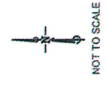
# Attachment 2:

## Maps



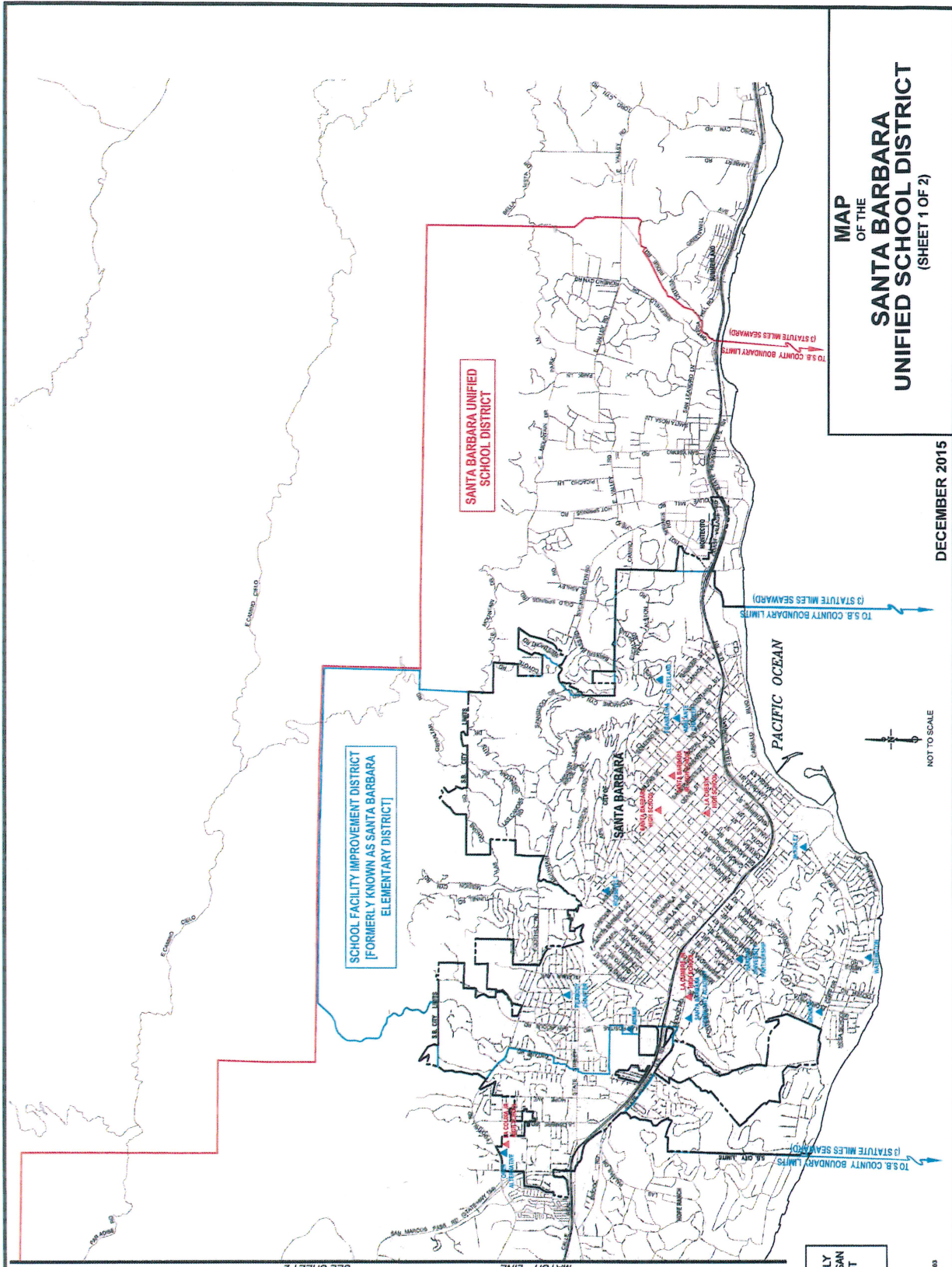
**MAP  
OF THE  
SANTA BARBARA  
UNIFIED SCHOOL DISTRICT**

DECEMBER 2015



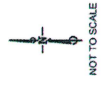
**NOTE:**  
THE SANTA BARBARA ISLANDS, NAMELY  
"SANTA BARBARA", "SANTA CRUZ", "SAN  
MIGUEL" AND "SANTA ROSA" ARE NOT  
INCLUDED IN THE SANTA BARBARA  
UNIFIED SCHOOL DISTRICT.

PREPARED BY:  
**FLOWERS & ASSOCIATES, INC.**  
CIVIL ENGINEERS  
201 N. Canal Street, Suite 100 Santa Barbara, California 93103  
Telephone: (805) 965-2254



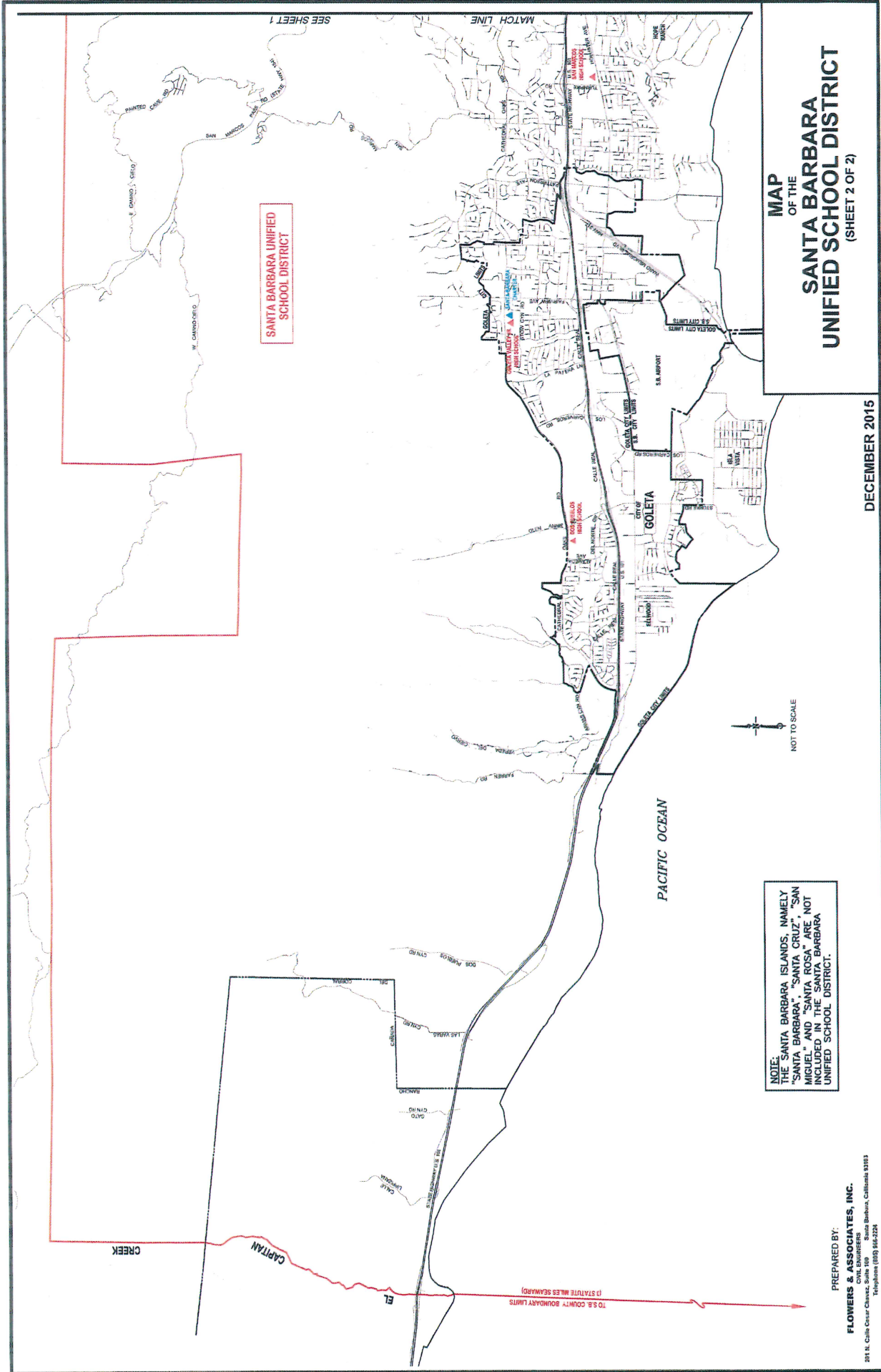
**MAP OF THE  
SANTA BARBARA  
UNIFIED SCHOOL DISTRICT  
(SHEET 1 OF 2)**

DECEMBER 2015



**NOTE:** THE SANTA BARBARA ISLANDS, NAMELY "SANTA BARBARA", "SANTA CRUZ", "SAN MIGUEL" AND "SANTA ROSA" ARE NOT INCLUDED IN THE SANTA BARBARA UNIFIED SCHOOL DISTRICT.

PREPARED BY:  
**FLOWERS & ASSOCIATES, INC.**  
321 N. Cule Clara Chavez, Suite 109 Santa Barbara, California 93103  
Telephone (805) 956-2224



**SANTA BARBARA UNIFIED SCHOOL DISTRICT**

**MAP OF THE SANTA BARBARA UNIFIED SCHOOL DISTRICT (SHEET 2 OF 2)**

DECEMBER 2015



**NOTE:** THE SANTA BARBARA ISLANDS, NAMELY "SANTA BARBARA", "SANTA CRUZ", "SAN MIGUEL", AND "SANTA ROSA" ARE NOT INCLUDED IN THE SANTA BARBARA UNIFIED SCHOOL DISTRICT.

PREPARED BY:  
**FLOWERS & ASSOCIATES, INC.**  
 CIVIL ENGINEERS

241 N. Calle César Chávez, Suite 100 Santa Barbara, California 93103  
 Telephone: (805) 965-2224

MATCH LINE SEE SHEET 1

TO S.A. COUNTY BOUNDARY LIMITS (1) STATE MILES SEAWARD