

Laguna County Sanitation District

FY 2026 – 2027 Rates and Fees

County of Santa Barbara
Board of Supervisors Hearing
June 9, 2026



Laguna County
Sanitation District

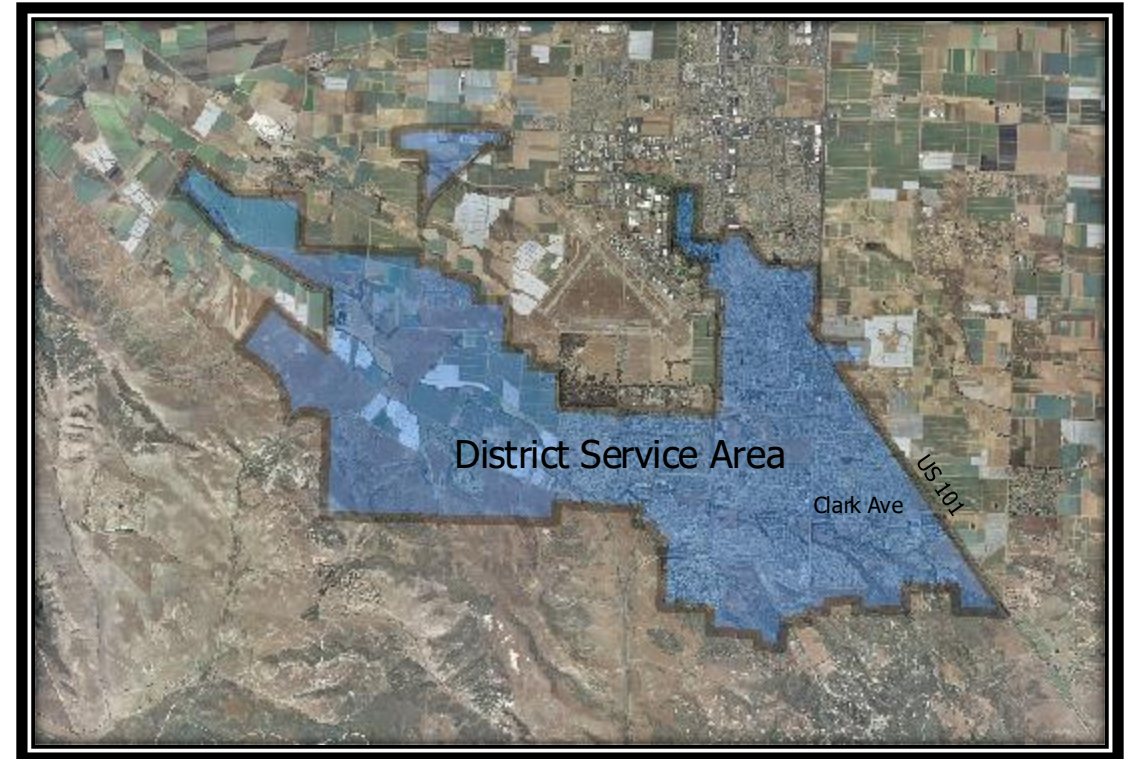
Laguna County Sanitation District

- Dependent special district created in 1958
- Provides wastewater services to Orcutt and unincorporated Santa Maria area
- Regulated by:
 - RWQCB Order R3-2020-0220 (reclamation plant)
 - SWRCB Order WQ 2016-0068-DDW (water reuse)
 - EPA (brine disposal well)
 - SWRCB 2022-0103-DWQ (sewer system)
 - SWRCB (operator licensing)
 - APCD (backup generators)
- Water reuse (most economic means)
- PV solar to reduce energy costs
- Facility improvements improve efficiency



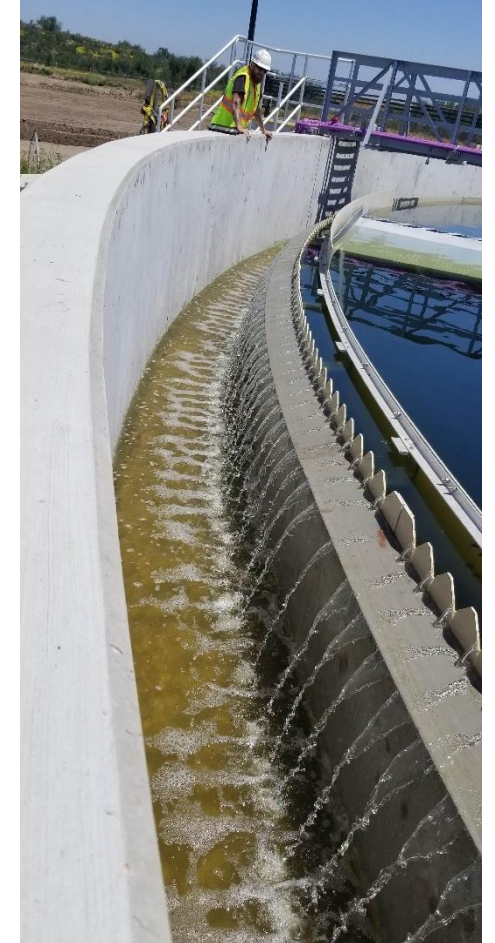
Annual Rates and Fees Ordinance

- Public noticing pursuant to Prop 218
 - Mailer to 13,338 customers on 11,046 parcels
- Hearing date published pursuant to Government Code in Santa Maria Times
- A small number of written responses (less than 1%)



Sewer Charge Rates

- Pay for annual operation, maintenance, replacement, and reserves
- Collected on the tax roll
- 3.0% overall revenue adjustment proposed for FY 2026-2027
 - Per rate study
 - CPI was 3.2% (annual 2025 average)



Proposed Sewer Charge

Residential unit equivalent (RUE) rate

Proposed annual rate	\$1,206.19
<u>Last year's rate</u>	<u>\$1,178.21</u>
Rate increase/year	\$ 27.98

Equivalent to \$2.33/month (monthly rate of \$100.52)

Multi. Family Res.	= \$977.01/year, \$1.89/mo. inc.
School	= \$64.64 per cap/year
Commercial	= Based on flow and load

Sewer Rates Countywide

Treatment Level	Agency	Monthly Rate	Inc.
Tertiary	Summerland	\$177.42*	
	Laguna	\$100.52	2.4%
	Lompoc	\$ 92.80	Study
Secondary	Vandenberg Village	\$ 75.67*	
	Montecito	\$143.14*	Study
	Santa Ynez	\$115.25*	
	CSA 12 Mission Canyon	\$107.41**	7.3%
	Mission Hills	\$ 95.02	8.4%
	Solvang	\$ 91.87	15.5%
	Carpinteria	\$ 87.07*	3.0%
	Los Alamos	\$ 83.15*	18.7%
	Buellton	\$ 82.54	40.0%
	Goleta West Sanitary	\$ 81.80	15.5%
	Santa Barbara	\$ 79.29	9.5%
	Cuyama	\$ 66.00	
	Guadalupe	\$ 57.61	
Santa Maria	\$ 48.62	20.1%	
Goleta Sanitary	\$ 45.56*	Study	
	Average	\$ 90.60	



* These rates include estimated property tax contributions.

** Also includes City of Santa Barbara rates

Study = a rate study is underway or proposed

Total Water Cost Comparison

<u>Agency</u>	<u>Water/Mo</u>	<u>Water and Sewer/Mo</u>
Summerland + Montecito Water	\$205.17	\$382.59
Montecito + Montecito Water	\$205.17	\$348.31
CSA 12 Mission Canyon + Santa Barbara	\$ 209.21	\$316.62
Santa Barbara	\$209.21	\$288.50
Goleta West Sanitary + Goleta Water	\$ 181.49	\$263.29
Carpinteria + Carpinteria Valley Water	\$142.77	\$229.84
Solvang	\$136.07	\$227.94
Goleta Sanitary + Goleta Water	\$181.49	\$227.05
Cuyama	\$151.80	\$217.80
Santa Ynez + Santa Ynez RWCD 1	\$ 95.69	\$210.94
Laguna + Golden State Water	\$ 86.18	\$186.70
Mission Hills	\$ 83.94	\$178.96
Lompoc	\$ 79.36	\$172.16
Los Alamos	\$ 88.44	\$171.59
Santa Maria	\$113.10	\$161.72
Buellton	\$ 70.23	\$152.77
Guadalupe	\$ 90.65	\$148.26
Vandenberg Village	\$ 49.76	\$125.43
Average		\$240.03



Water rates pay for recycling for Santa Barbara and Goleta
 Water rates pay for salt reduction (state water) in Santa Maria
 Groundwater Basin by Santa Maria and Guadalupe

Developer Charges and Fees



- Paid by development for sewer system equity buy-in
- Connection charges fund treatment and discharge improvements
 - Trunk line fees fund collection system improvements

Developer Charges and Fees

- Fees adjusted per index as prescribed by ordinance or agreement
- Connection charge per RUE (CCI =2.8%) \$11,184
- Trunk Line Fees
 - Dutard trunk line per RUE (CCI = 2.8%) \$1,428
 - Bradley trunk line per RUE (PR = 6.75%) \$4,014

RUE = Residential Unit Equivalent

CCI = Engineering News Record Construction Cost Index

PR = Prime Rate set by developer reimbursement agreement

Recommended Actions

- a) Receive and file with the Clerk of the Board the fixed charge report for fiscal year 2026-2027 (Attachment A);
- b) Approve the introduction (First Reading) of an Ordinance Amending Ordinance Nos. 3130 and 4142 to Change the Annual Service Charge, Connection Charge, and the Dutard-Solomon and Bradley-Solomon Trunk Sewer Fees (Attachment B);
- c) Read title: “An Ordinance of the Laguna County Sanitation District Amending Ordinance No. 3130 Adopted November 19, 1979, Which Established Service Charges, Connection Charges, and Other Rules and Regulations as Amended by Ordinance No. 4142 Adopted December 9, 1993 Establishing Trunk Sewer Fees. This Amending Ordinance Changes the Annual Service Charge and Connection Charge for Single Family and Duplex Dwelling Units, Apartments, Condominiums, Trailer Spaces, Mobile Homes and Non-residential Development; and also Changes the Dutard-Solomon and Bradley-Solomon Trunk Sewer Fees,” and waive reading of the Ordinance in full;
- d) Direct the Clerk of the Board to count and report the number of written protests, if any;
 - i. If no majority protest, set a hearing (Second Reading) on the Administrative Agenda for June 23, 2026 to:
 1. Adopt the Ordinance Amending Ordinance Nos. 3130 and 4142 to Change the Annual Service Charge, Connection Charge, and the Dutard-Solomon and Bradley Solomon Trunk Sewer Fees;
 2. Adopt the Resolution authorizing the collection of said charges on the tax roll (Attachment C); and
 3. Determine that the above actions are statutorily exempt from the California Environmental Quality Act (CEQA) pursuant to Section 15273(a)(1), (2), (3), and (4) of the CEQA Guidelines because they are modifications of service charges, connection charges, and trunk line fees for the purposes of meeting operating and capital expenses, as well as for meeting financial reserve needs required to maintain services within this existing service area, and the modifications in charges and fees are not for the construction of capital projects for the expansion of the service system and approve the filing of a Notice of Exemption on that basis.
 - ii. If majority protest, take no action and provide direction to staff.