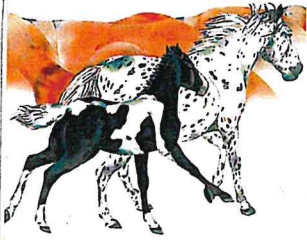


Public Comment - Group 7

LATE DIST

#6



Patricia Botana Escalera
4132 Vista Clara Rd
Santa Barbara, CA 93110

Please
Vote
NO ON
"A" & "B"
SAVE THE MODOC
PRESERVE



NOV - 1 2022

1ST DISTRICT OFFICE

MR DAS WILLIAMS

BOARD OF SUPERVISORS

105 E ANA PAM V ST

SANTA BARBARA CA

93101

MR WILLIAMS:
HERE ARE THE SURVIVORS
OF THE PAINTED CAVE
FIRE. PLEASE DO NOT
LET THE COUNTY CUT
ANY OF THE TREES DOWN.
THANK YOU, PATTY

Howard Packaging Corp., P.O. Box 3609, Wayne N.J. 07474-3609

2022 NOV - 1 P 2:35
COUNTY OF SANTA BARBARA
CLERK OF THE
BOARD OF SUPERVISORS

RECEIVED



Patricia Botana Escalera
4132 Vista Clara Rd, Santa Barbara, CA 93110

Please Vote
NO ON "A" & "B"



NOV 1 2022

1ST DISTRICT OFFICE

MR DAS WILLIAMS

BOARD OF SUPERVISORS

105 E ANA PAM V ST

SANTA BARBARA, CA

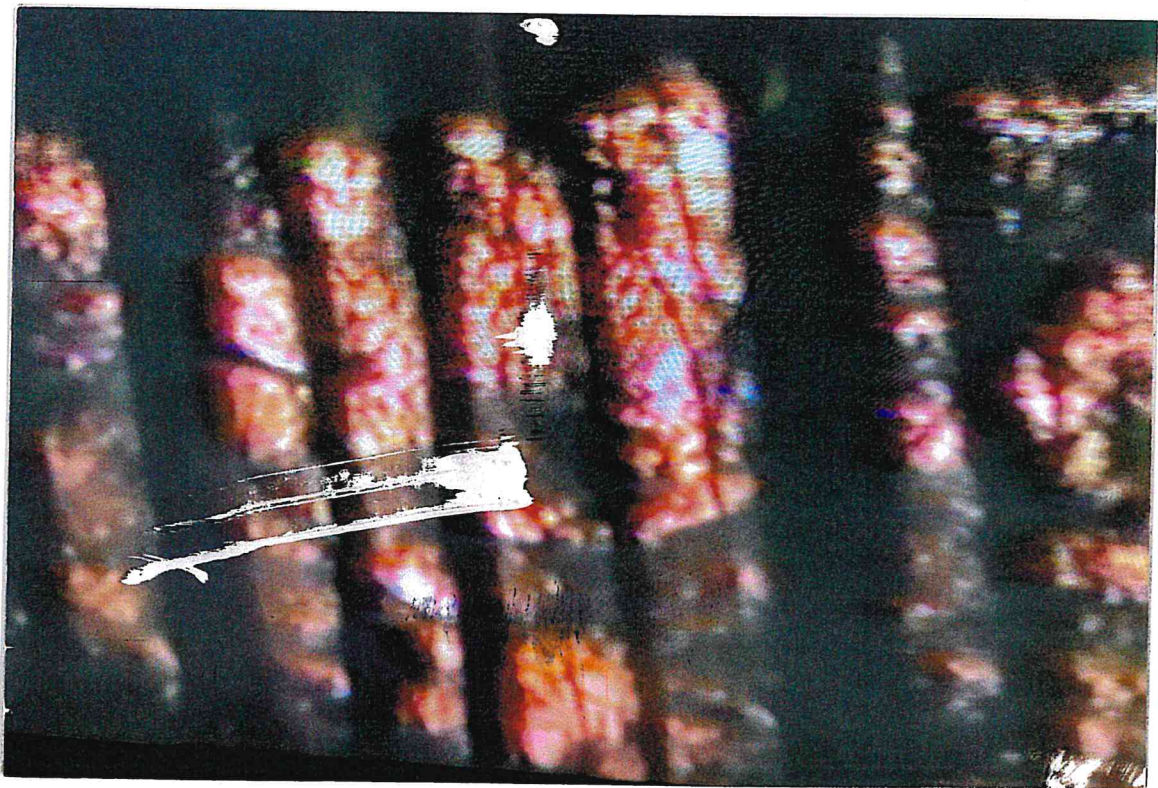
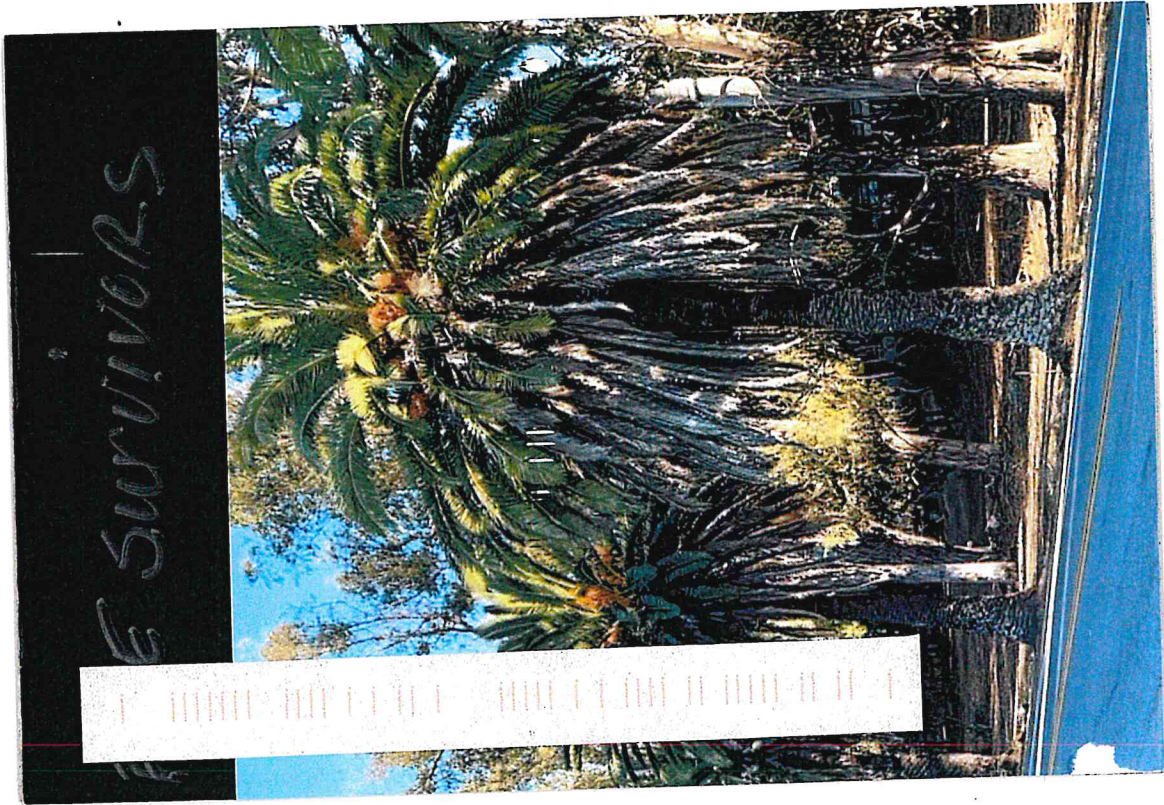
Dear Mr Williams:
This is a photo of the
Painted Cave fire which
blew through the preserve
in the '90's. Most of the
palms survived. The
MODOC Preserve is for
Horses, Wildflowers, All trees,
Butterflies
Bikes, Hikes

10/27

I keep the main path on MODOC KOTTO

Howard Packaging Corp., P.O. Box 3609, Wayne N.J. 07474-3609

you
try





Patricia Botana Escalera
4132 Vista Clara Rd, Santa Barbara, CA 93110

Mr Williams,
This is Vujak Drive.
It can accommodate
ADA & Pedestrians, SAFELY
AND IT ALREADY EXIST.
PLEASE DO NOT CUT DOWN
OUR MODOC PRESERVE
TREES AND KILL OUR WILDLIFE
INCLUDING EUCALYPTUS
AND CANARY PALMS.
THANK YOU, PATTY

VOTE
NO ON
A & B
PLEASE!



NOV - 1 2022

1ST DISTRICT OFFICES
MR DAS WILLIAMS
BOARD OF SUPERVISORS
105 E ANA PAMU ST
SANTA BARBARA CA
93101

PostNet
Howard Packaging Corp., P.O. Box 3609, Wayne N.J. 07474-3609



Patricia Botana Escalera
4132 Vista Clara Rd, Santa Barbara, CA 93110

Dear MR WILLIAMS,
NOT EVERY STREET IN
SB COUNTY CAN ACCOM-
MODATE A CLASS ONE
BIKE PATH. PLEASE, DO
NOT CUT TREES AND KILL
WILDLIFE ON THE MODOC
PRESERVE. THANK YOU
PATTY ♡

Please VOTE
"NO ON A & B"
THANK YOU



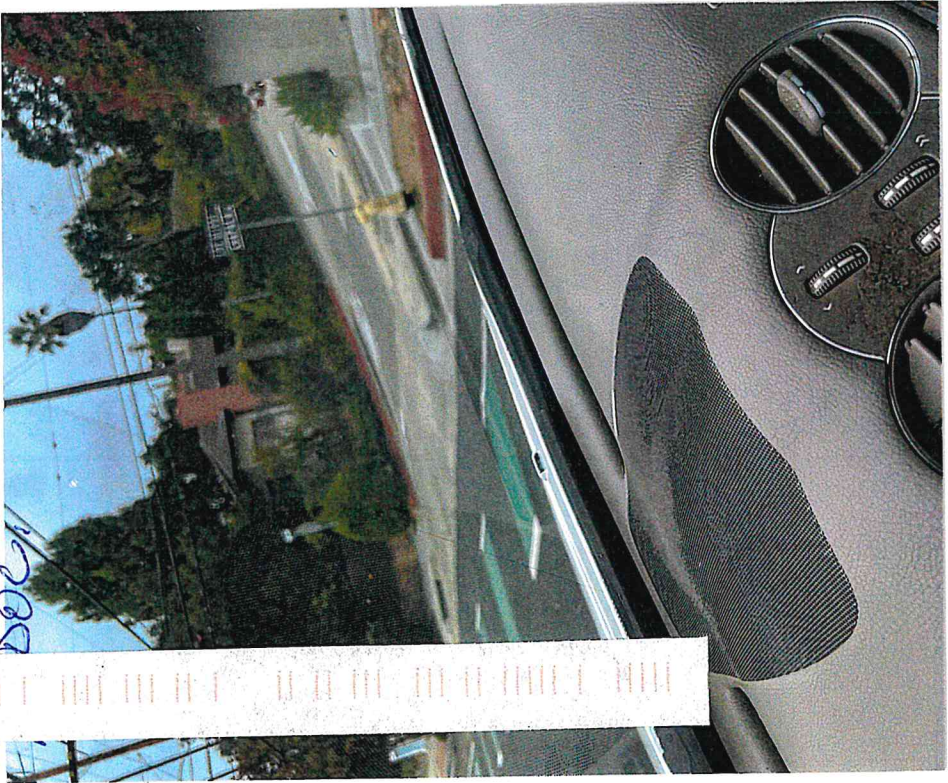
NOV - 1 2022

1ST DISTRICT OFFICES
MR DAS WILLIAMS
BOARD OF SUPERVISORS
105 E ANA PAMU ST
SANTA BARBARA CA
93101

PostNet
Howard Packaging Corp., P.O. Box 3609, Wayne N.J. 07474-3609

Edit

THE CITY HAS THIS BIKE PATH
TAPPAHA, LOWER THE SPEED
LIMIT AND ADD STOP SIGNS ON
DOCK





Patricia Botana Escalera
4132 Vista Clara Rd
Santa Barbara, CA 93110



RECEIVED



MR DAS WILLIAMS
BOARD OF SUPERVISORS
105 E ANAPAMU ST
SANTA BARBARA, CA

Dear Mr. Williams,
Please vote "NO" on both
Bike Path alignments on
MODOC. Please, keep the
MODOC Preserve a preserve
including the Canary
Palms that grace MODOC Rd.
Bike Path can be put on MODOC

93101
safely. Thank you
Patley

Howard Packaging Corp., P.O. Box 3609, Wayne N.J. 07474-3609

RIDERS

PLEASE USE WOOD CHIP

PREPARED HORSE TRAILS

ONLY

DO NOT RIDE ON

PEDESTRIAN PATHWAY





Patricia Botana Escalera
4132 Vista Clara Rd, Santa Barbara, CA 93110

10/22



NOV - 1 2022

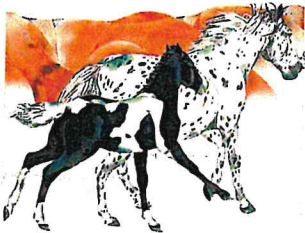
2ND DISTRICT OFFICE
MR GREGG HART

105 E ANAPAMU ST
SANTA BARBARA CA
93101

BOARD of supervisors
Thank you
Patricia

Mr Hart,
The Modoc Preserve is managed
by the LAND TRUST of SB
County and there is a
legal CONSERVATION DEED
Protecting the Modoc Preserve
and the CANARY PALMS.
Please adhere to this legal
Deed. Put the BIKE PATH
ON Modoc using STOP SIGNS
& SIDEWALK.

Photo Postcard™, Howard Packaging Corp., P.O. Box 3609, Wayne NJ, 07474-3609



Patricia Botana Escalera
4132 Vista Clara Rd
Santa Barbara, CA 93110

10/22



10/22

Dear Mr Hart,
Wildlife is everywhere
in our Modoc Preserve
Please, Vote NO, and
Put the bike path on
Modoc Road without
removal of ANY trees etc.

Photo Postcard™, Howard Packaging Corp., P.O. Box 3609, Wayne NJ, 07474-3609



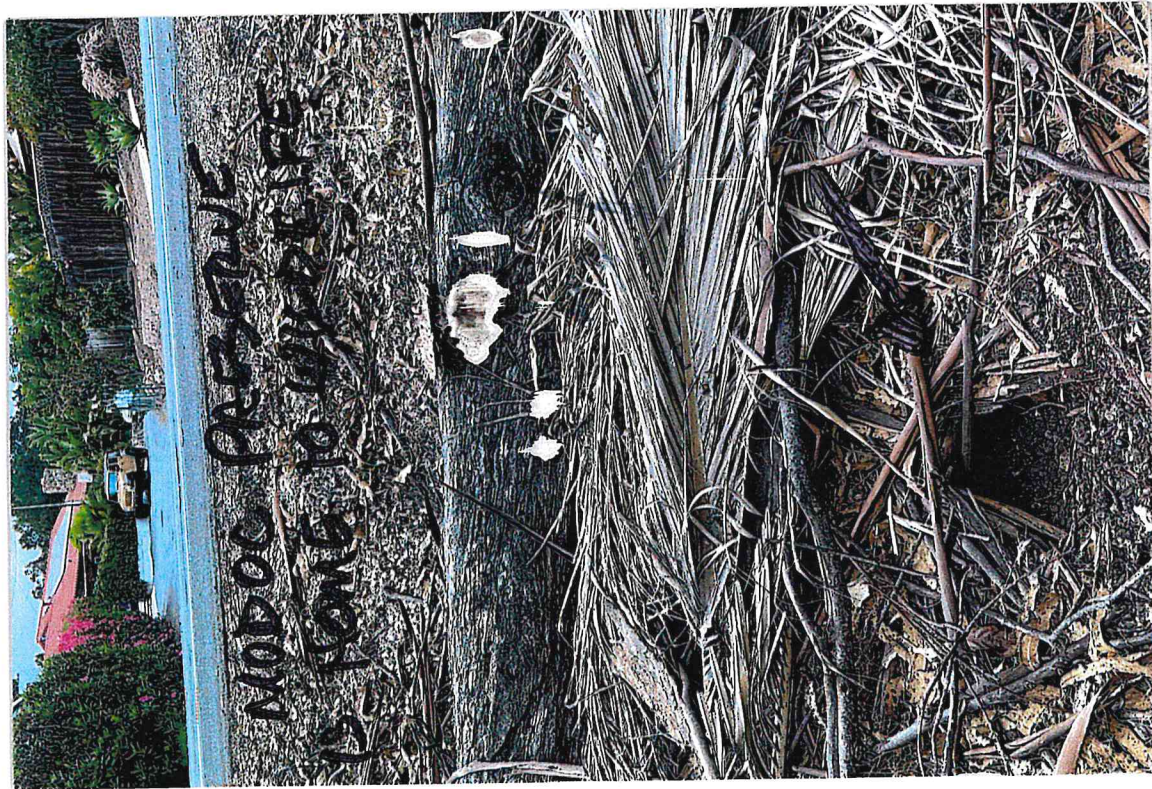
RECEIVED

NOV - 1 2022

2ND DISTRICT OFFICE
MR GREGG HART

BOARD of supervisors
105 E ANAPAMU ST
SANTA BARBARA, CA
93101

Thank you,
Patricia



This Land is Protected Forever

La Cumbre Mutual Water Company and The Land Trust for Santa Barbara County created a conservation easement to ensure that this land's scenic, recreational, and open space and wildlife values will always be retained.

THIS INCLUDES THE CANARY PALMS



For more information contact
The Land Trust: (805) 966-4520.

Please stay on the trail.

AND EUCALYPTUS TREES



Patricia Botana Escalera
4132 Vista Clara Rd, Santa Barbara, CA 93110

10/22



RECEIVED
NOV - 1 2022

2ND DISTRICT OFFICE

Mr Hart,
This is actual footage
of the Painted Cave fire
All these trees are
now beautifying
Moloc Rd. Please
Vote "No" on Alignment
A & B. Thank you,
Patty

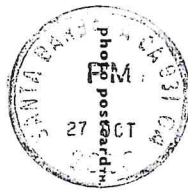
MR GREG HART
BOARD OF SUPERVISORS
105 E ANAPAMU ST
SANTA BARBARA CA
93101

Photo Postcard, Howard Packaging Corp., P.O. Box 3609, Wayne NJ, 07474-3609



Patricia Botana Escalera
4132 Vista Clara Rd
Santa Barbara, CA 93110

10/22



RECEIVED
NOV - 1 2022

2ND DISTRICT OFFICE

DEAR MR HART,
PLEASE VOTE "NO" ON
ALIGNMENTS "A & B". KEEP
THE PRESERVE A PRESERVE
INCLUDING THE CANARY
PALMS, HORSES & BIKES DON'T GET ALONG!

MR GREG HART
BOARD OF SUPERVISORS
105 E ANAPAMU ST
SANTA BARBARA, CA
93101
Thank you
PATTY

Photo Postcard, Howard Packaging Corp., P.O. Box 3609, Wayne NJ, 07474-3609





Patricia Botana Escalera
4132 Vista Clara Rd, Santa Barbara, CA 93110



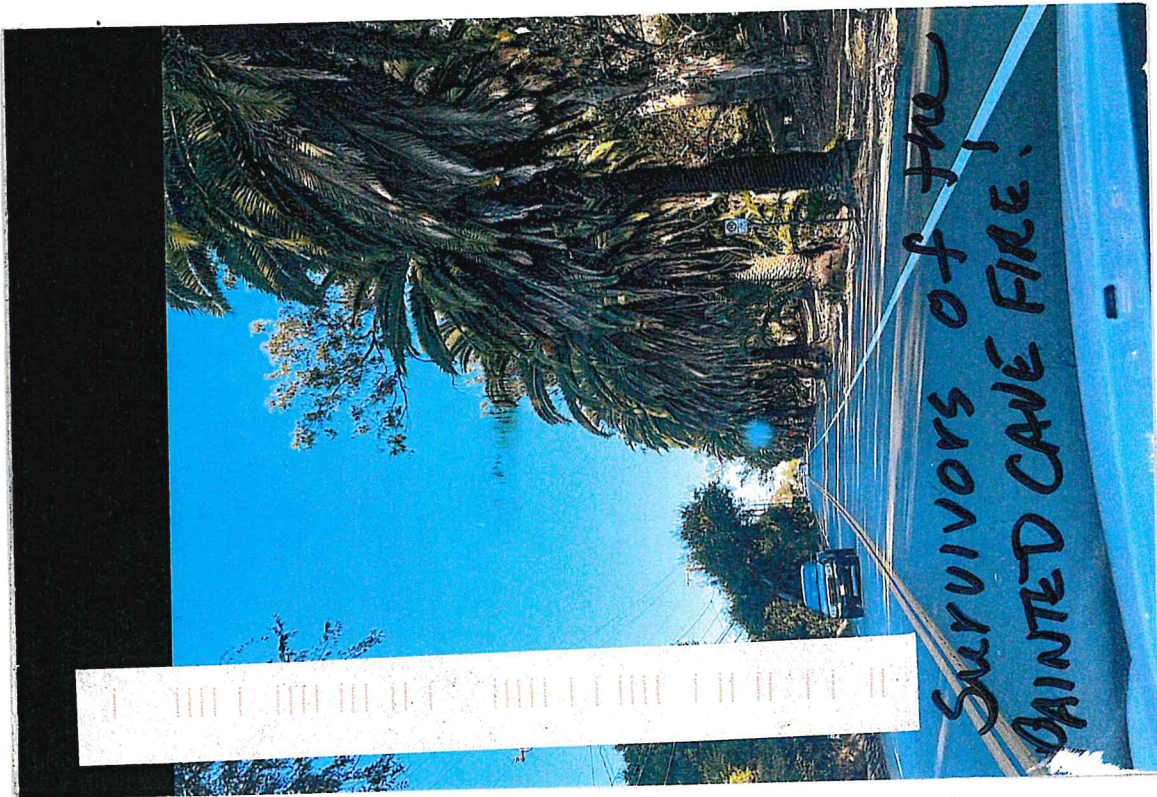
Dear Mr Hart,

If you carefully look
 at these Canary Palms, you will notice they
 all are blackened from the painted Cave fire
 and they are all survivors. Please do not
 cut any trees Down.

Vote No and put bike path on Modoc path

2ND DISTRICT OFFICE
 MR GREGG HART
 BOARDS OF SUPERVISORS
 105 E ANAPAYU ST
 SANTA BARBARA CA
 93101

Howard Packaging Corp., P.O. Box 3007, Wayne, NJ 07474-0307



*SURVIVORS OF THE
PAINTED CAVE FIRE!*



Patricia Botana Escalera
4132 Vista Clara Rd, Santa Barbara, CA 93110

PLEASE VOTE
NO ON ASSIGNMENTS
A AND B



RECEIVED
NOV 1 2022

THIRD DISTRICT OFFICE

DEAR MS HARTMAN,
THIS IS A PHOTO OF THE
PAINTED CAVE FIRE IN THE
MODOC PRESERVE. ALL OF
THE MATURE TREES INCLUDING
THE EUCALYPTUS THEY
HOUSE THE WILDLIFE AND
ARE PROTECTED BY THE LAND
TRUST OF SANTA BARBARA
COUNTY. THANK YOU, PATTY

MS. JOAN HARTMAN
BOARD OF SUPERVISORS
105 E ANAPAMU ST
SANTA BARBARA CA
93101

photo postcard
Howard Packaging Corp., P.O. Box 3609, Wayne, N.J. 07474-3609



Patricia Botana Escalera
4132 Vista Clara Rd, Santa Barbara, CA 93110

PLEASE VOTE
NO ON A & B
THANK YOU



RECEIVED
NOV 1 2022

THIRD DISTRICT OFFICE

DEAR MS. HARTMAN,
THE MODOC PRESERVE IS
PROTECTED IN PERPETUITY
AND THE SIGNS CAN BE
SEEN THROUGHOUT THE
PRESERVE. THE SB LAND
TRUST PROTECTS ALL TREES
INCLUDING CANARY PALMS
AND EUCALYPTUS WHICH
HOUSE WILDLIFE
THANK YOU, PATTY

MS. JOAN HARTMAN
BOARD OF SUPERVISORS
105 E ANAPAMU ST
SANTA BARBARA CA
93101

photo postcard
Howard Packaging Corp., P.O. Box 3609, Wayne, N.J. 07474-3609

This Land is Protected Forever

A Cumbre Mutual Water Company and The Land Trust for Santa Barbara County created a conservation easement to ensure that this land's scenic, recreational, open space and wildlife values will always be retained.



For more information contact
The Land Trust: (805) 966-4520.

Please stay on the trail.



PATTY ESCALERA
4132 VISTA CLARA ROAD
SANTA BARBARA CA 93101

Dear MS HARTMANN,
TREES AND WILDLIFE ARE GIFTS
FROM GOD. WILDLIFE, LIKE LIZARDS,
DUCKS, SNAKES, BUTTERFLIES,
BIRDS, SQUIRRELS, ETC HAVE
EVERY RIGHT TO LIVE AS WE DO.
TREES GIVE US OXYGEN, SHADE,
HOMES FOR WILDLIFE, FRUIT,
BEAUTY. CUTTING DOWN TREES
FOR PICTURE CONSERVATION IS
NOT CONSERVATION. TREES SHOULD
NOT BE CUT DOWN FOR GROWTH &
DEVELOPMENT, EVER. PLEASE SAVE
THE
MODOC PRESERVE



Howard Packaging Corp., P.O. Box 3609, Wayne NJ 07474-0609

Please vote NO
ON ALIGNMENTS
A & B



MS. JOAN HARTMANN
BOARD OF SUPERVISORS
105 E ANA PAMU ST
SANTA BARBARA, CA

93101

Thank you, PATTY



Patricia Botana Escalera
4132 Vista Clara Rd
Santa Barbara, CA 93110

Please vote NO
ON ALIGNMENTS
A & B,



Howard Packaging Corp., P.O. Box 3609, Wayne NJ 07474-0609



MS JOAN HARTMANN
BOARD OF SUPERVISORS
105 E ANA PAMU ST
SANTA BARBARA CA

93101

DEAR MS HARTMANN,
THE MODOC PRESERVE IS THE
HOME TO TREES THAT HOUSE
WILDLIFE, EUCALYPTUS TREES
ARE HOME TO MONARCHS AND
RAPTORS AND OWLS. TRAILS ARE
OPEN FOR EQUESTRIAN AND
HIKERS. PLEASE LEAVE MODOC PRESERVE
AND HERCANYARY PALMS ALIVE FOR
US. Thank you PATTY

