



County Roads Speed Limits



*Board of Supervisor's Hearing
October 27, 2009*



County Roads Speed Limits

Board of Supervisor's Hearing

October 27, 2009



Speed Limits

- **State law sets maximum speed limits**
 - Criteria for speed zones are established by the California Vehicle Code (CVC)
- **Local agencies can set speed limit zones with an Engineering and Traffic Survey (ETS)**
 - The approved methodology for an ETS is established by Caltrans
 - Local authorities may also consider residential density and pedestrian and bicycle safety per California Assembly Bill AB2767
- **ETS is valid for up to 10 years**
- **Enforcement on County roads is performed by the CHP**
- **Establishing a speed zone by ETS enables CHP enforcement with tools such as radar**
 - Speeds zones established without an ETS can only be enforced by pacing
 - The CHP prefers to enforce by radar because it is more effective and efficient



County Roads Speed Limits

Board of Supervisor's Hearing

October 27, 2009



Process for Establishing a Speed Limit

- Engineering and Traffic Survey (ETS) is performed
- ETS results presented to the County Traffic Engineering Committee (TEC)
- TEC recommendations are presented to the Board of Supervisors
- Board amends County Code by ordinance to designate speed limit zone(s)
- Appropriate signage and roadway markings are installed
- Documentation is provided to the CHP for enforcement



County Roads Speed Limits

Board of Supervisor's Hearing

October 27, 2009



Engineering and Traffic Survey

Speed Study

- Speed of free flow traffic is recorded
- Sample size must be more than 50, normally 100 vehicles
- Road conditions are recorded
- Daily traffic volume is recorded
- Collision data is collected
- Analyze speed data
 - ✓ 85th Percentile
 - ✓ Pace
- Reviewed by Traffic Engineering Committee and recommendation to the Board of Supervisors
- -Board of Supervisors amends County Code by ordinance





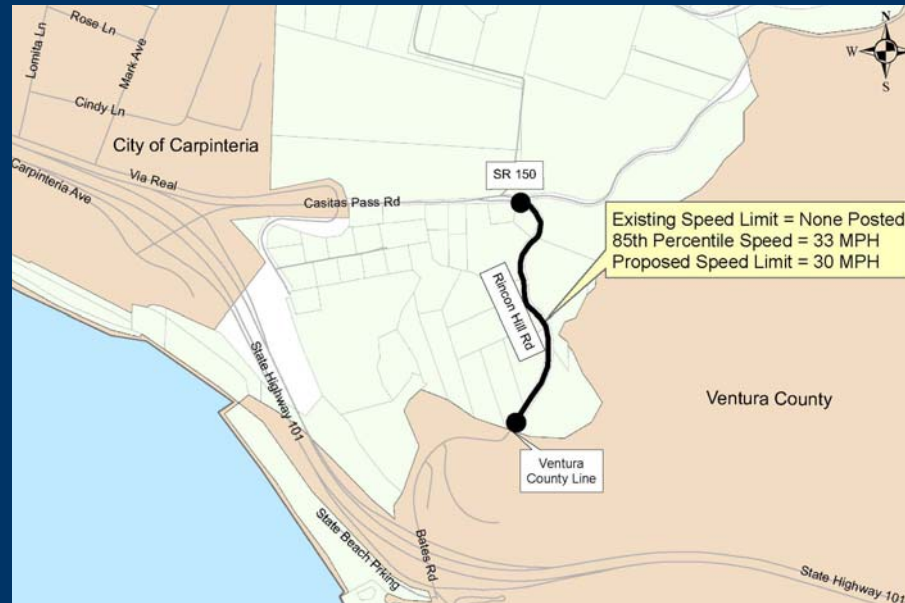
County Roads Speed Limits

Board of Supervisor's Hearing

October 27, 2009



Establish Speed Limit



Rincon Hill Road

From	Ventura County Line	
To	State Route 150	
85 th Percentile Speed	33 MPH	
Nearest 5 mph Increment	35 MPH	
Recommended Speed Limit	30 MPH	



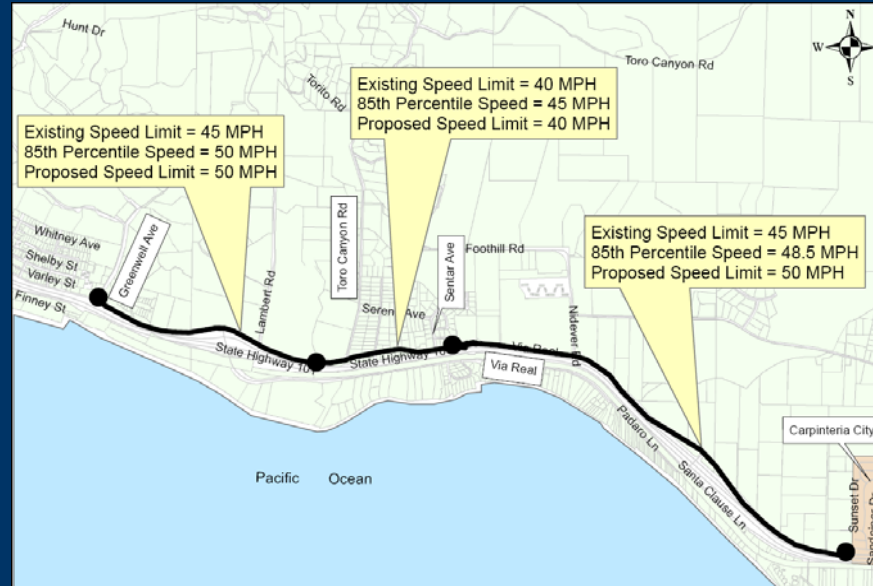
County Roads Speed Limits

Board of Supervisor's Hearing

October 27, 2009



Reevaluation of Speed Limit



Via Real – Segment 1

From	Greenwell Avenue	
To	800' west of Toro Canyon Rd.	
85 th Percentile Speed	50 MPH	
Nearest 5 mph Increment	50 MPH	
Recommended Speed Limit	50 MPH	

Via Real – Segment 2

From	800' west of Toro Canyon Rd.	
To	400' east of Sentar Avenue	
85 th Percentile Speed	45 MPH	
Nearest 5 mph Increment	45 MPH	
Recommended Speed Limit	40 MPH	

Via Real – Segment 3

From	400' east of Sentar Avenue	
To	Carpinteria City Limits	
85 th Percentile Speed	48.5 MPH	
Nearest 5 mph Increment	50 MPH	
Recommended Speed Limit	50 MPH	



County Roads Speed Limits

Board of Supervisor's Hearing

October 27, 2009



Reevaluation of Speed Limit



Middle Road

From	Santa Barbara City Limits	
To	Hot Springs Road	
85 th Percentile Speed	39 MPH	
Nearest 5 mph Increment	40 MPH	
Recommended Speed Limit	35 MPH	



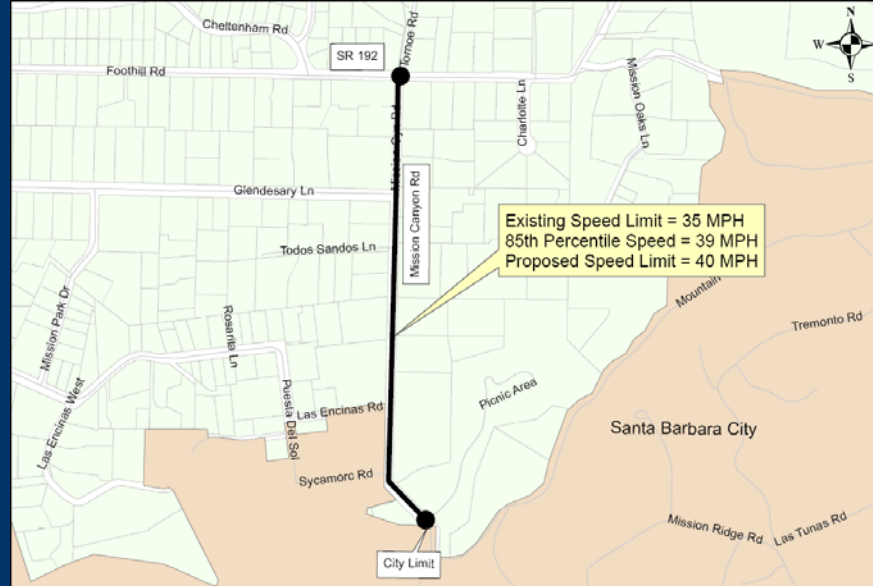
County Roads Speed Limits

Board of Supervisor's Hearing

October 27, 2009



Reevaluation of Speed Limit



Mission Canyon Road

From	Santa Barbara City Limits	
To	State Route 192	
85 th Percentile Speed	39 MPH	
Nearest 5 mph Increment	40 MPH	
Recommended Speed Limit	35 MPH	



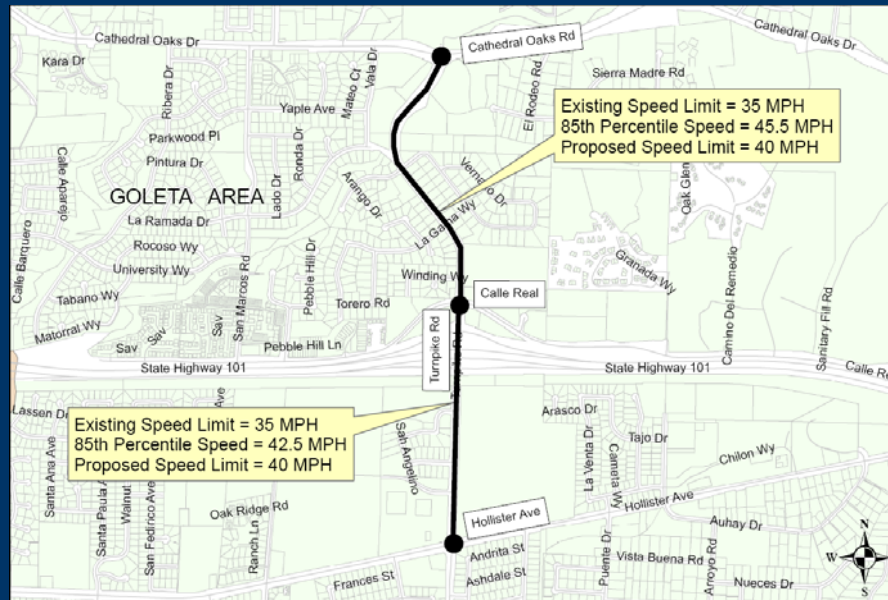
County Roads Speed Limits

Board of Supervisor's Hearing

October 27, 2009



Reevaluation of Speed Limit



Turnpike Road – Segment 1

From	Hollister Avenue
To	Calle Real
85 th Percentile Speed	42.5 MPH
Nearest 5 mph Increment	40 MPH
Recommended Speed Limit	40 MPH

Turnpike Road – Segment 2

From	Calle Real
To	Cathedral Oaks Road
85 th Percentile Speed	45.5 MPH
Nearest 5 mph Increment	45 MPH
Recommended Speed Limit	40 MPH



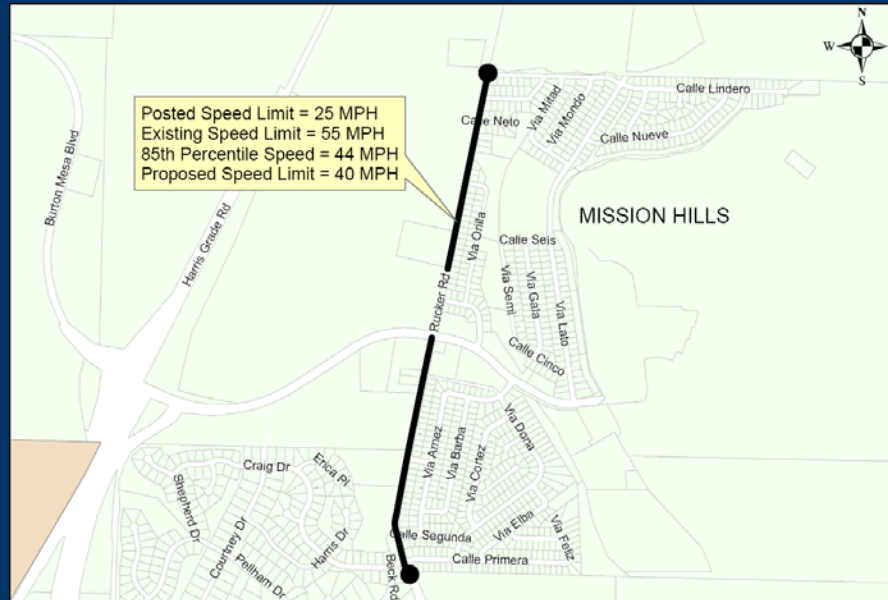
County Roads Speed Limits

Board of Supervisor's Hearing

October 27, 2009



Reevaluation of Speed Limit



Rucker Road

From 200' south of Calle Primera

To Calle Lindero

Existing Speed Limit 55 MPH

85th Percentile Speed 44 MPH

Nearest 5 mph Increment 45 MPH

Recommended Speed Limit 40 MPH



County Roads Speed Limits

Board of Supervisor's Hearing

October 27, 2009



Recommendations

The County of Santa Barbara Department of Public Works recommends that your Board adopt an ordinance amending Chapter 23 of the Santa Barbara County Code thereby establishing the following Speed Limit Zones:

Speed Zones	
Rincon Hill Road	30 MPH
Via Real – Segments 1 & 3	50 MPH
Via Real – Segment 2	40 MPH
Middle Road	35 MPH
Mission Canyon Road	35 MPH
Turnpike Road – Segments 1 & 2	40 MPH
Rucker Road	40 MPH



County Roads Speed Limits

Board of Supervisor's Hearing

October 27, 2009



Thank You!

*Board of Supervisor's Hearing
October 27, 2009*