

Water Supply Outlook for Santa Barbara County

Presentation to
County Board of Supervisors
October 21, 2008

Overview



- CA Water Supply Outlook
- SBC Water Supply Outlook
- Local Demand & Consumption
- Local Purveyor Perspective

California's Water Supply Outlook

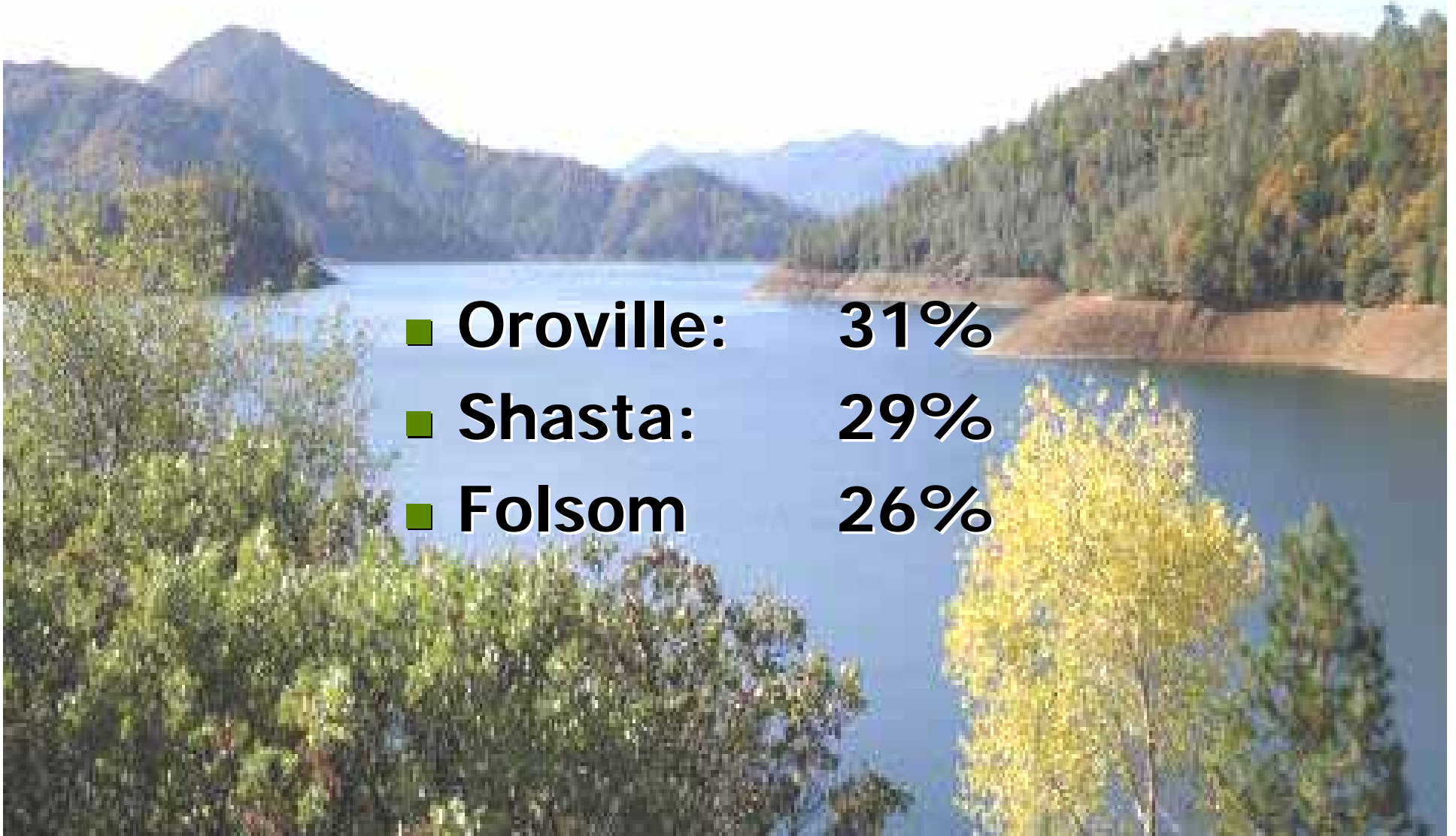
Governor's Drought Proclamation: June 2008

- 2 Years of below normal rainfall. As little as 20% of normal for some CA areas in 2007.
- Snow pack water content @ 67% of normal.
- Reservoir storage well below normal.
- Runoff forecast to be less than 50% normal.
- Increased fire danger.

State Reservoir Status

Percent of Capacity as of October 19:

- Oroville: 31%
- Shasta: 29%
- Folsom 26%



State Water Project – State Wide

Projected 2008 deliveries 35% of Maximum Request



Oroville Dam

Santa Barbara County's Water Supply Outlook

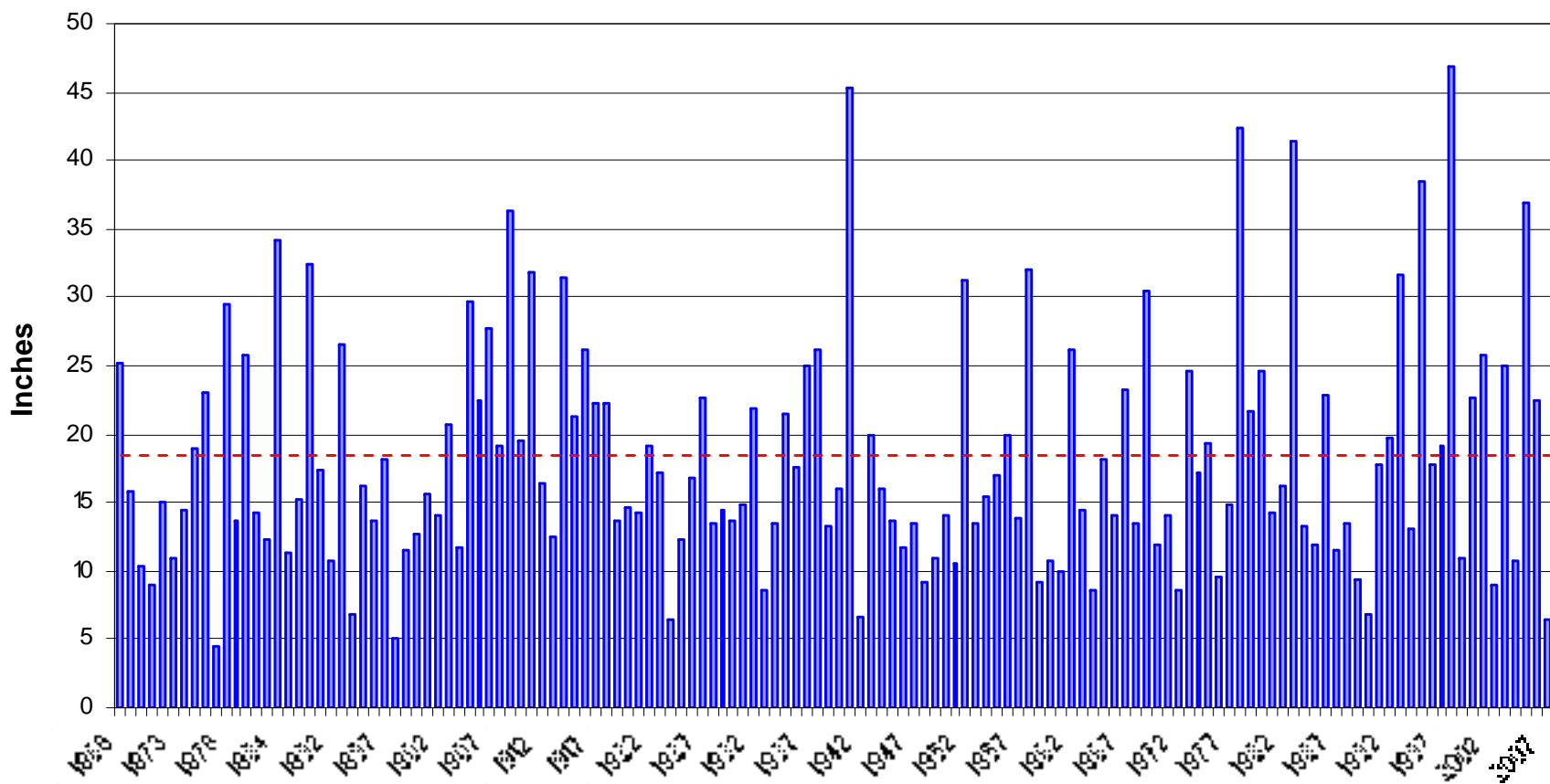
Santa Barbara County Water Supply Status

- SB utilizes a diverse range of water sources
- Lake Cachuma holds several years of supply
- Many groundwater basins managed or in balance
- Imported water is only a partial source
- Opportunities for banking and exchange of water
- Demand mgmt through water conservation

Santa Barbara Rainfall

1868 - 2008

(Average Rainfall = 18.16 inches)

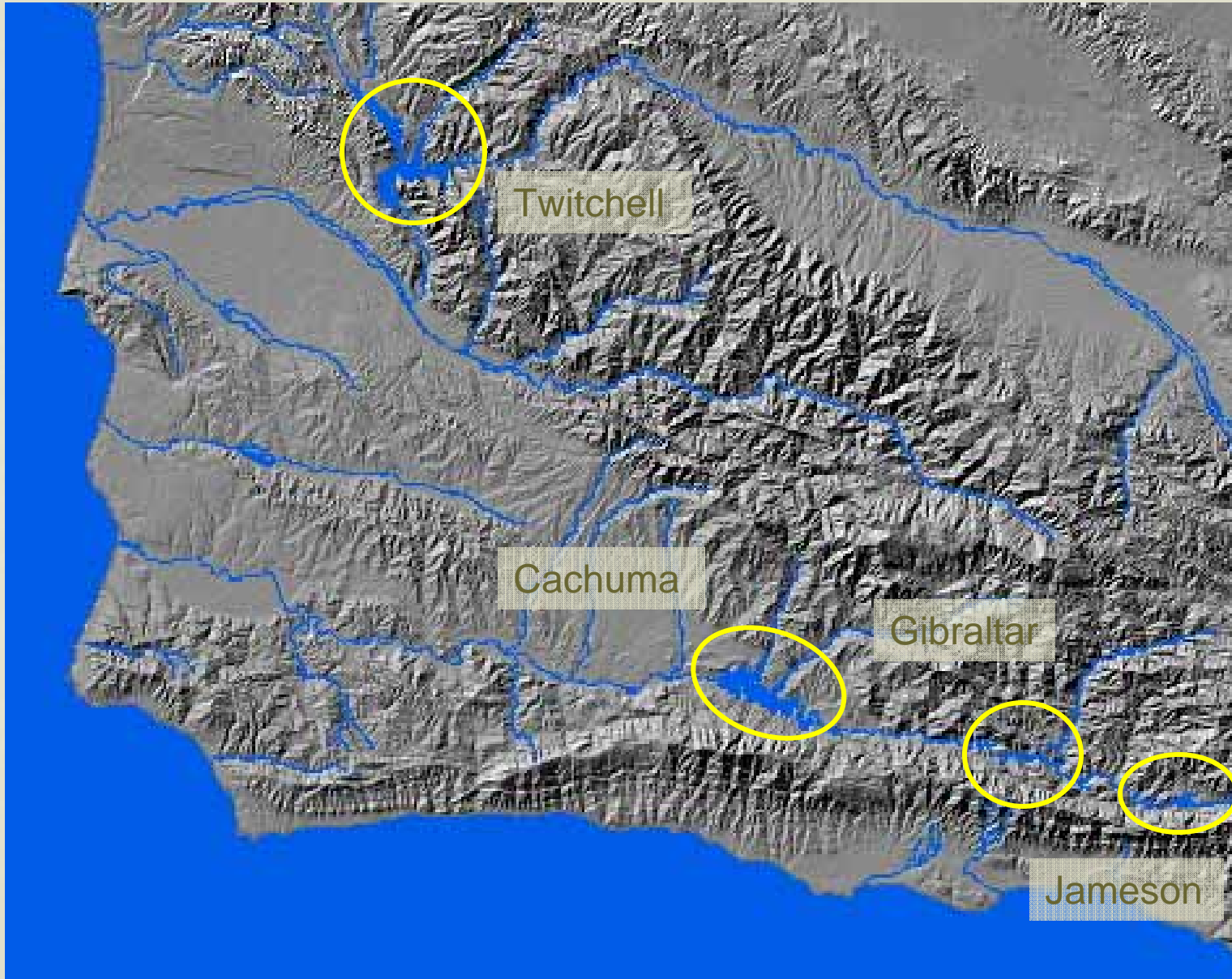


2008 Rainfall nearly normal. Significant inflow to reservoirs due in part to rainfall distribution and denuded Zaca Fire Watersheds.

Santa Barbara County's Water Sources

- Surface Water Reservoirs
- Groundwater
- State Water Project
- Recycling
- Cloud Seeding
- Desalination
- Conservation (Demand Management)

Santa Barbara County Reservoirs



Surface Reservoirs

- Cachuma Reservoir
186,000 AF capacity
- Gibraltar Reservoir
5,303 AF capacity
- Jameson Reservoir
5,290 AF capacity
- Twitchell Reservoir
198,340 AF capacity

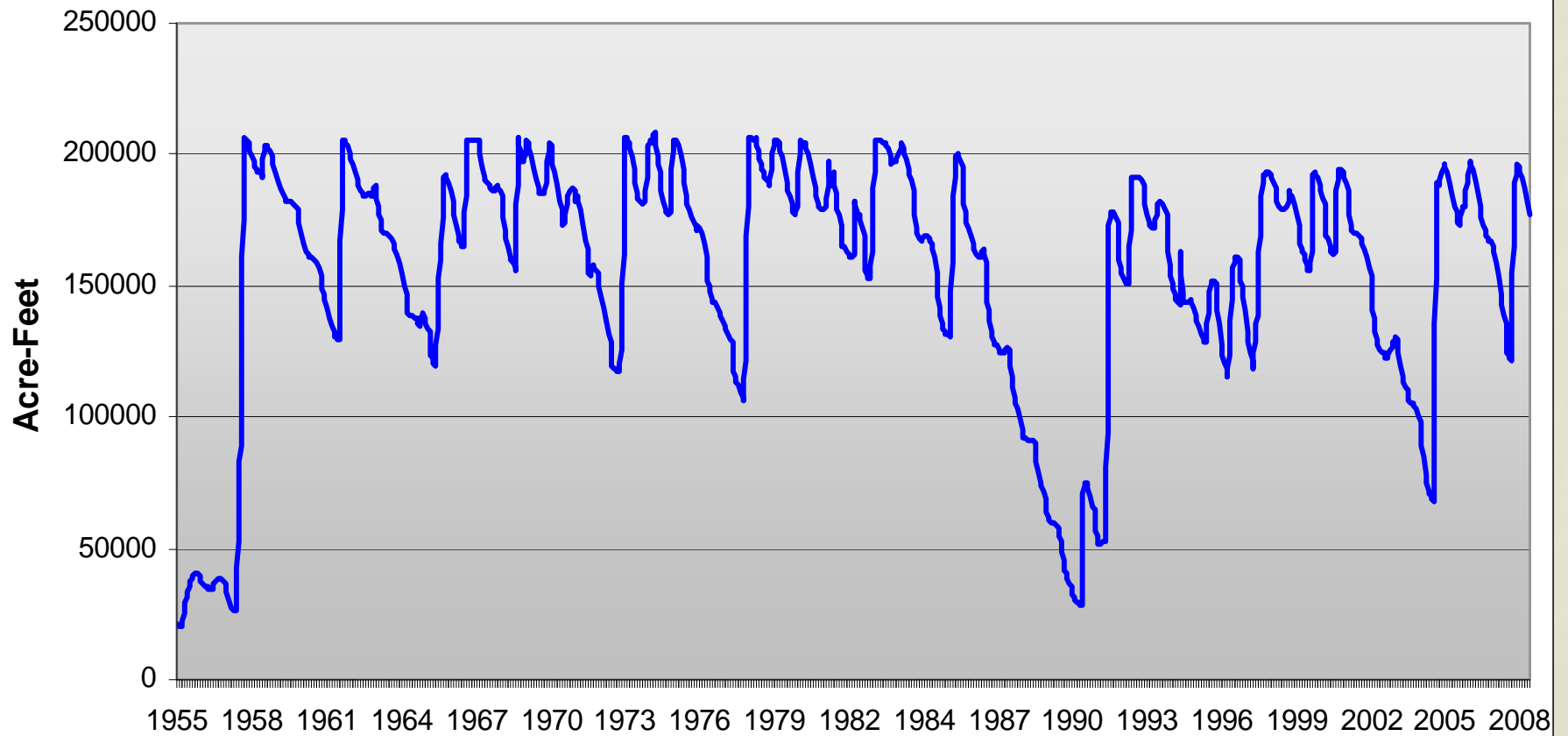
Current Reservoir Storage

(As of October 20, 2008)

- Cachuma: 169,973 AF = 91% Capacity
- Gibraltar: 3,645 AF = 70% Capacity
- Jameson: 4,159 AF = 79% Capacity

Cachuma Reservoir - Historical Storage Levels

1955 to 2008



Twitchell Reservoir

Over 20,000 AF of groundwater recharge in 2008.



Ground Water Basins of Santa Barbara County



Prepared By: Eric Corso
Prepared For: County of Santa Barbara, Water Resources
Date: December 5, 2005
Data Sources: County of Santa Barbara, US Census Bureau
Projection: State Plane, Zone 5

Ground-Water Basins

- Santa Maria
- Cuyama
- San Antonio
- Santa Ynez drainage
 - Uplands, Riparian, Lompoc
- South-coast drainages
 - Goleta, Santa Barbara, Montecito, Carpinteria, Foothill

Groundwater of SB County

- Many basins in balance or nearly in balance
 - Adjudication of Some Basins
- Cuyama GW Basin
 - Significant Overdraft
 - Detailed Study Underway

State Water Project

Santa Barbara County



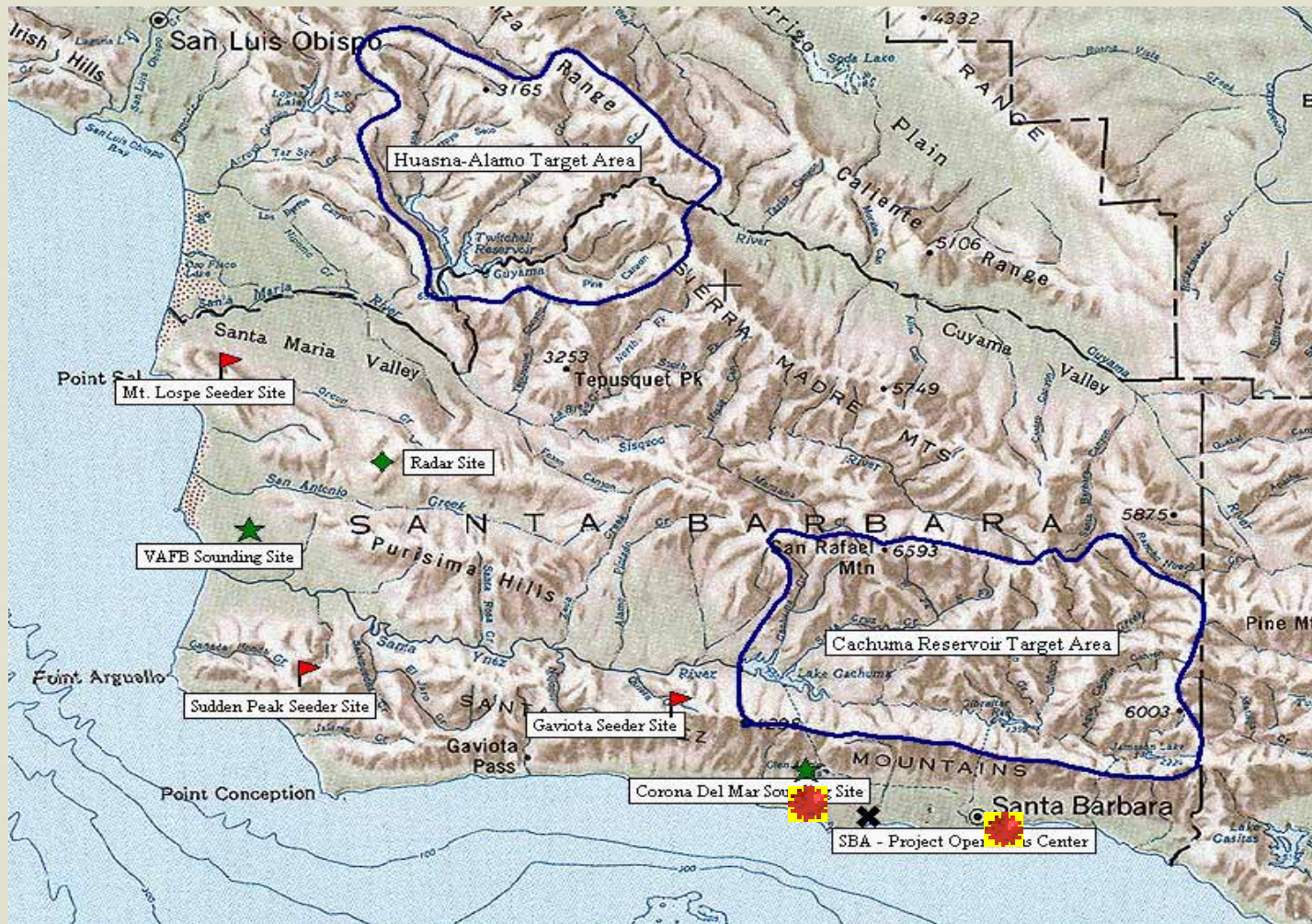
2008 State Water Outlook

- Statewide:
 - 2008: Expected delivery of 35% of contracted amount
- Local:
 - 2008: Expected delivery of 60% of contracted amount due to supplemental programs and exchanges

Recycling of Waste Water

- Beneficial uses include:
 - Groundwater Recharge (Buellton, City of Santa Maria, Solvang)
 - Landscape Irrigation (Carpinteria, City of SB)
 - Pasture Irrigation (Guadalupe, Laguna, City of SM)
 - Dust Control (Lompoc)

Cloudseeding Program:



Printed from TOPO! ©1997 Wildflower Productions (www.topo.com)

Target Areas

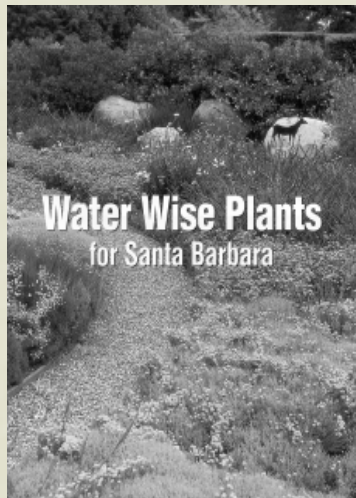
Santa Barbara County Regional Water Efficiency Program



A joint program with water purveyors across the County to ensure that our community uses water wisely.

Regional Water Efficiency Program...

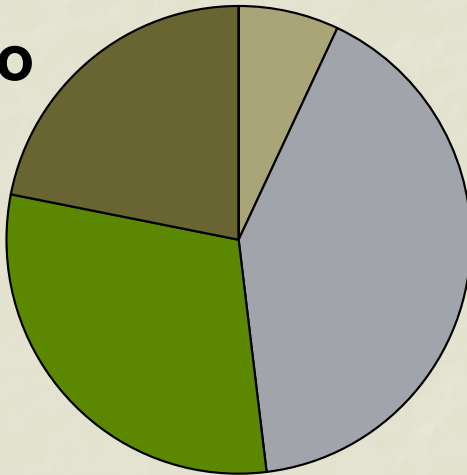
- Public Info & outreach: *website, PSAs, events, etc.*
- Landscape: *training, TV show, eval'ns, technology, etc*
- Commercial & Institutional: *fixtures, rebates, etc*
- Classroom Education: *K-8; HS video contest; etc*
- Promoting CA Urban W/C Council's BMPs
- Ag Water Efficiency Program w/ CRCDC



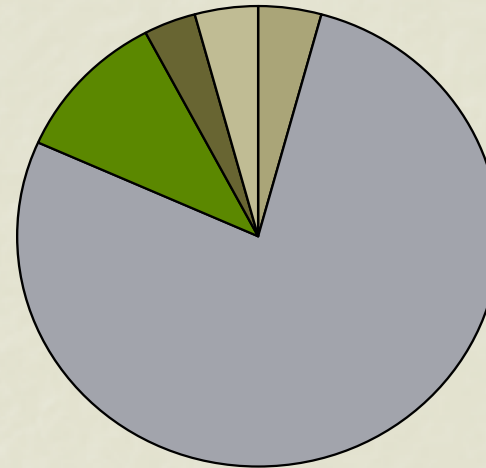
Santa Barbara County Demand and Consumption

Water Sources for South Coast, 2007

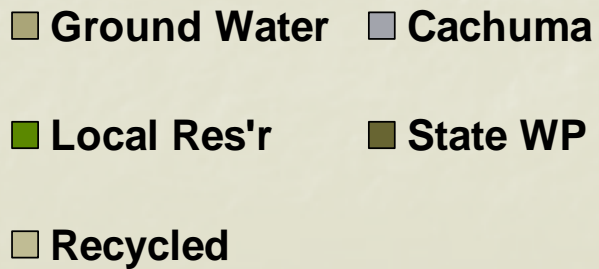
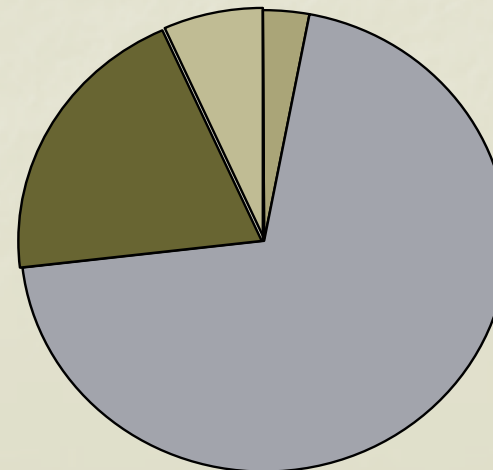
Montecito



S. Barbara

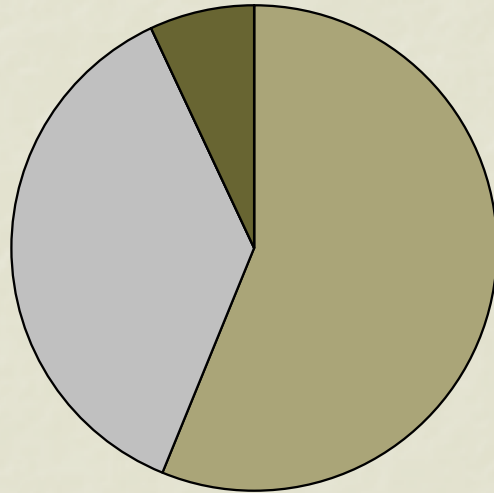


Goleta

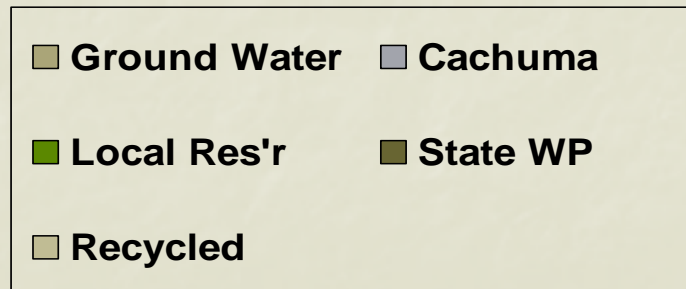
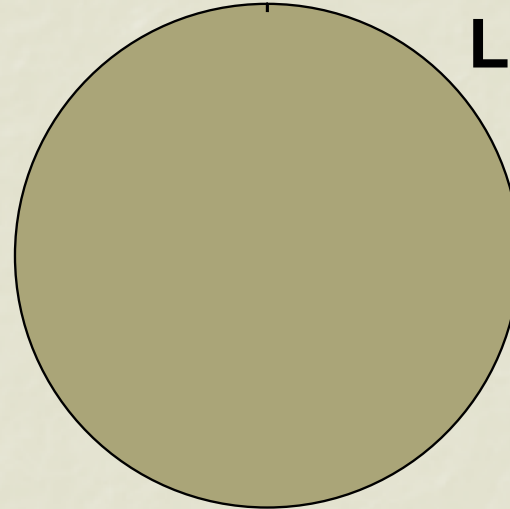


Water Sources in Santa Ynez & Lompoc, 2007

**S. Ynez
ID#1**



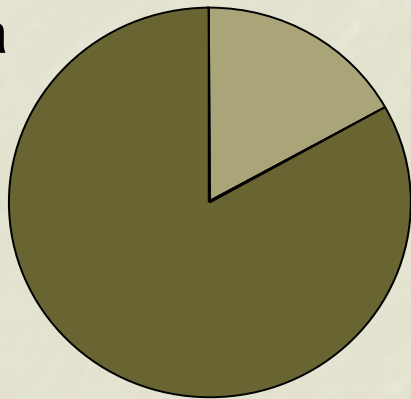
Lompoc



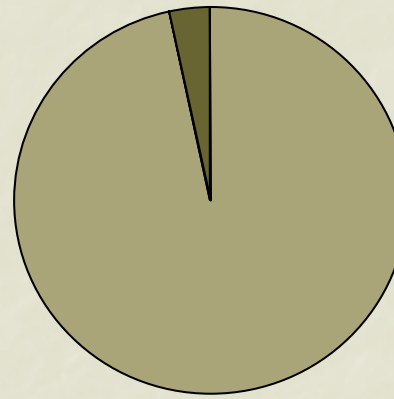
Note: Cachuma release water recharges some groundwater

Water Sources in S. Maria area, 2007

S. Maria



**Orcutt:
Golden State W Co**

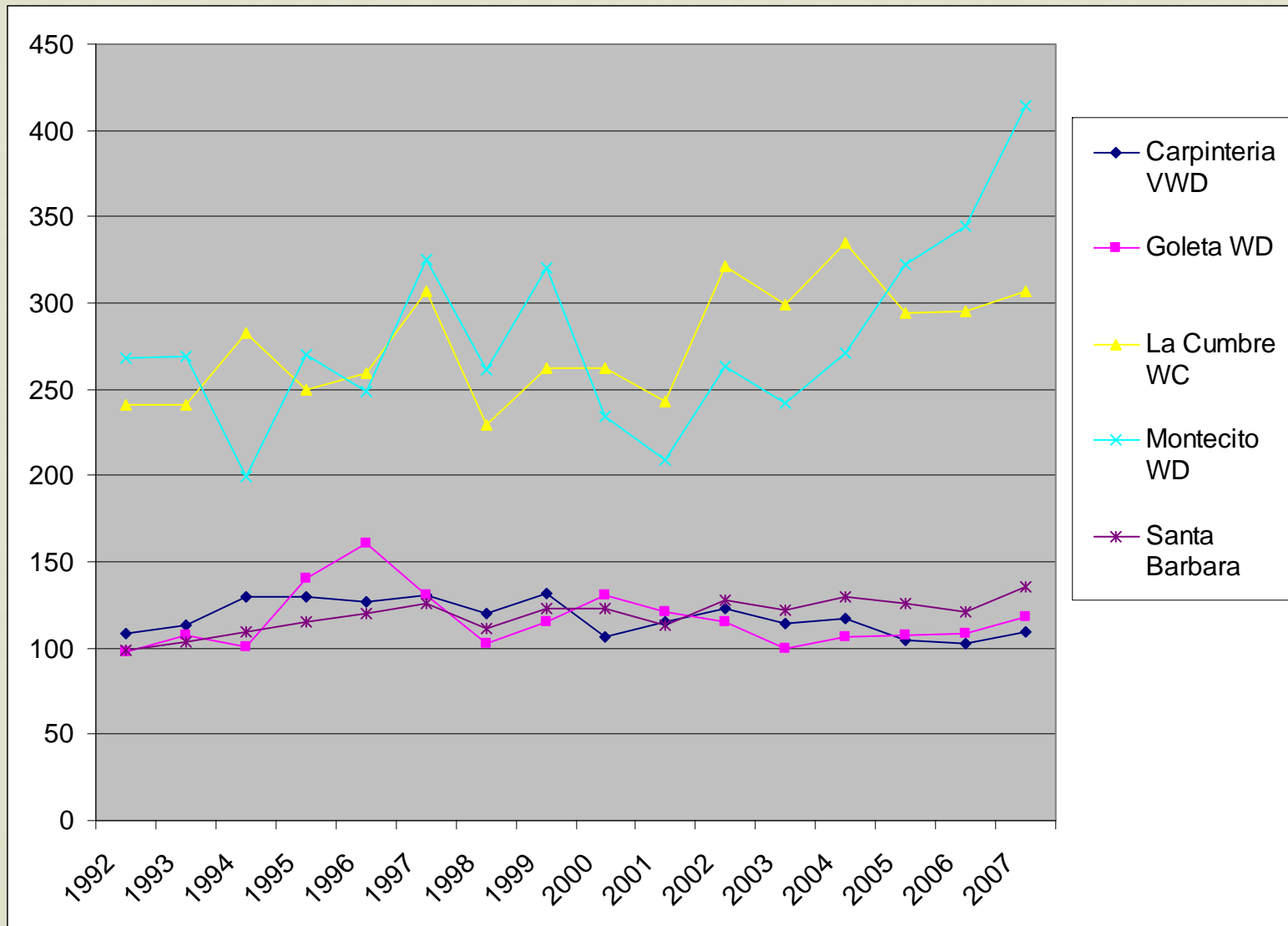


- | | |
|--------------|----------|
| Ground Water | Cachuma |
| Local Res'r | State WP |
| Recycled | |

Note 1: Twitchell Reservoir recharges GW in SM basin.

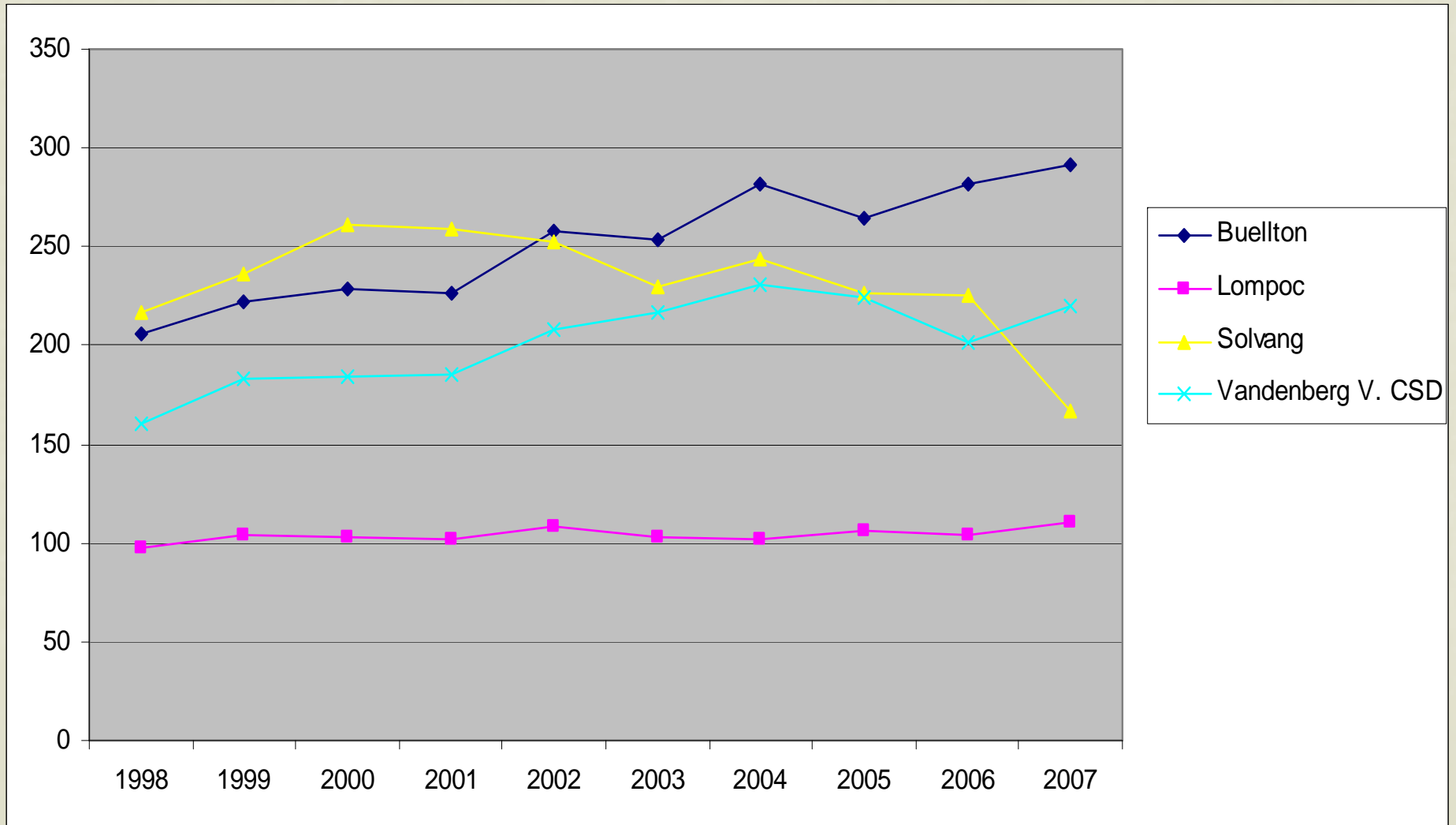
Note 2: Laguna Sanitation recycles wastewater to pastures

So. Coast Water Production gals/per capita/day



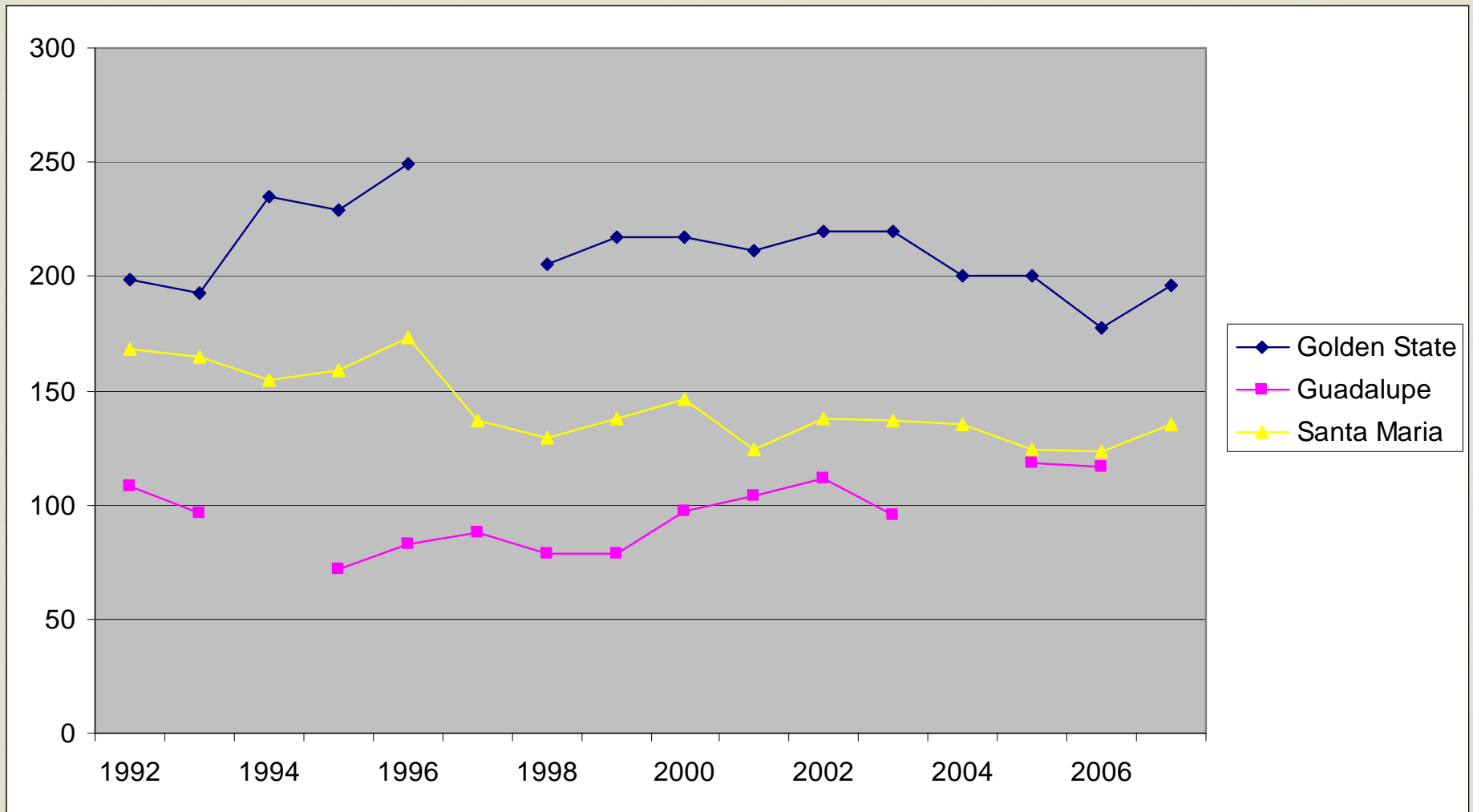
Santa Ynez Valley Water Production

gals/per capita/day



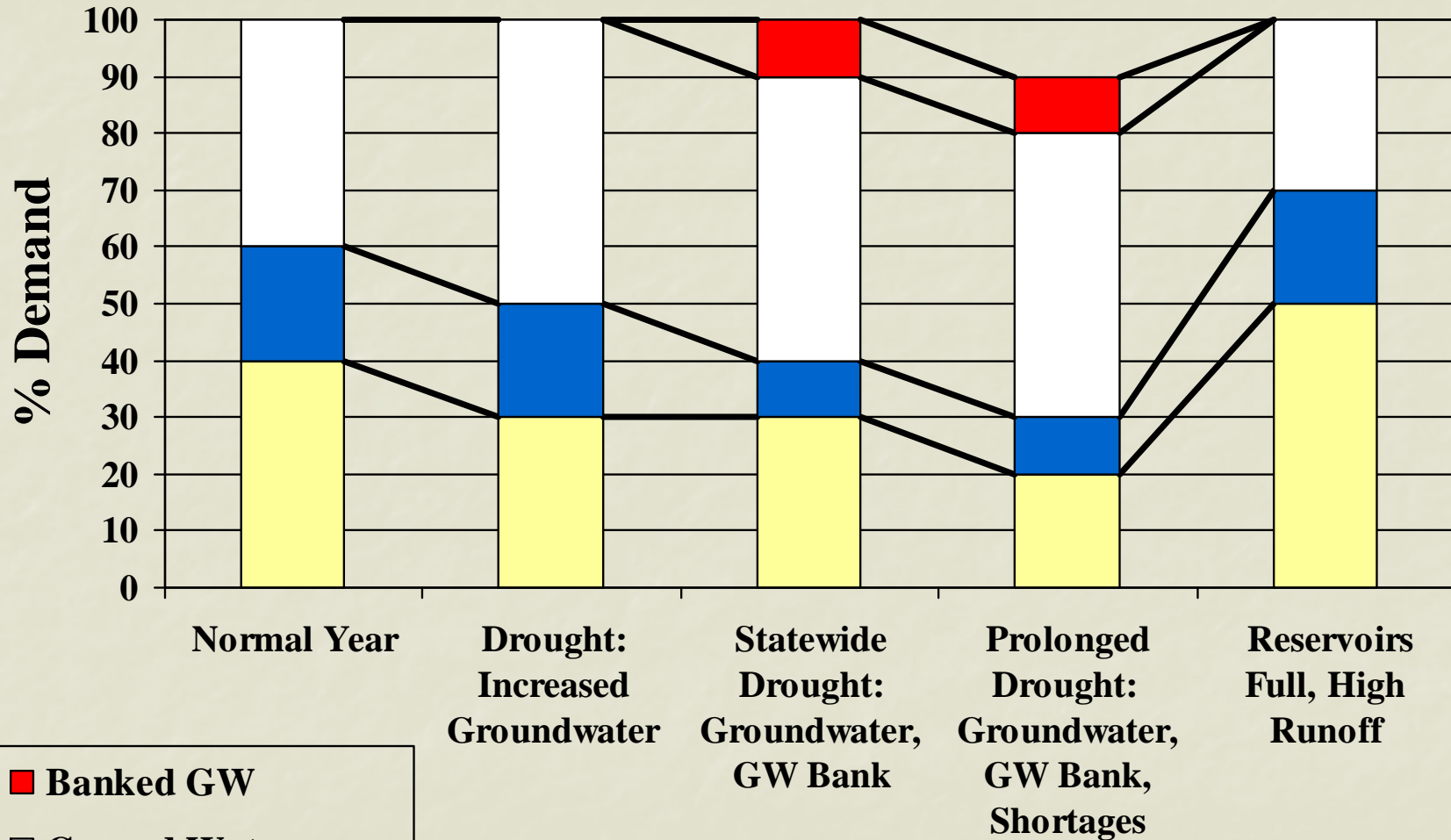
Water Production in Santa Maria Valley

gals/per capita/day



Water Supply / Demand Dynamics

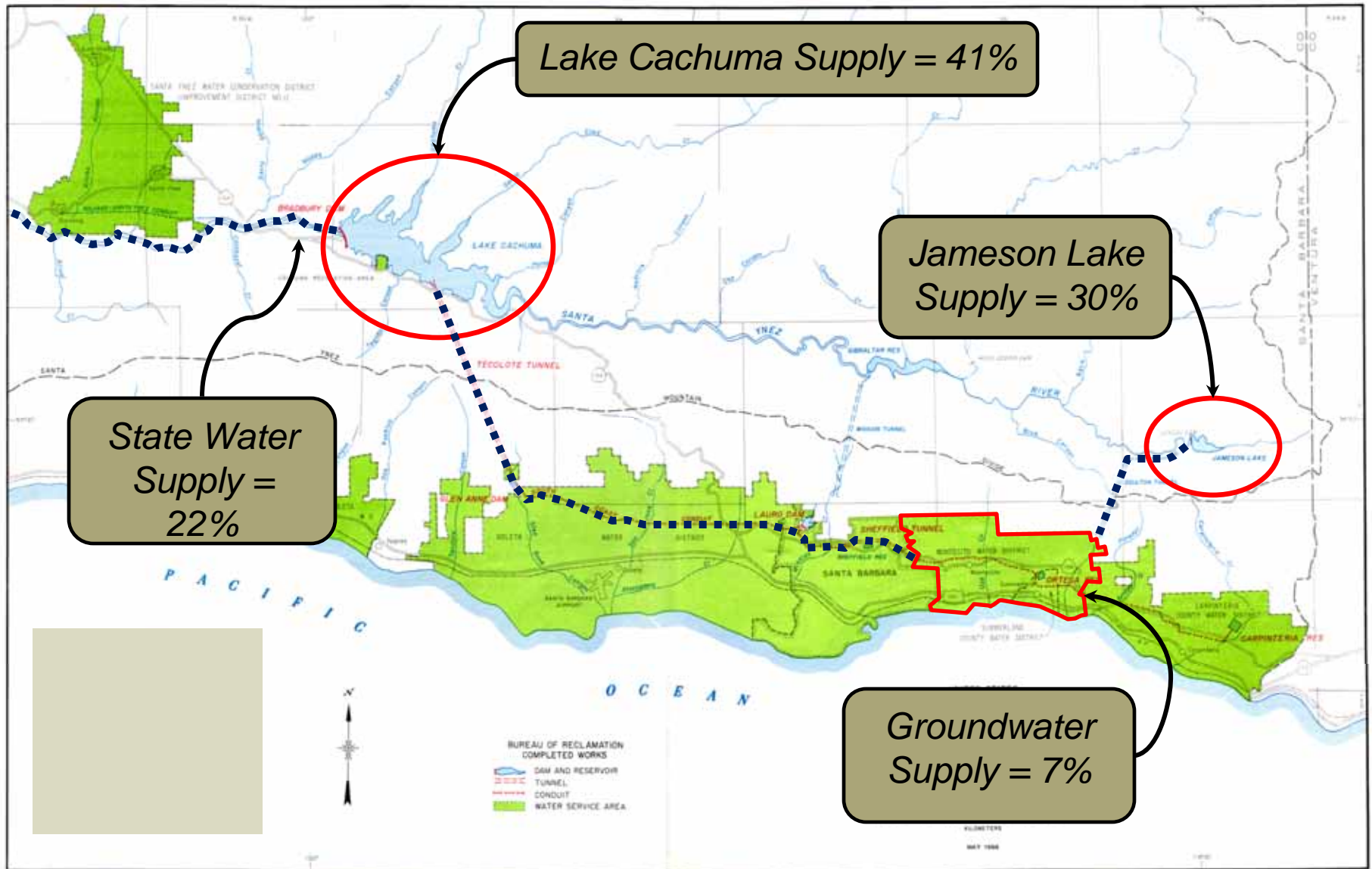
Local Conjunctive Use



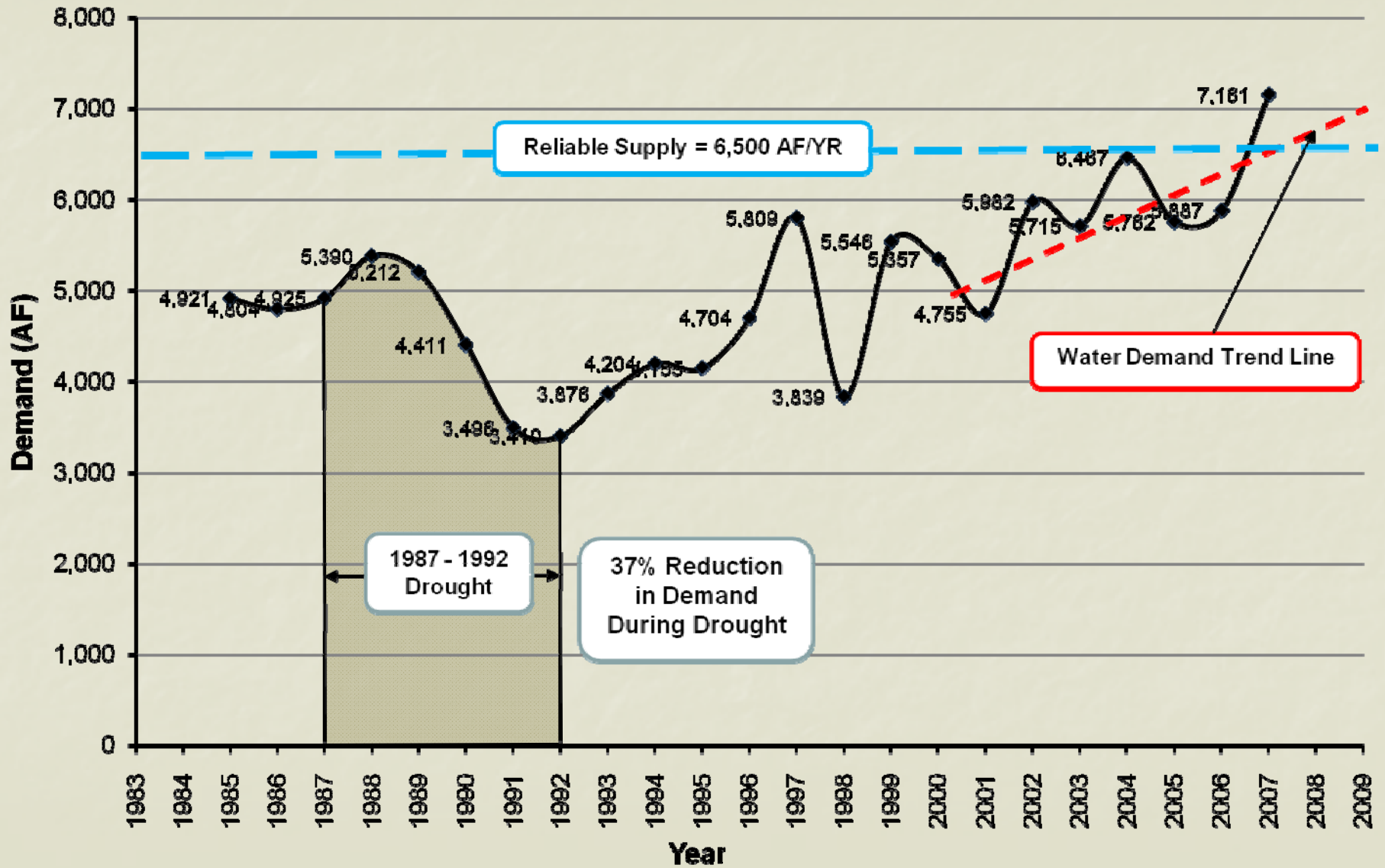
- Banked GW
- Ground Water
- State Water Project
- Cachuma Project

Years with Different Hydrologic Conditions

Purveyor Perspective Montecito



Montecito Water District Water Demand





QUESTIONS?