

Santa Barbara County Flood Control and Water Conservation District



Atascadero Creek at Hospital Creek
K-Rails being placed

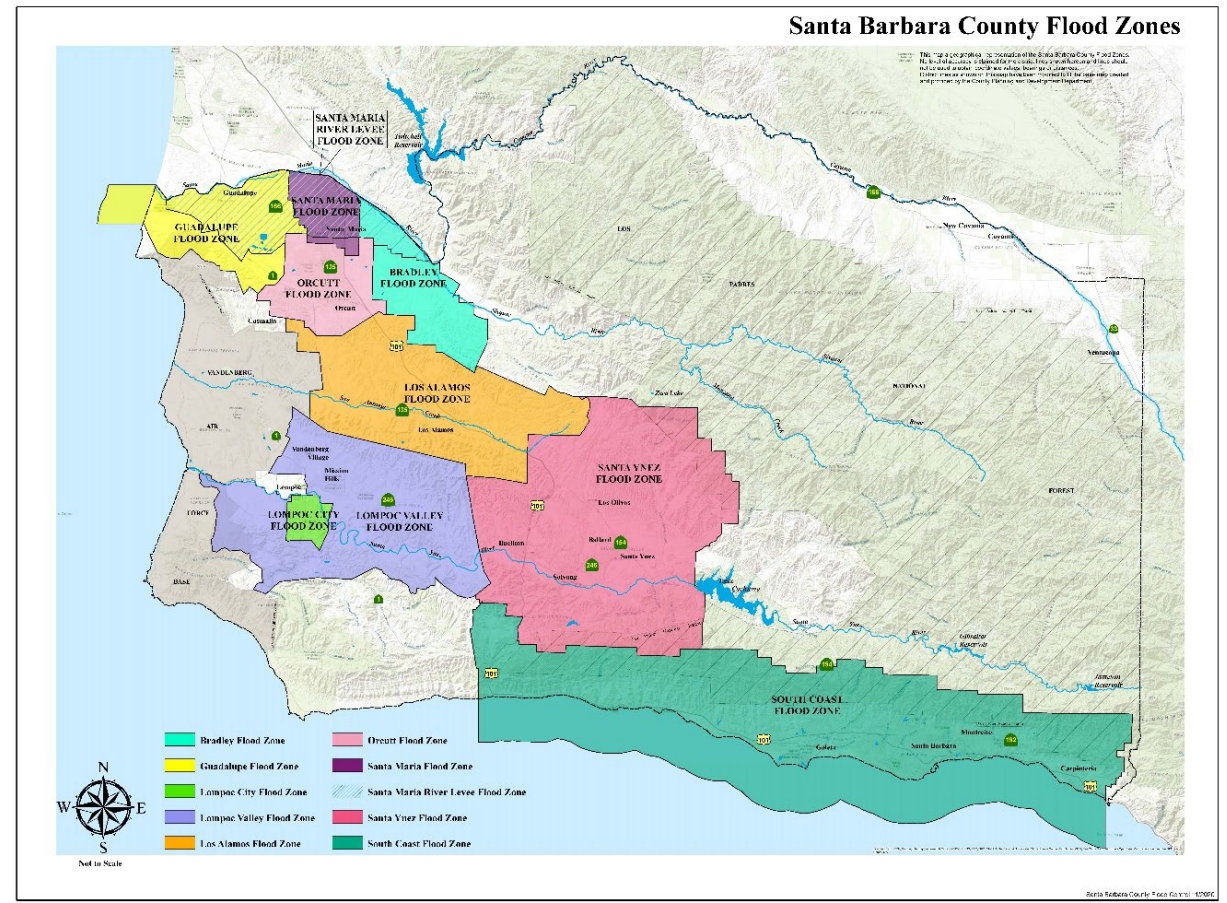


Atascadero Creek at Hospital Creek
during the February 4, 2024 Storm

Benefit Assessment Program FY 2024-25
Board of Directors Meeting
June 25, 2024

Flood Control Benefit Assessment Program

- Voter Approved Assessments
- Assessment Approved with an Annual CPI Adjustment to Preserve Funding Levels
- Proposed Increase 4.03% for FY 2024-25



Proposed Benefit Assessment Rates

FY 2024-25

	Group A		Group B		Group C		Group D		Group E	
	FY 2024-25		FY 2024-25		FY 2024-25		FY 2024-25		FY 2024-25	
					\$/Ac ¹					
	\$/Ac	Min \$ Assmt	\$/Ac	Min \$ Assmt	(over 0.3 Ac only)	Min \$ Assmt	\$/Ac	Min \$ Assmt	\$/Ac	Min \$ Assmt
Bradley	\$55.57	\$16.68	\$41.67	\$12.50	\$0.00	\$8.39	\$2.08	\$0.61	\$0.20	\$0.06
Guadalupe	\$29.42	\$8.82	\$22.07	\$6.64	\$0.00	\$4.43	\$1.11	\$0.34	\$0.11	\$0.03
Lompoc City	\$124.13	\$37.24	\$93.08	\$27.91	\$0.00	\$18.63	\$4.67	\$1.40	\$0.44	\$0.13
Lompoc Valley	\$48.48	\$14.53	\$36.33	\$10.90	\$0.00	\$7.25	\$1.81	\$0.54	\$0.19	\$0.04
Los Alamos	\$61.64	\$18.50	\$46.24	\$13.86	\$0.00	\$9.24	\$2.31	\$0.68	\$0.23	\$0.06
Orcutt	\$36.94	\$11.09	\$27.70	\$8.32	\$0.00	\$5.55	\$1.38	\$0.41	\$0.14	\$0.04
Santa Maria	\$118.18	\$35.46	\$88.64	\$26.66	\$0.00	\$17.72	\$4.44	\$1.34	\$0.41	\$0.13
SMR Levee	\$31.89	\$9.57	\$23.91	\$7.18	\$0.00	\$4.80	\$1.18	\$0.37	\$0.13	\$0.03
Santa Ynez	\$27.23	\$8.17	\$20.42	\$6.12	\$0.00	\$4.07	\$1.01	\$0.31	\$0.11	\$0.03
South Coast	\$207.45	\$62.24	\$155.58	\$46.67	\$0.00	\$31.12	\$7.78	\$2.34	\$0.77	\$0.23

GROUP A - Commercial Industrial.

GROUP B - Institutions and Apartments

GROUP C - Single-family residential and small multiple (2 to 4 units), cemeteries.

GROUP D - Irrigated agriculture, golf courses.

GROUP E - Dry farmed agricultural, vacant ground.

Note: A \$1.00 per parcel assessment is added per Resolution No. 82-209 pursuant to Government Code Sections 29304 and 51800.

Minimum assessment included up to 0.3-acre lot. Any single family "Group C" LOT AREA over 0.3 acres will be additionally charged in accordance with the schedule for "Group D."

2023-24 Storms Financial Impacts

Fund	Flood Zone	7/1/2022 Beginning Fund Balance	4/1/24 Fund Balance	Reduction	YOY % Change
2430	Bradley	594,660	625,952		5%
2460	Guadalupe	1,296,072	1,396,763		8%
2470	Lompoc City	7,415,995	8,036,421		8%
2480	Lompoc Valley	2,725,417	2,674,858	- 50,559	-2%
2500	Los Alamos	1,820,915	1,895,042		4%
2510	Orcutt	4,965,454	5,278,631		6%
2560	Santa Maria	11,964,215	13,555,013		13%
2570	SM River Levee Maint Zone	1,180,717	1,279,131		8%
2590	Santa Ynez	2,391,095	2,603,464		9%
2610	South Coast	25,375,939	13,315,652	- 12,060,287	-48%

Recommendations



- Approval of actions a, b, c, and d
- First Reading
- Return July 9, 2024 for Second Reading and Final Adoption (Admin Agenda)