

# Attachment E

## RESOLUTION OF THE BOARD OF SUPERVISORS COUNTY OF SANTA BARBARA, STATE OF CALIFORNIA

IN THE MATTER OF RECOMMENDING THAT THE ) RESOLUTION NO. 09-\_\_\_\_\_  
BOARD OF SUPERVISORS ADOPT SPECIFIC )  
AMENDMENTS TO THE LAND USE ELEMENT ) Case No: 09GPA-00000-00001  
OF THE SANTA BARBARA COUNTY )  
COMPREHENSIVE PLAN BY ADOPTION OF THE )  
SANTA YNEZ VALLEY COMMUNITY PLAN )

### WITH REFERENCE TO THE FOLLOWING:

- A. On December 20, 1980, by Resolution No. 80-566, the Board of Supervisors of the County of Santa Barbara adopted the Comprehensive Plan for the County of Santa Barbara.
- B. On September 26, 2006, the Board of Supervisors adopted Resolution No. 06-423 to initiate the Preliminary Draft Santa Ynez Valley Community Plan as a “project” for environmental review.
- C. In June 2008, pursuant to the California Environmental Quality Act (CEQA), a Draft Environmental Impact Report was prepared for the Santa Ynez Valley Community Plan and circulated to the appropriate state agencies and the public for review and comment.
- D. On July 9, 2008 a public hearing was conducted to solicit public comment on the Draft Environmental Impact Report.
- E. In March 2009, a Final Environmental Impact Report was prepared and presented to the Planning Commission.
- F. The Board of Supervisors now finds that it is in the interest of the orderly development of the County and important to the preservation of the health, safety, and general welfare of the residents of the County to:
  - 1. Adopt the Santa Ynez Valley Community Plan, dated October 6, 2009, with any changes adopted by the Board of Supervisors, as an amendment to the Land Use Element of the Comprehensive Plan.
  - 2. Amend the County Land Use Element as follows:
    - a. Amend “Section V Area/Community Goals within the Santa Ynez Valley Planning Area” section by deleting in its entirety all text in the planning area and replacing it with the following:

In 2009, the County adopted a Community Plan for the Santa Ynez Valley area (see the “Santa Ynez Valley Community Plan Area Land Use Map” for the Planning Area boundaries). This Plan updates the Comprehensive Plan and provides policy direction for issues and development trends specific to the Plan area. This update is necessary to manage current conditions, facilitate proper planning and accurately

reflect prevailing vision and objectives of the areas residents. The Community Plan provides the general public, land owners and decision makers with a framework for planning future development in the region. The Community Plan establishes land use designations and zone districts and includes development standards to guide future development. In addition, the Community Plan contains a number of policies as well as actions which implement the goals and objectives of the Plan.

In addition to the applicable Comprehensive Plan polices, the goals, objectives, polices and actions of the Santa Ynez Valley Community Plan also apply. The Santa Ynez Valley Community Plan is drafted to apply to the specific geographical setting of the Santa Ynez Valley and thus its provisions shall be interpreted to be more site specific than General Plan provisions on the same subject matter.

See the “Community Plans” Section of this Element for the complete Santa Ynez Valley Community Plan

- b. Amend the “Land Use Holding Capacity,” and “Holding Capacity by Planning Area” sections by deleting “Figure J-Santa Ynez Valley Planning Area” and “Table 15.a: Santa Ynez Valley-Area Residential Land Use Distribution” and “Table 15.b: Santa Ynez Valley Acres of Developed and Undeveloped Lands”.

- c. Amend “Land Use Element Maps” section to add text that reads:

Santa Ynez Valley Community Plan  
Land Use Designations Map

- d. Amend “Community Plans” Section to add the following text:

Santa Ynez Valley Community Plan – Board of Supervisors Resolutions 09-GPA-00000-00001 (Land Use Element), (Date of Adoption X).

- e. Amend the definition of an EDNRN in the “Land Use Definitions” Section as follows:

Existing Developed Rural Neighborhood – A neighborhood area that has developed historically with lots smaller than those found in the surrounding Rural or Inner Rural lands. The purpose of the neighborhood boundary is to keep pockets of rural residential development from expanding onto adjacent agricultural lands. Within the Rural Neighborhood boundary, infilling of parcels at densities specified on the land use plan maps is permitted. NOTE: Areas shown on the County Comprehensive Plan Map (Comp-1, 111. = 8000’) as existing neighborhoods in rural areas shall retain existing zoning unless allowed by a Community Plan.

3. Amend the County Comprehensive Plan Land Use Element maps as follows:

- a. Adopt by reference the map titled “Santa Ynez Valley Community Plan Land Use Designations” (Exhibit A) which amends the land use designations within the Santa Ynez Valley Community Plan Area;

- b. Adopt by reference the map titled “Santa Ynez Valley Community Plan Parks, Recreation & Trails” (Exhibit C) which amends the Parks, Recreation & Trails within the Santa Ynez Valley Community Plan Area;
  - c. Amend the existing “Santa Barbara County Comprehensive Plan Land Use Element” map (COMP-1), making minor indexing and referencing revisions;
  - d. Amend the existing “Santa Ynez Valley Rural Region, Land Use Designations” map, amending the land use designations in the Rural Area as adopted in Exhibit A;
  - e. Amend the existing “Santa Barbara County Parks, Recreation & Trails” (PRT-1) map to include the portions of the PRT-4 map which are not included in the Santa Ynez Valley Community Plan and to make minor indexing and referencing revisions;
  - f. Retire the “Santa Barbara County Parks, Recreation & Trails Santa Ynez Valley Area” (PRT-4) map;
  - g. Retire the “Land Use Element Santa Ynez Valley Area-Urban Areas”(COMP-4) map.
- G. Public officials and agencies, California Native American Indian tribes, civic organizations, and citizens have been consulted on and have advised the Planning Commission on the proposed amendments in a duly noticed public hearing pursuant to Sections 65351 and 65353 of the Government Code.
- H. The Planning Commission has held a duly noticed public hearing, as required by Section 65353 of the Government Code, on the proposed amendments, at which hearing the amendments were explained and comments invited from the persons in attendance.
- I. The Planning Commission of the County of Santa Barbara, after holding duly noticed public hearings on the above described item, has endorsed and transmitted to the Board of Supervisors said recommended change by resolution pursuant to Government Code Section 65354.

NOW, THEREFORE, IT IS HEREBY RESOLVED as follows:

- 1. The above recitations are true and correct.
- 2. Pursuant to the provisions of Section 65356 of the Government Code, the above described change is hereby adopted as an amendment to the Land Use Element of the Santa Barbara County Comprehensive General Plan.
- 3. The Chair and the Clerk of the Board are hereby authorized and directed to sign and certify all documents and other materials in accordance with this Resolution to reflect the above described action by the Board.

PASSED, APPROVED, AND ADOPTED by the Board of Supervisors of the County of Santa Barbara, State of California, this \_\_\_\_\_ day of \_\_\_\_\_, 2009, by the following vote:

AYES:

NOES:

ABSENT:

\_\_\_\_\_  
Chair of the Board of Supervisors  
County of Santa Barbara

ATTEST:

Michael F. Brown  
Clerk of the Board of Supervisors

APPROVED AS TO FORM:  
DENNIS A. MARSHALL  
County Counsel

By: \_\_\_\_\_  
Deputy Clerk

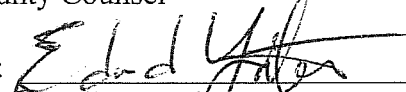






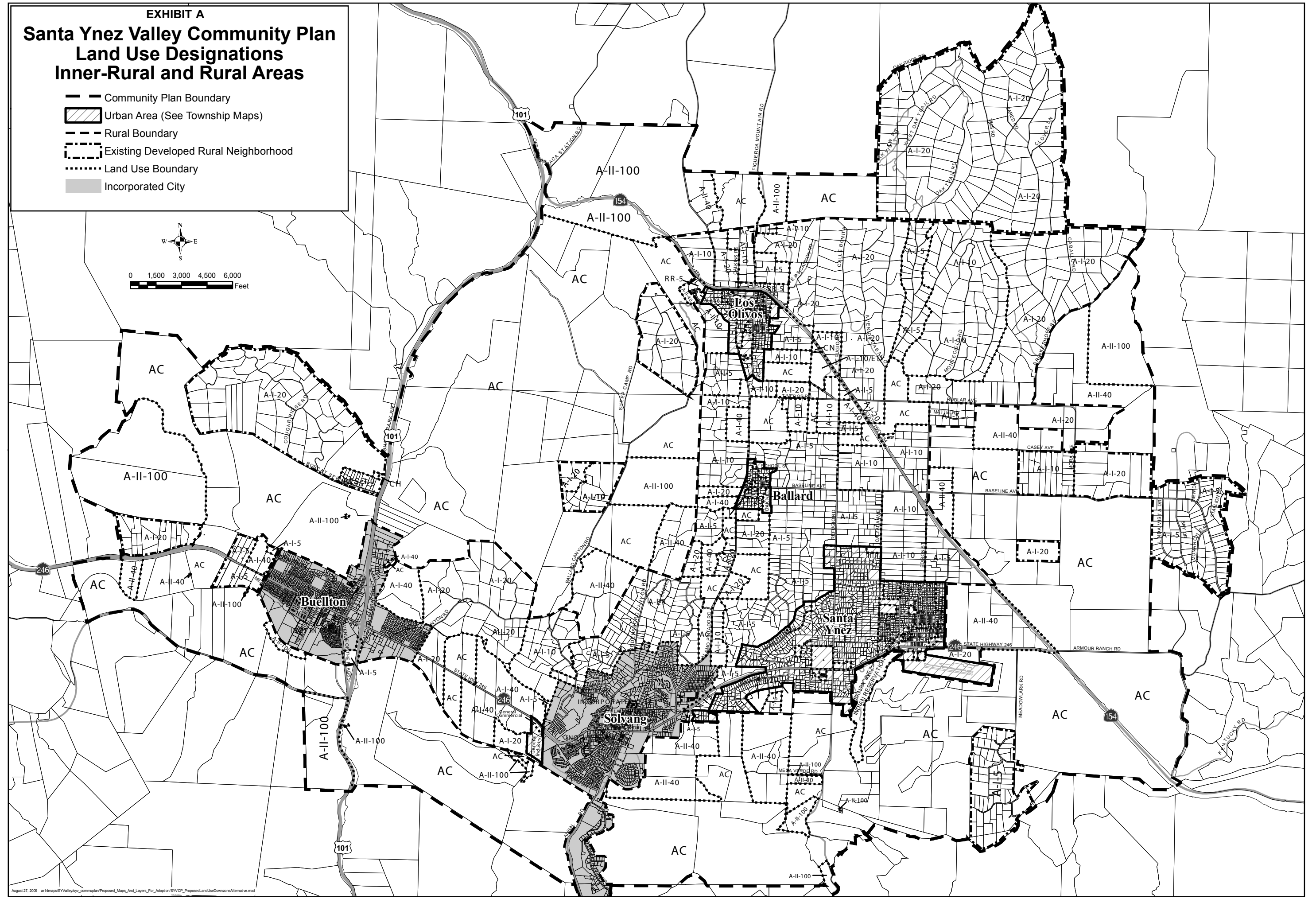
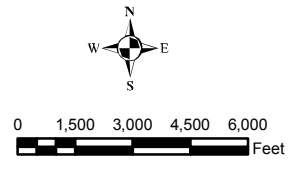
By:   
Deputy County Counsel

Exhibit A Santa Ynez Valley Community Plan Land Use Designations Downzone Alternative map

Exhibit B Santa Ynez Valley Community Plan Parks, Recreation & Trails map

**EXHIBIT A**  
**Santa Ynez Valley Community Plan**  
**Land Use Designations**  
**Inner-Rural and Rural Areas**

-  Community Plan Boundary
-  Urban Area (See Township Maps)
-  Rural Boundary
-  Existing Developed Rural Neighborhood
-  Land Use Boundary
-  Incorporated City



**EXHIBIT B**  
**Santa Ynez Valley Community Plan**  
**Parks, Recreation & Trails**

- Existing Off-Road Trail
- Proposed Off-Road Trail
- Existing On-Road Trail
- Proposed On-Road Trail
- Existing Park
- Proposed Park
- Community Plan Boundary
- Incorporated City (Not in Plan)



0 1,500 3,000 4,500 6,000  
 Feet

