

Eastern Goleta Valley Community Plan - Vegetation Mapping by AIS, Inc. Based on National Vegetation Classification Standard (Group Level)

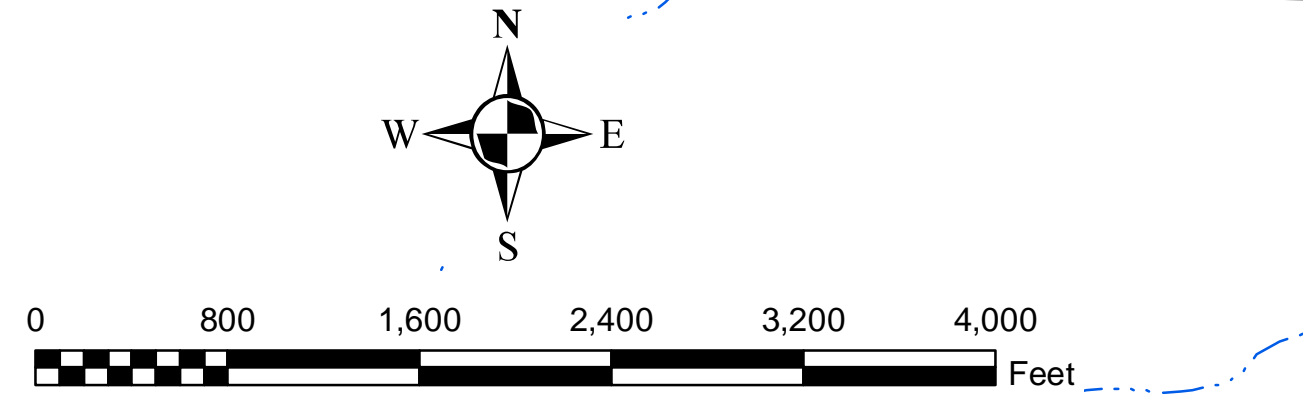
ATTACHMENT 6

Vegetation Mapping by AIS:

- Southwestern North American Riparian Evergreen and Deciduous Woodland Group
- Southwestern North American Riparian/Wash Scrub Group
- Vancouverian Riparian Deciduous Forest Group
- Arid West Freshwater Emergent Marsh Group
- California Warm Temperate Marsh/Seep Group
- Central California Coast Ranges Cliff and Canyon Group
- California Broadleaf Forest and Woodland Group
- California Evergreen Coniferous Forest and Woodland Group
- Upland Vancouverian Mixed Woodland and Forest Group
- California Coastal Evergreen Bluff and Dune Scrub Group
- Central and South Coastal Californian Coastal Sage Scrub Group
- California Coastal Scrub Macrogroup
- Central and South Coastal California Seral Scrub Group
- Vancouverian Coastal Deciduous Scrub Group
- California Xeric Chaparral Group
- California Maritime Chaparral Group
- California Mesic Chaparral Group
- California Pre-Montane Chaparral Group
- California Chaparral Macrogroup
- Introduced North American Mediterranean Woodland and Forest Group
- Exotic Trees
- Naturalized Non-Native Mediterranean Scrub Group
- Mediterranean California Naturalized Annual and Perennial Grassland Group
- Water
- Woody Agriculture (Orchards, Vineyards)
- Non-Woody Row and Field Agriculture
- Agriculture (w/in the current 5-year cycle within cropland; includes nurseries and equestrian use)
- Anthropogenic areas of little or no vegetation
- Built-up & Urban Disturbance

Map Legend:

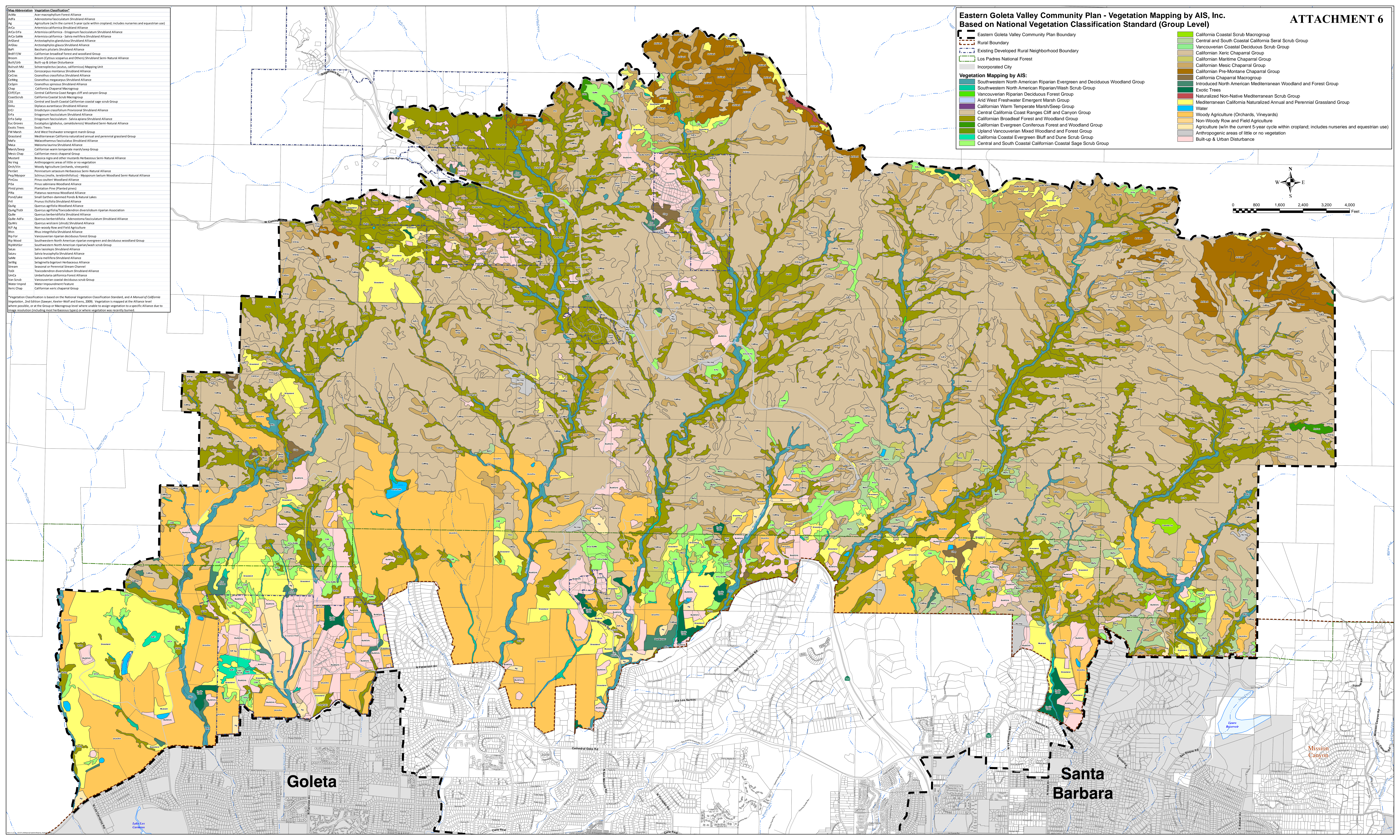
- Eastern Goleta Valley Community Plan Boundary
- Rural Boundary
- Existing Developed Rural Neighborhood Boundary
- Los Padres National Forest
- Incorporated City



Map Abbreviation | **Vegetation Classification**

Adfvs	Acer macrophyllum forest Alliance
Adfvs	Adenostoma fasciculatum Shrubland Alliance
Ag	Agriculture (w/in the current 5-year cycle within cropland; includes nurseries and equestrian use)
Arcs	Artemisia californica Shrubland Alliance
Arcs-Erfa	Artemisia californica - Eriogonum fasciculatum Shrubland Alliance
Arcs-SaMe	Artemisia californica - Salvia mellifera Shrubland Alliance
Arcland	Arctostaphylos glandulosa Shrubland Alliance
Artlau	Arctostaphylos glauca Shrubland Alliance
BfRt	Baccharis pilularis Shrubland Alliance
BfRt F/W	California broadleaf forest and woodland Group
Brom	Bromus (Cytisus scoparius and Others) Shrubland Semi-Natural Alliance
Burn/Uln	Burn up & Urban Disturbance
Burn/MU	Schoenoplectus (acutus, californicus) Mapping Unit
Ceds	Cercocarpus montanus Shrubland Alliance
Ceds	Ceanothus laevis Shrubland Alliance
CeMag	Ceanothus megacarpus Shrubland Alliance
Coleam	Ceanothus ligustrinus Shrubland Alliance
Chap	California Chaparral Macrogroup
Cliff/Cyn	Central California Coast Ranges cliff and canyon Group
Coast/Scrub	California Coastal Scrub Macrogroup
CS	Central and South Coastal Californian coastal sage scrub Group
Dipw	Diplopis aurantiaca Shrubland Alliance
EFCS	Eriogonum crassifolium Proserpinaca Shrubland Alliance
ErfA	Eriogonum fasciculatum Shrubland Alliance
ErfA-SaMe	Eriogonum fasciculatum - Salvia mellifera Shrubland Alliance
Euc Groves	Eucalyptus (globulus, camaldulensis) Woodland Semi-Natural Alliance
Euc/Trees	Eucalyptus Trees
FW Marsh	Arid West freshwater emergent marsh Group
Grassland	Mediterranean California naturalized annual and perennial grassland Group
Meia	Mycobolobolus fasciculatus Shrubland Alliance
Mesic/Seep	Mycobolobolus fasciculatus Shrubland Alliance
Mesic/Chap	California mesic chaparral Group
Mustard	Brassica nigra and other mustards Herbaceous Semi-Natural Alliance
No Veg	Anthropogenic areas of little or no vegetation
Or/W	Woody Agriculture (orchards, vineyards)
Penlet	Penstemon setaceus Herbaceous Semi-Natural Alliance
Penlet	Penstemon setaceus Herbaceous Semi-Natural Alliance
Penlet	Penstemon setaceus Herbaceous Semi-Natural Alliance
Penlet	Penstemon setaceus Herbaceous Semi-Natural Alliance
Penlet	Penstemon setaceus Herbaceous Semi-Natural Alliance

Vegetation Classification is based on the National Vegetation Classification Standard, and a Manual of California Vegetation, 2nd Edition (Davis, Keeney-Walk and Evans, 2009). Vegetation is mapped at the alliance level, where possible, or at the Group or Macrogroup level where unable to assign vegetation to a specific Alliance due to image resolution (including most herbaceous types) or where vegetation was recently burned.



Goleta

Santa Barbara

Mission Canyon