

# **ATTACHMENT 2**



# Memorandum



DATE: April 29, 2014

TO: Alice McCurdy, Deputy Director  
South County Development Review Division  
Planning & Development Department

FROM: Don Grady (568-3065)  
Manager, Real Property  
General Services Department (On behalf of the County of Santa Barbara, and on behalf of the Board of Supervisors acting as the Successor Agency to the Santa Barbara County Redevelopment Agency)

SUBJECT: Government Code Section 65402 - Conformity with County's Comprehensive Plan  
Project: Transfer of Three Properties from Successor Agency to Former Santa Barbara County Redevelopment Agency to the County of Santa Barbara.

---

In accordance with Government Code Section 65402, the County's General Services Department, on behalf of the County of Santa Barbara, and on behalf of the Board of Supervisors acting as the Successor Agency to the Santa Barbara County Redevelopment Agency, is requesting a determination as to whether the transfer of ownership of the three parcels of land known as County Assessor Parcel Numbers, 075-163-014, 075-163-017, and 075-111-015 (Properties), from the Successor Agency of the Redevelopment Agency to the County, is consistent with the Isla Vista Master Plan, the applicable part of the Comprehensive Plan of the County of Santa Barbara.

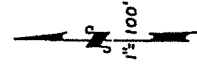
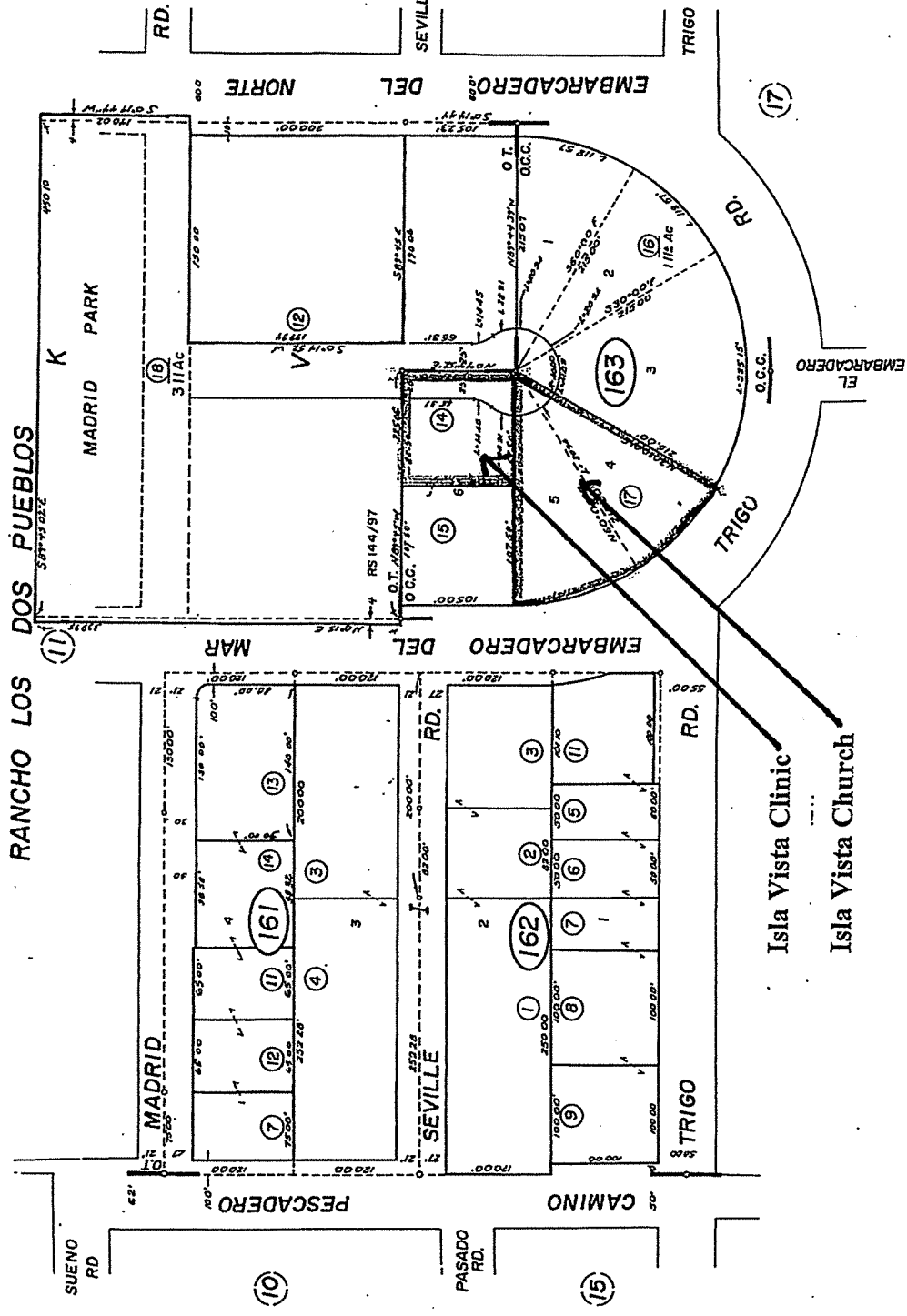
The three properties are located in Isla Vista, and were acquired separately by the Redevelopment Agency in 2008. (APN 075-111-015 was initially acquired by the County in 2006, and subsequently transferred to the Redevelopment Agency in 2008). Each acquisition was presented to the Planning Commission for determinations as to conformity with the Comprehensive Plan of the County of Santa Barbara, and each was found to be in conformity.

**LOCATION:** The Isla Vista Clinic (075-163-014) is located at 970 Embarcadero Del Mar, the Isla Vista Church (APN 075-163-017) is located at 976 Embarcadero Del Mar, and the Isla Vista Parking Lot (APN 075-111-015) is located at 881 Embarcadero Del Mar, all as shown on the attached County Assessor Parcel Maps.

**EXTENT:** This transaction will transfer fee ownership of the properties from the Successor Agency to the Santa Barbara County Redevelopment Agency to the County of Santa Barbara. The proposed transfer will not change the use of any of the properties, and there are no projects planned for any of the locations.

**PURPOSE:** The purpose of the transfer is to facilitate the directive of the California Department of Finance, in accordance with California Redevelopment Agency Dissolution Law (California Health and Safety Code Section 34170, et seq.). The Successor Agency submitted a Long Range Property Management Plan to the Department of Finance requesting that the three properties be transferred to the County to continue to serve the public needs, based on their use for a governmental purpose, or to fulfill the requirements of an existing enforceable obligation (the Isla Vista parking Lot is encumbered by . The Department approved the Successor Agency's request on February 21, 2014, subject to approval by the Successor Agency's Oversight Committee. That approval was granted by the Oversight Committee on May 8, 2014.

The General Services Department hereby requests a determination that the proposed transfer of the three properties is consistent with the Comprehensive Plan of the County of Santa Barbara pursuant to Government Code Section 65402. Please forward the Planning Commission final report to the Real Property Division of the General Services Department. If you have any questions or require additional information, please contact me at 568-3065. Thank you for your assistance in this matter.



R.M. Bk. 15, Pg. 101—Ocean Terrace Tract  
 3/5/57 R.M. Bk. 40, Pg. 55—Orr Commercial Center

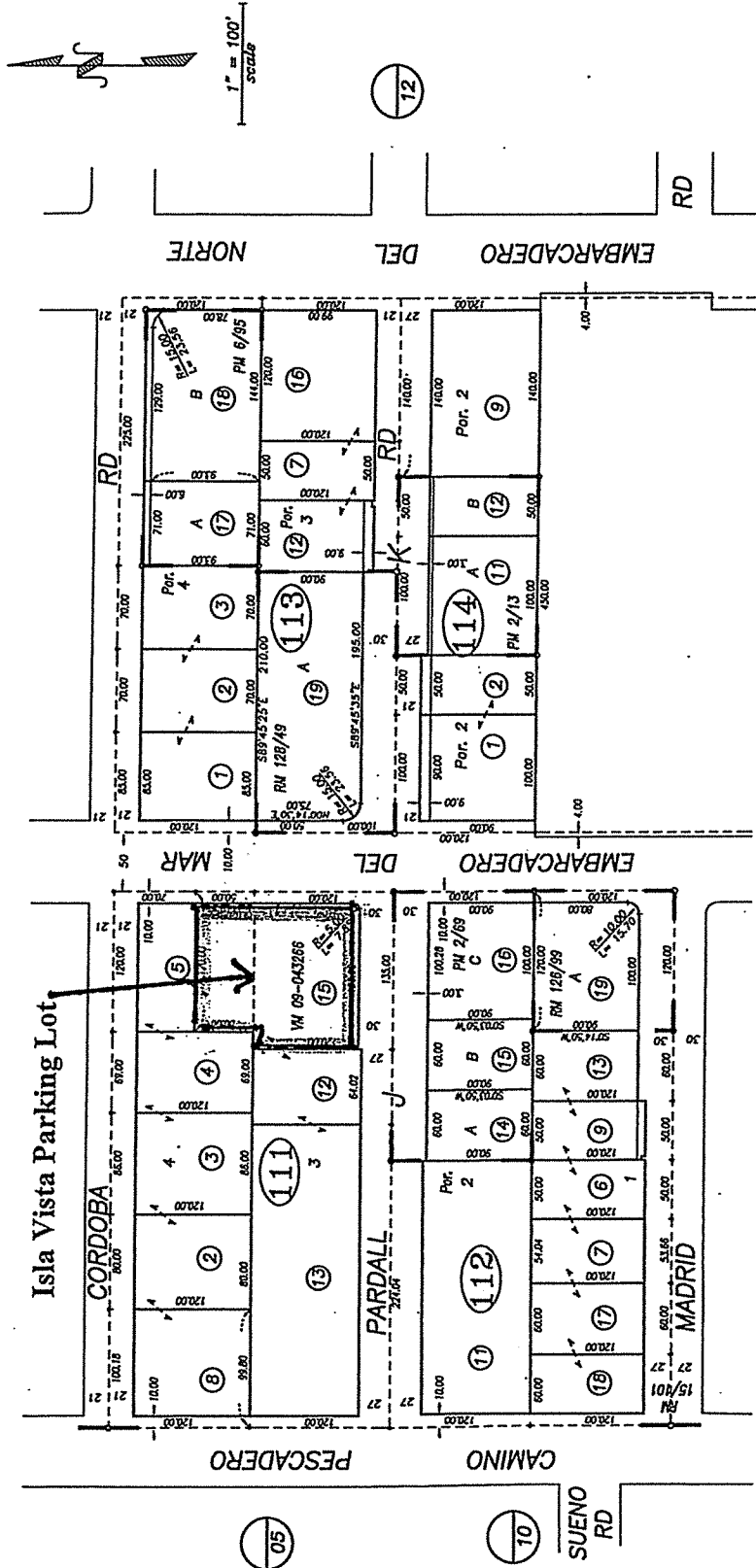
Assessor's Map Bk. 75 - Pg. 16  
 County of Santa Barbara, Calif.

NOTE - Assessor's Black Numbers Shown in Ellipses  
 Assessor's Parcel Numbers Shown in Circles

163/93 163-1113 MAP 143-18

POR. RANCHO LOS DOS PUEBLOS

075-11



**NOTICE**  
 Assessor Parcels are for tax assessment purposes only and do not indicate either parcel legality or a valid building site.

Assessor's Map Bk, 075-Pg, 11  
 County of Santa Barbara, Calif.

03/18/1926 R.M. Bk. 15 , Pg. 101-103, Tract "Ocean Terrace Tract"  
 10/10/1984 R.M. Bk. 126, Pg. 99-100, Tract "Map of Vacation, Reversion to Acreage"  
 06/27/1985 R.M. Bk. 128, Pg. 49-50 , Tract "Map of Vacation, Reversion to Acreage"

removed erroneous parcel line on 115-12  
 10/14 removed erroneous map on 112-14, 15, & 16

