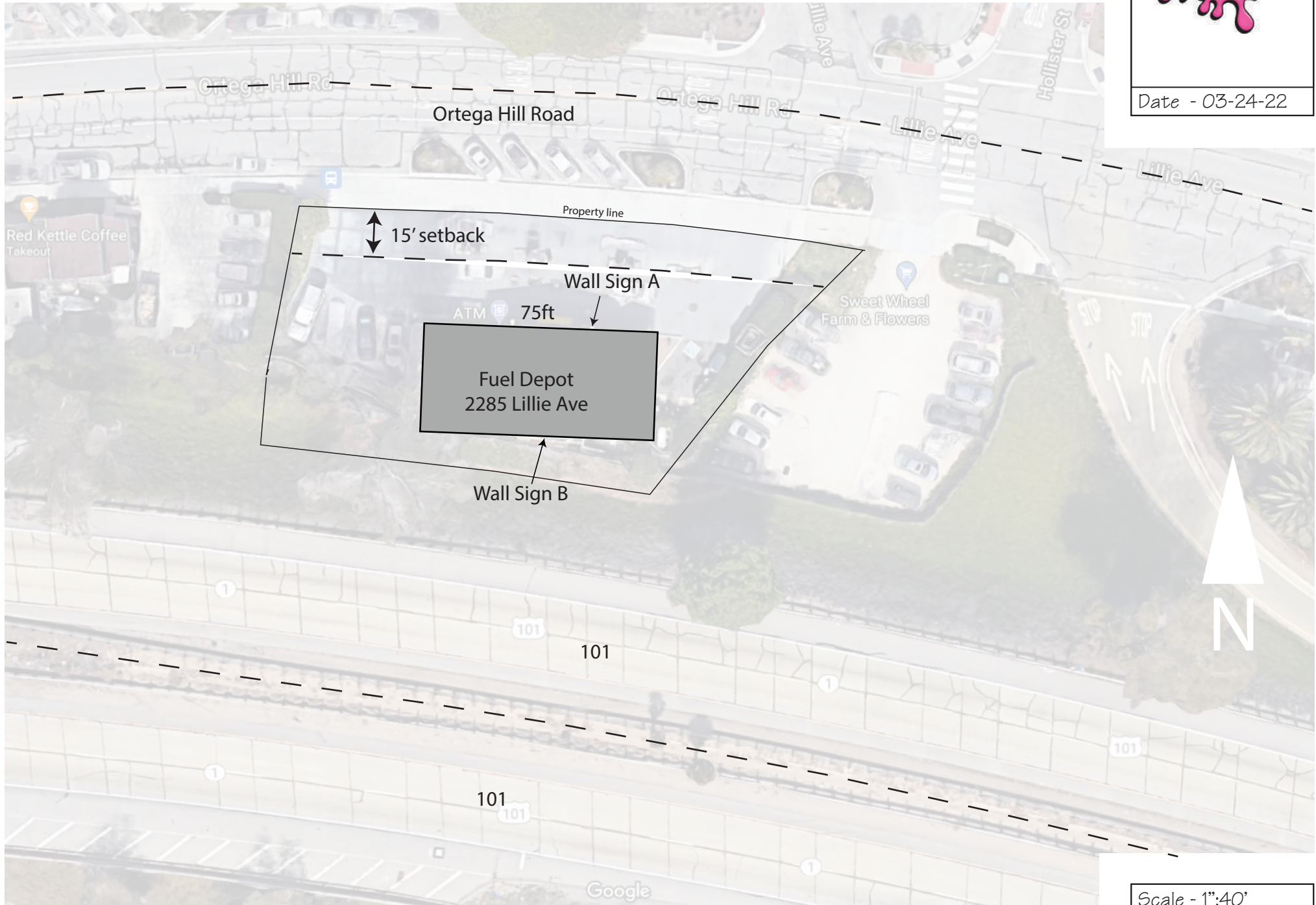


Site Plan



Date - 03-24-22

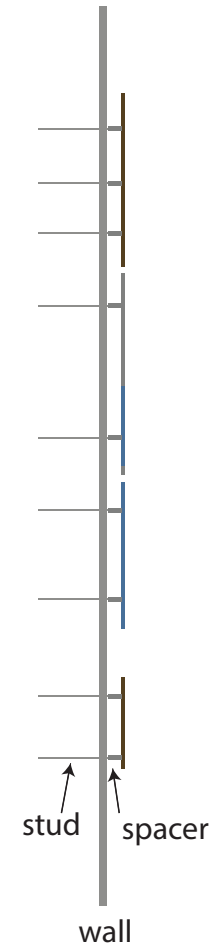


Scale - 1":40'



Date - 03-17-22

Sign A



1/4" aluminum pin mounted letters with 3/4" spacers overall size - 48"x42.7"
externally illuminated by x2 goose neck lamps, see cut sheet attached.

=14.2 sqft

Scale - 1"=1'



Date 04-05-22

Sign B

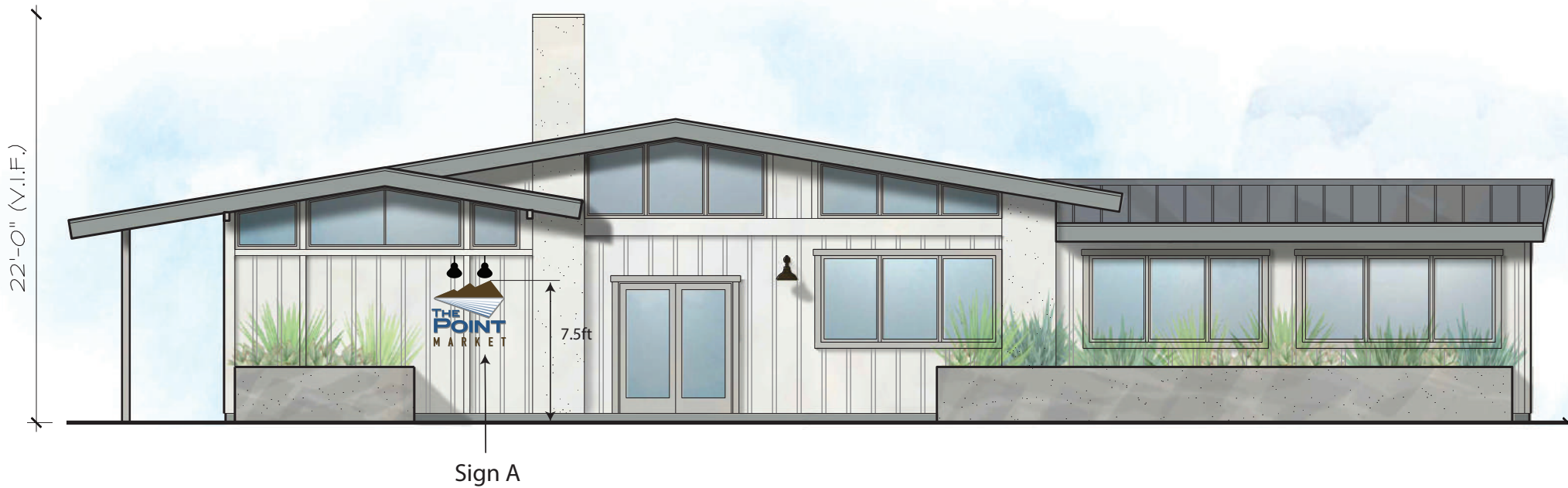


1/2" matte not reflective painted MDO panel
Illuminated by x4 gooseneck light fixtures see sheet attached
120"x51"= 42.5sqft

Scale - 1":1'



Date - 03-17-22



NORTH ELEVATION

1/8"=1'-0"

Fascia = 1125sqft

Scale - 1/8"=1'



SOUTH ELEVATION

Sign = 120"x51" = 42.5sqft
1/10 of 1125 = 112.5sqft
summerland max = 60sqft total

Fascia = 1125sqft

Scale - 1/8" = 1'



Date - 04-05-22

Gooseneck lighting

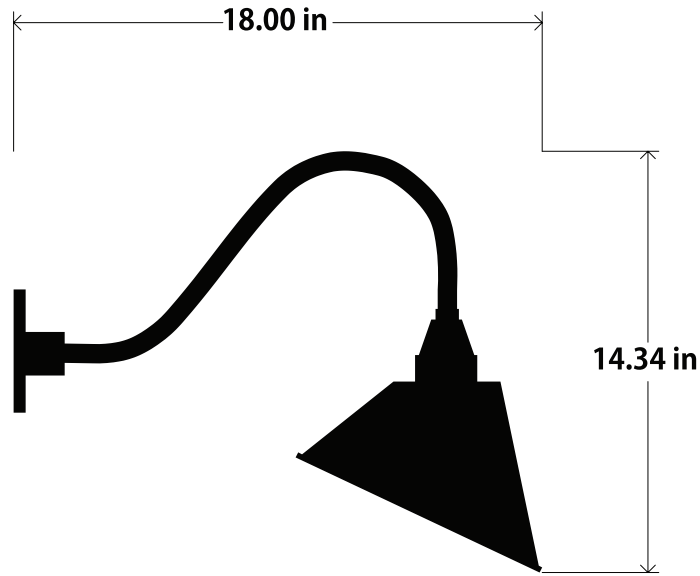
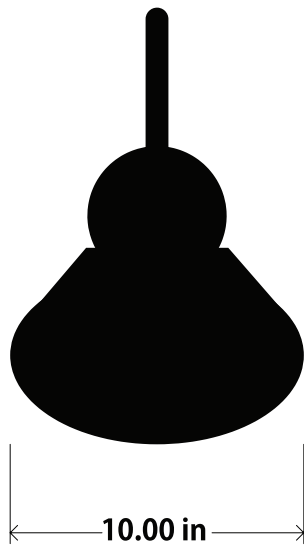


photo for reference. actual color will be black

Aluminum gooseneck fixtures, powder coated black
DARK SKIES COMPLIANT FIXTURES (FULLY SHIELDED, NO BRIGHTER THAN NECESSARY,
ONLY LIGHTS THE AREA TO BE ILLUMINATED, MINIMAL LIGHT LEAKAGE)
LED 10W Bulb equivalent to 100W incandecent bulb max per fixture
x2 fixtures per sign A
x4 fixtures per sign B



Date - 06-08-21

1. Front view of existing gas station



2. view of property looking South East



3. view of property looking North West





Date -04-05-22

4. Wall sign location



5. view of Lillie Ave elevation





Date - 10-14-21





Date - 10-14-21

