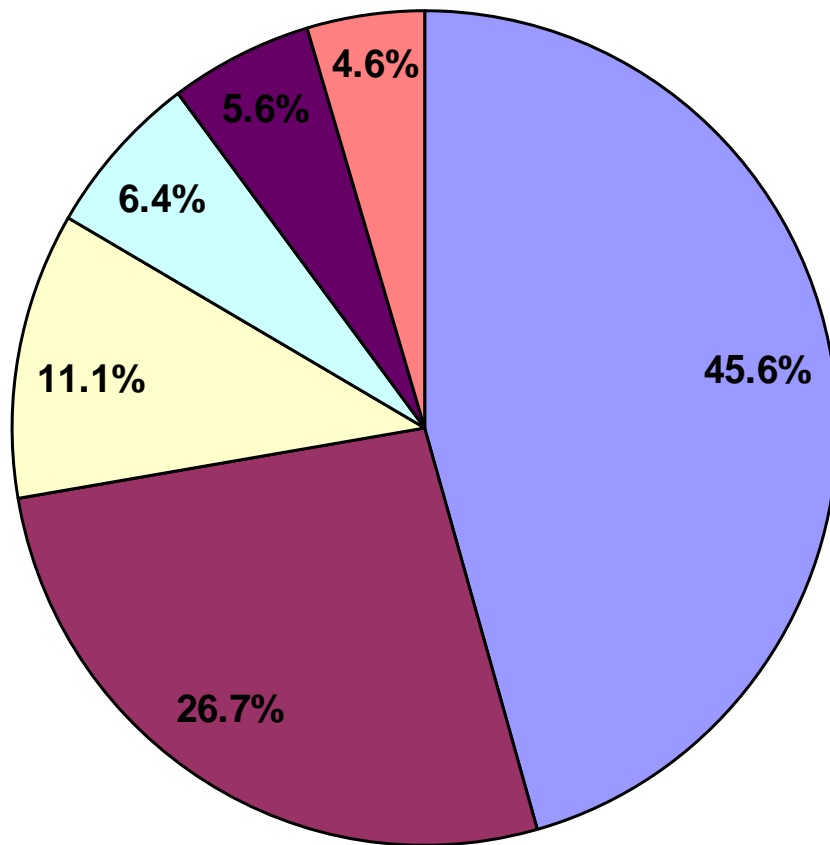


# **Clerk-Recorder-Assessor**

---

## ***Updated Property Tax Related Information***

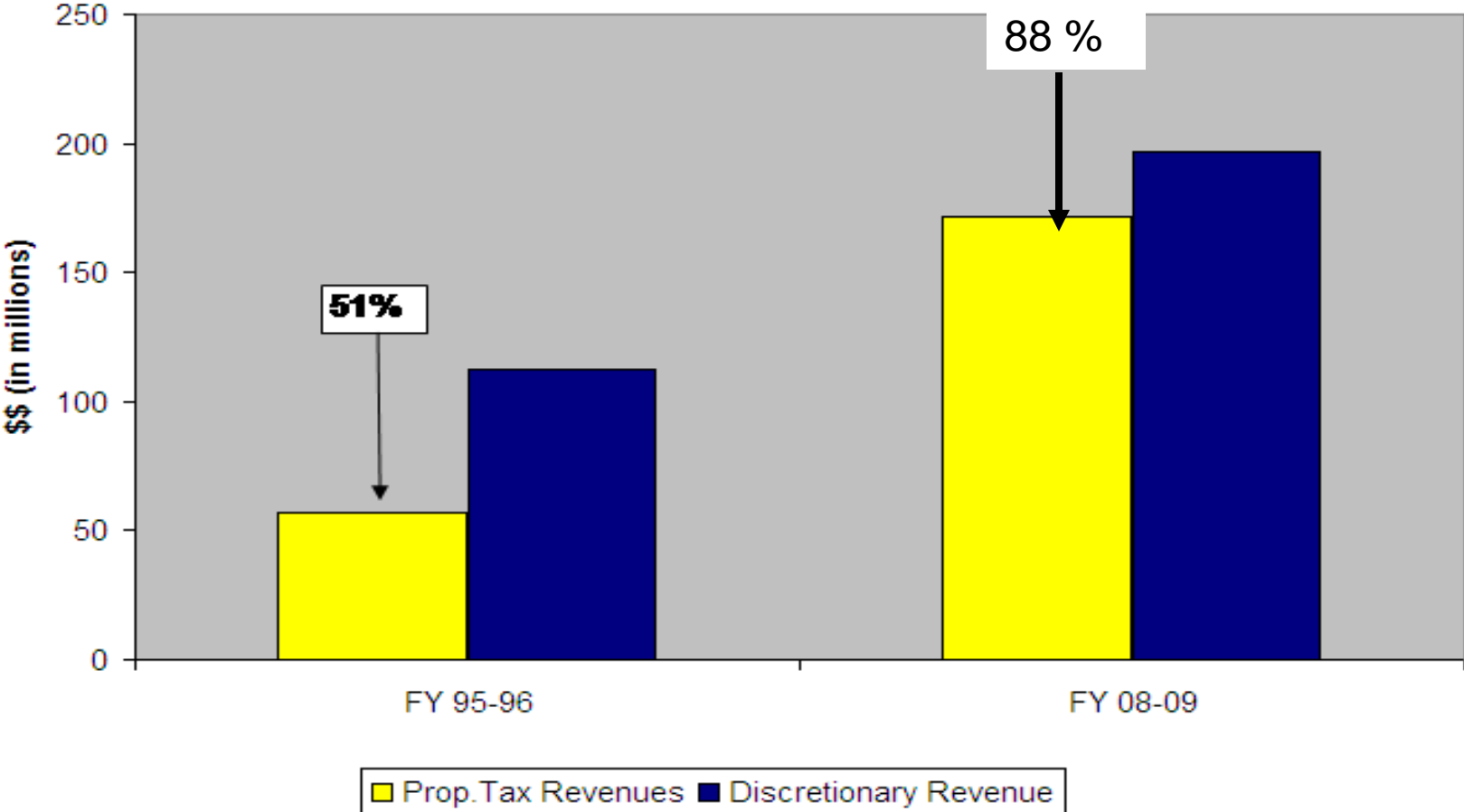
# Distribution of \$603 Million in 2008- 09 Property Taxes



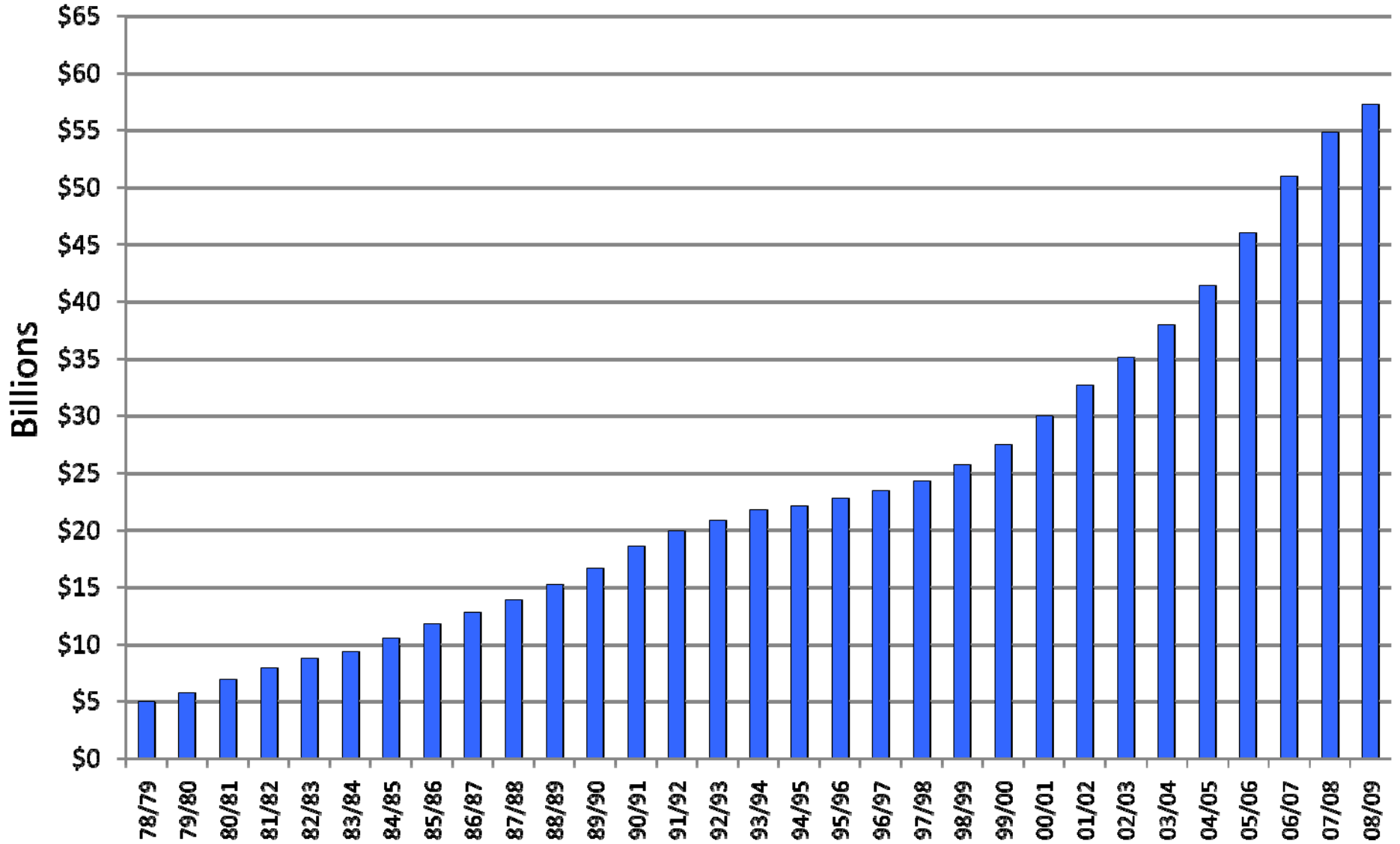
- \$275 M - Schools
- \$161 M - County General Fund
- \$67 M - Cities
- \$38 M - Dependent Districts
- \$34 M - Redevelopment Agencies
- \$28 M - Independent Districts

# Clerk-Recorder-Assessor

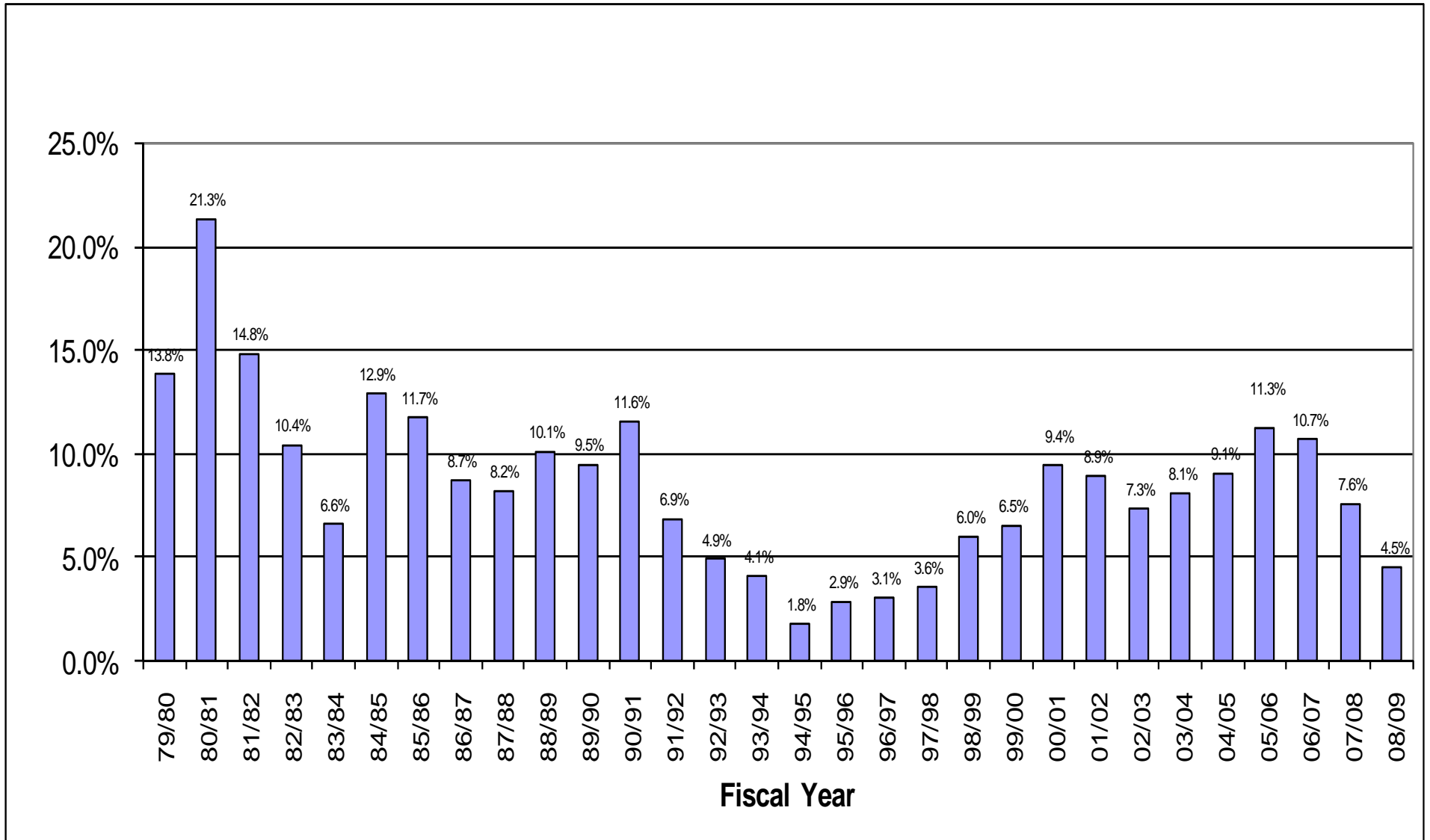
Property Tax Related Revenues vs Discretionary Revenue



# Santa Barbara Countywide Secured Assessment History (net of exemptions)



# Percent Increase in Secured Roll Value 79/80 to 08/09



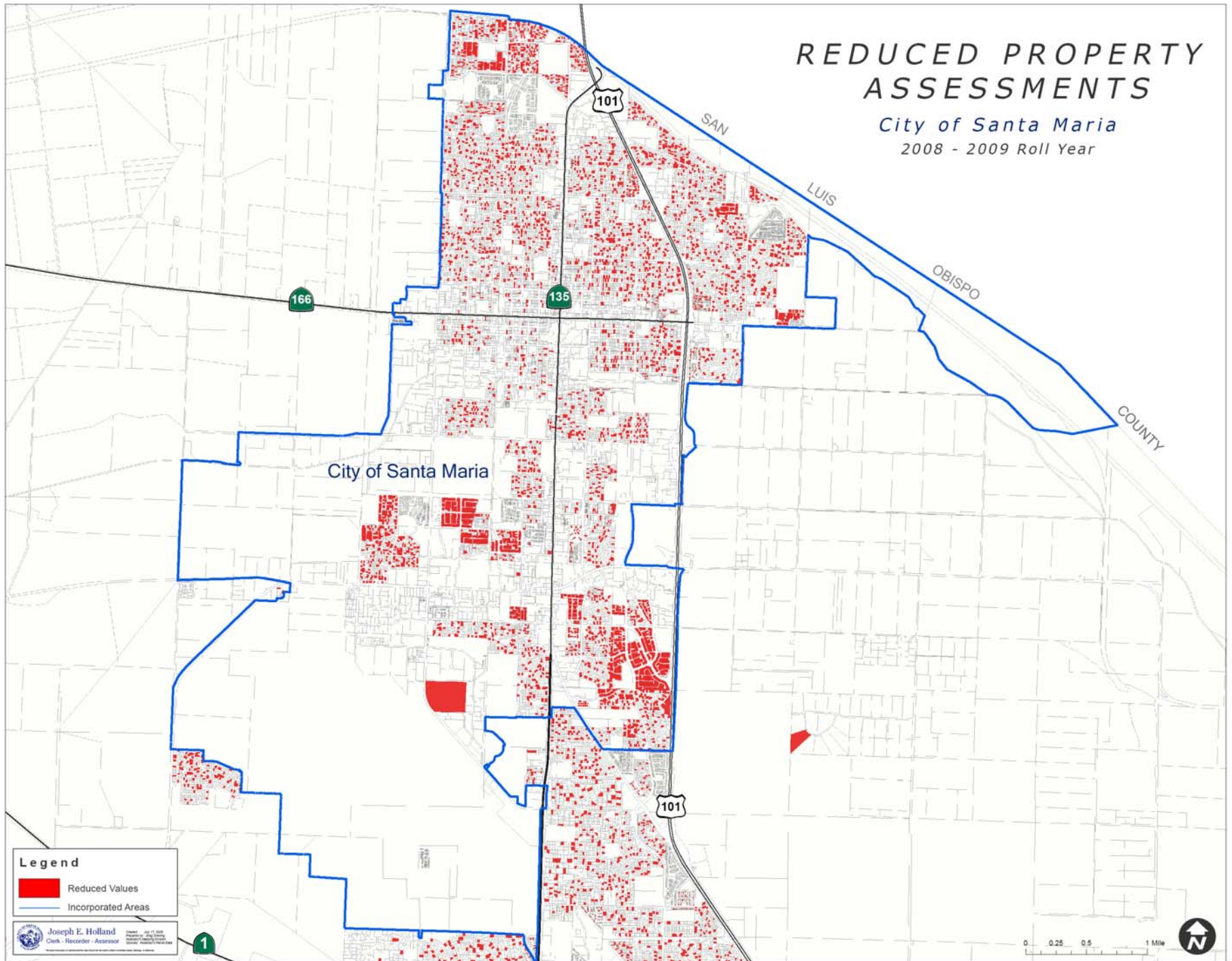
# FY 08-09 Assessment Impact of Reduced Values

## *Prop 8 & Section 51*

	<b>Est of Parcels Impacted</b>	<b>Estimated Value</b>	<b>Reduction /Parcel</b>
<b>South Coast</b>	<b>3,551</b>	<b>\$308,700,000</b>	<b>\$87,000</b>
<b>Lompoc / SY</b>	<b>2,766</b>	<b>\$241,500,000</b>	<b>\$87,000</b>
<b>Santa Maria</b>	<b>7,639</b>	<b>\$637,000,000</b>	<b>\$83,000</b>
<b>Totals</b>	<b>13,956</b>	<b>\$1,187,200,000</b>	<b>\$85,000</b>
	<b>About 11% of 126K Parcels in County</b>	<b>About 2.2% growth rate reduction on base of \$55B</b>	

# REDUCED PROPERTY ASSESSMENTS

City of Santa Maria  
2008 - 2009 Roll Year



**Legend**  
■ Reduced Values  
— Incorporated Areas

Joseph E. Holland  
Clerk - Recorder - Assessor

1

0 0.25 0.5 1 Mile



City of Santa Maria

# REDUCED PROPERTY ASSESSMENTS

Orcutt Area

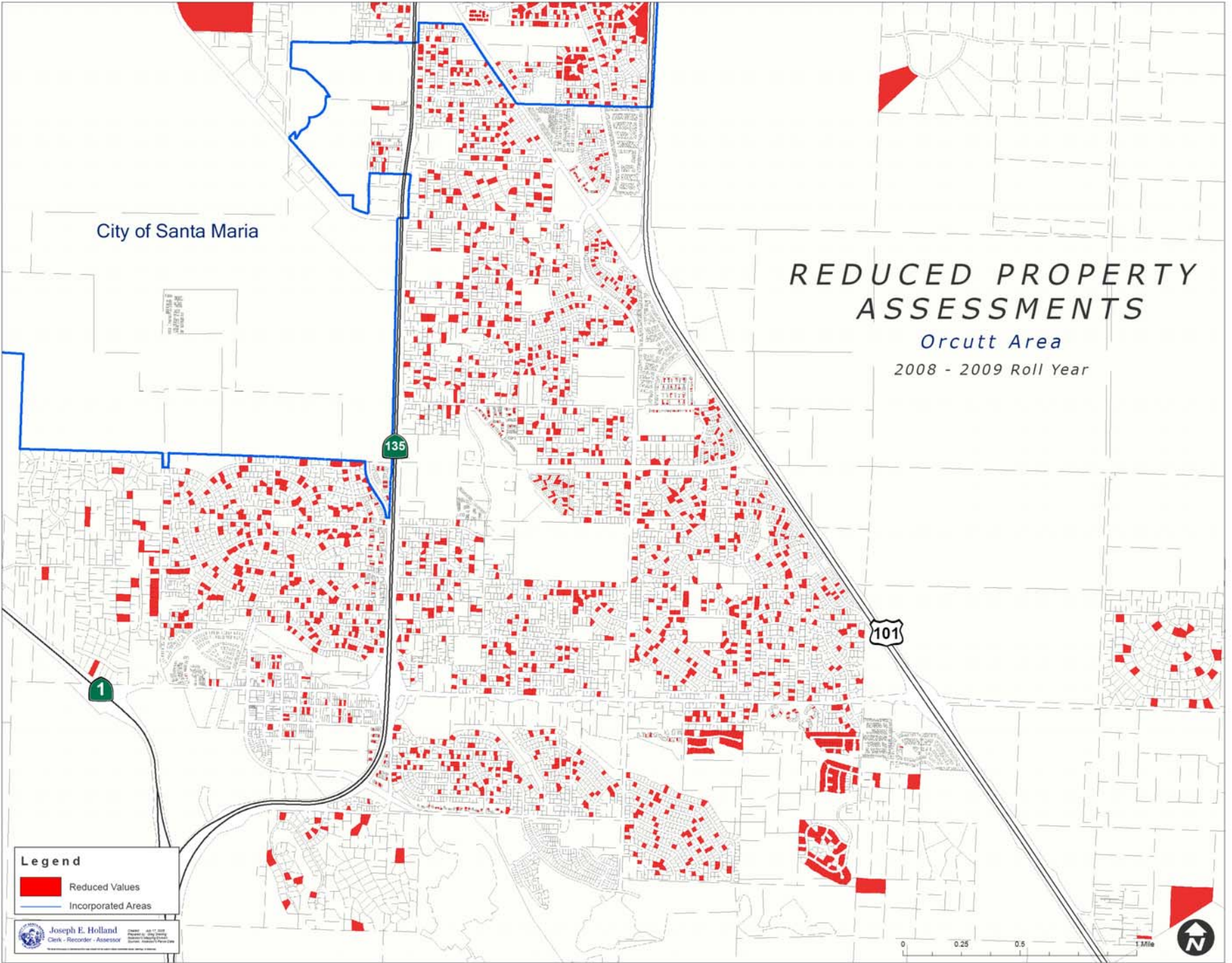
2008 - 2009 Roll Year

### Legend

-  Reduced Values
-  Incorporated Areas

Joseph E. Holland  
Clerk - Recorder - Assessor

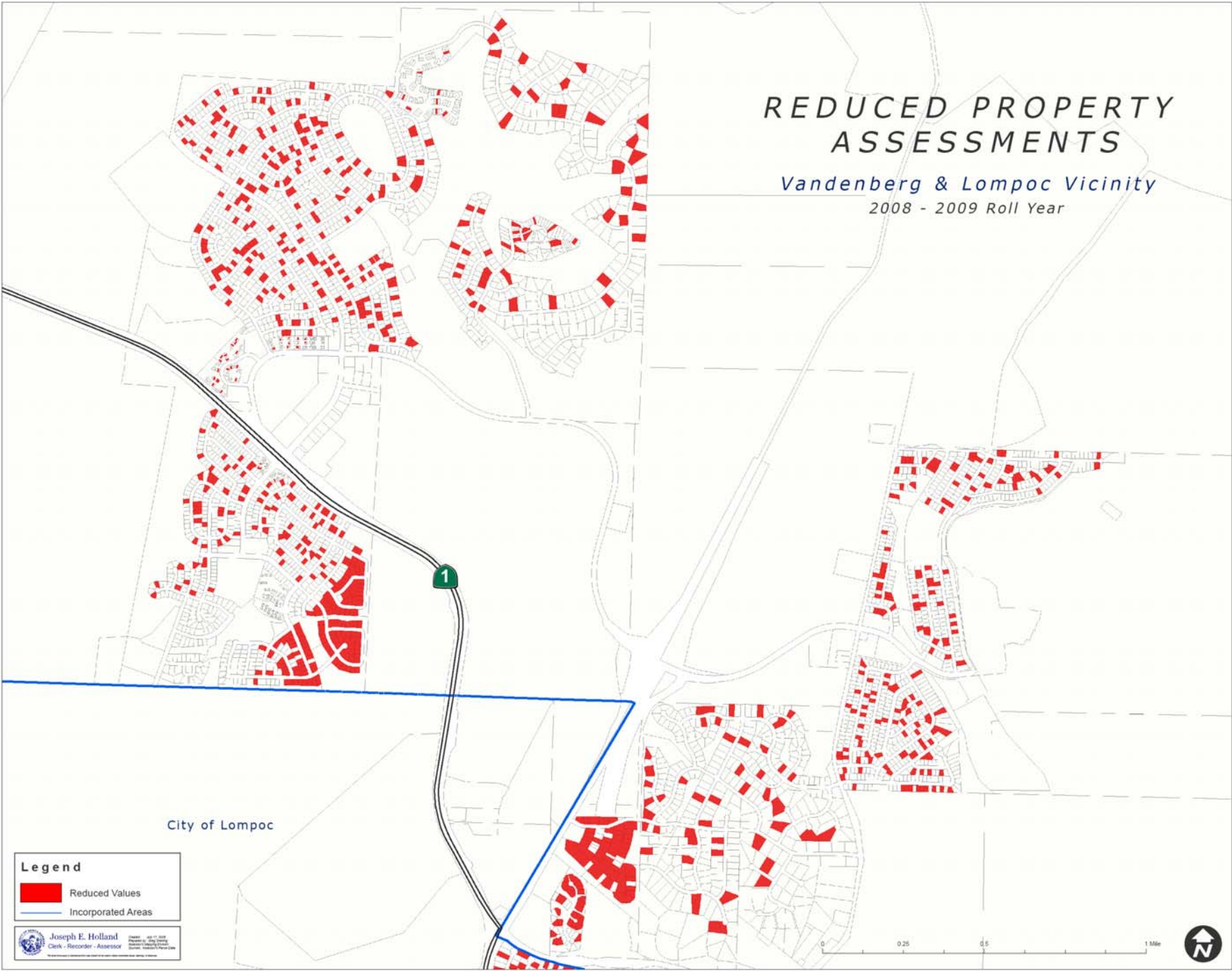
0 0.25 0.5 1 Mile





# REDUCED PROPERTY ASSESSMENTS

*Vandenberg & Lompoc Vicinity*  
2008 - 2009 Roll Year



City of Lompoc

**Legend**

- Reduced Values
- Incorporated Areas

Joseph E. Holland  
Clerk - Recorder - Assessor



# REDUCED PROPERTY ASSESSMENTS

City of Lompoc  
2008 - 2009 Roll Year

City of Lompoc

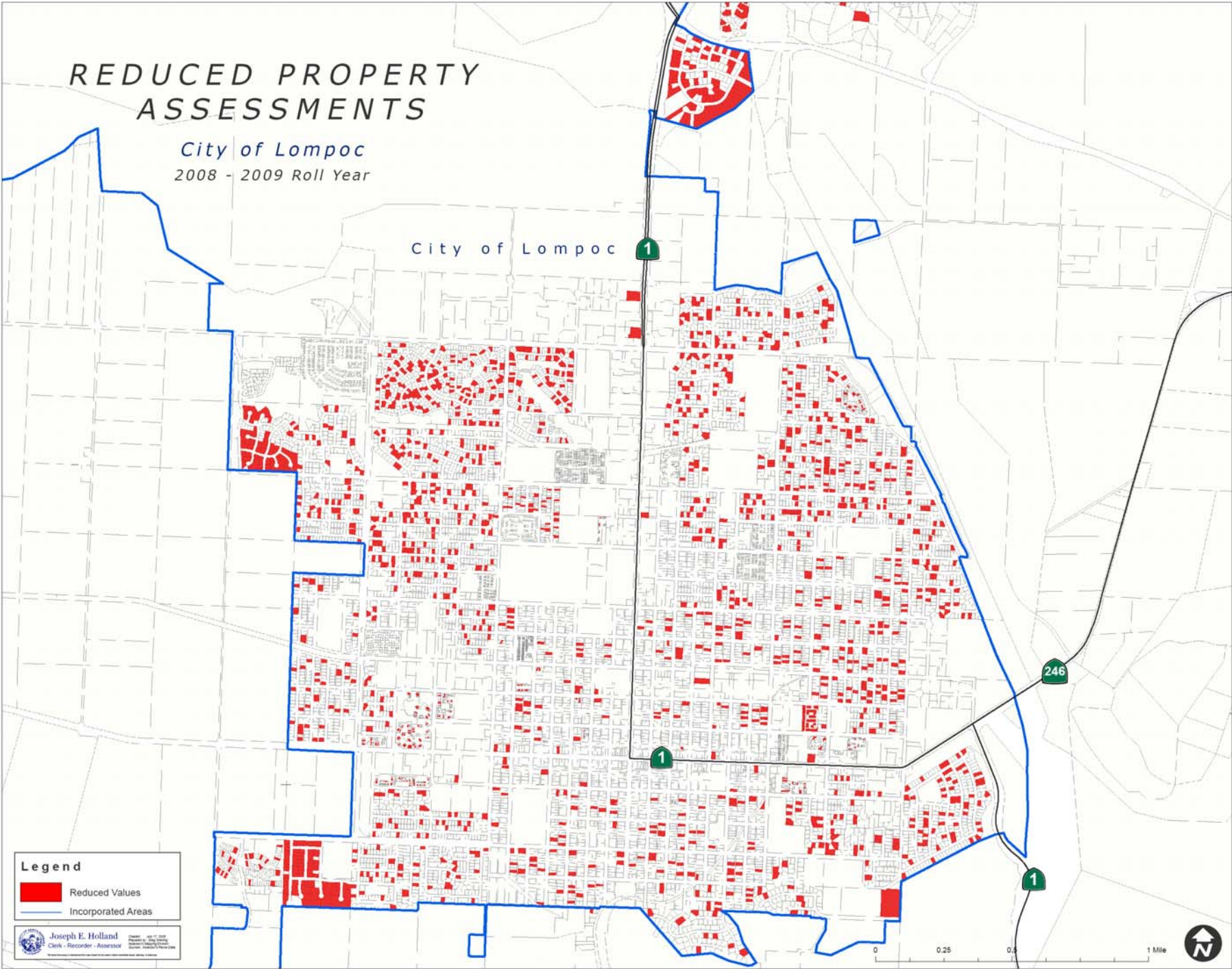
## Legend

-  Reduced Values
-  Incorporated Areas

Joseph E. Holland  
Clerk - Recorder - Assessor

DATE: APR 11, 2008  
PROJECT: City of Lompoc  
ASSessor: Joseph E. Holland

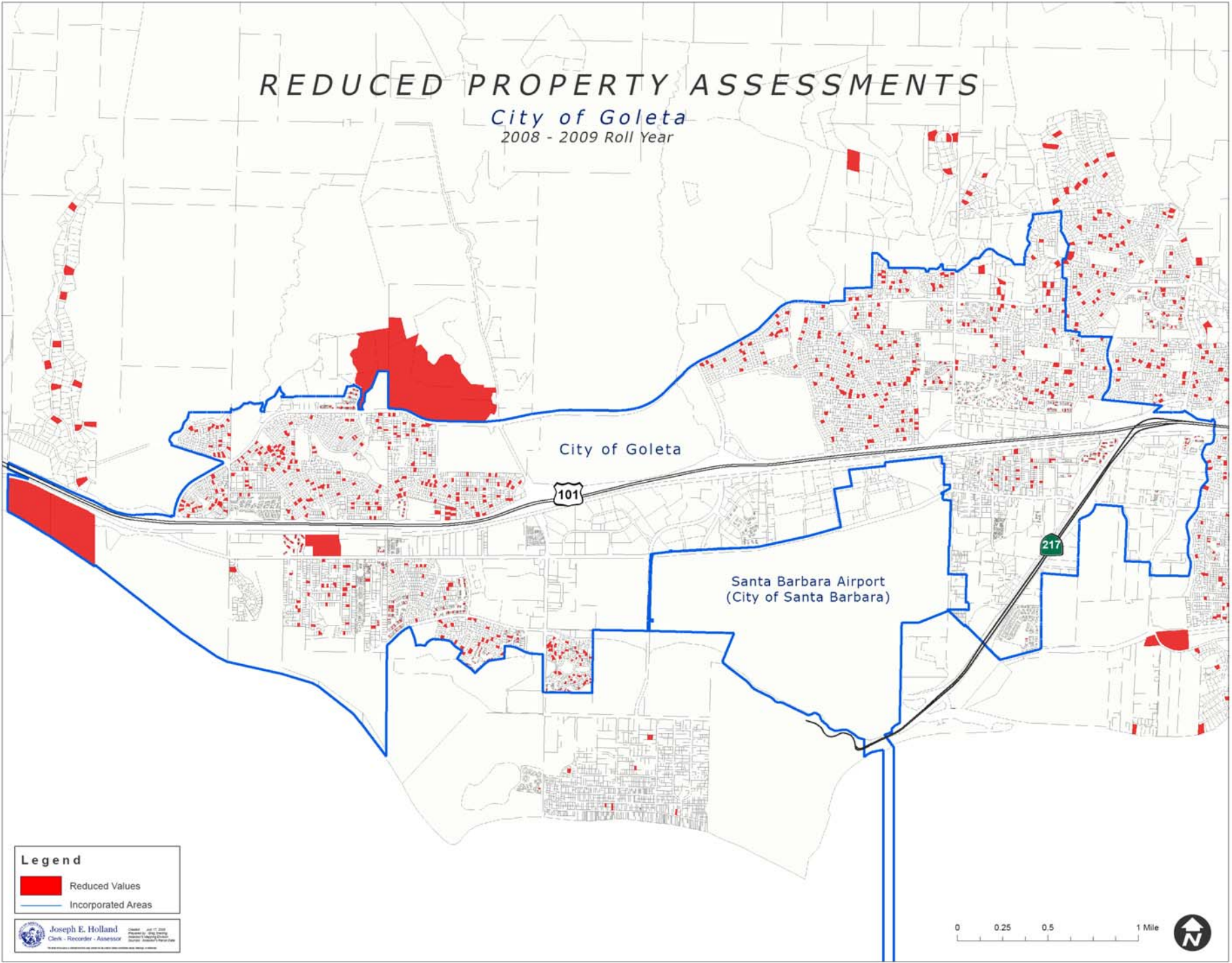
0 0.25 0.5 1 Mile



# REDUCED PROPERTY ASSESSMENTS

City of Goleta

2008 - 2009 Roll Year



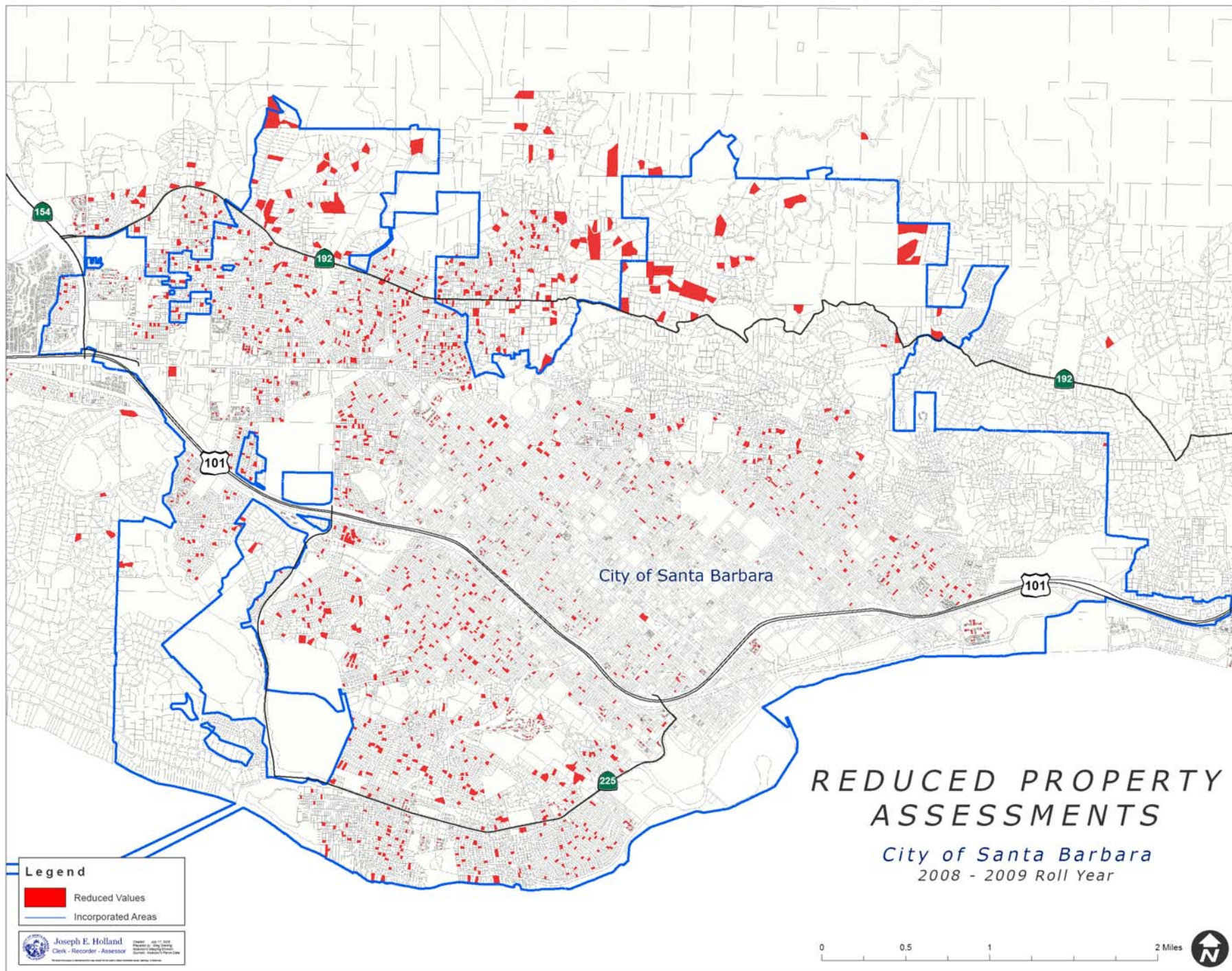
## Legend

-  Reduced Values
-  Incorporated Areas


Joseph E. Holland  
Clerk - Recorder - Assessor

0 0.25 0.5 1 Mile





**Legend**

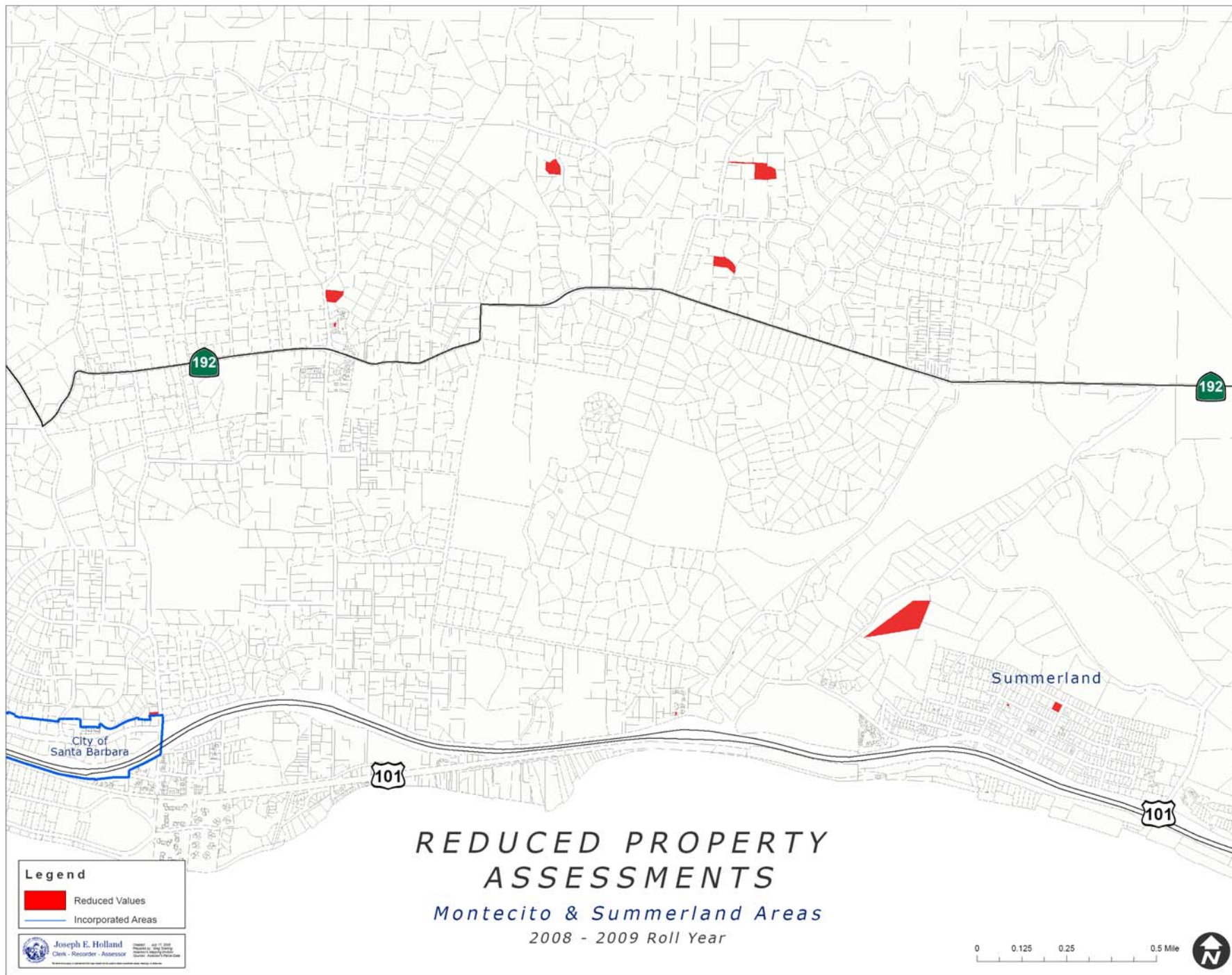
-  Reduced Values
-  Incorporated Areas

 Joseph E. Holland  
Clerk - Recorder - Assessor

# REDUCED PROPERTY ASSESSMENTS

*City of Santa Barbara*  
2008 - 2009 Roll Year



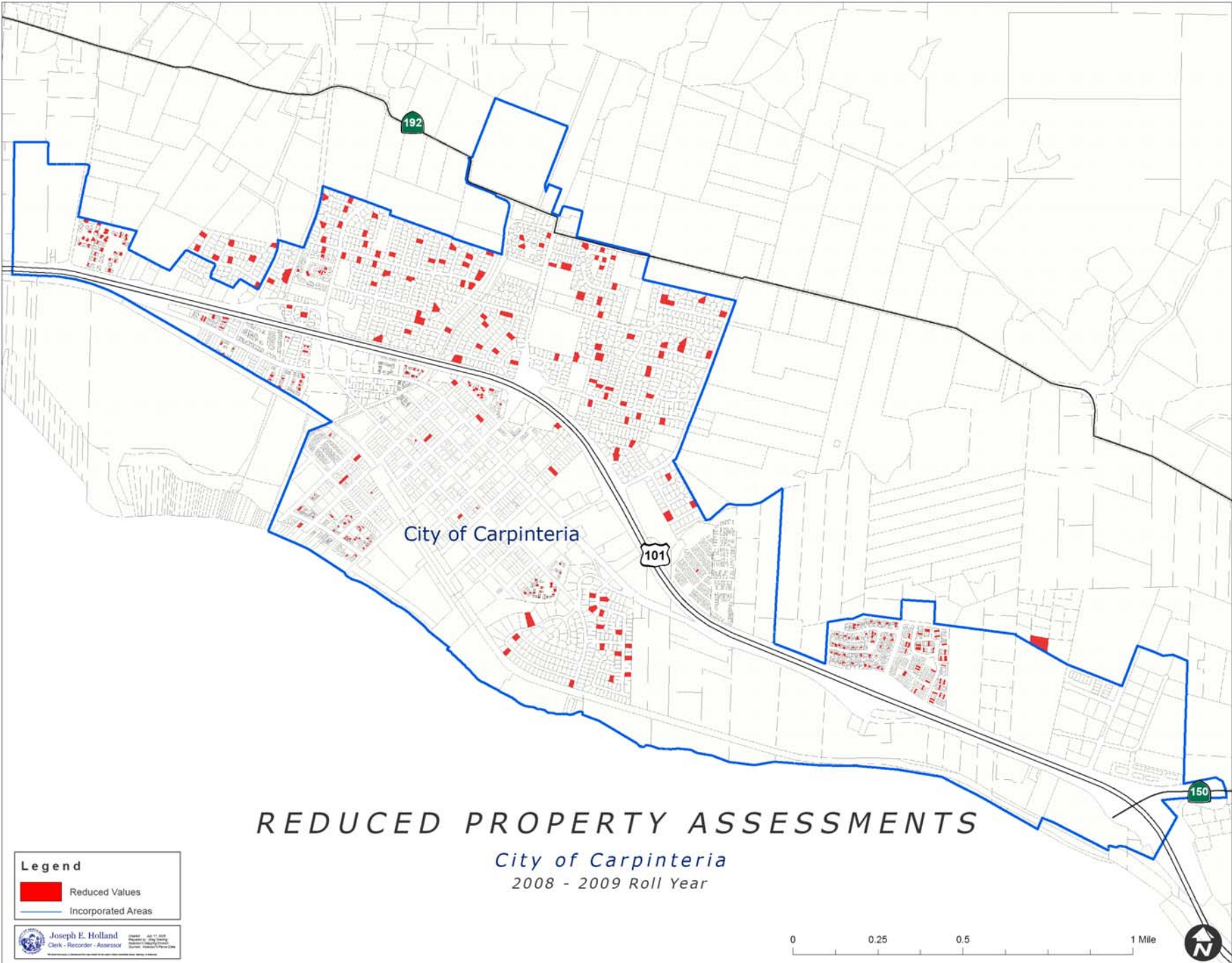


**Legend**  
■ Reduced Values  
— Incorporated Areas

Joseph E. Holland  
Clerk - Recorder - Assessor  
Office: 1001 N. Santa Barbara Street  
Santa Barbara, CA 93101  
Phone: (805) 964-1000  
Fax: (805) 964-1001  
www.sbcassessor.com

**REDUCED PROPERTY ASSESSMENTS**  
*Montecito & Summerland Areas*  
2008 - 2009 Roll Year

0 0.125 0.25 0.5 Mile 



City of Carpinteria

# REDUCED PROPERTY ASSESSMENTS

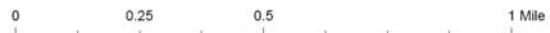
City of Carpinteria  
2008 - 2009 Roll Year

**Legend**

- Reduced Values
- Incorporated Areas

Joseph E. Holland  
Clerk - Recorder - Assessor

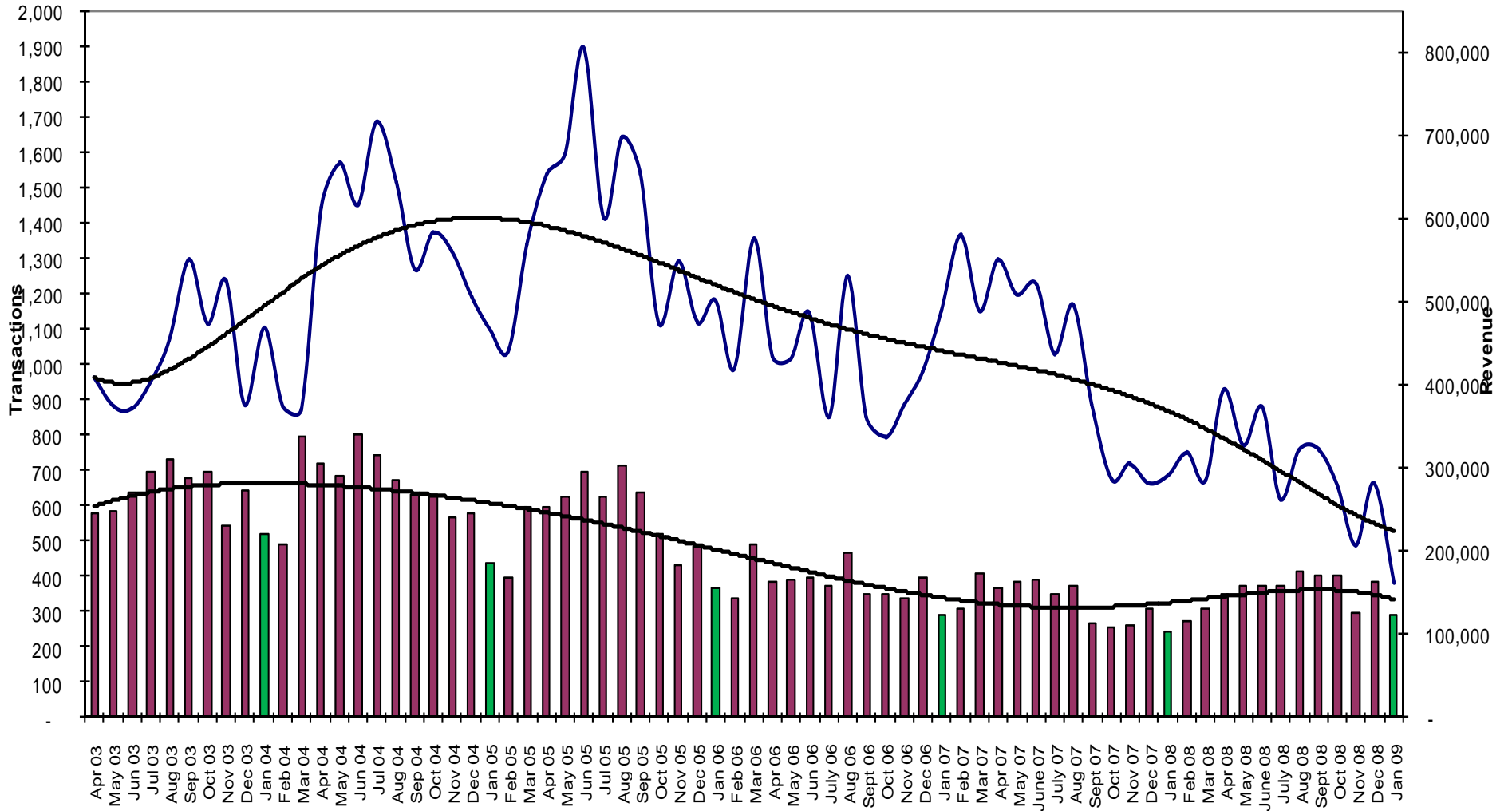
Created: April 11, 2008  
Project: City of Carpinteria  
Request: Reduced Property Assessments



**Trustee's Deed - TDEE**  
**By Location**  
**Calendar Year 2008 as of December 31, 2008**

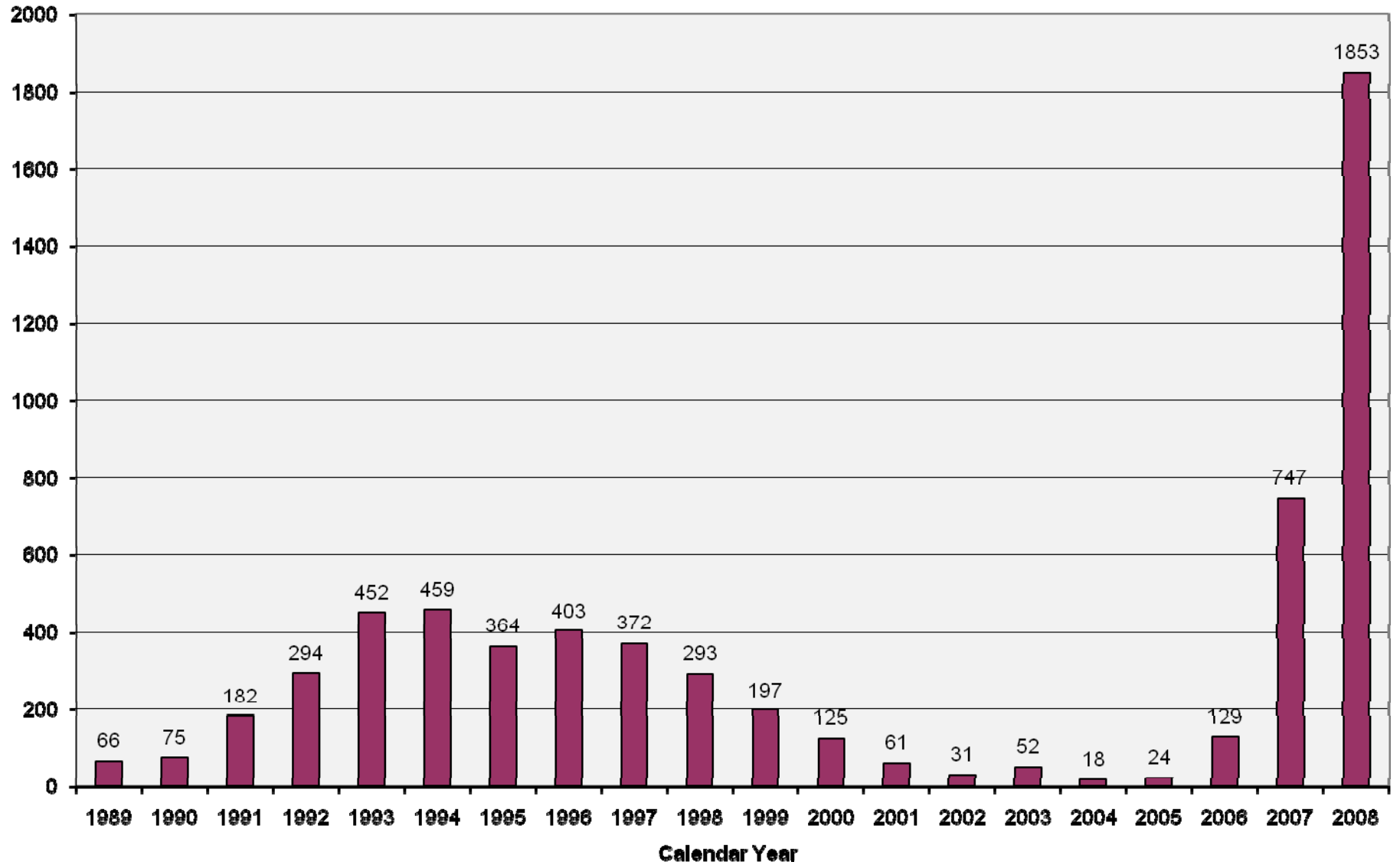
Area	Jan	Feb	Mar	Apr	May	Jun	Jul	Aug	Sep	Oct	Nov	Dec	Total	% of Total	Number of Parcels in area
<b>Santa Maria Valley</b>															
City of Santa Maria	73	62	53	88	99	98	119	114	115	60	44	55	980	52%	23,709
Santa Maria - unincorporated	3	1	4	3	2	2	2	1	6	1	2	2	29	2%	2,261
Orcutt	12	15	13	11	12	15	32	18	13	10	5	10	166	9%	12,186
City of Guadalupe	3	6	3	4	5	6	3	10	9	4	2	1	56	3%	1,658
Solvang	--	--	--	--	--	--	1	--	--	--	--	--	1	0%	310
<b>Total</b>	<b>91</b>	<b>84</b>	<b>73</b>	<b>106</b>	<b>118</b>	<b>121</b>	<b>157</b>	<b>143</b>	<b>143</b>	<b>75</b>	<b>53</b>	<b>68</b>	<b>1,232</b>	<b>65%</b>	<b>40,124</b>
<b>Santa Ynez Valley</b>															
City of Buellton	--	1	1	--	2	2	4	4	2	--	2	--	18	1%	1,896
City of Solvang	1	1	--	2	1	1	--	3	4	--	--	3	16	1%	2,206
Los Alamos	1	2	1	2	1	--	1	2	--	3	1	1	15	1%	861
Los Olivos	--	1	--	--	--	--	1	--	--	--	--	--	2	0%	1,654
Santa Ynez Valley	1	3	--	1	2	1	--	1	1	1	--	5	16	1%	3,568
<b>Total</b>	<b>3</b>	<b>8</b>	<b>2</b>	<b>5</b>	<b>6</b>	<b>4</b>	<b>6</b>	<b>10</b>	<b>7</b>	<b>4</b>	<b>3</b>	<b>9</b>	<b>67</b>	<b>4%</b>	<b>10,185</b>
<b>Lompoc</b>															
City of Lompoc	25	20	12	17	29	26	36	28	31	16	15	16	271	14%	10,960
Lompoc - unincorporated	3	3	6	6	7	9	9	8	5	2	2	5	65	3%	5,217
<b>Total</b>	<b>28</b>	<b>23</b>	<b>18</b>	<b>23</b>	<b>36</b>	<b>35</b>	<b>45</b>	<b>36</b>	<b>36</b>	<b>18</b>	<b>17</b>	<b>21</b>	<b>336</b>	<b>18%</b>	<b>16,177</b>
<b>Santa Barbara</b>															
City of Santa Barbara	5	6	8	7	7	12	16	11	13	6	7	2	100	5%	24,718
Santa Barbara - unincorporated	1	1	4	--	1	--	2	2	2	--	1	1	15	1%	4,853
City of Goleta	5	8	3	2	6	5	6	6	3	8	4	3	59	3%	9,290
Goleta - unincorporated	--	3	--	1	3	--	4	1	5	5	3	3	28	1%	9,587
<b>Total</b>	<b>11</b>	<b>18</b>	<b>15</b>	<b>10</b>	<b>17</b>	<b>17</b>	<b>28</b>	<b>20</b>	<b>23</b>	<b>19</b>	<b>15</b>	<b>9</b>	<b>202</b>	<b>11%</b>	<b>48,448</b>
<b>Other</b>															
City of Carpinteria	3	1	--	2	3	2	2	4	6	2	--	--	25	1%	4,885
Carpinteria - unincorporated	--	--	--	--	1	--	1	1	--	--	1	--	4	0%	2,693
Montecito	--	2	--	--	--	2	1	3	2	--	--	1	11	1%	4,126
Cuyama	--	--	--	--	--	--	1	--	2	1	--	--	4	0%	1,433
<b>Total</b>	<b>3</b>	<b>3</b>	<b>--</b>	<b>2</b>	<b>4</b>	<b>4</b>	<b>5</b>	<b>8</b>	<b>10</b>	<b>3</b>	<b>1</b>	<b>1</b>	<b>44</b>	<b>2%</b>	<b>13,137</b>
<b>Total</b>	<b>136</b>	<b>136</b>	<b>108</b>	<b>146</b>	<b>181</b>	<b>181</b>	<b>241</b>	<b>217</b>	<b>219</b>	<b>119</b>	<b>89</b>	<b>108</b>	<b>1,881</b>	<b>100%</b>	<b>128,071</b>

# Countywide Documentary Transfer Tax



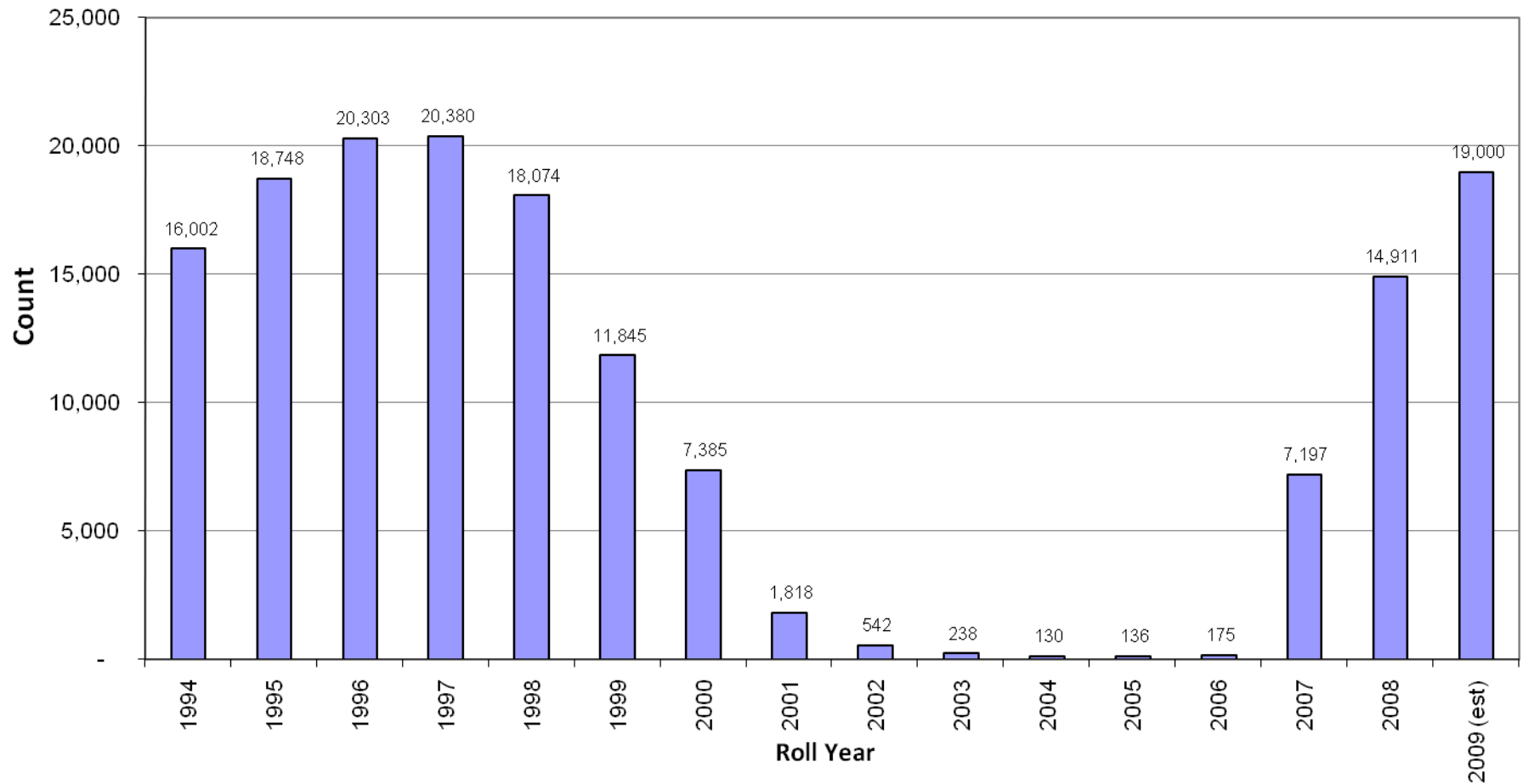


## County of Santa Barbara Clerk Recorder - Recorded Foreclosures

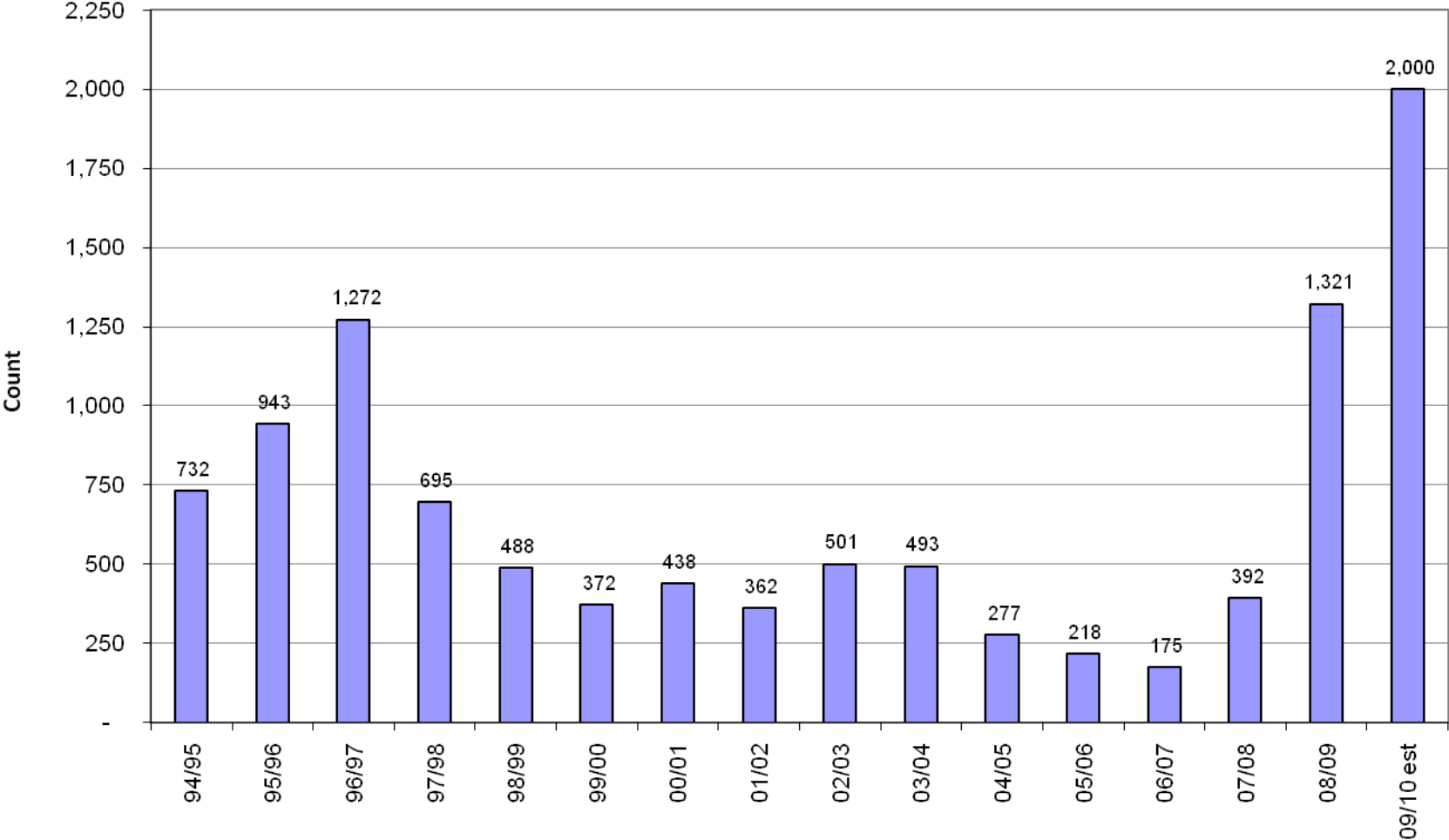


# Assessor Workload Section 51 Reductions

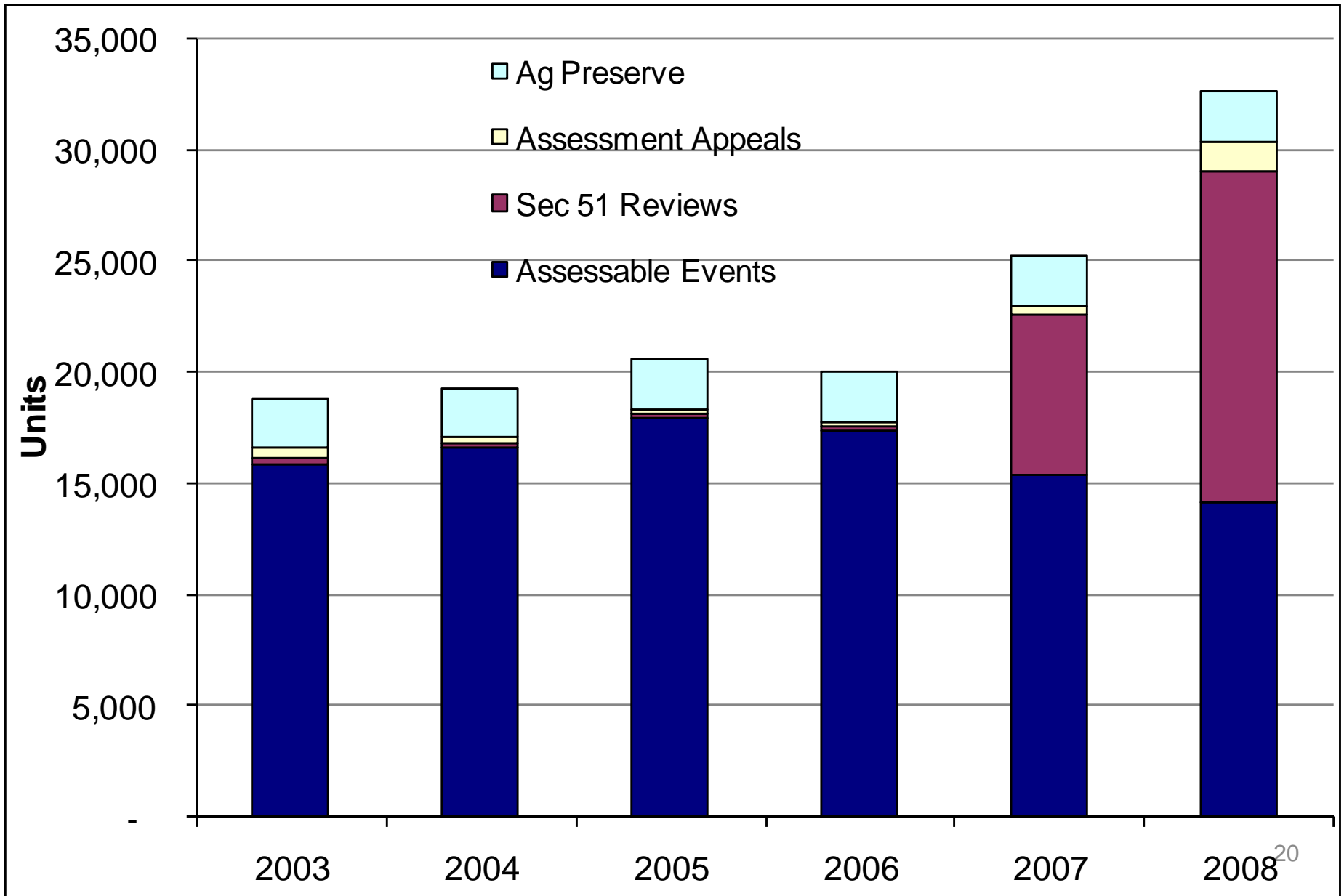
(Properties re-assessed to below factored base value)



# Assessor Workload Assessment Appeals



# Assessor Composite Workload



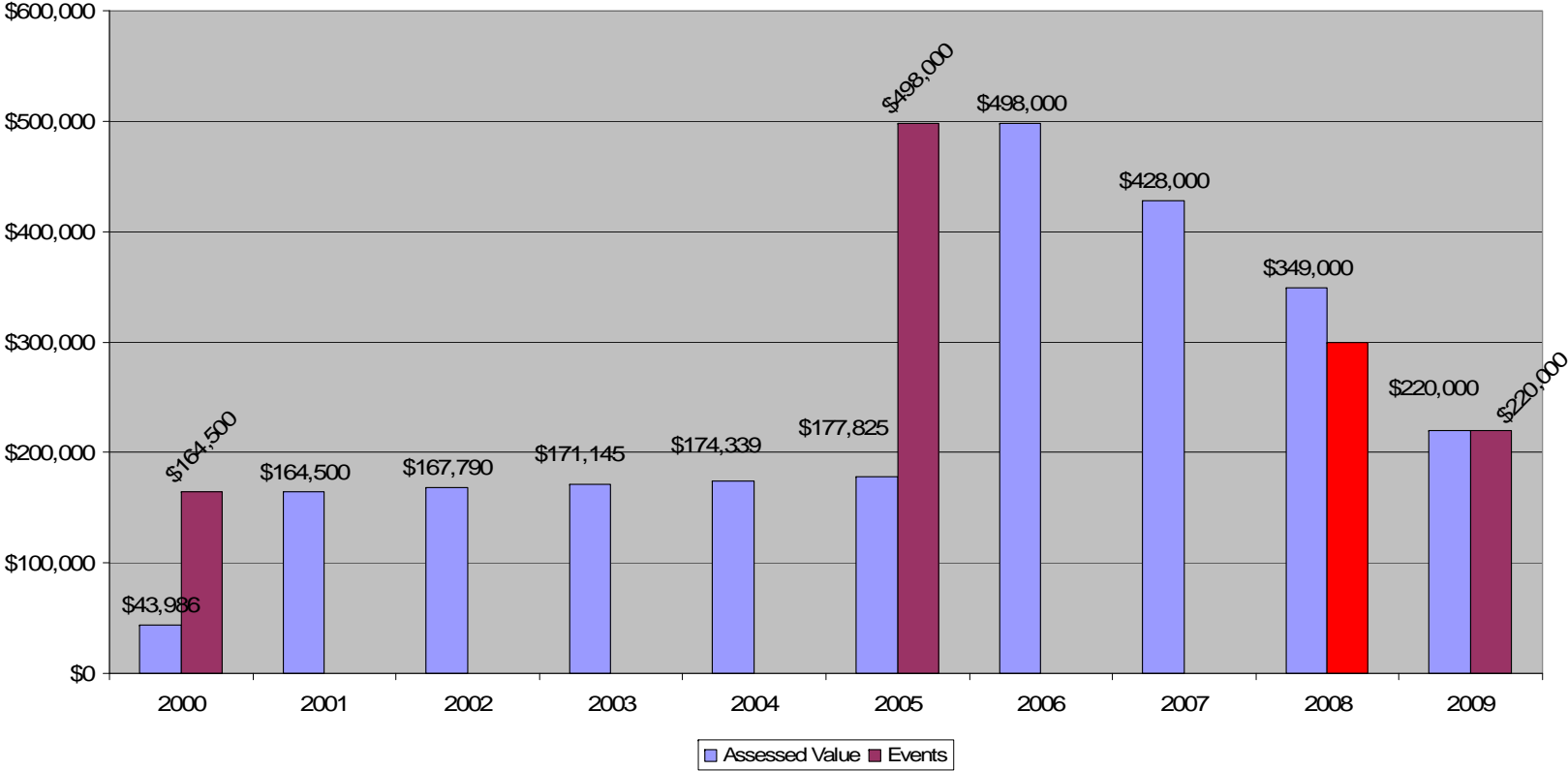
### Assessment History – Single Family Residence – Santa Maria

New House - \$164,500 11/30/2000

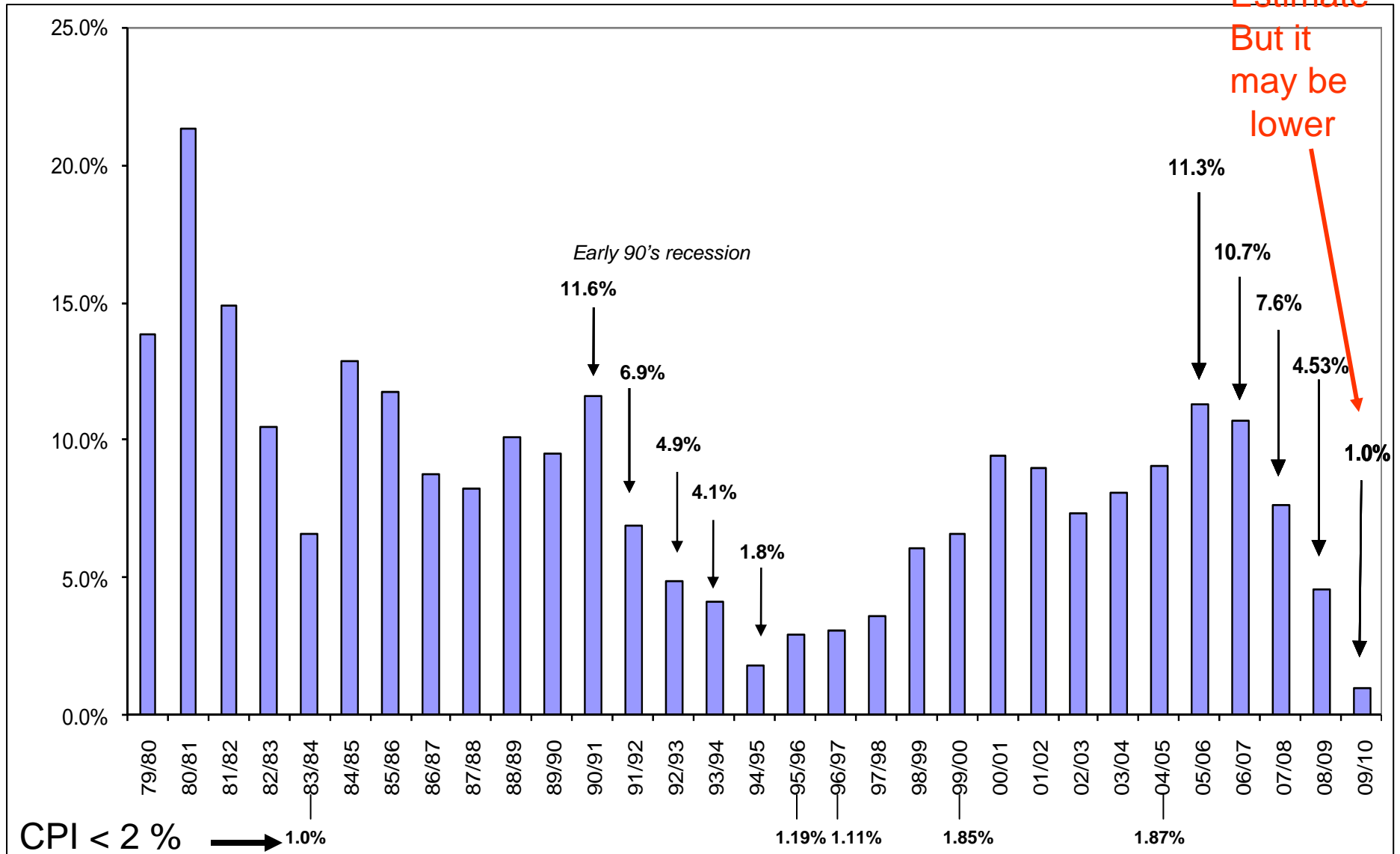
Sale - \$498,000 8/18/2005

Foreclosure – 3/4/2008

Sale - \$220,000 1/9/2009



# Santa Barbara Countywide Secured Assessment Roll Percent Growth



### Clerk-Recorder-Assessor Adopted FTE's

