



# Amendment to County Code Speed Limits

---



# SPEED LIMIT UPDATES

- Establishing Safety Corridors with Speed Reduction
- Updating Speed Limits based on E&TS
- Removing Speed Limit
- Lowering School Zone Speed Limit

# AB 43 – Safety Corridors

- **Safety Corridor can be established on roadway segments where the highest number of serious injury and fatality crashes occur to lower speeds by an additional 5 mph from the engineering and traffic survey.**
- **Safety Corridors need to be reviewed and re-evaluated with a frequency not to exceed seven years.**
- **Staff has identified the following locations have the highest number of serious injury and fatality crashes and has identified these roads as safety corridors.**

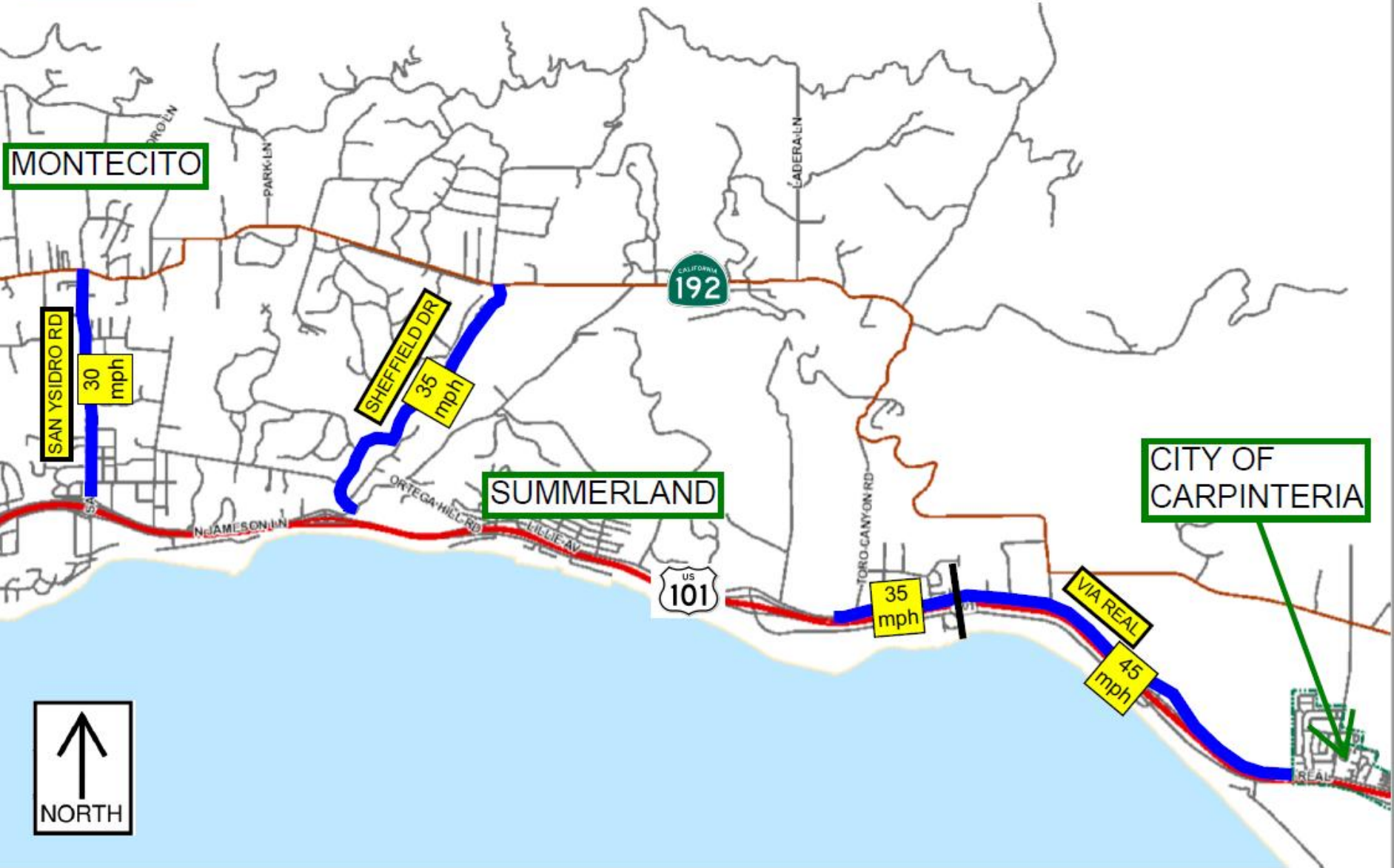


# PROPOSED SAFETY CORRIDORS

DISTRICT 1

Additional 5 mph  
Speed Limit Reduction  
=====

PROPOSED SPEED LIMITS SHOWN





# PROPOSED SAFETY CORRIDORS

Additional 5 mph  
Speed Limit Reduction  
===== PROPOSED SPEED LIMITS SHOWN

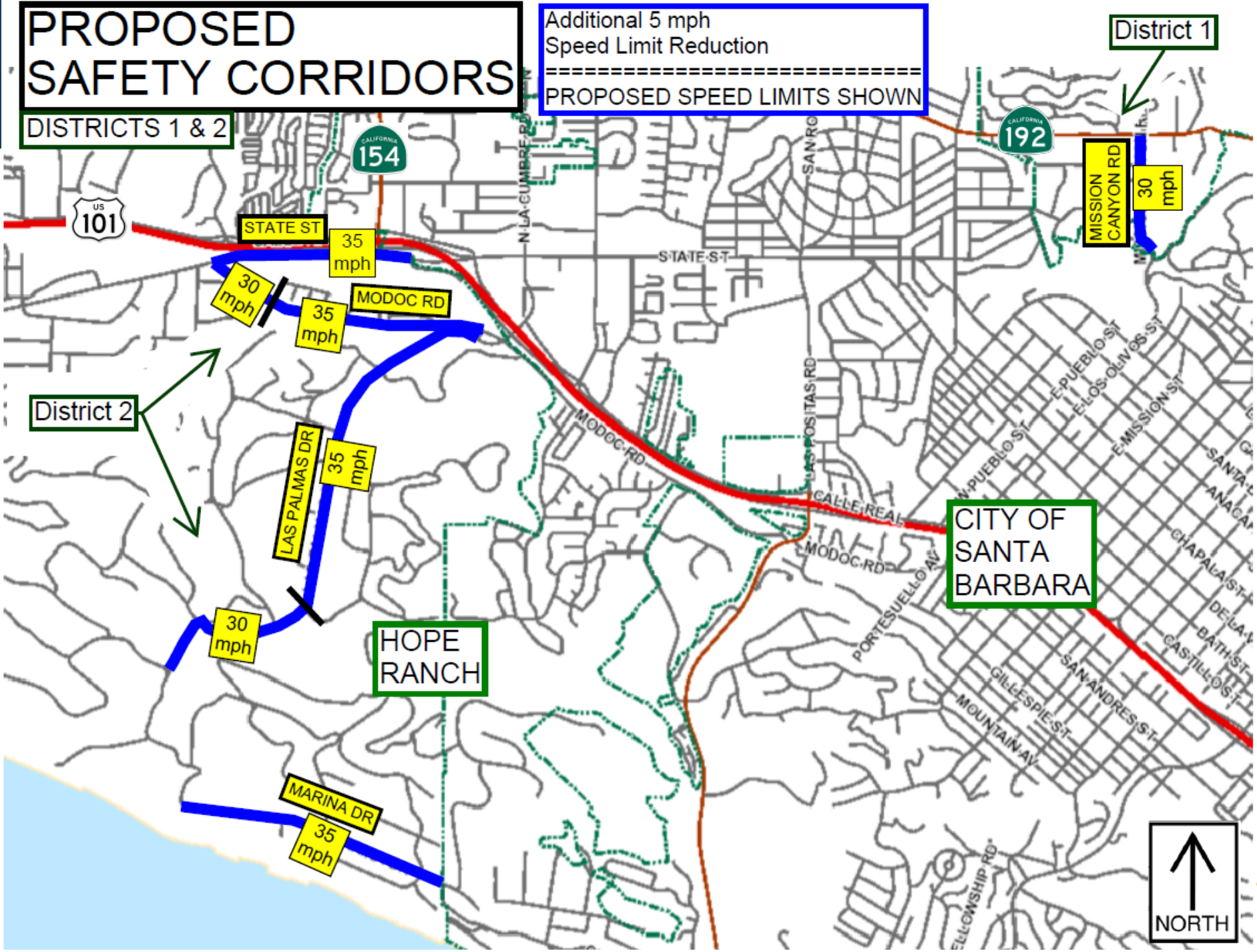
DISTRICTS 1 & 2

District 1

District 2

CITY OF  
SANTA  
BARBARA

HOPE  
RANCH

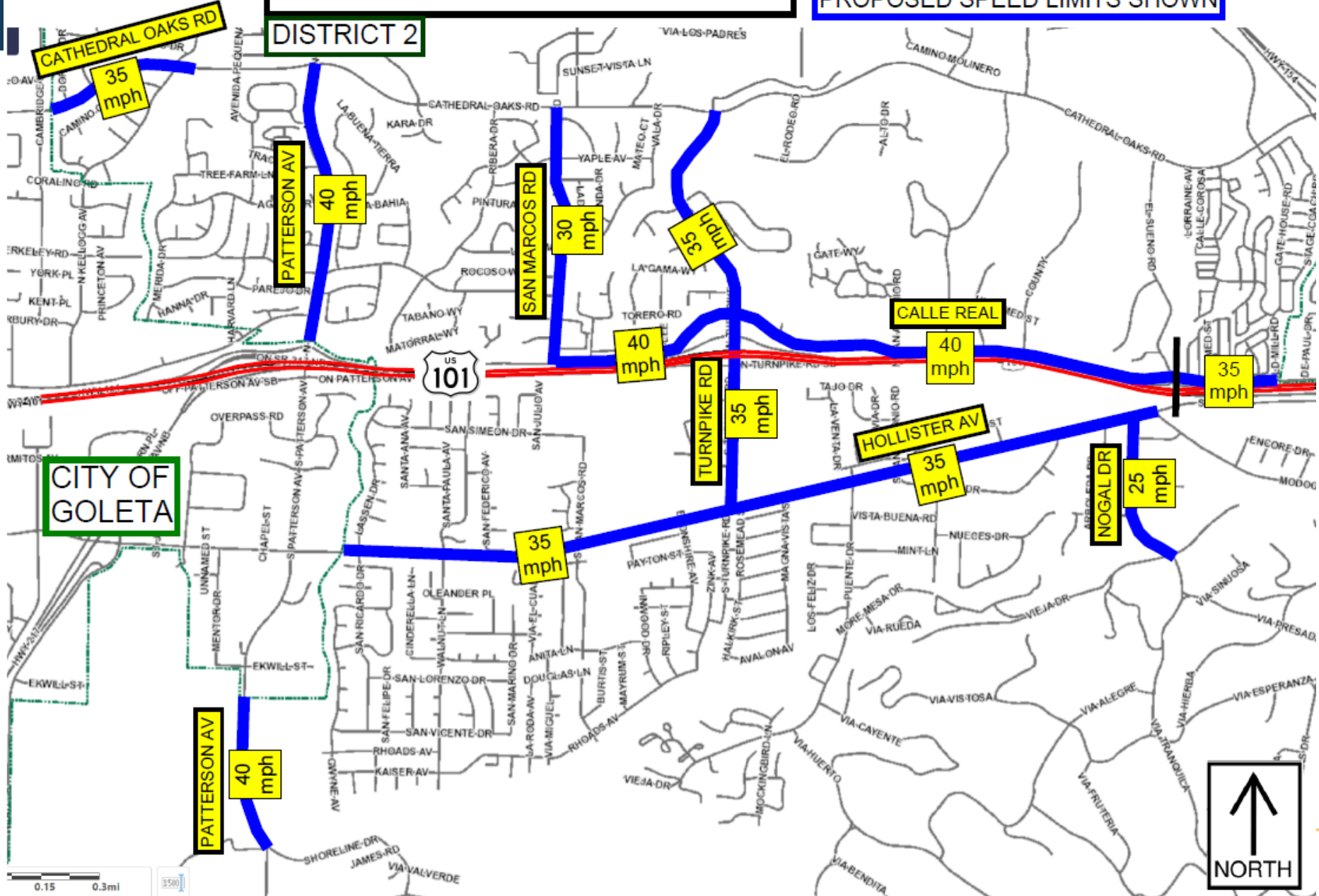


# PROPOSED SAFETY CORRIDORS

Additional 5 mph  
Speed Limit Reduction  
=====

PROPOSED SPEED LIMITS SHOWN

DISTRICT 2



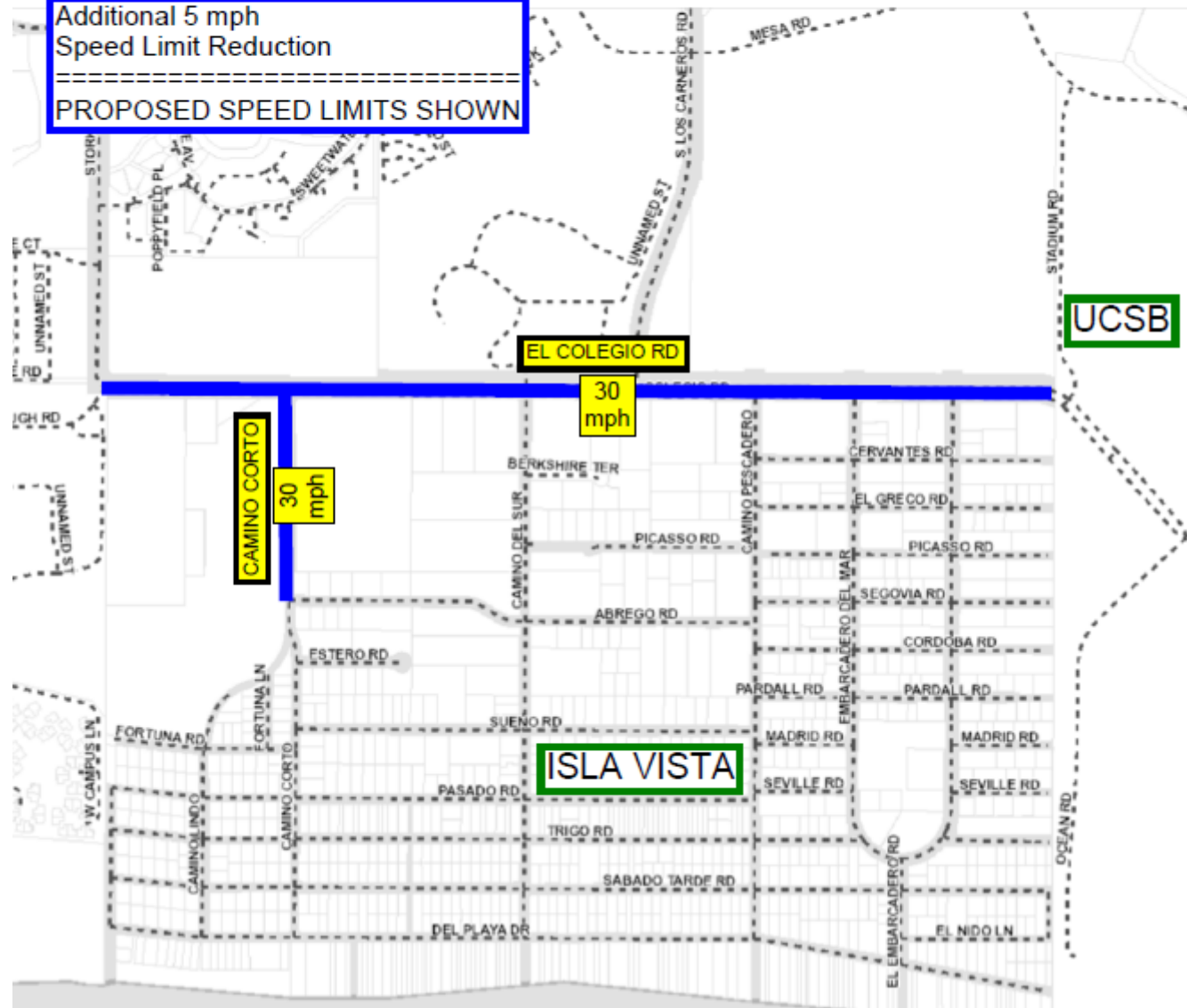
# PROPOSED SAFETY CORRIDORS

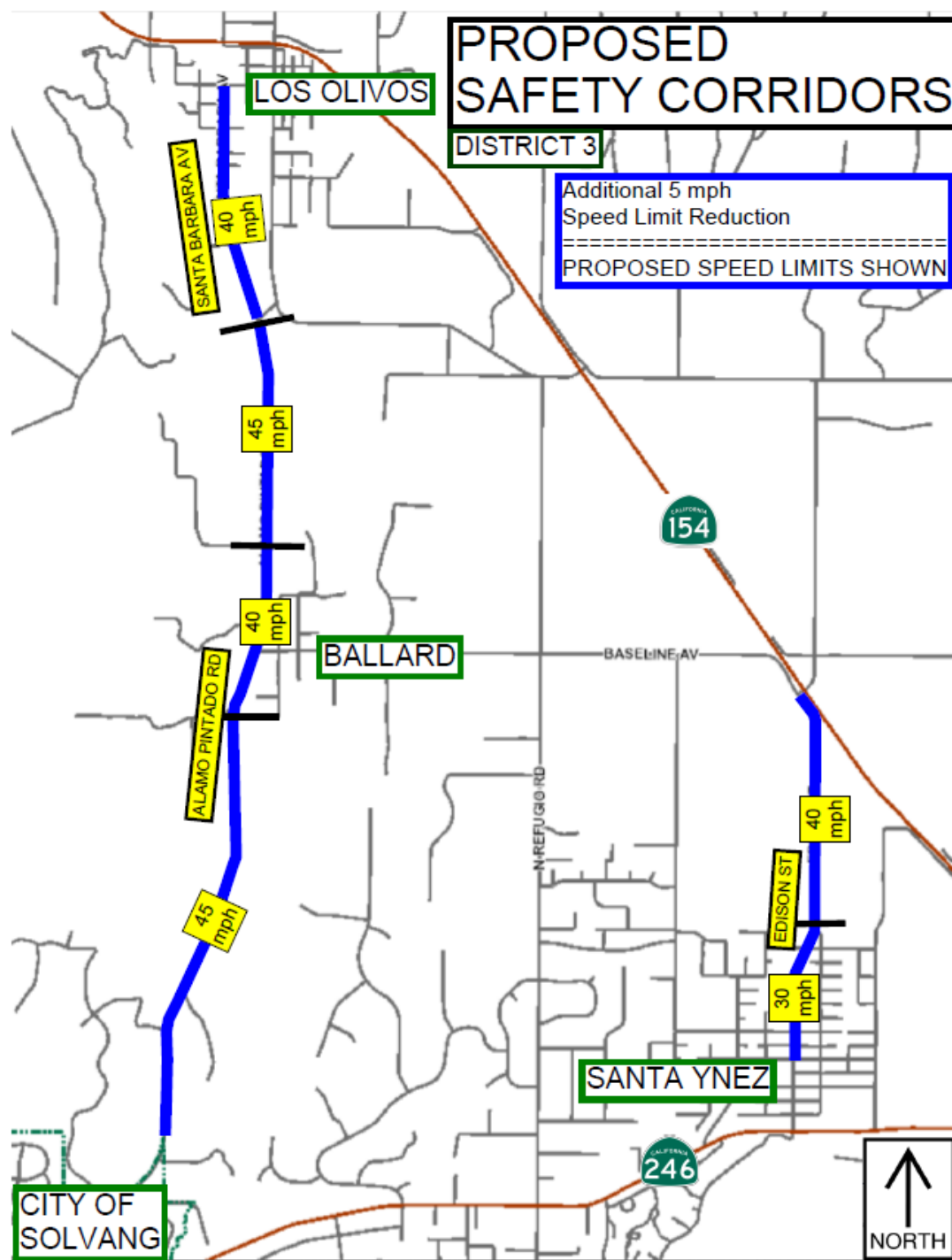
## DISTRICT 2

Additional 5 mph  
Speed Limit Reduction

=====

PROPOSED SPEED LIMITS SHOWN





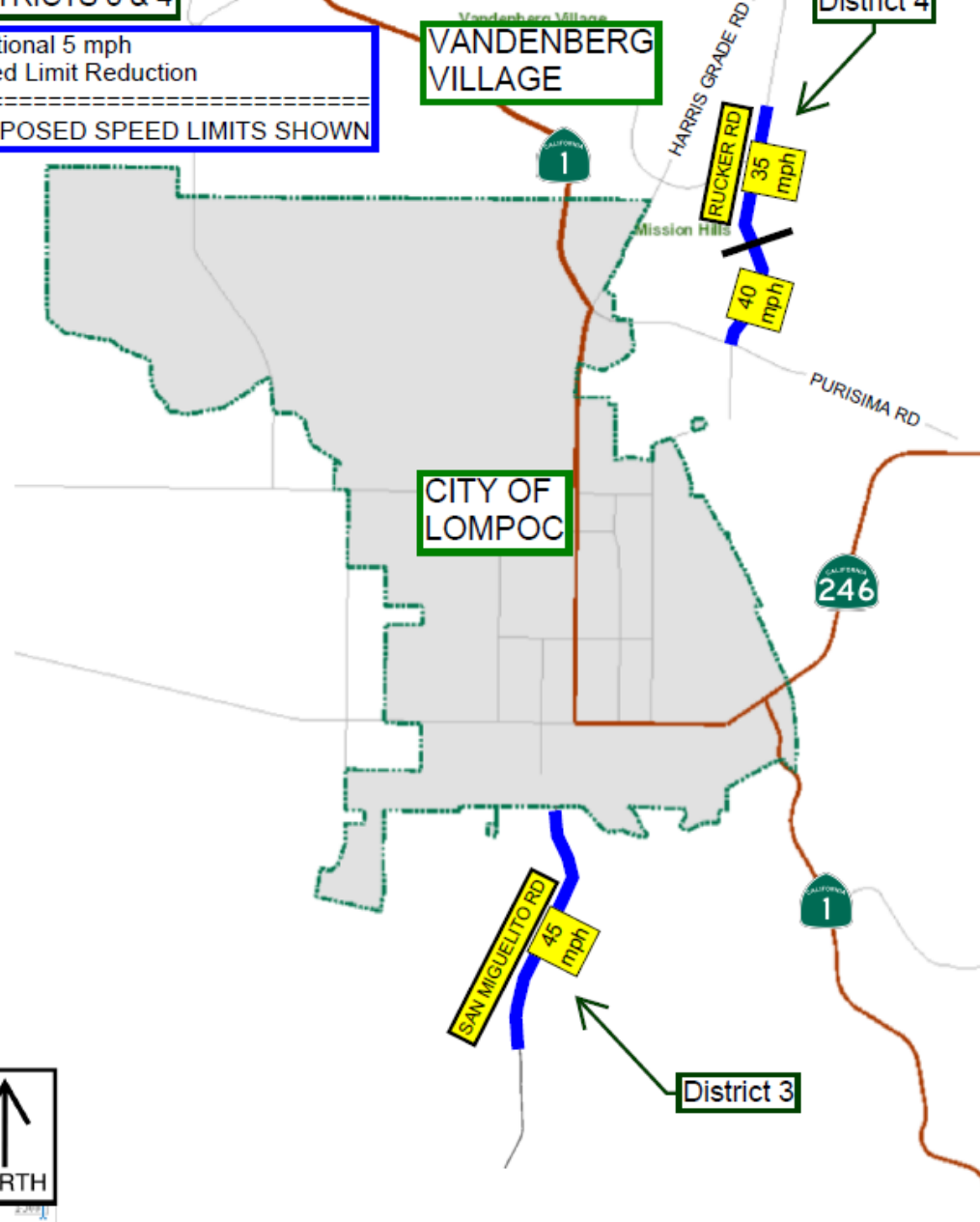


# PROPOSED SAFETY CORRIDORS

DISTRICTS 3 & 4

Additional 5 mph  
Speed Limit Reduction

PROPOSED SPEED LIMITS SHOWN



## DISTRICT 4

PROPOSED SPEED LIMITS SHOWN

CITY OF  
SANTA MARIA

-W.FOSTER, RD

LAKEVIEW RD

35  
mph

ORCUTT RD

40 mph

E.FOSTER-R

E. FOSTER-R.

UNION VALLEY PKWY

45  
mph

BRADLEY RD

40 mah

5	7
---	---

40 mph

35 mph

ORCUTT

CLARK AV

45  
mph

RICE RANCH RD

45  
mph

40  
mph





# PROPOSED SPEED LIMITS



Alamo Pintado Avenue  
from 120' east of San Marcos Av to State Route 154

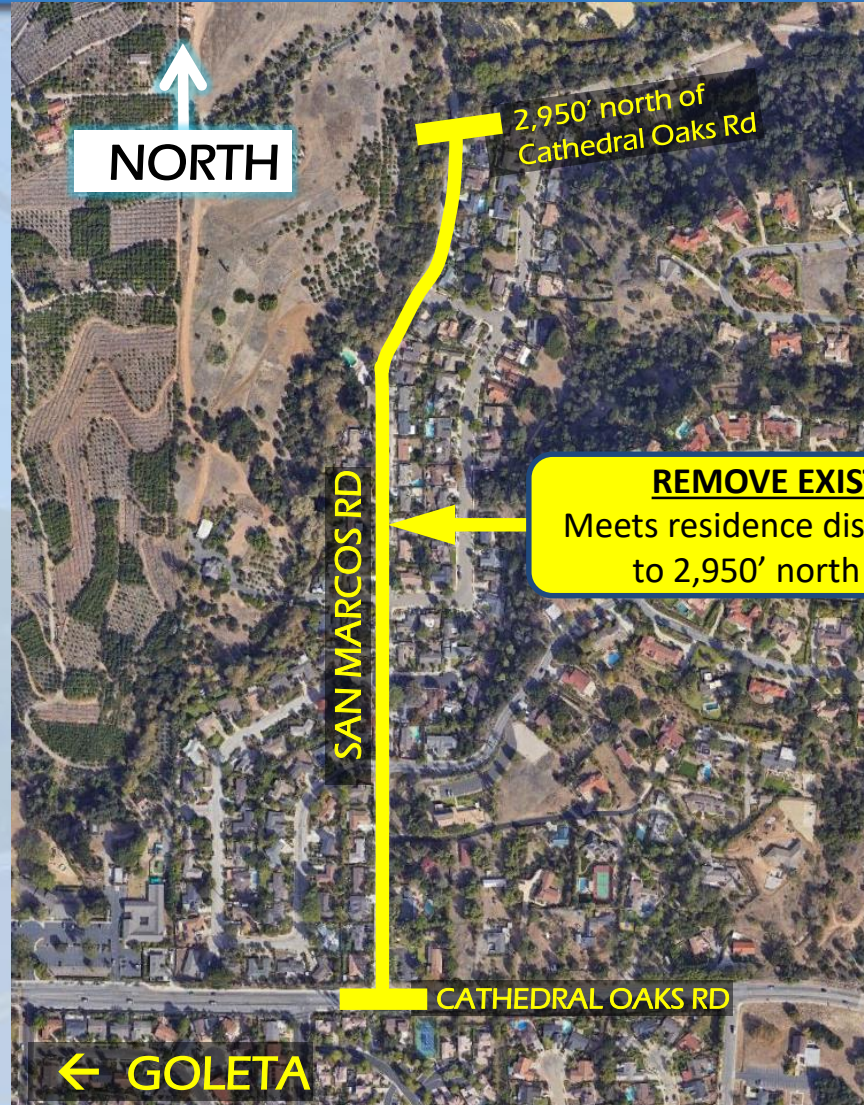






# PROPOSED SPEED LIMITS

San Marcos Road  
from Cathedral Oaks Rd to a point 2,950' north of Cathedral Oaks Rd



**REMOVE EXISTING SPEED LIMIT OF 35 MPH**

Meets residence district criteria from Cathedral Oaks Rd to 2,950' north of Cathedral Oaks Rd = 25 MPH



# PROPOSED SPEED LIMITS



Modoc Road  
from Via Senda to the Santa Barbara city limits





# PROPOSED SPEED LIMITS



## San Miguelito Road

from the Lompoc city limits to 8722' south of the Lompoc city limits\*

\*Designated as a Safety Corridor



**LOWER EXISTING SPEED LIMIT**

**FROM 55 max. to 45 MPH**

Average 85<sup>th</sup>-ile Speed = 52.5 MPH





# RECOMMENDATIONS

- a) Approve the introduction (First Reading) of an Ordinance amending Santa Barbara County Code, Chapter 23, Sections 23-15, 23-15.2, 23-15.3, 23-15.4, 23-15.5, 23-15.6, 23-15.7, 23-15.8, and 23-15.9, pertaining to speed limits on various roadways in the First, Second, Third, and Fourth Supervisorial Districts; and
- b) Read the title of the Ordinance and waive further reading of the Ordinance in full; and
- c) Continue the item to the Administrative Agenda of December 10, 2024 to consider the adoption (Second Reading) of an Ordinance amending speed limits on various roads, as follows:
  - i) Adopt the Ordinance (Second Reading) amending Santa Barbara County Code, Chapter 23, Sections 23-15, 23-15.2, 23-15.3, 23-15.4, 23-15.5, 23-15.6, 23-15.7, 23-15.8, and 23-15.9, pertaining to speed limits on various roadways in the First, Second, Third, and Fourth Supervisorial Districts; and
  - ii) Determine that amending Santa Barbara County Code, Chapter 23, Sections 23-15, 23-15.2, 23-15.3, 23-15.4, 23-15.5, 23-15.6, 23-15.7, 23-15.8, and 23-15.9, pertaining to speed limits, are for the operation and maintenance of an existing public facility, involving negligible, or no expansion of use beyond that which presently exists, and are therefore exempt from California Environmental Quality Act pursuant to 14 CCR 15301(c), and approve and direct staff to file the attached Notice of Exemption on that basis.

The background of the slide is a photograph of a two-lane road with a yellow center line, curving to the right. On the right side of the road, there is a white speed limit sign with black text that reads "SPEED LIMIT 40". The sign is mounted on a metal post. In the background, there are green hills and some utility poles with power lines. The entire image is overlaid with a semi-transparent blue filter.

# THANK YOU!