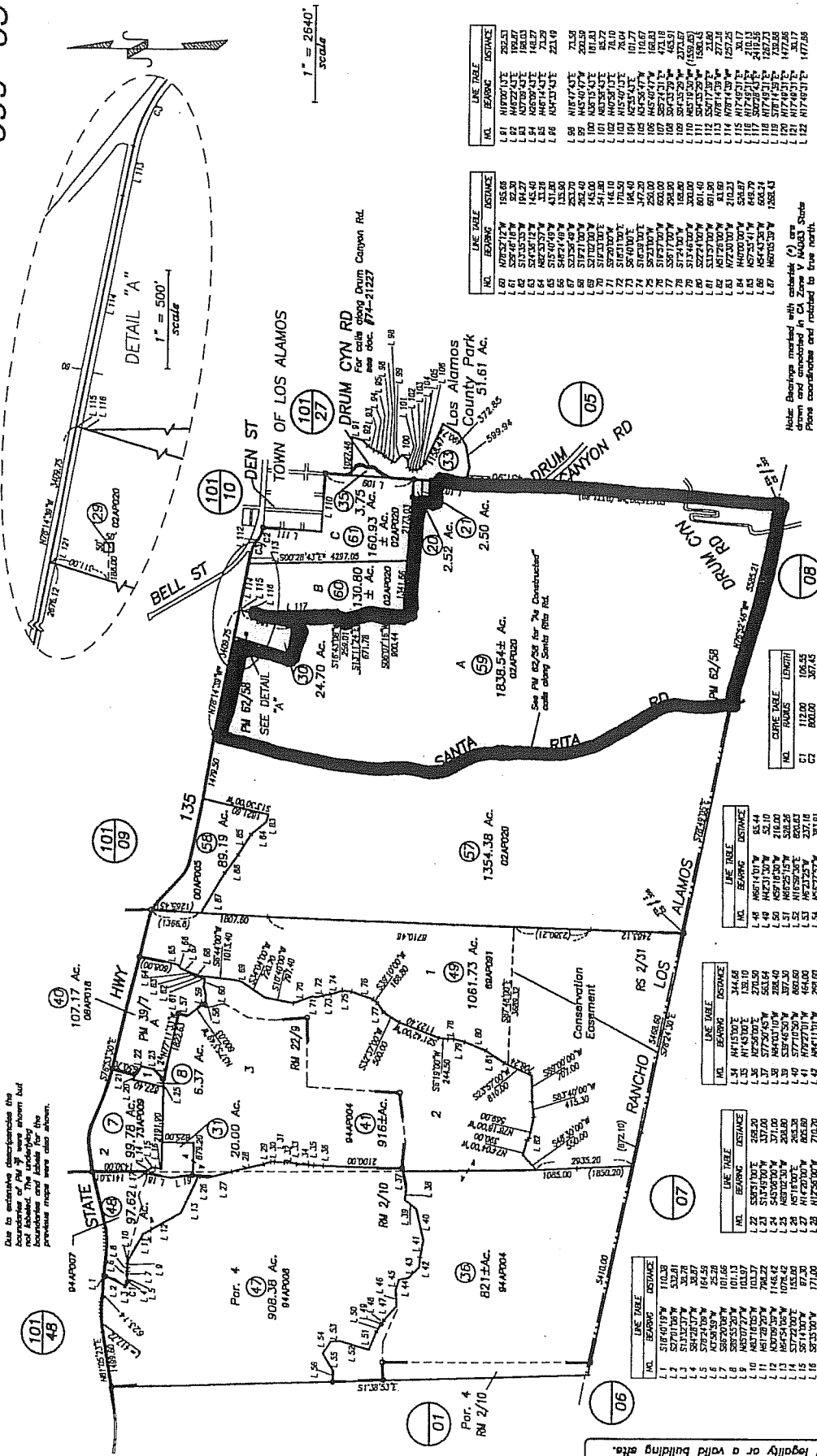


08 AGR-00000-00042

POR. RANCHO LOS ALAMOS

099-03



Due to extensive descriptions the boundaries of RM's were shown but not labeled. The underlying AC's are shown in the above. Professional engineer's name also shown.

1" = 2640' scale

1" = 500' scale

NOTICE
Assessor's Parcels are for tax assessment purposes only and do not indicate either parcel legality or a valid building etc.

LINE NO.	BEARING	DISTANCE
L1	S18°10'19"W	110.38
L2	S77°01'05"W	532.81
L3	S82°01'05"W	38.07
L4	S82°01'05"W	38.07
L5	S72°21'05"W	161.55
L6	N75°58'55"W	101.06
L7	N75°58'55"W	101.06
L8	N53°37'27"W	103.37
L9	N53°37'27"W	103.37
L10	N53°37'27"W	103.37
L11	N53°37'27"W	103.37
L12	N53°37'27"W	103.37
L13	N53°37'27"W	103.37
L14	N53°37'27"W	103.37
L15	N53°37'27"W	103.37
L16	N53°37'27"W	103.37
L17	N53°37'27"W	103.37
L18	N53°37'27"W	103.37
L19	N53°37'27"W	103.37
L20	N53°37'27"W	103.37
L21	N53°37'27"W	103.37

LINE NO.	BEARING	DISTANCE
L22	S82°01'05"W	228.20
L23	S77°01'05"W	532.81
L24	S82°01'05"W	38.07
L25	S82°01'05"W	38.07
L26	S72°21'05"W	161.55
L27	N75°58'55"W	101.06
L28	N75°58'55"W	101.06
L29	N53°37'27"W	103.37
L30	N53°37'27"W	103.37
L31	N53°37'27"W	103.37
L32	N53°37'27"W	103.37
L33	N53°37'27"W	103.37
L34	N53°37'27"W	103.37
L35	N53°37'27"W	103.37
L36	N53°37'27"W	103.37
L37	N53°37'27"W	103.37
L38	N53°37'27"W	103.37
L39	N53°37'27"W	103.37
L40	N53°37'27"W	103.37

LINE NO.	BEARING	DISTANCE
L41	N53°37'27"W	103.37
L42	N53°37'27"W	103.37
L43	N53°37'27"W	103.37
L44	N53°37'27"W	103.37
L45	N53°37'27"W	103.37
L46	N53°37'27"W	103.37
L47	N53°37'27"W	103.37
L48	N53°37'27"W	103.37
L49	N53°37'27"W	103.37
L50	N53°37'27"W	103.37
L51	N53°37'27"W	103.37
L52	N53°37'27"W	103.37
L53	N53°37'27"W	103.37
L54	N53°37'27"W	103.37
L55	N53°37'27"W	103.37
L56	N53°37'27"W	103.37
L57	N53°37'27"W	103.37
L58	N53°37'27"W	103.37
L59	N53°37'27"W	103.37

LINE NO.	BEARING	DISTANCE
L60	N53°37'27"W	103.37
L61	N53°37'27"W	103.37
L62	N53°37'27"W	103.37
L63	N53°37'27"W	103.37
L64	N53°37'27"W	103.37
L65	N53°37'27"W	103.37
L66	N53°37'27"W	103.37
L67	N53°37'27"W	103.37
L68	N53°37'27"W	103.37
L69	N53°37'27"W	103.37
L70	N53°37'27"W	103.37
L71	N53°37'27"W	103.37
L72	N53°37'27"W	103.37
L73	N53°37'27"W	103.37
L74	N53°37'27"W	103.37
L75	N53°37'27"W	103.37
L76	N53°37'27"W	103.37
L77	N53°37'27"W	103.37
L78	N53°37'27"W	103.37
L79	N53°37'27"W	103.37
L80	N53°37'27"W	103.37

LINE NO.	BEARING	DISTANCE
L81	N53°37'27"W	103.37
L82	N53°37'27"W	103.37
L83	N53°37'27"W	103.37
L84	N53°37'27"W	103.37
L85	N53°37'27"W	103.37
L86	N53°37'27"W	103.37
L87	N53°37'27"W	103.37
L88	N53°37'27"W	103.37
L89	N53°37'27"W	103.37
L90	N53°37'27"W	103.37
L91	N53°37'27"W	103.37
L92	N53°37'27"W	103.37
L93	N53°37'27"W	103.37
L94	N53°37'27"W	103.37
L95	N53°37'27"W	103.37
L96	N53°37'27"W	103.37
L97	N53°37'27"W	103.37
L98	N53°37'27"W	103.37
L99	N53°37'27"W	103.37
L100	N53°37'27"W	103.37

LINE NO.	BEARING	DISTANCE
L101	N53°37'27"W	103.37
L102	N53°37'27"W	103.37
L103	N53°37'27"W	103.37
L104	N53°37'27"W	103.37
L105	N53°37'27"W	103.37
L106	N53°37'27"W	103.37
L107	N53°37'27"W	103.37
L108	N53°37'27"W	103.37
L109	N53°37'27"W	103.37
L110	N53°37'27"W	103.37
L111	N53°37'27"W	103.37
L112	N53°37'27"W	103.37
L113	N53°37'27"W	103.37
L114	N53°37'27"W	103.37
L115	N53°37'27"W	103.37
L116	N53°37'27"W	103.37
L117	N53°37'27"W	103.37
L118	N53°37'27"W	103.37
L119	N53°37'27"W	103.37
L120	N53°37'27"W	103.37
L121	N53°37'27"W	103.37
L122	N53°37'27"W	103.37

Note: Bearings marked with asterisk (*) are from and computed in CA Zone Y NAD83. State Plane coordinates and rounded to four decimal.

Assessor's Map Bk, 099-Pg, 03
County of Santa Barbara, Calif.

05/27/1932 R.M. Bk. 22 , Pg. 9 , Tract "Partition of Lot 3 of the Orena Rancho"
04/28/1913 R.M. Bk. 2 , Pg. 31-32 , Tract "Orena Portion of the Los Alamos Rancho"
10/00/1906 R.M. Bk. 2 , Pg. 10 , Tract "Juan B. Careaga of the Los Alamos Rancho"

07/10 Corrected Plat No. error on 40