



Board of Supervisors The Novel Coronavirus (COVID-19)

February 2, 2021

Briefing Topics

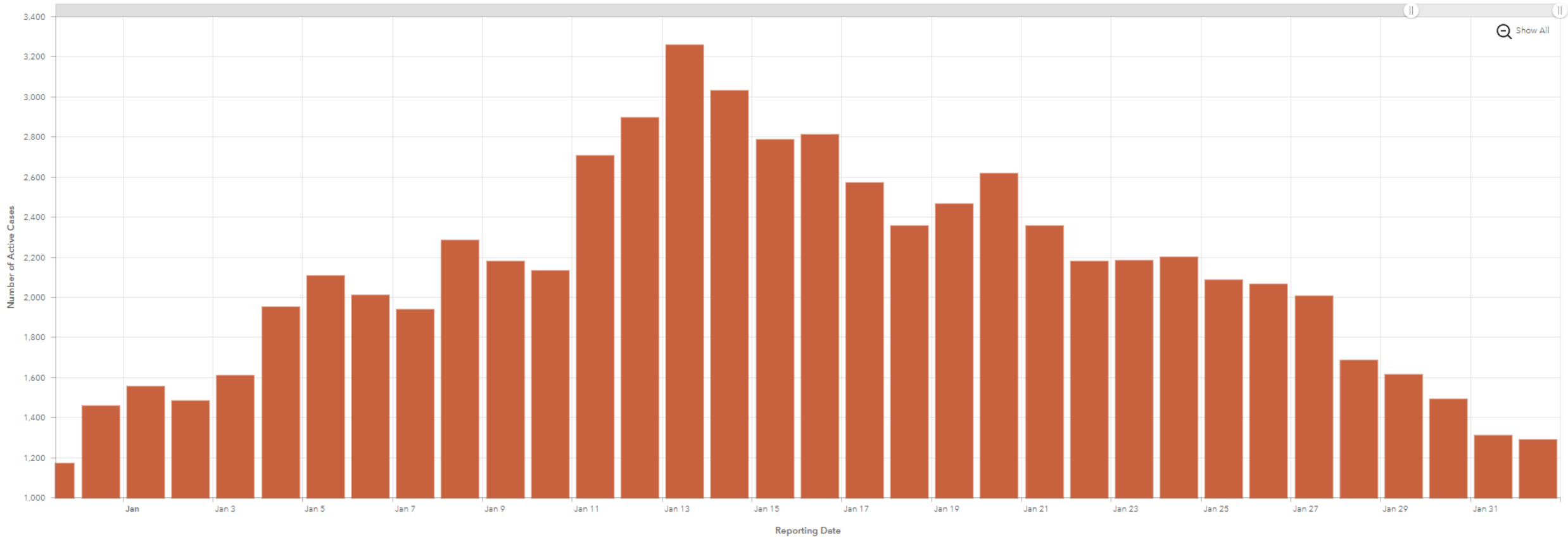
- Santa Barbara County COVID-19 Data
- Blueprint Metrics
- Vaccination Efforts
- School Plans
- Consideration of Acceptance of State Emergency Rental Assistance Program and Submission of Expression of Intent



Santa Barbara County COVID-19 Data

Daily Count of Active Cases

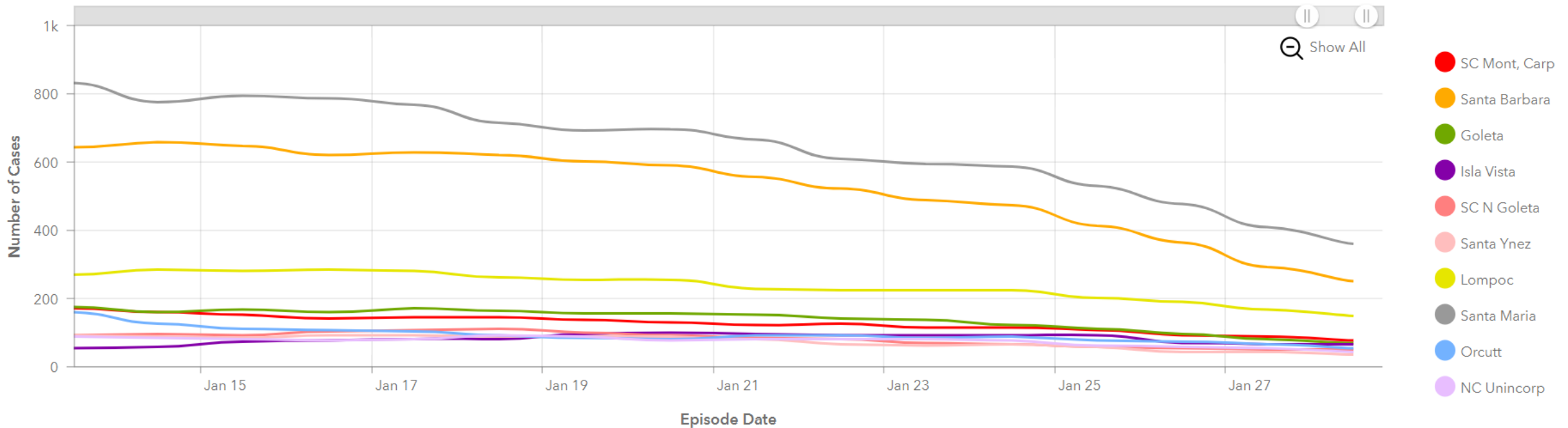
Includes Lompoc Federal Correctional Complex (FCC)



Santa Barbara County COVID-19 Data

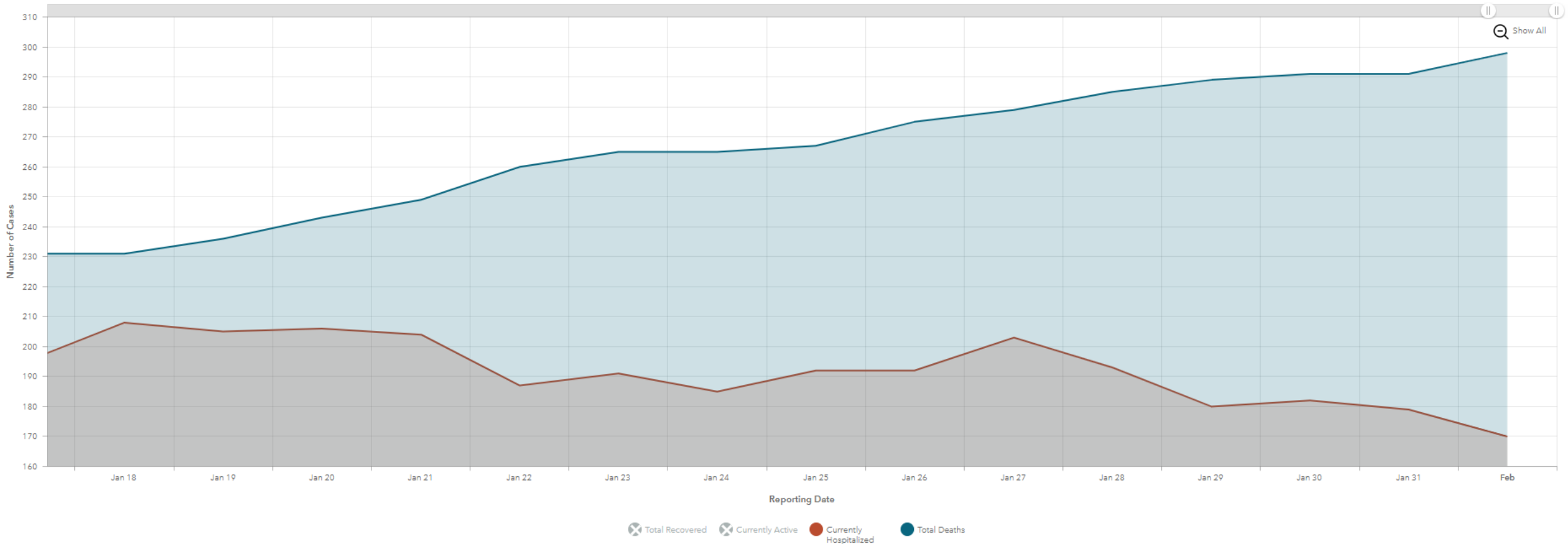
7-Day Rolling Sum of New Cases by Area

Not including Lompoc Federal Correctional Complex



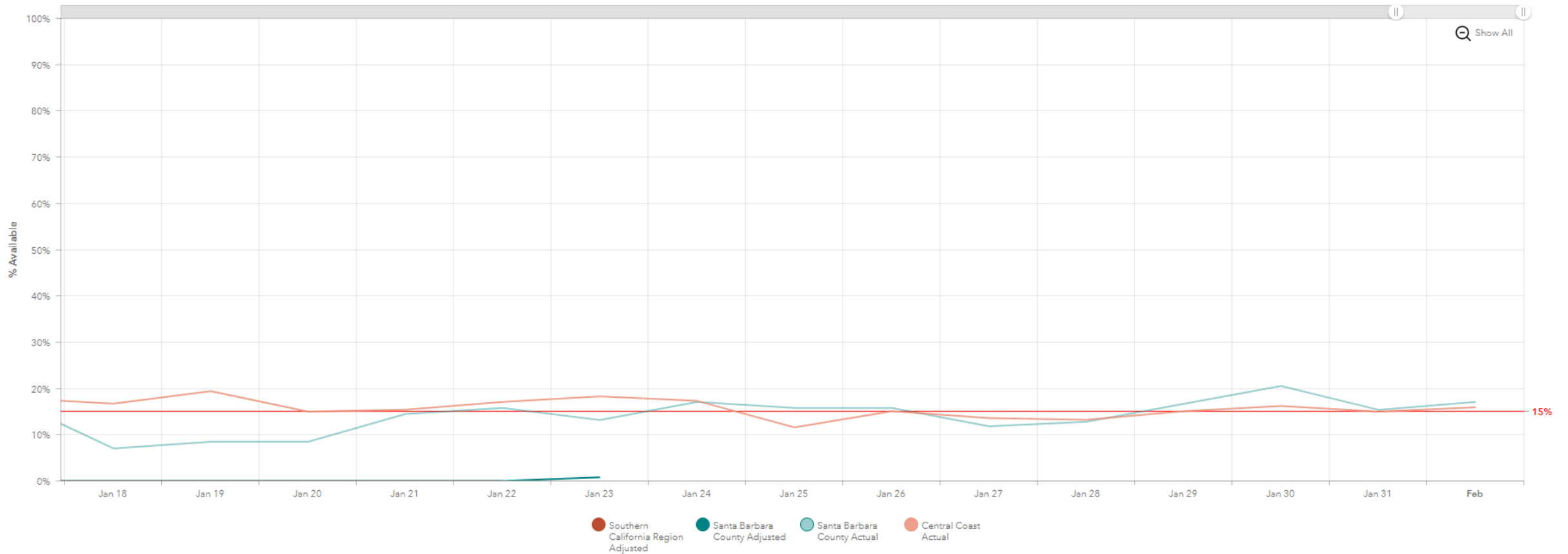
Santa Barbara County COVID-19 Data

Case Status



Santa Barbara County COVID-19 Data

Staffed Adult ICU Bed Availability
Regional Stay at Home Order lifted 1/25. Adjusted ICU not reported after 1/22



ANTICIPATED CDPH Monitoring Status: 2/2/21

Santa Barbara County metrics

47.2

Adjusted case rate for tier assignment

New cases per day per 100K (unadjusted)

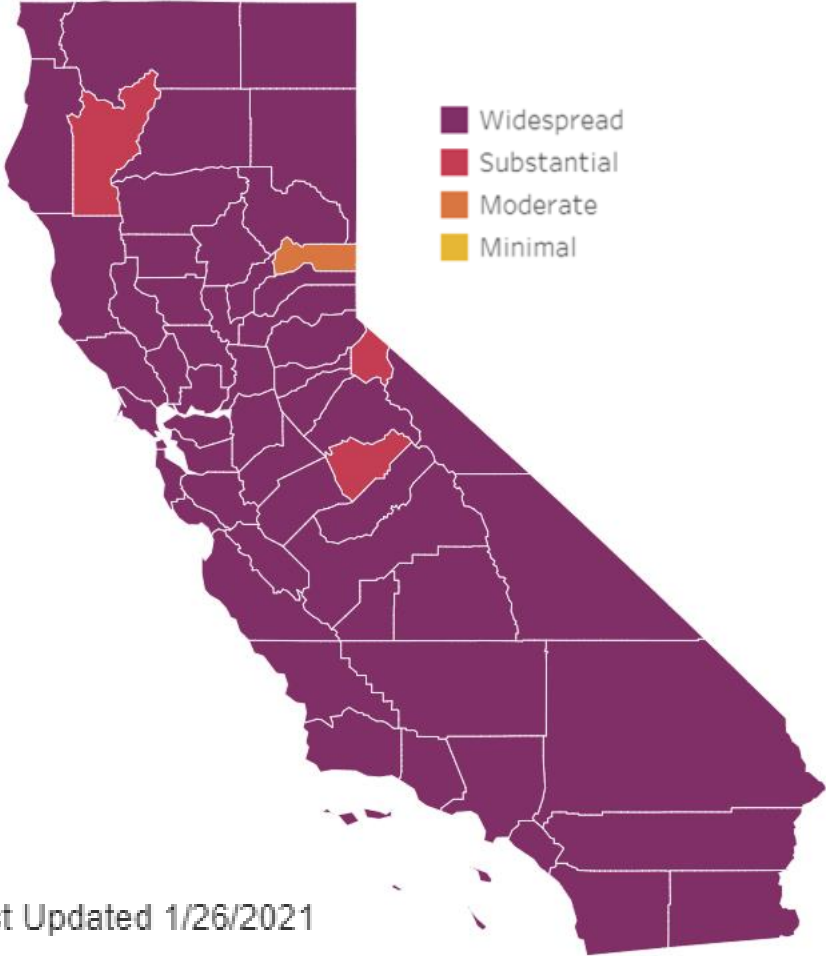
63.8

Positivity rate

11.2

Health Equity Metric:

16.7



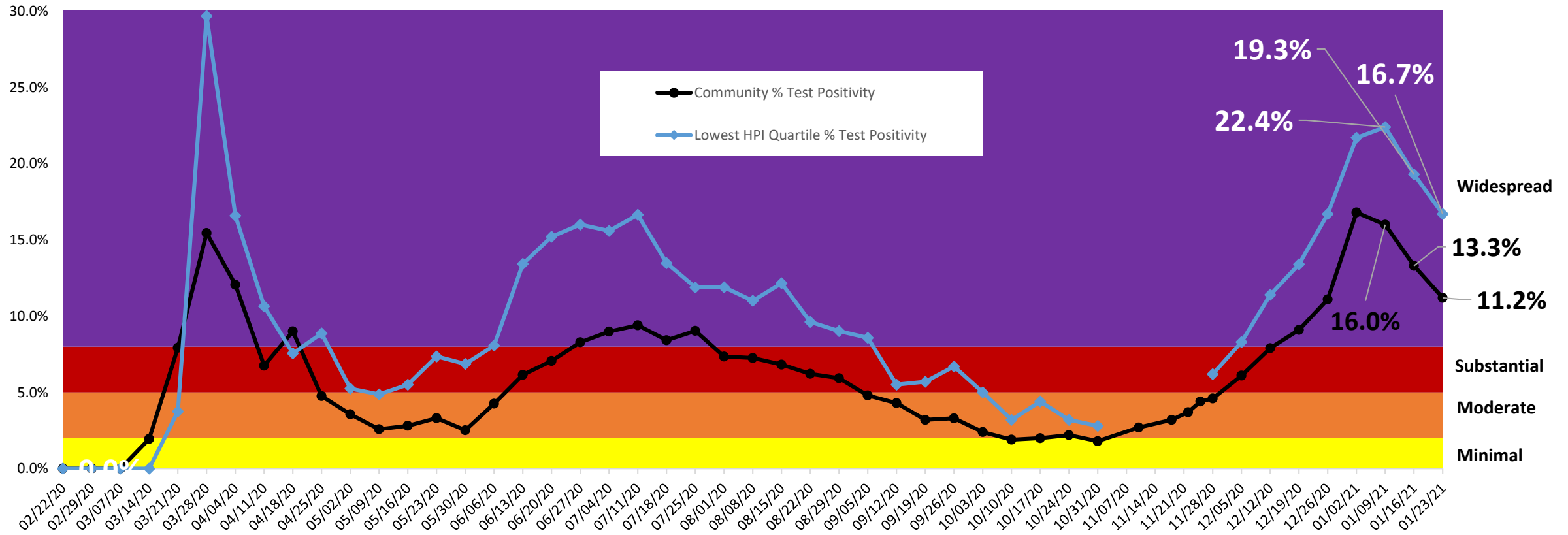
Last Updated 1/26/2021

All data and tier assignments are based on results from week ending Jan 23



ANTICIPATED: Blueprint Metrics for 2/2/21

Santa Barbara County 7-day Average Community Test Positivity Percent

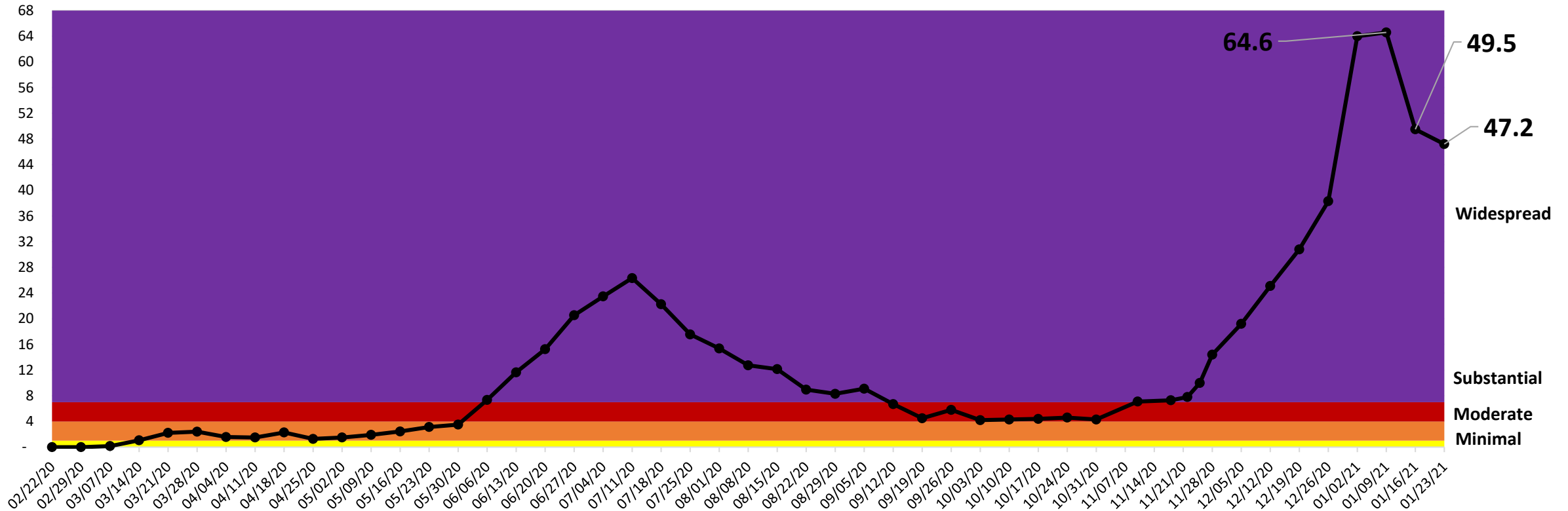


As of 11/15, CDPH changed the Case Rate and Testing Positivity metrics to reflect a 4-day lag instead of a 7-day lag. HPI data was not released the weeks with 4-day lag data. As of 11/28 data, the State reverted back to the 7-day lag.



ANTICIPATED: Blueprint Metrics for 2/2/21

Santa Barbara County 7-day Average Adjusted* Case Rate per 100,000 Community Residents



* Case rates as of 8/29 to current have been adjusted based on State metrics; As of 11/15 CDPH changed the Case Rate and Testing Positivity metrics to reflect a 4-day lag instead of a 7-day lag. As of 11/28 data, the State reverted back to the 7-day lag.

update on 2/1/21

Stopping the spread

**DON'T LET COVID-19
"TOUCH DOWN" IN YOUR HOME**

YOU	2021	COVID-19
42		0

WAYS TO SCORE POINTS AGAINST COVID-19

Distance is your best defense! Keep at least 6 feet away from anyone who doesn't live with you.

If you choose to gather:

- Keep it outdoors (Physical Distance & Masks are a must)
- Keep it small (3 households or less)
- Keep it short (less than 2 hours)

PublicHealthSBC.org

Santa Barbara County
PUBLIC Health
DEPARTMENT



Vaccine Distribution



Vaccine Distribution by City



Location	Doses	% of Doses
Carpinteria	600	1%
County Wide	10,260	20%
Lompoc	5,000	10%
Santa Barbara	22,915	44%
Santa Maria	12,600	25%
Total	51,375	100%
Marian Medical Center*	12,955+	

*As part of CDPH allocation as a Multi-County Entity



Community Provider Distribution Sites

Community Provider Distribution Sites	Doses	% of Doses
Clinics	10,880	21%
Public Health Vaccination Sites	9,820	19%
Health Care Providers	1,800	4%
Hospitals	25,375	49%
Pharmacies	3,500	7%
Total	51,375	100%



COVID-19 Vaccinations: as of 2/1/2021

Total Doses Allocated 51,375	Total Doses Ordered 51,375
Total Doses Administered 38,334	Administered 86% of received; or 75% of ordered



School Plans



School Reopening Plans

1. Lompoc Unified School District
2. Buellton Unified School District
3. Santa Barbara Unified School District
4. Goleta Unified School District
5. Vista Del Mar Union School District
6. Orcutt Union School District



**STRONGER
TOGETHER.
SAFELY APART.**



Consideration of Acceptance of State Emergency Rental Assistance Program and Submission of Expression of Intent

FEBRUARY 2, 2021

January 28, 2021 State Approval of COVID-19 Tenant Relief Act (SB91)

- Extends residential eviction protections through June 30, 2021
- Creates unified statewide mechanism to deploy the \$2.6 billion in Federal Emergency Rental Assistance program (ERAP)
- Should County accept, it would receive \$14,291,558 set aside of State Rental Assistance Program funds in addition to \$13,373,876 already received directly through the U.S. Treasury allocation
- Provides for Additional tenant protection measures
- Requires landlords to forgive 20% of accumulated rental arrears in exchange for 80% of payment through State ERAP. Landlords paid for unpaid rent from 4/1/20-3/31/21. Landlords must accept as payment in full for all rental debt for that period. Tenants required to pay 25% of rent due between 9/1/20-6/31/21

Federal Program

- 90% must be used for rent, rental arrears, utilities, utility arrears, and other housing expenses
- 10% can be used for administration, program delivery and case management
- Qualifying households must be at 80% Area Median Income (AMI), household has qualified for unemployment benefits, or attests to reduction in income due to COVID-19.
- Prioritizes households at 50% AMI with risk of homelessness
- Federal program under County/United Way administration provides for 3 month rent subsidy, up to \$6,000 per household, and emergency utility payments with option to reapply for additional 3 months for up to 15 months.
- Federal obligation deadlines: 65% by 9/30/21, expensed by 12/31/21.

State Program

- Mirrors federal program on 90% for rent, rental arrears, utilities, utility arrears, and other housing expenses
- 8.5% of State allocation can be used for administration, program delivery and case management
- Mirrors federal program, State program provides for “rounds” for 1st round is for 50% AMI, 2nd round for households impacted by COVID-19, 3rd round for households at 80% AMI
- Also prioritizes households at 50% AMI and allows for local prioritization and more specifically targets households within this category.
- State Program currently has no cap on amount of assistance per household. Both State and federal programs prioritize rent arrears for payment first.
- State obligation deadlines: 65% by 6/1/21, expensed by 8/1/21

3 Options:

1. Consolidated Program - State Administered:

- Combine the County's pending \$14.3 million funding allocation from the State with the \$13.3 million in funding already received directly from the U.S. Treasury;
- Consolidated program managed on behalf of County residents by a Community Development Financial Institution partnered with the State;
- Program criteria adheres to more restrictive State program design and deadlines; *or*

2. Consolidated Program - County Administered:

- County elects to accept \$14.3 million in State allocation – submits non-binding Expression of Intent by 2/3/21 with formal notification due to the State by 2/12/21;
- County agrees to administer County's combined share of State allocation and direct federal funding under the more restrictive State program design and deadlines; *or*

3. Hybrid Program Delivery Model: *(Recommended)*

- State administers the \$14.3 million allocation aimed at County residents under their program criteria;
- County administers \$13.3 million in direct federal funding for a local rental assistance program consistent with the more broad federal guidelines;
- County program able to be implemented more rapidly, getting funding to those in need sooner.