



Avian Flu Pandemic Strategy

County of Santa Barbara

History of Pandemics

Swine Flu
"Scare"
1977

Hong Kong Flu
1968

Spanish Flu
1918

20th Century Pandemics

1976
Russian Flu
"Scare"

1957
Asian Flu



Estimated deaths: > 40 million
people world-wide

Coordinating Response

What are the Goals?

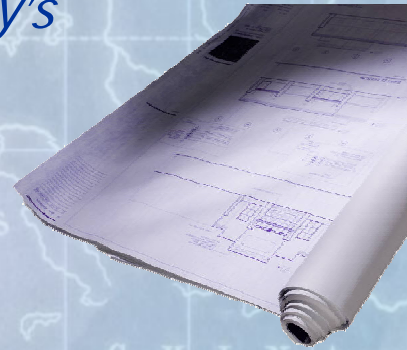
- ✓ *Limit the number of illnesses and deaths*
- ✓ *Preserve continuity of essential government functions*
- ✓ *Minimize social disruption*
- ✓ *Reduce economic losses*



Coordinating Response

What is the Plan?

A blueprint for continuity of government & protection of the County's citizens during a flu pandemic



Who is Involved?

9,250 Staff Hours

75 Staff Members

21 County Departments



The Teams



Teams and Departments

TEAMS



PARTICIPANTS



What Makes a Project Team?

**Bi-weekly
Leader Meetings**



**Weekly CEO
Briefings**

Cross-Communication



**An Overall Strategy
w/SOP's**



**A Comprehensive
Approach**



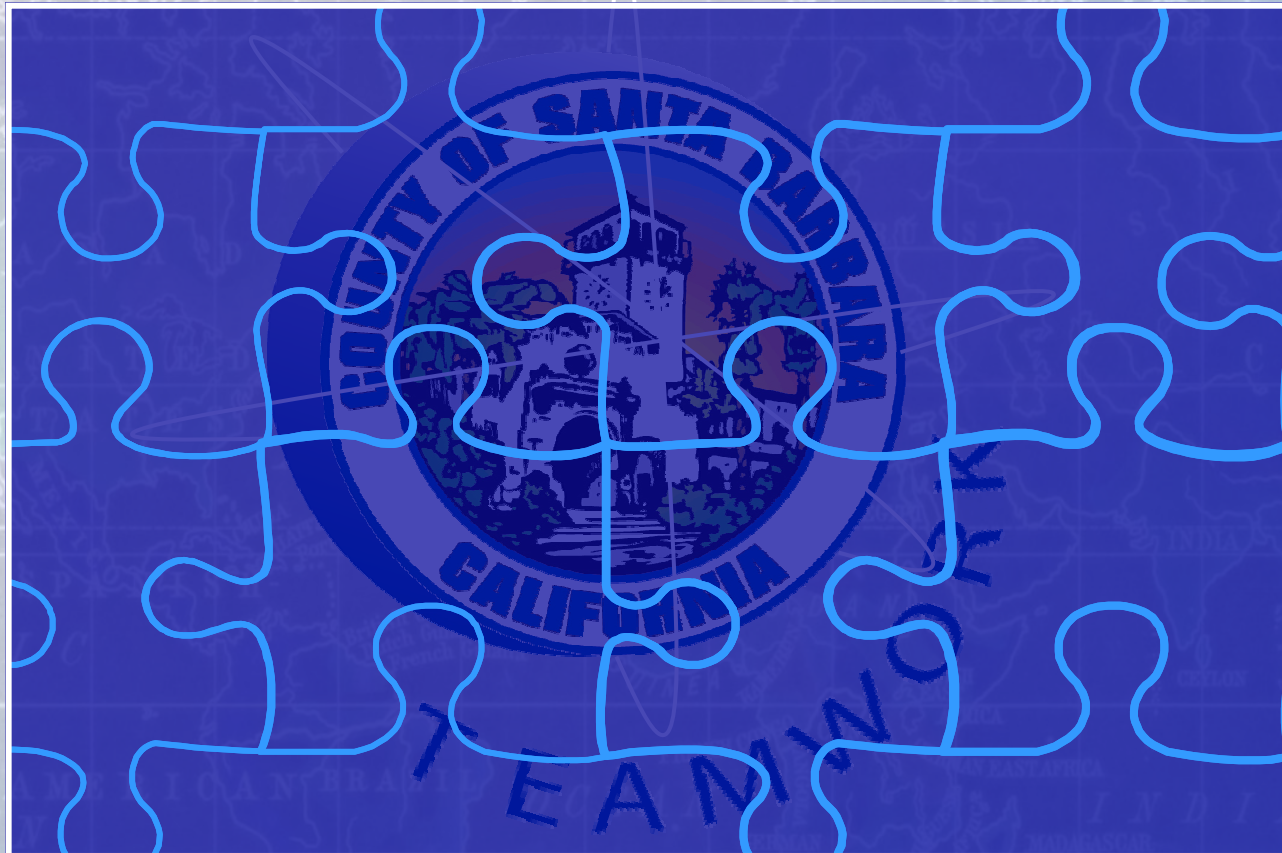
**Community Involvement
(Red Cross, Direct Relief Int'l, etc.)**



7-12 Members



What Makes Project Team?



A Comprehensive Plan

“Responding Together”

The Santa Barbara County Pandemic Influenza Strategy Plan

It Is Not
The Flu As Usual



March 2007



Responding Together™ Pandemic Influenza Strategy Plan

Critical Capacity Modules

Module 3 Limiting the Spread of Disease

Introduction
Limiting the Spread of Disease is a critical capacity required to minimize morbidity and mortality in Santa Barbara County. After a pandemic strain of influenza virus and/or an avian strain begins circulating in the community, individual and community cooperation with implementation of disease control measures will be necessary to limit the disease spread. These control measures include adherence to infection control guidelines, personal protective equipment guidelines for healthcare and emergency responders, social distancing strategies such as school closures and cancellation of large public gatherings, travel restrictions and online live education.

Planning Assumptions
Due to the uncertainty about the trajectory and ultimate impact of pandemic flu in Santa Barbara County, following assumptions underlie the scope of this preparedness and response plan. These assumptions include some scenarios and impacts in the context of Santa Barbara County.

1. An influenza pandemic will result in rapid spread of infection with waves throughout the world. Communities across the state and the country may be impacted simultaneously. Santa Barbara County will not be able to respond in a timely or effective manner.

12. Communications – identifies and meets the hardware needs and requirements of the overall pandemic response and provides the communications equipment and information technology necessary to maintain redundant communication systems during all phases of a pandemic.

13. Resources, People, Places & Equipment – addresses the logistical component (people, places, equipment) needed to support the County as it mobilizes the response to a pandemic.

14. Command Structure – following established guidelines under the State's Standardized Emergency Management System (SEMS) and the National Incident Management System (NIMS), this module addresses the County's command structure during a pandemic response.

"County government has a significant leadership role in pandemic influenza response."

The Plan identifies each COM, services operational details, and, as appropriate, the actions are organized by pandemic period. Tools are also provided that will be implemented in the event that the plan is activated.

Conclusion
County government has a significant leadership role in pandemic influenza response. Development of the Plan through the coordination efforts of its county employees and partner agencies, has established a solid foundation for improved coordination and intervention by all participants, not only in response to a pandemic but for all major disaster responses. Implementation of this plan enables the County's requirements to fulfill important pre-identified roles and responsibilities for a coordinated strategy aimed at protecting the public's health and minimizing the impact of a pandemic influenza in Santa Barbara County.



7-



The Critical Capacity Modules

Critical Capacity Modules

Module 1

Legal Authority

Critical Capacity Modules

Module 2

Surveillance

Critical Capacity Modules

Module 3

Limiting the Spread of Disease

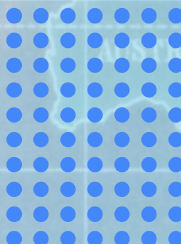
Critical Capacity Modules

Module 4

Risk Communication and Public Education



Each Critical Capacity Module encompasses a set of actions that are critical for effective preparedness & response



RD1

make stand out more.
Rose Davis, 2/26/2007

The Critical Capacity Modules

Critical Capacity Modules

Module 5

Healthcare Systems

Critical Capacity Modules

Module 6

Clinical Guidelines and Disease Management

Critical Capacity Modules

Module 7

Alcohol, Drug and Mental Health Psychosocial Support

Critical Capacity Modules

Module 8

Security and Law Enforcement



The Modules provide detailed operational procedures

RD4

make stand out more.
Rose Davis, 2/26/2007

The Critical Capacity Modules

Critical Capacity Modules

Module 9

Preparing Essential Services for Continuity of Operations

Critical Capacity Modules

Module 10

Decedent and Coroner Issues

Critical Capacity Modules

Module 11

Volunteers and Medical Reserve Corps

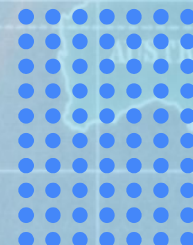
Critical Capacity Modules

Module 12

Communications and Information Technology



The Modules provide appropriate actions organized by pandemic period, alert or pandemic



RD7

make stand out more.
Rose Davis, 2/26/2007

The Critical Capacity Modules

Critical Capacity Modules

Module 13

*Resources,
People,
Places and
Equipment*

Critical Capacity Modules

Module 14

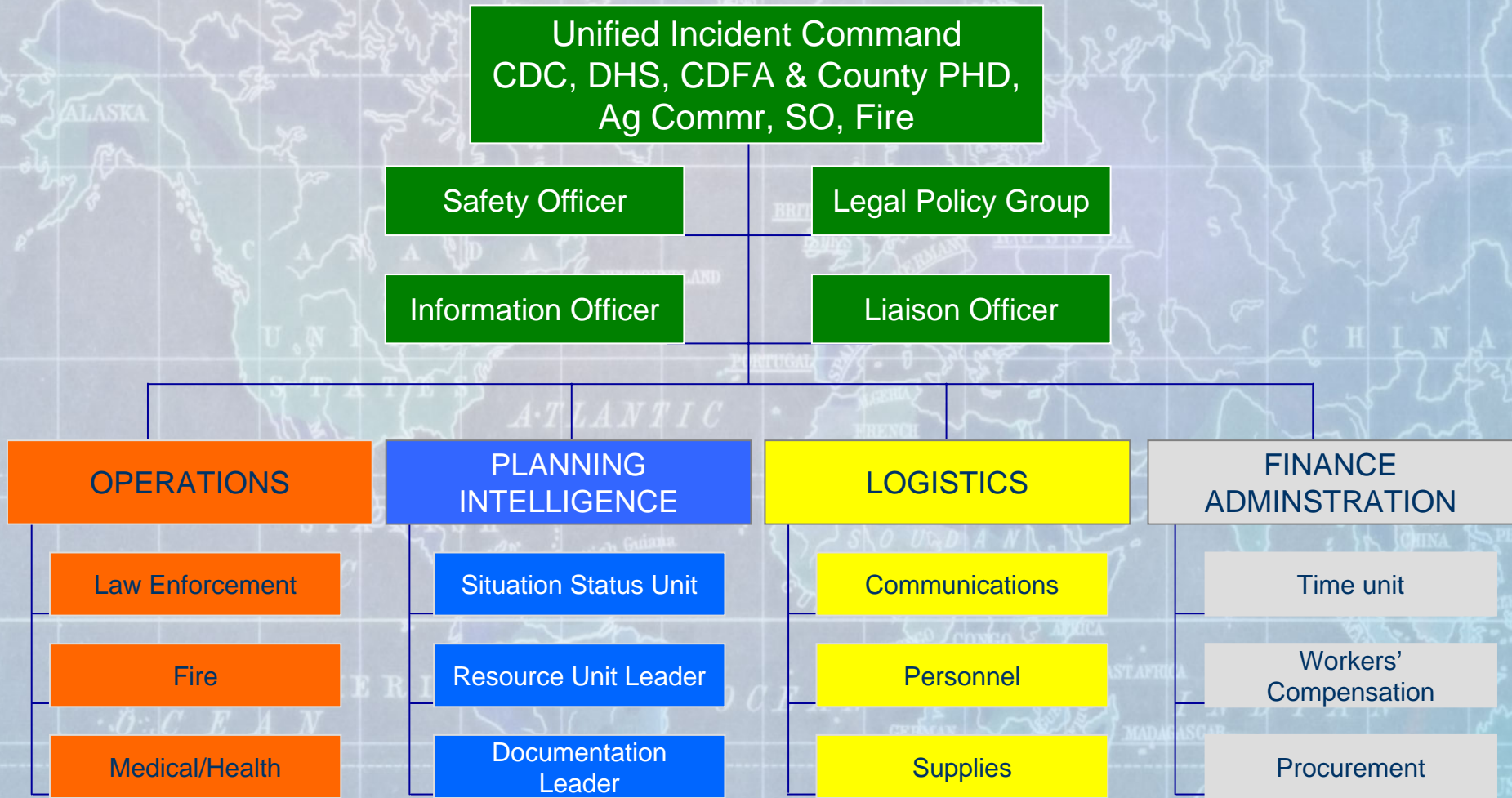
*Command
Structure*

**The Modules
include tools to
be implemented
as needed**

RD8

make stand out more.
Rose Davis, 2/26/2007

Command Structure



The Pandemic Plan

“ A coordinated strategy aimed at protecting the public’s health and minimizing the impact of a pandemic influenza in Santa Barbara County. ”

