

PHF Governing Board Report

Psychiatric Health Facility Update

November 2023



SANTA BARBARA COUNTY
DEPARTMENT OF
Behavioral Wellness
A System of Care and Recovery

What is the Psychiatric Health Facility (PHF)?

16 bed acute psychiatric inpatient hospital dedicated to serve Santa Barbara County residents. The facility is LPS designated to accommodate individuals on 5150 holds as well as those coming in voluntarily and on conservatorship.

The PHF is one of only 2 “Super-PHF’s” in the State of California, distinguished from other Psychiatric Health Facilities by their ability to receive Medicare reimbursement.



A Day at the PHF

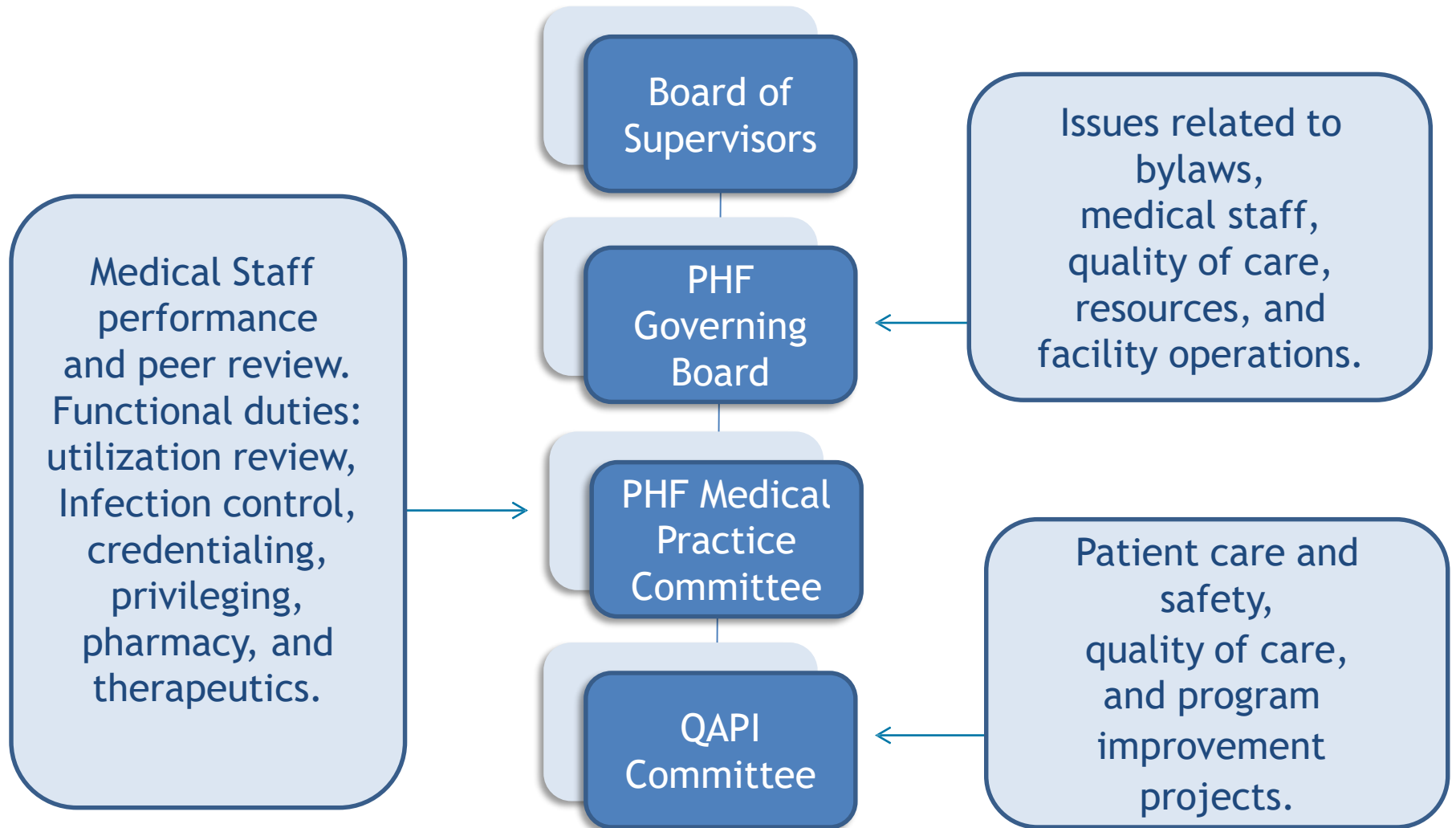
- Daily Multidisciplinary Team meeting
- Structured meals and snack time
- Outside recreational time
- Community meeting with patients in morning and evening
- Multiple holistic group activities including the following:



- Daily doctor (MD) rounds
- Client centered treatment planning
- Nutrition education
- Exercise-equipment and groups
- Sobriety support/ Alcoholics Anonymous
- Anger management
- Music and art therapy
- Stress management
- Medication education
- Legal issues/know your rights
- Patients' Rights Group



PHF Governing Board Structure



PHF Governing Board Members

Tanja Heitman, *Assistant County Executive Officer, Health and Human Services and Public Safety, CEO; Chair*

Vincent Wasilewski, *Chief Deputy of Custody Operations, Sheriff's Office; Vice Chair*

Supervisor Steve Lavagnino, *Santa Barbara County Board of Supervisors, 5th District*

Supervisor Laura Capps, *Santa Barbara County Board of Supervisors, 2nd District; Alternate*

Mouhanad Hammami, *Director, Public Health Department*

Kirk Lagerquist, *Director, General Services Department*

Arlene Diaz, *Public Services Division Chief, Office of the Public Administrator - Public Guardian*



SANTA BARBARA COUNTY
DEPARTMENT OF
Behavioral Wellness
A System of Care and Recovery

PHF Governing Board (PGB) Agenda

- ❑ The PGB generally meets monthly. Agenda items include but are not limited to:
 - **Report on Quality Indicators**
 - **Policies and Procedures (P&Ps)**
 - **Medical Staff Bylaws**
 - **Medical Staff Credentialing and Privileging**
 - **Contract Monitoring**
 - **Licensing Survey Reviews**
 - **Patient Satisfaction Survey**



Quality Assessment and Performance Improvement (QAPI) Quality Indicators

The QAPI Committee is responsible to maintain an effective, ongoing, hospital-wide, data-driven quality assessment and performance improvement program.

The QAPI Committee, along with the Medical Practice Committee, are both subject to the ultimate authority of the PGB.

The committee has monthly reports on quality indicators related to health outcomes, patient safety, quality of patient care, and utilization review, as well as facility services.

The committee oversees implementation of any corrective actions and reports progress of same to the PHF Medical Practice Committee and the PHF Governing Board.

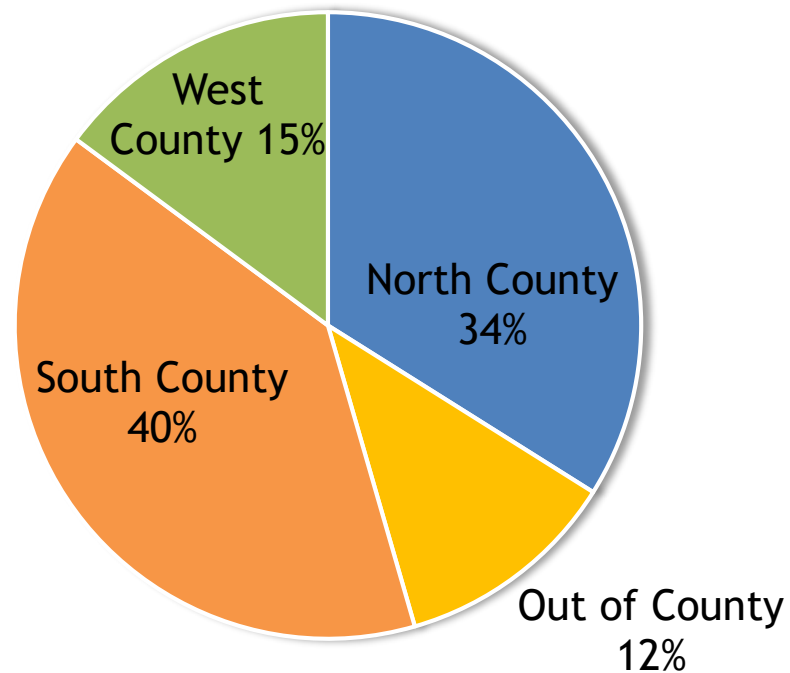


Inpatient Hospitalization Demographics

CLIENT REGION OF RESIDENCE

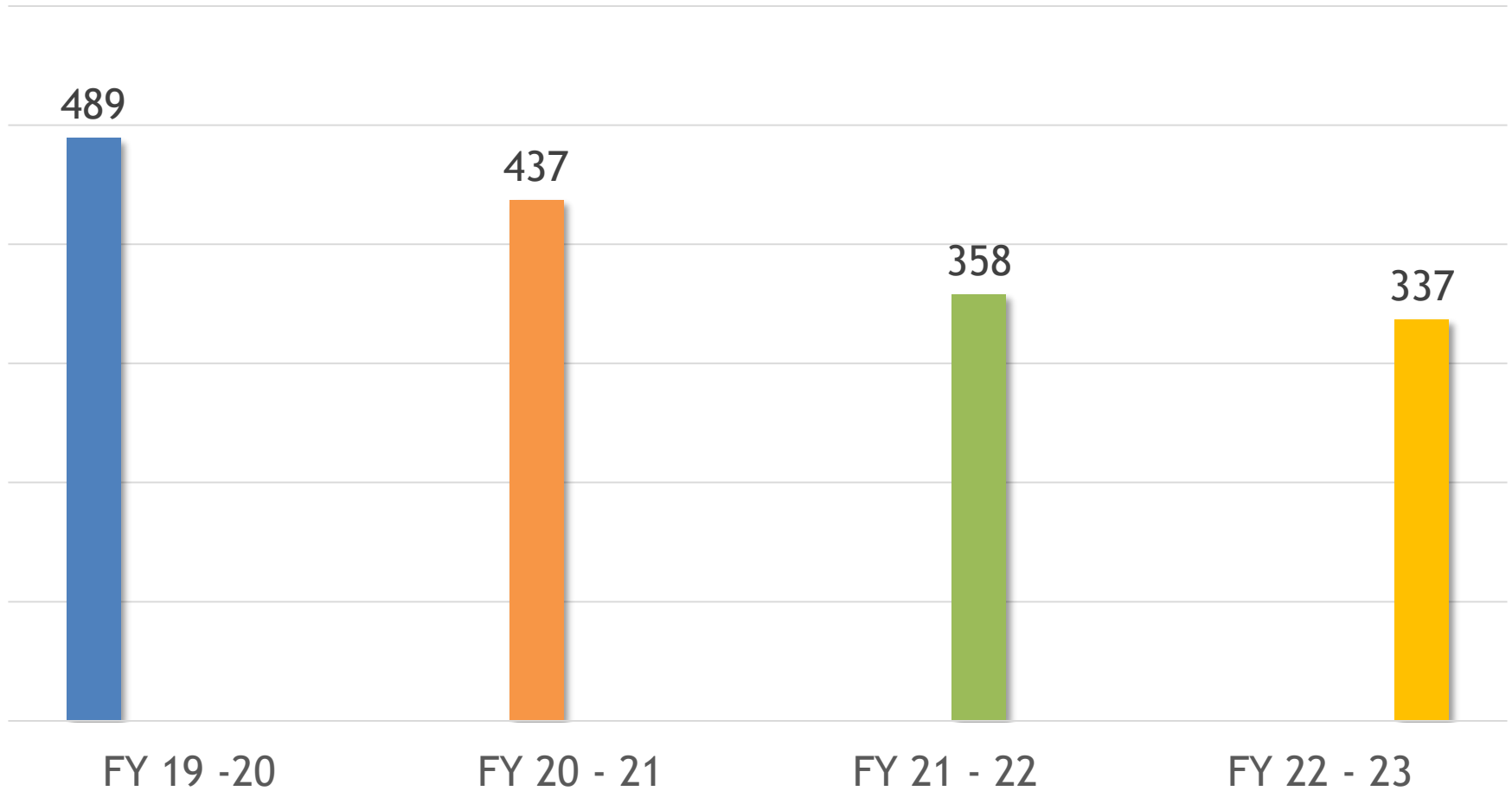
- Largest percentage (40%) lived in South County

PHF Clients by Region of Residence



Inpatient Hospitalizations

PHF Admissions Per Year



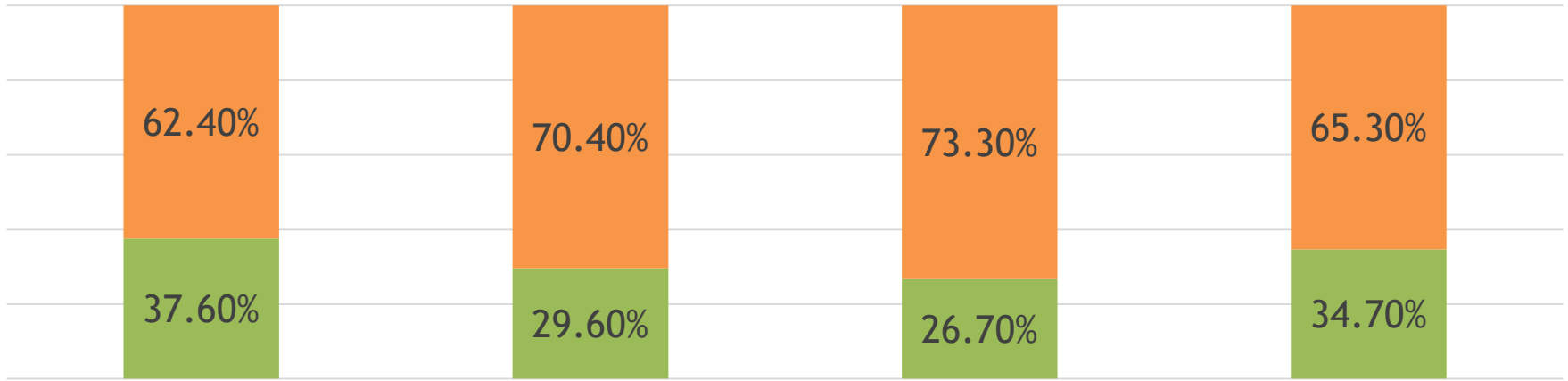
Average Length of Stay Data

Year	Incompetent to Stand Trial Days	General Days	Conserved Days
FY 19 - 20	19.5	8.5	26.6
FY 20 - 21	24.7	8.6	38
FY 21 - 22	38.9	8.7	50.9
FY 22 - 23	N/A	9.6	46.3



PHF Bed Day Mix: Acute vs. Administrative

■ Acute ■ Admin



	FY 19 - 20	FY 20 - 21	FY 21 - 22	FY 22 - 23
Acute	2,081	1,567	1,265	1,621
Admin	3,460	3,729	3,466	3,056
Total Bed Days	5,541	5,296	4,731	4,677



Challenges that Contribute to Long Lengths of Stay

PHF is currently the only locked inpatient psychiatric hospital in the county.

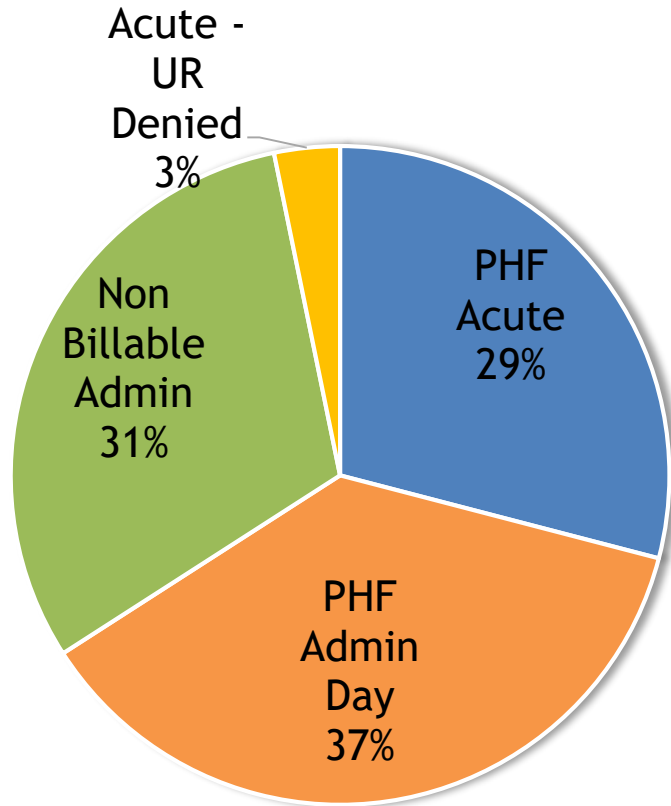
A number of individuals are admitted whom require lengthy stays to achieve recovery and find appropriate step-down facilities.

Limited beds statewide at higher levels of care with long waitlists for admissions.

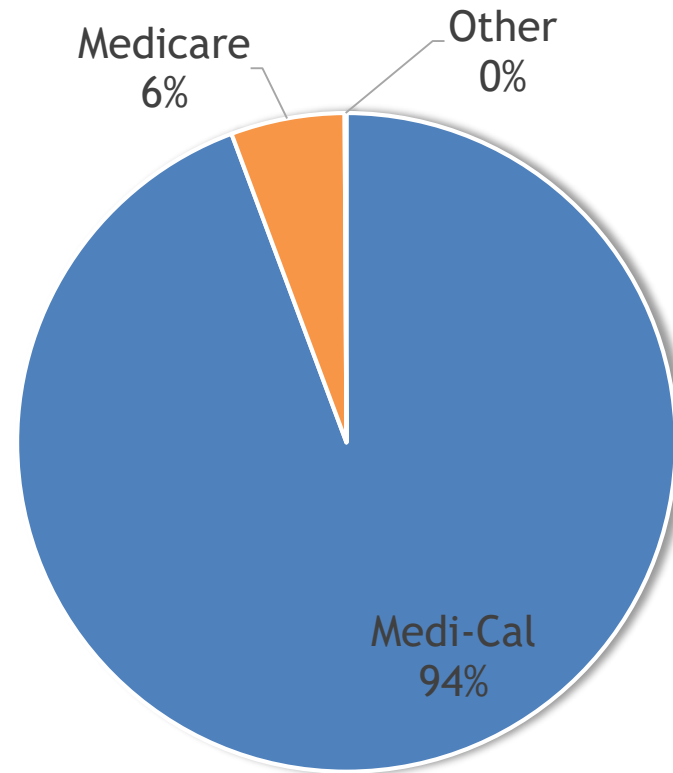


PHF Revenue and Funding

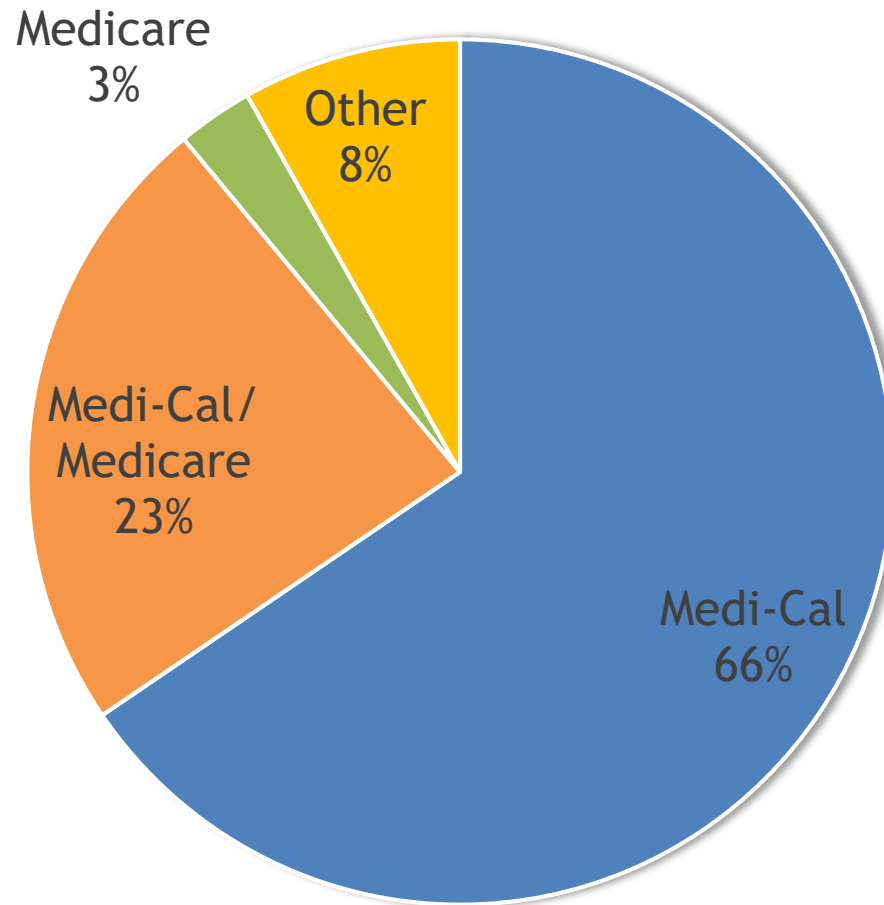
Billed Services Breakdown



PHF Revenue Mix



PHF Client Funding Sources



2021 DHCS Biennial licensing survey

- One finding requiring updates to staff Tuberculosis testing P&P
- Plan of correction submitted and accepted

January 2022 DHCS Triennial fiscal survey

- Zero disallowances on acute days billed to DHCS
- Plan of correction submitted and accepted

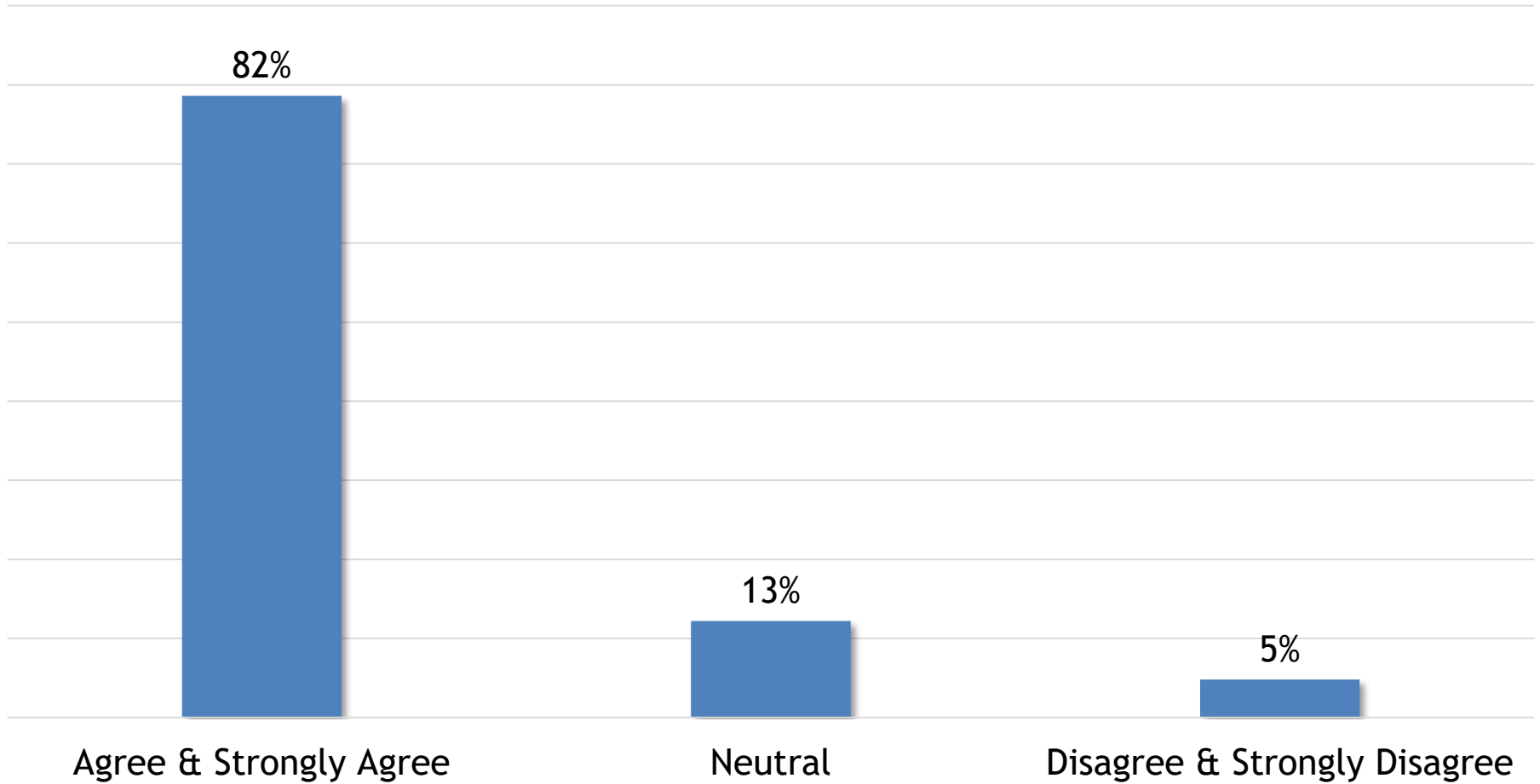
June 2023 DHCS Biennial licensing survey

- No findings related to environment of care/facilities
- 4 findings regarding medication storage, labeling and destruction
- Plan of correction submitted and accepted



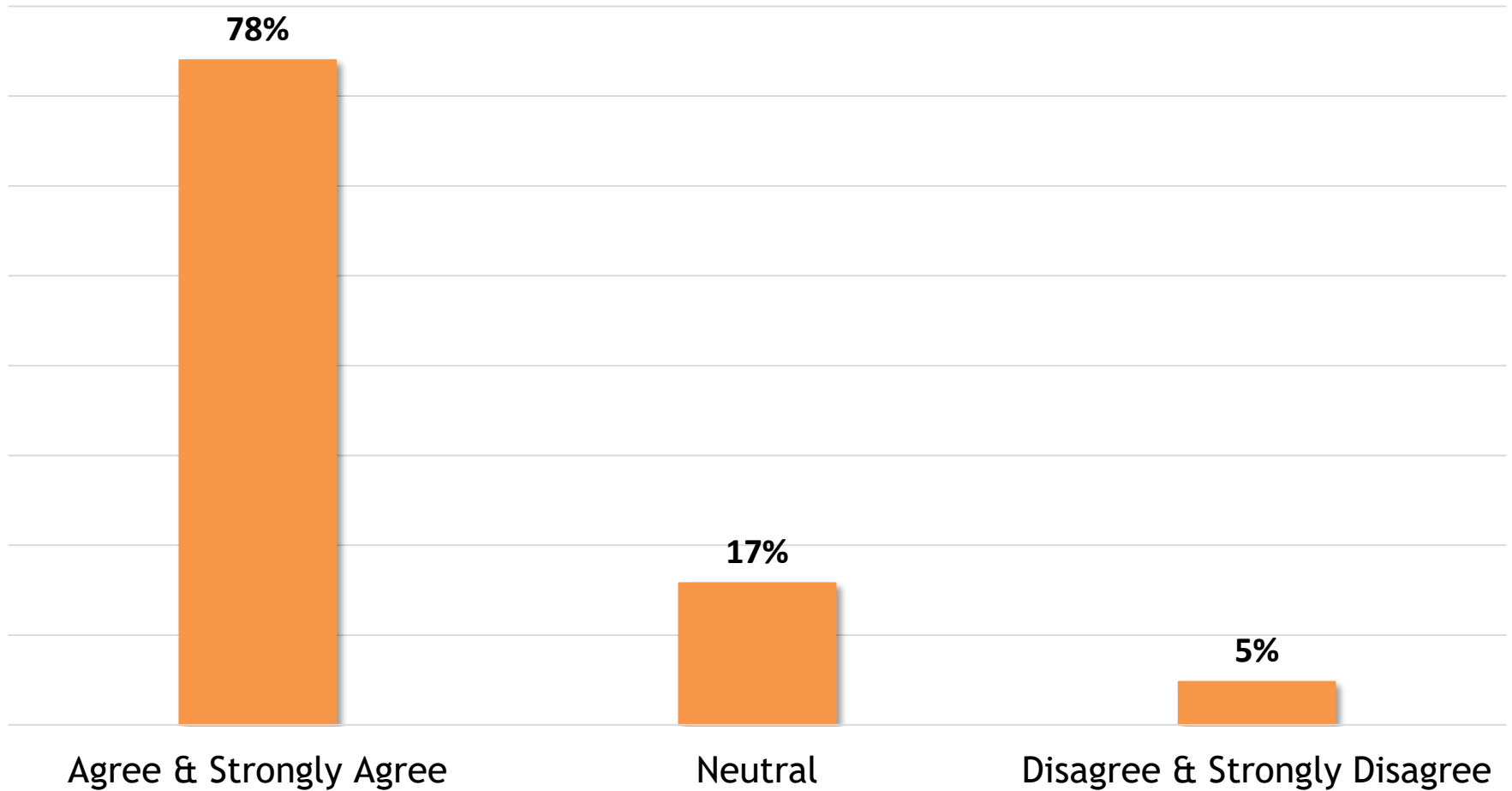
Patient Survey Results

"I liked the services I received here"



Patient Survey Results

"My symptoms are not bothering me as much as before"



New Initiatives

- ❑ Medical care evaluation on reducing 30 day readmission
- ❑ Implementing a hybrid electronic health record
- ❑ Increased integration of Pharmacist during daily treatment team
- ❑ Pharmacists now facilitate Medication Education groups
- ❑ Instituted regular meetings with Human Resources to improve nursing recruitment efforts
- ❑ Expanded partner agency participation in our 10:30 PHF Triage call
- ❑ Expanded our support capacity to include an evening Nursing Supervisor position



Report to Board of Supervisors

It is requested that the Board of Supervisors:

- Receive and file a report on the Psychiatric Health Facility (PHF), providing an annual update from the PHF Governing Board regarding operations of the PHF, including quality of care and other program activities; and
- Determine that the above actions are exempt from the California Environmental Quality Act (CEQA) pursuant to section 15378(b)(5) of the CEQA guidelines, as organizational or administrative activities of governments that will not result in direct or indirect physical changes in the environment.

