



Board of Supervisors The Novel Coronavirus (COVID-19)

Oct 6, 2020

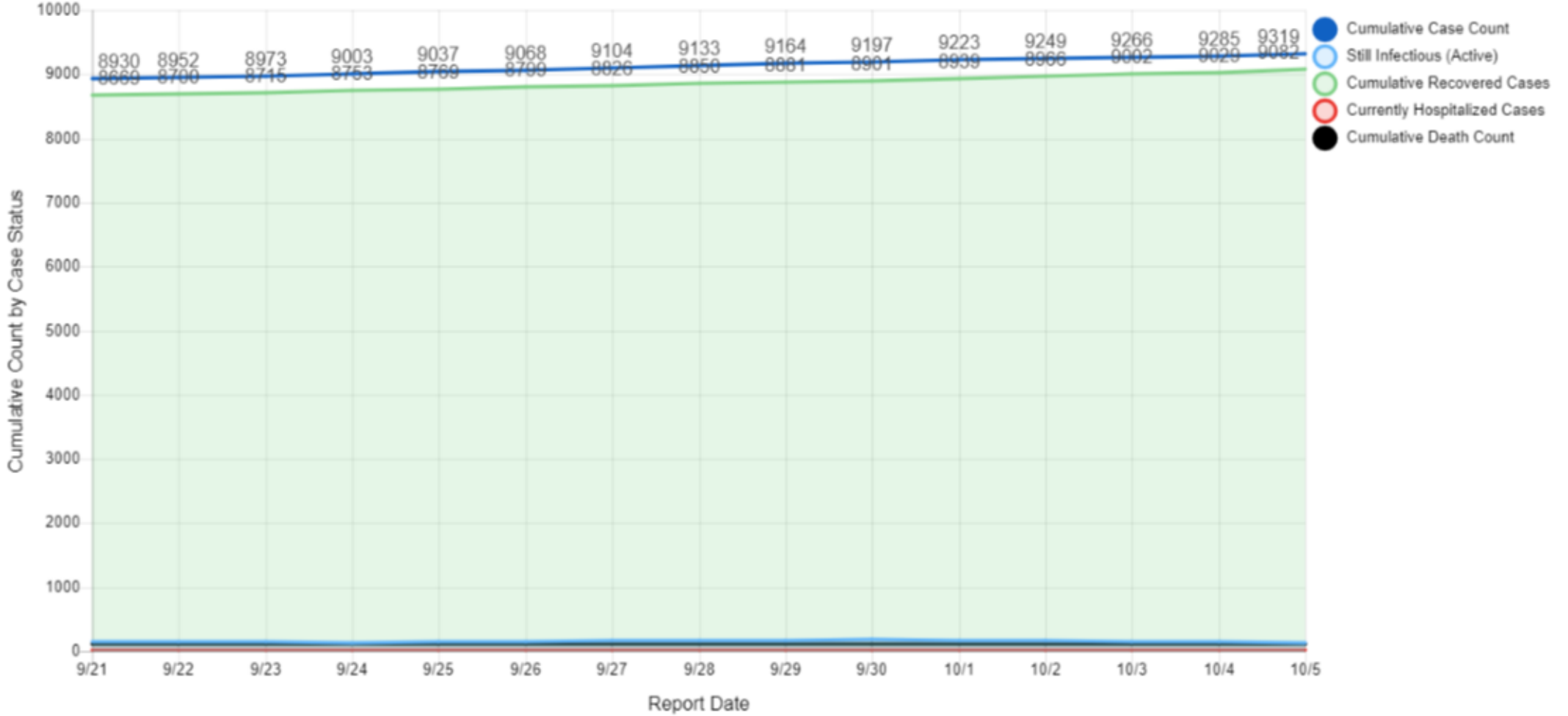
Briefing Topics

- SBC COVID-19 data
- Blueprint for a safer economy
 - Status
 - HOO 2020 -12.10
 - Health Equity Metric
 - Latinx & Indigenous Migrant COVID-19 Response Task Force
- School waivers



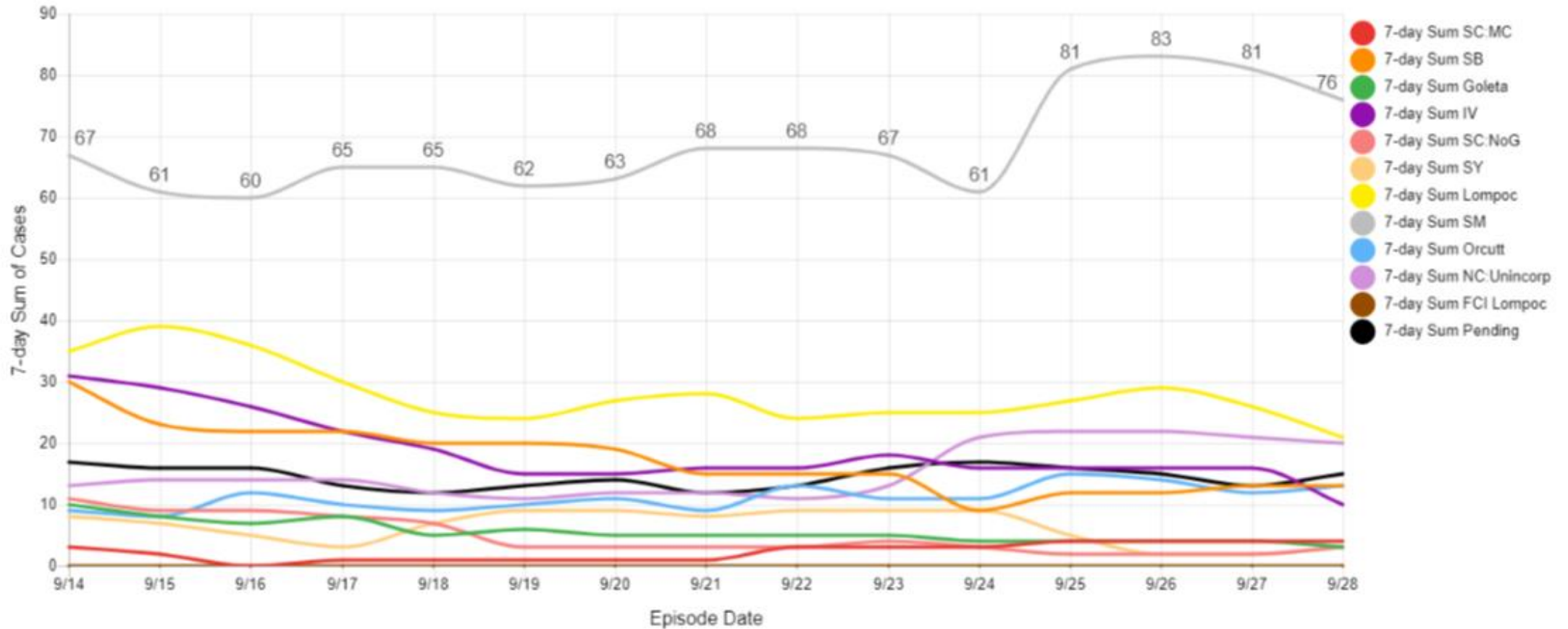
Santa Barbara County COVID-19 By The Numbers

CUMULATIVE CASE STATUS REPORTED AS OF TODAY



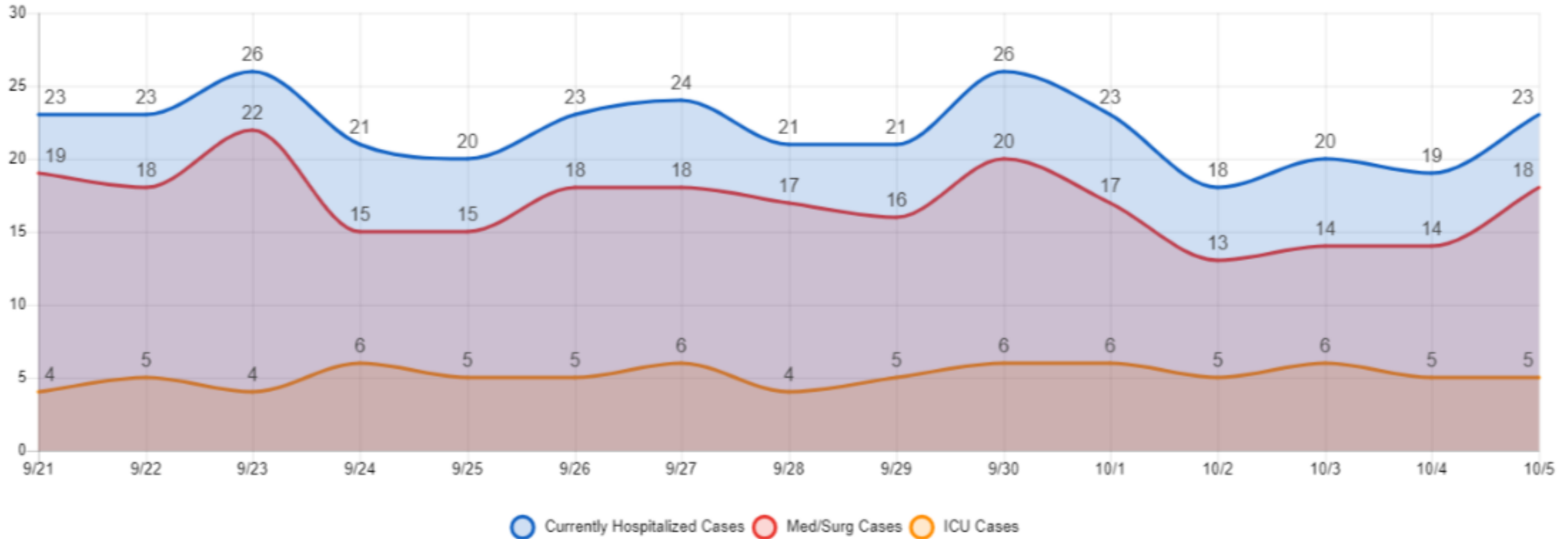
Santa Barbara County COVID-19 By The Numbers

7-DAY ROLLING SUM OF NEW CASES BY AREA



Santa Barbara County COVID-19 By The Numbers

COVID-19 HOSPITALIZATIONS



Santa Barbara County COVID-19 By The Numbers

Daily Hospitalized Cases*



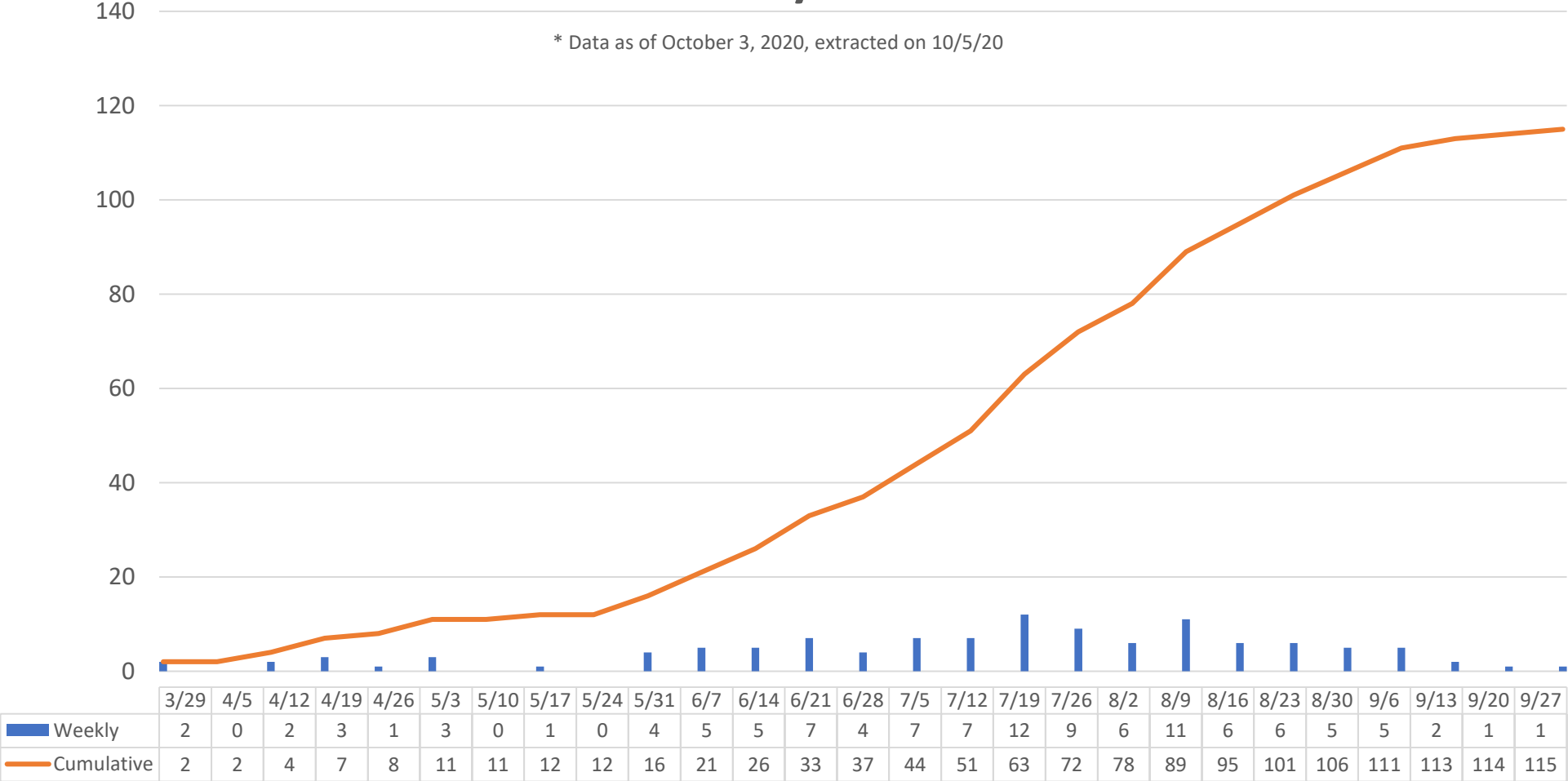
* As of October 3, 2020, extracted on 10/5/20



Santa Barbara County COVID-19 By The Numbers

COVID-19 Deaths by Week of Death*

* Data as of October 3, 2020, extracted on 10/5/20



Blueprint for a Safer Economy

DATA AS OF 10.06.20

Health Officer Order 2020 - 12.10

➤ Provides clarification for the following sectors:

- Outdoor Public Playgrounds
- Higher Education – Allowed to open indoors at 25% capacity or 100 people, whichever is less.
- Bars, Breweries, Brewpubs, and Distilleries: if serving meals to follow Restaurant sector limits
- Wineries and tasting rooms allowed indoors: if serving meals to follow Restaurant sector limits



Blueprint for a Safer Economy

➤ Blueprint Framework as of 10/06/2020:

- Adjusted Case Rate
- Test Positivity
- Health Equity Metric (applies to counties larger than 106K in population)
- Targeted Investment Plan (applies to all counties), due by 10/13/2020



California's Tier Framework

Blueprint Metrics as of Oct 6	Tier 1 (Widespread)	Tier 2 (Substantial)	Tier 3 (Moderate)	Tier 4 (Minimal)
Adjusted Case Rate per 100,000	>7	4 to 7	1 to 3.9	<1
Overall Test Positivity Rate	>8%	5% to 8%	2% to 4.9%	<2%
Lowest HPI Quartile's Test Positivity Rate <i>(excludes rurals)</i>	>8.00%	≤8.00%	<5.25%	<2.2%



Health Equity Metric

- Goal: to reduce and possibly eliminate disparities in the levels of COVID-19 transmission among county residents
- Improving all county COVID-19 data reporting
 - All counties to improve race/ethnicity data reporting for all COVID-19 cases
 - CDPH posting of county-level data race/ethnicity for all tests, cases, and deaths
- Improving testing positivity rates for the most disadvantaged communities
 - Health equity metric will not be used to move counties back to a more restrictive tier
 - The threshold for the next lowest tier must be met by lowest quartile for two consecutive weeks to move forward
- Closing disparities within all counties
 - Counties required to submit a plan for spending CDC funding on underserved communities



Moving to a less restrictive tier:

- Counties are assessed weekly basis (Tuesday)
- A county must have been in the current tier for a minimum of three weeks
- A county must meet criteria for the next less restrictive tier for the prior two consecutive weeks
- A county (larger than 106K in population) must meet the health equity metric for the same time period
- A county has submitted a Targeted Investment Plan by 10/13/2020



Moving to a more restrictive tier:

- A county's adjusted case rate and/or test positivity has fallen within a more restrictive tier for two consecutive weekly periods
- State and local health officials may work together on an ongoing basis to assess
- If moving to a more restrictive tier, counties have three days to implement any sector changes or closures unless extreme circumstances merit immediate action



ANTICIPATED CDPH Monitoring Status: 10/06

Santa Barbara County metrics

5.8

Adjusted case rate for tier assignment

New cases per day per 100K (unadjusted)

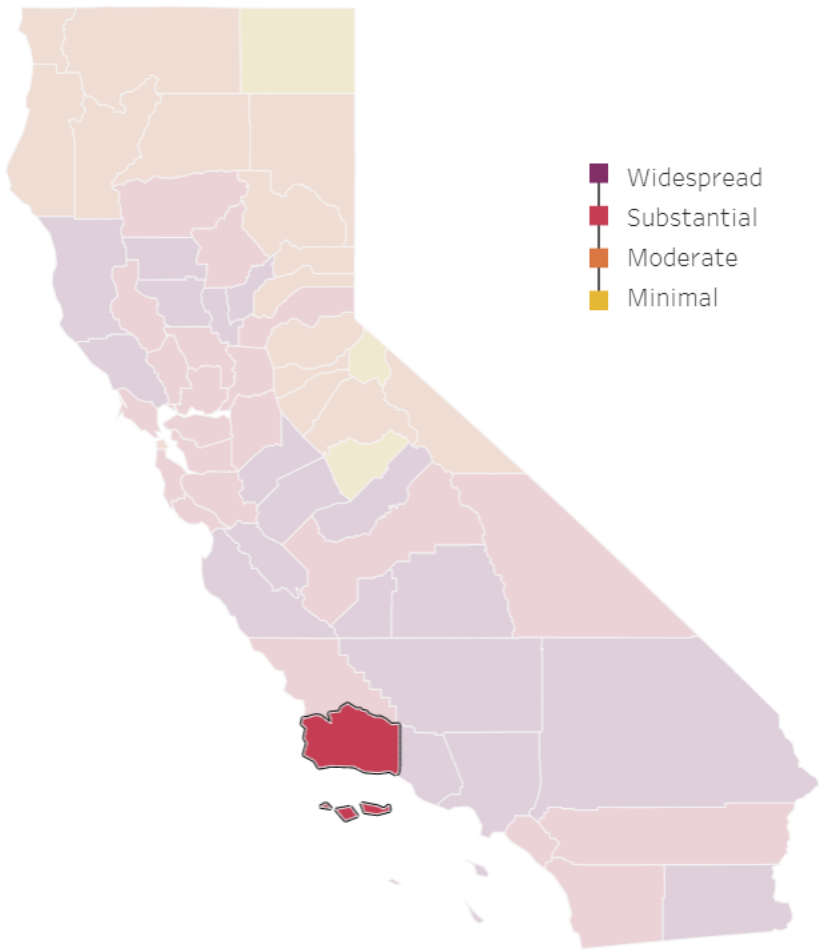
6.4

Positivity rate

3.3

Health Equity Metric:

6.7

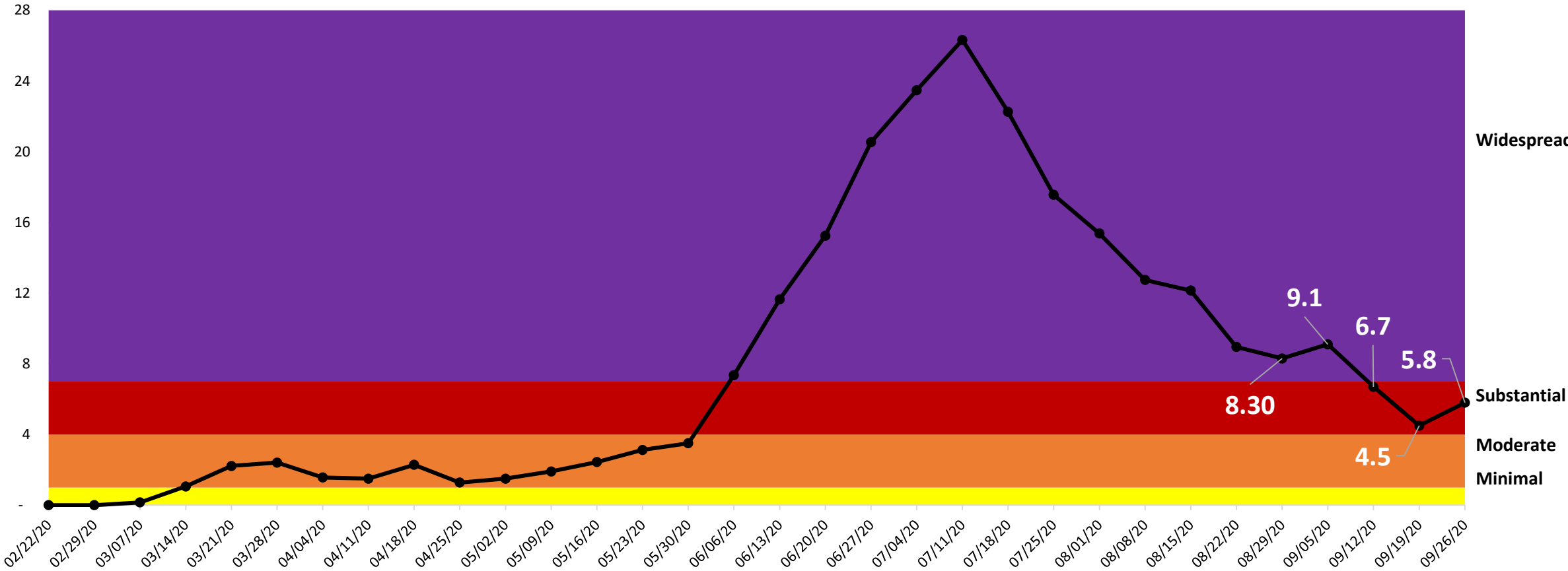


All data and tier assignments are based on results from week ending Sep 26, 2020



SBC Case Rate

Santa Barbara County, 7-Day Average, Unadjusted* Case Rate per 100,000 Community Residents



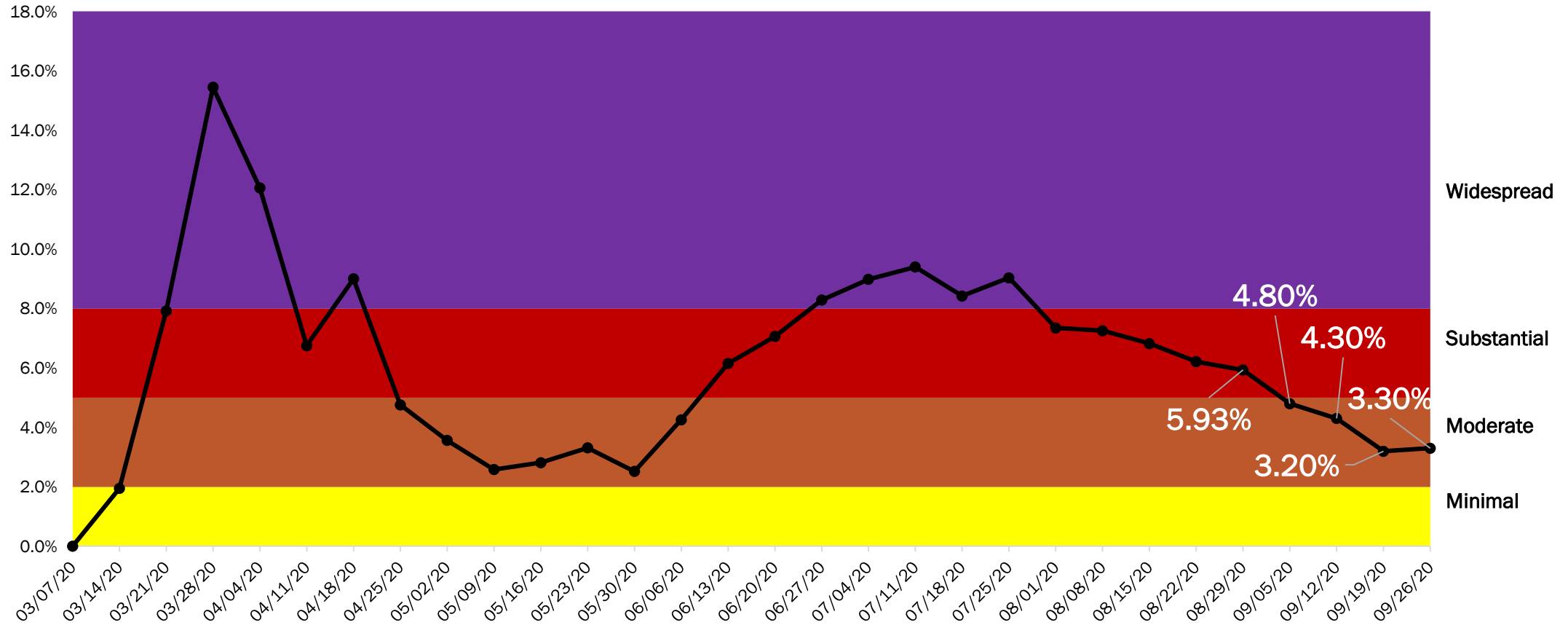
* Case rates as of 8/29 to current have been adjusted based on State metrics

update on 10/5/20

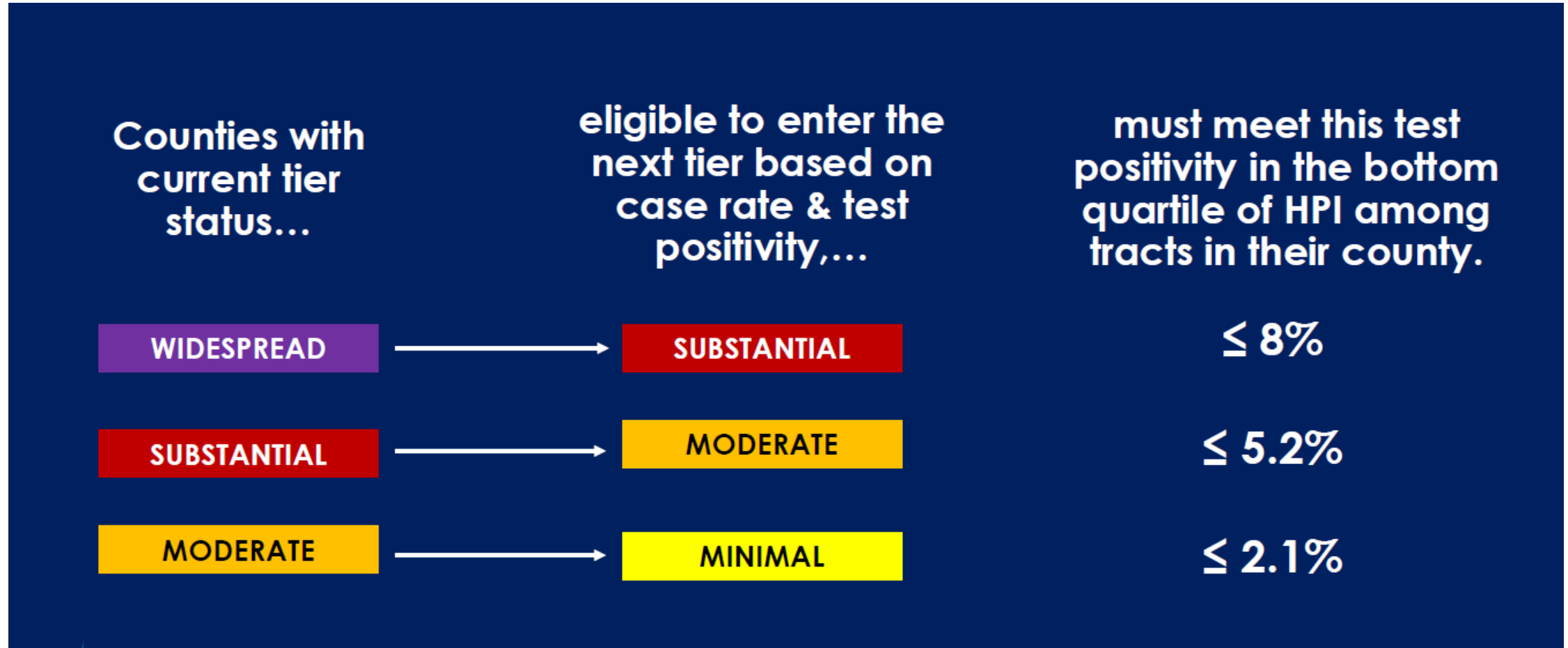


SBC Testing Positivity

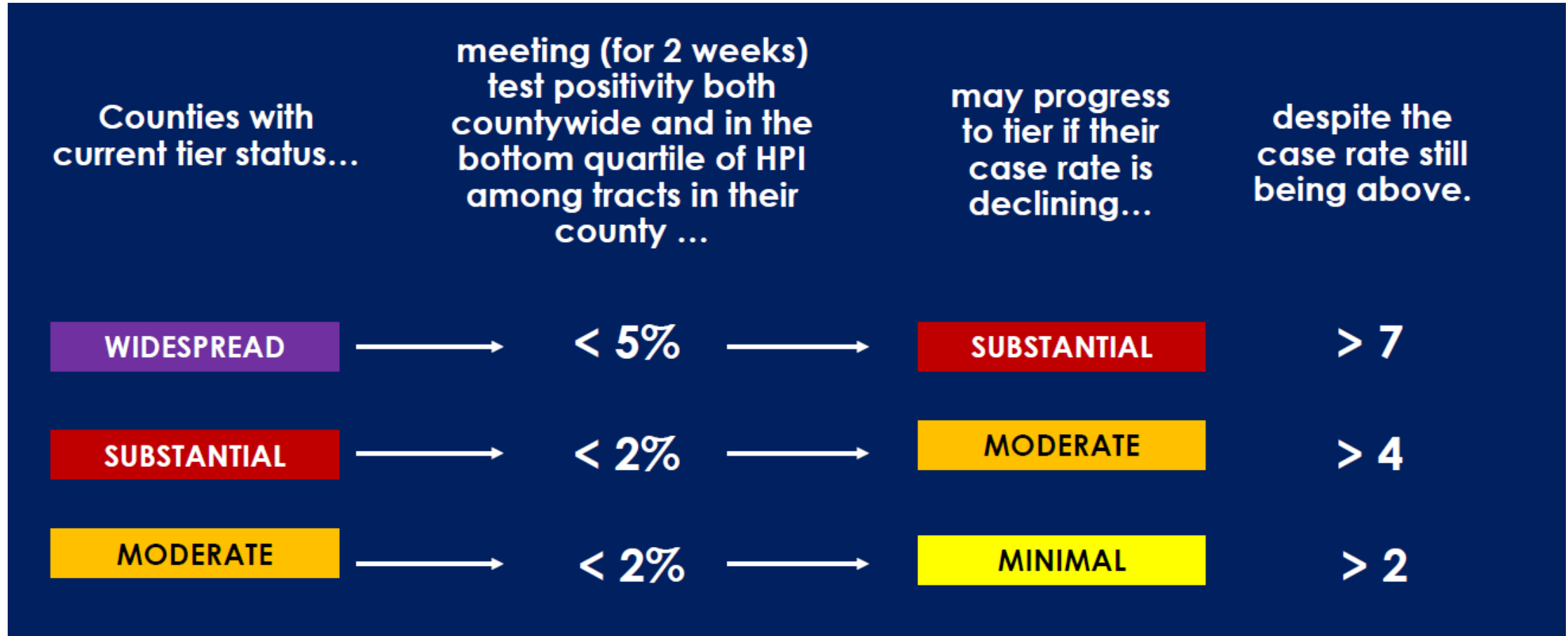
Santa Barbara County 7-day Average Community Test Positivity Percent



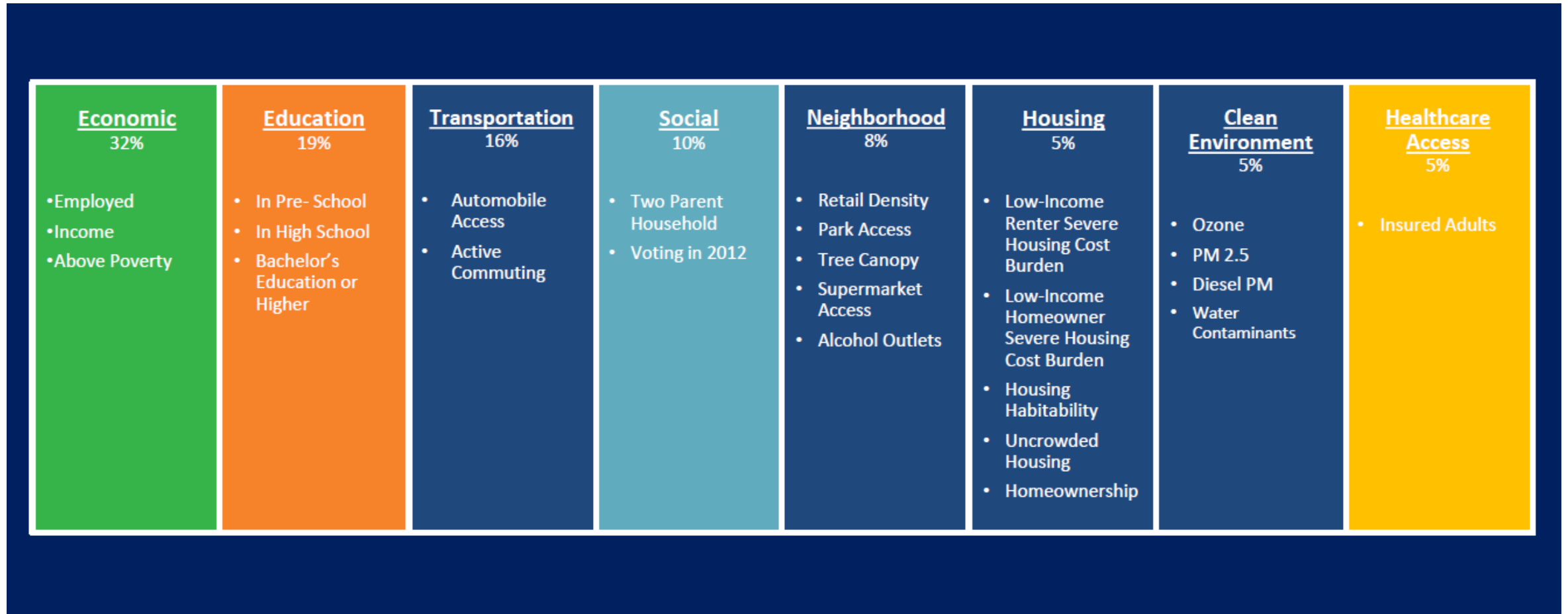
Health Equity Metric – Tier Progression



Health Equity Metric: Accelerated Progression



Healthy Places Index Indicators



Health Equity Metric Strategies

COVID-19 Health Equity Playbook for Communities

Overview: Working
Draft

Immediate COVID-19 Response Strategies

- Testing
- Contact Tracing
- Isolation Support
- Worker Protections

Medium and Longer-term COVID-19 Response Strategies

- Housing Security and Homelessness
- Economic Security
- Schools and Childcare
- Transportation / Physical Access and Mobility
- Health in All Policies (HiAP)/Governing for All

Cross cutting strategies

- Data
- Communication
- Language Access and Cultural Competency
- Community and Stakeholder Engagement



Addressing Health Equity in SBC

- Early data about hospitalizations
- Building on partnerships established pre-COVID
 - UCSB
 - MICOP
 - CAUSE
- PH Need: effective prevention of cases, hospitalizations, and deaths of Latinx community members
- Formation of Latinx and Indigenous Migrant COVID-19 Response Task Force





Latinx and Indigenous Migrant COVID-19 Response Task Force

Cross-sectoral county-wide collaboration to address the disproportionate impact of COVID 19 on these communities

Melissa Smith, M.D.

Director, Health Equity Initiatives, UC Santa Barbara

Chair of Expert Health Care Panel for the RISE Guide to reopening Santa Barbara County

Interim Coordinator, Latinx and Indigenous COVID-19 Response Task Force

LatinX and Indigenous migrants and their families are challenged by unfavorable social determinants of health

- Social determinants of health: Conditions in the environment in which people are born, live, learn, work, and play that affect a wide range of health, functioning, and quality-of-life outcomes and risks
- Unfavorable social determinants of health are compounded by inequities due to race/ethnicity, socioeconomic and migration status, gender, and sexual orientation
- Disproportionately higher rates of chronic diseases and risk of complications of COVID-19, as well as mental wellness concerns
- Many are essential workers; they are on the frontline and cannot shelter in place
- Nationally, Black and Asian Pacific Islander communities are also disproportionately impacted by the pandemic



County-wide cross-sectoral collaboration: The power and synergy of many partners' efforts amplified

- 93 cross-sectoral partners, including:
 - Community Based Organizations, Santa Barbara County Public Health Department and Department of Behavioral Wellness, UC Santa Barbara, health service providers, elected officials, funders, and community members
- Develop and share educational resources, provide direct services, collaborate on outreach efforts, develop innovative programs, and support policy change
- Trusted community partners have unique access to vulnerable communities



Rapid response to community needs and priorities

- Centering community voice and leadership
- Bimonthly Task Force dialogue including Task Force partners and the Public Health Department
 - Simultaneous language interpretation in Spanish for all meetings
- Bimonthly Working Group meetings and strategy sessions to respond to urgent priorities
 - Farmworker Working Group
 - Community Outreach
 - Access to Resources
 - Civic Engagement and Advocacy
 - Mental Health and Wellness Working Group
 - Emergency/Safety Planning
 - Youth/Teen Support & Resources
 - Outreach/Engagement/Education/Messaging
 - Lompoc Prison Task Force



Task Force Partners' Collaboration and Accomplishments

- Public health education and multimedia outreach in Spanish and multiple Indigenous languages
 - 8 PSAs
 - 21 Videos
 - Partners: PHD, Mixteco Community Organizing Project (MICOP), Herencia Indígena, CAUSE, and other Task Force partners
- Outreach to communities and farms with vital resources
 - 21 small farms reached
 - 20,095 total face coverings
 - 1,300 COVID-19 prevention kits
 - Partners: Community Health Centers of the Central Coast, Promotoras Network of the Santa Barbara County Education Office, Dignity Health, the Food Bank, Lideres Campesinas, MICOP, Family Services Agency, Catholic Charities, SB Neighborhood Clinics, SB Bucket Brigade and other community sewing groups, and other Task Force partners



Task Force Partners' Collaboration and Accomplishments

- Collaborative development and promotion of PHD policy and COVID-19 program initiatives
 - Free Access COVID-related care through the Public Health Department
 - Free COVID-19 testing throughout Santa Barbara county
 - Health Officer Orders
 - Mental health support groups and programs
 - Housing for the Harvest Program
- Strong collaboration with a student and faculty team based in the UCSB Center for Publicly Engaged Research
- Task Force model replicated in Ventura County, emerging in SLO County
- Protection of the health and wellbeing of inmates at Lompoc Prison



Task Force Future Plans

- Cement our foundation for future collaboration and rapid response efforts
- Our cross-sectoral collaboration is an essential and sustainable strategy for achieving health equity in our county
- Work with Black, Pan-Asian, LGBTQ and other communities, further building a county-wide health equity collaborative effort
- Create a model for promoting health equity aligned with the health equity metric provided by the California Department of Public Health
- Town hall dialogues with sector leaders (agriculture, health care, service industry, and others)



Thank You!



Partner Organizations

Blue Sky Center

Bonfire Media Collective

Dignity Health, CA Central Coast Division-North

Cachuma Resource Conservation District

Carpinteria Children's Project

Catholic Charities

CAUSE

Cen Cal Health

Center for Employment Training

City of Santa Maria

Community Environmental Council

Community Health Centers of The Central Coast

County of Santa Barbara

County of Ventura

Domestic Violence Solutions

DRIVERS LISTOS

Eastern Kentucky University

El Centro

Eyeshine

Family Resource Center

Family Service Agency/Santa Maria Valley Youth & Family Center

First 5 Santa Barbara County

Future Leaders of America

Foodbank of Santa Barbara County

Food & Water Watch

Fund for Santa Barbara

Herencia Indígena

HOPE/ ESPERANZA

Hospice of Santa Barbara

Mi Vida, MI Voz

Immigrant Hope

IMPORTA

Independent Living Resource Center,

Isla Vista Youth Projects

Just Communities

La Casa de la Raza

La Hermandad

Legal Aid Foundation of Santa Barbara County

Latinx and Indigenous Migrant COVID-19 Response Task Force

Leading From Within

Lideres Campesinas

LISTOS

Little House by the Park

Love your inmate

McCune Foundation



Partner Organizations

Mexican Indigenous Language Promotion and Advocacy

Mixteco/Indígena Community Organizing Project

National Association for the Advancement of Colored People

New Covenant Church

Non Profit Research Network

Office of Assembly member Monique Limon

Office of Congressman Salud Carbajal

Office of Supervisor Das Williams

Office of Supervisor Gregg Hart

Office of Supervisor Joan Hartmann

Office of Supervisor Peter Adam

Office of Supervisor Steve Lavagnino

Pan Asian Network

Physician, Independent researcher

Planned Parenthood Action Fund

Planned Parenthood California Central Coast

Population Health, Cottage Health

Public Square Equity Intern Program

Sansum Diabetes

Sansum Diabetes Research Institute

Santa Barbara Bucket Brigade

Santa Barbara City Fire Dept. OES

Santa Barbara County Promotores Network

Santa Barbara Neighborhood Clinics

Santa Barbara Public Health Department

Santa Maria Health Center

Santa Maria Joint Union High School District

SB ACT

SB Foundation

Santa Barbara Immigrant Defense

Santa Barbara County Department of Behavioral Wellness

Santa Barbara County Education Office

Santa Barbara Cottage Health

Santa Barbara Response Network

Showing Up for Racial Justice Santa Barbara

The Towbes Foundation

Transition Mental Health Association

U.S. Department of Commerce U.S. Census Bureau

UCSB Admin

UCSB Department of Anthropology

UCSB Center For Publicly Engaged Scholarship Internship

UCSB Chicano/a Studies

UCSB Counseling and Psychological Services

UCSB Dept of Linguistics

UCSB Health Equity Initiatives Hub

Valley of the Flowers United Church of Christ

Voluntary Organizations Active in Disaster

Working for Black Lives



School Waivers

DATA AS OF 10.06.20

Approved School Waivers

1. Howard School
2. Knox School
3. Laguna Blanca
4. Waldorf School
5. Coastline Christian Academy
6. SYV Family School
7. Santa Ynez Valley Christian Academy
8. Pacific Christian School
9. Montessori
10. Valley Christian Academy
11. Crane School
12. St. Raphael School
13. St. Mary of the Assumption
14. Marymount
15. Cold Spring School District
16. Montecito Union School District
17. Providence
18. Dunn School
19. Our Lady of Mt. Carmel School
20. Notre Dame School



Approved School Waivers

21. St. Louis de Montfort
22. Manzanita Public Charter School
23. Blochman Union School District
24. La Purisima Concepcion
25. Santa Ynez Valley Charter School
26. Los Olivos Elementary School



School Waivers @ CDPH

1. Carpinteria Unified Elementary School
2. Ballard Elementary School
3. Santa Barbara Middle School



School Waivers Pending Additional Information

1. Children's Montessori School of Lompoc



**STRONGER
TOGETHER.
SAFELY APART.**