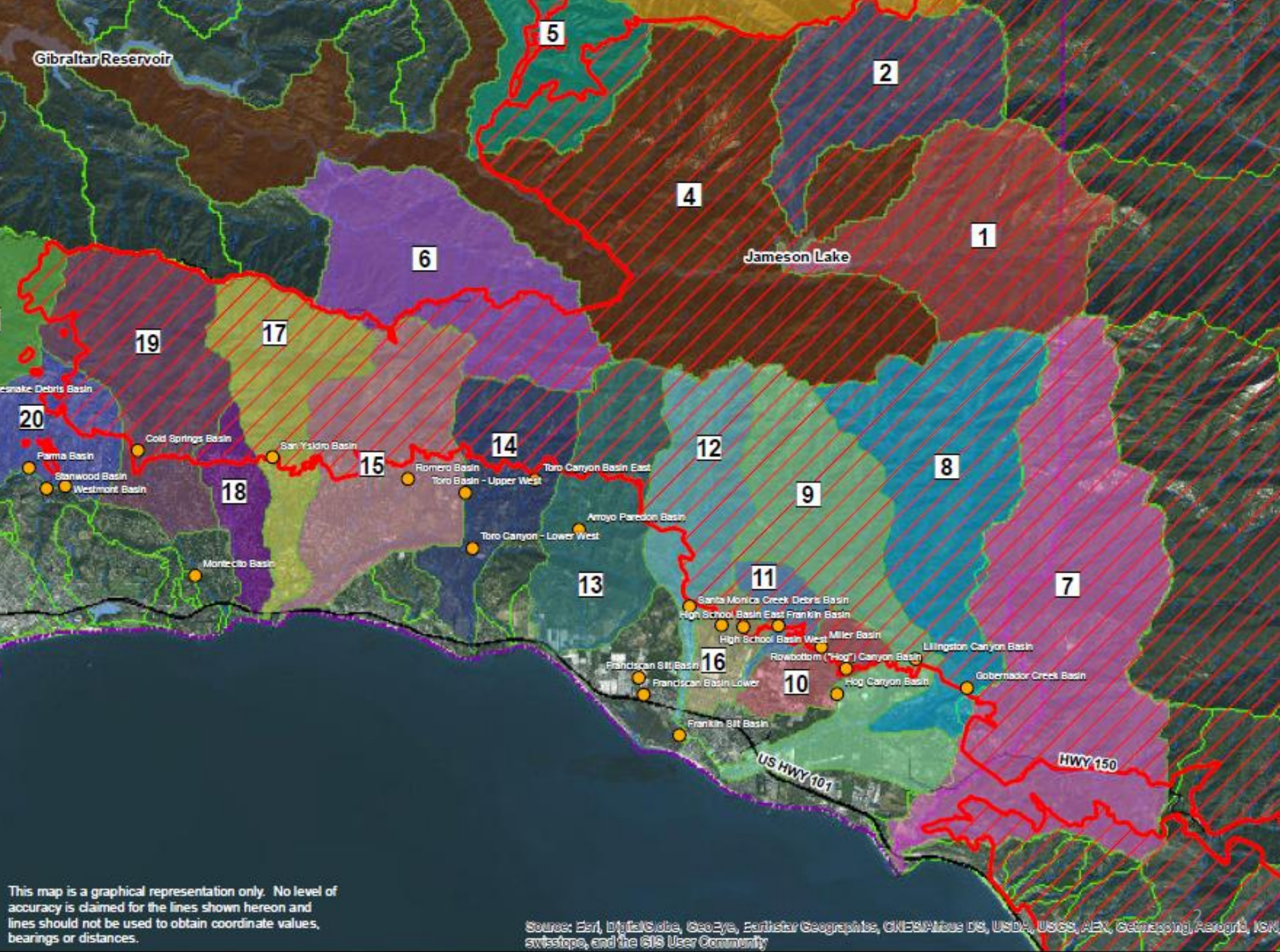




Thomas Fire Recovery Storm Preparations

**Santa Barbara County Public Works
Flood Control District**



Gibraltar Reservoir

Jameson Lake

Santa Monica Creek Debris Basin

Parma Basin

Cold Springs Basin

San Ysidro Basin

Romero Basin

Toro Basin - Upper West

Toro Canyon Basin East

Arroyo Paredon Basin

Toro Canyon - Lower West

High School Basin East

High School Basin West

Miller Basin

Rowbottom (Hog) Canyon Basin

Lillingston Canyon Basin

Governador Creek Basin

Hog Canyon Basin

Franciscan Silt Basin

Franciscan Basin Lower

Franklin Silt Basin

US HWY 101

HWY 150

This map is a graphical representation only. No level of accuracy is claimed for the lines shown hereon and lines should not be used to obtain coordinate values, bearings or distances.

Source: Esri, DigitalGlobe, GeoEye, Earthstar Geographics, CNES/Airbus DS, USDA, USGS, AeroX, Getmapping, Aerogrid, IGN, swisstopo, and the GIS User Community

Gobernador Basin



Arroyo Paredon Basin



All Work Completed by County Forces

Toro Main Basin



San Ysidro Basin



Questions



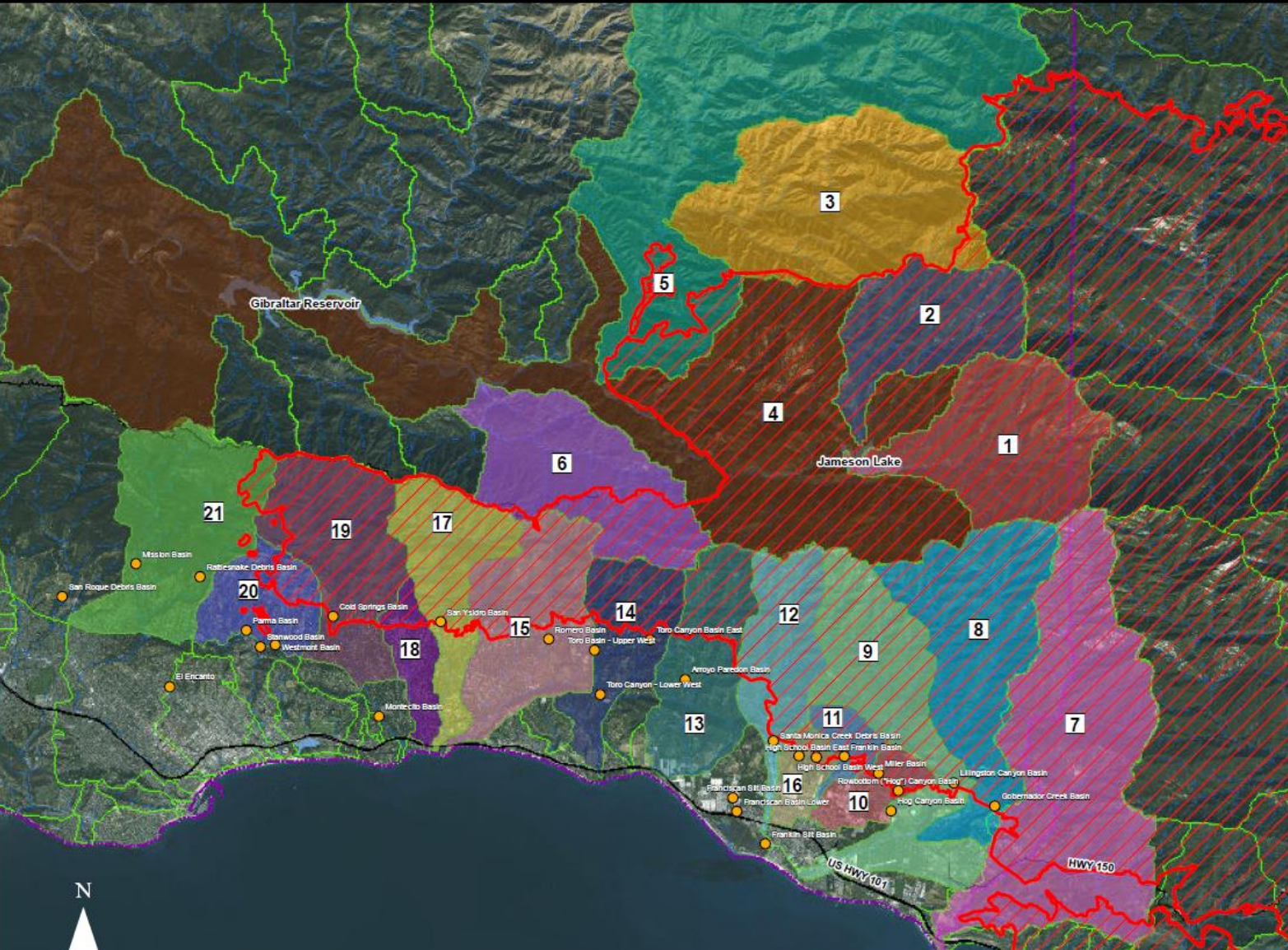
Department of Public Works
Water Resources Division
County of Santa Barbara

Legend

Fire Perimeter 12/18/2017 9:00 P.M.

	Acreage Burned	% of Watershed
	1 4,500	100%
	2 3,321	100%
	3 296	4%
	4 9,446	23%
	5 1,112	8%
	6 1,356	31%
	7 7,558	83%
	8 4,681	92%
	9 3,091	67%
	10 355	37%
	11 521	80%
	12 2,004	82%
	13 1,066	35%
	14 1,086	47%
	15 1,928	51%
	16 177	24%
	17 2,011	77%
	18 235	25%
	19 2,842	77%
	20 375	39%
	21 214	5%

- Watershed
- Basins
- Creeks
- Reservoirs
- County Boundary



This map is a graphical representation only. No level of accuracy is claimed for the lines shown hereon and lines should not be used to obtain coordinate values, bearings or distances.

Source: Esri, DigitalGlobe, GeoEye, Earthstar Geographics, CNES/Airbus DS, USDA, USGS, AeroV, GEBCO, AeroGRID, IGN, ISF, swisstopo, and the GIS User Community

Thomas Fire
Santa Barbara County, California
Prepared by the Water Resources Division 12/19/2017