



#7

Lenzi, Chelsea

From: Phillip Fanchon <pfanchon@calpoly.edu>
Sent: Friday, June 29, 2018 7:16 PM
To: Williams, Das; Wolf, Janet; Hartmann, Joan; Adam, Peter; Lavagnino, Steve; sbcob; Phillip Fanchon
Subject: Re. July 3rd 2018 meeting –EGVCP (ESH/RC Overlay Map Update)
Attachments: Windermere area -ESH map.docx

Dear County Supervisors,

I could not add this document to my comments today because 154 was closed due to the fire. I hope that you have a minute to look at this addendum to the file I sent you two days ago about the EGVCP ESH/RC map update. Thank you for your consideration. Cordially,

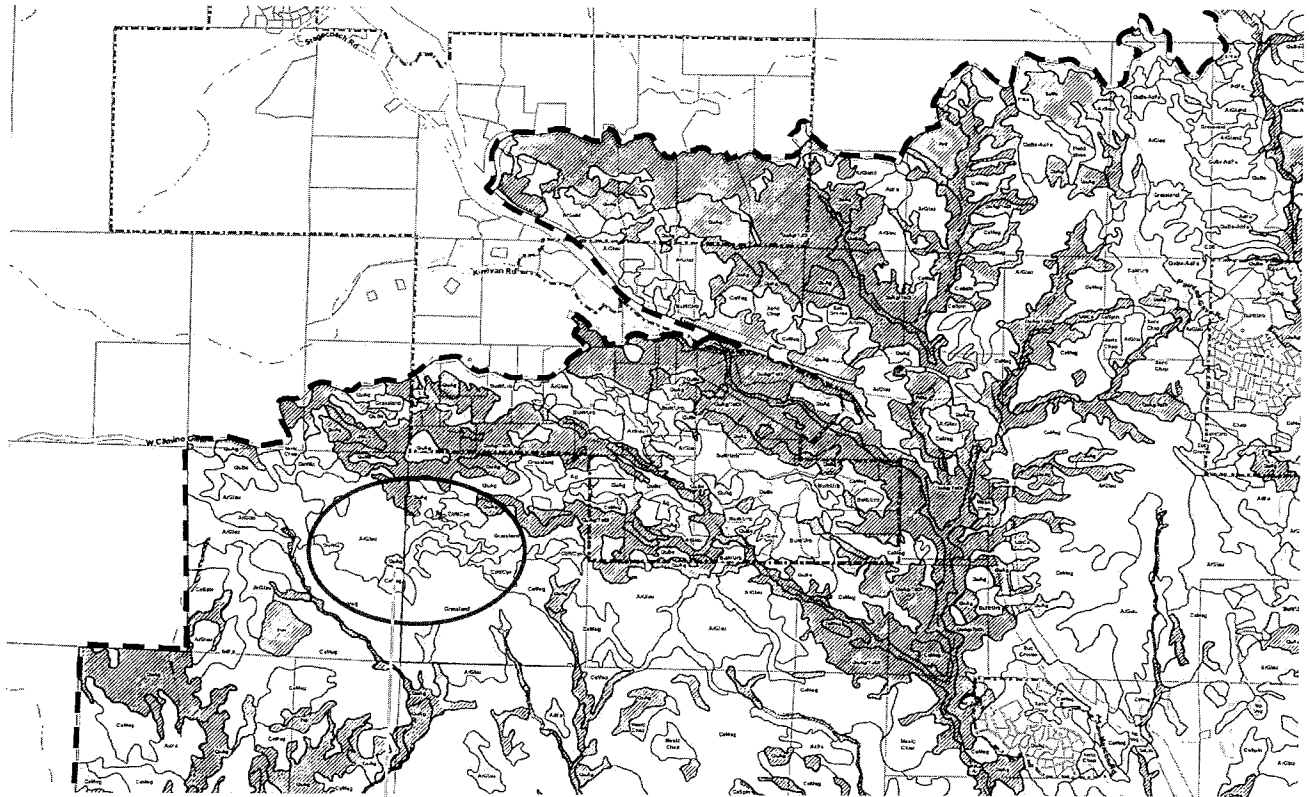
Phillip Fanchon.

Re. July 3rd 2018 meeting –EGVCP (ESH/RC Overlay Map Update)

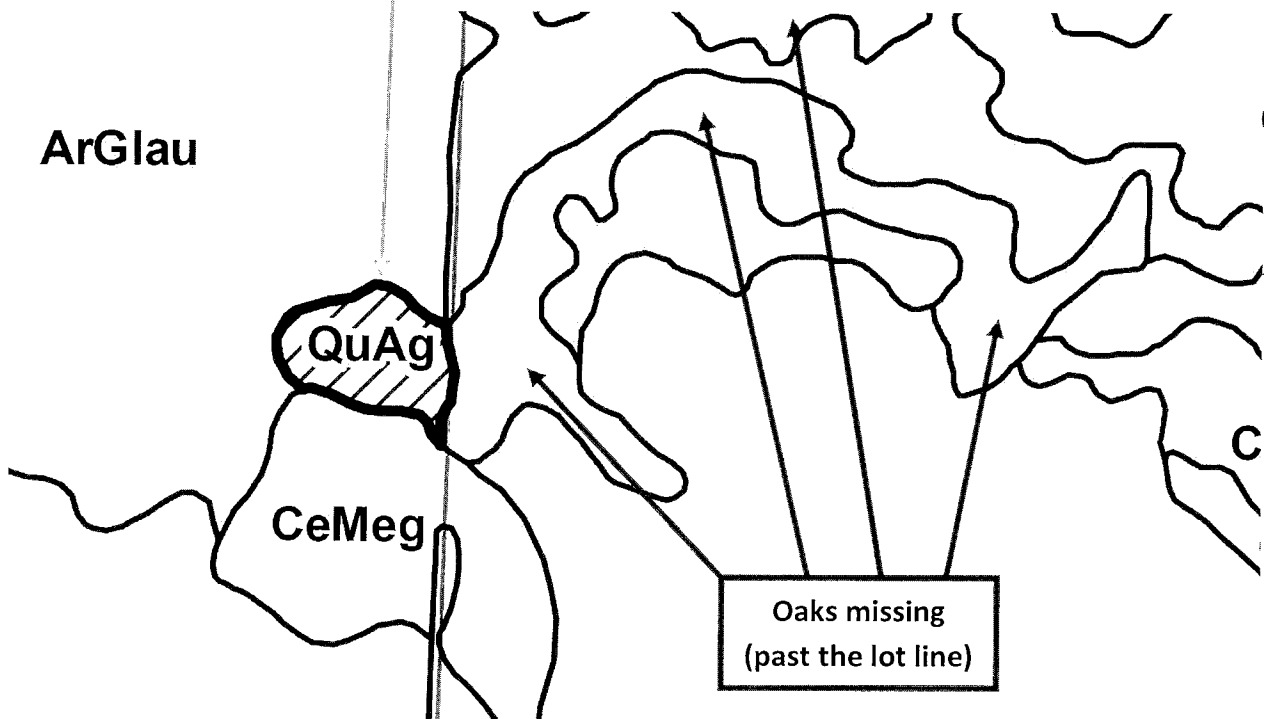
Submitted by Phillip Fanchon

This is another example of bias or inconsistency of the ESH map; The area shown is the Western edge of the Windermere parcel on Camino Cielo. The Google Earth picture shows the presence of oaks on the Western part of the parcel, and the vegetation map reflects their presence. The ESH map shows the boundary lines from the vegetation map, but only the part beyond the lot line is "environmentally sensitive" and all the oaks on the Windermere lot are deemed not sensitive!

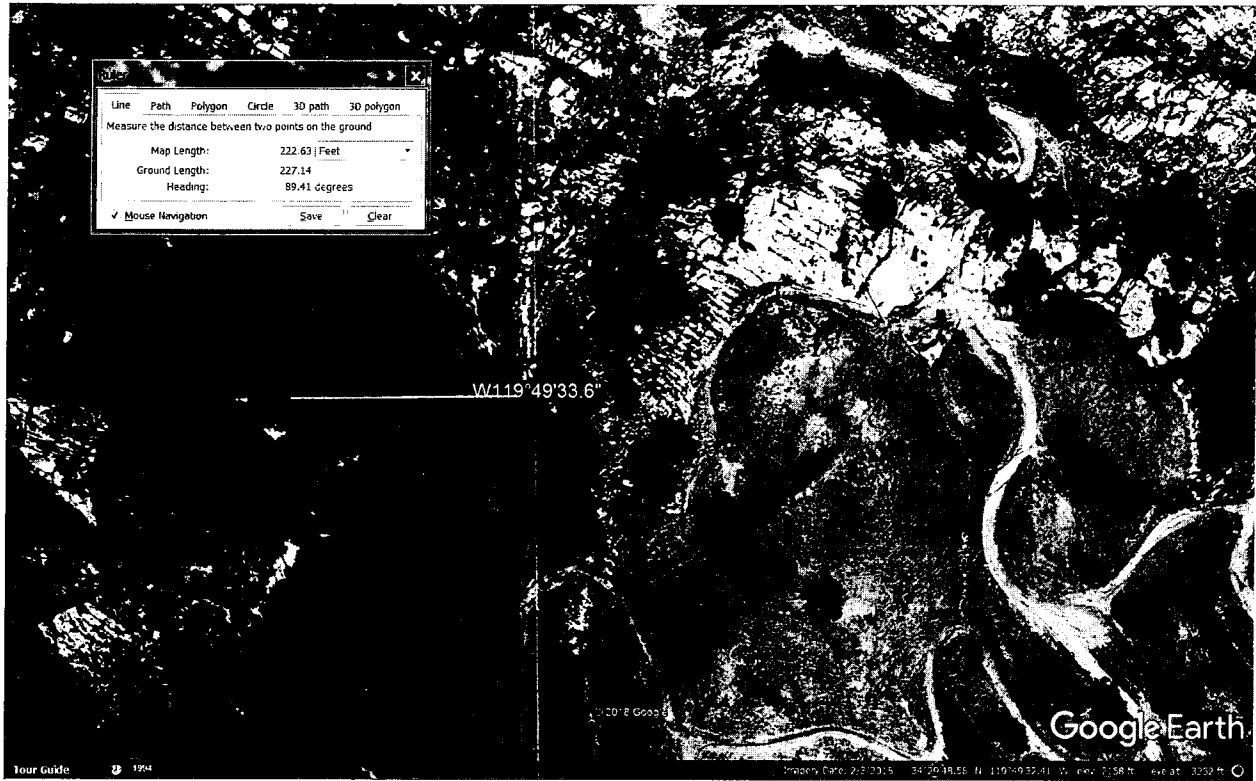
ESH map



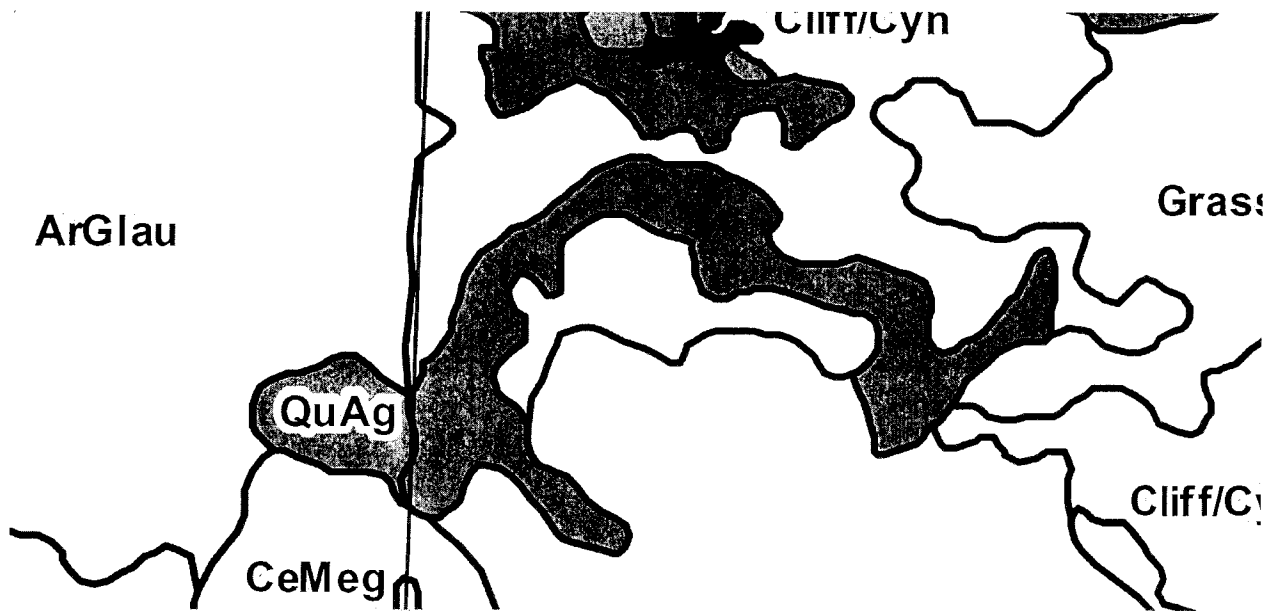
ArGlau



Google picture 2018



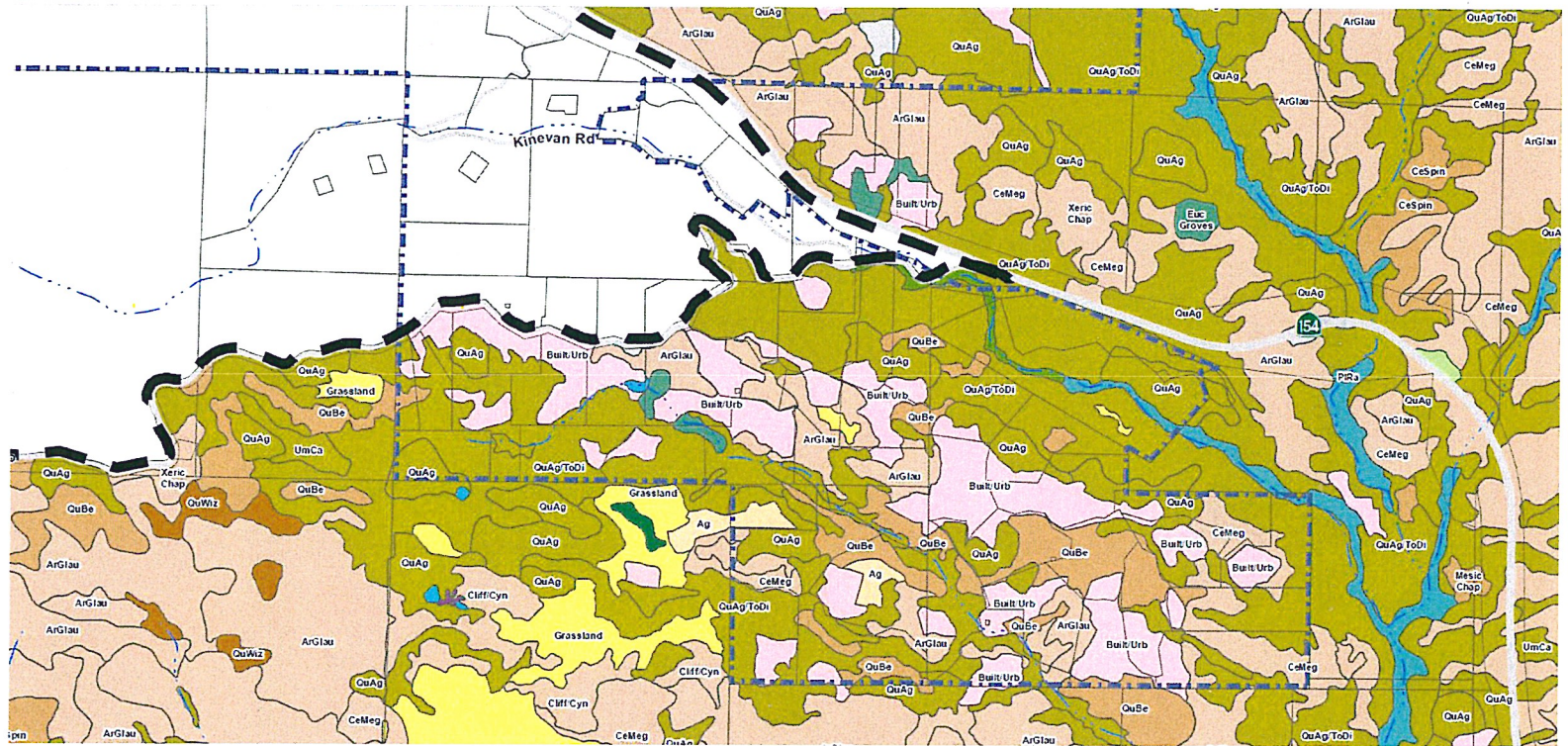
Vegetation map



ESH/RC Map inconsistencies (NW corner only)

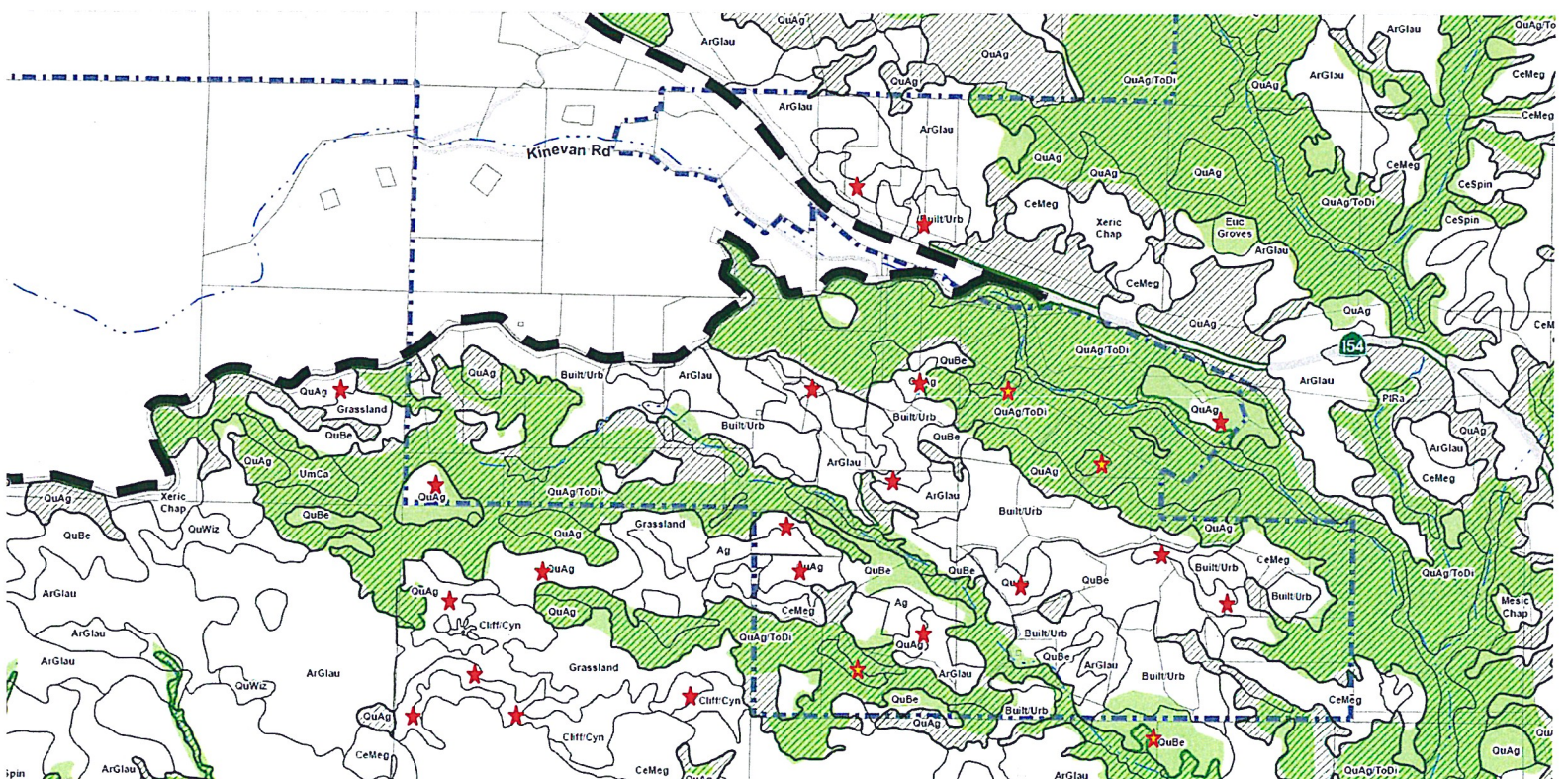
Vegetation map

□ Oak woodland □ Chaparral (Pre-Montane) □ Chaparral (Mesic)






Proposed ESH/RC map

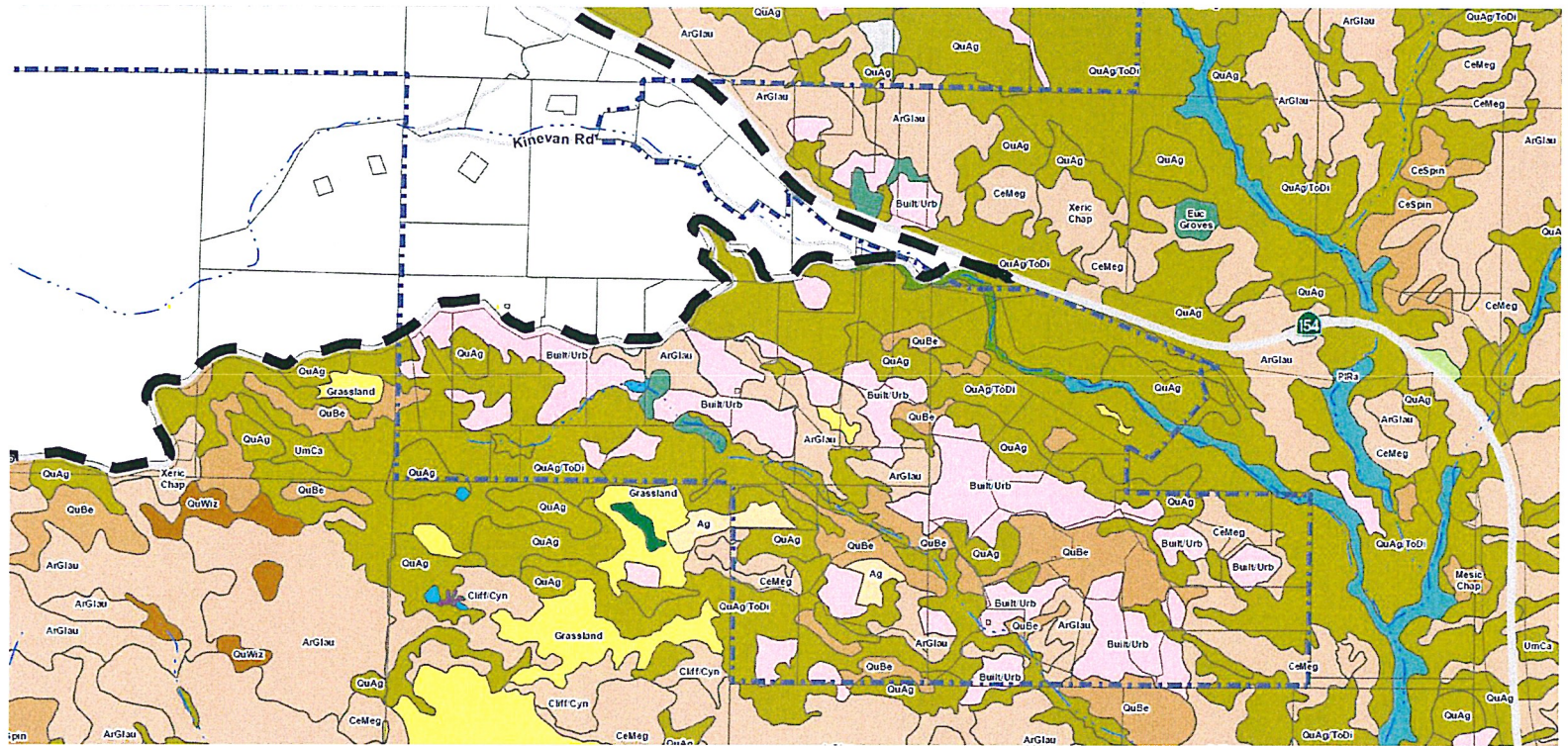
★ Oaks deleted ★ Oaks "created"



ESH/RC Map inconsistencies (NW corner only)

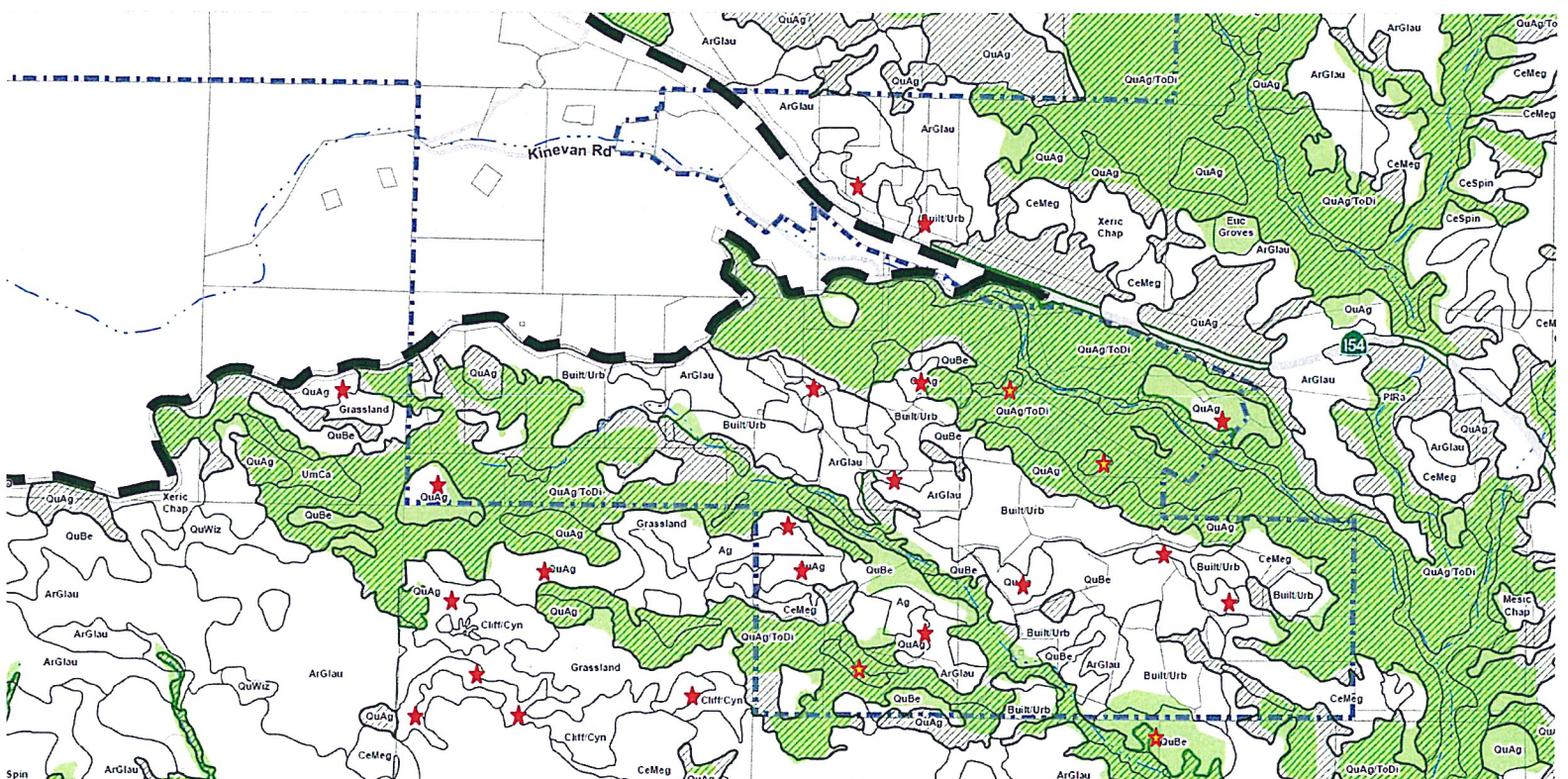
Vegetation map

-  Oak woodland
-  Chaparral (Pre-Montane)
-  Chaparral (Mesic)



Proposed ESH/RC map

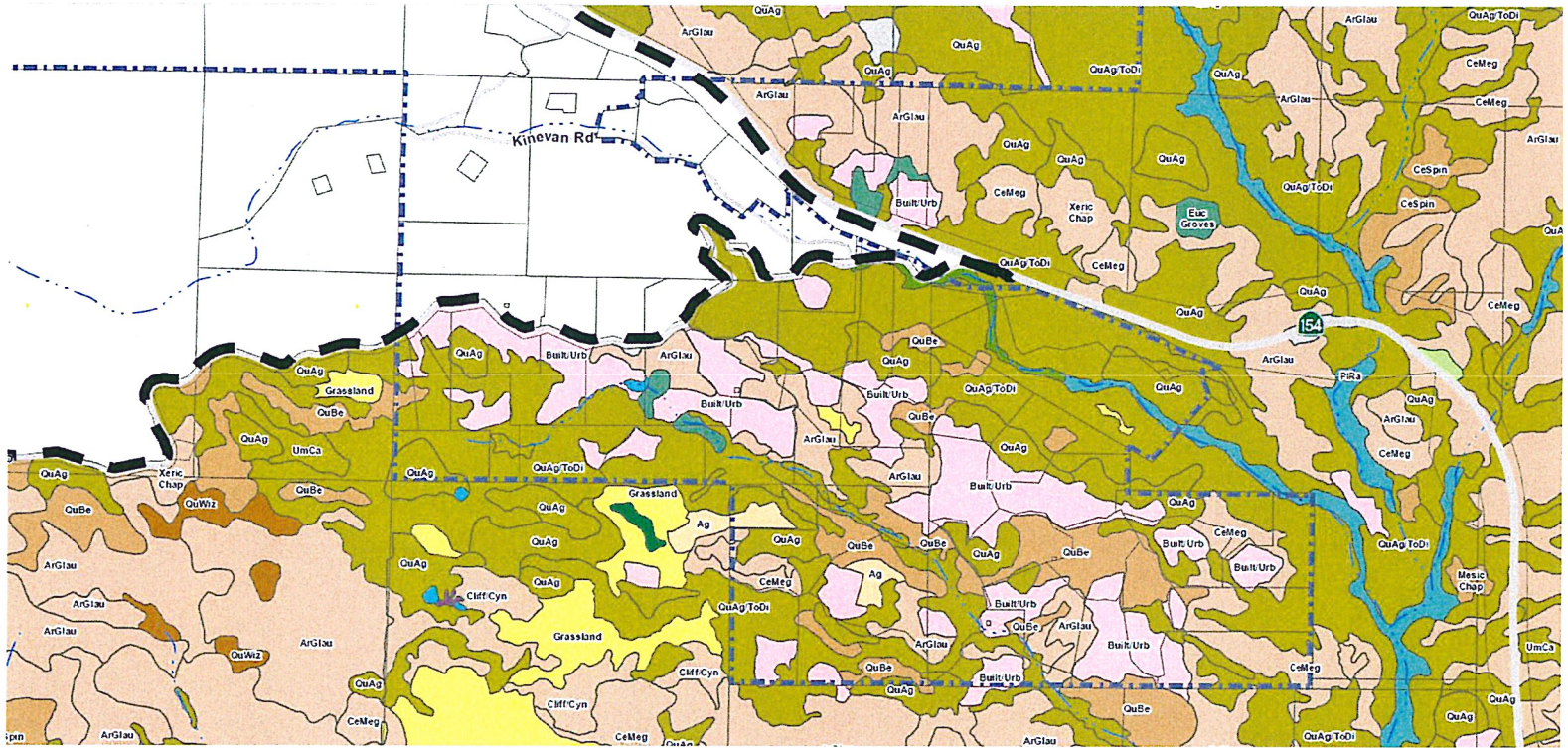
-  Oaks deleted
-  Oaks "created"



ESH/RC Map inconsistencies (NW corner only)

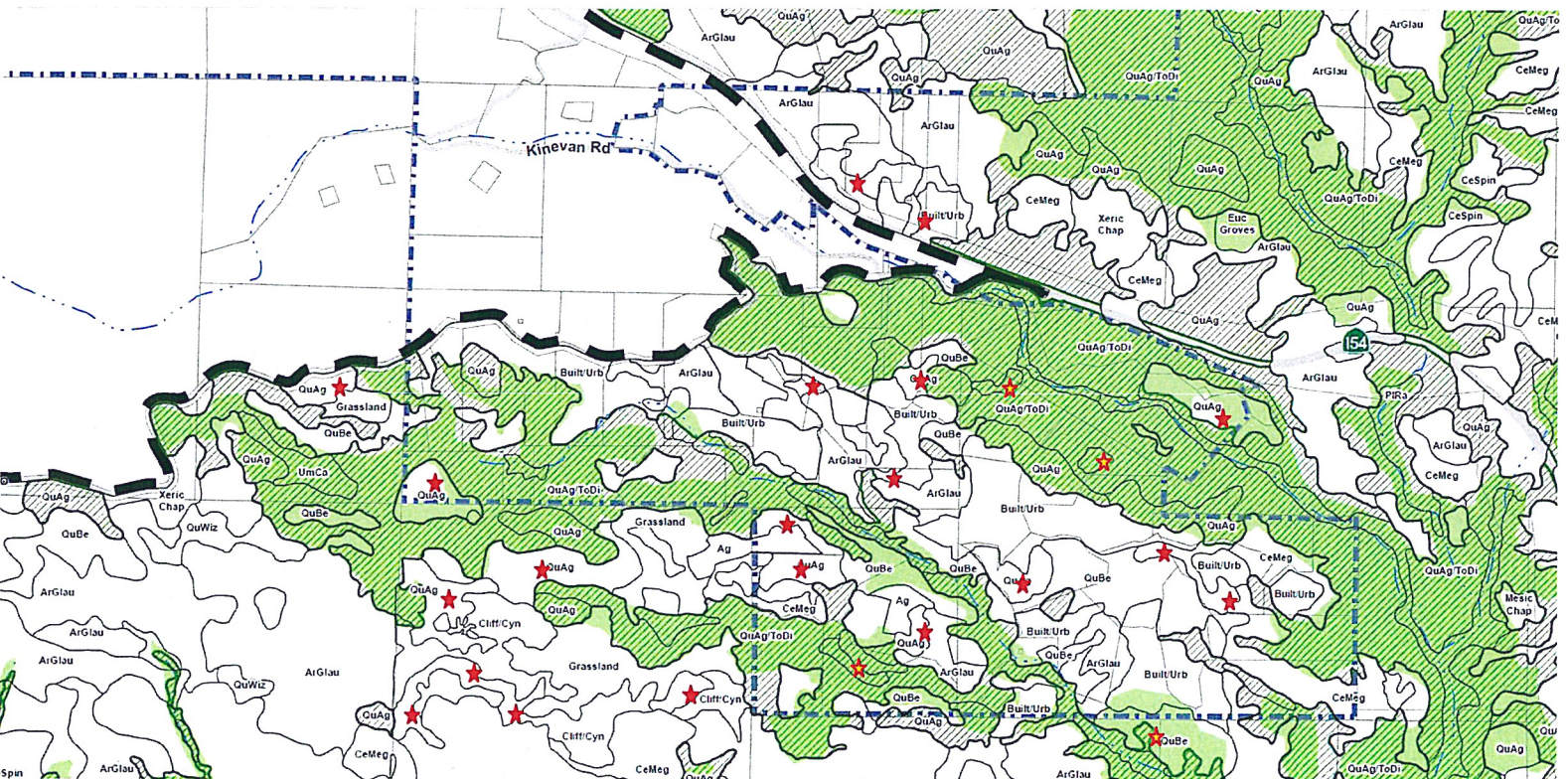
Vegetation map

□ Oak woodland □ Chaparral (Pre-Montane) □ Chaparral (Mesic)



Proposed ESH/RC map

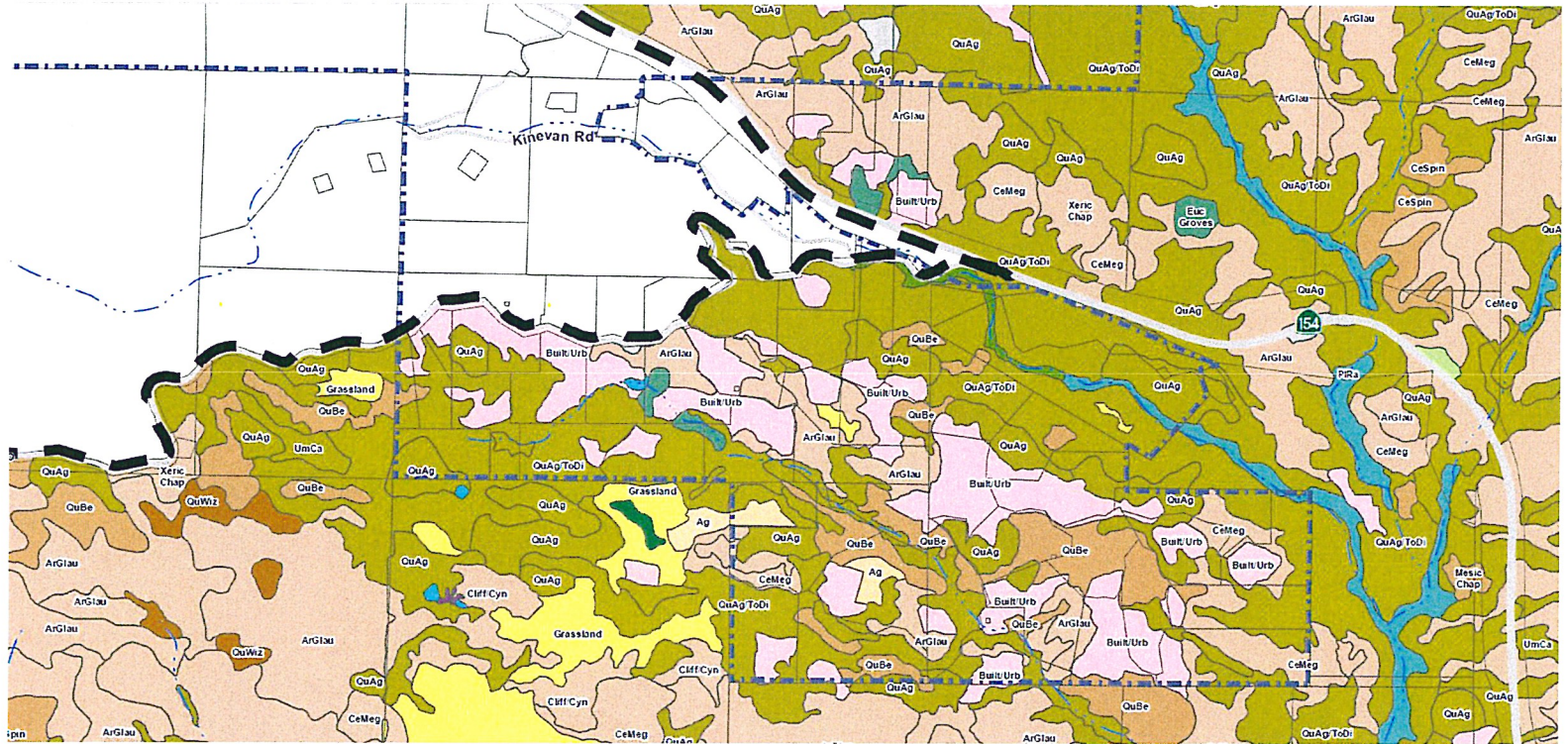
★ Oaks deleted ★ Oaks "created"



ESH/RC Map inconsistencies (NW corner only)

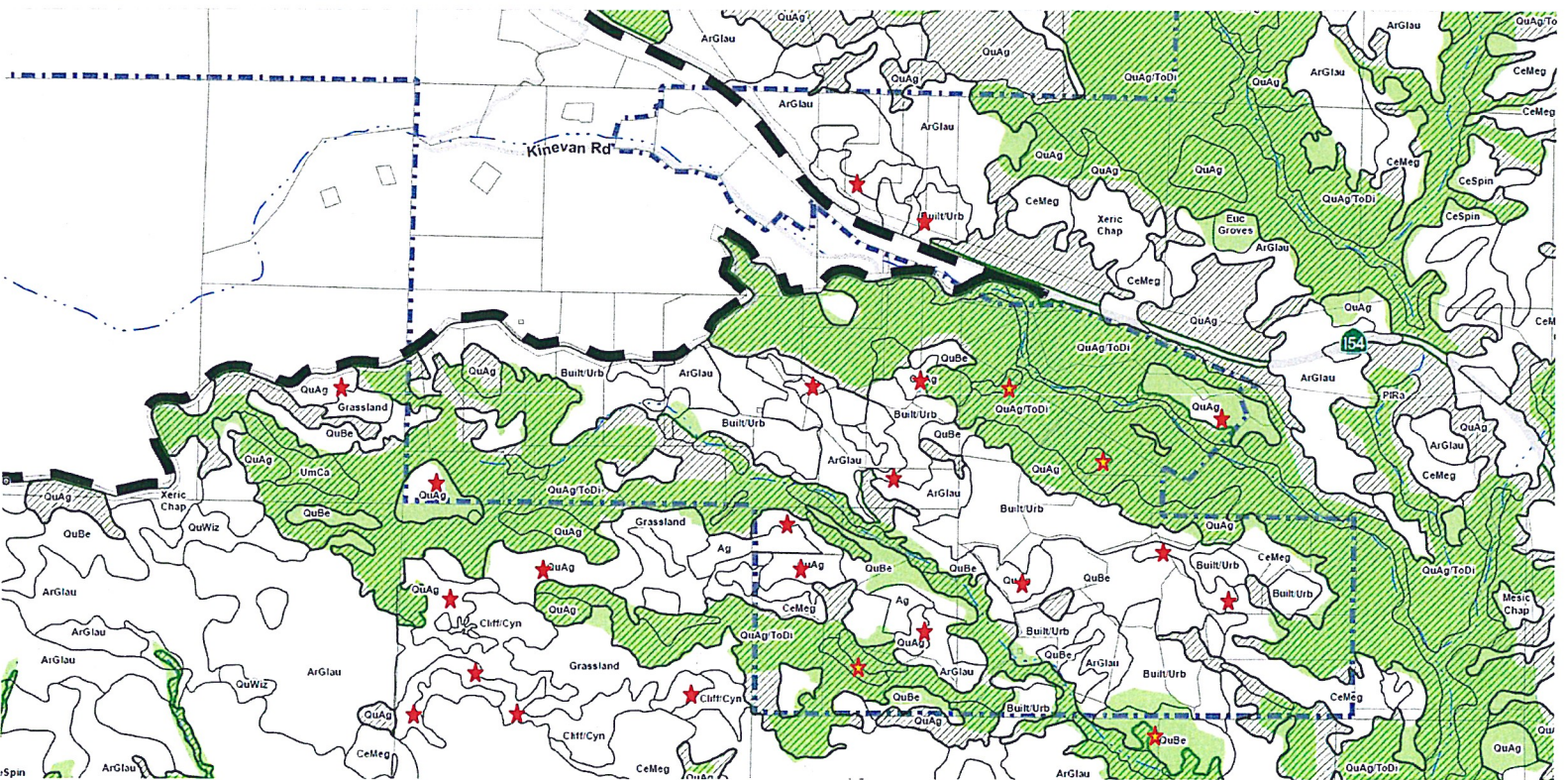
Vegetation map

Oak woodland Chaparral (Pre-Montane) Chaparral (Mesic)



Proposed ESH/RC map

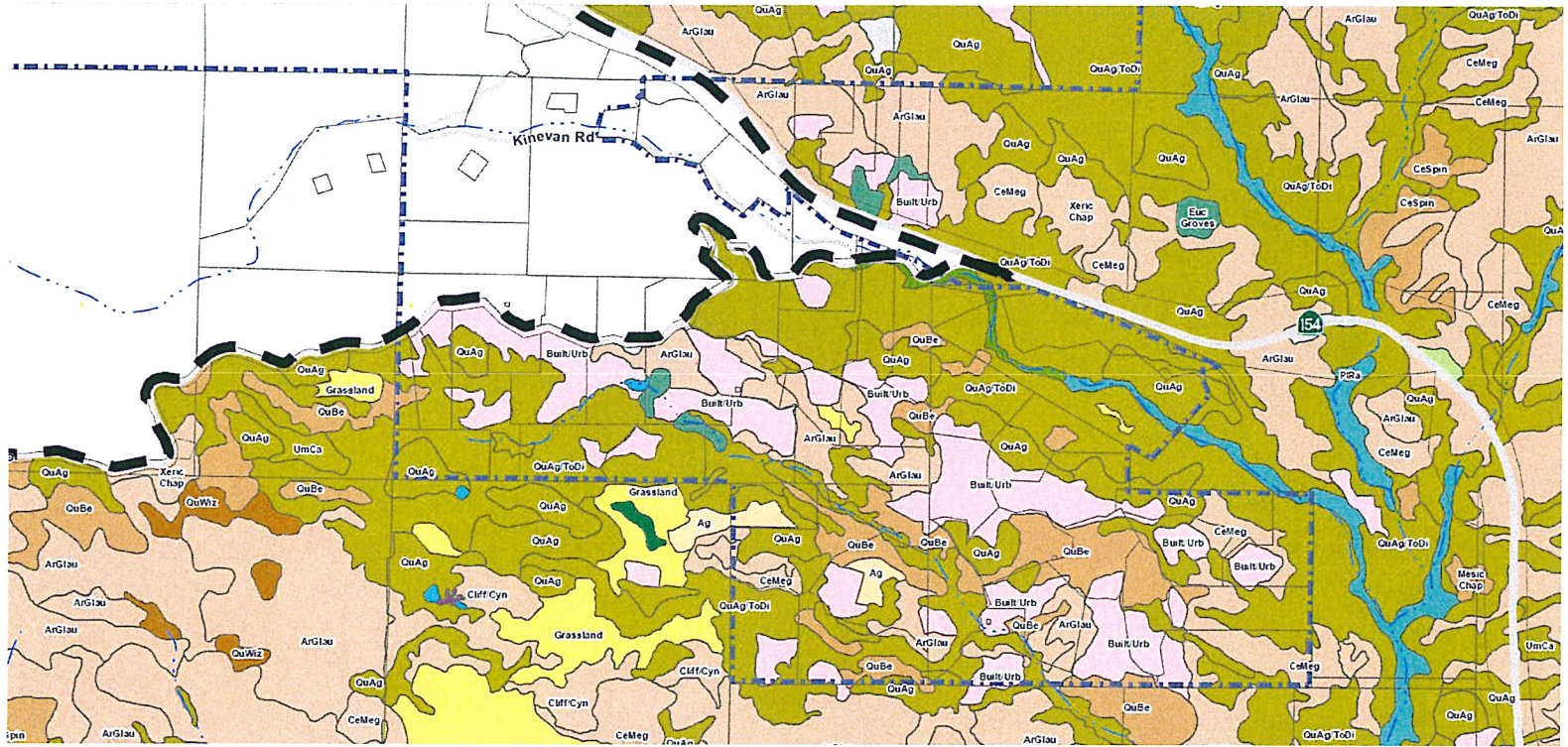
★ Oaks deleted ★ Oaks "created"



ESH/RC Map inconsistencies (NW corner only)

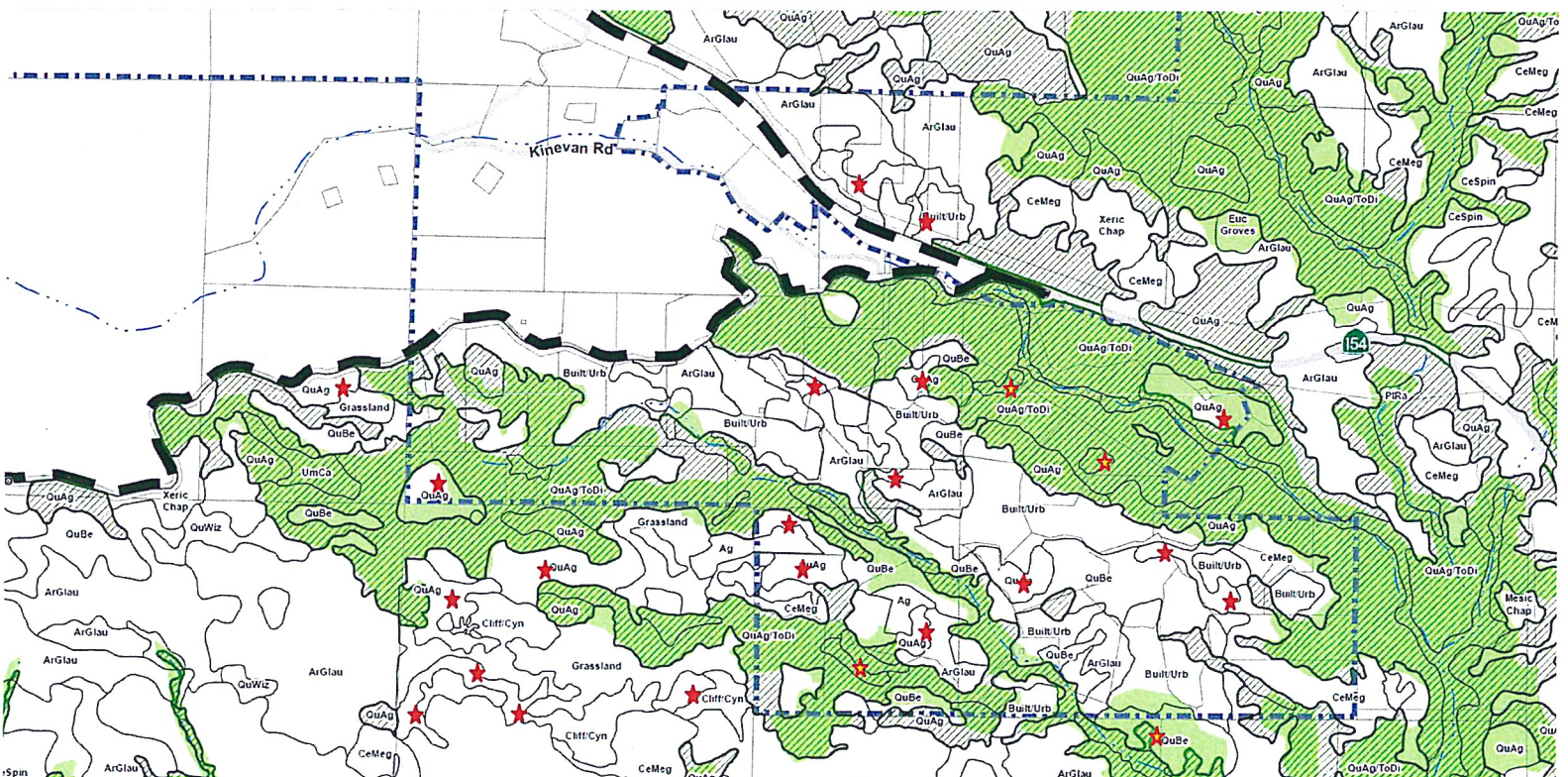
Vegetation map

□ Oak woodland □ Chaparral (Pre-Montane) □ Chaparral (Mesic)



Proposed ESH/RC map

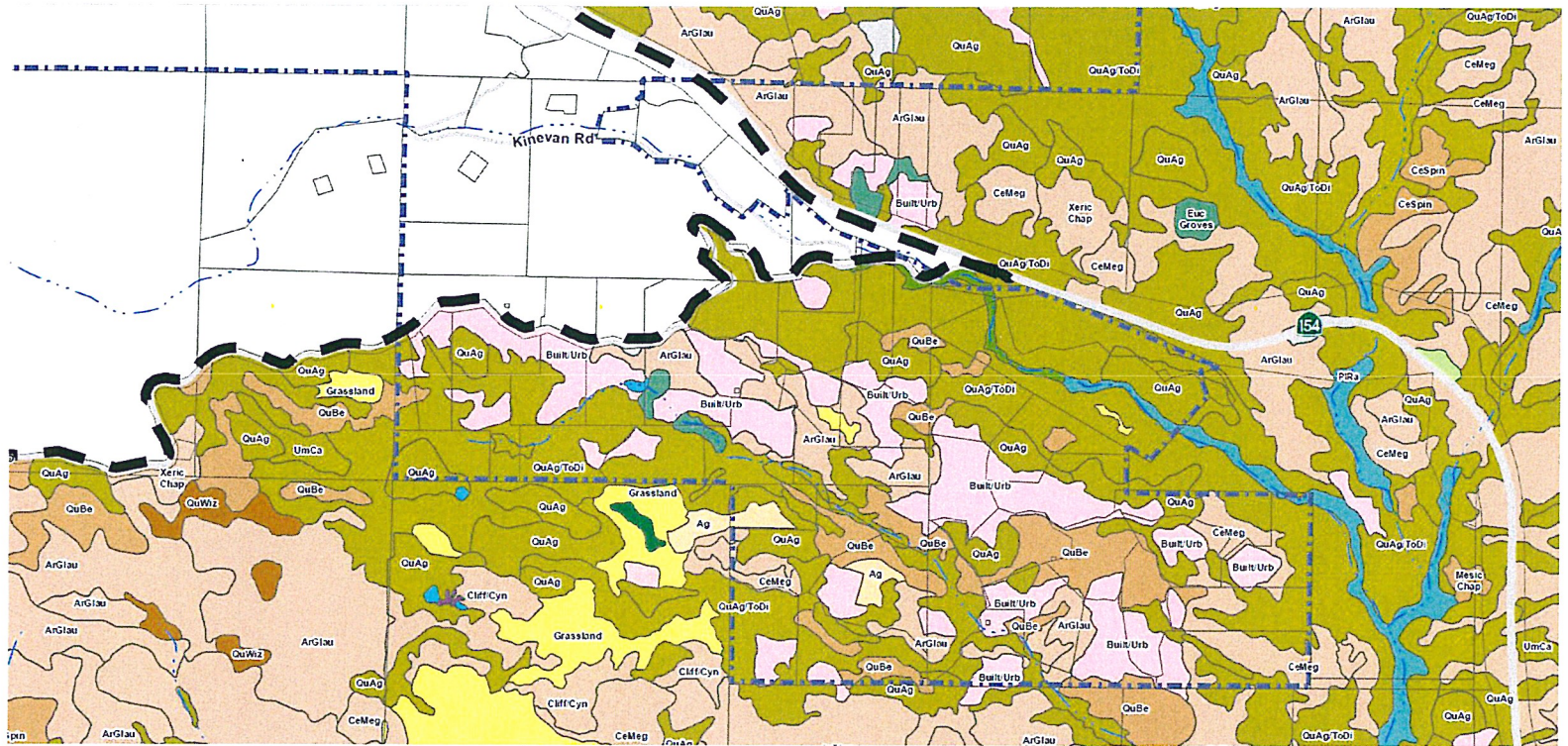
★ Oaks deleted ★ Oaks "created"



ESH/RC Map inconsistencies (NW corner only)

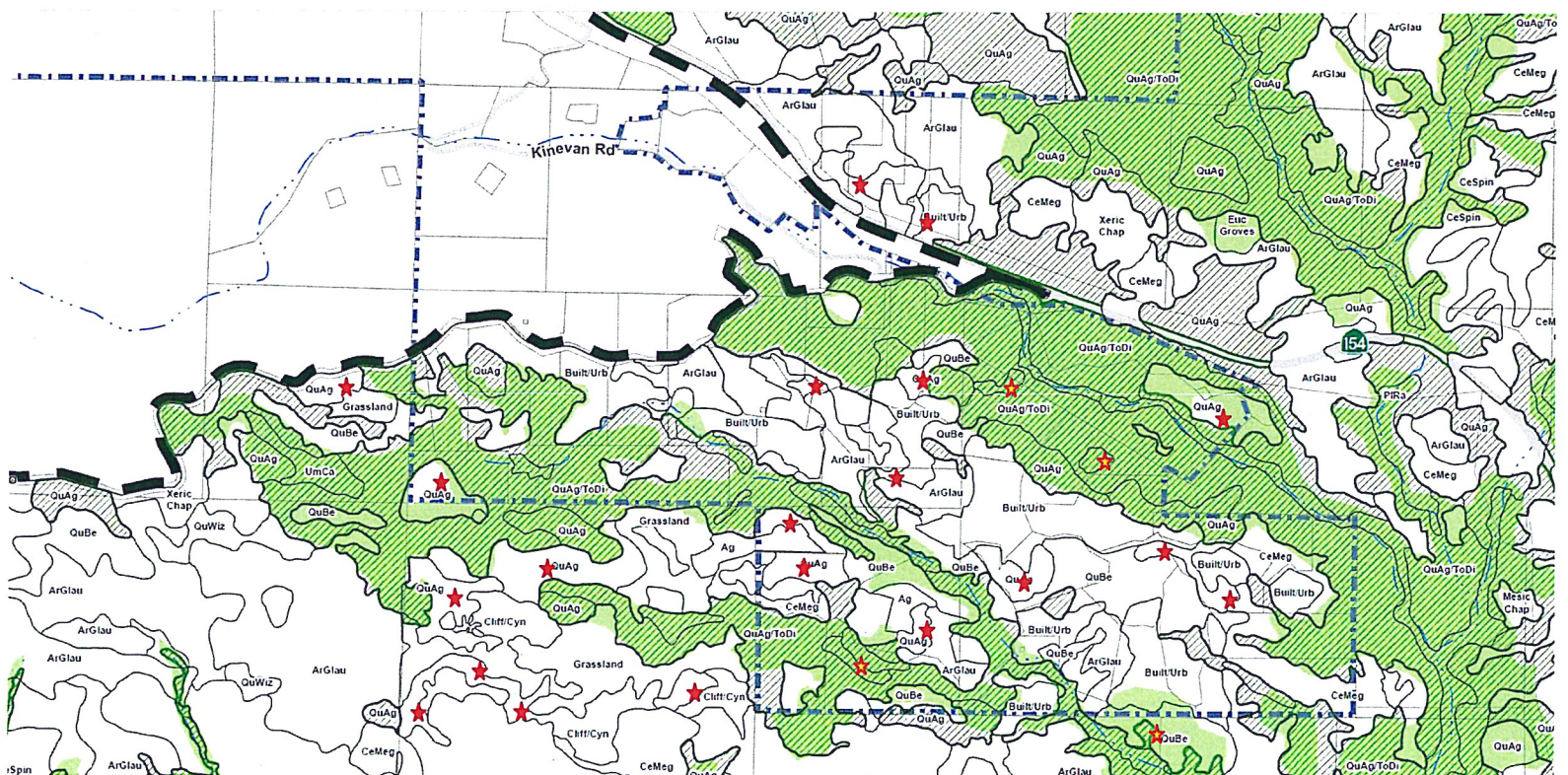
Vegetation map

□ Oak woodland ■ Chaparral (Pre-Montane) ■ Chaparral (Mesic)



Proposed ESH/RC map

★ Oaks deleted ★ Oaks "created"



Lenzi, Chelsea

From: Dolores Pollock <dolores.pollock@verizon.net>
Sent: Sunday, July 1, 2018 3:25 PM
To: sbcob
Subject: Gaviota Coast Plan Chaparral

Dear Clerk of the Board,

I support the Coastal Commission's suggested modifications to the Gaviota Coast Plan. Once those modifications are accepted, the Plan will be consistent with the Coastal Act, and I will support the Gaviota Coast Plan. The County should accept the Coastal Commission's suggested modifications including protecting chaparral.

Thank you.

Dolores Pollock
President, Santa Barbara Audubon Society
5553 Camino Cerralvo
Santa Barbara, CA 93111

Lenzi, Chelsea

From: annkhanna@twc.com
Sent: Monday, July 2, 2018 10:36 AM
To: sbcob
Subject: Regarding the hearing on chaparral protection scheduled for Tuesday, July 3, 2018
Attachments: edc letter chaparral july 2018.doc

Dear Sir or Madam,

Please accept the attached letter regarding the hearing tomorrow, Tuesday, July 3, 2018, about chaparral protection. Thank you. Ann Khanna.

ANN KHANNA

162 Ballston Avenue Saratoga Springs NY 12866 (518) 879-1195

July 2, 2018.

Santa Barbara County Board of Supervisors
105 East Anapamu Street
Santa Barbara, CA 93101

Dear Sir or Madam:

We urge the Board to approve the updated ESH map, which maps some chaparral as ESH. Chaparral is one of the rarest biomes on the planet. Chaparral contains more plant species than any other vegetation community in California. However, the ESH map excludes most ESHs, including all rare species' habitats. The ESH map should map all known ESHs—including rare species habitats-- in order to better inform landowners, the public, and land use planners about the presence of sensitive habitats that should be protected when possible. Please direct planning staff to add the rare species data to the ESH map to make it more complete. Thank you for your time.

Sincerely,

Ann Khanna.