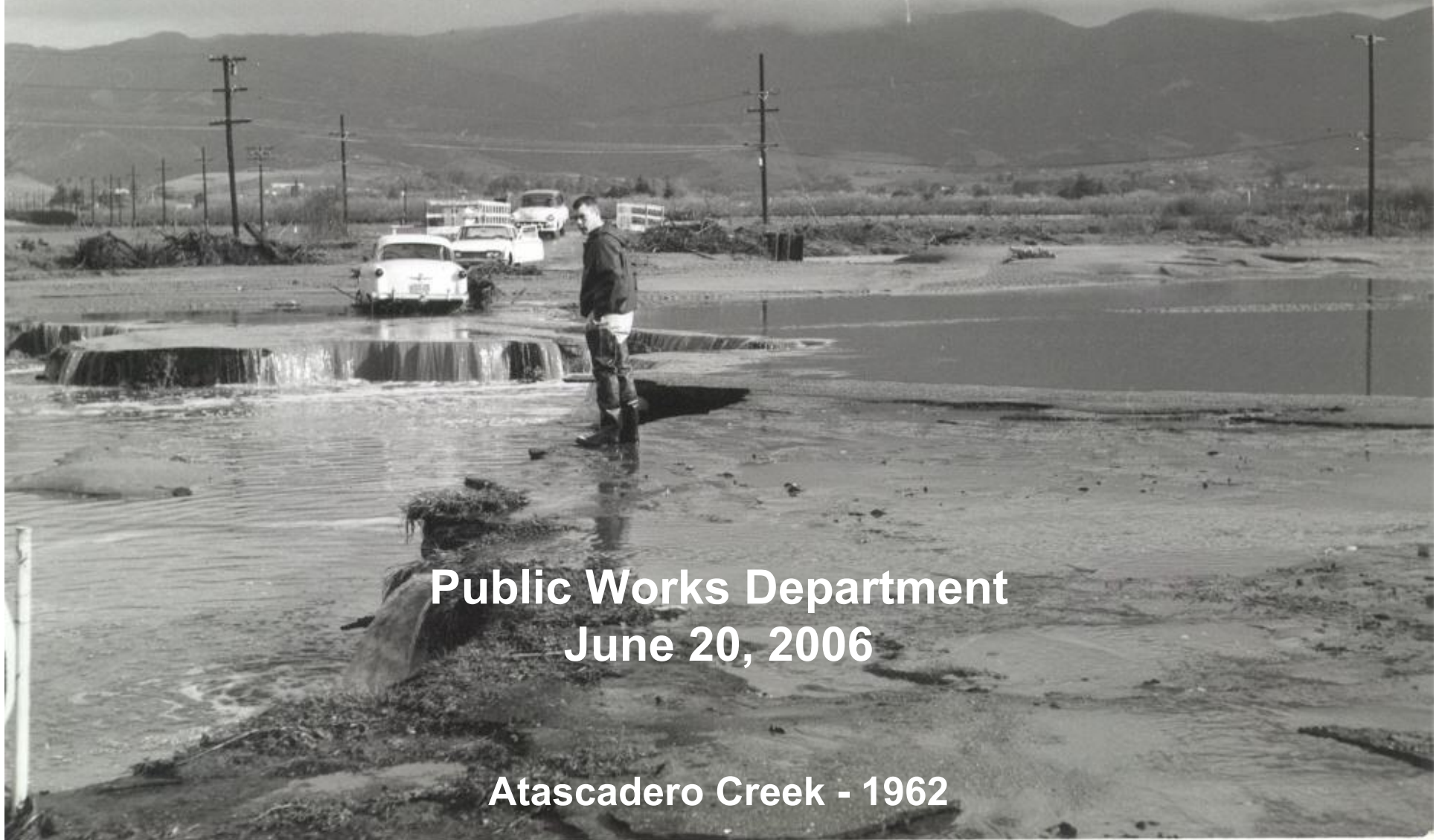


# 2006 – 2007 Flood Control Annual Maintenance Plan



**Public Works Department  
June 20, 2006**

**Atascadero Creek - 1962**

# Annual Plan – General Process

- **March / April** – Creek Inspections
- **May** – Project Descriptions Written
- **May 16** – Project Summary Available
- **May 24, 25** – Public Workshops
- **June 8** – Annual Plan Complete
- **June 20** – Board Hearing
- **August** – Permits Secured, Work Starts
- **December** – Work Completed

## ANNUAL ROUTINE MAINTENANCE PLAN

FISCAL YEAR 2006-2007



Prepared by

The Santa Barbara County Flood Control and Water  
Conservation District

# Project Summary

## **North County:**

- Santa Maria Airport/  
Abex Channels
- Bradley Canyon Channel
- Cat Canyon Creek
- Cebada Canyon Creek
- Foxenwood 3 Basin
- Lompoc Storm Drain Outlet
- Los Pinos Creek
- Miguelito Channel Outlet
- North Green Canyon Drainage
- Orcutt/Solomon Creek
- Rodeo/San Pascual  
Channel Outlet
- San Antonio Creek – Los Alamos
- Santa Maria River
- Unit II, West Main,  
Unit II Tailwater, and East Channels
- San Pascual Creek

## **South County:**

- Arroyo Burro Creek
- Atascadero Creek
- Canada De La Pila Creek
- Carneros Creek
- Cieneguitas Creek
- Las Positas Creek
- Maria Ygnacio Creek
- Mission Creek
- Refugio Creek
- San Jose Creek
- San Pedro Creek
- Sycamore Creek
- Tecolote Creek
- Toro Canyon Creek

# Santa Maria River Levee Proposed Pilot Channel

-Project will redirect impinging flows off the Levee and towards the Center of the river.

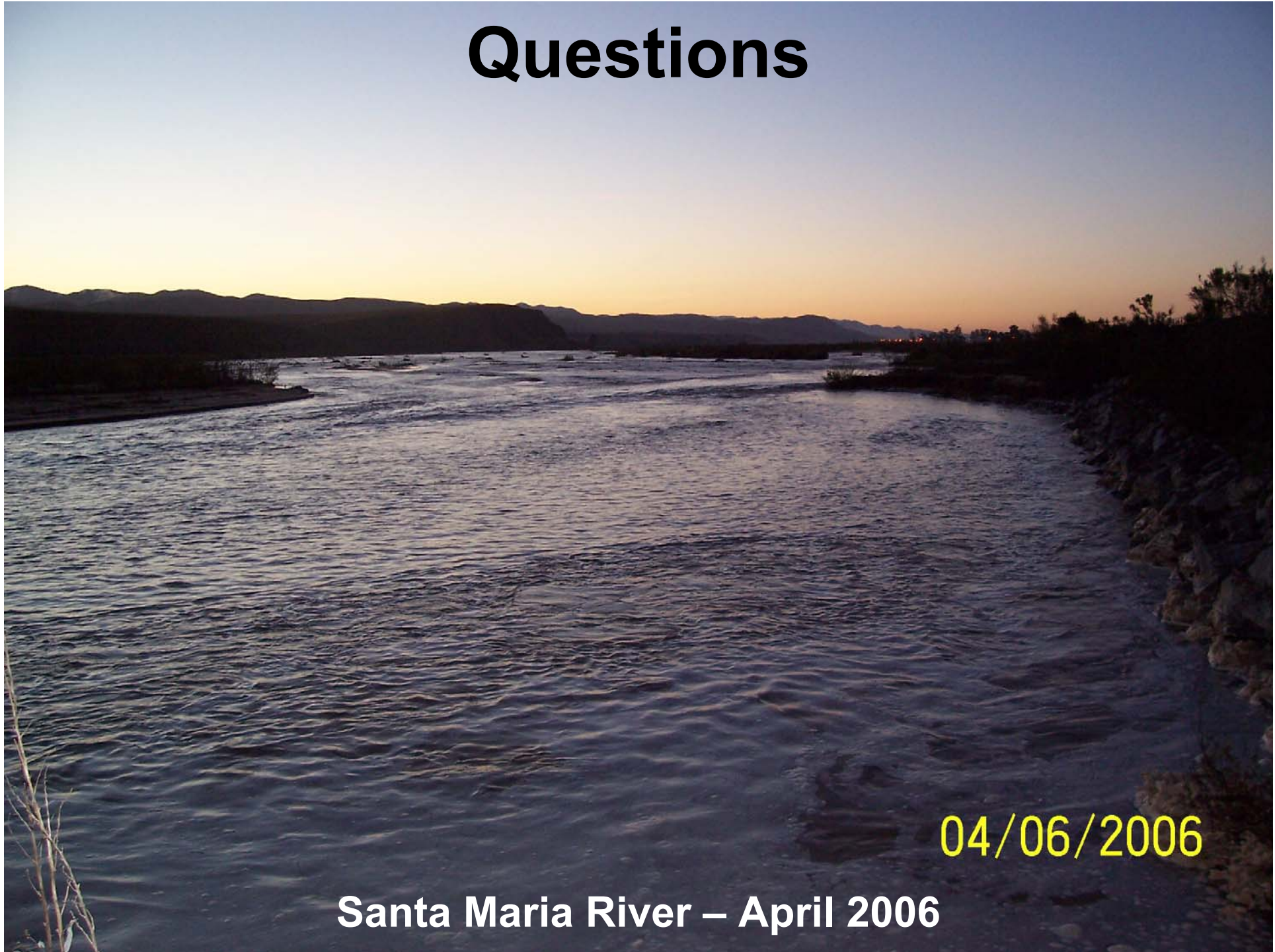
-Similar project west of SM by Bonita School Road Crossing (past Levee Breach)

Current Attack Point

Earlier Flow Path



# Questions



04/06/2006

Santa Maria River – April 2006

