

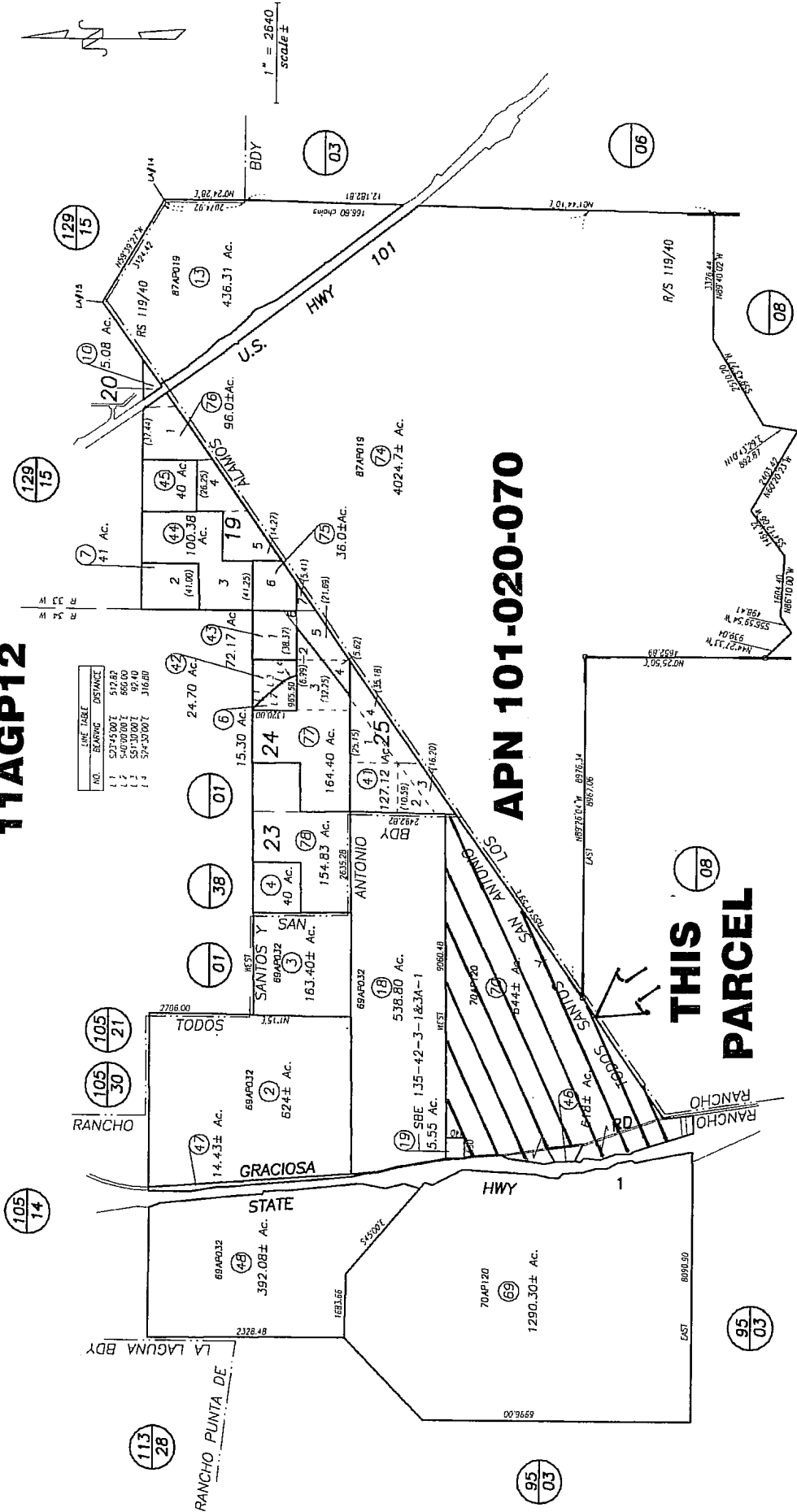
ATTACHMENT 3 – VICINITY MAP

Exhibit B

POR. RANCHOS LOS ALAMOS & TODOS SANTOS Y SAN ANTONIO
 POR. T9N R33 & 34W SBB&M

101-02

11AGP12



NO.	BEARING	DISTANCE
1	S 37° 43' 00" E	519.27
2	S 40° 00' 00" E	862.40
3	S 51° 30' 00" E	92.40
4	S 54° 30' 00" E	316.80

APN 101-020-070

THIS PARCEL

Assessor's Map Bk, 101-Pg, 02
 County of Santa Barbara, Calif.

NOTICE
 Assessor's Parcels are for tax assessment purposes only and do not indicate either parcel legality or a valid building site.

08/09 Correct boundary between 75 & 76