

Davy Brown and Munch Creek Fish Passage Designs

AND

Gaviota Creek Fish Passage Engineering Project

June 20, 2017

Mauricio Gomez, Director

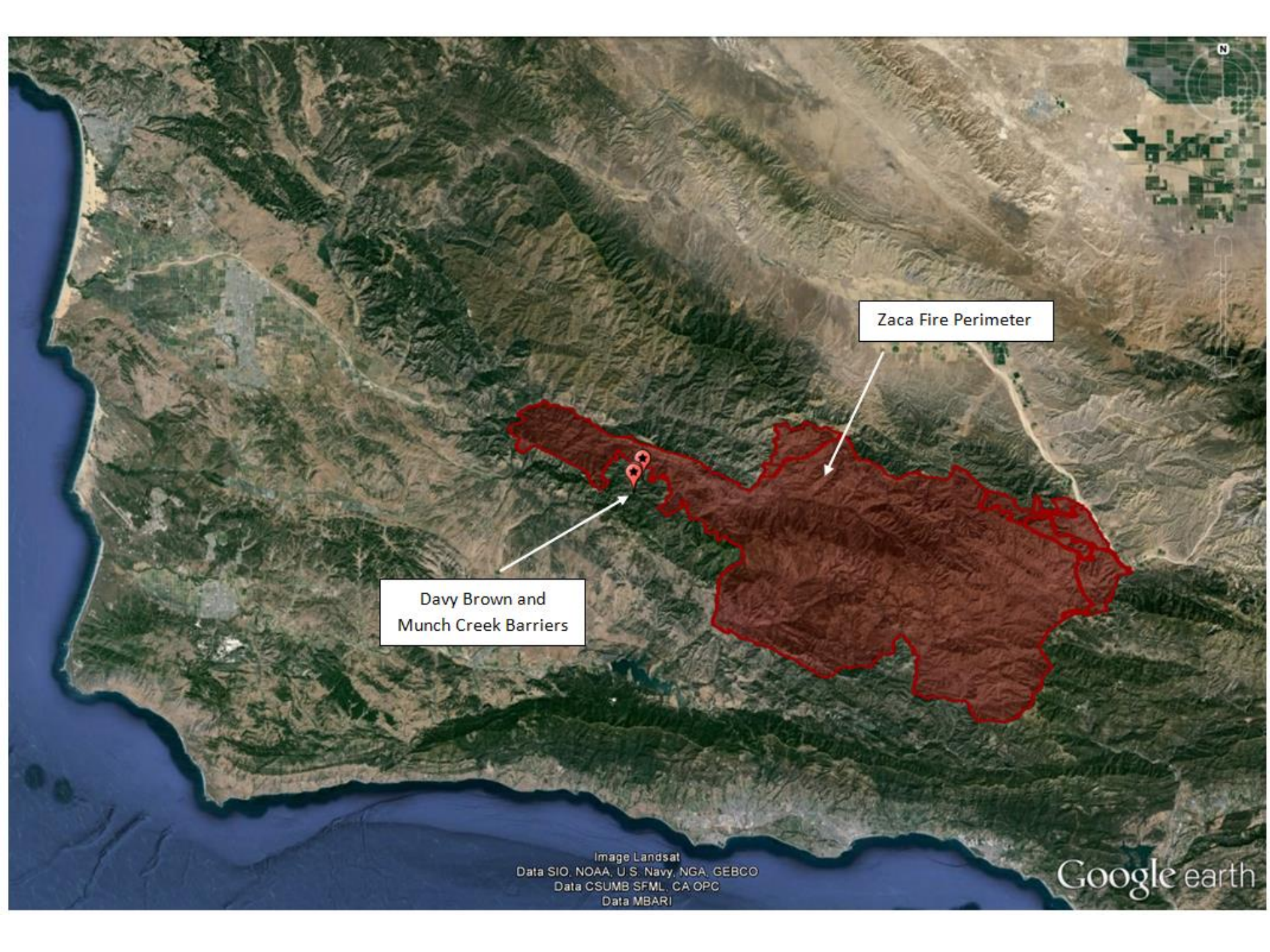
South Coast Habitat Restoration

Santa Barbara County Board of Supervisors

Coastal Resources Enhancement Fund Hearing

Davy Brown and Munch Creek Fish Passage Engineering Project

- Located within 5th Supervisorial District
- Rated as Core 1 Watershed by NOAA Fisheries Steelhead Recovery Plan (2012)
- Partnership with:
 - Los Padres National Forest
 - National Fish and Wildlife Foundation
 - California Dept of Fish and Wildlife
 - NOAA



Zaca Fire Perimeter

Davy Brown and
Munch Creek Barriers

Image Landsat
Data SIO, NOAA, U.S. Navy, NGA, GEBCO
Data CSUMB SFML, CA OPC
Data MBARI

Google earth

Project

- Develop 100% engineering designs for the removal of the three barriers to steelhead trout migration, one on Munch Creek and two on Davy Brown Creek.
- The current crossings/barriers decrease access to excellent habitat in this section of the Manzana Creek watershed which was not impacted by the Zaca Fire.
- There are no major barriers to migration in the lower portions of the watershed from the Pacific Ocean up to these barriers on Davy Brown and Munch Creeks
- Completion of designs will allow for the removal of the three barriers which will allow steelhead access to the perennial headwaters of the creek and ~3.13 miles of habitat.



Looking upstream at Munch Creek barrier



Looking upstream at upper Davy Brown Creek barrier



Looking upstream at lower Davy Brown Creek barrier

Partnership

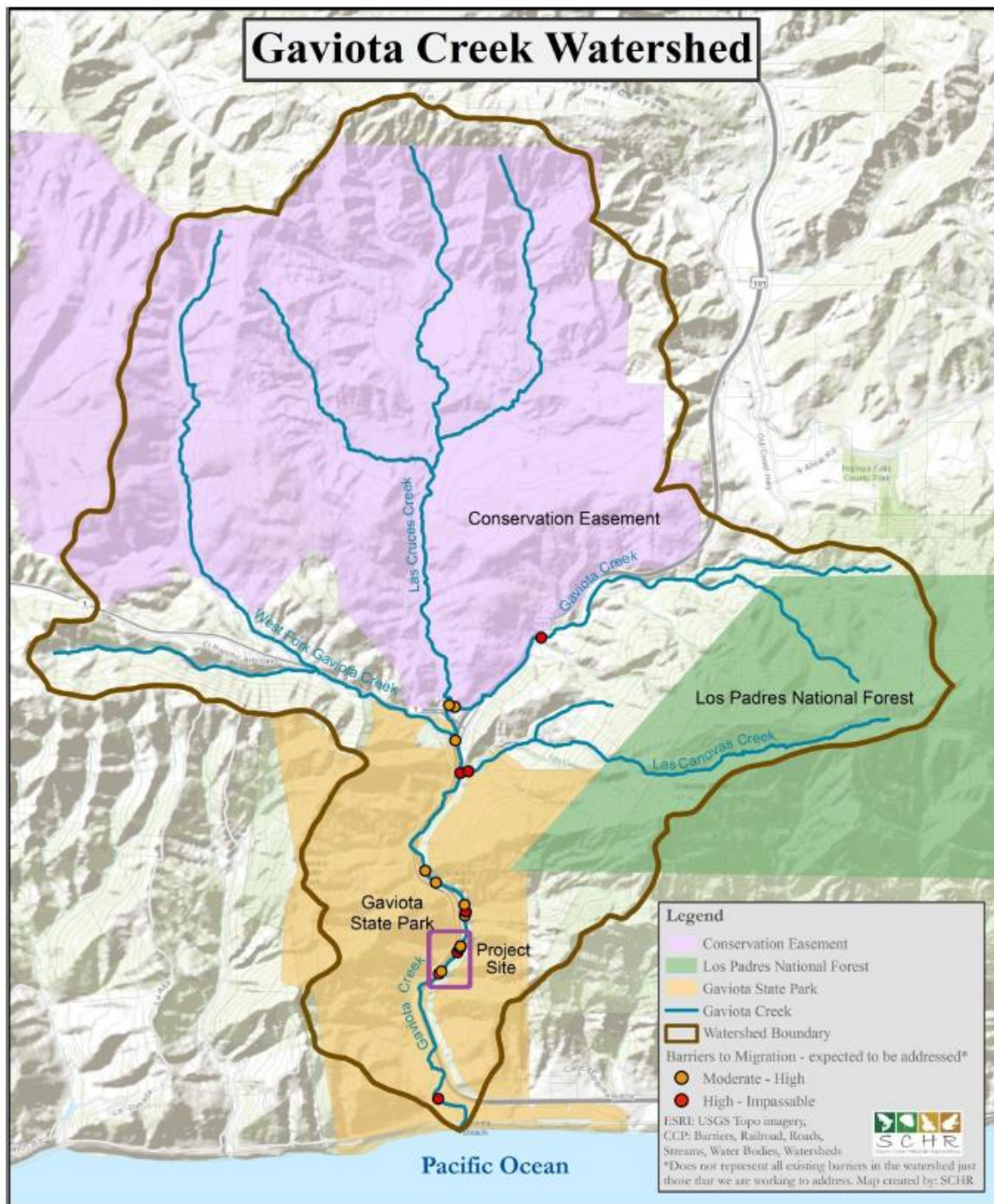
- Los Padres National Forest
- National Fish and Wildlife Foundation
- California Department of Fish and Wildlife
- NOAA



Gaviota Creek Fish Passage Engineering Project

- Located within 3rd Supervisorial District
- Rated as Core 2 Watershed by NOAA Fisheries Steelhead Recovery Plan (2012)
- Partnership with:
 - CalTrans
 - California State Parks
 - Coastal Ranches Conservancy
 - SB Foundation
 - Bower Foundation
 - Patagonia

Gaviota Creek Watershed



Legend

- Conservation Easement
- Los Padres National Forest
- Gaviota State Park
- Gaviota Creek
- Watershed Boundary

Barriers to Migration - expected to be addressed*

- Moderate - High
- High - Impassable

ESRI: USGS Topo imagery,
CCP: Barriers, Railroad, Roads,
Streams, Water Bodies, Watersheds

*Does not represent all existing barriers in the watershed just those that we are working to address. Map created by: SCHR



Project

- Develop conceptual designs for the removal of five barriers to steelhead trout migration along Gaviota Creek.
- The barriers limit migration for steelhead trout, a federally endangered species.
- Gaviota Creek has been the focus of many studies and plans, our efforts are building off of a partnership to implement recommendations from these past studies.
- Completion of designs will allow for the future removal of the five barriers which will allow for access the perennial headwaters of the creek.



Looking upstream at one of barriers along Gaviota Creek



Looking sideways at one of barriers along Gaviota Creek

Partnership

- Coastal Ranches Conservancy
- CalTrans
- California State Parks
- California Department of Fish and Wildlife
- NOAA
- Patagonia
- Santa Barbara Foundation
- Bower Foundation
- South Coast Habitat Restoration



Thank you!



Maria Ygnacio Creek – March 2017

Mauricio Gomez, Director
South Coast Habitat Restoration
SB County Board of Directors
CREF Hearing