



SANTA BARBARA COUNTY

Resource Recovery &

Waste Management Division

Innovative Environmental Solutions

County of Santa Barbara Solid Waste Reduction Report

October 15, 2024

Goals of the Report

- Summarize waste generation and disposal trends
- Provide information about the County's existing programs
- Share results of the May 2024 Community Waste Reduction Survey
- Summarize internal County initiatives
- Identify potential new or expanded initiatives

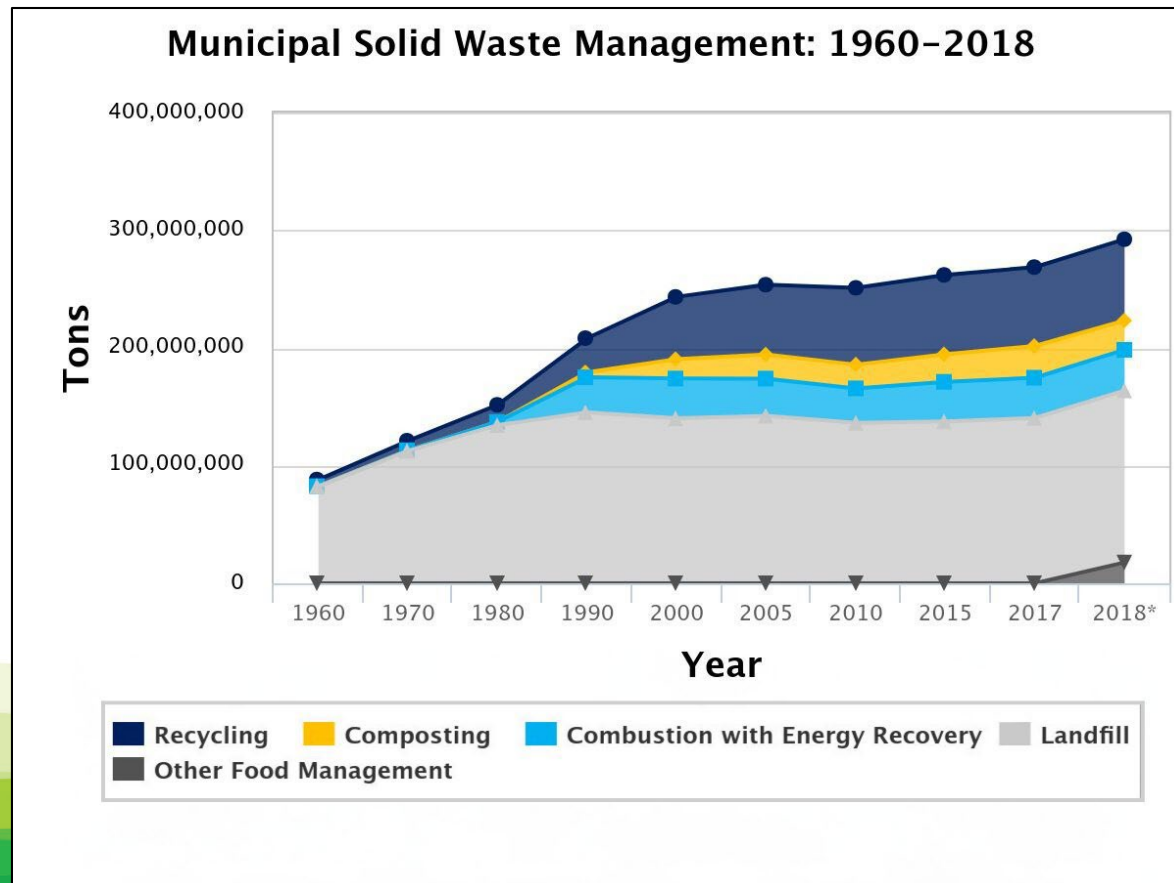
A History of Successful Diversion

- The County has a high diversion rate compared to the world, the nation, and other jurisdictions in California
 - County – 62%
 - California – 41%
 - United States – 38%
- Multiple awards received by the County – SWANA, CSAC, NACo

A History of Successful Diversion

- Countries with higher diversion rates typically use incinerators or other thermal processes
- The County's success is predicated upon continually implementing new programs and technologies, including the ReSource Center's use of the latest European waste processing equipment

National Solid Waste Trends

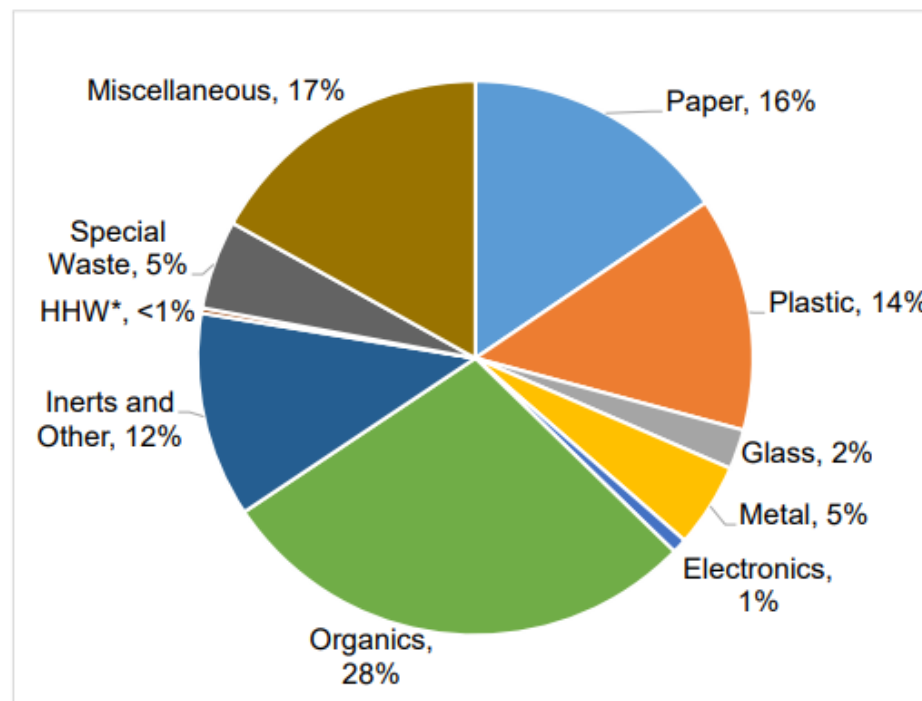


- Waste generation continuing to increase
- Recycling, composting, and combustion also increasing
- “Other Food Management” now tracked (animal feed, donation, co-digestion/ anaerobic digestion, bio-based materials/biochemical processing, land application, and sewer/wastewater treatment)

Solid Waste Trends in California

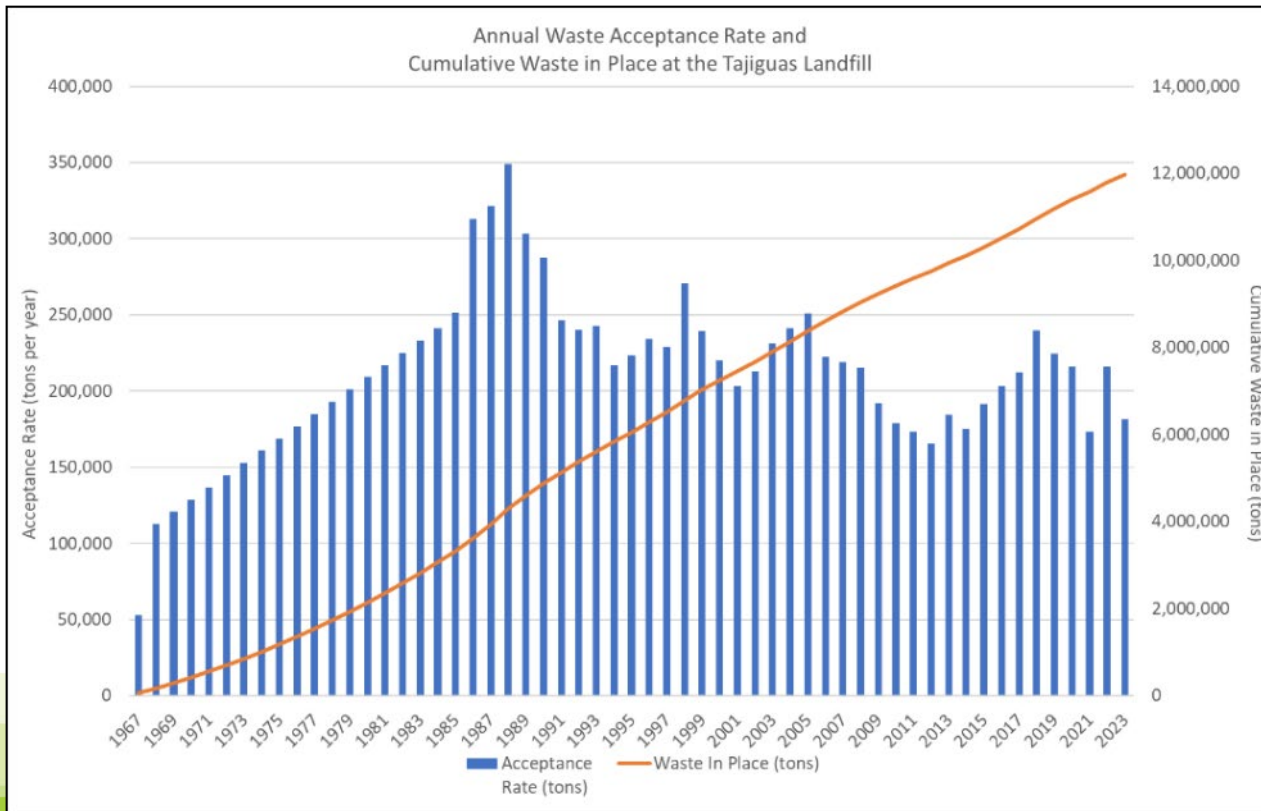
- Waste generation more than doubled in last decade
- 2022 per capita disposal – 6.3 lbs/day
- 2021 waste characterization – organics (including paper) and plastics largest segments of the waste stream

Figure 1: Material Categories in California's Overall Disposed Waste Stream



*HHW: Household Hazardous Waste

Local Trends – Tajiguas Landfill



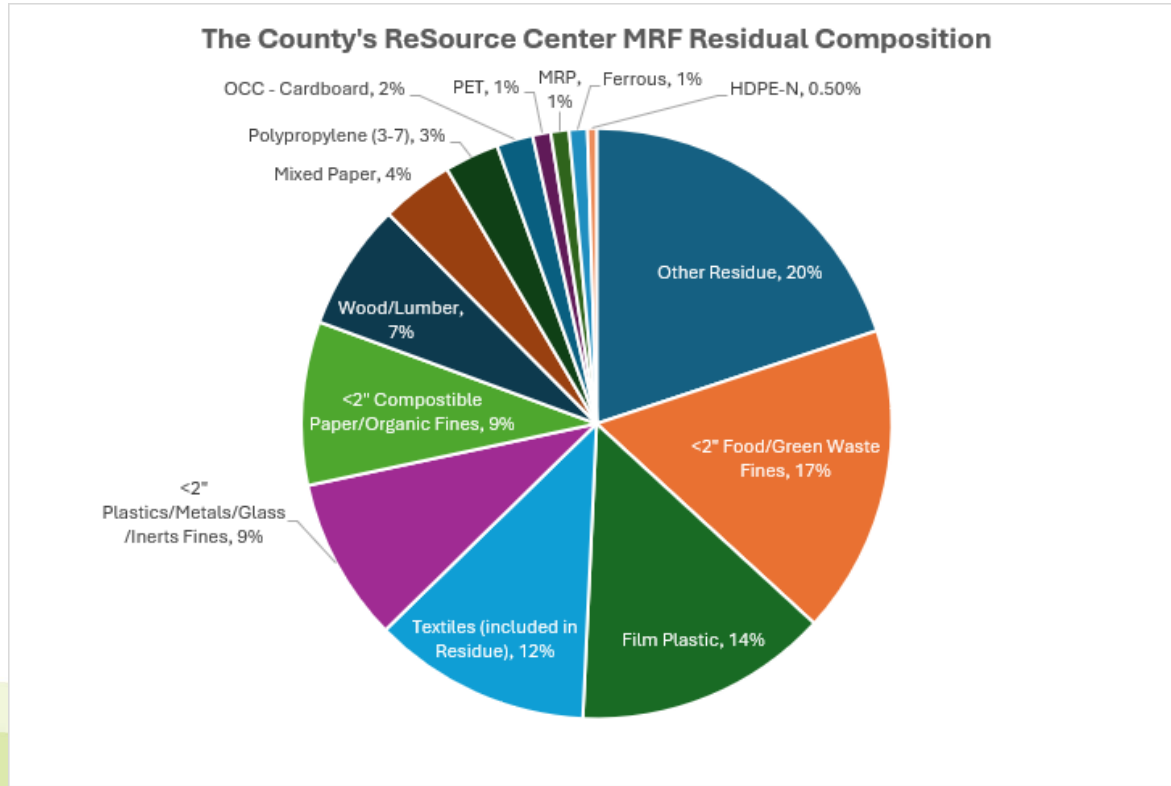
- Waste generation continuing to increase
- Increased diversion through recycling and composting programs
- Per capita disposal – 5.97 lbs/day
- Capacity Increase Project will extend the life of Tajiguas until 2038
- Landfilled waste expected to decrease with the full operation of the County's ReSource Center

ReSource Center



- Materials Recovery Facility (MRF), Anaerobic Digestion Facility (ADF), and Compost Management Unit (CMU)
- Use of advanced technologies
- Increased diversion of recyclables and organics
- Significant reduction in greenhouse gas emissions
- Production of renewable energy

ReSource Center MRF Residual



- Waste characterization conducted in December 2022
- Organics “fines” and other residual largest components
- Film plastics and textiles also significant components

Waste Diversion Programs

- Residential and commercial source-separated recycling and organics collection
- Backyard composting
- Mulch distribution
- Edible food recovery
- Household hazardous waste collection



Waste Diversion Programs

- Electronic waste recycling
- Used oil recycling
- Home-generated sharps collection
- Household medication collection
- Mattress recycling
- Carpet recycling



Waste Diversion Programs

- Bulky item collection/recycling
- Construction waste recycling
- Battery recycling
- Textiles recovery
- Code enforcement



Outreach and Education

- LessIsMore.org website
- Less Is More Waste Reduction Guide
- Annual campaigns
- School education program
- Facility tours
- Community events/partnerships
- Social media



Community Waste Reduction Survey

- Conducted in May 2024
- Over 400 responses received
- Highest engagement among those aged 55+ and living in the South County
- Convenience #1 factor for waste reduction
- Recycling #1 waste reduction method
- Preferred methods of education



Internal County Initiatives

- Green Business Program certification
- Environmentally preferable purchasing
- Surplus inventory program
- Reusable “Party Pack” program
- Climate Resilient SBC lunch-and-learns



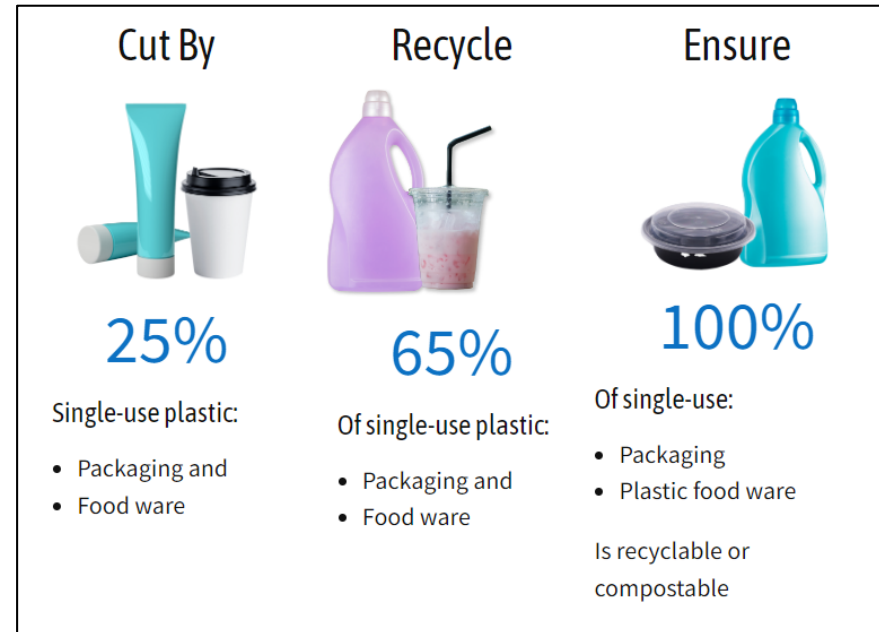
Potential New or Expanded Initiatives: Textiles



- April 2024 Textiles Recycling Workshop
- Repair and reuse highest priority
- SB 707 – Signed by the Governor!
- Pursuing new partnership with MarBorg and Southern California processor

Potential New or Expanded Initiatives: Film Plastics

- Fostering local recycling outlets
- Statewide plastic grocery bag ban
- SB 54 – Plastic Pollution Prevention and Packaging Producer Responsibility Act



Ongoing Initiatives

- Continued legislative advocacy, particularly for extended producer responsibility (EPR) legislation
- Increased certification of County facilities under the Green Business Program



Thank you! Questions?



one
COUNTY
one
FUTURE



SANTA BARBARA COUNTY

Innovative Environmental Solutions

www.LessIsMore.org