

Acin Ranch

Historic Mining Investigation

Law Office of Marc Chytilo
May 8, 2018



Objective Manifestations

- Tangible physical evidence, rather than memory or personal anecdote
- Dated records, contracts, documents, photographs, maps
- Must be prior to enactment of County Ordinance 971 on September 29, 1958

Signature of Mining Activity

- Accounts of early mining activity state that hand tools (picks, shovels) were used to quarry stone from easily accessible areas and loaded by hand onto pickup trucks for transport.
- This activity would create a signature of a two-wheel tire track road terminating in an area of light soil disturbance *unrelated* to farming
- This signature is what is needed to achieve the standard of objective manifestation of intent to mine
- No evidence of this signature in any areas outside of the known quarry site before the effective date of September 29, 1958

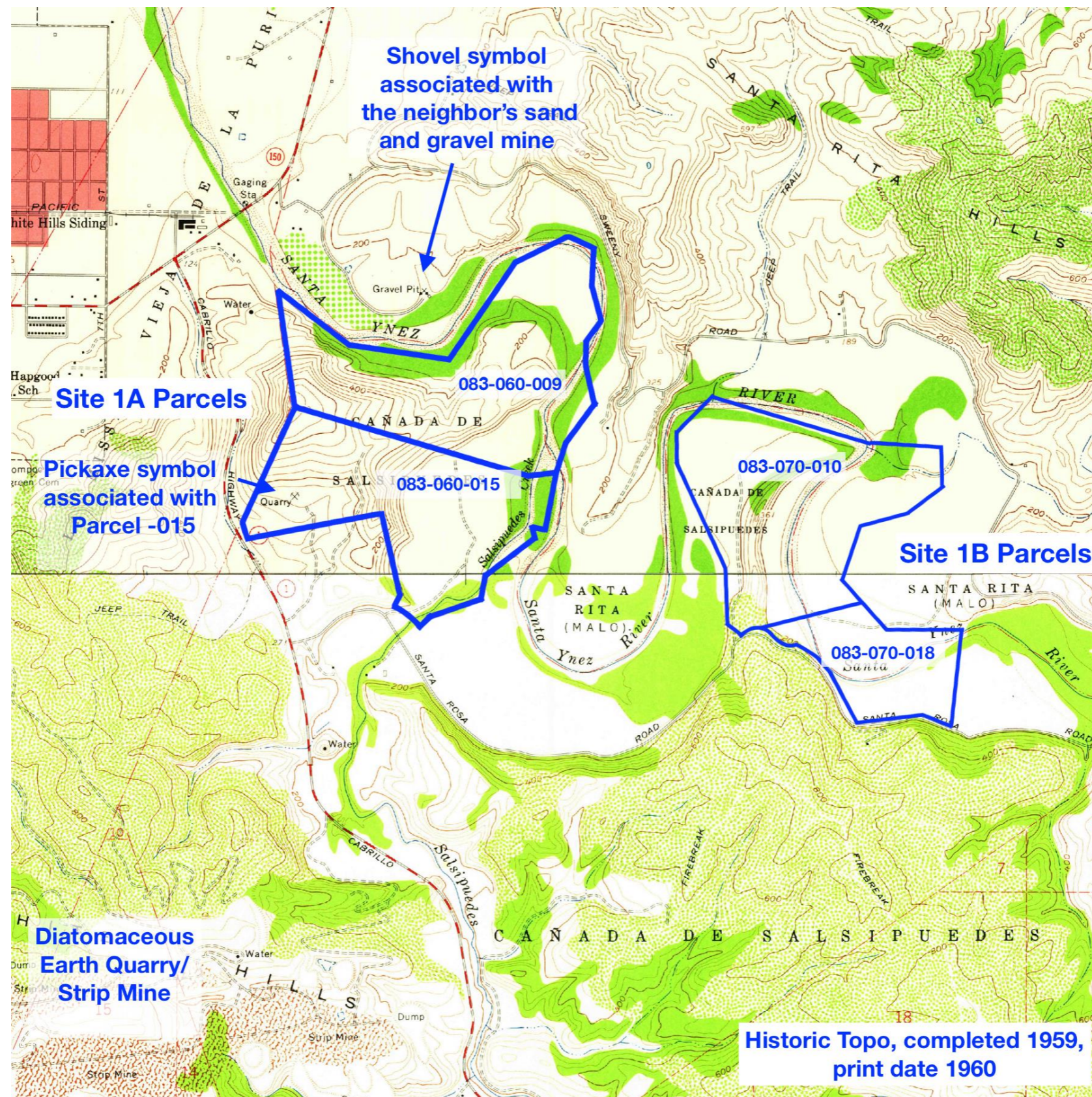


Fig. 1. Historic USGS Topographical Map dated 1959, field work completed in 1958

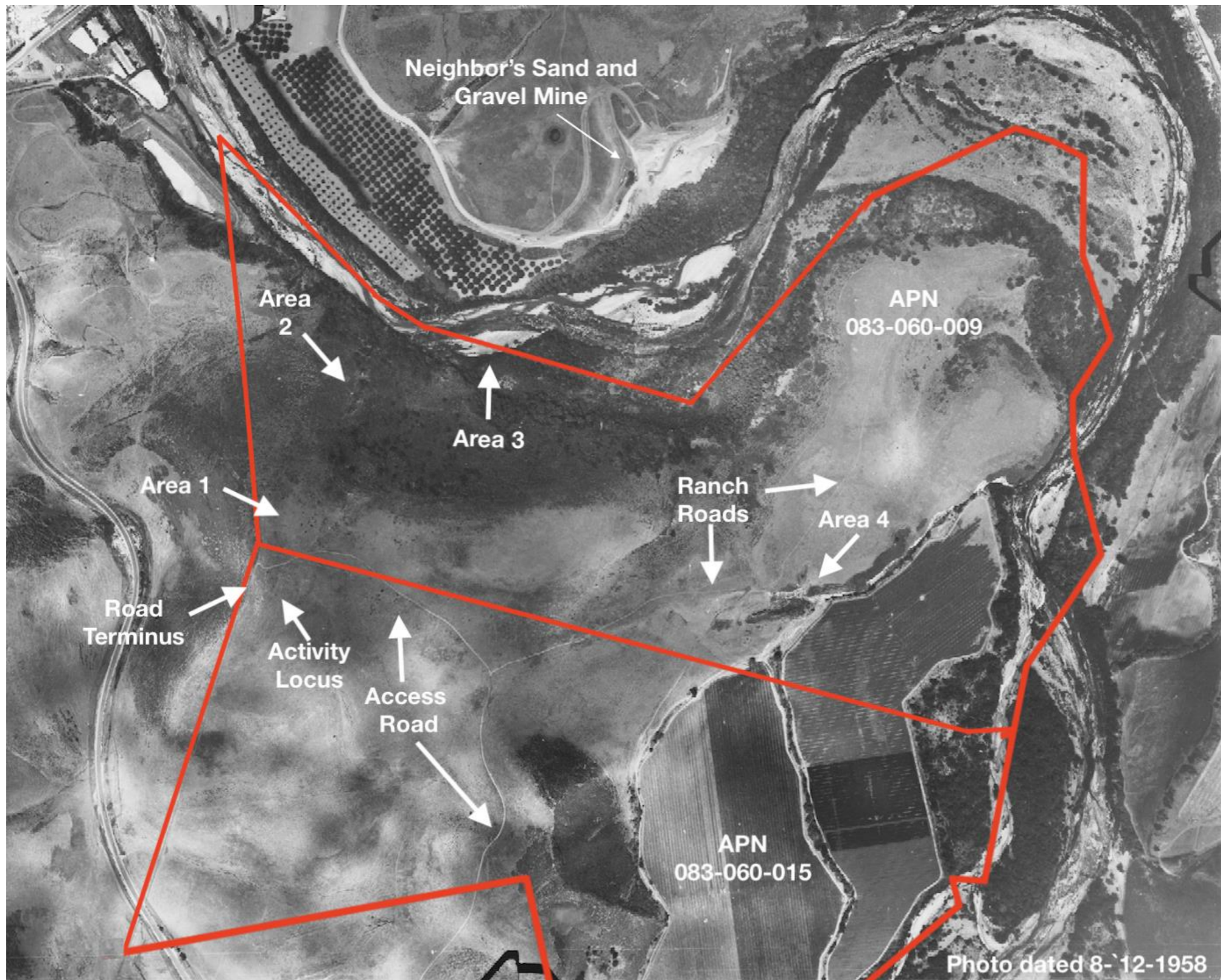


Fig. 2. Aerial photo dated 8-12-1958

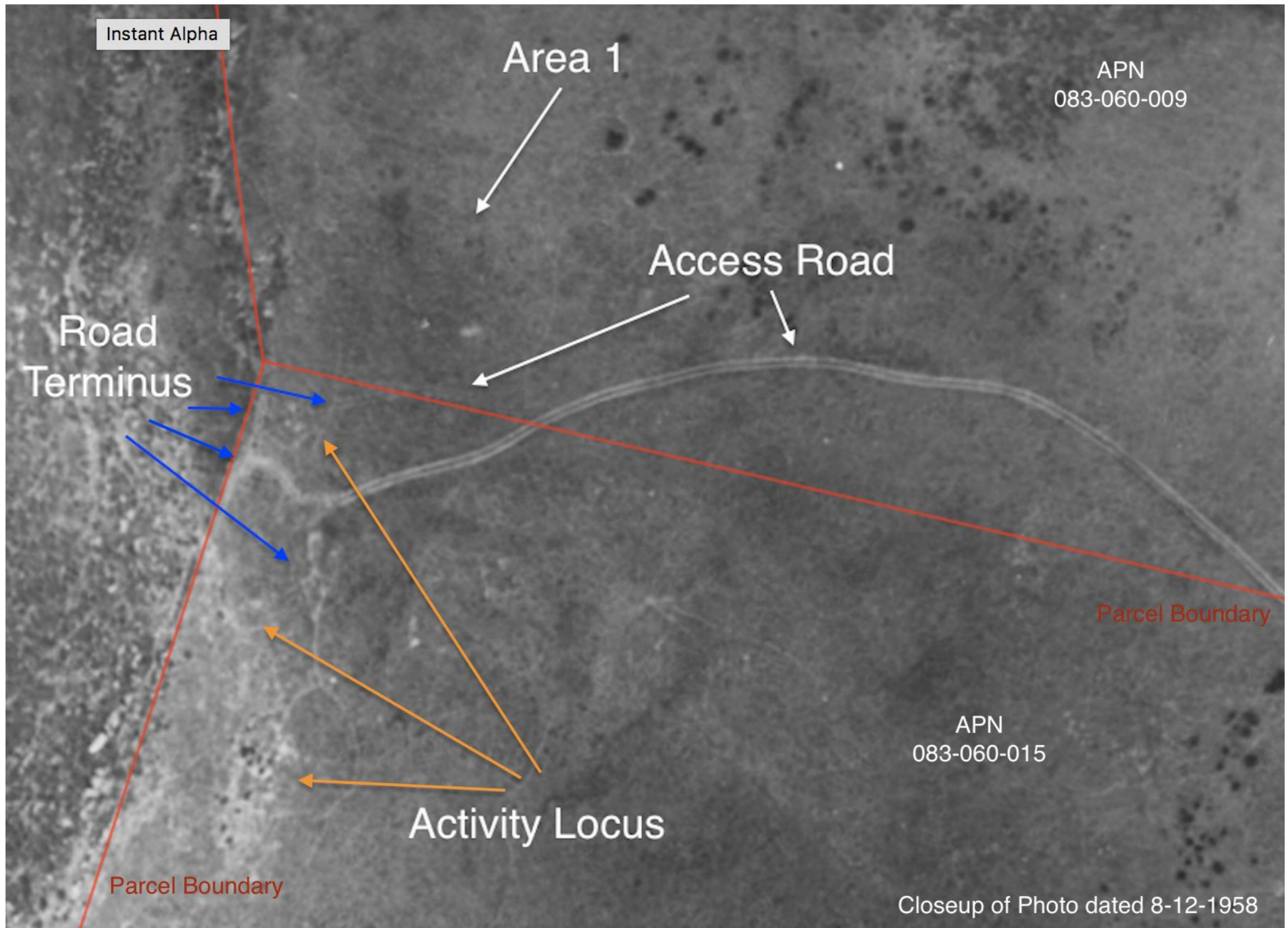


Fig. 3. Closeup of 1958 photo, Area 1

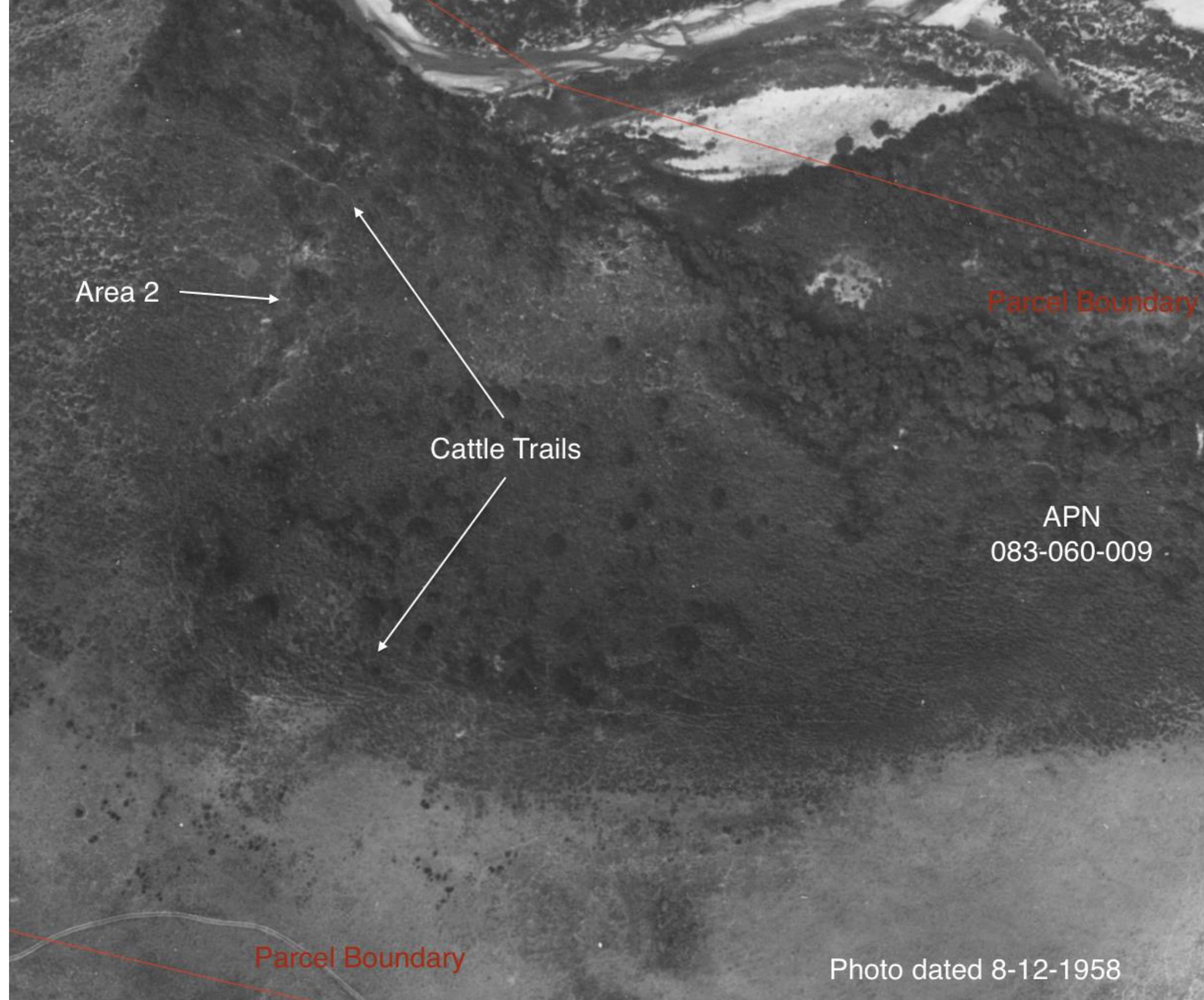


Fig. 4. Closeup of 1958 photo, Area 2

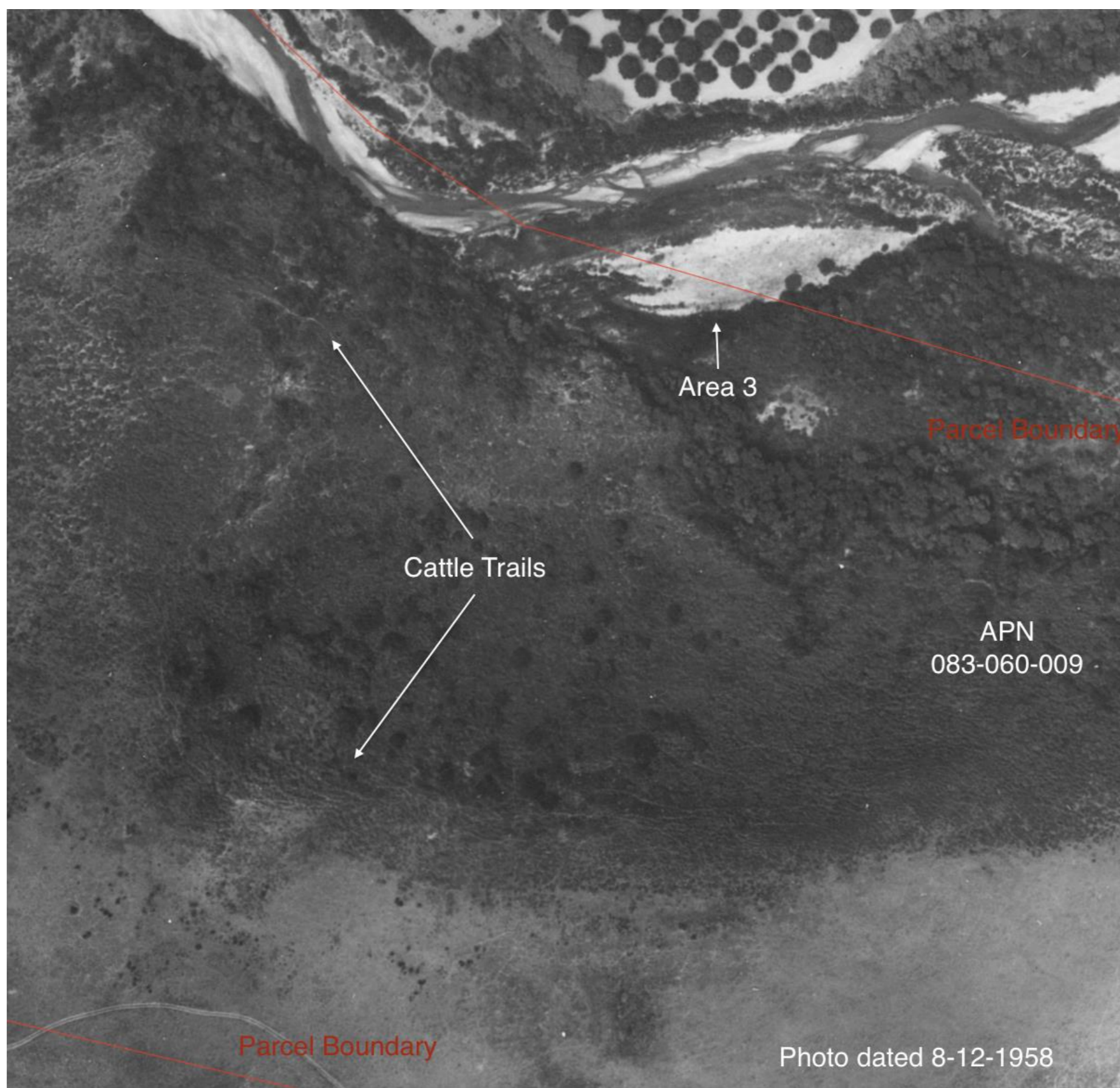


Fig. 5. Closeup of 1958 photo, Area 3



Fig. 6. Closeup of 1958 photo, Area 4.



Fig. 7. Aerial photo dated 6-24-1961

Conclusion of Historic Investigation

- No objective, tangible evidence of quarrying outside of -015 prior to the effective date of County Ordinance 971 on September 29, 1958
- All quarrying activities in other areas occur after this date
- Vested rights for locations outside of the known area on Parcel -015 are not upheld and a CUP must be obtained