

Needle Exchange & Education Program (NEEP)

Board of Supervisors Hearing
September 18, 2007



NEEP Program Overview

- **Needle Exchange & Education Program**

- Prevents the spread of disease
- 1 for 1 needle exchange
- Opportunity to educate and engage in treatment
- Provides access to difficult population



- Reduces exposure to contaminated needles
- Studies indicate a positive impact on disease and does no harm
- Local data is consistent with this research

Needle Exchange Program (NEP) History

- AB 547 and Board approval in August 2006 requires annual status report and public hearing
- 40 NEPs in 18 local jurisdictions in California
 - Alameda, Contra Costa, Humboldt, LA, Marin, Mendocino, Monterey, Yolo, San Diego, San Francisco, SLO, San Mateo, SB, Santa Clara, Santa Cruz, Shasta, Sonoma, Ventura



NEEP History

Direction from Board of Supervisors – Aug 2006

- Explore additional program sites
 - No additional agencies in a position to offer and fund this service
- Acquire data on program and outcomes
 - Developed client survey and customized database
 - Ongoing surveillance of local HIV/AIDS data
- Seek input from CLEC
 - Met with CLEC in July 2007



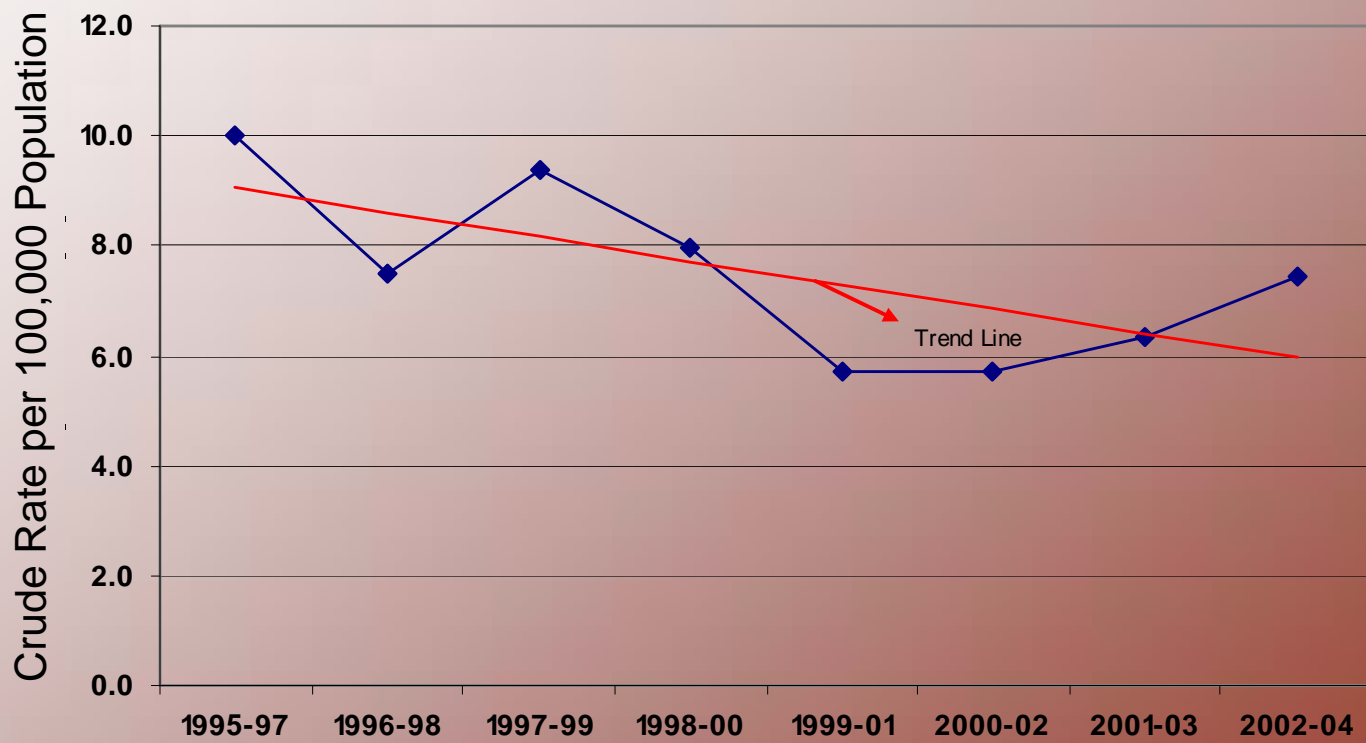
Needle Exchange Client Survey Data

- 6 month period (Jan – June 2007)
 - 33,448 contaminated needles collected
 - 30,443 clean needles distributed
 - Average needles:
 - Collected = 50
 - Distributed = 48
 - 629 client visits
 - 60% of client visits in SB; 40% in SM
 - 79 repeat clients



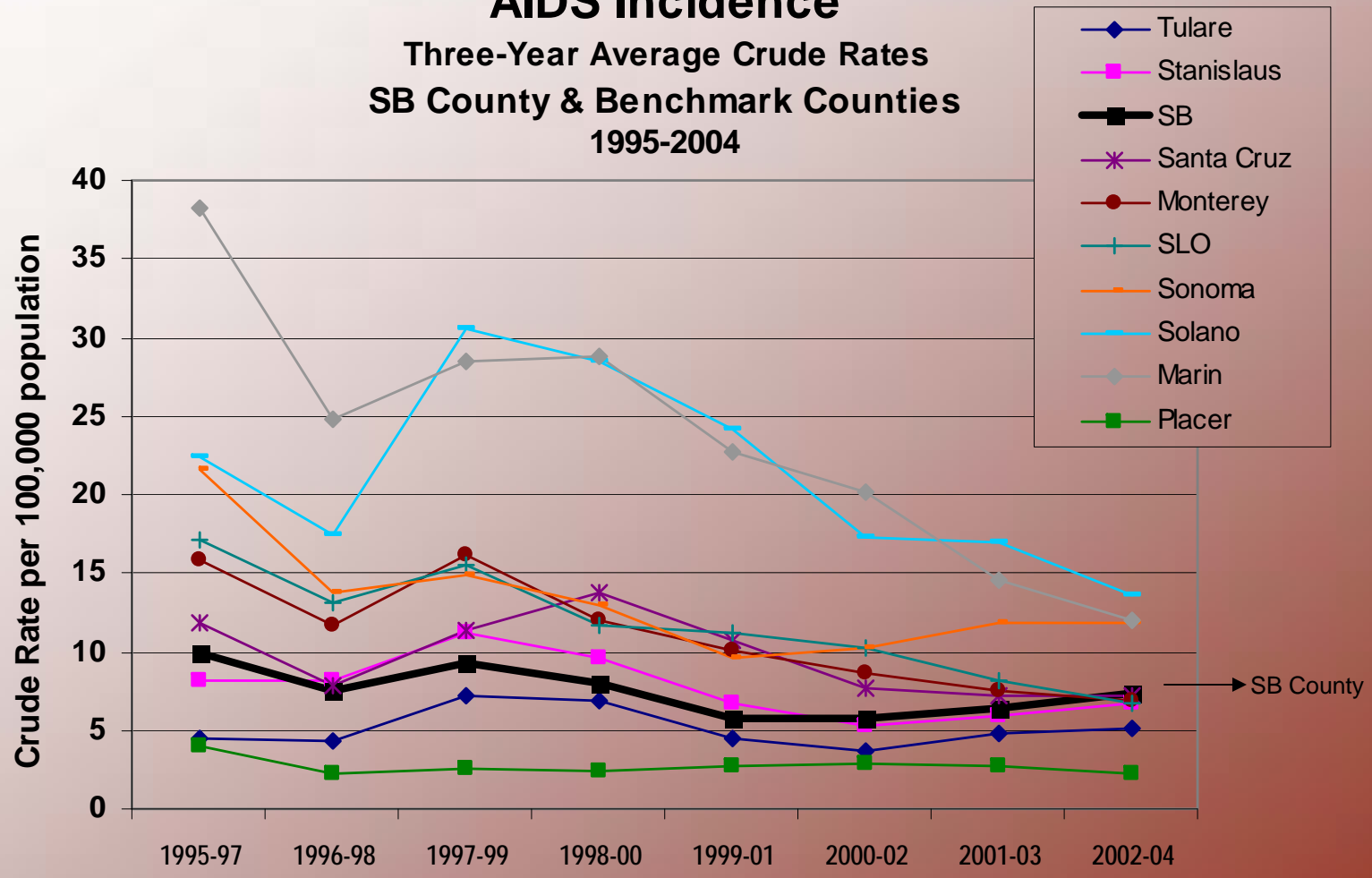
SB County AIDS Data

Santa Barbara County AIDS Incidence
Three-Year Average Crude Rates
1995-2004



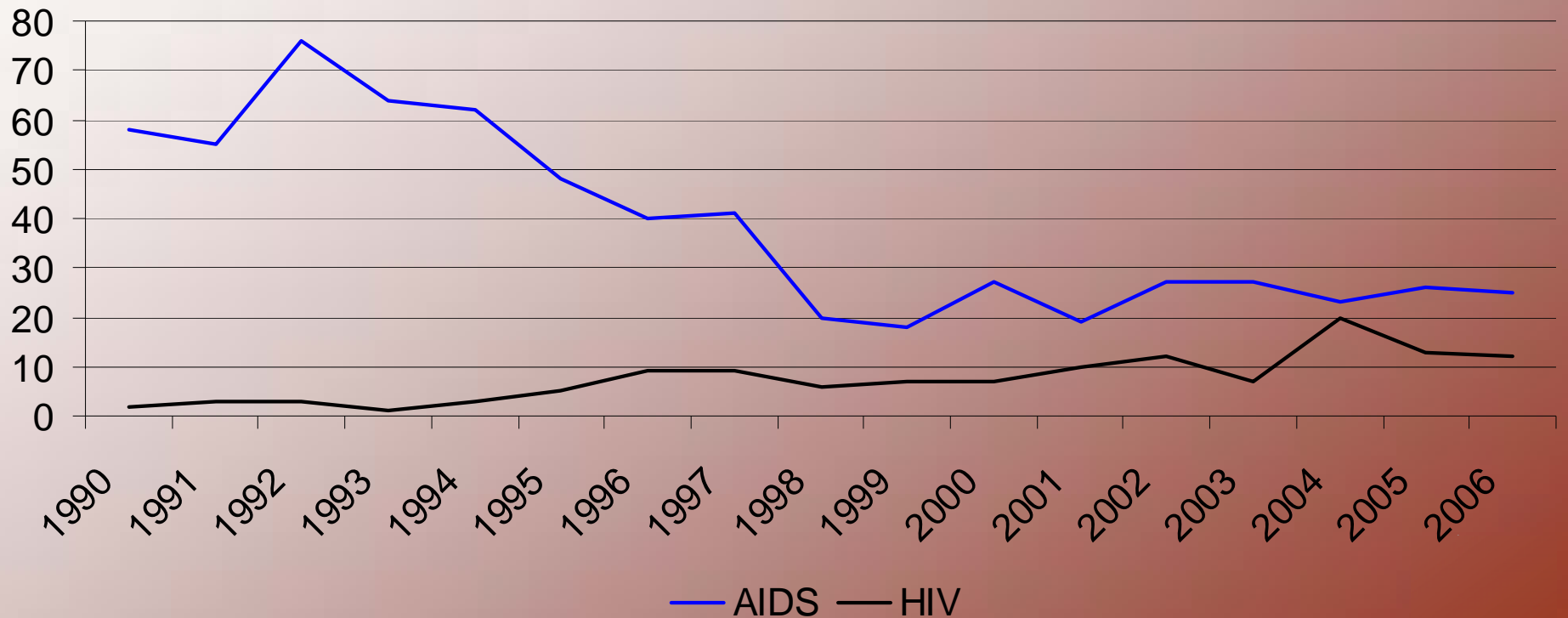
Comparison Data

AIDS Incidence
 Three-Year Average Crude Rates
 SB County & Benchmark Counties
 1995-2004



AIDS and HIV Cases

Reported AIDS and HIV New Cases in Santa Barbara County
by Year of Diagnosis



Reduced IVDU transmission

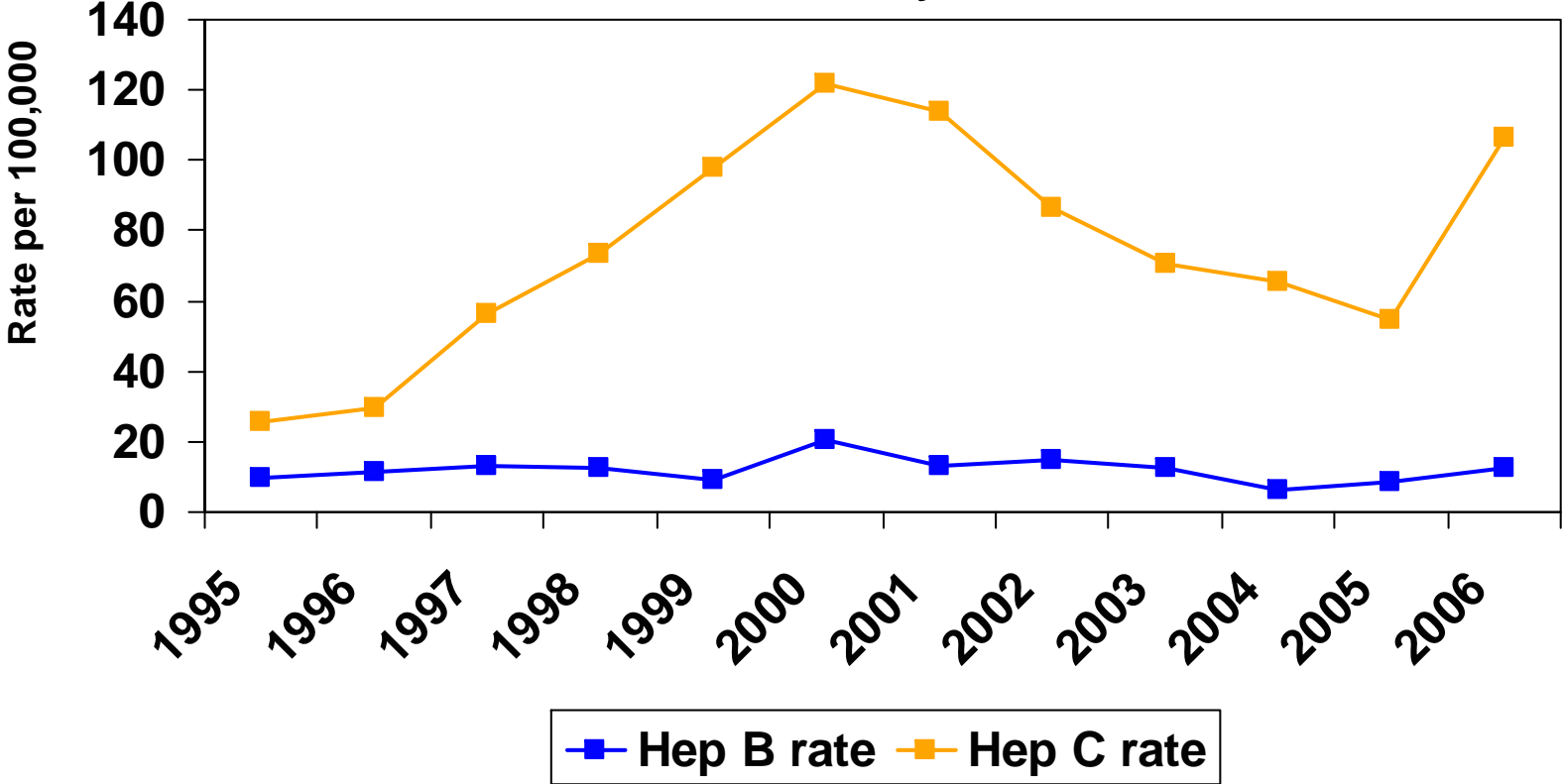
- Overall, intravenous drug use (IVDU) was the mode of transmission for 16% of HIV positive clients overall since 1990
- Since the inception of the NEEP, IVDU was the mode of transmission for 11% of HIV positive clients



Hepatitis Rates

Hepatitis B and Hepatitis C Rates

Santa Barbara County 1995-2006

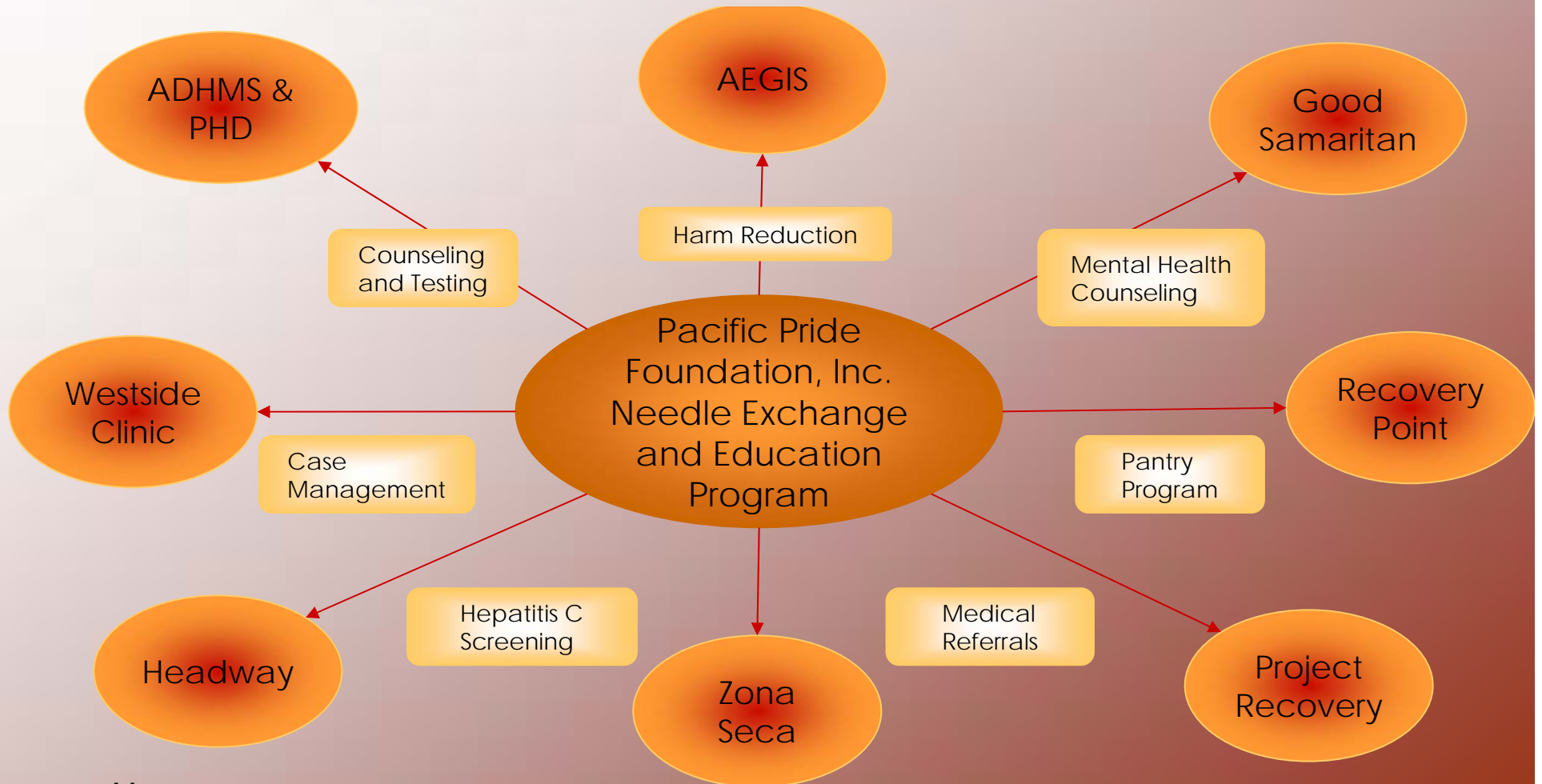


Source: Confidential Morbidity Reports; HARS; State of California, Department of Finance



NEEP Referrals

NEEP provides ongoing opportunities
to link clients to needed services



Why NEEP?

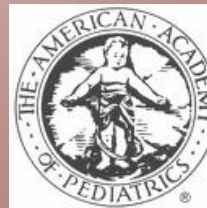
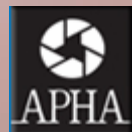
- Strong Evidence
 - Prevents blood borne illness
 - Reduces public exposure to contaminated needles
 - No local increase in criminal or drug activities
- Cost Effective
- Community-Based Access to Services
 - Vital link to drug treatment and health services



Why NEEP (cont.)

Broad Scientific Support

- The American Medical Assn.
- The American Society of Addiction Medicine
- The American Public Health Association
- The Centers for Disease Control and Prevention
- The American Bar Association
- The United States Conference of Mayors
- The National Academy of Science
- The National Research Council
- The National Commission on AIDS
- The National Institute of Health Consensus Statement
- The American Academy of Pediatrics



Next Steps



Annual Hearing Fall
2008

Receive Staff
Report

