

Katherine Douglas

Public Comment

3



From: Christine Burke Adams (via Google Docs) <caburke123@gmail.com>
Sent: Monday, February 10, 2025 10:32 AM
To: sbcob
Subject: February 11, 2025 SBCBOS Meeting-Agenda File #25-00089
Attachments: Revised Light Pollution Letter.pdf

Caution: This email originated from a source outside of the County of Santa Barbara. Do not click links or open attachments unless you verify the sender and know the content is safe.

Christine Burke Adams attached a document

Christine Burke Adams (caburke123@gmail.com) has attached the following document: [Learn more](#)

Attached please find my letter to the BOS for distribution.

Thank you,

Christine Adams

Revised Light Pollution Letter

Use is subject to the Google [Privacy Policy](#).

Google LLC, 1600 Amphitheatre Parkway, Mountain View, CA 94043, USA
You have received this email because caburke123@gmail.com shared a document with you from Google Docs. [Delete visitor session](#)

Google
Workspace

Christine Adams
137 Main Street
Los Alamos, CA 93440
caburke123@gmail.com

February 10, 2025

Santa Barbara County Board of Supervisors
105 Anapamu Street
Santa Barbara, CA 93120

Subject: Request for Resolution on Invasive Highway Lights on Main Street in Los Alamos
(Agenda Item #25-00089)

Dear Members of the Santa Barbara County Board of Supervisors,

I am writing to bring to your attention a significant issue of invasive light pollution caused by four unshielded highway lights that have been placed on a small residential street with only seven houses. This situation has drastically impacted the quality of life for the residents, myself included, and I seek your assistance in addressing this matter.

Despite their apparent intent to ensure safety, the lights are far too intrusive for this quiet residential neighborhood. The level of light pollution they create is extraordinary and has resulted in the following:

1. **Intrusive Light Inside Homes:** The light from these fixtures penetrates directly into homes, even through blackout curtains. Photographs are attached to this letter, showing how the light travels up a staircase into bedrooms and illuminates interior spaces in a manner that is impossible to mitigate with standard residential measures.
2. **Elimination of the Night Sky:** The glare from these lights has wholly obliterated any view of the night sky, depriving residents of basic environmental and aesthetic pleasure.
3. **Violation of Residential Privacy:** The intensity of the light creates a sense of constant exposure and intrusiveness, making it feel as though privacy is no longer possible in our homes.

I understand that recent amendments to the Santa Barbara County Land Use and Development Code (LUDC) include changes aimed at minimizing light pollution while maintaining safety. These updates include:

1. **Outdoor Lighting Standards:**
 - o Lights must be fully shielded and directed downward to minimize impacts.
 - o Illumination must avoid habitat areas, nearby residences, and public roads.
 - o Motion sensors and timers are encouraged to reduce unnecessary light usage.
 - o Maximum allowed lumens and Kelvin values are specified for various zones.

2. **General Regulations:**

- Prohibitions on uplighting and high-intensity lights like searchlights and strobe lights.
- New standards for light placement and shielding near residential and environmentally sensitive areas.

These standards align with the County's stated goal to reduce light trespass and preserve the rural nighttime character. However, the current situation on our street flagrantly violates these principles. Despite multiple inquiries to the County Planning and Development Department, neighbors have not received a clear response as to which specific code these lights are adhering to. This lack of transparency has added to this issue's frustration and confusion.

I urge the Board of Supervisors to take action to address this matter by:

1. **Removing the Highway Lights:** If these lights are deemed unnecessary, I request their removal from this residential street.
2. **Implementing Motion Sensors:** If the lights are required for occasional safety purposes, they should be equipped with motion sensors to limit their usage to when absolutely necessary.
3. **Enforcing Light Pollution Guidelines:** Review and revise the guidelines governing the placement and intensity of such lights to ensure they are compatible with residential settings.

The attached photographs illustrate the extent of the light pollution and its invasive nature. These images depict light bleeding through blackout curtains, illuminating bedrooms, traveling up indoor staircases, and creating a constant glare that is both unnatural and disruptive.

As residents, we ask for your leadership and advocacy to restore the balance between safety and residential livability. It is imperative to address this issue promptly, as it is causing undue stress and discomfort to the families who live here.

Thank you for your time and consideration. I hope to hear back from your office soon with a proposed solution.

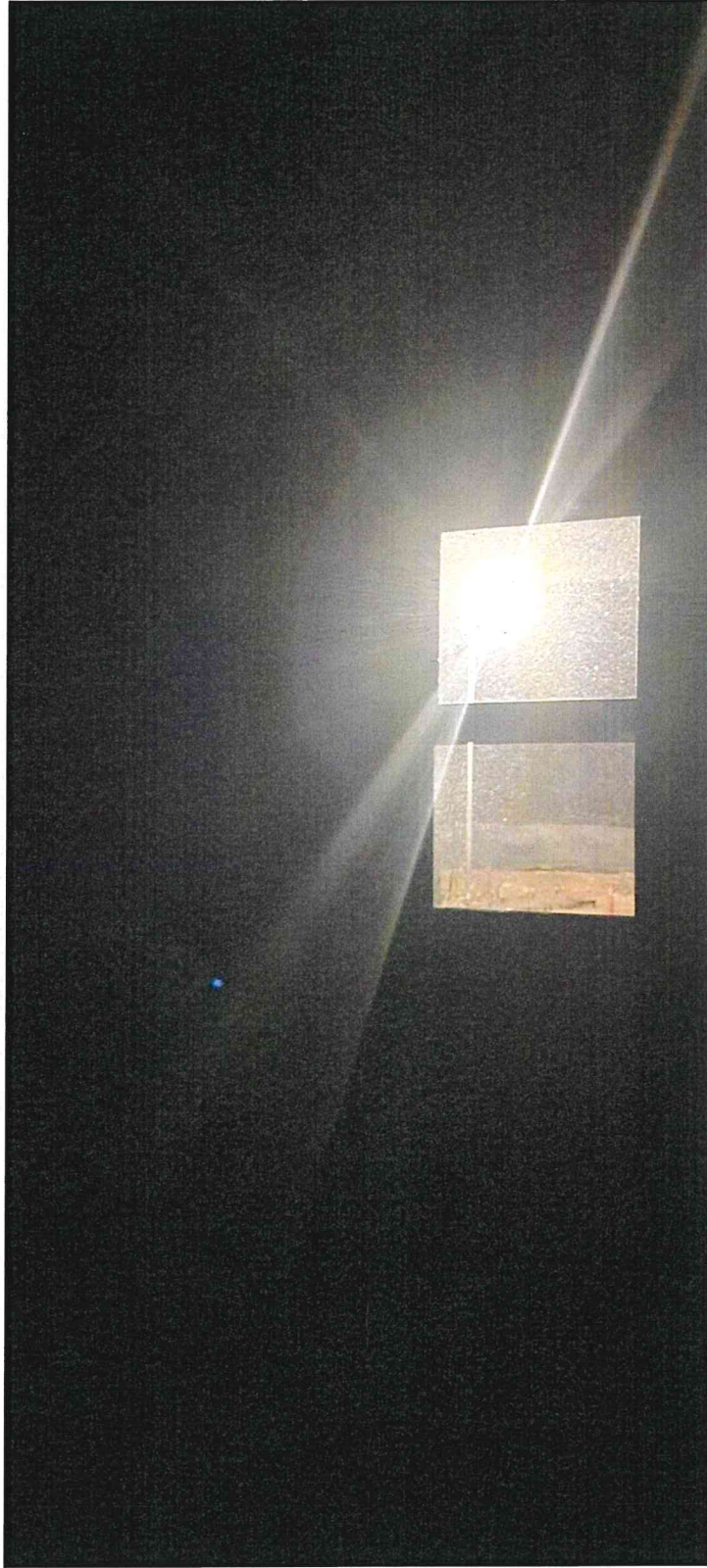
Sincerely,

Christine Adams

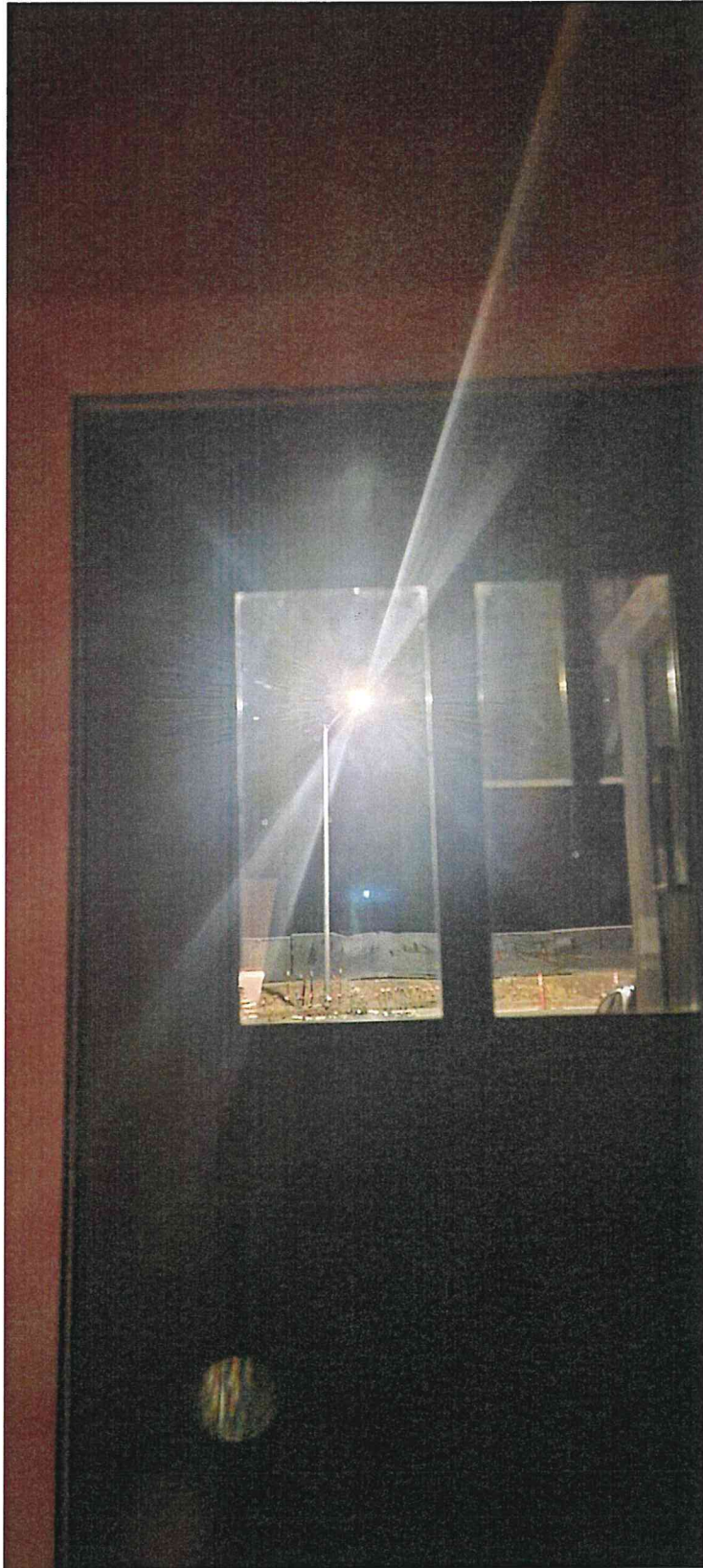
FRONT ROOM



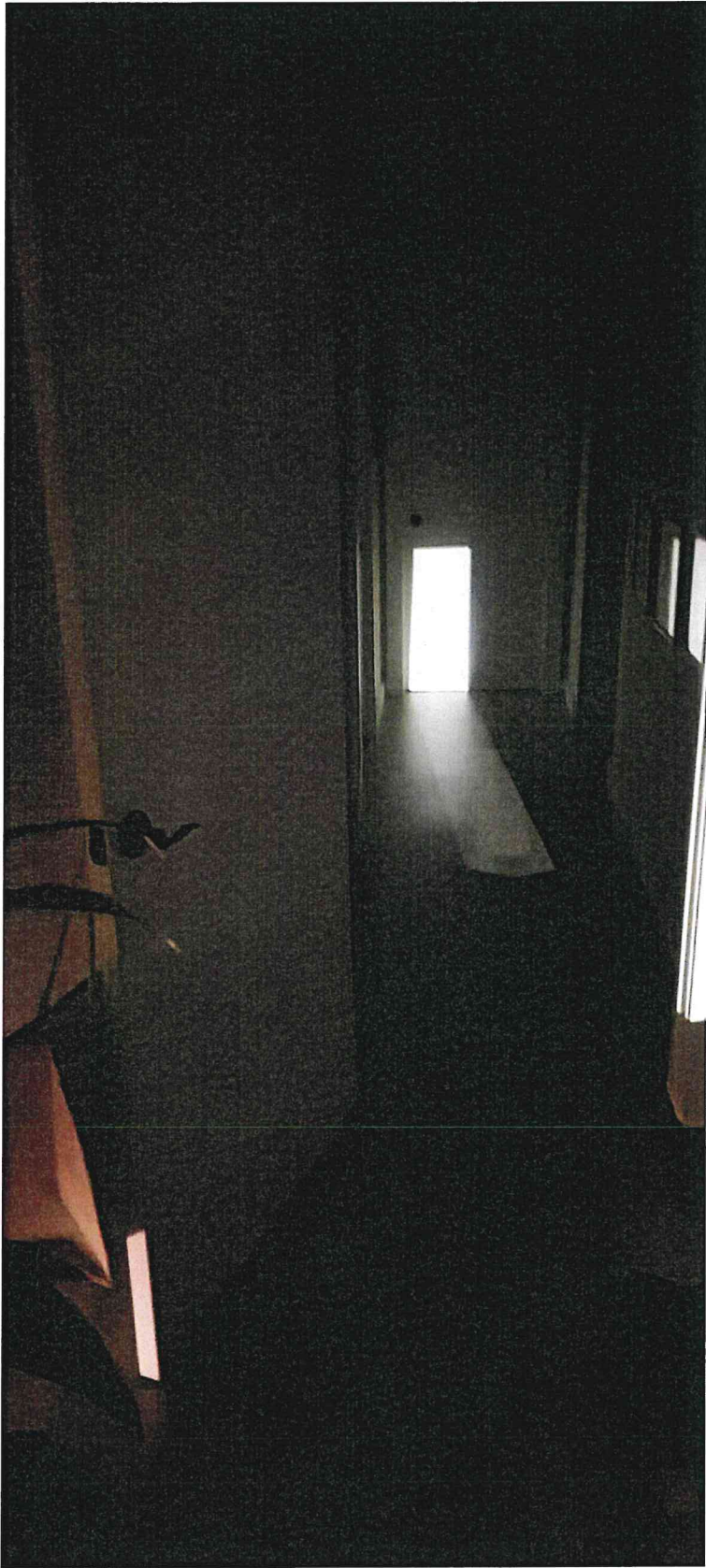
PRIMARY BEDROOM



PRIMARY BEDROOM



HALLWAY FROM PRIMARY BEDROOM TO GUEST BEDROOM



LIGHT BLEEDING THROUGH SHEAR AND BLACKOUT CURTAINS

