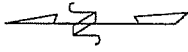


RANCHO FELIZ
 AGRICULTURAL PRESERVE
 OR AGRICULTURE-0008
 REPLACEMENT
 CONTRACT

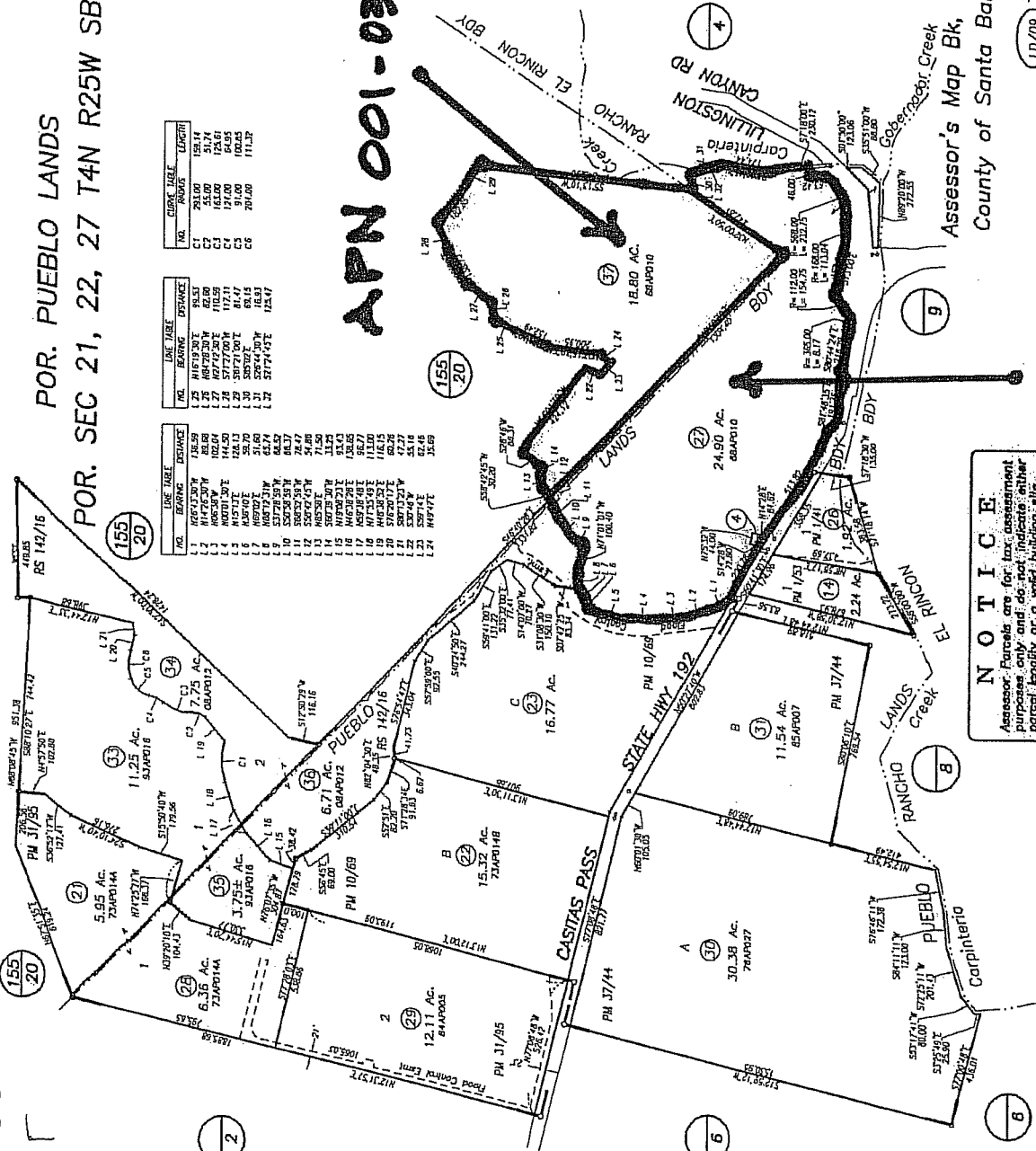
POR. PUEBLO LANDS 001-03
 POR. SEC 21, 22, 27 T4N R25W SBB&M



California Coord. System
 Zone V / NAD 1983

APN 001-030-037
 1" = 400'
 Sale #

NO.	LINE BEARING	DISTANCE	NO.	LINE BEARING	DISTANCE	NO.	CHORD BEARING	CHORD DISTANCE
1	N 65° 13' 30" W	138.53	125	N 16° 18' 30" E	83.51	1	S 13° 10' 00" W	138.53
2	N 14° 15' 30" W	82.69	126	N 86° 28' 30" W	82.69	2	S 13° 10' 00" W	138.53
3	N 11° 15' 30" W	102.81	127	N 77° 12' 30" E	102.81	3	S 13° 10' 00" W	138.53
4	N 60° 30' 30" E	102.81	128	N 77° 12' 30" E	102.81	4	S 13° 10' 00" W	138.53
5	N 65° 13' 30" E	124.13	129	N 35° 31' 30" W	81.47	5	S 13° 10' 00" W	138.53
6	N 85° 03' 30" E	59.70	130	S 89° 30' 00" E	83.15	6	S 13° 10' 00" W	138.53
7	N 85° 03' 30" E	64.40	131	S 89° 30' 00" E	83.15	7	S 13° 10' 00" W	138.53
8	N 85° 03' 30" E	64.40	132	S 89° 30' 00" E	83.15	8	S 13° 10' 00" W	138.53
9	N 85° 03' 30" E	64.40	133	S 89° 30' 00" E	83.15	9	S 13° 10' 00" W	138.53
10	N 85° 03' 30" E	64.40	134	S 89° 30' 00" E	83.15	10	S 13° 10' 00" W	138.53
11	N 85° 03' 30" E	64.40	135	S 89° 30' 00" E	83.15	11	S 13° 10' 00" W	138.53
12	N 85° 03' 30" E	64.40	136	S 89° 30' 00" E	83.15	12	S 13° 10' 00" W	138.53
13	N 85° 03' 30" E	64.40	137	S 89° 30' 00" E	83.15	13	S 13° 10' 00" W	138.53
14	N 85° 03' 30" E	64.40	138	S 89° 30' 00" E	83.15	14	S 13° 10' 00" W	138.53
15	N 85° 03' 30" E	64.40	139	S 89° 30' 00" E	83.15	15	S 13° 10' 00" W	138.53
16	N 85° 03' 30" E	64.40	140	S 89° 30' 00" E	83.15	16	S 13° 10' 00" W	138.53
17	N 85° 03' 30" E	64.40	141	S 89° 30' 00" E	83.15	17	S 13° 10' 00" W	138.53
18	N 85° 03' 30" E	64.40	142	S 89° 30' 00" E	83.15	18	S 13° 10' 00" W	138.53
19	N 85° 03' 30" E	64.40	143	S 89° 30' 00" E	83.15	19	S 13° 10' 00" W	138.53
20	N 85° 03' 30" E	64.40	144	S 89° 30' 00" E	83.15	20	S 13° 10' 00" W	138.53
21	N 85° 03' 30" E	64.40	145	S 89° 30' 00" E	83.15	21	S 13° 10' 00" W	138.53
22	N 85° 03' 30" E	64.40	146	S 89° 30' 00" E	83.15	22	S 13° 10' 00" W	138.53
23	N 85° 03' 30" E	64.40	147	S 89° 30' 00" E	83.15	23	S 13° 10' 00" W	138.53
24	N 85° 03' 30" E	64.40	148	S 89° 30' 00" E	83.15	24	S 13° 10' 00" W	138.53
25	N 85° 03' 30" E	64.40	149	S 89° 30' 00" E	83.15	25	S 13° 10' 00" W	138.53
26	N 85° 03' 30" E	64.40	150	S 89° 30' 00" E	83.15	26	S 13° 10' 00" W	138.53



NOTICE
 Assessor's Parcels are for tax assessment purposes only and do not indicate either parcel legality or a valid building plan.

Assessor's Map Bk, 001-Pg, 03
 County of Santa Barbara, Calif.

LD/09

APN 001-030-027