

Santa Barbara County Child Welfare Services



2019 ANNUAL UPDATE



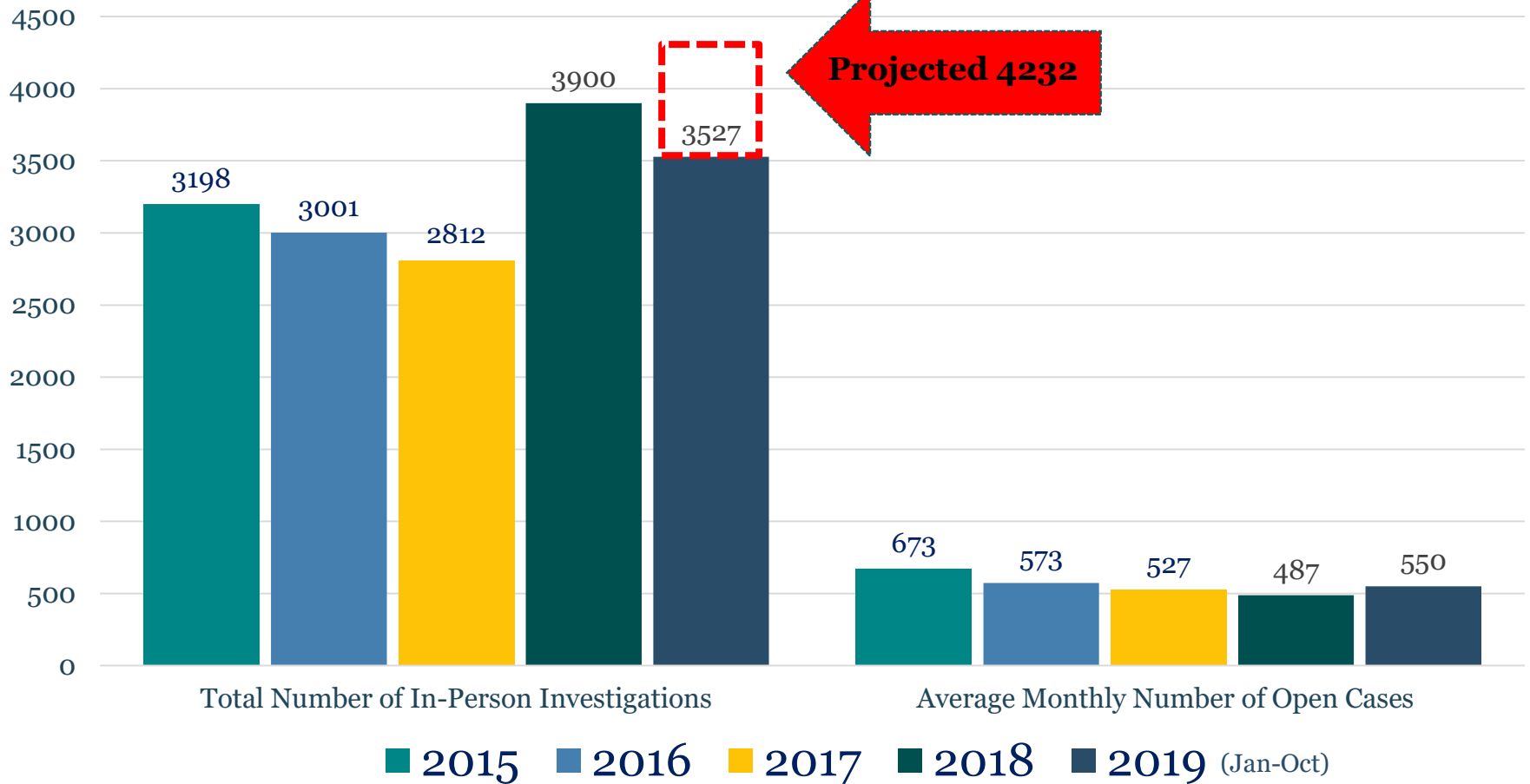
Overview of Today's Presentation

2

- CWS Statistics Snapshot
- CWS System Improvement Plan
- Commercially Sexually Exploited Children Program
- Continuum of Care Reform
- Prevention Efforts

CWS Statistical Snapshot

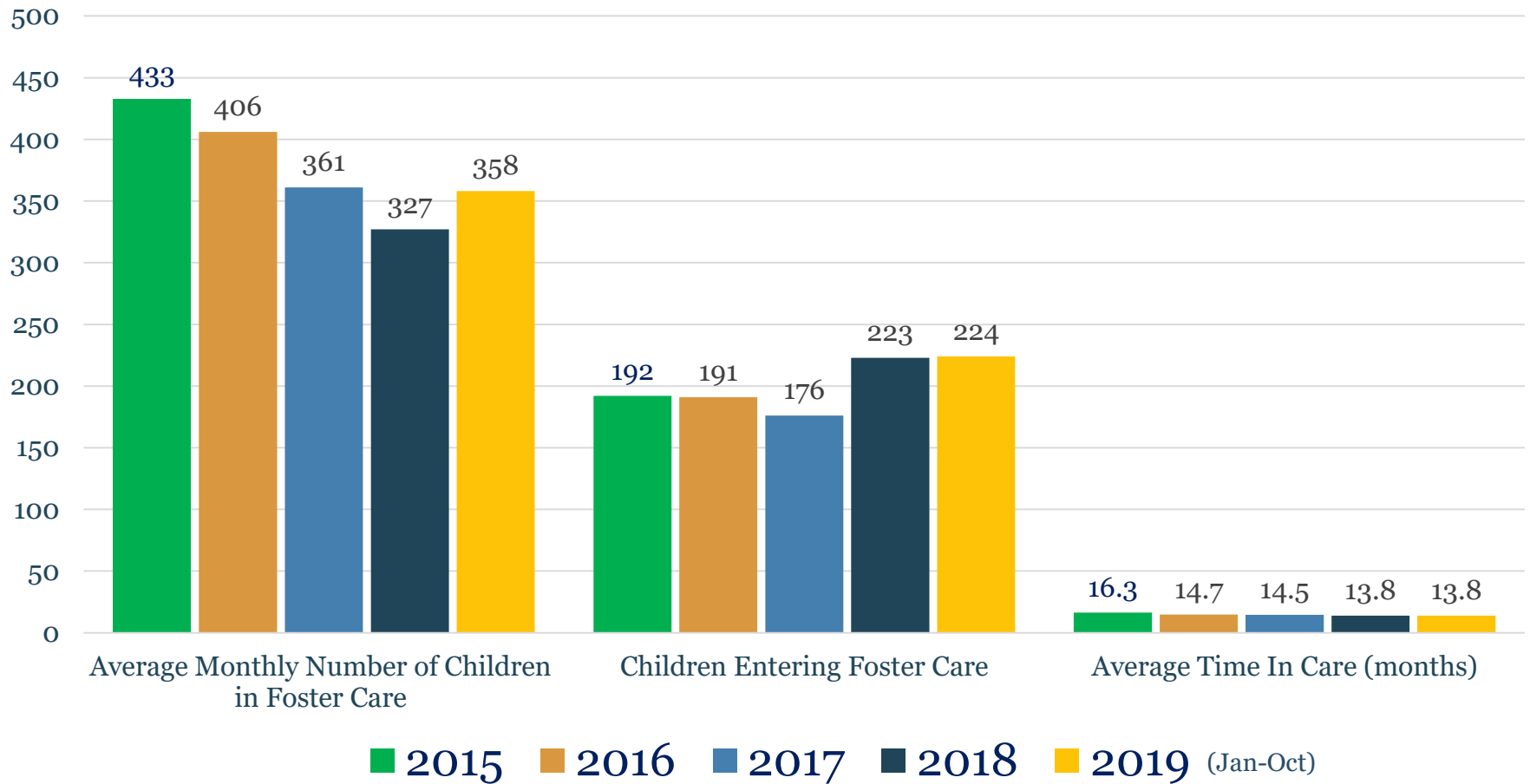
3



Data Source: CWS/CMS 2019 Quarter 2 Extract/Santa Barbara County CWS Report Card

CWS Statistical Snapshot

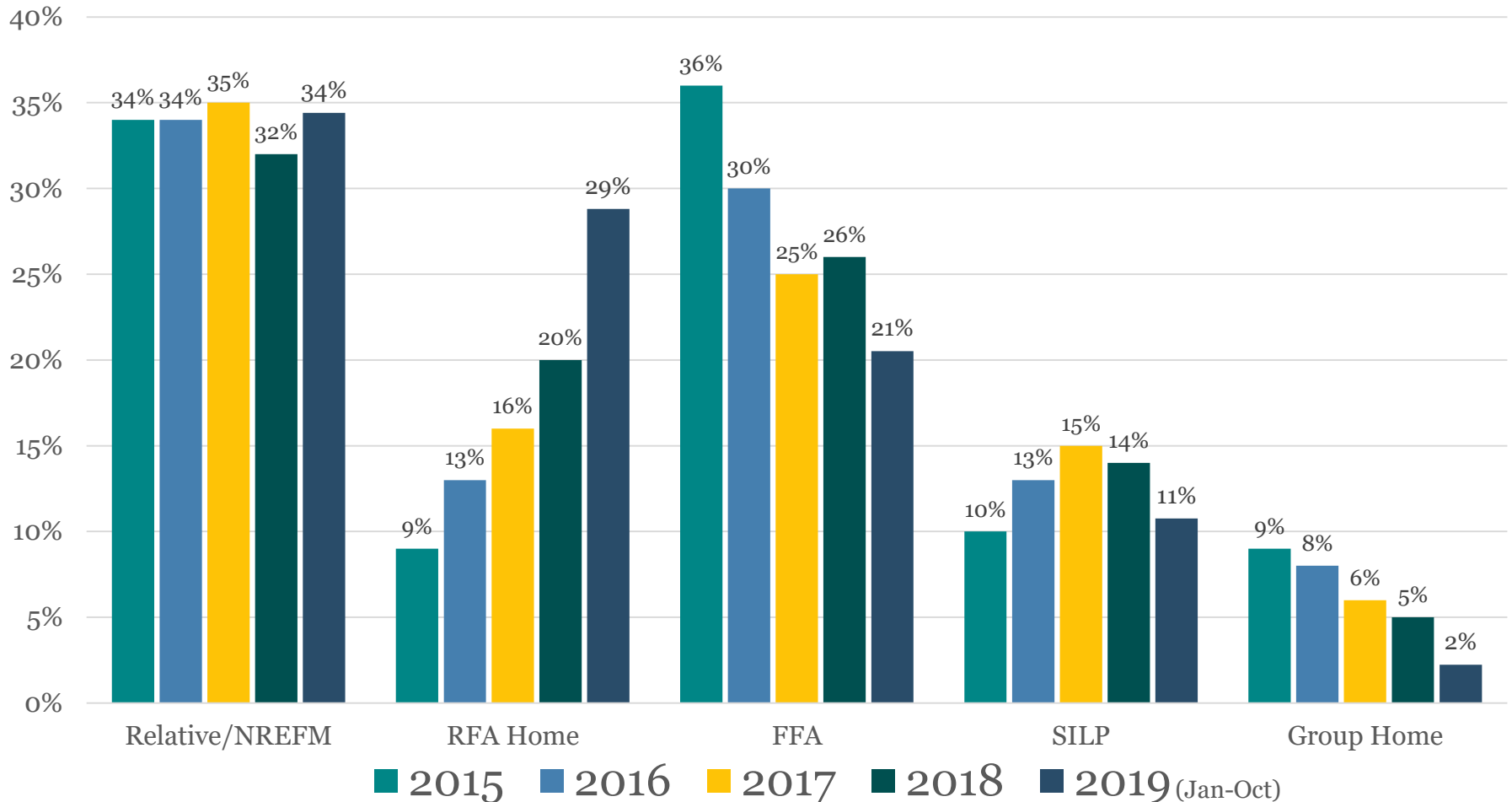
4



Data Source: CWS/CMS 2019 Quarter 2 Extract/Santa Barbara County CWS Report Card

Placement Type

Children and Youth Ages 0-21

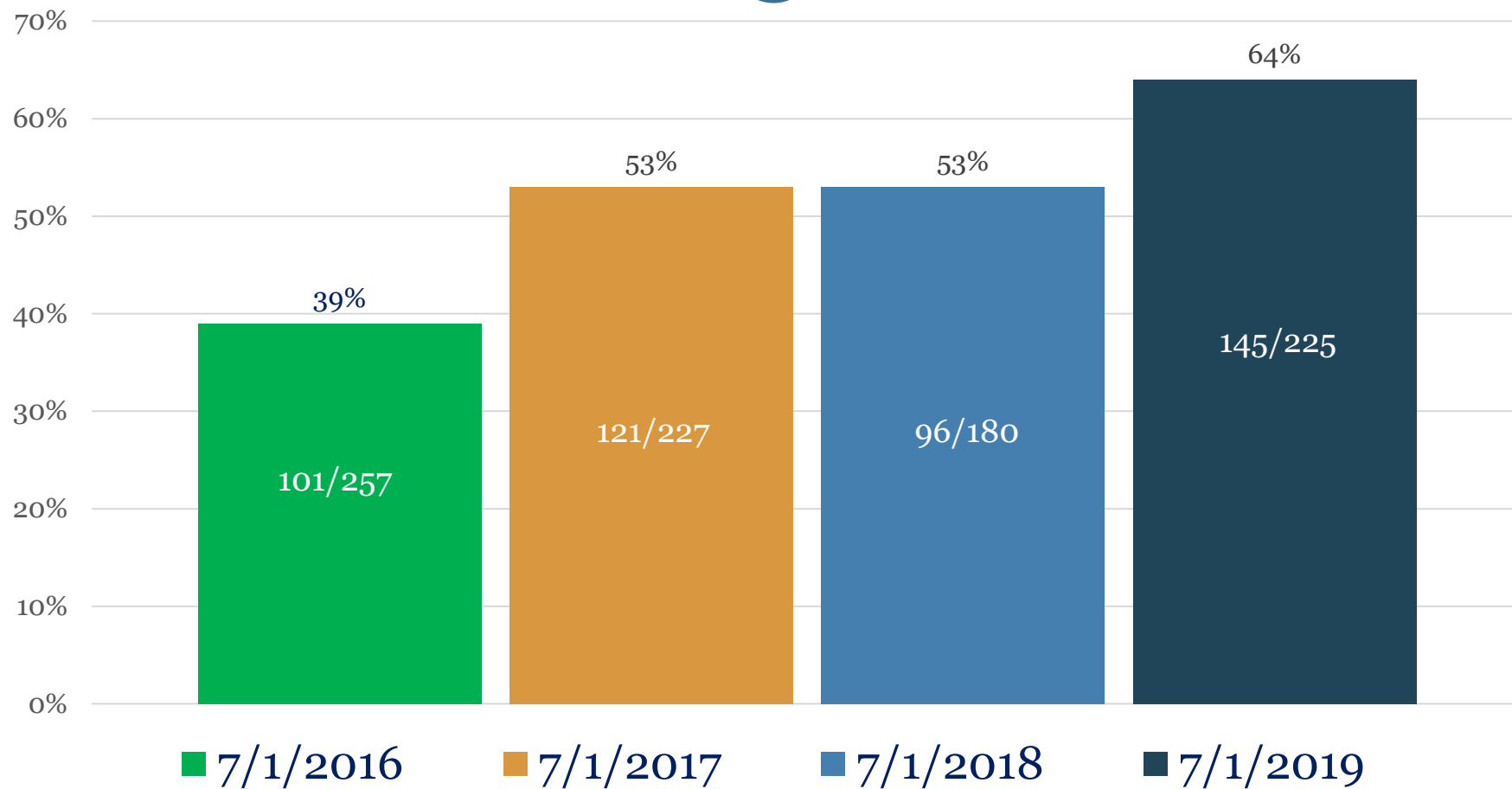


Monthly Averages

Data Source: CWS/CMS 2019 Quarter 2 Extract/Santa Barbara County CWS Report Card

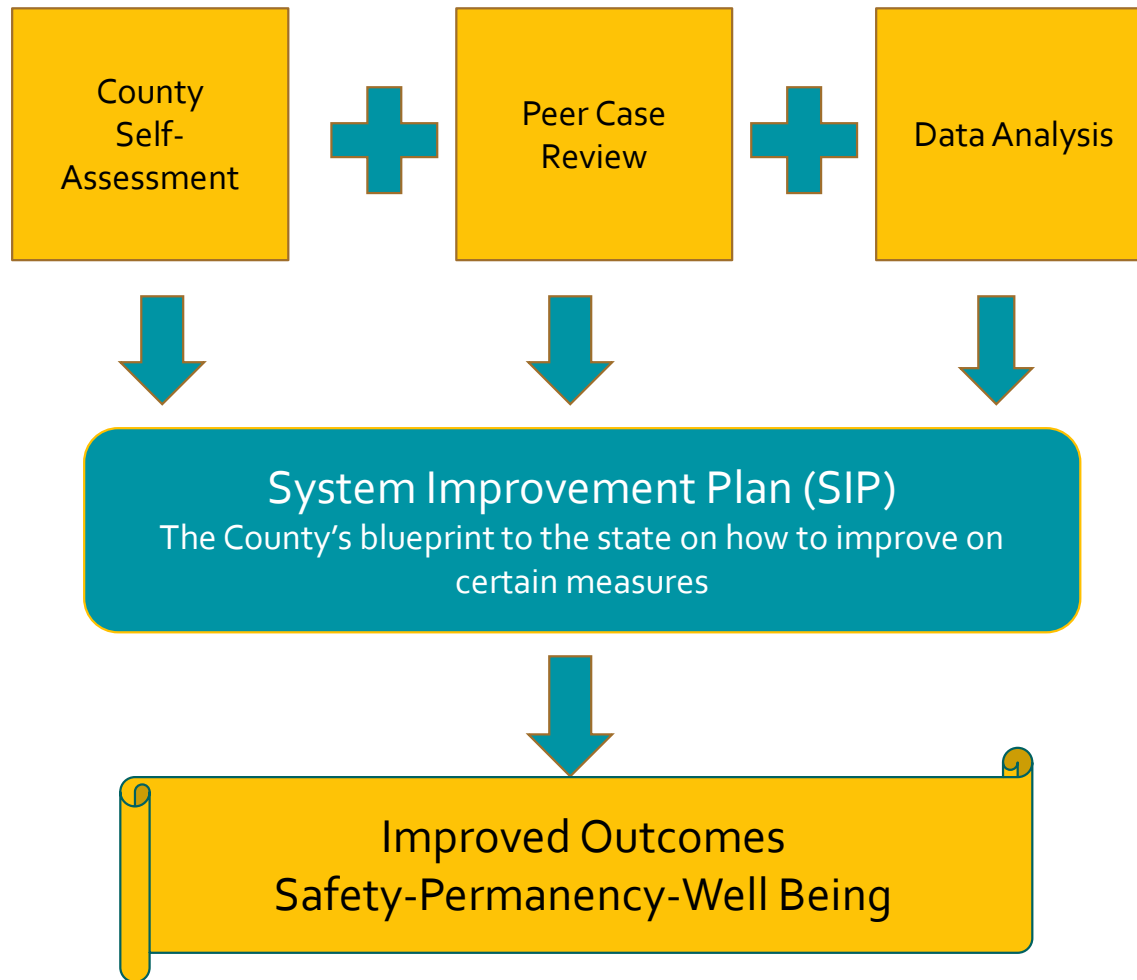
Children Placed With All Siblings

6



Data Source: CWS/CMS 2019 Quarter 2 Extract

California – Child and Family Services Review (CFSR)



CFSR and SIP Timeline

8

- ✓ 2017-2022 System Improvement Plan (SIP) Completed
- ✓ Second SIP Progress Report Approved by CDSS on November 19, 2019

CFSR Measures

Measure	Federal Standard	Santa Barbara County Performance	Performance related to Standard
3-S1 Maltreatment in Foster Care (rate)	≤ 8.5 of all children in care are victimized during the 12-month period (rate)	7.13%	119.2%
3-S2 Recurrence of Maltreatment	≤ 9.1% of all children with a substantiated allegation will have another substantiated allegation within 12 months	6.7%	136.8%
3-P1 Permanency in 12 months (entering foster care)	≥ 40.5% of children are discharged to permanency within 12 months	35.4%	87.5%
3-P2 Permanency in 12 months (in care 12-23 months)	≥ 43.6% of children are discharged to permanency within 12 months	65.3%	149.8%
3-P3 Permanency in 12 months (in care 24+ months)	≥ 30.3% of children are discharged to permanency within 12 months	32.9%	109%
3-P4 Re-entry to foster care within 12 months	≤ 8.3% of all children who discharged to reunification or guardianship re-enter foster care	8.1%	102.9%
3-P5 Placement Stability (rate)	≤ 4.12 placement moves per day for all children in foster care	3.96%	104%
Measure	State Standard	Santa Barbara County Performance	Performance related to Standard
2B - Timely Investigation Immediate Response	≥ 90% of child abuse and neglect referrals receive an in-person investigation within required response timeframe	100%	111.1%
2B - Timely Investigation 10 day Response	≥ 90% of child abuse and neglect referrals receive an in-person investigation within required response timeframe	98.7%	109.6%
2F - Timely Social Worker Visits Children in Placement	≥ 95% of children in placement are visited by caseworkers	99.0%	104.2%

Areas of SIP Focus

10

CWS selected the following 3 measures based on information learned during the County Self-Assessment (CSA), Peer Review, and in alignment with the state's Program Improvement Plan (PIP):

1. Permanency in 12 months
2. Placement Stability
3. Systemic Factor - Workforce Wellness

SIP Strategies

11

SIP Strategies focus on the following areas:

- Increased engagement of children, youth, and families in case planning and decision making
- Enhanced practices that result in more children/youth having permanent homes and stable placements and connections
- Improved caregiver support strategies
- Increased access to services for children, youth and families
- Developing a trauma informed workplace that ensures a healthy and competent workforce

Permanency in 12 months

12

3-P1 Permanency in 12 months (entering foster care)

Of all children who enter foster care in the 12 month period, what percent were discharged to permanency within 12 months?

- Permanency = Reunification, Adoption, Guardianship
- Federal standard= 40.5%
- Baseline Performance= 32.8% or 81% of standard (Quarter 1 2017)
- Recent Performance= 35.4% or 88% of standard (Quarter 4 2018)

Permanency in 12 months
Second year Progress Report Highlights

13

- Visitation Practice Improvements
- Intensive Family Services Program (IFSP)
- Continued Use of CFTs

Permanency in 12 months

Second year Progress Report Highlights

14

Family Unification Program (FUP) Housing Vouchers

- Provides vouchers to CWS involved families and former foster youth at risk of/or currently homeless
- Santa Barbara City Housing Authority - 125 existing vouchers
- Santa Barbara County Housing Authority - 74 new vouchers awarded January 2019
- Over 125 eligible families and youth have been referred
- 72 families and youth have found housing

Placement Stability

15

3-P5 Placement Stability

Of all children who enter foster care in a 12 month period, what is the rate of placement moves per day of foster care?

- Federal standard= 4.12
- Baseline Performance= 4.54 or 90.7.% of standard (Quarter 1 2017)
- Recent Performance= 3.96 or 104% of standard (Quarter 4 2018)

Placement Stability

Second Year Progress Report Highlights

16

- Villages Program
- Child Care Bridge
- Respite Care Reimbursement
- Family Finding Social Worker
- Resource Family Support Specialist

Workforce Wellness

17

A healthy and stable workforce contributes to higher job satisfaction, reduced staff turnover, and improved outcomes for children and families

- **Strategy #1: Address Secondary Traumatic Stress**
- **Strategy #2: Staff Recruitment and Retention**

Workforce Wellness – Evaluation Methods

18

- Administer the California Social Work Education Center Workforce Study annually to gauge progress
- Track retention rates of social workers and supervisors
- Solicit ongoing feedback from staff on their well-being

Workforce Wellness

Second Year Progress Report Highlights

19

- Workforce Study Re-Administered by California Social Work Education Center at UC Berkeley
- Workforce Wellness Team
- ACTs Project
- RAFT Sessions



RAFT

Restore And Flourish Together

SESSIONS

- Understand the effects of secondary trauma
- Learn to manage response to difficult situation
- Gain awareness of personal vulnerabilities
- Build resiliency skills
- Increase ability to effectively engage families and improve outcomes for families

CHILD WELFARE **CAN** ADDRESS

BURNOUT

Did you know?

The **World Health Organization (WHO)** classifies burnout¹ as a

SYNDROME



Child welfare workers experience burnout at a **higher rate** than other helping professions.

What predicts burnout?



- Caseload size
- Negative organizational climate
- Job stress

EXIT

Workers who experience burnout are **more likely to leave the organization**

Who feels it the most?



64%

Of burnout is WORK-related
- Paperwork
- Bureaucracy
- Inability to affect change



36%

Of burnout is CLIENT-related
- Secondary trauma
- Personal safety threats
- Not enough client engagement

This means that child welfare organizations can make a difference!

To address burnout, child welfare organizations can:

Manage workloads

Set and honor caseload limits

Use teaming approaches



Reduce paperwork

Allow job mobility for a change of role

Build a supportive organizational climate

Encourage peer relationships

Normalize asking for and receiving help



Offer supports for secondary trauma

Use trauma-informed lens to better support workforce and families

Use safety and self-care plans for all staff

Commercial Sexual Exploitation of Children (CSEC)

22

- SB 855 (2014) Clarified Dependency Code to include CSEC as dependents and established the optional CSEC Program.
- SB 794 (2016) Required CWS and Probation to implement protocols to serve CSEC and locate missing youth.
- SB 1322 (2017) amended penal code to prohibit the arrest or prosecution of a child under 18 years of age for crimes related to soliciting or prostitution

CSEC Program Accomplishments

23

- CSEC Steering Committee updated MOU in 2019
- CSEC Coordinator Position
- CSEC Specific Placements – Safe House and Hope Refuge
- CSEC youth shelter care beds
- Provided CSEC 102 training to resource families, CWS staff and community partners
- Solutions for the Future: Fighting Exploitation with Empowerment Conference

Continuum of Care Reform (CCR)

- “Continuum of Care” refers to the spectrum of care settings for youth in foster care, from the least restrictive and service-intensive to the most restrictive and service-intensive.
- Comprehensive framework that supports children, youth and families across placement settings in achieving permanency. Includes the following elements:
 - Increased engagement with children, youth and families
 - Limited use of congregate care
 - Increased capacity for home-based family care

Increased Engagement with Children, Youth and Families

25

- Child and Family Teams
 - Required as of January 1, 2017 for all children who enter the CWS system
- Increased availability of mental health services
 - Requires provision of mental health services to facilitate reunification and meet needs for safety, permanency, and well-being.
 - Implementation of the Child and Adolescent Strengths and Needs (CANS) Assessment Tool began September 2018.
 - Behavioral Wellness clinicians co-located with CWS
 - Level of Care assessment process
 - Phase I Implementation - March 2018
 - Phase II Implementation – January 2020

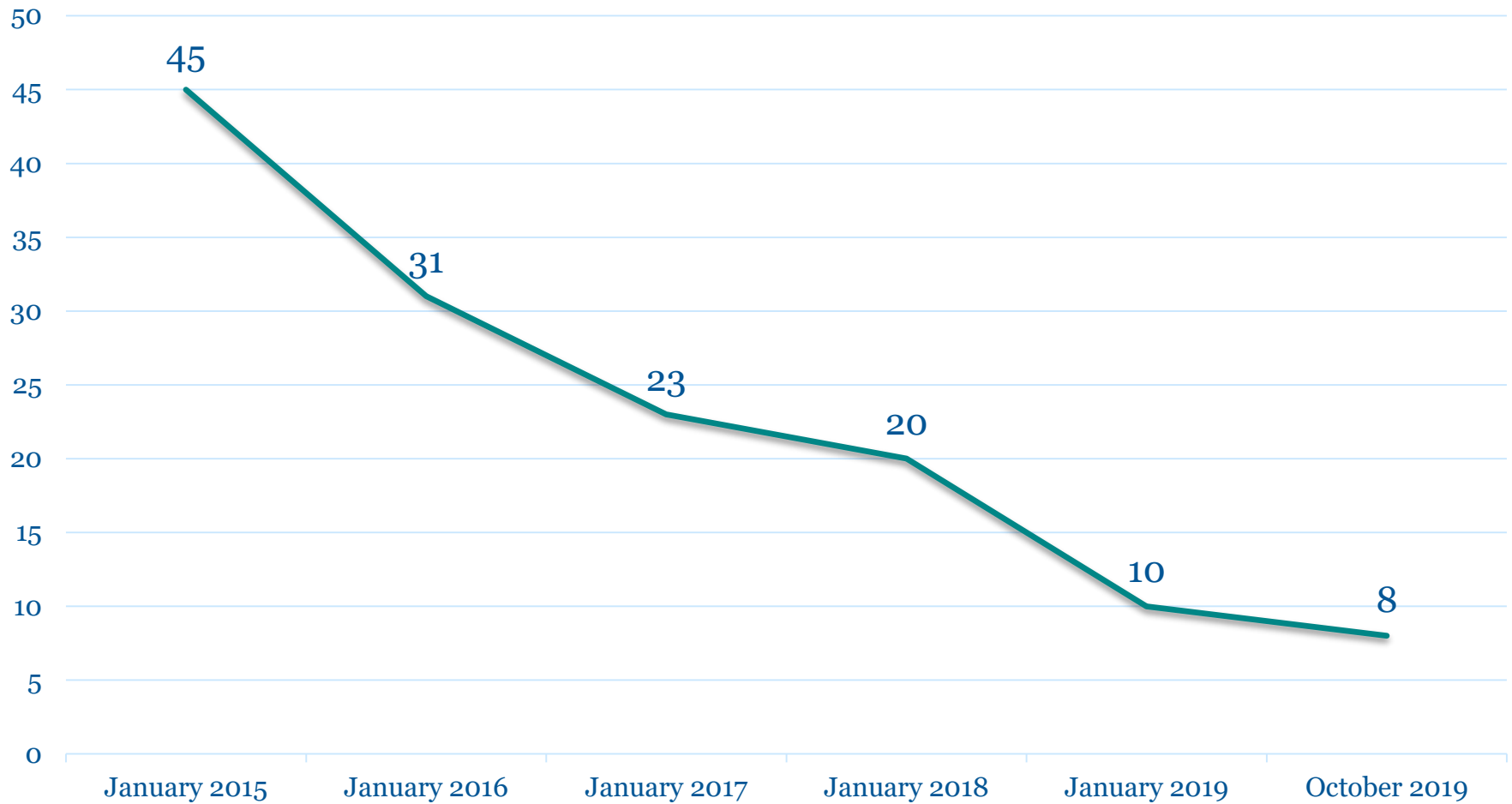
Limited Use of Congregate Care

26

- Shift from Group Homes to “Short-Term Residential Therapeutic Program” (STRTP)
 - One of five Group Homes in our County has successfully converted to STRTP
 - Four have applied for an extension with the state to comply with the new requirements for becoming an STRTP
 - One new STRTP has received provisional approval.

Youth in Group Home Placements

27

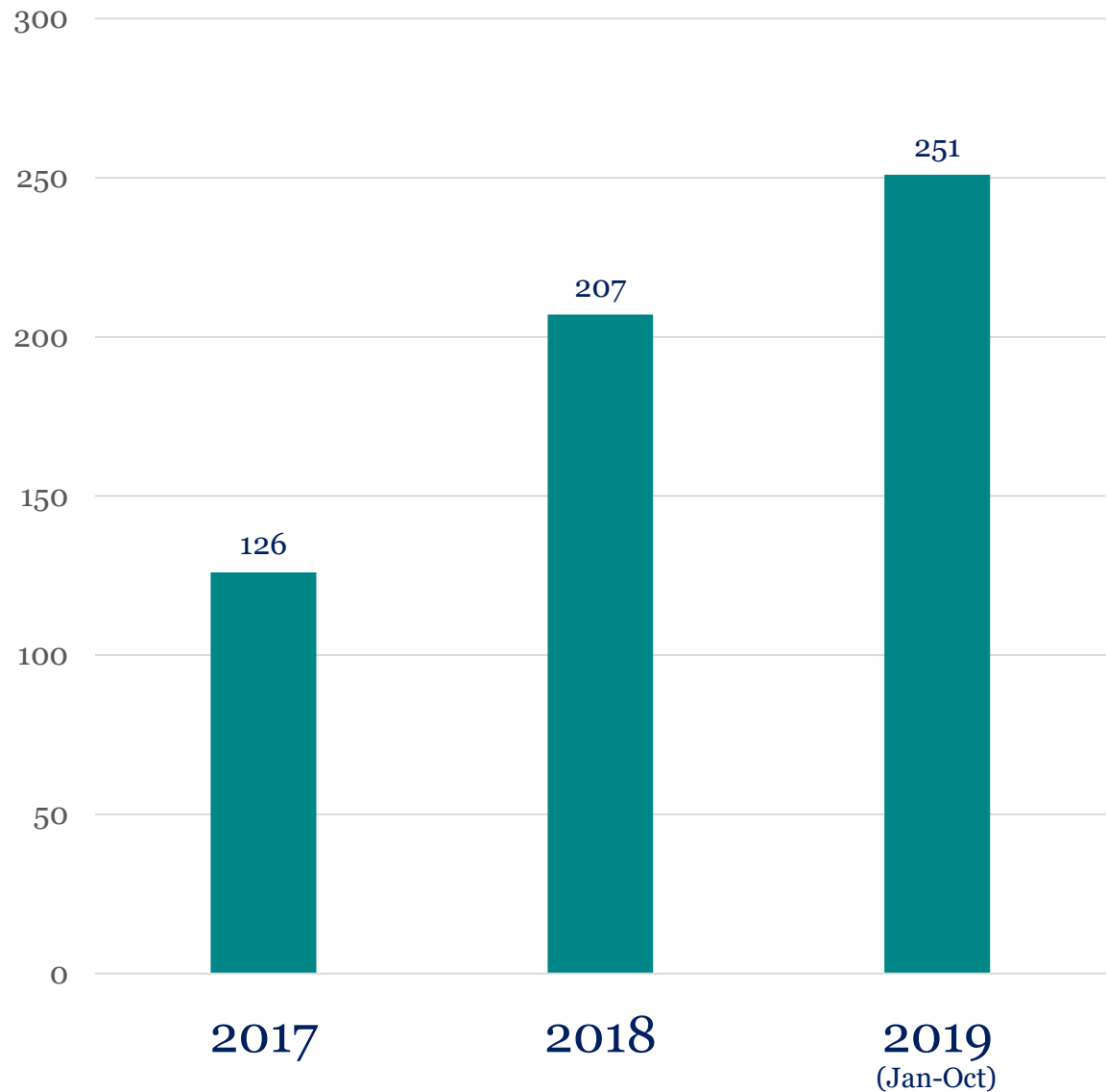


Increased Capacity for Home-Based Family Care

28

- Increased recruitment, retention, and support activities
 - Our County Our Kids recruitment and retention campaign
 - Increased Trauma and Wellness Training
 - Collaboration with Quality Parenting Initiative (QPI) Partners on retention and support programs

Average Number of Approved Resource Family Homes



Family First Prevention Services Act (FFPSA)

30

FFPSA was signed into law as part of the Bipartisan Budget Act of 2018

Enables states to use Federal funds (Title IV-B and E) to provide enhanced support to children and families and **prevent foster care placements through the provision of mental health and substance abuse prevention and treatment services, in-home parent skill-based programs, and kinship navigator services.**

Services may be provided to:

- A child who is a candidate for foster care
- A parent or kin caregiver of the child
- A child in foster care who is a pregnant or parenting foster youth

Family First Prevention Services Act (FFPSA)

31

- Programs must be evidence based and trauma-informed, and include a rigorous evaluation strategy by clearinghouse procedures
- In order to Opt-in states must implement changes to congregate care many of which are in alignment with the goals of CCR.
- States May Opt-in beginning October 1, 2019 and no later than October 1, 2021

County Prevention Team

32

- Selected as one of 22 Counties to Participate in CWS led Prevention Summit by CDSS Office of Child Abuse Prevention.
- Under the umbrella of the KIDS Network, Team includes Child Welfare Services, First 5, Public Health, Behavioral Wellness, Child Abuse Prevention Council, Network of Family Resource Centers, County Education Office, and Community-Based Organizations.

County Prevention Team

33

- Goal is to integrate and strengthen the Santa Barbara County Prevention Network across all levels of the prevention continuum through:
 - Shared learning opportunities
 - Integrated messaging
 - Community-level data analysis

Questions??



THANK YOU



Our County. Our Kids. **NEEDS YOUR HELP**

Provide Local Kids with a loving home today!

We need to find loving families for children and youth in Santa Barbara County. Become a Resource Parent and provide a ready and loving home today!

Contact...

Our County. Our Kids.

www.OurCountyOurKids.org/SBC

866.899.2649

 OurCountyOurKids

