


# **Santa Barbara County Flood Control District**

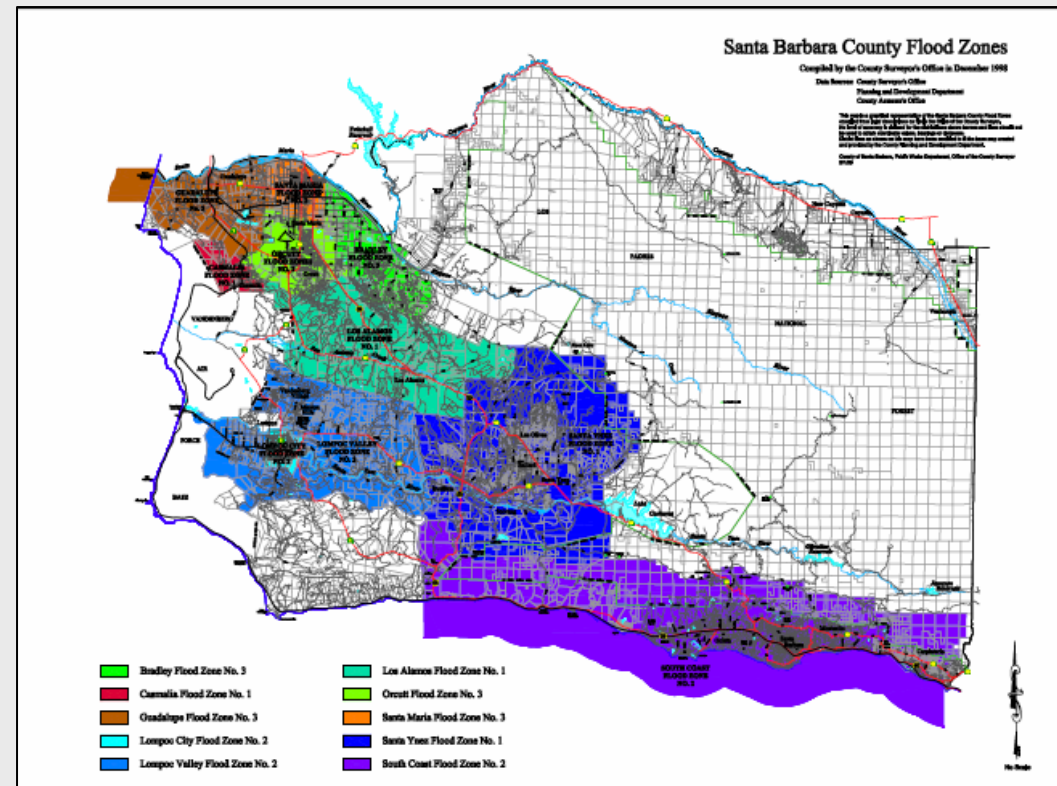


**Benefit Assessment Update  
Board of Supervisors Meeting  
June 21, 2011**

Santa Maria River Levee Reach 2 – Completed Work

# Flood Control Benefit Assessments

- Voter Approved Assessments
- Assessment Approved with an Annual CPI Adjustment to Preserve Funding Levels
- Proposed Increase 3.0% for FY 2011-12



# Proposed Benefit Assessment Rates FY 2011 - 2012

	Group A		Group B		Group C		Group D		Group E	
	FY 2011-2012		FY 2011-2012		FY 2011-2012		FY 2011-2012		FY 2011-2012	
	\$/Ac	Min \$ Asset	\$/Ac	Min \$ Asset	\$/Ac <sup>1</sup>  (over 0.3 Ac only)	Min \$ Asset	\$/Ac	Min \$ Asset	\$/Ac	Min \$ Asset
<b>Bradley #3</b>	<b>39.02</b>	<b>11.71</b>	<b>29.26</b>	<b>8.78</b>		<b>5.89</b>	<b>1.46</b>	<b>0.43</b>	<b>0.14</b>	<b>0.04</b>
<b>Guadalupe #3</b>	<b>20.66</b>	<b>6.19</b>	<b>15.50</b>	<b>4.66</b>		<b>3.11</b>	<b>0.78</b>	<b>0.24</b>	<b>0.08</b>	<b>0.02</b>
<b>Lompoc City</b>	<b>87.16</b>	<b>26.15</b>	<b>65.36</b>	<b>19.60</b>		<b>13.08</b>	<b>3.28</b>	<b>0.98</b>	<b>0.31</b>	<b>0.09</b>
<b>Lompoc Valley</b>	<b>34.04</b>	<b>10.20</b>	<b>25.51</b>	<b>7.65</b>		<b>5.09</b>	<b>1.27</b>	<b>0.38</b>	<b>0.13</b>	<b>0.03</b>
<b>Los Alamos</b>	<b>43.28</b>	<b>12.99</b>	<b>32.47</b>	<b>9.73</b>		<b>6.49</b>	<b>1.62</b>	<b>0.48</b>	<b>0.16</b>	<b>0.04</b>
<b>Orcutt</b>	<b>25.94</b>	<b>7.79</b>	<b>19.45</b>	<b>5.84</b>		<b>3.90</b>	<b>0.97</b>	<b>0.29</b>	<b>0.10</b>	<b>0.03</b>
<b>Santa Maria</b>	<b>82.98</b>	<b>24.90</b>	<b>62.24</b>	<b>18.72</b>		<b>12.44</b>	<b>3.12</b>	<b>0.94</b>	<b>0.29</b>	<b>0.09</b>
<b>SMR Levee</b>	<b>22.39</b>	<b>6.72</b>	<b>16.79</b>	<b>5.04</b>		<b>3.37</b>	<b>0.83</b>	<b>0.26</b>	<b>0.09</b>	<b>0.02</b>
<b>SantaYnez #1</b>	<b>19.12</b>	<b>5.74</b>	<b>14.34</b>	<b>4.30</b>		<b>2.86</b>	<b>0.71</b>	<b>0.22</b>	<b>0.08</b>	<b>0.02</b>
<b>South Coast</b>	<b>145.66</b>	<b>43.70</b>	<b>109.24</b>	<b>32.77</b>		<b>21.85</b>	<b>5.46</b>	<b>1.64</b>	<b>0.54</b>	<b>0.16</b>

# Recommendations



Approval of Item A (1 & 2)

- First Reading

Return July 5, 2010 for

- Second Reading and Final Adoption

**Lower Mission Creek – Reach 1A**