

# Laguna County Sanitation District

FY 2010 – 2011  
Presentation





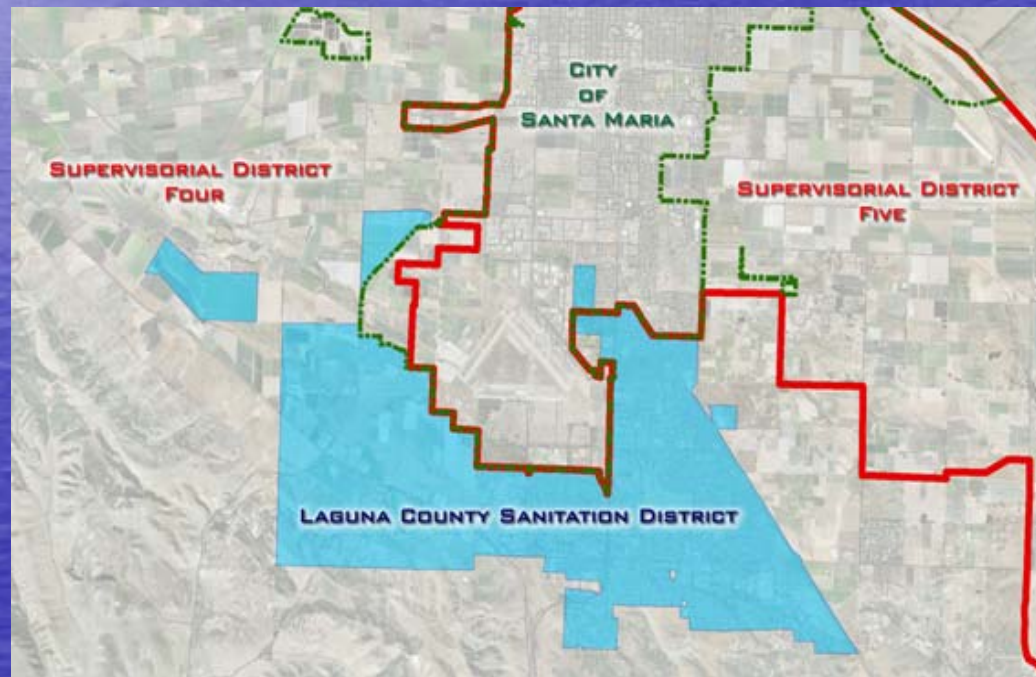
# Laguna County Sanitation District



- Dependent Special District created in 1958
- Provides wastewater services to Orcutt and unincorporated Santa Maria area
- Operates under:
  - RWQCB Order 01-042 (plant)
  - EPA CA 20000001 (injection well)
  - SWRCB 2006-0003 (sewer system)
  - APCD (plant air emissions)
- Conserves and protects resources

# Annual Rates and Fee Ordinance

- Public noticing pursuant to Prop 218
  - Mailer to 9,200 parcels and 880 mobile homes
- Hearing dates published pursuant to Government Code in Santa Maria Times



- No written responses to date



# Sewer Charge Rates

- Pays for annual operation, maintenance, and replacement
- Collected on the tax roll
- 6% increase proposed for FY 2010-2011
- Rate increases for other wastewater agencies in Santa Barbara County range between no change and 16%

# Proposed Sewer Service Charge for 2010-2011

- Residential unit is standard unit of measure

Proposed annual rate	\$550.64
<u>Last year's rate</u>	<u>\$519.47</u>
Rate increase/yr	\$ 31.17

**Equivalent to \$2. 60/month**

# Proposed 2010-2011 Sewer Service Charge for all Billing Categories

- Residential \$550.64
- Multi-family \$494.16
- Schools \$29.80 per capita
- Commercial Based on volume and concentration



# How LCSD Compares Countywide

<u>Treatment Level</u>	<u>Agency</u>	<u>Monthly Rate</u>	<u>Inc</u>
Tertiary	Summerland	\$93.30*	8.0%
	Laguna	\$45.89	6.0%
Secondary	Montecito	\$90.36*	7.9%
	Santa Ynez	\$67.76*	7.0%
	Vandenberg Village	\$65.75	16.1%
	Los Alamos	\$59.79*	3.3%
	Mission Canyon	\$59.75	2.7%
	Carpinteria	\$51.03*	
	Lompoc	\$50.22	9.4%
	Cuyama	\$45.00	
	Goleta Sanitary	\$34.62*	
	Santa Barbara	\$34.21	4.1%
	Solvang	\$32.48	
	Goleta West Sanitary	\$31.22*	
	Santa Maria	\$12.62	4.0%
Primary	Mission Hills	\$31.50	
	Guadalupe	\$24.20	
	Buellton	\$18.00	
Average		\$47.09	

\* These rates include estimated property tax contributions

# Total Water Cost Comparison

<u>Agency</u>	<u>09 Water/Mo</u>	<u>Water and Sewer/Mo</u>
Summerland + Montecito Water	\$69.95	\$163.25
Montecito + Montecito Water	\$69.95	\$160.31
Carpinteria + Carpinteria Valley Water	\$94.42	\$145.45
Santa Ynez + Santa Ynez RWCD 1	\$54.70	\$122.46
Solvang	\$89.75	\$122.23
Mission Canyon + Santa Barbara	\$51.87	\$111.62
Lompoc	\$50.54	\$100.76
Los Alamos	\$40.12	\$99.91
Goleta Sanitary + Goleta Water	\$64.73	\$99.35
Vandenberg Village	\$33.56	\$99.31
Cuyama	\$53.45	\$98.45
Goleta West Sanitary + Goleta Water	\$64.73	\$96.95
Santa Barbara	\$51.87	\$86.08
Laguna + Golden State Water	\$28.64	\$74.53
Santa Maria	\$51.53	\$64.15
Mission Hills	\$25.60	\$57.10
Guadalupe	\$32.50	\$56.70
Buellton	\$37.90	\$55.90
Average		\$100.81



# Developer Impact Fees



- Paid by development for system impacts
  - Trunk line fees fund sewer system capacity improvements
  - Connection fees fund future treatment and disposal capacity improvements

# Impact Fee Schedule for 2010-2011

- Fees adjusted by indices pursuant to ordinances and agreements
- Connection Fee (no change)
  - Single family \$4,862
  - Multi family \$4,376
- Trunk Line Fees
  - Dutard trunk line (no change) \$ 865
  - Bradley trunk line (3.25%) \$1,934



# Recommendations

- Conduct first reading of the ordinance to revise service charges and fees
- Adopt the ordinance setting the rates for FY 10/11 at the second hearing on May 25, 2010