

Long-Term Water Supply Update



**Board of Directors
Santa Barbara County Water Agency
October 4, 2016**

Long-Term Water Supply Study

- Plan Approved at the Board on December 15, 2015
 - Board Requested Update in September 2016
- Plan and Projects Incorporated into Santa Barbara County Integrated Regional Water Management Plan (IRWMP) February 2, 2016
- Drought Continues and Supply Shortages Loom
- Supply Conditions Variable throughout the County
 - purveyor summaries attached to Board Letter

Long-Term Water Supply Study

- Plan Incorporated to the County's IRWMP
 - Approved by IRWMP Group February 2, 2016
- Plan and Projects eligible for future rounds of IRWMP Funding
- Funding history
 - Prop 50 - \$25 million
 - Prop 84 R1 - \$555,737 (planning)
 - Prop 84 R1 - \$3 million(implementation)
 - Prop 84 Drought - \$2.1 million
 - Total IRWMP - \$30.68 million



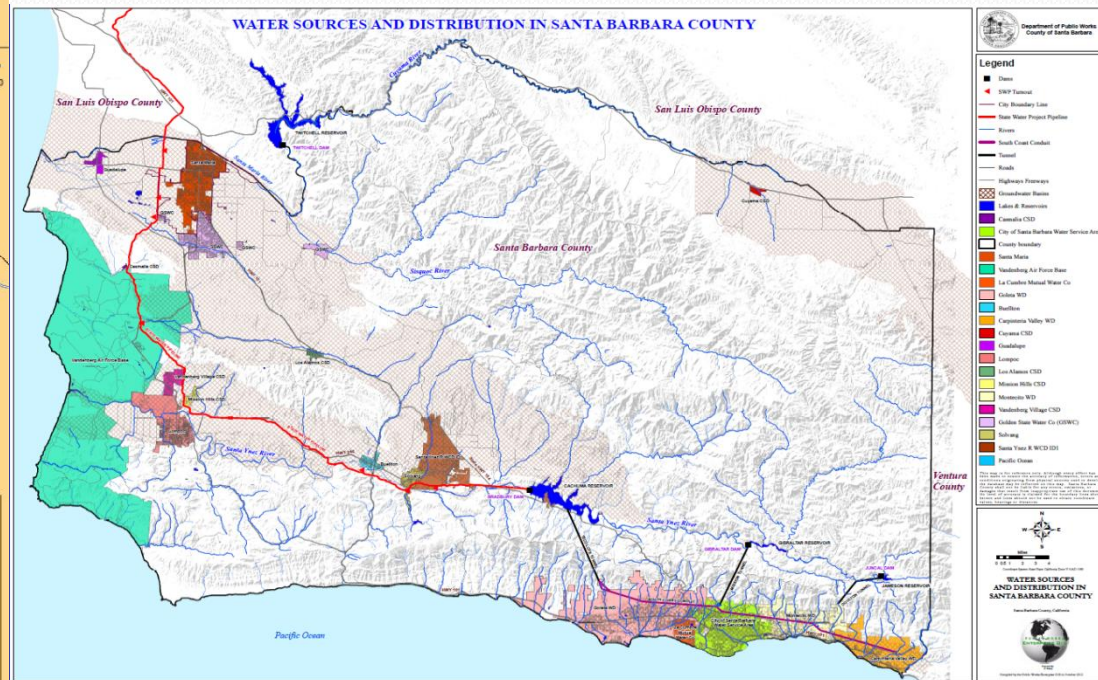
Recent Water Supply Actions

- Suspended Table A (SWP)
 - 12,214 AFY sought by Cities of Santa Maria, Guadalupe, Solvang, ID1, and Carpinteria Valley Water District
- Desalination Plant
 - City of Santa Barbara Charles E. Meyer Desalination Plant
 - 3,125 to 10,000 AFY capacity, Montecito WD Interest
- Recycled Water
 - Studies in Carpinteria, Goleta, Santa Ynez, Montecito, Laguna
- Stormwater Capture (Goleta)

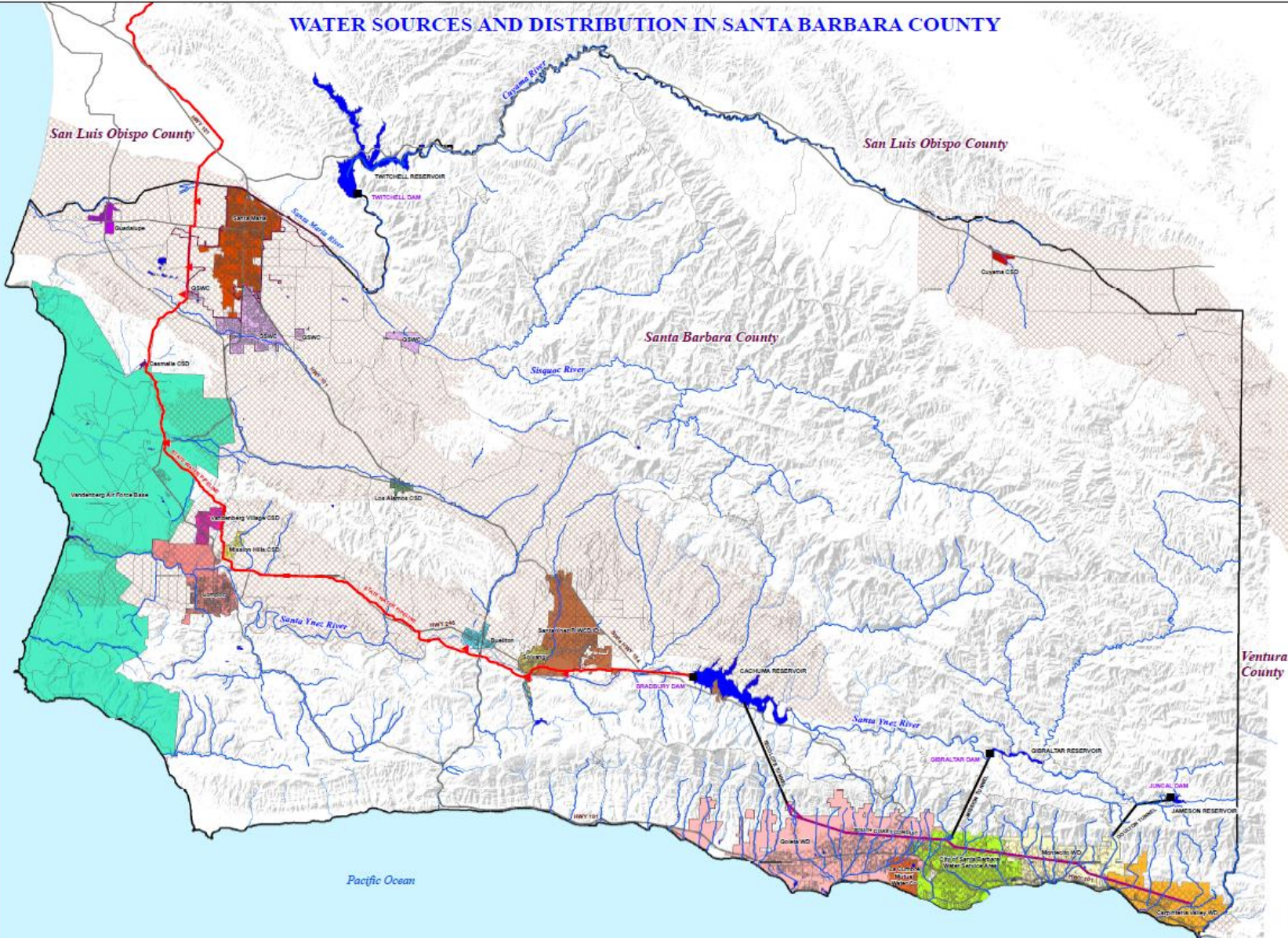


Options for Regional Desal

- DWR and CCWA Facilities offer distribution Opportunities for a Regional Desal Plant
- State Assistance needed to discuss a “buyout”
- Need Regional Interest



County Regional Plumbing / Water Transmission Facilities





Department of Public Works
County of Santa Barbara

Legend

- Dams
- ◀ SWP Turnout
- City Boundary Line
- State Water Project Pipeline
- Rivers
- South Coast Conduit
- Tunnel
- Roads
- Highways Freeways
- ▨ Groundwater Basins
- Lakes & Reservoirs
- Camilla CSD
- City of Santa Barbara Water Service Area
- ▭ County boundary
- Santa Maria
- Vandenberg Air Force Base
- La Cumbre Mutual Water Co
- Goleta WD
- Buellton
- Carpinteria Valley WD
- Cuyama CSD
- Guadalupe
- Lompoc
- Los Alamos CSD
- Mission Hills CSD
- Montecito WD
- Vandenberg Village CSD
- Golden State Water Co (GSWC)
- Solvang
- Santa Ynez R WCD ID1
- Pacific Ocean

This map is for reference only. Although every effort has been made to ensure the accuracy of information, errors and omissions may occur. The user assumes all liability for any damage that may result from inappropriate use of this document. The user of this map is advised that the boundary lines shown herein are not to be construed as a warranty of any kind.



Scale: 0 0.5 1 2 3 4 Miles

Coordinate System: North American Datum 1983, Zone 10, UTM (NAD83)

WATER SOURCES AND DISTRIBUTION IN SANTA BARBARA COUNTY

Santa Barbara County, California



2002
Copyright for Public Works Department © 2010 October 2010

Other Potential Projects

- Increase capacity of CCWA line into Cachuma
 - Long-Term Capital Project (CCWA)
 - Offer greater “lifeline capacity”
- Additional banking options (CCWA)
- Expansion of SB City’s Desal Plant
- Purveyor interest needed for Regional Projects



New Water Supply Issues

- California State Water Resources Control Board
 - Draft Order dated September 7, 2016 (Cachuma Project)
 - Draft Order specifies increased releases in year with inflow $> 37,707$ AF
 - Additional loss of storage may result = Lower Supply

Cachuma Reservoir Sept 15, 2016



Water Conservation Messaging

- Water Agency Fall/Winter Media Campaign – S. Coast Focus
 - Objective: Encourage end-users to fight drought fatigue and “*Renew Your Commitment to Water Conservation*”.
 - **TV PSA** (Ch. 20 & Ch. 3 KEYT)
 - **Radio ads** (based on PSA script – Rincon Broadcasting)
 - **Print ads** (SB Independent)
 - **Digital/Social Media ads** (Spectrum Digital; Noozhawk; Independent; Facebook)
 - **Bus ads** (MTD Bus – inside and outside)

Water Conservation Messaging

- RWEF Fall/Winter Media Campaign – County-Wide Focus
 - Objective: Encourage end-users to turn down their irrigation during winter months through a “Turn it Down” campaign.
 - **TV PSA** (Spectrum, KEYT, KKFX, KCOY, KSBY)
 - **Radio ads** (based on PSA script – Rincon Broadcasting, Knight Broadcasting, American General Media, Emerald Wave)
 - **Print ads** (SB Independent, SB News Press, SB Family Life, Santa Maria Sun, Lee Central Coast papers – SM Times, Lompoc Record, Santa Ynez Valley News)
 - **Digital/Social Media ads** (Spectrum Digital; Noozhawk; Independent; Facebook)

Water Conservation Messaging

Lake Cachuma Capacity

April 2014
35 percent

September 2016
7 percent

Renew your commitment to water conservation.



IN SANTA BARBARA COUNTY

www.WaterWiseSB.org

Lake Cachuma Capacity

April 2014
35 percent

September 2016
7 percent

Renew your commitment to conserve water this winter.

IN SANTA BARBARA COUNTY

Lake Cachuma Capacity

April 2014
35 percent

September 2016
7 percent

Renew your commitment to water conservation.
For more information visit www.waterwisesb.org.

IN SANTA BARBARA COUNTY

Lake Cachuma Capacity

September 2016
7 percent

This winter, renew your commitment to water conservation.

Continue to do all you can to preserve this vital resource.

The water you save now will help all of us in the future.

For more information visit www.WaterWiseSB.org.

IN SANTA BARBARA COUNTY

Questions

