



County of Santa Barbara Wildfire and Public Safety Power Shut Off Preparedness

July 16, 2024

Topics

- 2024 Fire Season
- Power Outages
- County Readiness
- Community Preparedness



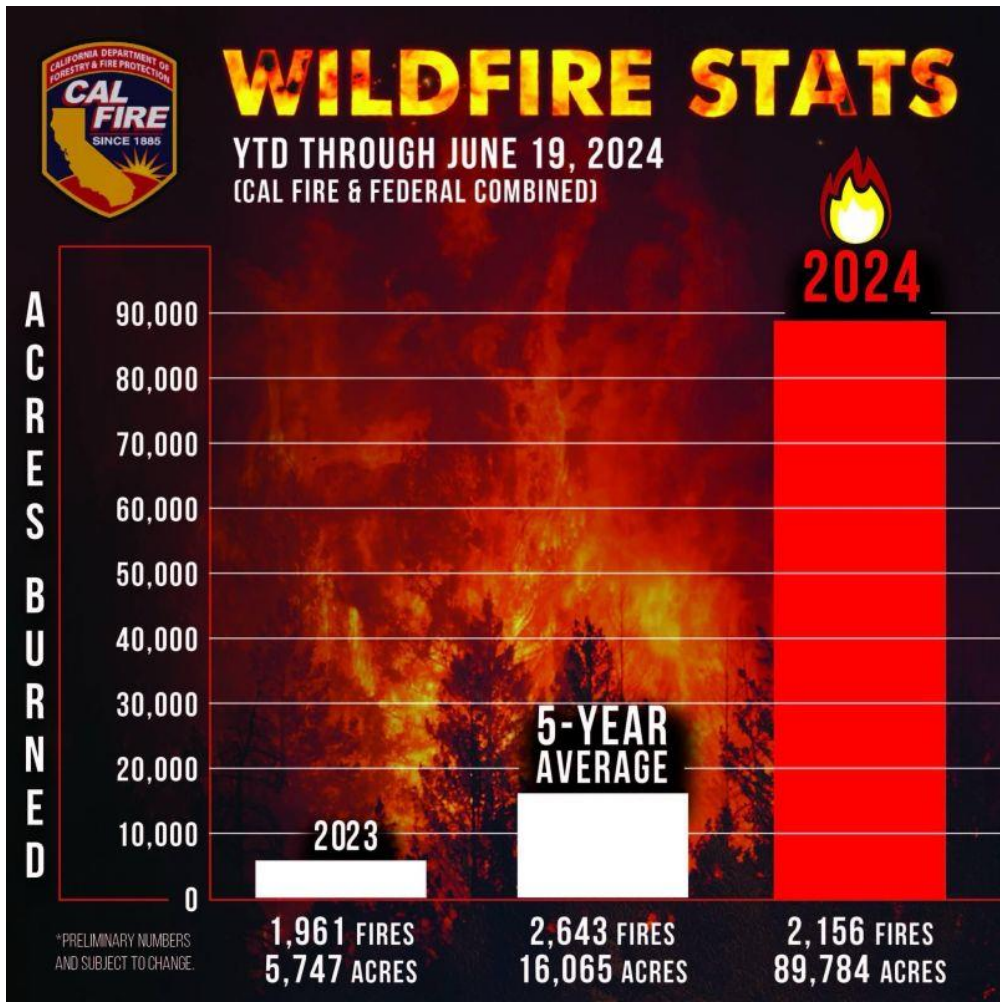


2024 Seasonal Outlook



CalFire Wildfire Stats

High Fire Season
declared
June 3, 2024



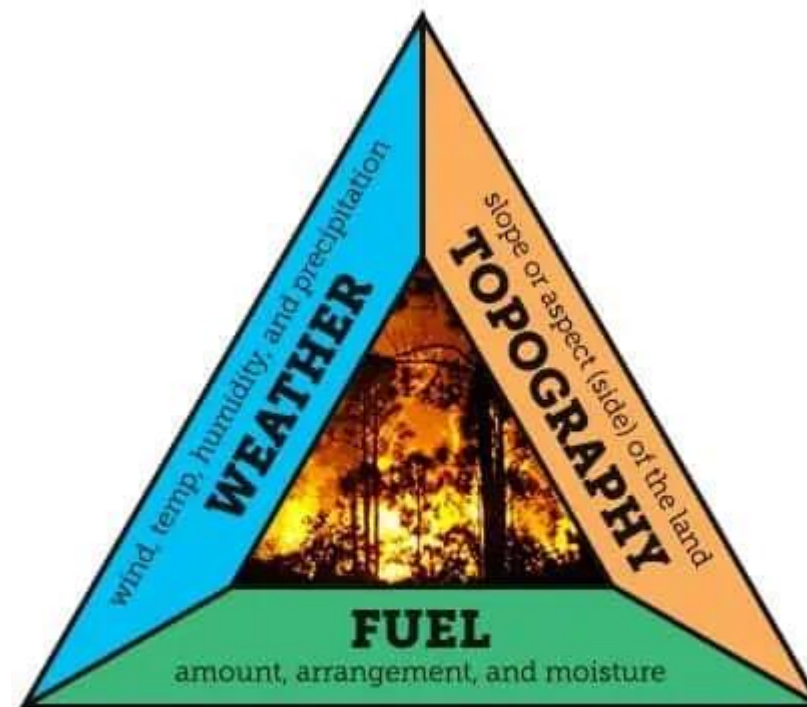
Current Conditions

Weather

- Temperatures
- Offshore winds
- Existing fires
- July to October large fire potential

Fuels

- Grass crops above normal
- Carry over fuels from last year
- Winds dry out fine fuels
- The #1 contributor potential growth



Fire Behavior Triangle

Rainfall vs Fire Activity

Drought Fires

- Painted Cave (June 1990) = 5,000 acres
- Zacca Fire (July 2007) = 240,207 acres
- Gap Fire (July 2008) = 9,500 acres
- Tea Fire (Nov. 2008) = 1,900 acres
- Jesusita Fire (May 2009) = 8,700 acres
- Sherpa Fire (June 2016) = 7,500 acres
- Ray Fire (Aug. 2016) = 32,600 acres

16+ inches rainfall

- Refugio Fire (Sept. 1955) = 79,500 acres
- Thomas Fire (Dec. 2017) = 281,900 acres
- Whittier Fire (July 2017) = 18,500 acres

Fire Resource Readiness

■ Seasonal Augmented Resources

- Fire Crew
 - 60 seasonal wildland firefighters hired
 - 4 (15-person) hand crews
- Aviation Support Unit
 - Type I helicopter (FIREHAWK) with (2) Paramedic/Crew Member
- Dispatch
 - (2) Additional Duty Officers

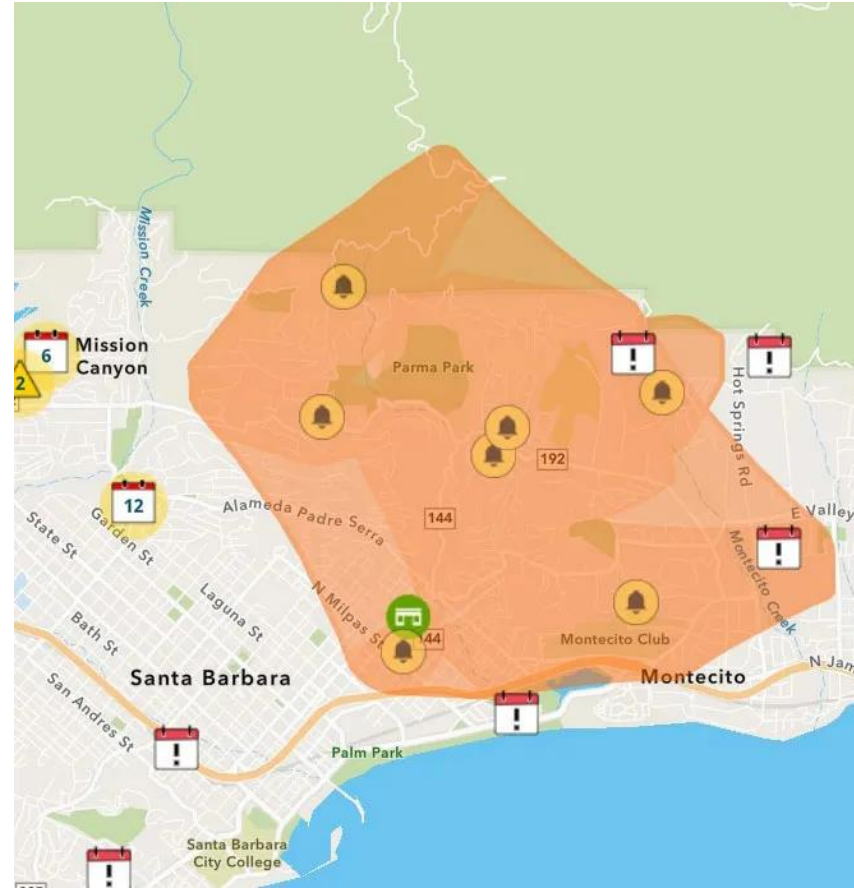
■ Robust Master Mutual aid System

- Engines
- Helicopters
- Airtankers
- Hand crews





Power Outages



Types of Power Outages



- Enhanced Powerline Safety Settings (EPSS)
- Public Safety Power Shutoff (PSPS)
- CAISO power grid stabilization
 - (Rotating Outages)
- Wind
- Accidents/human error
- Equipment failure
- Secondary emergency impacts

PSPS Response & Coordination

- Extensive infrastructure mitigation improvements
 - Enhanced vegetation management around infrastructure
- Power utilities lead public messaging
- Medical Baseline Customer program
 - Notifications
 - Temporary power supply resources
 - Hotels vouchers
- Customer Resource Centers/Community Crew Vehicles
- Nanogrid (solar/hydrogen) Trailer





County Readiness



County Coordination Efforts

- Countywide Wildfire Season Kick-Off Meeting
- Animal Evacuation discussions
 - General & large animal
- Participated in SCE Wildfire Exercise
- MOU with Project Camp (in development)
- Enhanced 2-1-1 contract
- Disaster Service Worker Policy Update
- Launch of
 - Emergency Public Information Communicators (EPIC)
 - OA Care & Shelter Committee
- Updated Alerting and information scripts
- North County Alternate EOC Planning
- EOC, Response and Plan Trainings
- Master EOC Roster by Department



Emergency Resources

- Community supply Caches
 - Carpinteria Girls Inc, Blue Sky Center, City of Guadalupe
- Emergency sheltering supplies
 - 3 trailers
 - Access Functional Needs (AFN) supplies
- Solar/Hydrogen community charging trailer



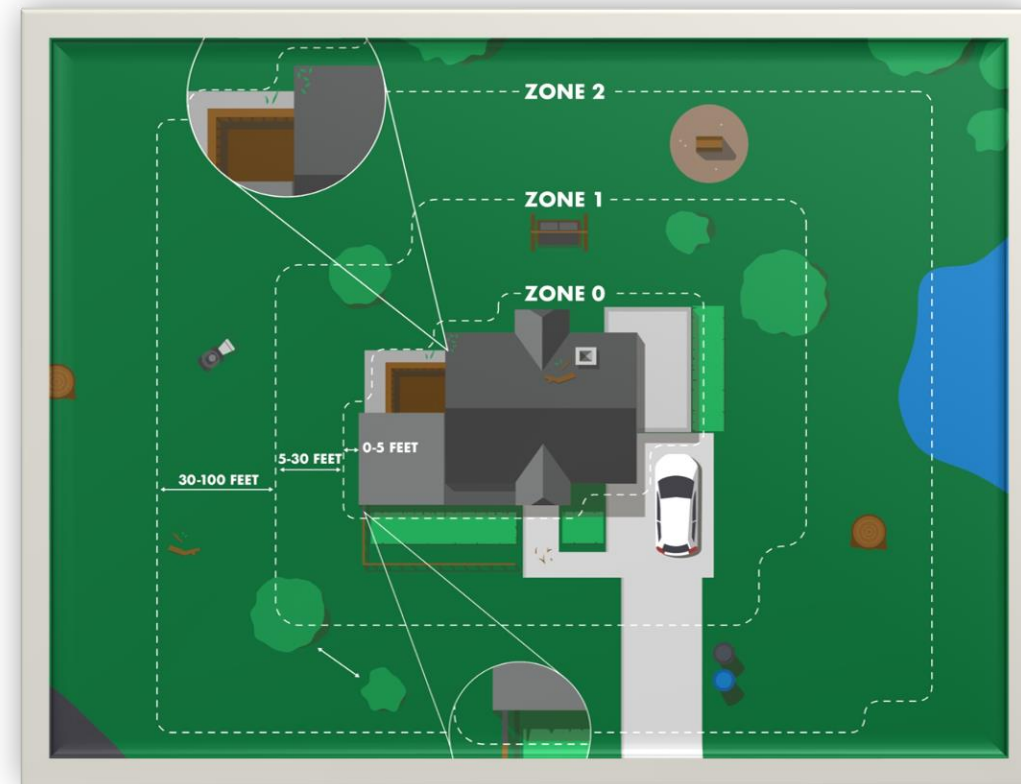


Community Preparedness



Defensible Space

- Establishes minimum standards
 - Removal of all brush, flammable vegetation, or combustible growth > 100 feet from structure
 - Shrubs and trees free of deadwood and litter
 - Roofs cleared
 - Access roads > 10 feet on each side



Defensible Space Program (DSP) Inspection Update

- Required under the CA Public Resource Code 4291
- The 2024 DSP inspections kicked off on June 17th
- Inspections required: 14,780
 - Completed as of June 28: 5,701 (38%)
- Of those 99.7% are passing on first inspection county wide



Individual Preparedness

Know Your Risk

- Protect your home and property

Be Prepared

- Have an emergency plan
- Have an emergency kit
- Know your neighbors!



Emergency Protective Actions



Shelter In Place

Go
Indoors!



- ✓ A **Shelter in Place** means there is a hazard in the area that poses a potential threat to life and/or property and **you should stay indoors or go to higher ground.**
- ✓ Once inside, shut and lock doors and windows.
- ⚠ Prepare to **self-sustain until further notice** and/or contacted by emergency personnel for additional direction.



Evacuation Warning

Prepare to
Leave!



- ✓ An **Evacuation Warning** means there is a hazard in the area that **poses a potential threat to life and/or property** and you may need to evacuate.
- ✓ Residents should remain alert, prepare essential items and pets, and be ready to leave at a moment's notice.
- ⚠ **Do not wait for an evacuation order; leave if you feel unsafe or threatened by the hazard.**
- ✓ People with **disabilities, access and functional needs** should leave at this time.
- ✓ People with **large animals** should also leave now.

If you feel unsafe or need
extra time to evacuate,
LEAVE EARLY!



Evacuation ORDER

Leave
Now!



- ✓ An **Evacuation Order** means there is a hazard in the area that **poses an immediate threat to life.** Anyone in the area should **evacuate immediately.**
- ⚠ An area under an Evacuation Order is **lawfully closed to the public.**
- ✓ An **evacuation center** will be established and announced shortly after the Evacuation Order is issued.

Do not hesitate,
LEAVE NOW!



Alerting & Information Tools

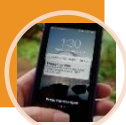
- Field first responder
- Door knocks
- Evacuation sirens
- Public loud speaker announcements

Field Notification



- No registration required (no contact database)
- Based on geographic location of cell towers
- FEMA program

Wireless Emergency Alerts (WEA)



- Phone call, text, email, and TTY/TDD
- REGISTRATION REQUIRED
- **MOST comprehensive**

ReadySBC Alerts



- Via TV and Radio
- Federal FCC program
- TV and Radio Stations are NOT required to share messaging
- NOAA/NWS Radio RECOMENDED

Emergency Alert System



- Zip code based; Text to register
- Not all notifications are sent via Nixle
- Message length is extremely limited

Nixle



- Follow & monitor official social media platforms

Social Media and ReadySBC.org



- 24-7 Staffed hotline
- Provide preparedness resources prior to and information during an emergency

211



- TV, Radio, Online, and Print

Traditional Media



- Partner Radio stations
- County AM Radio Stations (TBA)

Radio Ready



- Only operational during a large event
- Provides vital information to the community during an actual emergency

County Call Center



Register! ReadySBC Alerts

- **MUST REGISTER** at
 - www.ReadySBC.org OR
 - www.ReadySBC.org/es
- Register up to 5 ADDRESSES
- Must register at least one contact method and one physical address
- Can register several contact methods in the order you prefer to be reached
 - Text Message
 - Reverse calls to landline and cell phones
 - Email
 - TTY/TDD for the deaf and hard-of-hearing

The screenshot shows the County of Santa Barbara Emergency Preparedness website. The header includes the County logo, the text "COUNTY of SANTA BARBARA EMERGENCY PREPAREDNESS, RESPONSE and RECOVERY", and navigation links for "HOME", "PREPARE", "EMERGENCY", "RECOVERY", "NEWS", "MAPS", and "ESPAÑOL". A search bar is present with the placeholder text "How may we help you?..." and a magnifying glass icon. Below the search bar is a "Select Language" dropdown menu and a "Translate" button. The main content area features a large orange banner with a pencil icon and the text "Sign up for ReadySBC Alerts" followed by "If we can't reach you, we can't alert you!" and a link "Already have an account? Click here to sign in.". Below the banner are three colored buttons: a blue button with a clipboard icon, a red button with a warning triangle icon, and a green button with a heart icon and a person icon.

Social Media Handles

Agency	X	Facebook	Instagram
Santa Barbara County Sheriff	@sbsheriff	facebook.com/santabarbarasheriff	santabarbaracountysheriff
Santa Barbara County Office of Emergency Management	@SBCountyOEM	facebook.com/SBCountyOEM	N/A
County of Santa Barbara	@countyofsb	facebook.com/countyofsb	countyofsb
Santa Barbara County Fire	@SBCFireInfo	facebook.com/profile.php?id=100064496537886	santabarbaracountyfire
Santa Barbara County Public Works	@NWSLosAngeles	facebook.com/CountyOfSbPublicWorks	Sbcountypublicworks
National Weather Service	@NWSLosAngeles	facebook.com/NWSLosAngeles	nwslosangeles
Santa Barbara County Public Health Department	@SBPublicHealth	facebook.com/SBCountyPublicHealth	N/A
Air Pollution Control District	@OurAirSBC	facebook.com/profile.php?id=100069236738754	ourairsbc

Resource Links

- www.ReadySBC.org
 - Preparedness (people and pets)
 - Incident Information
 - Volunteer Information
- www.OurAir.org
 - How to create a clean air room
 - Our Air (APCD subscription)
- Weather:
 - General Info: www.Weather.gov/lox
 - Heat Risk: www.wpc.ncep.noaa.gov/heatrisk
- www.SBCfire.com
 - Defensible Space Program
 - Inspection Programs
- Know Your Risk:
 - <https://myhazards.caloes.ca.gov/>
- PGE (outage programs)
 - <https://www.pge.com/en/outages-and-safety.html>
- SCE (outage programs)
 - <https://www.sce.com/outage-center>
- Independent Living Resource Center (ILRC):
 - www.ilrc-trico.org/disaster-relief



Questions

