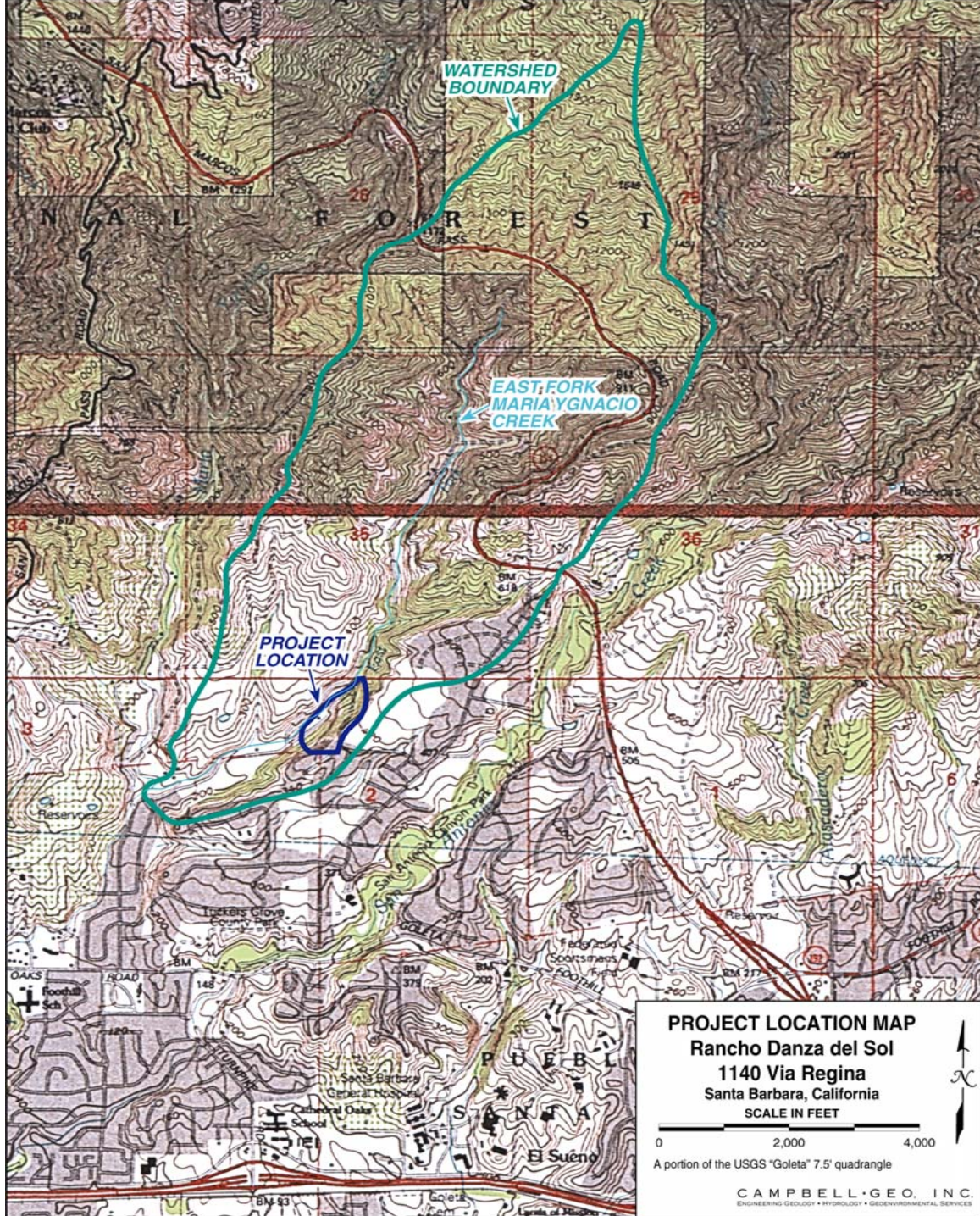


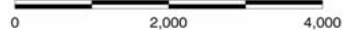
Rancho Danza del Sol

Presentation  
to Board of Supervisors

September 26, 2006

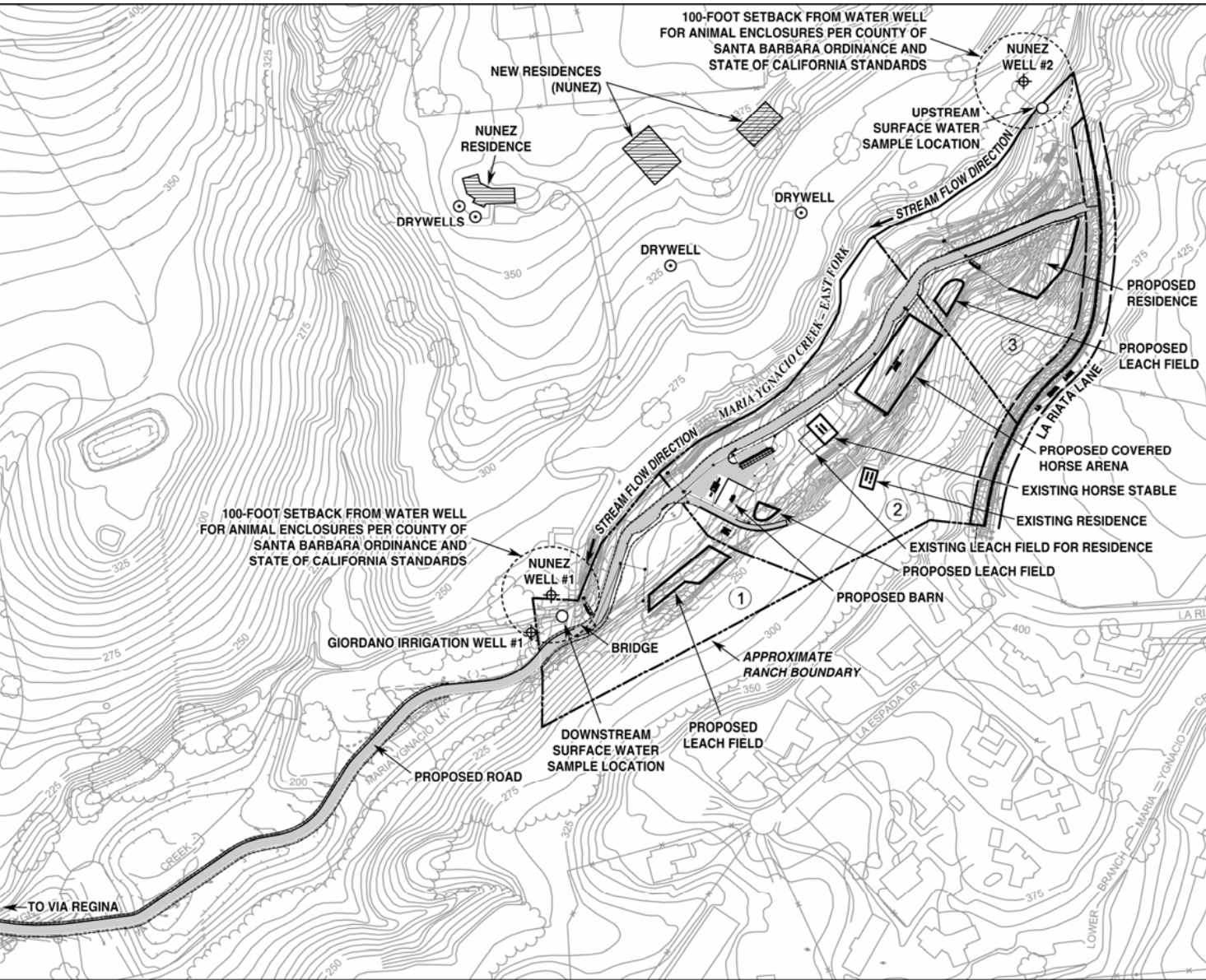


**PROJECT LOCATION MAP**  
Rancho Danza del Sol  
1140 Via Regina  
Santa Barbara, California  
SCALE IN FEET



A portion of the USGS "Goleta" 7.5' quadrangle

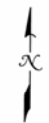




**SITE MAP**  
**Rancho Danza del Sol**  
**1140 Via Regina**  
**Santa Barbara, California**

**SYMBOLS**

- Creek Water Sampling Location
- ⊕ Existing Water Well
- ① Proposed Ranch Parcels
- ⊙ Existing Dry Well (Nunez) for Septic Effluent Disposal



**NOTES** Basemap from Flowers and Associates (5/12/06).  
 Nunez property improvements are shown in their approximate location based on a site plan by Pacific Engineering Associates.



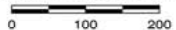
**SYMBOLS**

● Creek Water Sampling Location

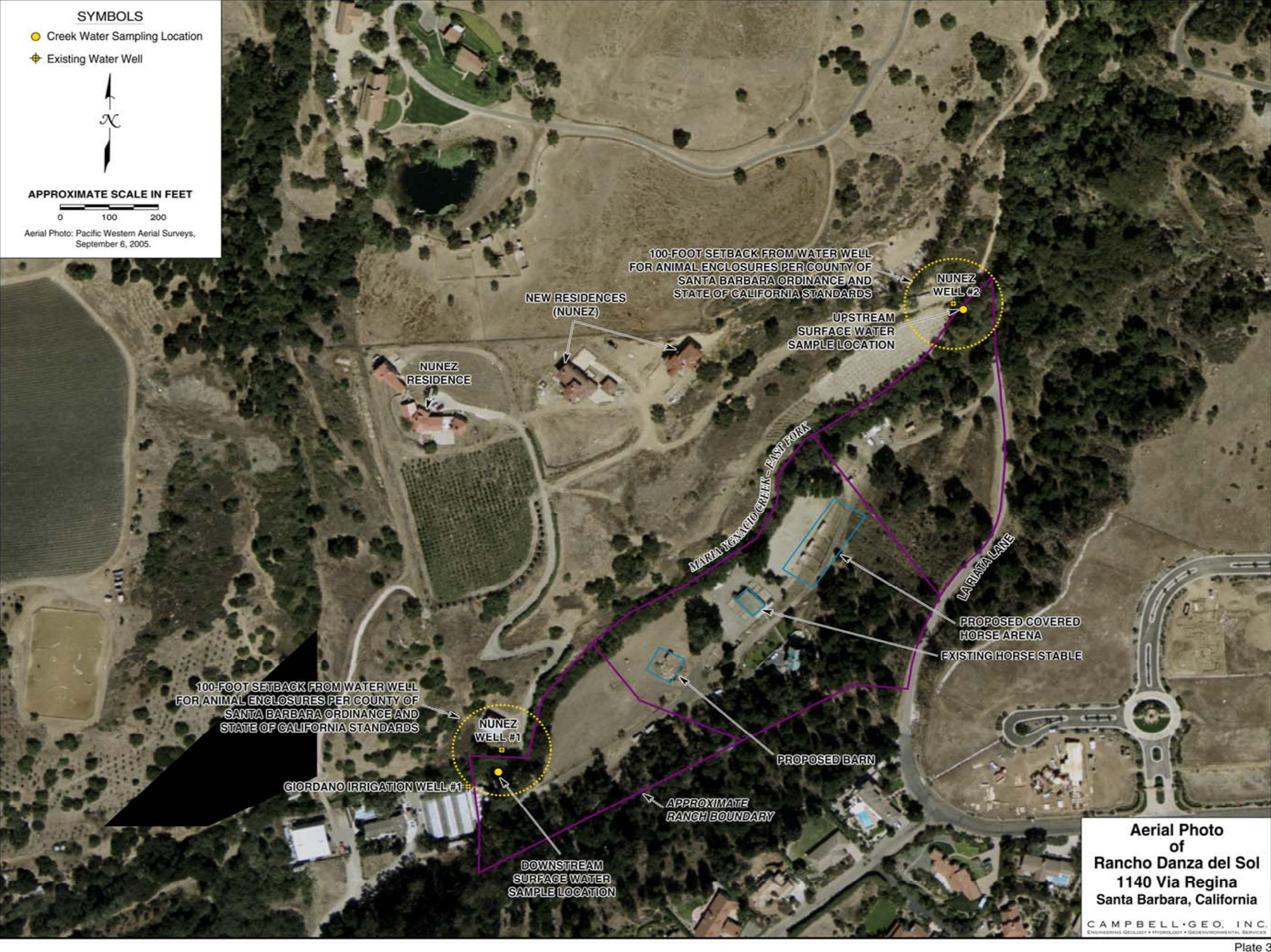
⊕ Existing Water Well



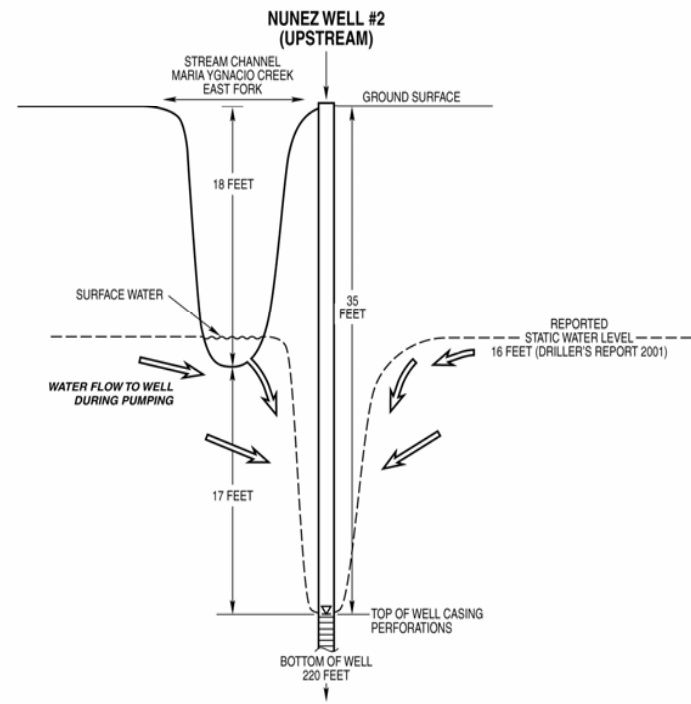
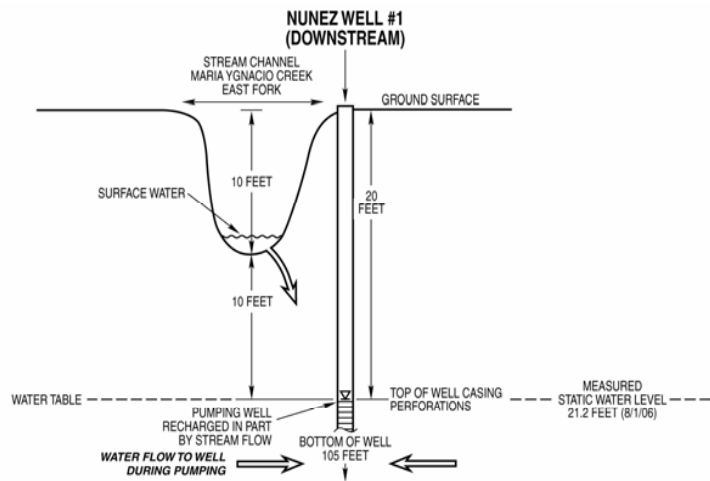
**APPROXIMATE SCALE IN FEET**



Aerial Photo: Pacific Western Aerial Surveys,  
September 6, 2005.



**Aerial Photo  
of  
Rancho Danza del Sol  
1140 Via Regina  
Santa Barbara, California**



**SCHEMATIC CROSS-SECTION  
OF  
MARIA YGNACIO CREEK AND NUNEZ WATER WELLS #1 AND #2  
Santa Barbara, California**

By DAS Date 9-22-06



**SYMBOLS**

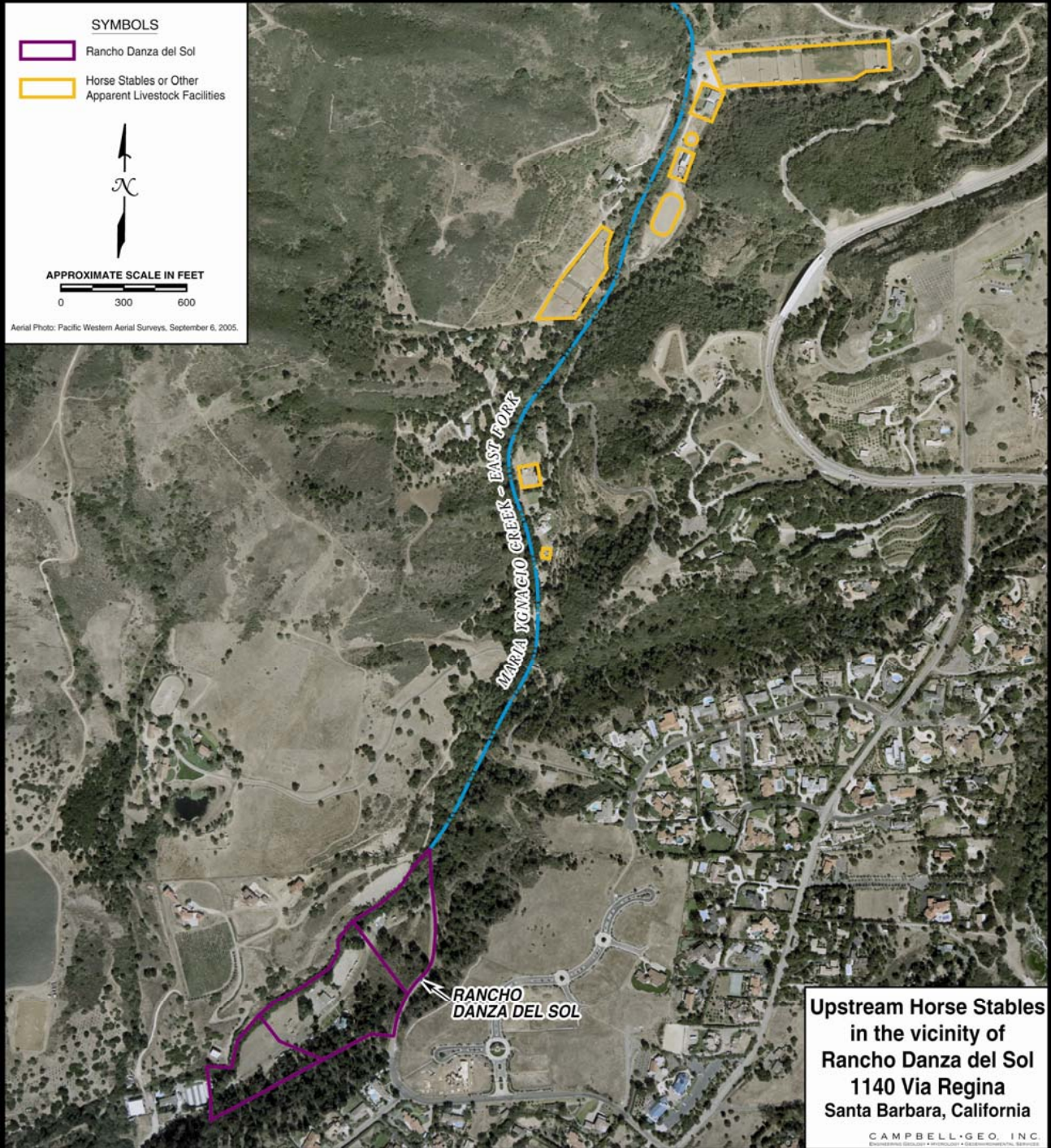
-  Rancho Danza del Sol
-  Horse Stables or Other Apparent Livestock Facilities



APPROXIMATE SCALE IN FEET

0 300 600

Aerial Photo: Pacific Western Aerial Surveys, September 6, 2005.



**RANCHO DANZA DEL SOL**

**MARIA IGNACIO CREEK - EAST FORK**

**Upstream Horse Stables  
in the vicinity of  
Rancho Danza del Sol  
1140 Via Regina  
Santa Barbara, California**

CAMPBELL GEO. INC.  
Environmental Services • Engineering • Geotechnical • Remediation

**TABLE I**  
**Summary of Laboratory and Field Analyses of Surface Water Samples**  
 Rancho Danza Del Sol  
 Santa Barbara, California  
 Page 1 of 2

Sample ID	Sample Date	Nitrite as N (mg/l)	Nitrate as N (mg/l)	Total Coliform (MPN/100 ml)	Fecal Coliform (MPN/100 ml)	Temperature (°C)	Dissolved Oxygen (mg/l)	Conductivity (µs/cm)	pH
Upstream A	5/31/06	0.1 <sup>(2)</sup>	NA	700	500	16.6	1.35	1008	8.40
Upstream B (duplicate)	5/31/06	NA	NA	1300	130	16.6	1.35	1008	8.40
Downstream A	5/31/06	<0.1 <sup>(2)</sup>	NA	500	80	16.4	1.02	1059	8.34
Downstream B (duplicate)	5/31/06	NA	NA	1700	50	16.4	1.02	1059	8.34
Downstream <sup>(4)</sup>	7/7/06	NA	NA	>23 <sup>(3)</sup>	>23 <sup>(3)</sup>	NA	NA	NA	NA
Upstream <sup>(4)</sup>	7/12/06	NA	NA	1600	110	NA	NA	NA	NA
Upstream A	8/1/06	<0.1	<0.1	1700	230	20.6	7.58	884	8.50
Upstream B (duplicate)	8/1/06	<0.1	<0.1	800	300	20.6	7.58	884	8.50
Downstream A	8/1/06	<0.1	<0.1	1300	130	20.2	7.97	940	8.48
Downstream B (duplicate)	8/1/06	<0.1	<0.1	2300	80	20.2	7.97	940	8.48
State of CA Standards for Body Contact		---		10,000 <sup>(1)</sup>	400 <sup>(1)</sup>				

See notes on page 2.

PPP Rancho Danza TI.doc

**TABLE I**  
**Summary of Laboratory and Field Analyses of Surface Water Samples**  
Rancho Danza Del Sol  
Santa Barbara, California  
Page 2 of 2

**Notes:**

MPN/100 = Most Probable Number per 100 m<sup>l</sup>

NA = Not Analyzed

- (1) Section 5.1, State of California DOHS, Draft Guidance for Freshwater Beaches (updated May 8, 2006), Single sample values.
- (2) Indicated results are for “nitrite as N plus nitrate as N.”
- (3) Indicates coliform analyzed by method SM 9223B. All other coliform results obtained by method SM 9221B.
- (4) Indicates July 2006 creek samples collected by Nunez/FGL at locations verbally reported by FGL courier.



**TABLE II**  
**Summary of Laboratory and Field Analyses of Groundwater Samples**  
Rancho Danza Del Sol  
Santa Barbara, California  
page 1 of 2

Sample ID	Sample Date	Nitrite as N (mg/l)	Nitrate as N (mg/l)	Nitrate as NO <sub>3</sub> (mg/l)	Total Coliform (MPN/100 ml)	Fecal Coliform (MPN/100 ml)	Temperature (°C)	Total Dissolved Solids (mg/l)	Conductivity (µs/cm)	pH
Nunez Well #1 (Cushman)	1/10/79	NA	NA	Trace	NA	NA	NA	1,318	1570	7.4
Nunez Well #1	8/20/96	ND	NA	0.8	NA	NA	NA	1,200	1700	7.1
Nunez Well #1	5/13/99	0.6	NA	0.8	NA	NA	NA	1,000	1100	7.0
Nunez Well #1	3/22/06	NA	NA	NA	23.0 <sup>(4)</sup>	<1.1 <sup>(4)</sup>	NA	NA	NA	NA
Nunez Well #1	5/15/06	NA	NA	NA	9.2 <sup>(4)</sup>	<1.1 <sup>(4)</sup>	NA	NA	NA	NA
Nunez Well #1	7/7/06	NA	NA	NA	16.1 <sup>(4)</sup>	1.1 <sup>(4)</sup>	NA	NA	NA	NA
Nunez Well #1	8/1/06	<0.1	0.3	1.5	<1	ND <sup>(1)</sup>	20.2	1,360	1,950	7.1
Nunez Well #1 (duplicate)	8/1/06	<0.1	0.4	NA	<1	ND <sup>(1)</sup>	---	NA	NA	NA
Nunez Well #2	3/22/06	NA	NA	NA	<1.1	ND <sup>(1)</sup>	NA	NA	NA	NA
Nunez Well #2	5/15/06	NA	NA	NA	<1.1	<1.1	NA	NA	NA	NA
Nunez Well #2	7/7/06	NA	NA	NA	<1.1	ND <sup>(1)</sup>	NA	NA	NA	NA
Nunez Well #2	8/1/06	1.47	1.0	4.3	<1	ND <sup>(1)</sup>	23.8	7,600	9,200	7.0
Nunez Well #2 (duplicate)	8/1/06	1.31	1.0	NA	<1	ND <sup>(1)</sup>	---	NA	NA	NA
Giordano Well #1	1/31/97	<0.1	NA	9.7	NA	NA	NA	1,400	1,900	7.1
Giordano Well #1A	5/31/06	NA	2.4 <sup>(2)</sup>	NA	<2	ND <sup>(1)</sup>	26.08	NA	2,535	7.2
Giordano Well #1B (duplicate)	5/31/06	NA	NA	NA	<2	ND <sup>(1)</sup>	---	NA	---	7.2
Giordano Well #1	8/1/06	<0.1	---	NA	1	<1	19.8	NA	2,169	7.3
Giordano "Well #2" (duplicate of Well #1)	8/1/06	<0.1	---	NA	1	<1	---	NA	---	---
State of California Drinking Water Standards CCR Title 22		1	10 <sup>(3)</sup>	45	any detection	any detection	---	1,000	1,600	---

See notes on page 2

PPP Rancho Danza Table II.doc

**TABLE II**  
**Summary of Laboratory and Field Analyses of Groundwater Samples**  
Rancho Danza Del Sol  
Santa Barbara, California  
page 2 of 2

**NOTES:**

MPN/100 = Most Probable Number per 100 ml

NA = Not Analyzed

ND = Not Detected

- (1) Fecal coliform, which is a subset to total coliform, was not analyzed (but is undetectable) in indicated sample because total coliform was undetectable.
- (2) Indicated result is for “nitrate + nitrite as N.”
- (3) Drinking water standard is for sum of “nitrite as N plus nitrate as N.”
- (4) Indicates coliform analyzed by method SM 9223B, which is specific to *e-coli* bacteria for fecal coliform results. All other coliform results obtained by method SM 9221B.