

Urgency Ordinance Prohibiting  
Use of Alcohol for Public  
Safety Purposes  
Presented By  
Santa Barbara County Sheriff, Fire,  
Parks, and Public Health  
Departments

# Floatopia 1 Overview

## April 6, 2009

- 2009 Floatopia 1
  - April 6, 2009
  - Facebook Confirmed Over 9000 attending
  - Staffed up with 12 Sworn Deputies/Officers
  - Started around 1130 hrs to 1830 hrs
  - No Aggression towards Law Enforcement

# Isla Vista Beach View of Floatopia 1

April 6, 2009



# Issue Overview: Incident April 4, 2009

- Facts:
  - Citations 78
  - Arrests 13
  - 2 People Fell Off Cliff
  - At least 33 People Treated at Hospital
  - At least One Person Hit With Bottle
  - People Throwing Debris From Balconies





# County and Other Agency Resources Consumed:

- 25 Firefighters (5 engine companies)
- 12 Sheriff Deputies
- Deputies from other Sheriff Stations and UCSB Police Departments
- Helicopter and jet skis
- Multiple ambulances
- Goleta and Santa Barbara Cottage Hospital Personnel
- Isla Vista Parks and Recreation

# DEBRIS POST EVENT



# Costs Associated with the Event

## COSTS

Sheriff's Office	\$ 7,500.00
UCSB Police	\$ 3,500.00
County Fire	\$ 8,344.00
IV Park & Rec.	\$ 959.21
Total	\$ 20,303.21



# Estimated Crowd Statistics Anticipated for May 9, 2009 Floatopia 2

- Event has been established on Facebook for May 9, 2009
- As of May 4, 2009
  - 11,705 Confirmed Guests
  - 6,527 Awaiting Replies
  - 8,244 Not Attending
  - Crowd could reach 25,000

# Incident Management Public Health & Safety Response

## 2009 Floatopia Planning Personnel Needs

- Boat Enforcement Team – Sheriff
- Major Events Planning Team – Sheriff
- Field Teams Dedicated to Beach and Bluff Area (40 personnel) – Sheriff
- Increased Custody Staff - Sheriff
- 2 Paramedic Foot Patrol Teams (4 personnel) – Fire
- 2 Personal Watercraft with Pilot and Rescue Swimmer (4 personnel) – Fire
- 1 Captain as Task Force Leader and 1 Captain as Duty Officer in Dispatch – Fire
- 4 Medical Reserve Corps Volunteers – Emergency Medical Services

**Estimated costs \$50,000**

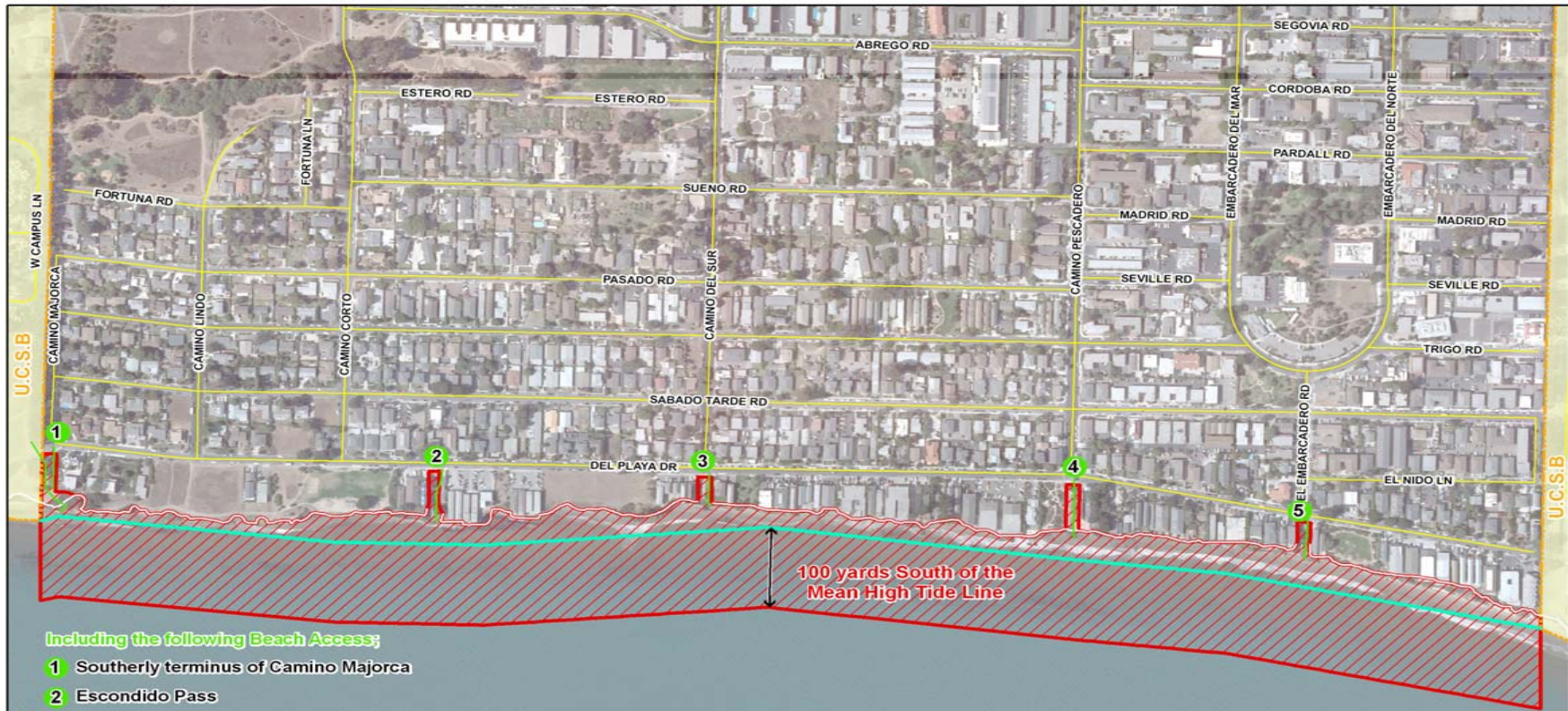
# Provisions of Proposed Urgency Ordinance

SECTION 2. Section 36-2 (a) of the Santa Barbara County Code is amended to read as follows:

- It is unlawful for any person to drink or consume any intoxicating liquor in the unincorporated areas of the county upon any public street, public sidewalk, public highway, public parking lot or public alley.

- North coastal bluffs at the southerly end of the properties fronting Del Playa Drive in the 6500, 6600, 6700 and 6800 blocks;
- West boundary of the University of California at Santa Barbara ("UCSB") separating unincorporated Isla Vista and UCSB, 6885 Del Playa Drive and extending the UCSB boundary to a point 100 yards South of the Mean High Tide Line of the Pacific Ocean;
- East property boundary separating unincorporated Isla Vista and UCSB, beginning at the 6500 block of Del Playa Drive and extending the UCSB boundary to a point 100 yards South of the Mean High Tide Line of the Pacific Ocean;
- South line 100 yards South of the Mean High Tide Line of the Pacific Ocean

# Map of Urgency Ordinance Boundaries



Including the following Beach Access;

- 1 Southerly terminus of Camino Majorca
- 2 Escondido Pass
- 3 Southerly terminus of Camino Del Sur
- 4 Southerly terminus of Camino Pescadero
- 5 Southerly terminus of El Embarcadero



Information Technology Department

## Isla Vista

### Area of Proposed Urgency Ordinance

- Mean High Tide Line
- Streets
- Coastal Access Trails
- U.C.S.B. Boundary
- Restriction Ordinance Boundary (Proposed)
- Coastal Blufftops

Compiled by the County Enterprise GIS in April 2009.



Scale bar showing 0, 200, and 400 feet.

Coordinate System: State Plane California Zone V NAD 83

This map is for reference only. Although every effort has been made to ensure the accuracy of information, errors and conditions originating from physical sources used to develop the database may be reflected on this map. Santa Barbara County shall not be liable for any errors, omissions, or damages that result from inappropriate use of this document. No level of accuracy is claimed for the boundary lines shown herein and lines should not be used to obtain coordinate values, bearings or distances.

# Penalty

The penalty for violating the provisions of Chapter 36 are as follows:

## Section 36-5. Penalty

- Any violation of this chapter is an infraction punishable by (a) a fine not exceeding one hundred dollars for a first violation; (b) a fine not exceeding two hundred dollars for the second violation of this chapter within one year; (c) a fine not exceeding five hundred dollars for each additional violation of this same section within one year. (Ord. No. 4055, § 1; Ord. No. 4122, § 1)

# Permit

- Permit provisions provided – administered by County Parks

# Current Alcohol Restrictions on Beaches

- Butterfly Beach & Hammonds Meadow in the community of Montecito
- All Parks within the community of Isla Vista
- Multiple municipalities throughout the State
- Carpinteria City and State Beach
- City of Santa Barbara
- Laguna Beach, Newport Beach, San Diego, Dana Point, Malibu, Santa Monica

QUESTIONS?

