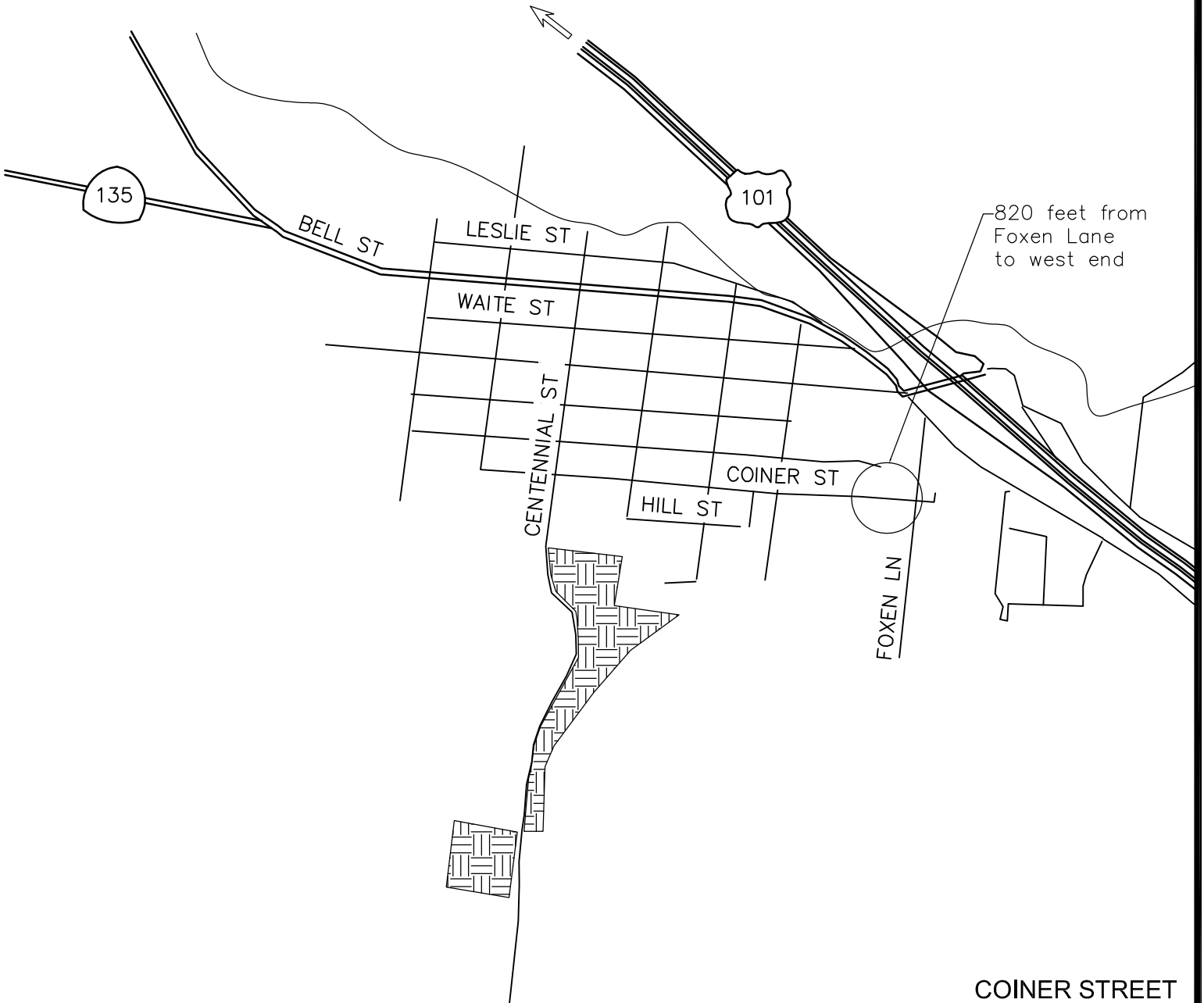
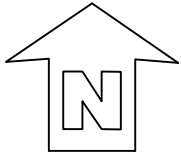


# NEW MAINTAINED ROADS

VICINITY MAP 1 OF 8

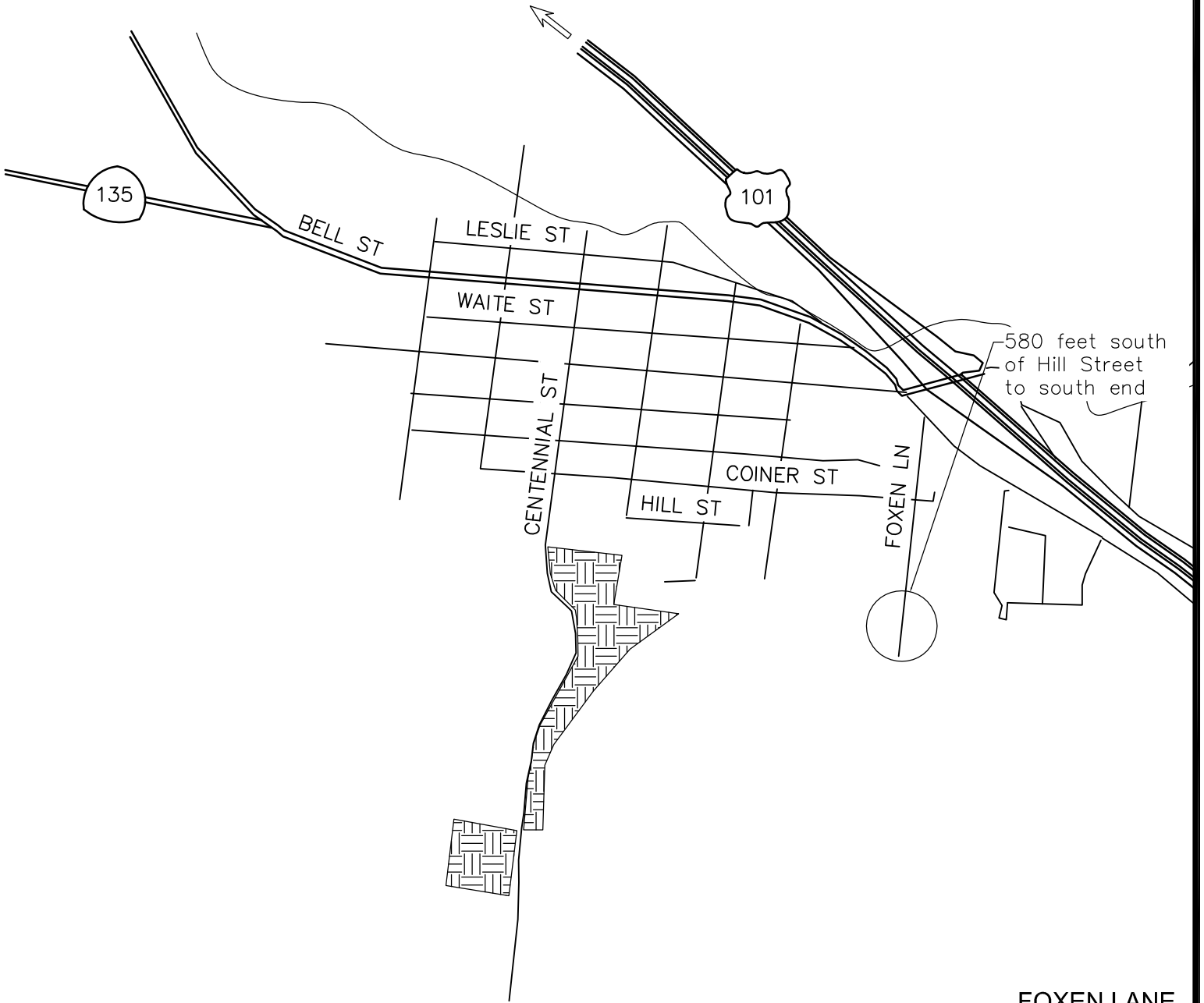
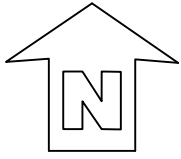


COINER STREET  
NO SCALE

COUNTY OF SANTA BARBARA  
DEPARTMENT OF PUBLIC WORKS  
TRANSPORTATION DIVISION

# NEW MAINTAINED ROADS

VICINITY MAP 2 OF 8

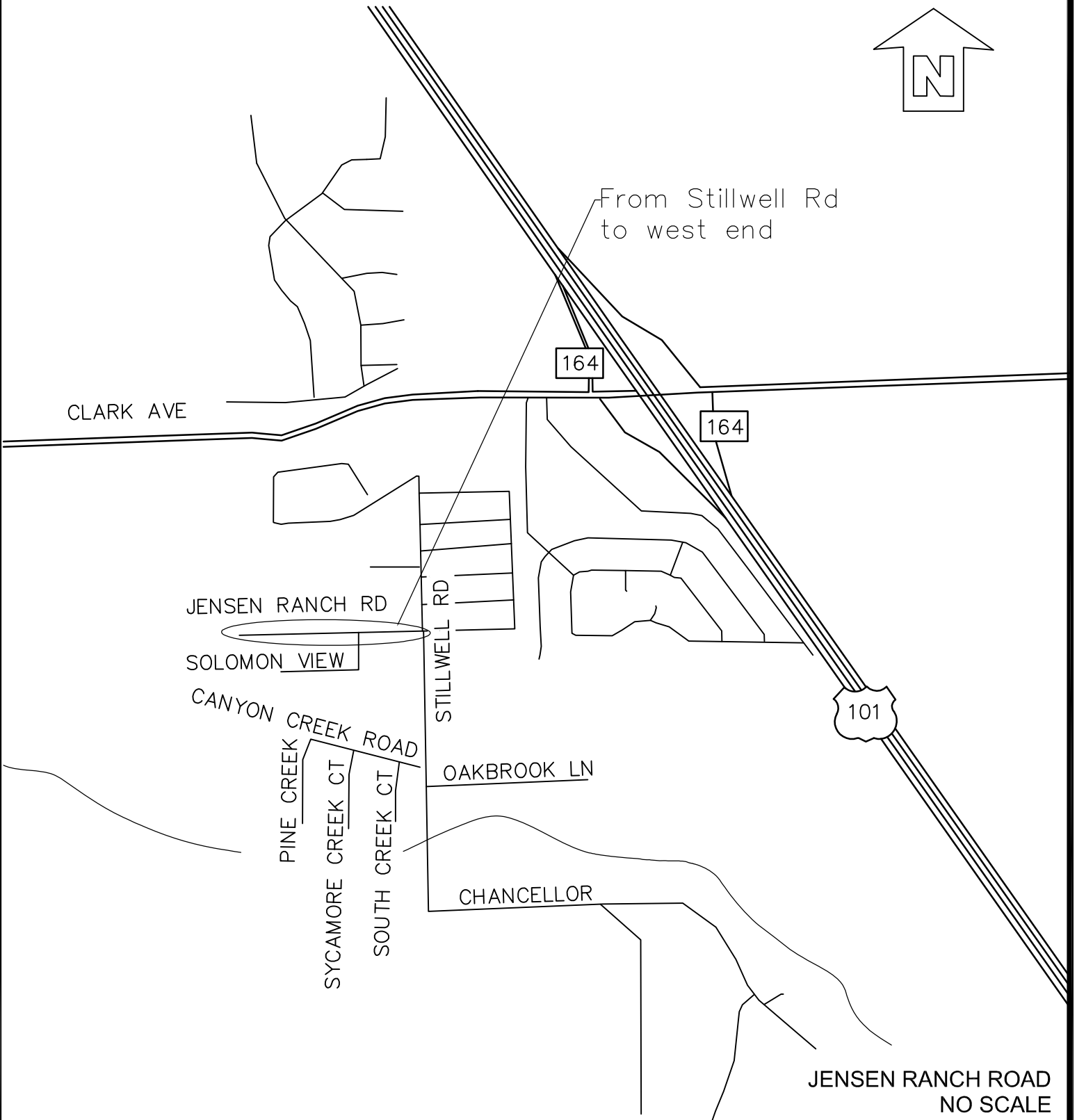
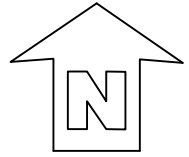


FOXEN LANE  
NO SCALE

COUNTY OF SANTA BARBARA  
DEPARTMENT OF PUBLIC WORKS  
TRANSPORTATION DIVISION

# NEW MAINTAINED ROADS

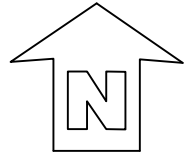
VICINITY MAP 3 OF 8



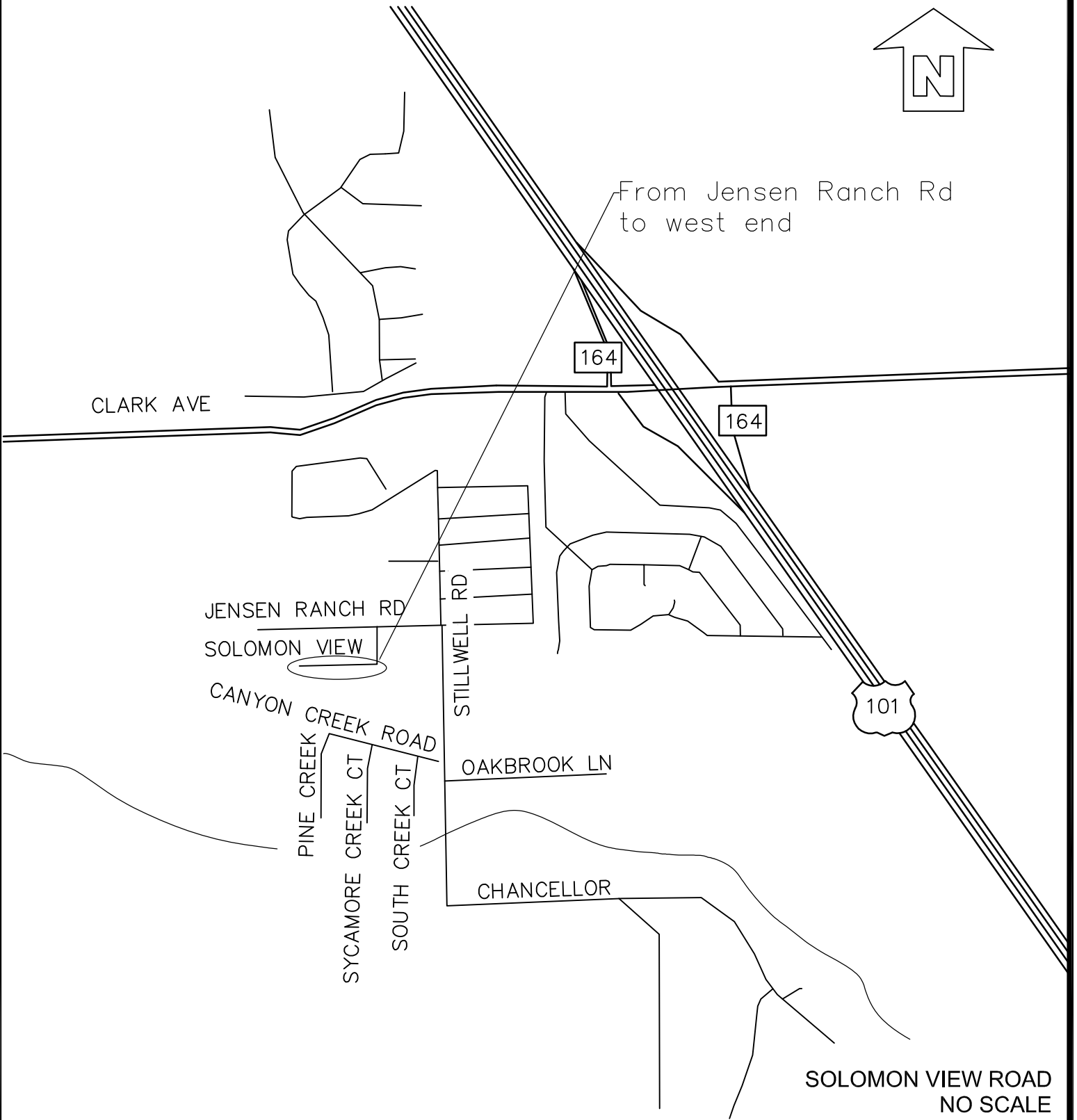
COUNTY OF SANTA BARBARA  
DEPARTMENT OF PUBLIC WORKS  
TRANSPORTATION DIVISION

# NEW MAINTAINED ROADS

VICINITY MAP 4 OF 8



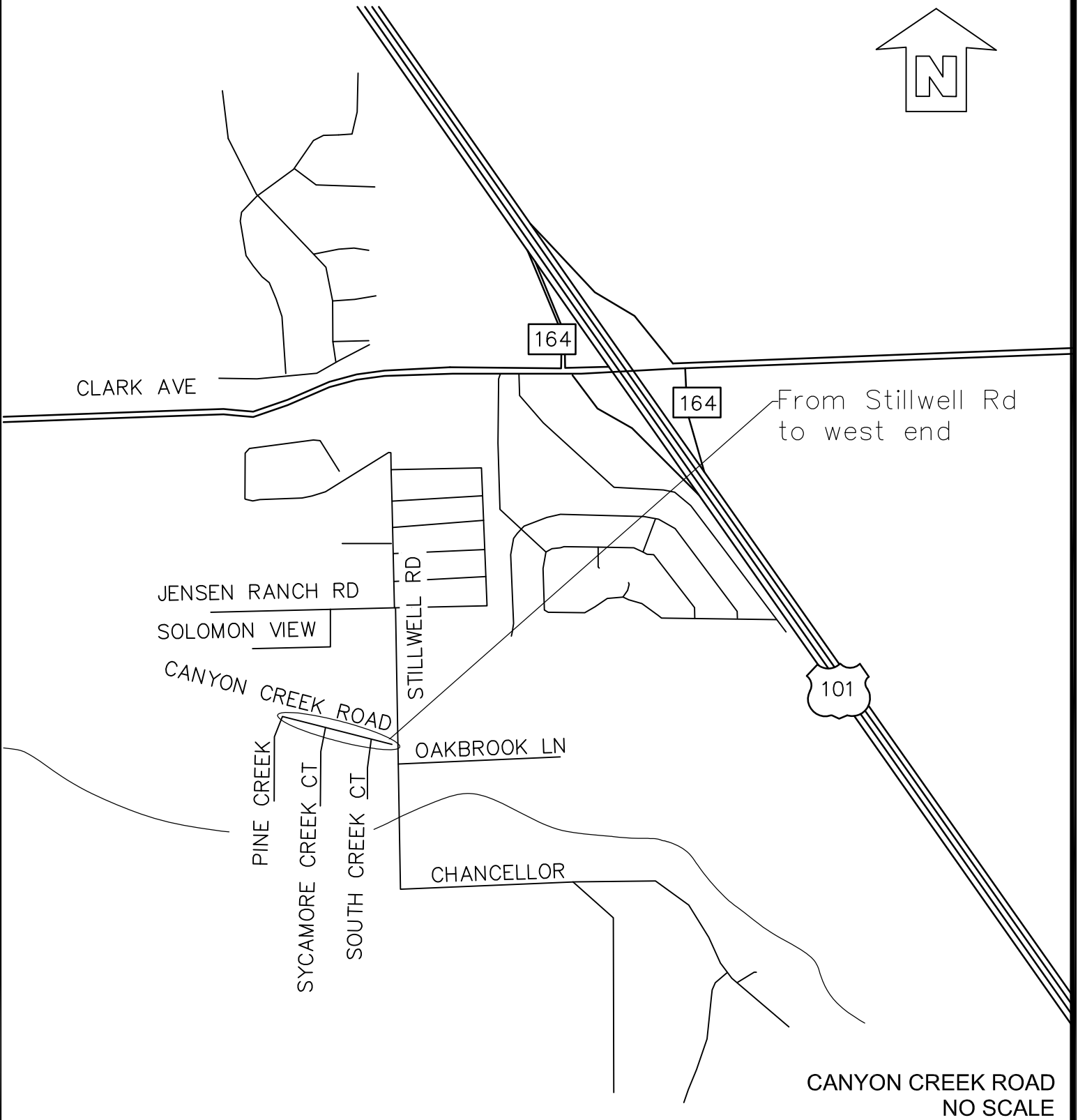
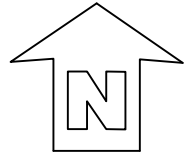
From Jensen Ranch Rd  
to west end



COUNTY OF SANTA BARBARA  
DEPARTMENT OF PUBLIC WORKS  
TRANSPORTATION DIVISION

# NEW MAINTAINED ROADS

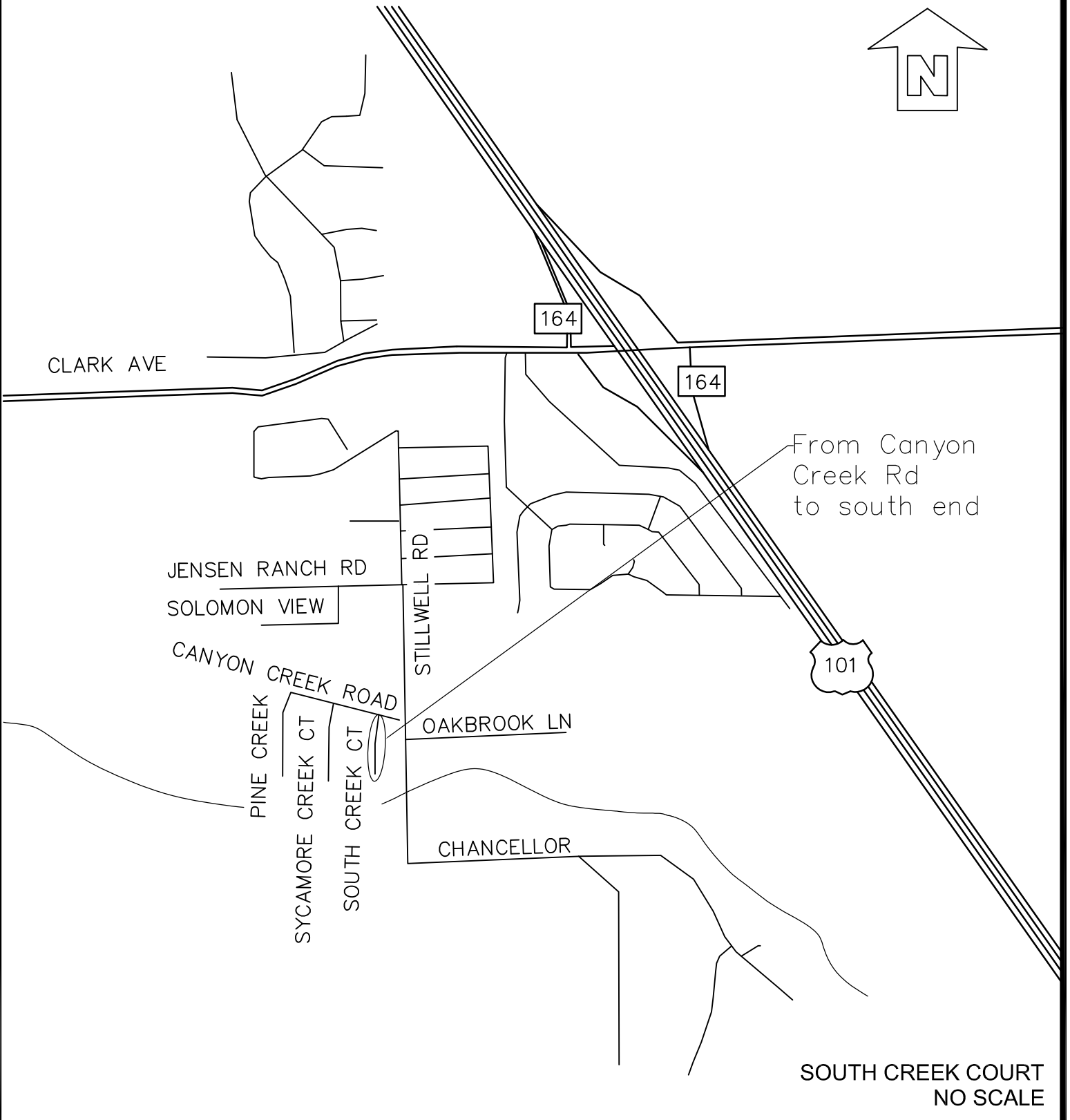
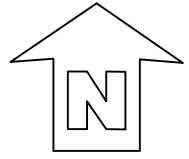
VICINITY MAP 5 OF 8



COUNTY OF SANTA BARBARA  
DEPARTMENT OF PUBLIC WORKS  
TRANSPORTATION DIVISION

# NEW MAINTAINED ROADS

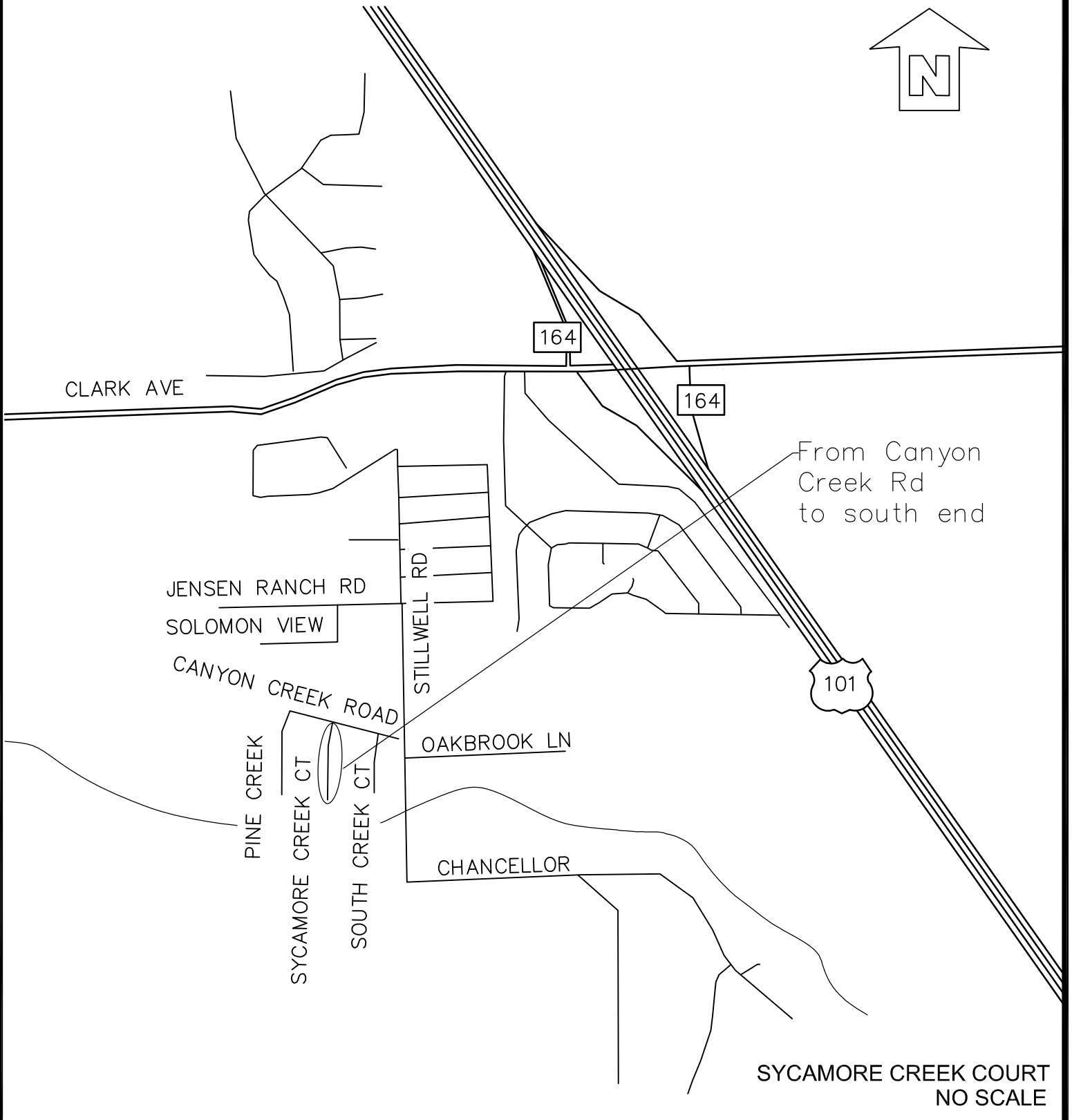
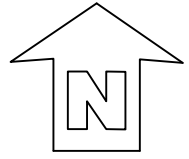
VICINITY MAP 6 OF 8



COUNTY OF SANTA BARBARA  
DEPARTMENT OF PUBLIC WORKS  
TRANSPORTATION DIVISION

# NEW MAINTAINED ROADS

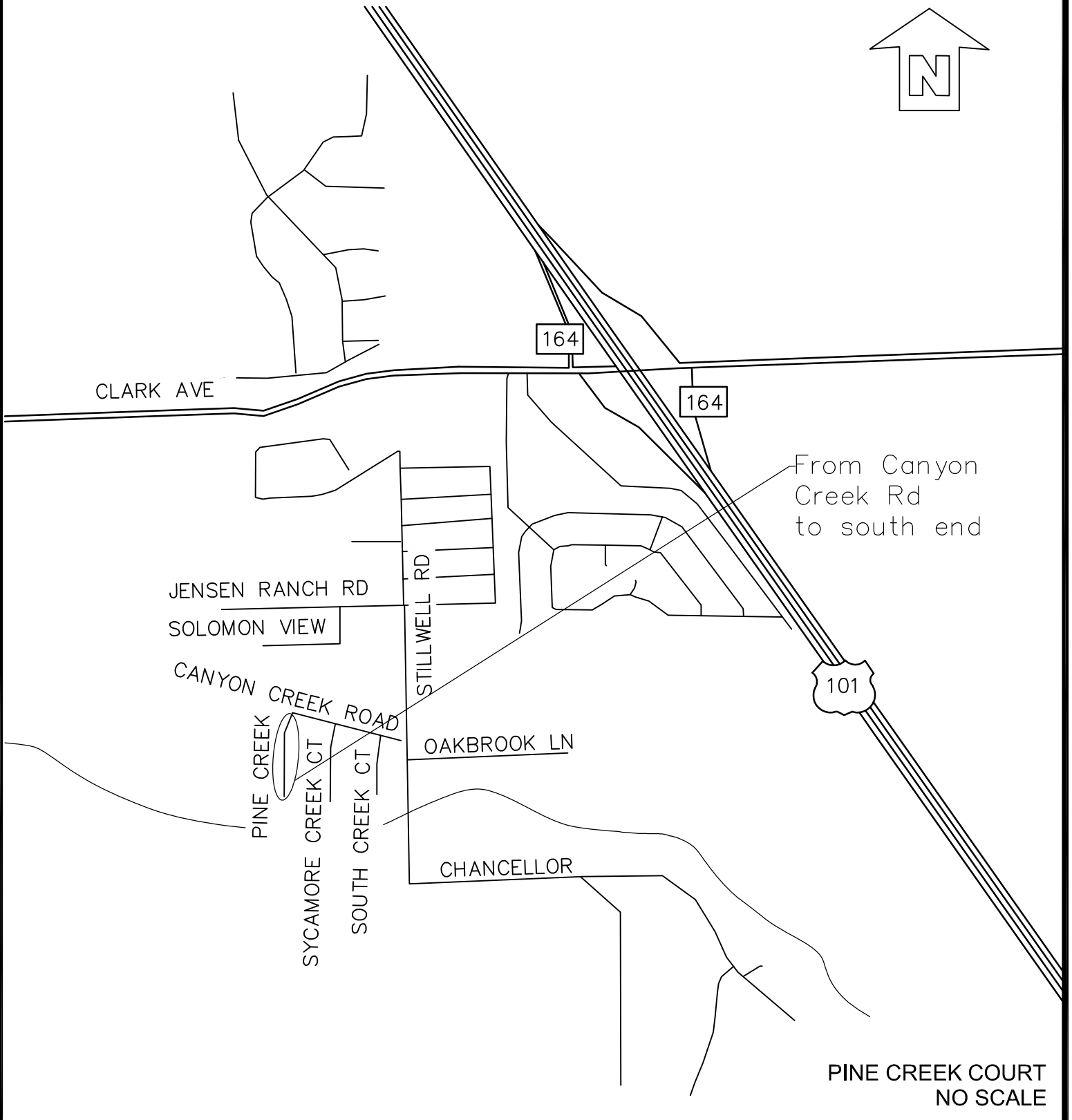
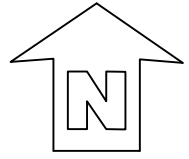
VICINITY MAP 7 OF 8



COUNTY OF SANTA BARBARA  
DEPARTMENT OF PUBLIC WORKS  
TRANSPORTATION DIVISION

# NEW MAINTAINED ROADS

VICINITY MAP 8 OF 8



COUNTY OF SANTA BARBARA  
DEPARTMENT OF PUBLIC WORKS  
TRANSPORTATION DIVISION