

SANTA BARBARA COUNTY

Resource Recovery &

Waste Management Division

Innovative Environmental Solutions



Proposed Tajiguas Landfill Capacity Increase Project

Tuesday, March 19, 2024

Agenda

- Introductions
- Waste Management Services
- History of the Tajiguas Landfill
- Project Objectives and Overview
- CEQA Review
- Financial Considerations
- Staff Recommendations



Introductions and Acknowledgments

- County Team

- Jeanette Gonzales-Knight, Technical Deputy Director
- Joddi Leipner, Environmental Engineering Project Leader
- Jamie Reyes Perry, Civil Engineer Specialist
- Travis Spier, Operations Manager
- Kevin Brown, Compliance Manager

- Consultants

- Padre Associates, Inc. (Subsequent EIR Preparation)
- SWT Engineering (Capacity Increase Engineering and Design)

Regional Waste Management Services

- Municipal solid waste
- Recyclables
- Green & Food Waste
- Hazardous & Special Waste
 - Paints, solvents, cleaners
 - Batteries & E-waste
 - Pharmaceuticals & Sharps
- Waste collection at homes & businesses
- Education in Schools
- Community Outreach
- Backyard Composting
- Community Clean Up

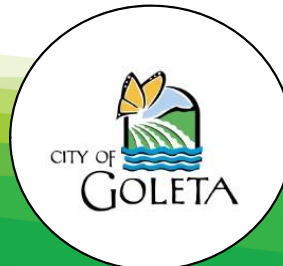


Communities Served

- The Tajiguas Landfill is a Class III Municipal Solid Waste Landfill and serves:
 - City of Santa Barbara
 - City of Goleta
 - City of Solvang
 - City of Buellton
 - Unincorporated County of Santa Barbara areas (South Coast, Santa Ynez and Cuyama Valleys)

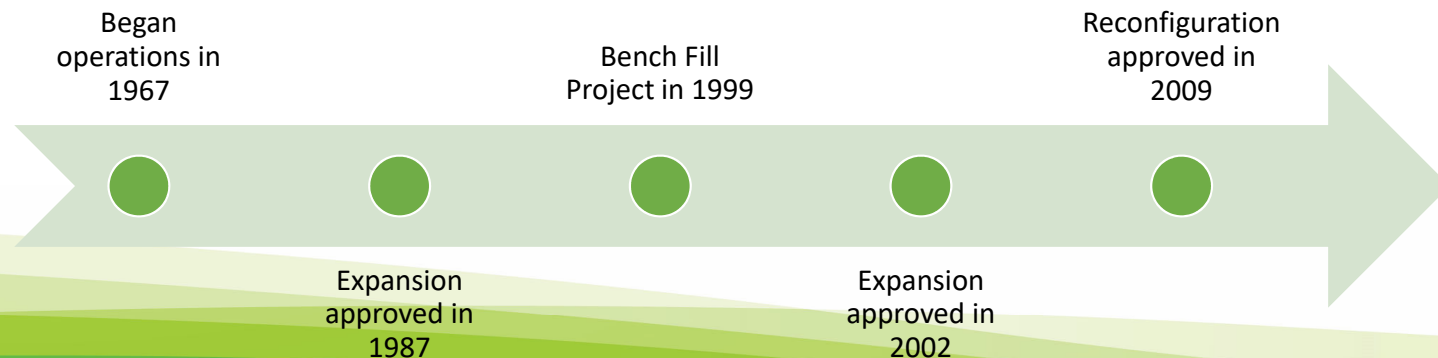


one
COUNTY
one
FUTURE



Tajiguas Landfill History

- The Tajiguas Landfill began operations in 1967
 - Landfill property comprises 497 acres
 - Permitted operational area of 357 acres and 118 acre waste footprint
 - Disposal capacity of 23.3 million cubic yards (mcy)



ReSource Center

- Tajiguas Resource Recovery Project approved in 2016 / 2017
 - Material Recovery Facility (MRF)
 - Anaerobic Digestion Facility (ADF)
 - Composting Management Unit (CMU)
- Built to comply with State regulations for removal of organics and reduce GHG emissions
- Pending completion of development and transition to full operations



Recent Developments

- Gore system implemented
- Agreement with MSB Investors, LLC fully terminated
- Team remains in place as “extra help” County employees
- County has taken over contracts with key subcontractors/operators
- Long term contracts expected to be in place this year



Factors Affecting Landfill Service Life

- Boundary delays initiating ReSource Center construction
- Delays completing development of ReSource Center
- More waste received than projected
- More bypass waste (waste not processed by MRF)



Project Objectives

- Regain Landfill service life
- Avoid the ratepayer burden of paying for debt service concurrent with cost for off-site hauling and disposal
- Maximize local disposal opportunities and avoid environmental impacts from off-site hauling and disposal
- Provide local facilities for an efficient, combined resource recovery and disposal operation

Tajiguas Landfill Capacity Increase Project

Overview

Proposed Project Scope

- Increase capacity by 6.1 million cubic yards
- Increase the maximum permitted height to 650 feet above mean sea level
- Increase the waste footprint by 14.25 acres of new lined area
- Provide capacity for disaster debris management
- Includes minor infrastructure and operational changes
- Located largely in previously disturbed areas, outside of Coastal Zone

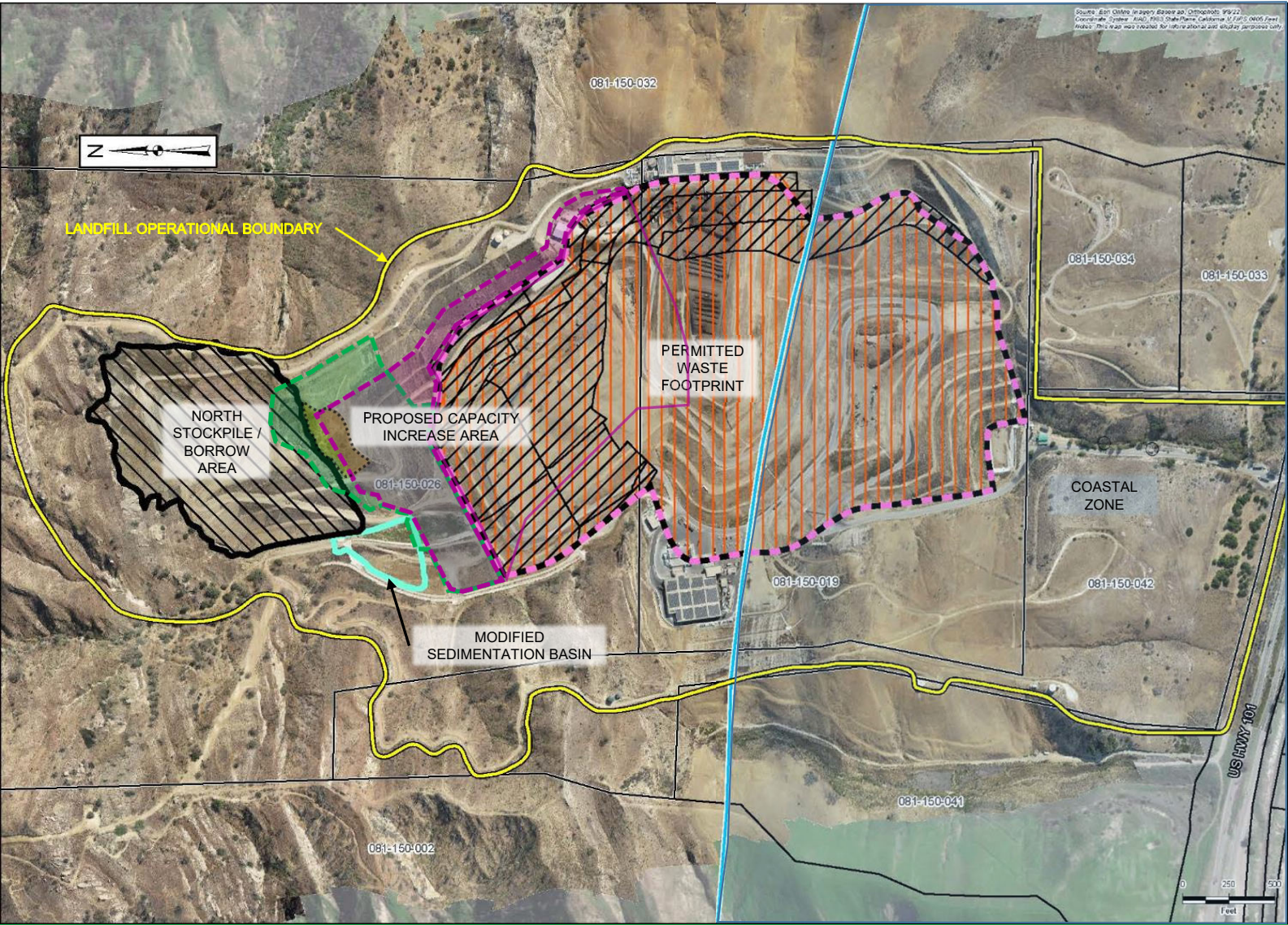






Photo Simulations

Currently Permitted Landfill at Closure



Capacity Increase Project at Closure



CEQA Review

PROPOSED FINAL
SUBSEQUENT ENVIRONMENTAL IMPACT REPORT
TAJIGUAS LANDFILL CAPACITY INCREASE PROJECT

Volume 1 (Subsequent EIR)
Santa Barbara County EIR No. 23EIR-00001
SCH No. 2023030563



LEAD AGENCY:



PREPARED BY:
Padre Associates, Inc.
March 2024

Public Review Process

- Notice of Preparation – Released March 23, 2023 for a 30-day comment period
 - Direct Mailing/Emailing
 - Posted at RRWMD website, Clerk of the Board, State Clearinghouse
 - Notice of Preparation Scoping meeting held April 10, 2023
- Notice of Availability – September 28, 2023 for a 45-day comment period
 - Direct Mailing/Emailing, ad in Independent
 - Posted at RRWMD website, Clerk of the Board, State Clearinghouse
 - Public meeting for Draft SEIR held on October 26, 2023
- Final Subsequent EIR and Certification

Public Comments Received

- Focused on issues related to odors and litter associated with the operation of the ReSource Center ADF and CMU
- Concerns with expanding the Tajiguas Landfill while ReSource Center issues unresolved
- Biological impacts
- Consideration of enhanced source separation and waste reduction alternatives

Subsequent EIR Topic Areas

- Aesthetics/Visual Resources
- Air Quality/Greenhouse Gas Emissions
- Biological Resources
- Cultural Resources
- Geologic Processes
- Hazards/Hazardous Materials
- Land Use/Recreation
- Nuisance
- Noise
- Transportation/Circulation
- Water Resources/Flooding

Significant and Unavoidable Impacts

- Greenhouse gas emissions generated by construction equipment and decomposition of the communities' municipal solid waste
 - Construction-related GHG Emissions Reduction Measures
 - Landfill complies with all applicable regulations to reduce, collect and manage GHG emissions.
- Greenhouse gas impact due to the extension of Landfill life

Significant and Unavoidable Impacts

- Loss of suitable Crotch's bumblebee habitat and potential impacts to individuals or nests
 - ✓ Crotch's Bumblebee Training and Construction Phasing
 - ✓ Crotch's Bumblebee Habitat Replacement
 - ✓ Crotch's Bumblebee Habitat Usage Study
- Biological Impact due to the extension of Landfill life



Significant but Mitigable Impacts

- Other significant but mitigable impacts would include:
 - Impacts to sensitive plants
 - Potential impacts to sensitive wildlife and nesting birds
 - Potential exposure to contaminated soils
 - Noise from blasting
 - Potential damage to previously unrecorded archaeological resources
 - Potential Land Use Conflicts
- Mitigation Measures have been identified and included in the Mitigation Monitoring Program to reduce these impacts

Project Alternatives

A: No Project Alternative

B: Vertical Capacity Increase

C: Horizontal Increase

D: Chiquita Canyon Landfill

- Up to 34 trucks/day with a round trip distance of up to 210 miles

E: Chiquita Canyon Landfill and City of Santa Maria Landfills

- Up to 34 trucks/day with a round trip distance of up to 148 miles



Alternatives Analysis

- Alternative B is identified as the environmentally superior alternative when compared to the other alternatives
 - Off-site waste export and disposal would be required ~7 years before debt service is complete
 - Off-site waste export and disposal would increase vehicle miles traveled and air pollutant and GHG emissions
- The Proposed Project with mitigation would reduce impacts to the maximum extent feasible and meet operational, engineering and financial objectives associated with continued management and disposal of the community's waste

Project Benefits/Overriding Considerations

- Provides a long-term waste management plan (to approximately 2038)
- Provides the most cost-effective means of managing the region's waste
- Meets the mandate of the California Integrated Waste Management Act
- Provides disposal capacity for disaster-related debris

Project Benefits and Overriding Considerations

- Extends/increases the implementation of advanced waste recovery technologies
- Increases the efficiency of waste burial through additional settlement of existing buried waste
- Contributes to the local economy
- Provides continued employment of Landfill staff in a safe and humane work environment

Financial Considerations

- Export disposal costs are 8.4 times greater than the Proposed Project
 - \$1.6 million equivalent annual capital expense for the Proposed Project, based on an extended service life of 12.75 years
 - \$13.4 million annual operational expense to export to the Chiquita Canyon Landfill (Alternative D)
 - \$13.1 million annual operational expense to export to the Chiquita Canyon and Santa Maria Landfills (Alternative E)
- One-time Proposed Project cost of \$20.4M would require a one-time increase to tipping fee of 7.4%
- Total export disposal cost of \$170M would require a substantial increase to tipping fee of 44.2%

Staff Recommendations

- That the Board of Supervisors:
 - Certify the Subsequent EIR
 - Certify that the Board has reviewed and considered the EIR and comments
 - Approve and make the required CEQA Findings and Adopt the Statement of Overriding Considerations
 - Approve the Tajiguas Landfill Capacity Increase Project
 - Adopt the Mitigation Monitoring and Reporting Program
 - Direct staff to acquire other required permits
 - Authorize staff to advertise for construction bids

Thank you!



one COUNTY | *one* FUTURE



SANTA BARBARA COUNTY

Innovative Environmental Solutions

www.LessIsMore.org