

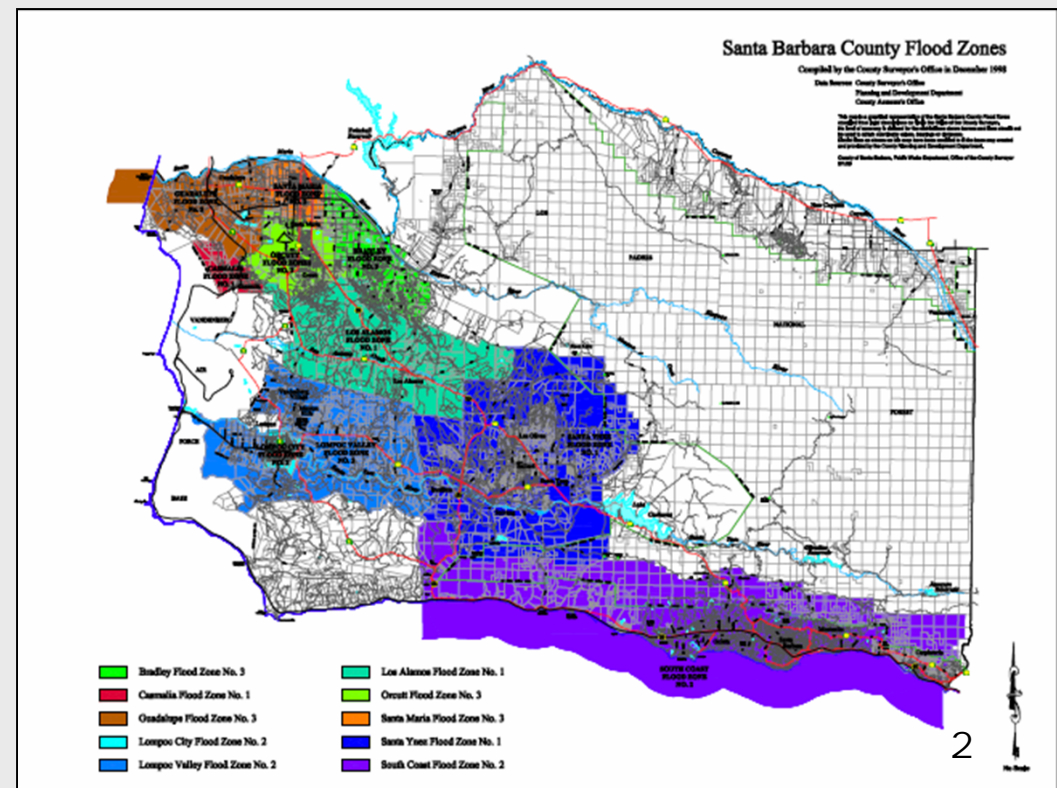


Santa Barbara County Flood Control District

**Benefit Assessment Update
Board of Supervisors Meeting
June 19, 2012**

Flood Control Benefit Assessments

- Voter Approved Assessments
- Assessment Approved with an Annual CPI Adjustment to Preserve Funding Levels
- Proposed Increase 2.2% for FY 2012-13



Proposed Benefit Assessment Rates FY 2012 - 2013

	Group A		Group B		Group C		Group D		Group E	
	FY 2012-2013		FY 2012-2013		FY 2012-2013		FY 2012-2013		FY 2012-2013	
	\$/Ac	Min \$ Assmt	\$/Ac	Min \$ Assmt	\$/Ac ¹ (over 0.3 Ac only)	Min \$ Assmt	\$/Ac	Min \$ Assmt	\$/Ac	Min \$ Assmt
Bradley #3	\$39.81	\$11.95	\$29.85	\$8.96		\$6.01	\$1.49	\$0.44	\$0.14	\$0.04
Guadalupe #3	\$21.08	\$6.32	\$15.81	\$4.75		\$3.17	\$0.80	\$0.24	\$0.08	\$0.02
Lompoc City #2	\$88.92	\$26.68	\$66.68	\$20.00		\$13.34	\$3.35	\$1.00	\$0.32	\$0.09
Lompoc Valley #2	\$34.73	\$10.41	\$26.03	\$7.80		\$5.19	\$1.30	\$0.39	\$0.13	\$0.03
Los Alamos #1	\$44.15	\$13.25	\$33.13	\$9.93		\$6.62	\$1.65	\$0.49	\$0.16	\$0.04
Orcutt #3	\$26.46	\$7.95	\$19.84	\$5.96		\$3.98	\$0.99	\$0.30	\$0.10	\$0.03
Santa Maria #3	\$84.66	\$25.40	\$63.50	\$19.10		\$12.69	\$3.18	\$0.96	\$0.30	\$0.09
SMR Levee	\$22.84	\$6.86	\$17.13	\$5.14		\$3.44	\$0.85	\$0.27	\$0.09	\$0.02
SantaYnez #1	\$19.51	\$5.86	\$14.63	\$4.39		\$2.92	\$0.72	\$0.22	\$0.08	\$0.02
South Coast #2	\$148.60	\$44.58	\$111.45	\$33.43		\$22.29	\$5.57	\$1.67	\$0.55	\$0.16

Recommendations



- Approval of Items A, B, and C
 - First Reading

- Return July 10, 2012 for
 - Second Reading and Final Adoption