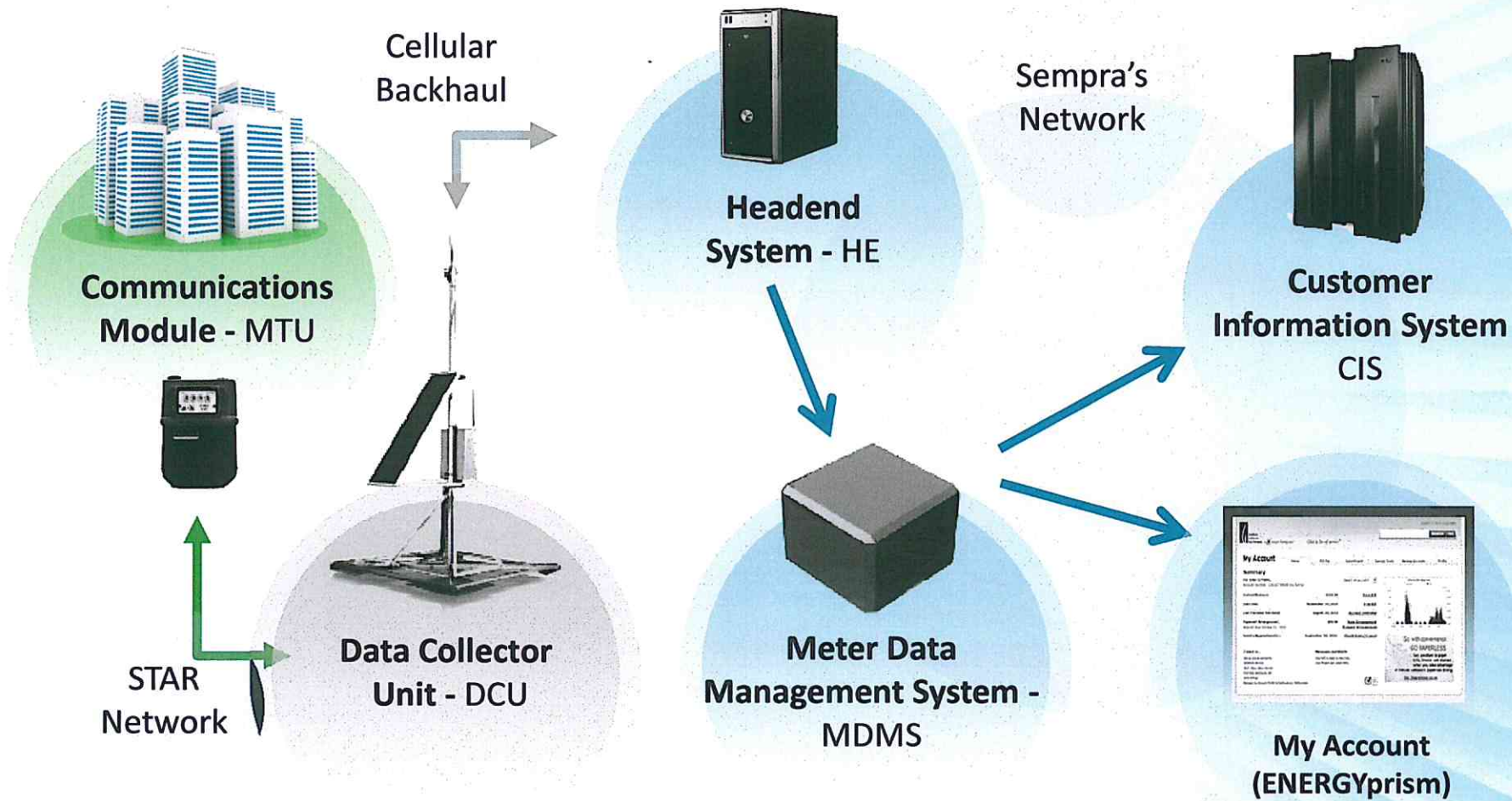
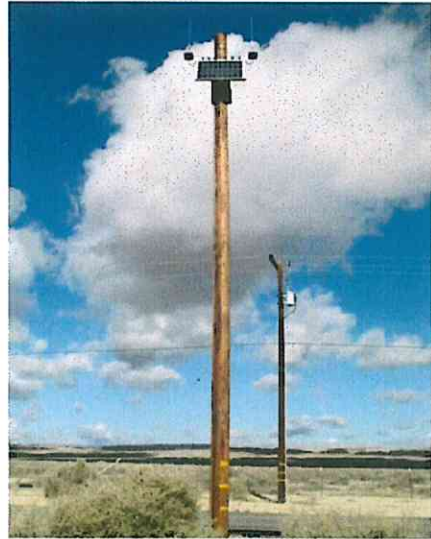


Advanced Meter Infrastructure



Pole & Installation Types

Wood



Concrete



Steel



Attachment



ADVANCED METER

SANTA BARBARA COUNTY

5/4/2014



Southern
California
Gas Company



A Sempra Energy utility®

Glad to be of service.®

What is the Advanced Meter Project?

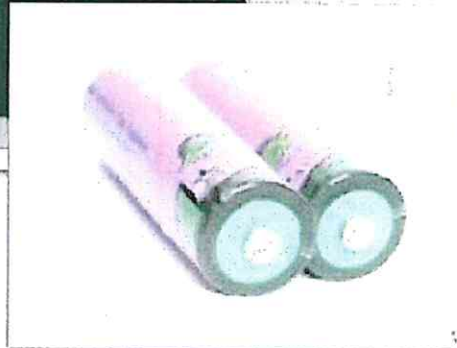
- California Public Utilities Commission (CPUC) decision received in April 2010 authorizing \$1.05 billion to upgrade approximately 6 million existing natural gas meters with a communication device by 2017
- Automatically reads and securely transmits hourly gas usage information on a “next day” basis
- Provides more frequent and detailed information to help customers better manage energy use and costs
- SoCalGas employees will perform installations
- Advanced meter installation began in October 2012



PHOTOS FOR DISCUSSION PURPOSES ONLY

How Does It Work?

Gas usage is still recorded in the traditional way, it's a new communication device that transmits the information electronically



- Does not change the functionality of the gas meter; No remote connect / disconnect capabilities
- Device is **off** most of the time
- Securely transmits 12 hours of data 4 times per day to a Data Collector Unit (total “on” time is less than 2 minutes per year)
- **Battery-powered**
- Does not communicate with other meters
- Does not communicate with appliances in the home



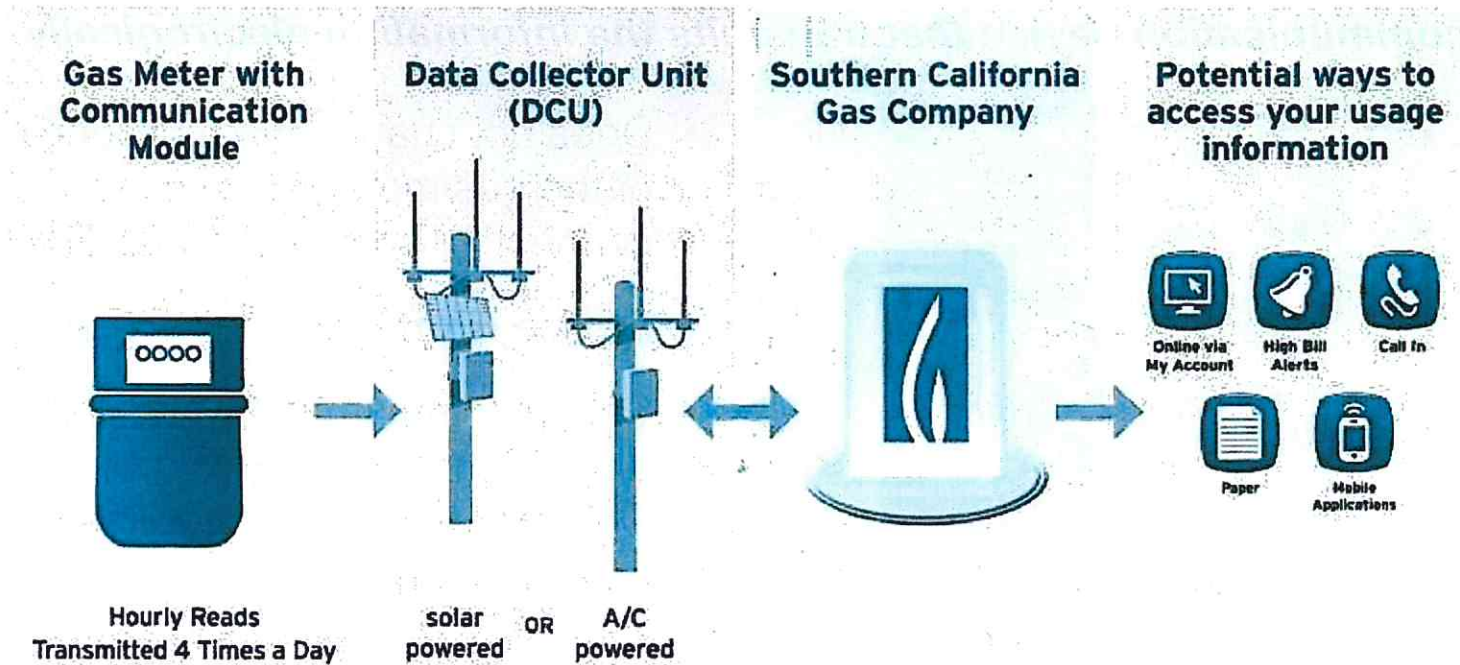
Southern
California
Gas Company



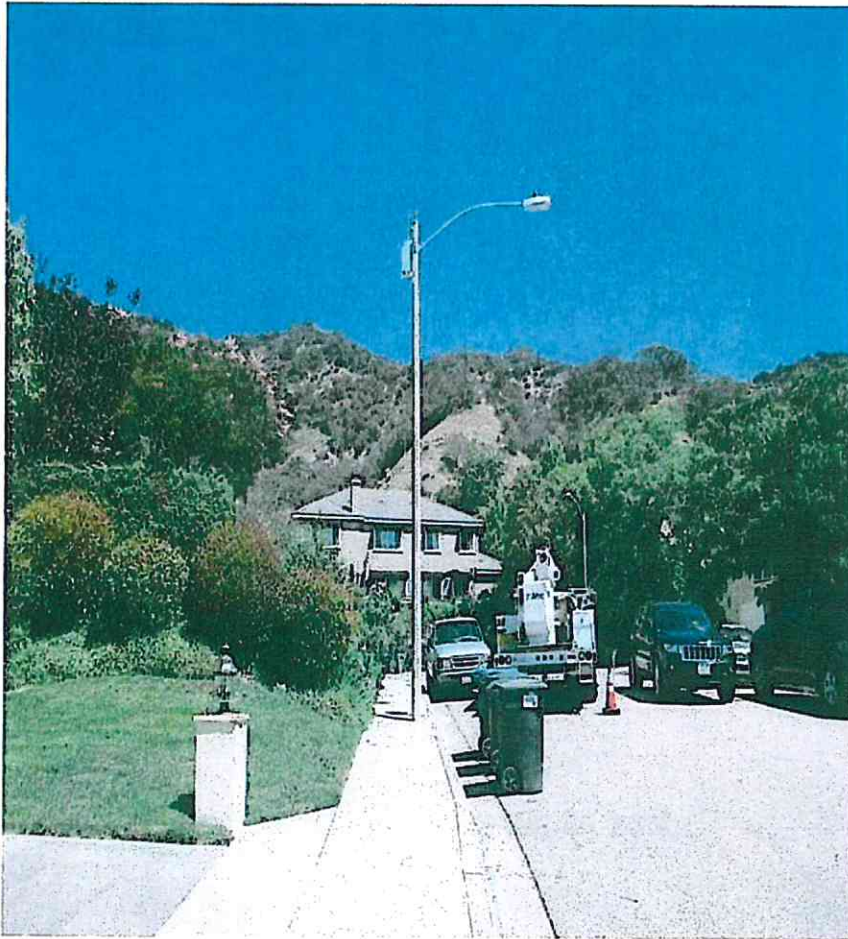
A Sempra Energy utility[®]

Glad to be of service.™

How is the Information Transmitted?



About the Network – Data Collection Units (DCUs)



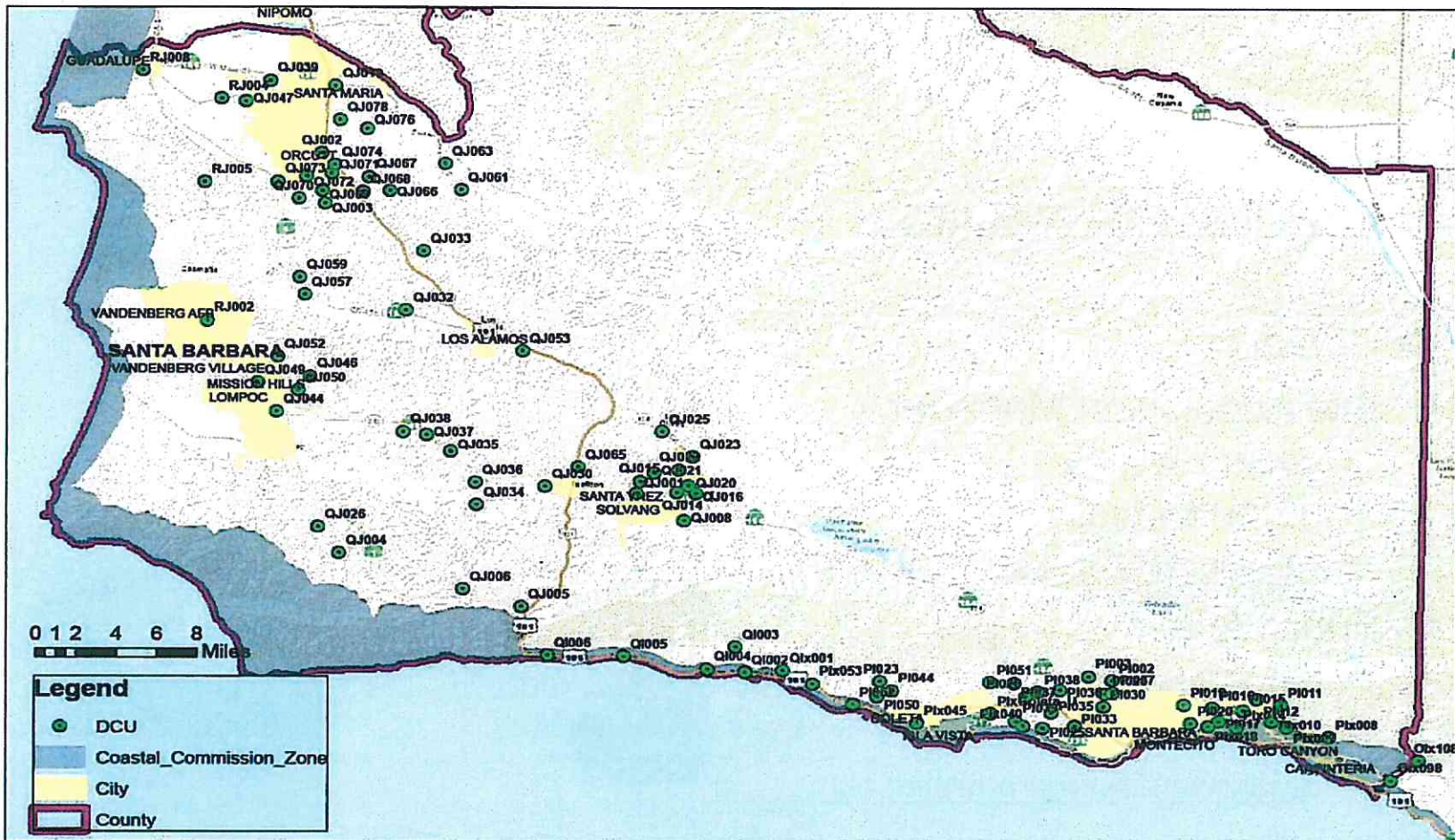
- Installing approximately 4,000 DCUs throughout SoCalGas' service territory
- Mostly pole mounted
- Antennas mounted 24 feet or higher (licensed 450 MHz frequency)
- A/C or Solar Powered
- 21.5" H x 13.6" W x 8.25" D
- Maximum DCU weight is 55 lbs
- Built-in Redundancy: Advanced Meters will communicate with two to three DCUs

Advanced Meter Status

- Over 2,300 DCUs installed throughout SCG service territory to date
- ~100 DCUs to be installed in Santa Barbara County by December 31, 2014
- Over 1 million gas meters upgraded throughout SCG service territory to date
- ~73,000 SCG gas meters to be upgraded in Santa Barbara starting in February 2016



DCUs in Santa Barbara County



Contact Information

- To learn more about the project, visit:
socalgas.com/advanced

Or Contact:

- Site Acquisition Manager
 - **Scott Loveless**
 - (213) 369-1153
 - sloveless@semprautilities.com
- Public Affairs Manager
 - **Tim Mahoney**
 - (805) 681-7930
 - tmahoney@semprautilities.com

