



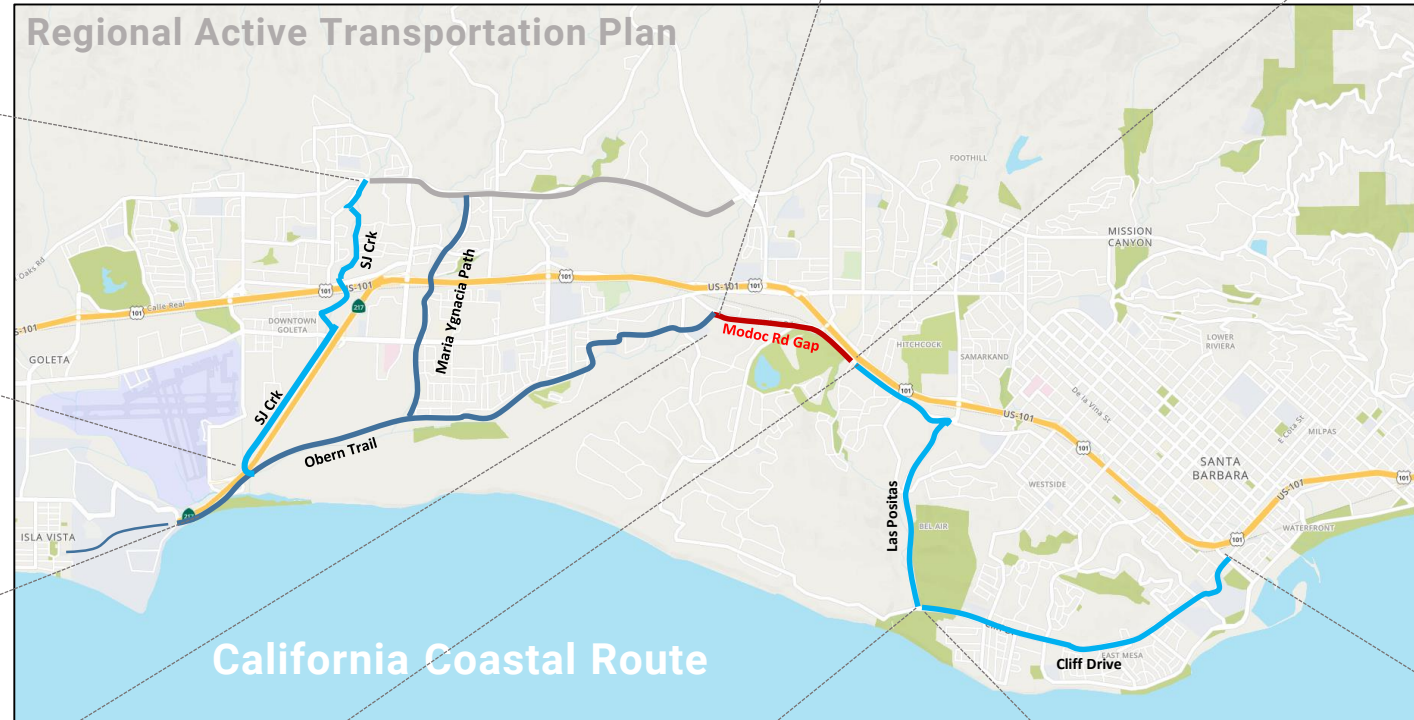
MODOC RD MULTI-USE PATH – PHASE 2



Context: A partnership to create a regional network

Modoc Multiuse Path
County of Santa Barbara
\$8M
2022/2023

San Jose Creek Bike Path
City of Goleta
\$18M
2023



Oborn Trail
County of SB
\$1M+ in rehabilitation
Completed

Modoc Las Positas
City of Santa Barbara
\$18M
Completed

Cliff Drive to Downtown
City of Santa Barbara
\$27M



THE MODOC MULTIUSE PATH PROJECT

Phase 1: City Limits to Via Senda (2022)

Phase 2: Via Senda to Obern Trail (2023)

State ATP Funding: \$5.4M



TIMELINE

2007-2020

Modoc Path included in regional and local planning documents

2018

County awarded a grant to construct the path

2022

Phase 1: City of SB to Via Senda in construction

Summer 2022

Phase 2 Environmental documents under way

Fall/Winter 2022

Phase 2 Detailed Design

Fall 2023

Phase 2 Construction

Status



- Preliminary Engineering ✓
- Environmental Document ✓
- Detailed Design and Right of Way
- Construction

→ approval required before funding available for the next phase

Preliminary Engineering

- Evaluation of Alternatives
- Preferred Alignment

Environmental Document – Mitigated Negative Declaration

- Analyzes *maximum* project impacts
- Determines *minimum* mitigation requirements
- Circulated for public comment
- First Draft: released 5/14/22
- Modified based on community feedback
- Revised Draft: released 9/13/22

COUNTY OF SANTA BARBARA

Department of Public Works, Transportation

Draft Revised Mitigated Negative Declaration

Modoc Road Multi-Use Path

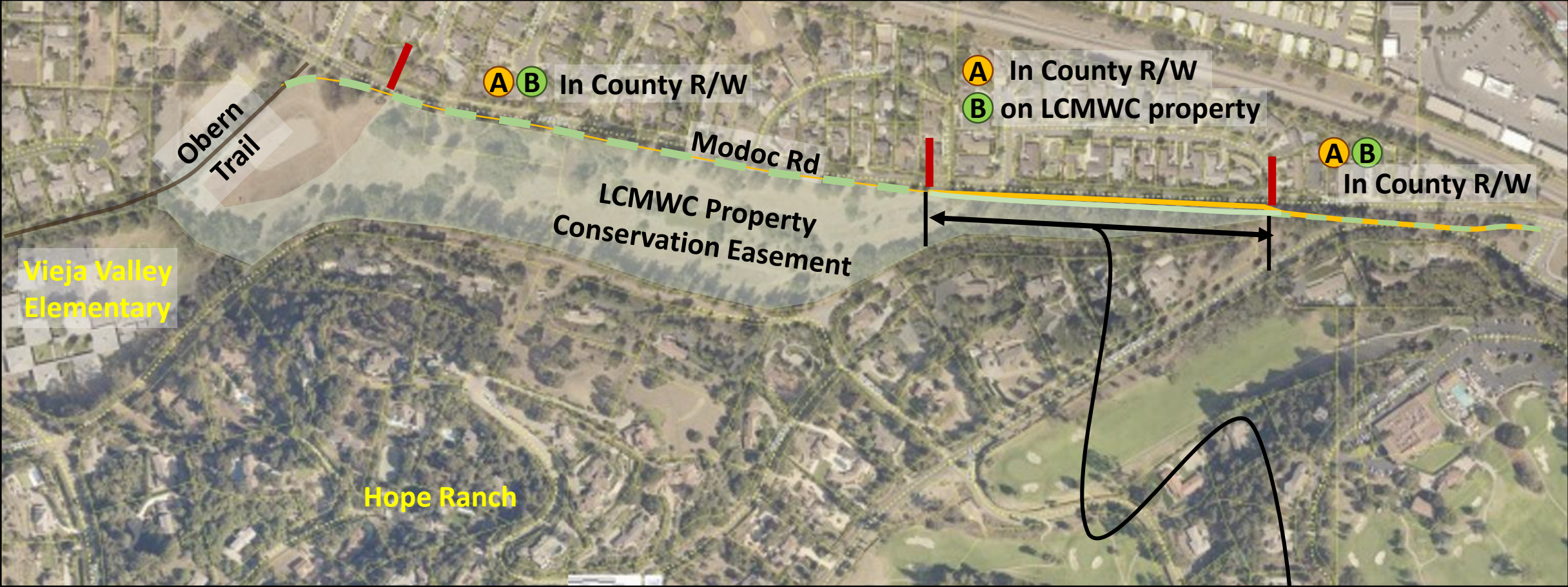
22NGD-00000-00003

State Clearinghouse # 2022090230

September 8, 2022



Alignments



A: entirely in road right of way
B: middle segment on La Cumbre Water Company (LCMWC) property

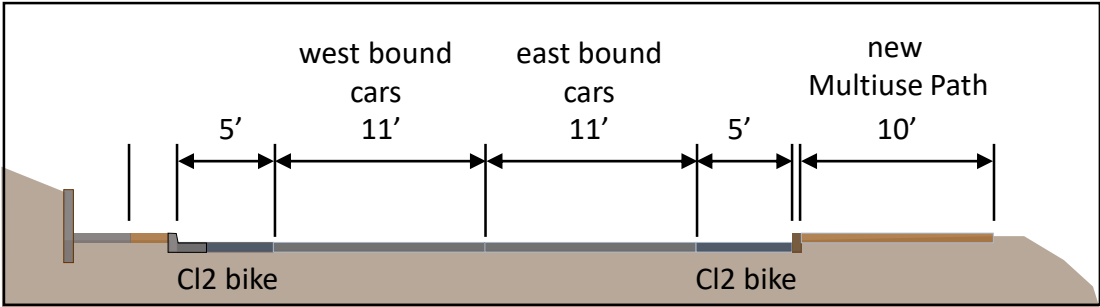
Alignments



Alignments



Alignments



Alignments



Existing Conditions



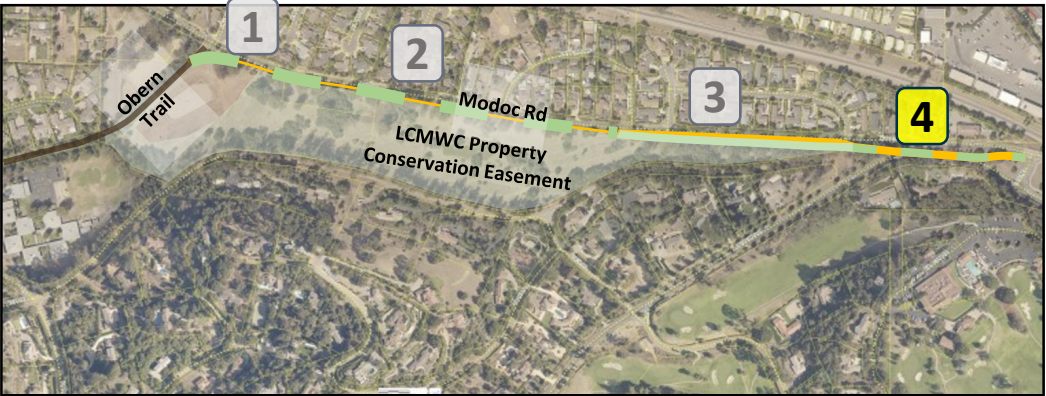
Alternative A - Entirely in County Right of Way



Alternative B (preferred) – Segment on Modoc Preserve



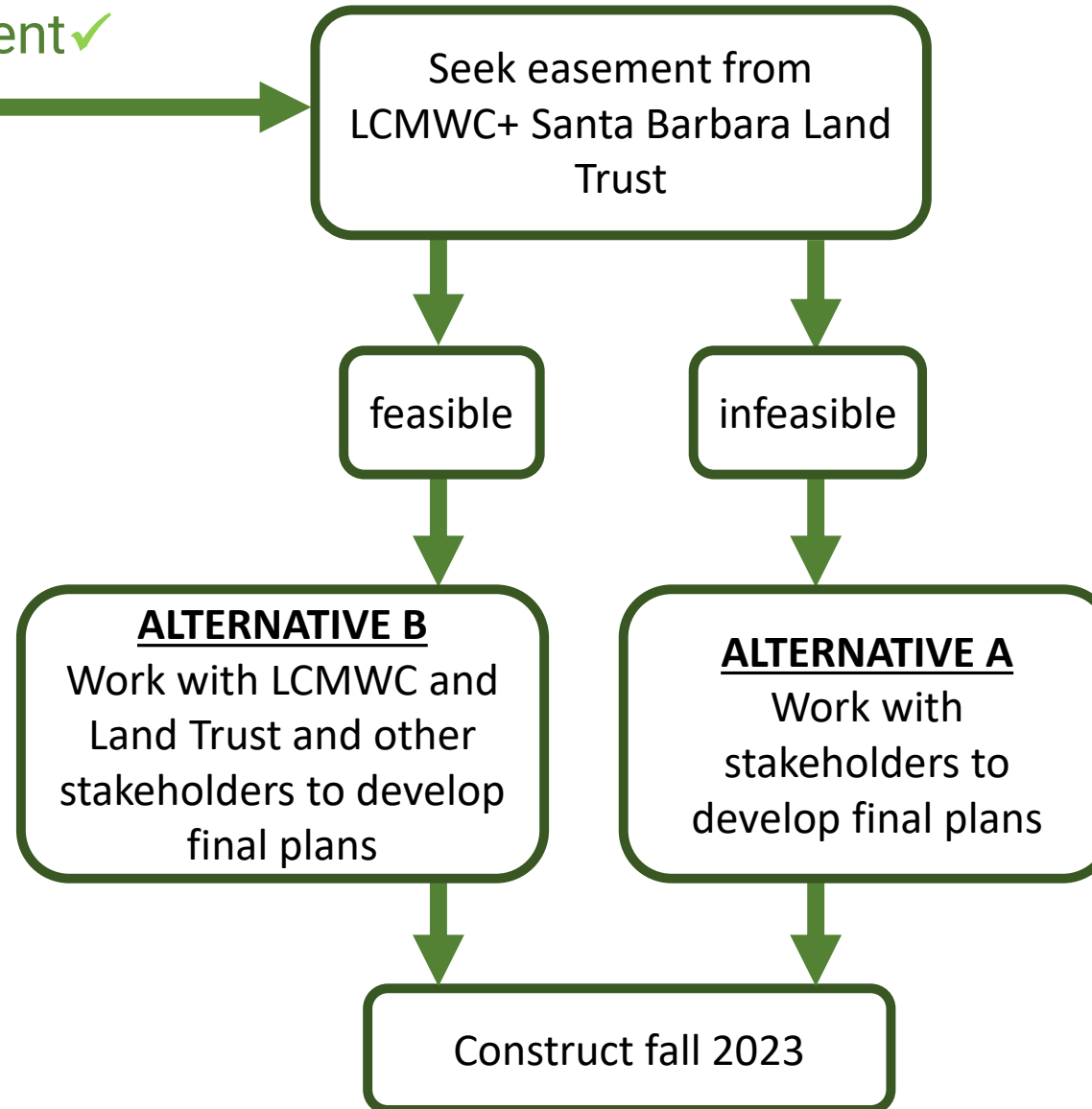
Alignments



Next Steps

- Preliminary Engineering ✓
- Environmental Document ✓
- **Detailed Design** →
- Construction

LCMWC + Santa Barbara Land Trust would determine within their organizations if they approve



Stakeholder Collaboration

Design Considerations

Users

- ADA Complaint
- Pedestrians
- Bicycles – all levels of experience
- Motorized vehicles prohibited
- Equestrians (if Alt B)*
- maintain existing trail network (Alt B)*

Materials

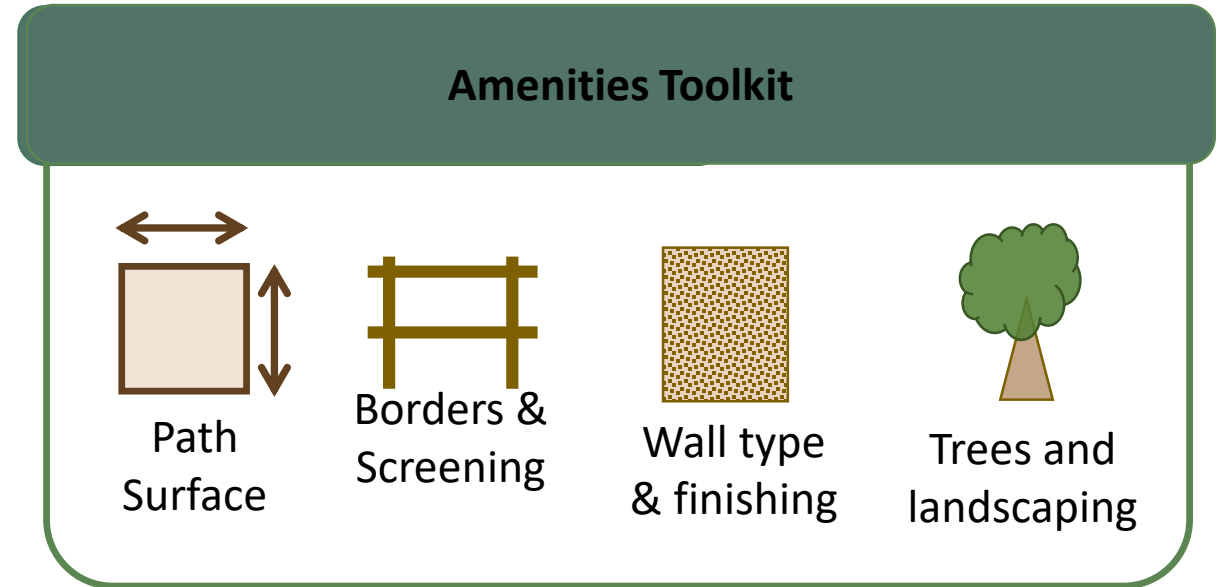
- low retaining walls and curbs
- borders/screening/buffers (Alt B)*
- railing and barriers (Alt A+B)*
- path surface (permeable asphalt or concrete)

Planting

- work with preserve/LCMWC/Land Trust/community to enhance restoration efforts (Alt B)*
- work with stakeholders and community (Alt A)

Additional Safety Enhancements

- crossings from neighborhood points
- traffic calming
- speed studies



*Alternative B would allow for enhancements to the Conservation Easement area consistent with their goals for the preserve

Recommendations

- a) Certify that the Board has reviewed and considered the information contained in the Final Mitigated Negative Declaration (22NGD-00000-00003) and make the California Environmental Quality Act (CEQA) Findings required to adopt the Final Mitigated Negative Declaration (22NGD-00000-00003);
- b) Adopt the Final Mitigated Negative Declaration (22NGD-00000-00003) and adopt the Mitigation Monitoring Plan included in the Final Mitigated Negative Declaration (22NGD-00000-00003);
- c) Approve the Project and authorize the Director of Public Works to advertise for bids to construct Phase II of the Modoc Multi-use Trail; Project No. 862416; Second Supervisorial District; and
- d) Authorize the Director of Public Works to proceed with right-of-way acquisition negotiations, including in fee, right-of-way easements or licenses, and/or temporary construction easements, as required for the construction of the Modoc Road Bike Path.
- e) Approve a Budget Revision Request No. 0008603. Increase appropriations of \$500,000 in General County Programs General Fund for Other Financing Uses funded by release of Committed Cannabis fund balance. Establish appropriations of \$500,000 in Public Works Roads Capital Infrastructure Fund for Services and Supplies funded by an operating transfer from the General Fund in the amount of \$500,000.



MODOC RD MULTI-USE PATH – PHASE 2

