



ADVANCEDmeter

SANTA BARBARA COUNTY

APRIL 2016

Summary

- As in over 200 cities and counties in SoCal Gas service territory, we would like install our Advanced Meter network pursuant to a ministerial process in the public right of way as typical under our existing franchise agreement.
- Because the CPUC has exclusive jurisdiction and discretion over the implementation of region-wide utility systems and improvements thereto a ministerial approval process is appropriate.
- By virtue of its franchise agreement with the County, SoCal Gas already has contractual rights to install its Advanced Meter network in the public right of way.
- With the Advanced Meter Project coming to a close, we are now at the point that we can no longer delay network installation in your county.





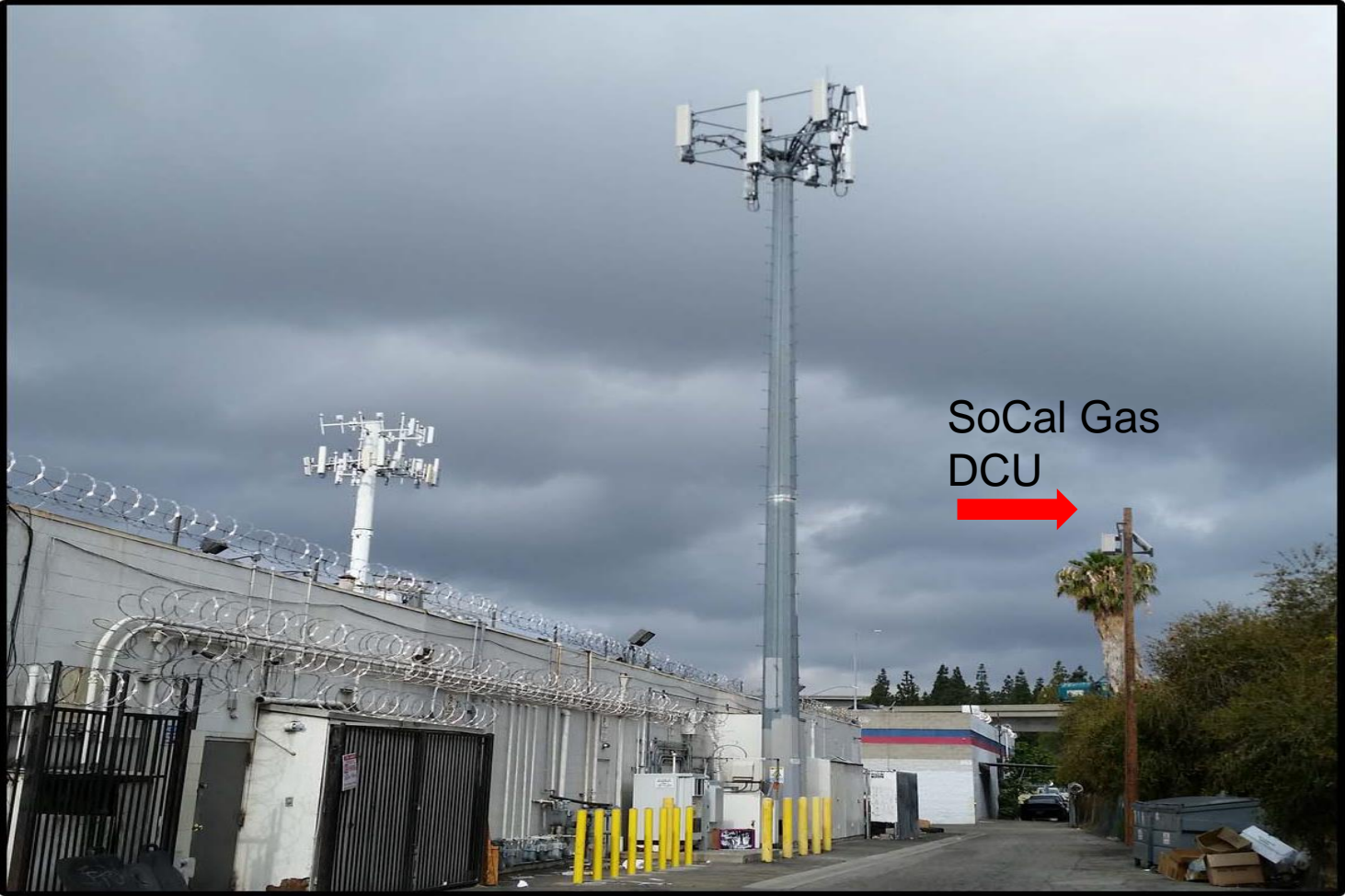








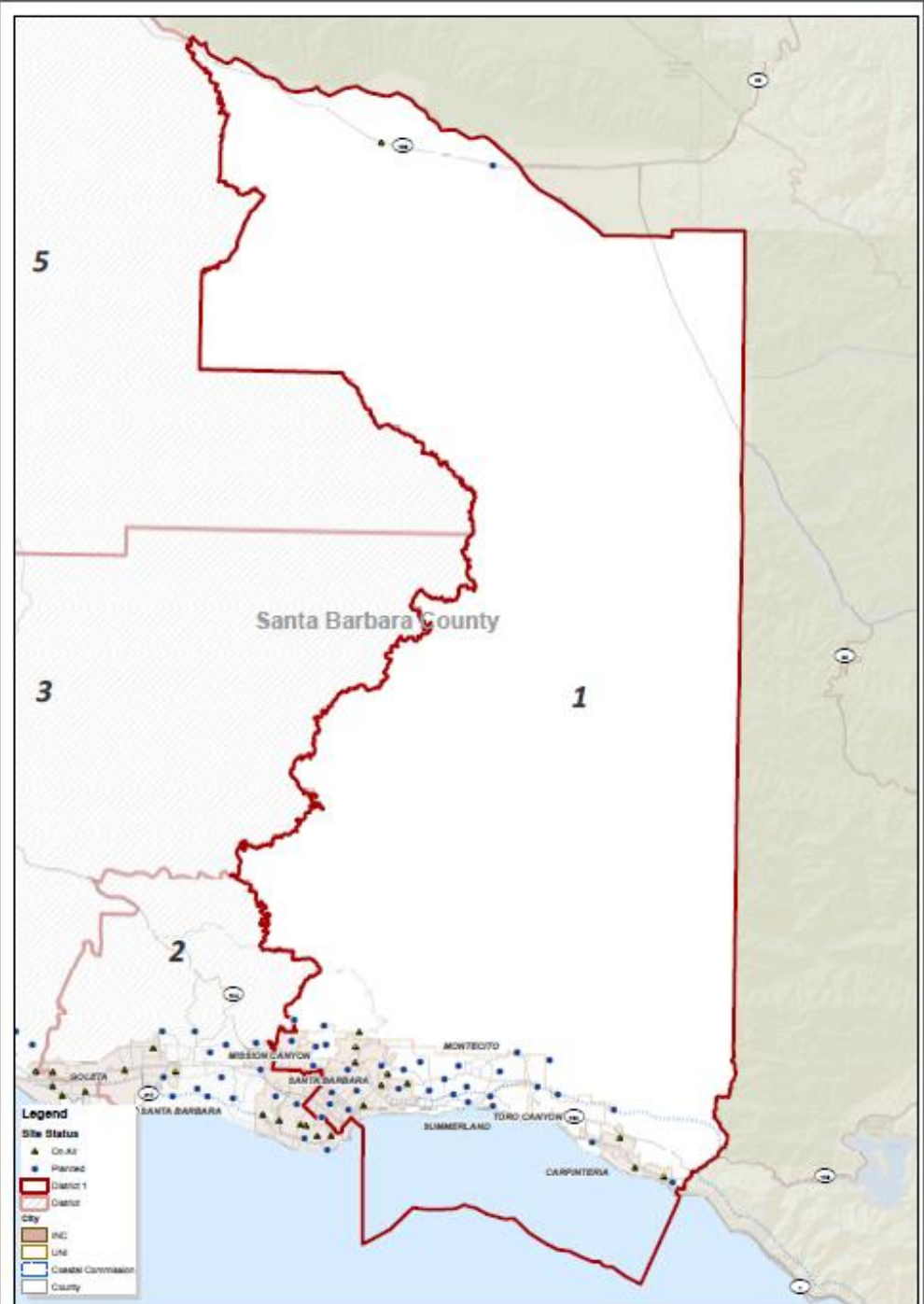
Photo Simulation Comparing DCU with Cell Site

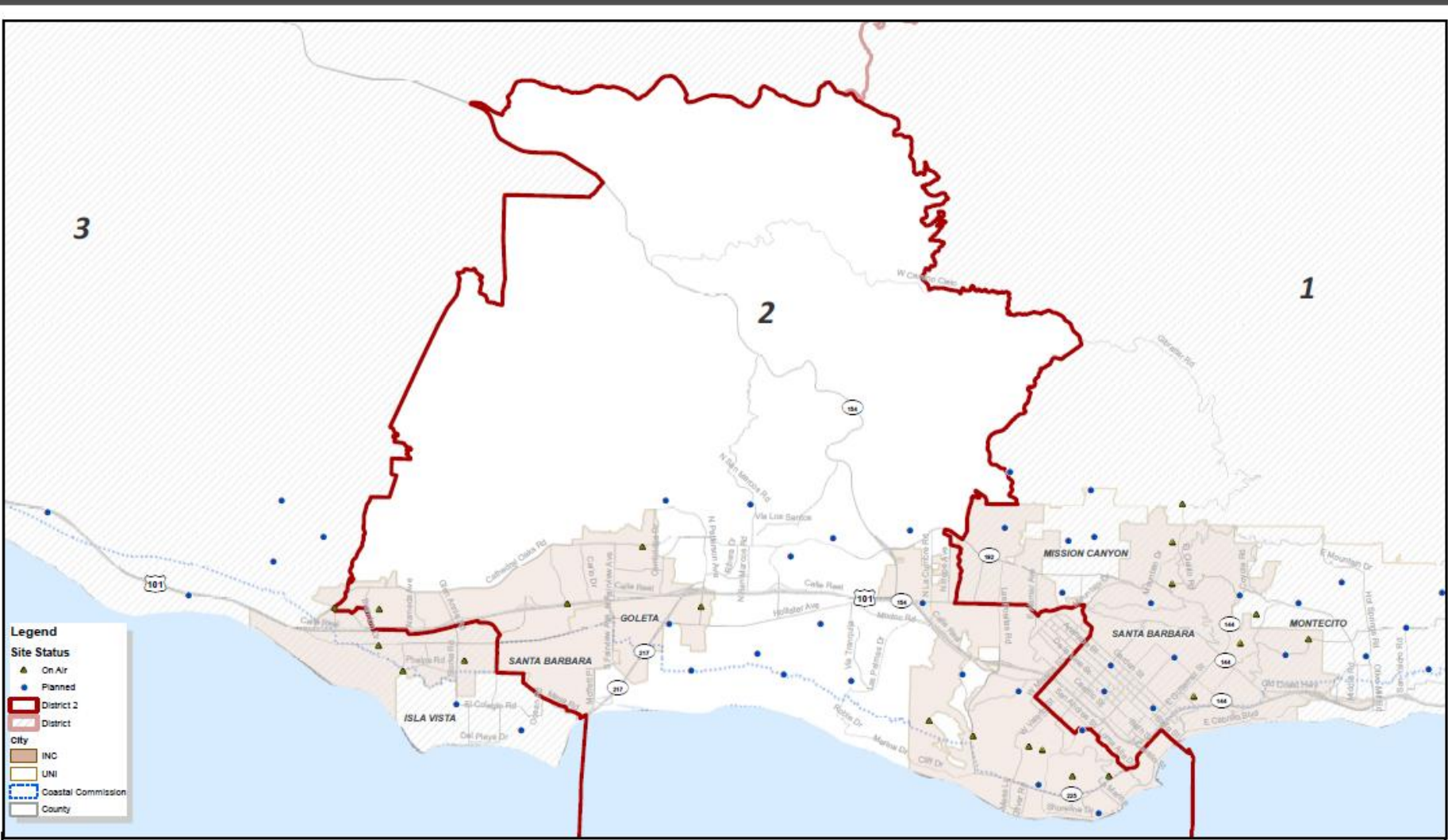


Project Status in Santa Barbara County

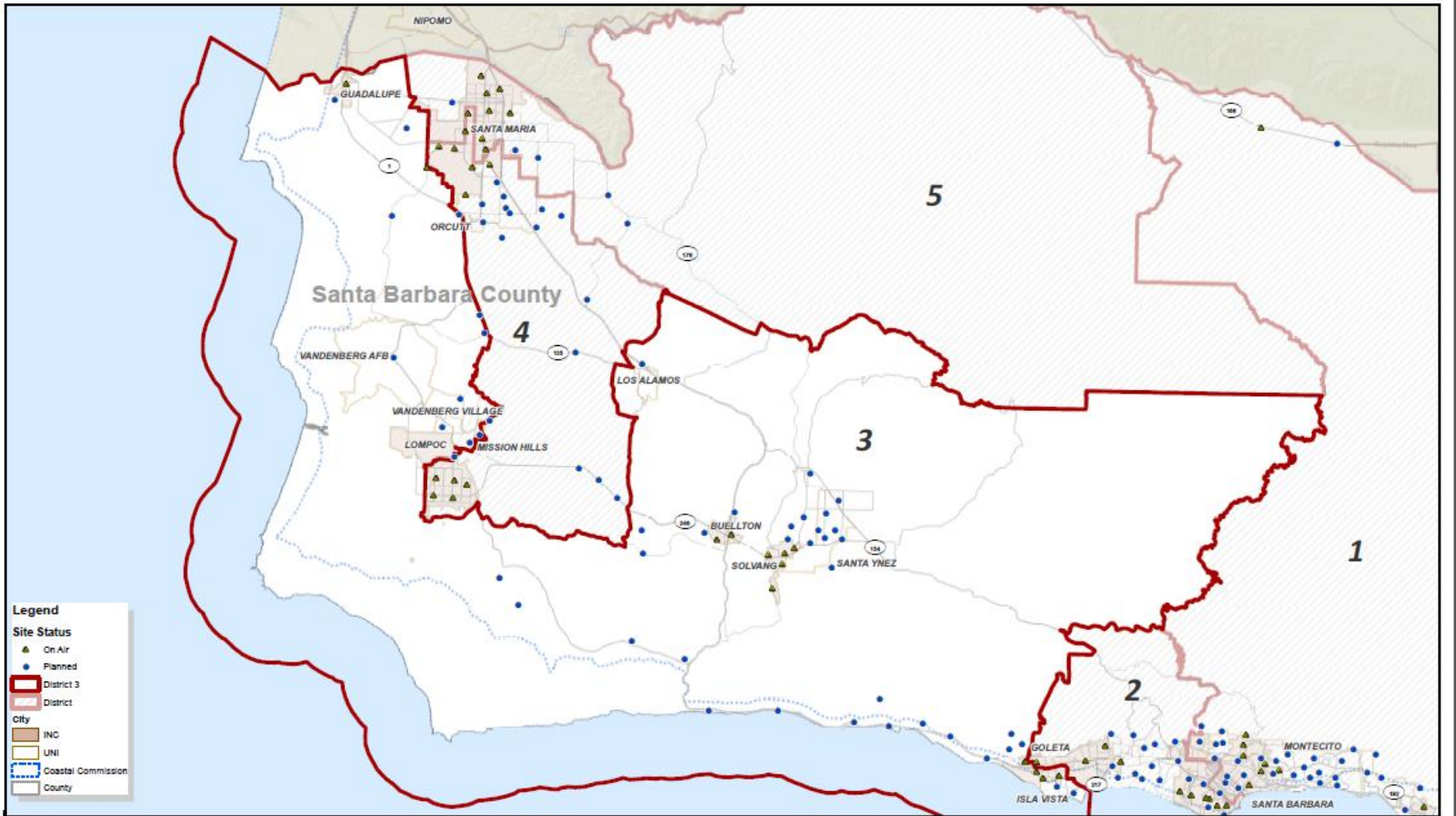
- 35,000 meters total in County with 13,597 advanced meters installed.
- 105 DCUs (2% of the total network) required to be installed in the County.
- 34 DCUs currently installed in incorporated cities in the County including:
 - Carpinteria (4), All Coastal Zone
 - Goleta (8), 1 in Coastal Zone
 - Lompoc (3)
 - Santa Maria (11)
 - Buellton (2)
 - Solvang (5)
 - 12 DCUs in city of Santa Barbara
- 10 DCUs within the coastal zone: County Planning to allow SoCal Gas to proceed with coastal development permits (discretionary pursuant to California Coastal Act).
- 55 pressure monitors and 10 Pipeline Safety Enhancement Plan (PSEP) valves in the County.

District 1 - Salud Carbajal

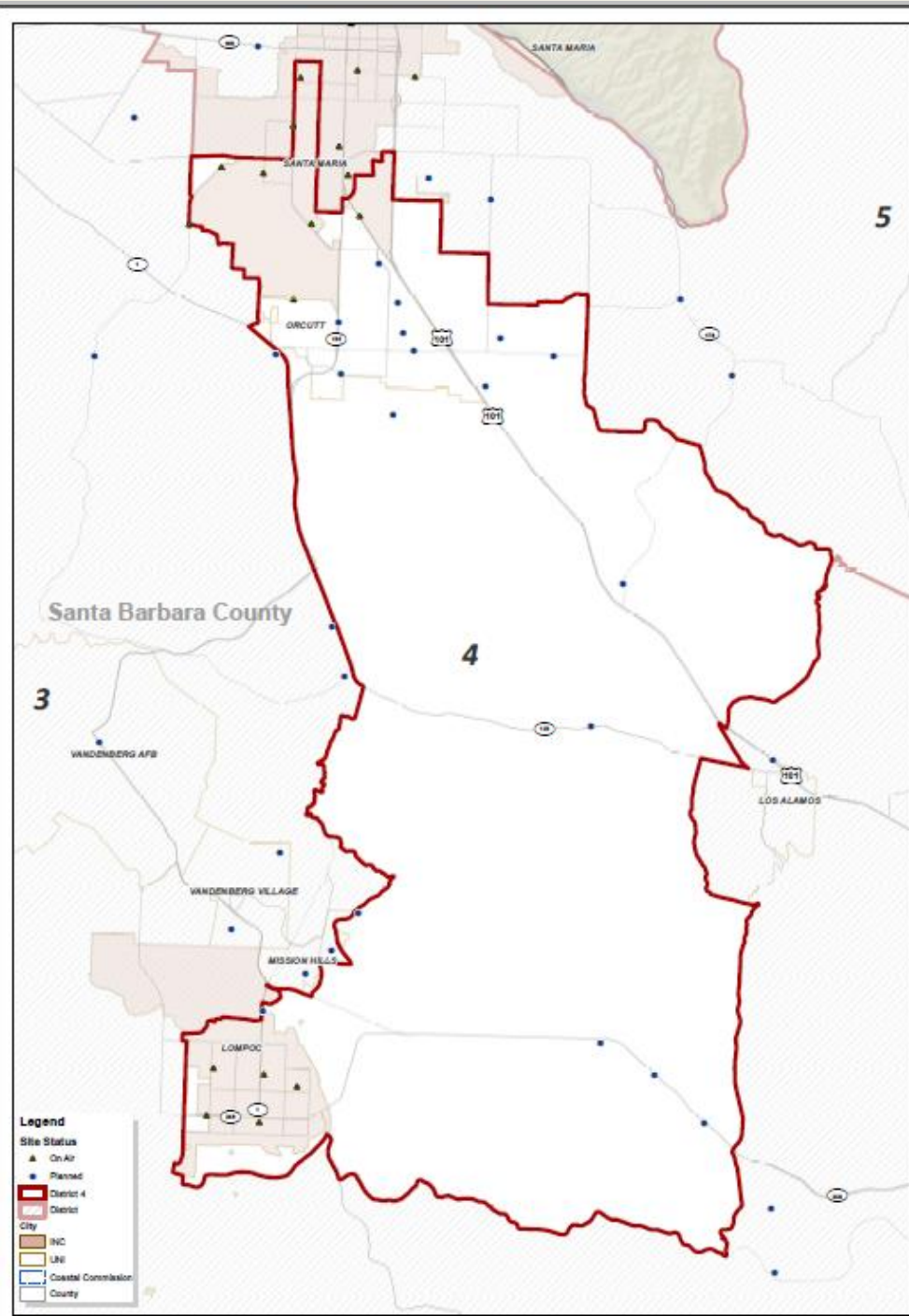




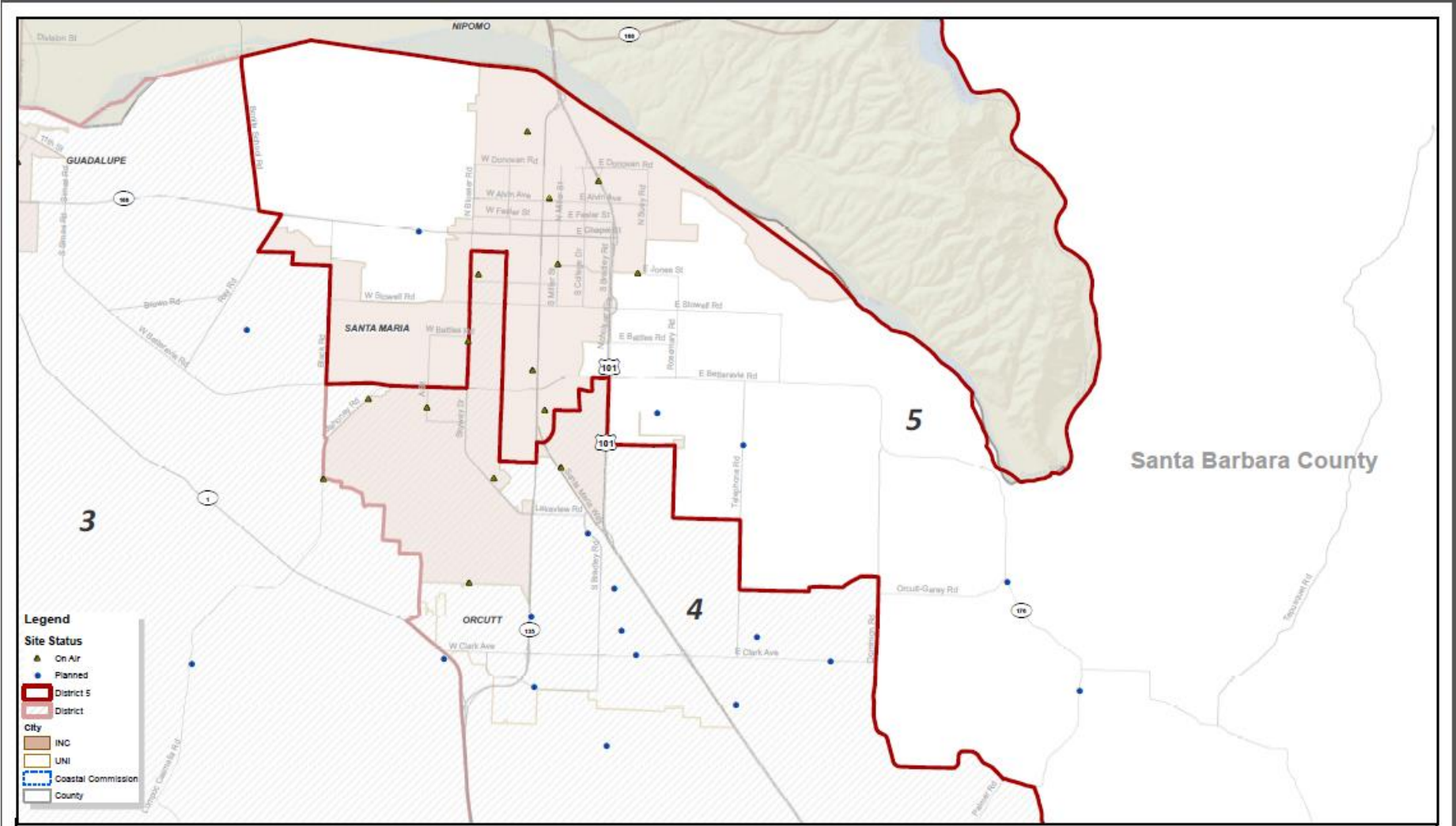
District 3 - Doreen Farr



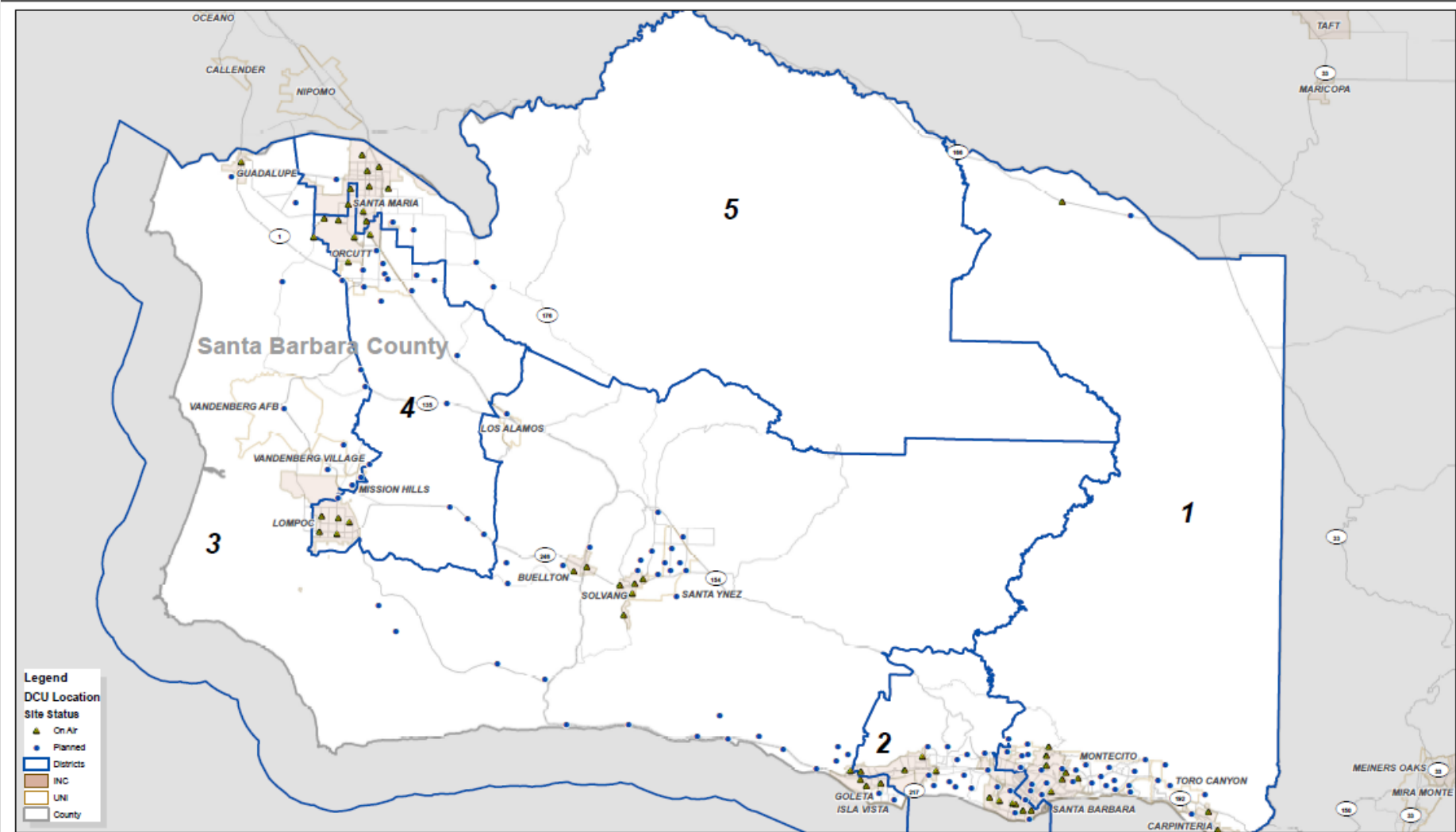
District 4 - Peter Adam



District 5 - Steve Lavagnino



Santa Barbara County Data Collector Units



Safety is a Top Priority

- Safety is at the heart of everything SoCal Gas does in the public right of way, including the installation of DCUs as part of the Advanced Meter project.
- Additional customer and safety benefits enabled by the Advanced Meter system include quicker detection of higher-than-usual gas usage allowing earlier investigation of possible problems as well as improved monitoring of gas pressure throughout the gas system.
 - Possible to detect abnormal gas usage in days rather than weeks
 - Faster identification of abnormally high gas usage will allow SoCal Gas to investigate these situations earlier than it has historically
 - Earlier discovery of abnormally high gas usage can reduce the financial burden on customers, while at the same time saving energy and improving air quality
- SoCal Gas, with an outstanding safety record system-wide for more than 140 years, is taking advantage of new technologies like advanced metering to ensure the continued safe and reliable delivery of natural gas to its customers.

Shared Network Opportunities for Water Meters

Shared Network for Water

- SoCal Gas is currently piloting a network sharing service which allows water utilities to transmit their meter data over the SoCal Gas Advanced Meter network
- Water usage data is sent through SoCal Gas DCUs, with water data separated from gas data at the SoCal Gas Headend and sent to an Aclara hosted server
 - Water utilities have access to a web interface on the hosted server to view the water data and run reports for things like leak detection
 - Interfaces to other platforms like consumer engagement are set up from the hosted server. Water utilities install and maintain their own meters

Water Utilities throughout Southern California have expressed interested in the shared network opportunity, which enables water utilities and their customers to have visibility into hourly water use, empowering customers to conserve more and utilities to achieve significant operational benefits.

Shared Network Pilot Participants

- Los Angeles Department of Water & Power (525 meters), City of Santa Monica (50 meters), San Gabriel Valley Water Company (500 meters), and more.

Permitting Process

- SoCal Gas has secured ministerial permits in accordance with rights laid out in the franchise agreement between the utility and the jurisdiction.
- The DCU installation process has been fairly consistent with each jurisdiction
 - SoCal Gas presents the project to staff.
 - Staff helps SoCal Gas find appropriate locations.
 - SoCal Gas engages any resident potentially impacted by the installation.
 - SoCal Gas follows staff's lead in engaging elected or appointed officials.
- SoCal Gas follows Costal Zone permitting process

Community Outreach Efforts

- Outreach remains a top priority for SoCal Gas.
- The Advanced Meter Outreach project includes:
 - Meetings with staff and elected officials
 - 1x1 meetings with impacted residents at their homes
 - Mail letters to impacted residents near location of data collection units
 - Follow up phone calls to residents near location of DCU that may have not received letter or may have been unavailable during 1x1 visits
 - Door hanger reminder of construction of DCU 48 hours prior to construction

SoCal Gas is Requesting

- County Board of Supervisor's support to allow County Staff to work with SoCal Gas on an exemption to the wireless telecommunications ordinance.
 - The Conditional Use Permit requirement represents potential conflicts with CPUC jurisdiction and the existing Franchise.



ADVANCEDmeter

APPENDIX

Coastal Sites

